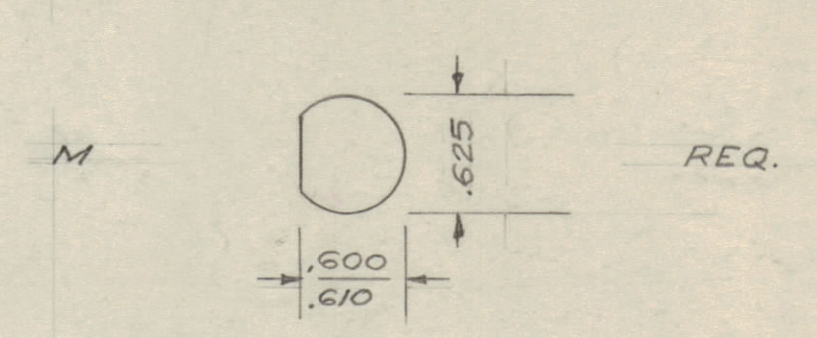
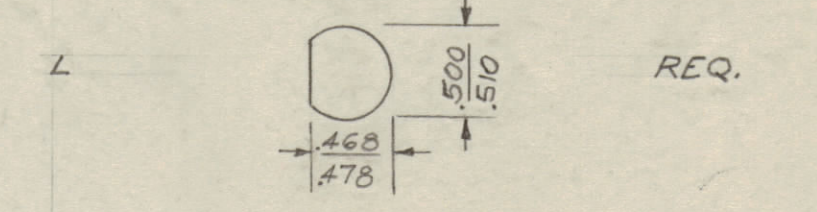
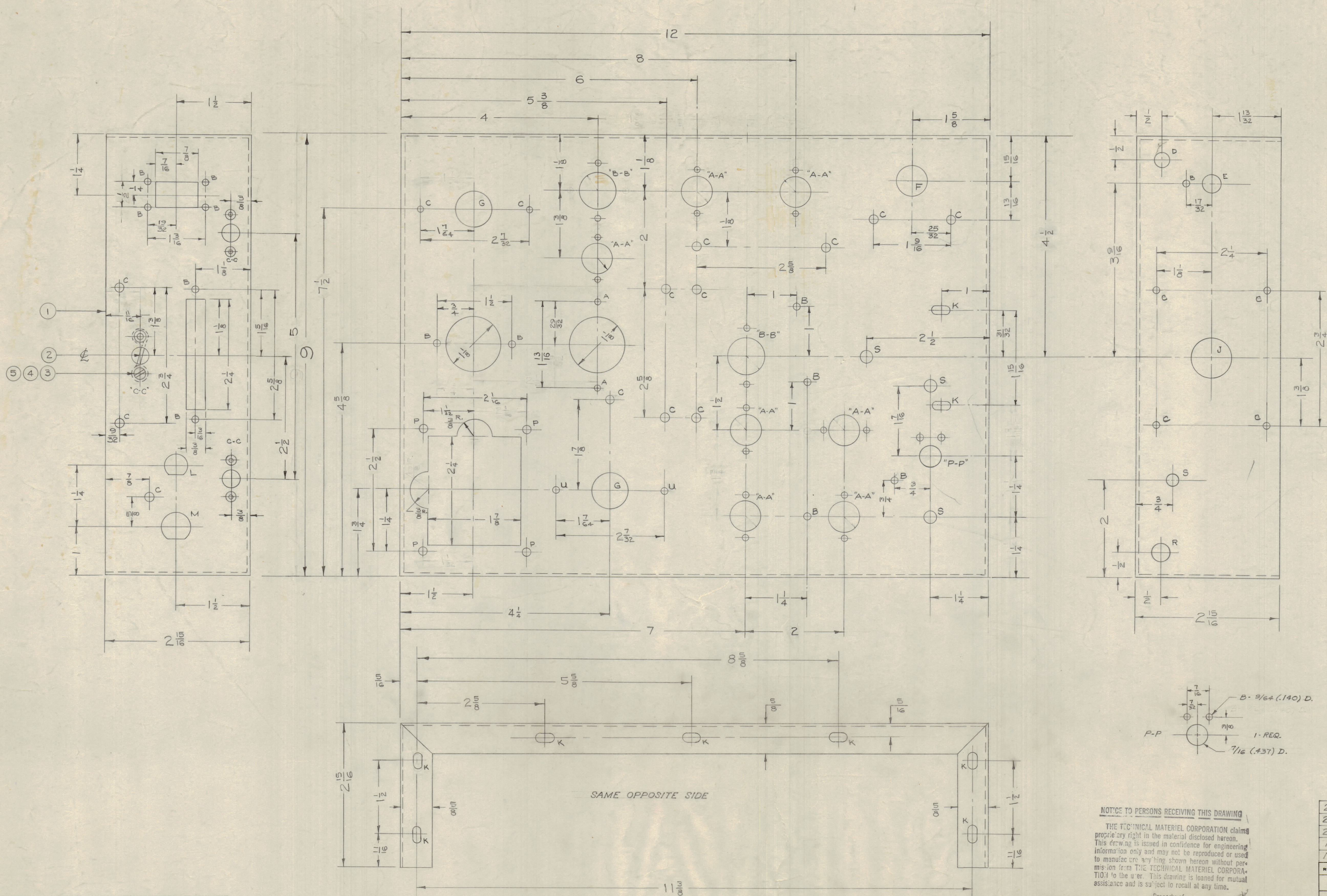
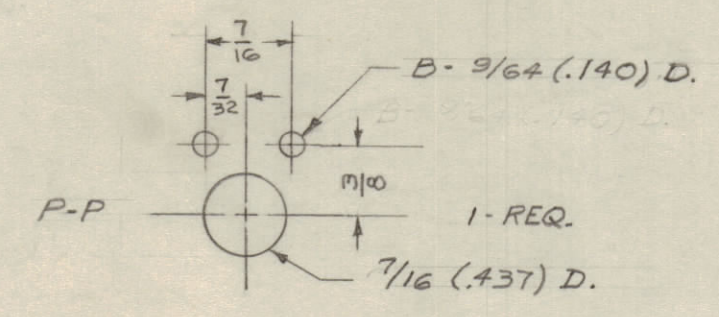
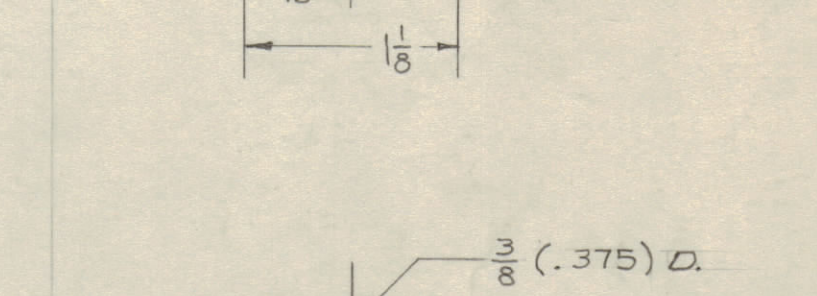
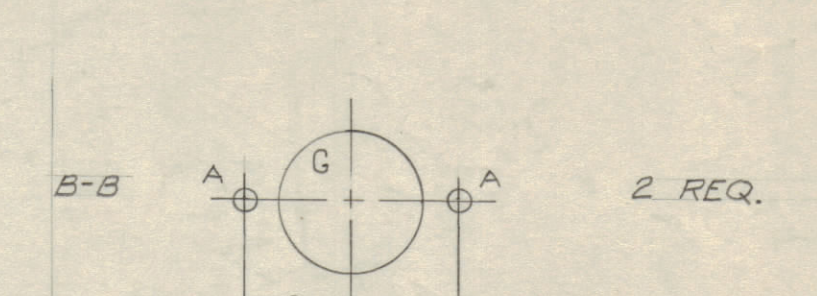
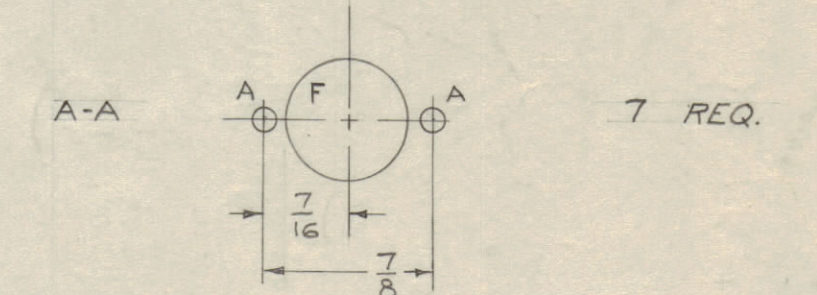


IF IT IS FOUND DESIRABLE TO CHANGE ANY TOLERANCE OR OTHER DETAIL SPECIFIED ON THIS DRAWING NOTIFY THE PURCHASER PROMPTLY.
 MAXIMUM ALLOWABLE TOLERANCES HAVE BEEN DETERMINED AND DEVIATIONS WILL BE CAUSE FOR REJECTION. REMOVE ALL BURRS AND SHARP EDGES.

- A - 1/8 (.125) DIA. 20 HOLES REQ.
- B - 9/64 (.140) DIA. 15 " "
- C - 3/16 (.187) DIA. 18 " "
- D - 5/16 (.312) DIA. 1 " "
- E - 13/32 (.406) DIA. 1 " "
- F - 5/8 (.625) DIA. 8 " "
- G - 3/4 (.750) DIA. 4 " "
- J - 13/16 (.812) DIA. 1 " "
- K - 1/64 X 1/32 SLOTS 16 SLOTS REQ.



- P - 13/64 (.203) 4 HOLES REQ.
- R - 1/2 (.500) 1 " "
- S - 1/4 (.250) 4 " "
- U - 1/64 (.015) 2 " "



SAME OPPOSITE SIDE

NOTICE TO PERSONS RECEIVING THIS DRAWING

THE TECHNICAL MATERIEL CORPORATION claims proprietary right in the material disclosed herein. This drawing is issued in confidence for engineering information only and may not be reproduced or used to manufacture anything shown hereon without permission from THE TECHNICAL MATERIEL CORPORATION. This drawing is loaned for mutual assistance and is subject to recall at any time.

Property of:
 THE TECHNICAL MATERIEL CORPORATION
 MAMARONECK, NEW YORK

REF: LD-349

REQ. ITEM	PART NO.	DESCRIPTION	SYMBOL
2	5 NTH0348BC6	NUT, HEX.	
2	4 LWS03MRC	WASHER, LOCK	
2	3 SCFS0348BC4	SCREW, MACHINE	
1	2 FS-102-1	FASTENER	
1	1 MS-1055	MAIN CHASSIS (NO DWG.)	

.064		THE TECHNICAL MATERIEL CORP.	
STOCK SIZE		MAMARONECK, NEW YORK	
ALUMINUM		MAIN CHASSIS ASSY.	
MATERIAL		GSB-1 MARK II. SERIES	
5052 - H32		S. C. I. T. G.	
TYPE & TEMPER		5-3-57	
DRAWN		ELEC. DES. APP.	
HEAT TREAT. SPEC.		MECH. DES. APP.	
S-404 IRIDIUM		CHECKED	
FINISH & SPEC. NO.		FINAL APPROVAL	
		A-1415	

ISSUE ITEM	CHANGED FROM	DATE	BY	CN. NO.	DRAFTS	CHECKER	ENG. APP.
B	5-404 IRIDIUM WAS	12/1/59	1001	A.B.			EMM
A	5-101 CAUSTIC DIP	7					
	4 " B" HOLES DELETED	15					
	6 " C" HOLES ADDED	57					
	2 " C-C" DETAILS ADDED						

ALL OTHERS	DEC. DIM. ±	DRILL PUNCH, COMMERCIAL STOCK
	FRAC. DIM. ±	SIZES AND MANUFACTURERS
	ANGULAR DIM. ±	TOLERANCES ARE NOT INCLUDED.

1	GSB-1	MARK II	5-3-57
REQ. PER UNIT	MODEL	PROJECT NO.	DATE
		ASSY. NO.	
		USED ON	

A-1415
 B