

TMC PART NO.	MARKER NOS. ITEM 3 *	TOROIDAL (ITEM 1)	CAPACITOR (ITEM 2)	RESONANCE	TOLERANCE	REQ. PER UNIT	USED ON			A-1407
							MODEL	ASS'Y. NO.	DATE	
						1 Each	FX-153	A-1408	3-27-57	
A-1407-1	1	CL-128-1	CM30E302G & CM20E121G	21.1 Kcs.	± 30 cps					
A-1407-2	2	CL-128-2	CM30E432G	21.1 Kcs.	± 30 cps					
A-1407-3	3	CL-128-3	CM30E562G	16.6 Kcs.	± 30 cps					
A-1407-4	4	CL-128-4	CM30E432G	21.1 Kcs.	± 30 cps					
A-1407-5	5	CL-128-5	CM30E472G	19.8 Kcs.	± 30 cps					
A-1407-6	6	CL-128-6	CM30E432G	21.7 Kcs.	± 30 cps					
A-1407-7	7	CL-128-7	CM30E472G	19.8 Kcs.	± 30 cps					
A-1407-8	8	CL-128-8	CM30E302G & CM20E121G	21.1 Kcs.	± 30 cps					

SINGLE CAPACITOR

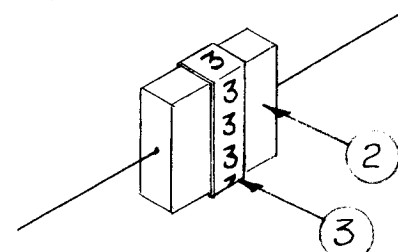


Figure 1

DOUBLE CAPACITOR (A-1407-1 & 8)

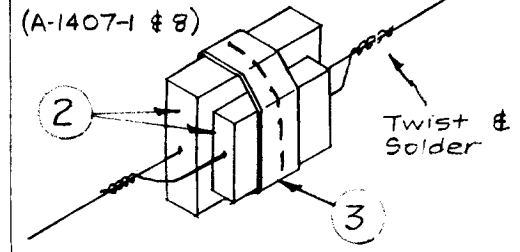


Figure 2

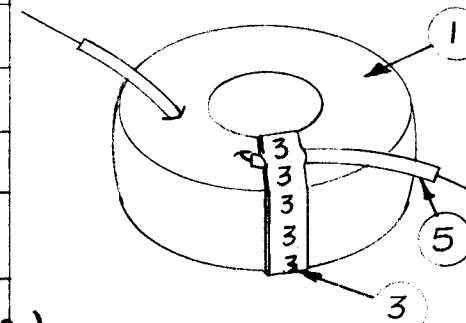


Figure 3

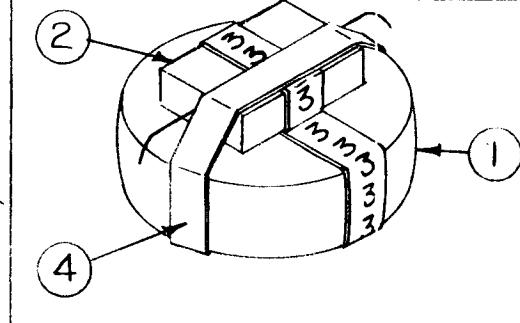


Figure 4

* Mark rs may be any consecutive order (1 to 8, 20 to 28, etc.)

ASSEMBLY PROCEDURE

1. Obtain resonance in accordance with TMC Spec. S-206.
2. Place mark rs (item 3) on coil and capacitor as shown. (See chart). Fig. 1, Fig. 2, and Fig. 3.
3. Tape th toroid and capacitor securely together. Fig. 4

This sub-assembly must not be separated until the final assembly of FX-153. (A-1408)

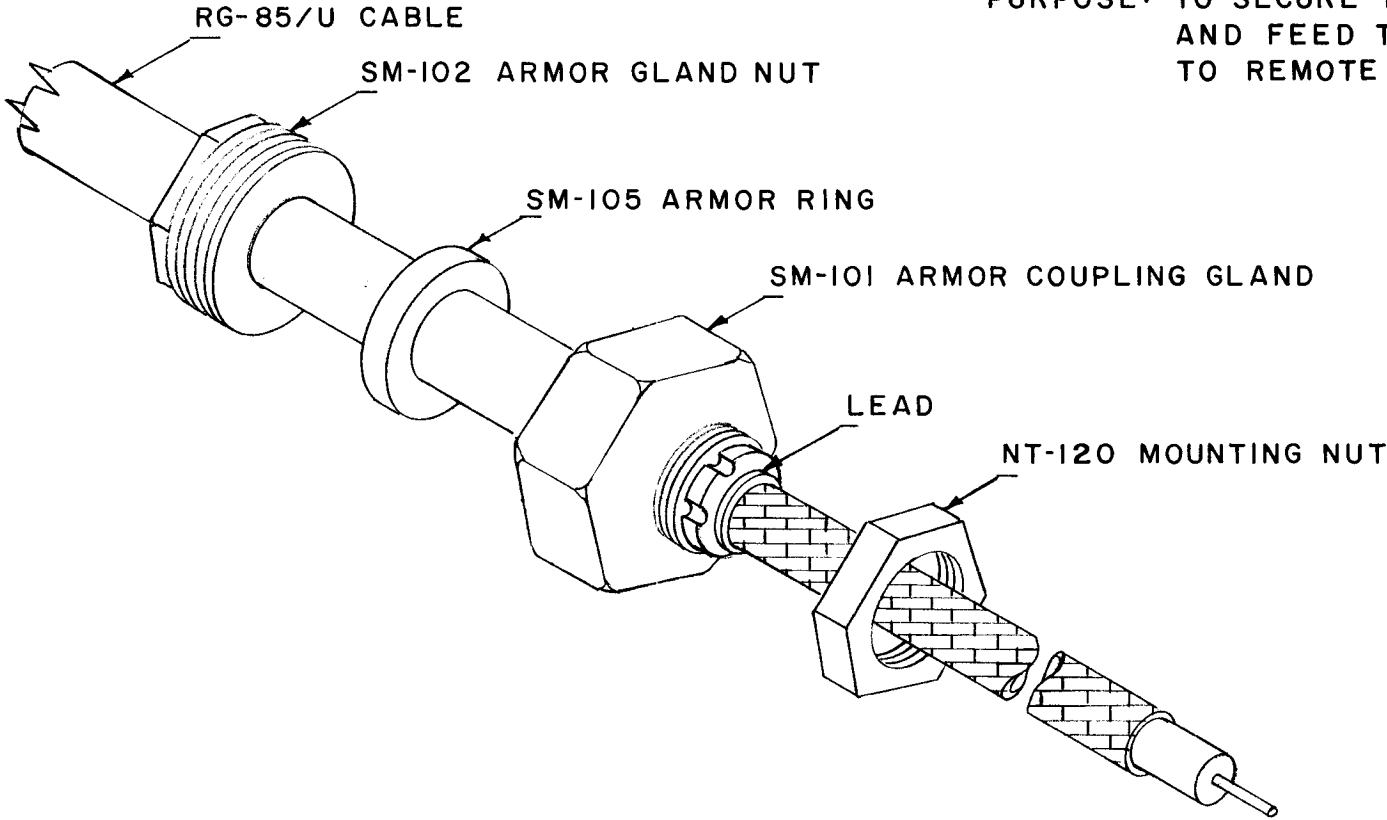
REQ.	ITEM	PART NO.	DESCRIPTION	SYMBOL
1*	5	FX-104-4-.022	Insulation, Sleeving (Green)	# 22
X	4	TA-102-2	Tape, Paper	
X	3	LA-101	Wire, Marker (1 thru 8)	
1	2	See chart	Capacitor	
1	1	See chart	Reactor, Toroidal	

ISSUE	ITEM	CHANGED FROM	DATE	CH. NO.	DRAFTS	CHECKER	ENG. APP.
TOLERANCES		SCALE:					
DEC. DIM. ±		MAXIMUM ALLOWABLE TOLERANCES HAVE BEEN DETERMINED AND ANY DEVIATIONS WILL BE CAUSE FOR REJECTION. REMOVE ALL BURRS AND SHARP EDGES					
FRAC. DIM. ±							
ANGULAR DIM. ±							

STOCK SIZE		MATERIAL		TYPE & TEMPER		HEAT TREAT. SPEC.		FINISH & SPEC. NO.	
THE TECHNICAL MATERIEL CORP. MAMARONECK. NEW YORK				DRAWN		CHECKED		FINAL APPROVAL	
COIL & CAPACITOR ASS'Y. (FX-153)				63-27-57		A.I.J.		A-1407	
				ELEC. DES. APP.		MECH. DES. APP.			

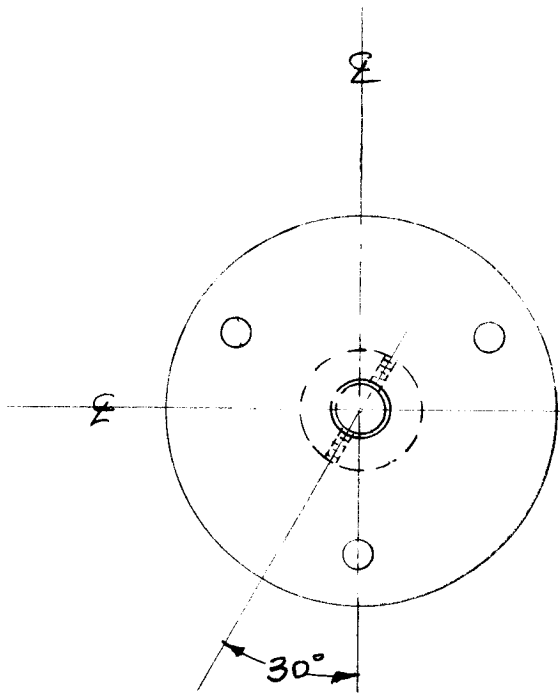
REQ. PER UNIT	USED ON			A-1410
	MODEL	ASSY. NO.	DATE	

PURPOSE: TO SECURE RG-85/U TO BULKHEAD AND FEED THRU UNARMORED CABLE TO REMOTE POINT. *

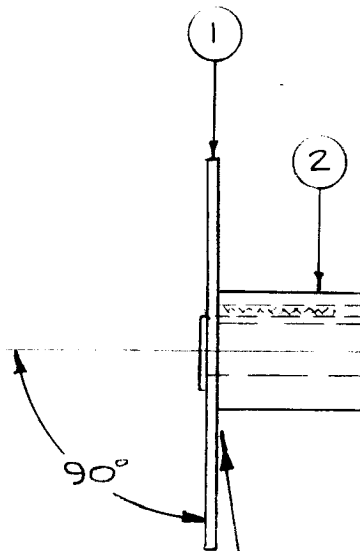


ISSUE	ITEM	CHANGED FROM	DATE	CH. NO.	DRAFTS	CHECKER	ENG. APP.	REQ. ITEM	PART NO.	DESCRIPTION	SYMBOL	
										THE TECHNICAL MATERIEL CORP. MAMARONECK, NEW YORK		
									STOCK SIZE	FEED THRU ASSEMBLY, A-1410		
									MATERIAL			
TOLERANCES			SCALE:							C.D.D		SA
DEC. DIM. ± FRAC. DIM. ± ANGULAR DIM. ±			MAXIMUM ALLOWABLE TOLERANCES HAVE BEEN DETERMINED AND ANY DEVIATIONS WILL BE CAUSE FOR REJECTION. REMOVE ALL BURRS AND SHARP EDGES					TYPE & TEMPER	HEAT TREAT. SPEC.	DRAWN	CHECKED	FINAL APPROVAL
								FINISH & SPEC. NO.	ELEC. DES. APP.	MECH. DES. APP.	A-1410	

REQ. PER UNIT	USED ON			A-1416 A
	MODEL	ASS'Y. NO.	DATE	
1	GSB-1 MARK II	A-1417	5-7-57	



NOTE POSITION OF HUB IN RELATION TO SUPPORT PLATE

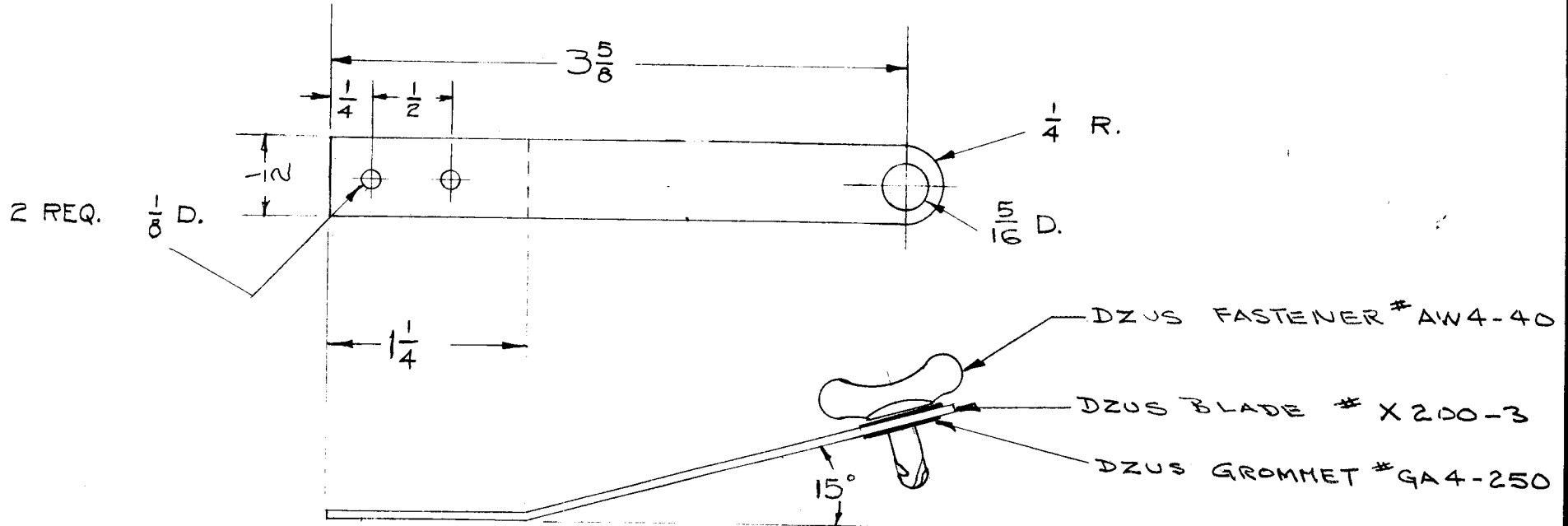


NOTE: PRESS FIT ITEM 1 TO ITEM 2 AND SWEAT SOLDER.

	1	2	PM-442	HUB				
	1	1	MS-586	PLATE, SUPPORT				
	REQ. ITEM		PART NO.	DESCRIPTION	SYMBOL			
				THE TECHNICAL MATERIEL CORP. MAMARONECK, NEW YORK				
				SUPPORT PLATE ASS'Y.				
				GSB-1 - MARK II				
A	2	SOLDER NOTE ADDED		5957	1	SC.	JAD	ML
	1	Item 3 was SC-123-0-4						
ISSUE	ITEM	CHANGED FROM	DATE	CH. NO.	DRAFTS	CHECKER	ENG. APP.	
TOLERANCES			SCALE:					
DEC. DIM. ±			MAXIMUM ALLOWABLE TOLERANCES HAVE BEEN DETERMINED AND ANY DEVIATIONS WILL BE CAUSE FOR REJECTION. REMOVE ALL BURRS AND SHARP EDGES					
FRAC. DIM. ±								
ANGULAR DIM. ±								
		TYPE & TEMPER	HEAT TREAT. SPEC.	DRAWN	CHECKED	FINAL APPR VAL		
		CADIUM PLATE				A-1416 A		
		.0003						
		FINISH & SPEC. NO.	ELEC. DES. APP.	MECH. DES. APP.				

STANDARD DRAWING

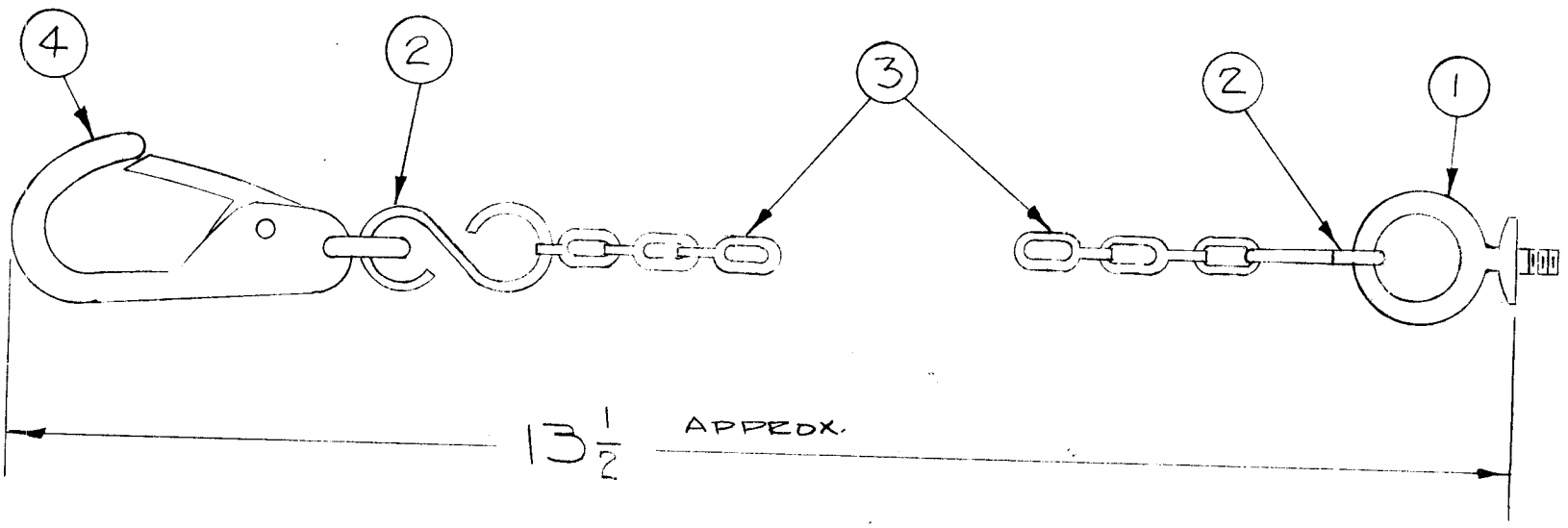
REQ. PER UNIT	USED ON			A-1432	A
	MODEL	ASS'Y. NO.	DATE		
4	TLI - I	A-1484			



REF: DZUS FASTENER CO. INC.

REQ.	ITEM	PART NO.	DESCRIPTION			SYMBOL	
		.045	THE TECHNICAL MATERIEL CORP.				
		STOCK SIZE	MAMARONECK, NEW YORK				
A	1	FINISH DELE	11/14/57	1	16	EJECTOR BLADE ASS'Y.	
ISSUE	ITEM	CHANGED FROM	DATE	CH. NO.	DRAFTS	CHECKER	ENG. APP.
TOLERANCES			SCALE: #				
DEC. DIM. ±			MAXIMUM ALLOWABLE TOLERANCES HAVE BEEN DETERMINED AND ANY DEVIATIONS WILL BE CAUSE FOR REJECTION. REMOVE ALL BURRS AND SHARP EDGES				
FRAC. DIM. ± 1/64							
ANGULAR DIM. ±							
TYPE & TEMPER		HEAT TREAT. SPEC.	DRAWN		CHECKED	FINAL APPROVAL	
NONE			6-24-57		16 4/24/57		
FINISH & SPEC. NO.		ELEC. DES. APP.	MECH. DES. APP.		A-1432	A	

REQ. PER UNIT	USED ON			A-1436	B
	MODEL	ASS'Y. NO.	DATE		
1	TLI	A-1438	6-26-57		



FINISH
 S114 ZINC CHROMATE PRIMER
 S115 SMOOTH GREY ENAMEL
 (DO NOT PAINT THREADS OF ITEM 1)

1	4	PD-140-0-N	EYE SNAP.	
1	3	CJ-101-1-BN-8.00	CHAIN, SAFETY	
2	2	PD-141-1-N	"S" HOOK	
1	1	SC-116-N	EYEBOLT, FLANGED	
REQ. ITEM	PART NO.		DESCRIPTION	SYMBOL

B	1	ITEM 1 WAS SC-116, ITEM 3 WAS CJ101-1-BNG.50	4/2/58	2	16	<i>[Signature]</i>	<i>[Signature]</i>
A	1	ITEM 1 WAS SM-141 ITEM 2,3,4 WAS CAD PLATE	11/14/57	1	16	<i>[Signature]</i>	<i>[Signature]</i>
ISSUE	ITEM	CHANGED FROM	DATE	CH. NO.	DRAFTS	CHECKER	ENG. APP.

TOLERANCES

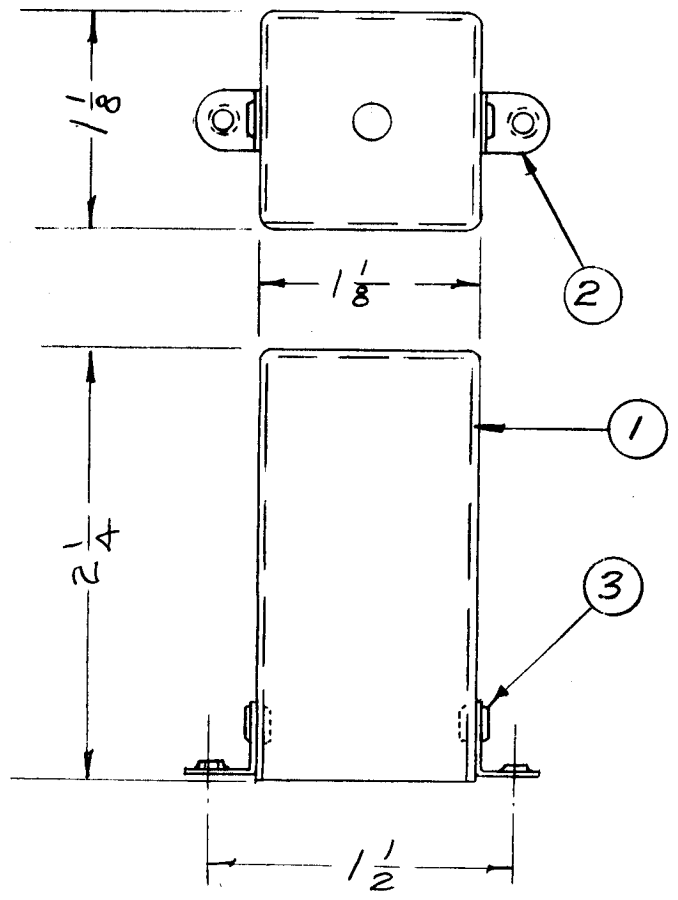
DEC. DIM. ±
 FRAC. DIM. ±
 ANGULAR DIM. ±

SCALE:
 MAXIMUM ALLOWABLE TOLERANCES HAVE BEEN DETERMINED AND ANY DEVIATIONS WILL BE CAUSE FOR REJECTION.
 REMOVE ALL BURRS AND SHARP EDGES

THE TECHNICAL MATERIEL CORP. MAMARONECK, NEW YORK		
CHAIN ASS'Y		
6-26-57	<i>[Signature]</i>	<i>[Signature]</i>
DRAWN	CHECKED	FINAL APPROVAL
SEE NOTE		
FINISH & SPEC. NO.	ELEC. DES. APP.	MECH. DES. APP.
		A-1436 B

A-1440

REQ. PER UNIT	USED ON		
	MODEL	ASS'Y. NO.	DATE
2		A-1444	
1	SBE-1	A-1446	8-1-57
1		A-1447	
2	SBE-2	A-1444	3-12-58
1		A-1511	
1	SBE-3	A-1511	11-30-59
3	SBE-3 AX-205	TT-100	12-2-59
5	GPR-92	TT-147 TT-149 TT-150 TT-151 TT-152	10/29/62



NOTICE TO PERSONS RECEIVING THIS DRAWING

THE TECHNICAL MATERIEL CORPORATION claims proprietary right in the material disclosed hereon. This drawing is issued in confidence for engineering information only and may not be reproduced or used to manufacture anything shown hereon without permission from THE TECHNICAL MATERIEL CORPORATION to the user. This drawing is loaned for mutual assistance and is subject to recall at any time.

Property of:
THE TECHNICAL MATERIEL CORPORATION
MAMARONECK, NEW YORK

REV	DATE	BY	CHKD

REQ. ITEM	PART NO.	DESCRIPTION	SYMBOL
2	3	EY-100-1	Eyelet
2	2	TE-167	Lug, Angle, Threaded
1	1	FP-159	Can
STOCK SIZE		THE TECHNICAL MATERIEL CORP. MAMARONECK, NEW YORK	
MATERIAL		CAN ASS'Y.	
TYPE & TEMPER		HEAT TREAT. SPEC.	FINISH & SPEC. NO.
DRAWN		CHECKED	FINAL APPROVAL
ELEC. DES. APP.		MECH. DES. APP.	A-1440

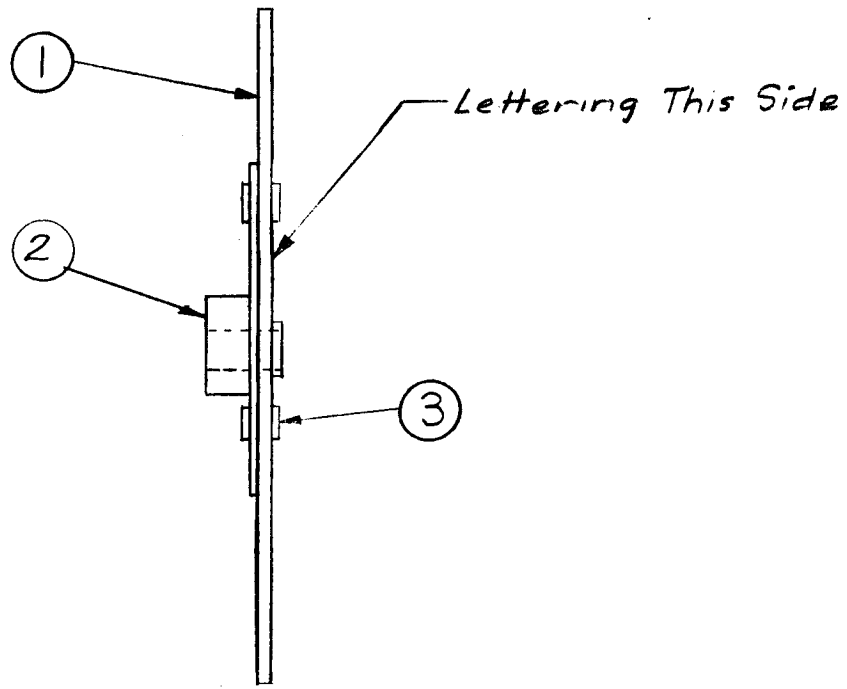
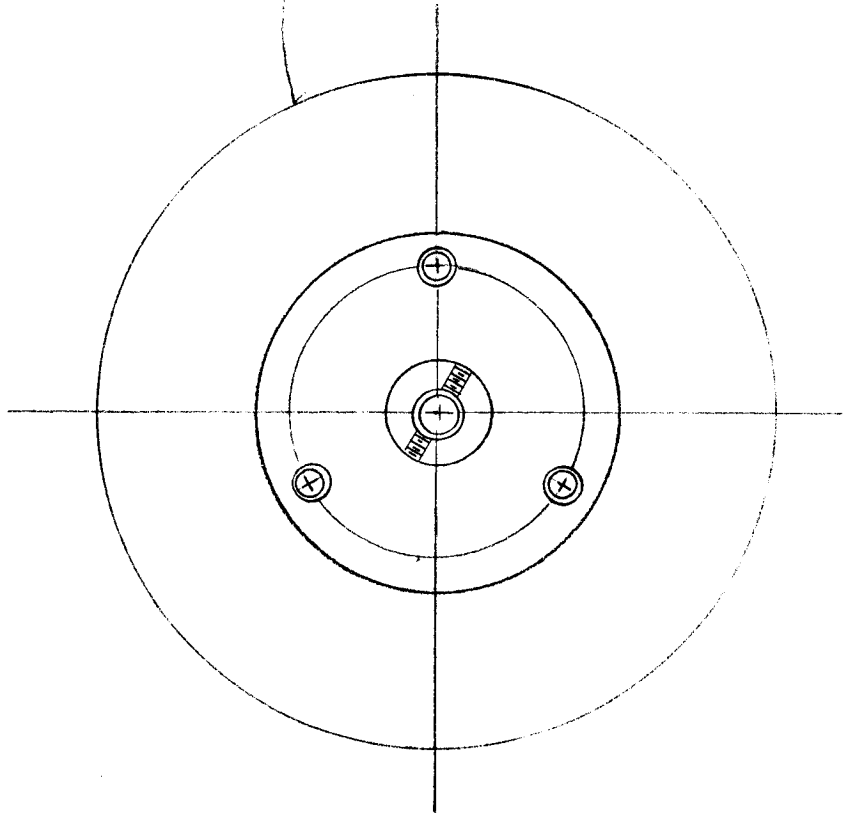
CHANGED FROM	DATE	CH. NO.	DRAFTS	CHECKER	ENG. APP.
TOLERANCES					
SCALE:					
MAXIMUM ALLOWABLE TOLERANCES HAVE BEEN DETERMINED AND ANY DEVIATIONS WILL BE CAUSE FOR REJECTION.					
REMOVE ALL BURRS AND SHARP EDGES					

1/64
M. ±

16 7-18-57

REQ. PER UNIT	USED ON		
	MODEL	ASSY. NO.	DATE
1	SBE-1		7-18-57
1	SBE-2		5-5-58

A-1441 A

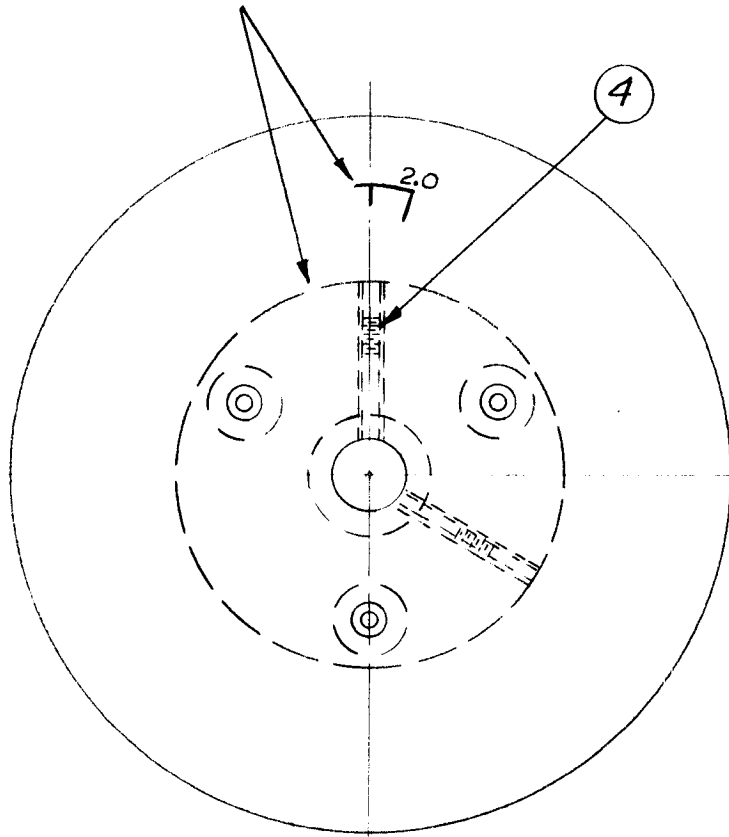


3	3	EY-100-1	Eyelet
1	2	A-1023	Support Plate Assembly
1	1	LD-350	Lettering, HF Dial

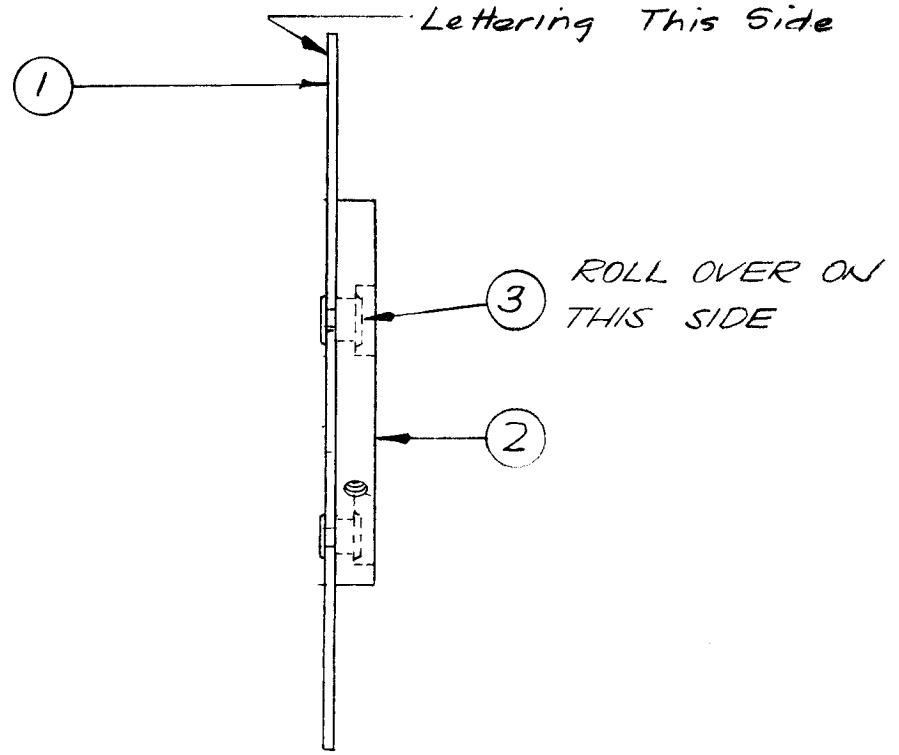
ISSUE	ITEM	CHANGED FROM	DATE	CH. NO.	DRAFTS	CHECKER	ENG. APP.
A	2	Item 3 Was 2 Req.	1-10-62	6168	LL	<i>[Signature]</i>	<i>[Signature]</i>
	1	Item 2 Was MC-105-2					

REQ. ITEM	PART NO.	DESCRIPTION	SYMBOL
THE TECHNICAL MATERIEL CORP. MAMARONECK, NEW YORK HF DIAL ASS'Y. SBE-1			
STOCK SIZE			
MATERIAL			
TYPE & TEMPER		HEAT TREAT. SPEC.	
FINISH & SPEC. NO.		ELEC. DES. APP.	MECH. DES. APP.

Note position of Hub with respect to the Dial Calibration marker.



REQ. PER UNIT	USED ON			A-1442	A
	MODEL	ASS'Y. NO.	DATE		
1	SBE-1		7-19-57		
1	SBE-2		5-5-58		
1	SBE-3	AP-100	11-30-59		



2	4	AN565D6-H6	Set Screw, Allen Hd.	
3	3	EY-100-2	Eyelet	
1	2	PM-455	HUB, MF Dial	
1	1	LD-351	Lettering, MF Dial	

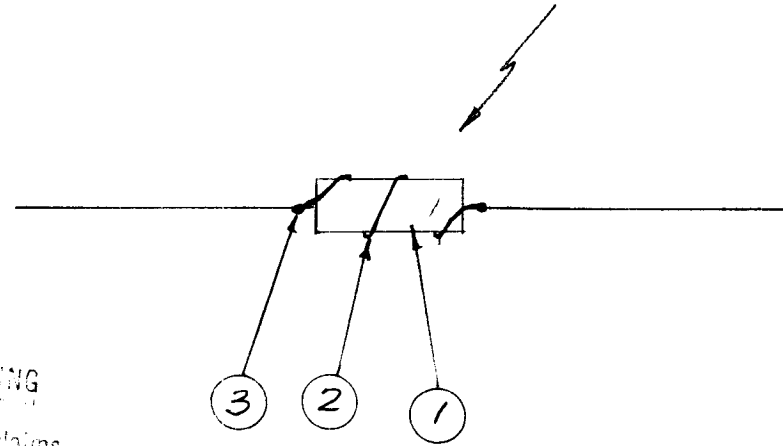
REQ. ITEM	PART NO.	DESCRIPTION	SYMBOL
THE TECHNICAL MATERIEL CORP. MAMARONECK, NEW YORK MF DIAL ASS'Y. SBE-1			
MATERIAL		DATE	CHECKED
TYPE & TEMPER		HEAT TREAT. SPEC.	DRAWN
FINISH & SPEC. NO.		ELEC. DES. APP.	MECH. DES. APP.
		16 7-19-57	RWB
			ARB
			A-1442 A

ISSUE	ITEM	CHANGED FROM	DATE	CH. NO.	DRAFTS	CHECKER	ENG. APP.
	A	IT. 2 CHG TO OPPOSITE SD.	6/16/71	20407	GE	W	P.E.H.
TOLERANCES		SCALE:					
DEC. DIM. ±	FRAC. DIM. ±	MAXIMUM ALLOWABLE TOLERANCES HAVE BEEN DETERMINED AND ANY DEVIATIONS WILL BE CAUSE FOR REJECTION.					
ANGULAR DIM. ±		REMOVE ALL BURRS AND SHARP EDGES					

REQ. PER UNIT	USED ON		
	MODEL	ASSY NO.	DATE
1	SBE-1	PS101	8-15-57
1	RFA-1	PS202	5-27-58
1	SBE-3	AX-204	11-30-59

A-1453 A

Wind two turns as shown, 1/4" apart.



NOTICE TO PERSONS RECEIVING THIS DRAWING

THE TECHNICAL MATERIEL CORPORATION claims proprietary right in the material depicted herein. This drawing is issued in confidence and is for information only and may not be reproduced or used to manufacture any thing shown hereon without permission from THE TECHNICAL MATERIEL CORPORATION to the user. This drawing is loaned for mutual assistance and is subject to recall at any time.

Property of:

THE TECHNICAL MATERIEL CORPORATION
MAMARONECK, NEW YORK

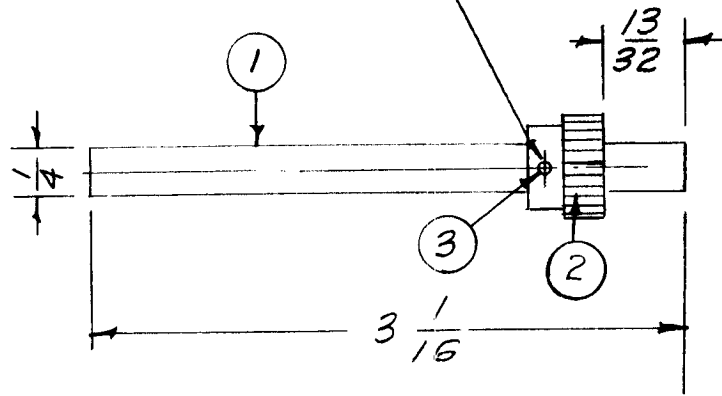
X	3	BS-100	Solder, Soft	
X	2	WL-100-5	Wire, Buss #18	
1	1	RC42GF120J	Resistor, Fixed	

REQ. ITEM	PART NO.	DESCRIPTION	SYMBOL
THE TECHNICAL MATERIEL CORP. MAMARONECK, NEW YORK			
STOCK SIZE			
AX-164 Assy			
SUPPRESSOR, PARASITIC			
MATERIAL		68-15-57	RWP
TYPE & TEMPER		HEAT TREAT. SPEC.	DRAWN
FINISH & SPEC. NO.		ELEC. DES. APP.	MECH. DES. APP.

A	IT WAS RC42GF120K	9.27.66	16902	Wto	JOB		
ISSUE	ITEM	CHANGED FROM	DATE	CH. NO.	DRAFTS	CHECKER	ENG. APP.
TOLERANCES			SCALE:				
DEC. DIM. ±			MAXIMUM ALLOWABLE TOLERANCES HAVE BEEN DETERMINED AND ANY DEVIATIONS WILL BE CAUSE FOR REJECTION.				
FRAC. DIM. ±			REMOVE ALL BURRS AND SHARP EDGES				
ANGULAR DIM. ±							

REQ. PER UNIT	USED ON			A-1456	B
	MODEL	ASS'Y. NO.	DATE		
1	SBE-1		7-19-51		

Drill thru - No. 52 Dr. (.063)
(Use Gear Pilot Hole)



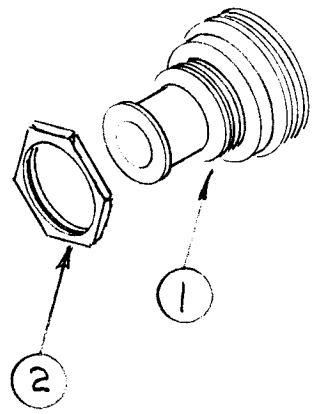
1	3	PN-109-2	Pin, Roll	
1	2	GR-134	Gear, Spur, 1 1/24 P.D.	
1	1	PM-69/RF3.06-B	Shaft, 1/4 D.	

ISSUE	ITEM	CHANGED FROM	DATE	CH. NO.	DRAFTS	CHECKER	ENG. APP.	REQ. ITEM	PART NO.	DESCRIPTION	SYMBOL		
B	1	ITEM ① WAS PM-459-3.062-B	7-18-61	5273	6 DL	M.A.F.	[Signature]	1	3	PN-109-2	Pin, Roll		
A	1	Compl. Rev.	12/2/57	1	16	[Signature]	[Signature]	1	2	GR-134	Gear, Spur, 1 1/24 P.D.		
								1	1	PM-69/RF3.06-B	Shaft, 1/4 D.		
								1/4 D. ROD		THE TECHNICAL MATERIEL CORP. MAMARONECK, NEW YORK			
								STOCK SIZE		MF DIAL SHAFT ASS'Y.			
								BRASS		SBE-1			
								MATERIAL					
								FREE TURNING	[Symbol]	16	7-19-57	ROIP	[Signature]
								TYPE & TEMPER	HEAT TREAT. SPEC.	DRAWN	CHECKED	FINAL APPROVAL	
										[Signature]		A-1456	B
								FINISH & SPEC. NO.		ELEC. DES. APP.	MECH. DES. APP.		

DEC. DIM. ±
FRAC. DIM. ± 1/64
ANGULAR DIM. ±

MAXIMUM ALLOWABLE TOLERANCES HAVE BEEN DETERMINED AND ANY DEVIATIONS WILL BE CAUSE FOR REJECTION.
REMOVE ALL BURRS AND SHARP EDGES

REQ. PER UNIT	USED ON			A-1457
	MODEL	ASS'Y. NO.	DATE	



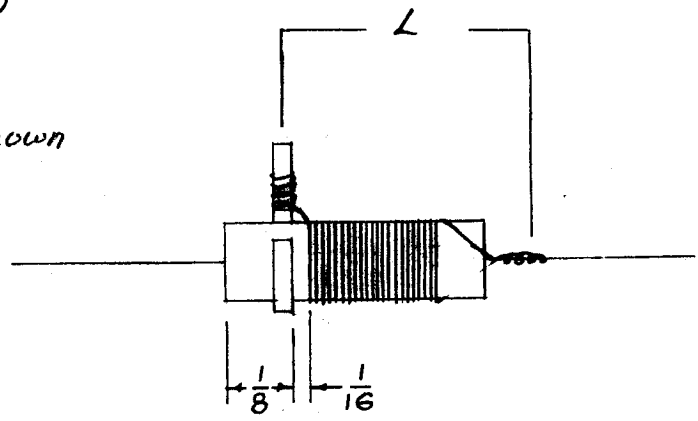
1	2	NT-103	NUT, MOUNTING	
1	1	SM-144	ADAPTER BODY	
REQ. ITEM	PART NO.		DESCRIPTION	SYMBOL
STOCK SIZE			THE TECHNICAL MATERIEL CORP. MAMARONECK. NEW YORK	
MATERIAL			ADAPTER BODY SUB-ASSY	
TOLERANCES		SCALE:	DRAWN <i>FAW 8/30/57</i> CHECKED <i>116</i> FINAL APPROVAL <i>A.J.J.</i>	
DEC. DIM. ±		MAXIMUM ALLOWABLE TOLERANCES HAVE BEEN DETERMINED AND ANY DEVIATIONS WILL BE CAUSE FOR REJECTION. REMOVE ALL BURRS AND SHARP EDGES	FINISH & SPEC. NO.	
FRAC. DIM. ±			ELEC. DES. APP. MECH. DES. APP.	
ANGULAR DIM. ±			A-1457	

A-1466B

REQ. PER UNIT	USED ON		
	MODEL	ASS'Y. NO.	DATE
1	SBE-1		9-19-57
1	SBE-2		5-5-58
1	SBE-3	AS-102	12-2-59

PROCEDURE

1. Stake item 2 (terminal) to item 1 (Resistor) with item 4 (cement).
2. Close wind 22 turns of item 3 (wire)
3. Stake leads to resistor with item 4.
4. Solder lead to ring terminal and resistor as shown
5. Coat with item 5 (U-85).
6. Bake 1 hr. at 150°C.
7. Test coil with Boonton Q Meter 160A or Equiv.



ELECTRICAL DATA of COIL

L - 2 μ hy (1.9 to 2.1)
 Q - Greater than 50
 F - 7.9 mc.

X	6	BS-100	Solder, Soft	
X	5	GL-104-2	Cement, Duco	
X	4	GL-103	Cement, U85	
X	3	WI-107-15	Wire, Magnet #34 DSC	
1	2	TE-153-1	Terminal, Ring Type	
1	1	RC30GF272K	Resistor, Fixed, Comp.	R230

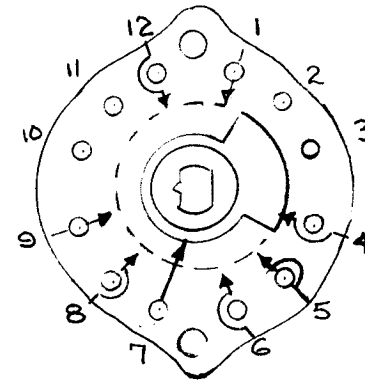
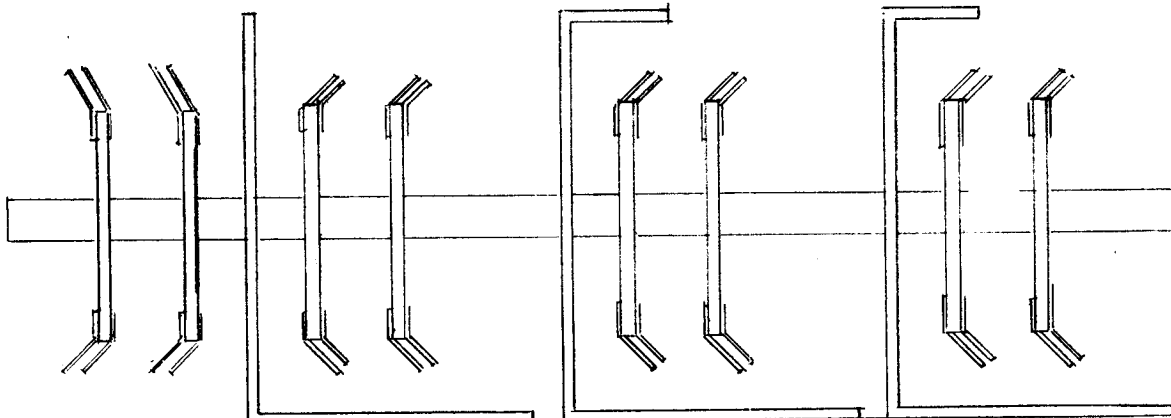
REQ.	ITEM	PART NO.	DESCRIPTION	SYMBOL
THE TECHNICAL MATERIEL CORP. MAMARONECK. NEW YORK				
STOCK SIZE				
CL-187 ASS'Y. (R230 & L125)				
MATERIAL				
(PLATE LOAD & PEAKING COIL ASS'Y)				
ISSUE	ITEM	CHANGED FROM	DATE	CH. NO. DRAFTS CHECKER ENG. APP.
B		Q" WAS 65; NOTE B DEL NOTE 4 TO INCL. RES."	7.13.66	16543 LHO [Signature]
A	2	STEP #8 ADDED	7-16-63	9575 [Signature]
	1	STEP #4 CLARIFIED		
TOLERANCES		SCALE:		
DEC. DIM. \pm		MAXIMUM ALLOWABLE TOLERANCES HAVE BEEN DETERMINED AND ANY DEVIATIONS WILL BE CAUSE FOR REJECTION. REMOVE ALL BURRS AND SHARP EDGES		
FRAC. DIM. \pm				
ANGULAR DIM. \pm				
TYPE & TEMPER		HEAT TREAT. SPEC.		DRAWN RWB
FINISH & SPEC. N.		ELEC. DES. APP.		CHECKED [Signature]
		MECH. DES. APP.		FINAL APPROVAL [Signature]
				A-1466B

REQ. PER UNIT	USED ON			A-1470
	MODEL	ASS'Y. NO.	DATE	
	GPR-70		10-11-57	

ANTENNA STAGE

R.F. STAGE

OSCILLATOR STAGE



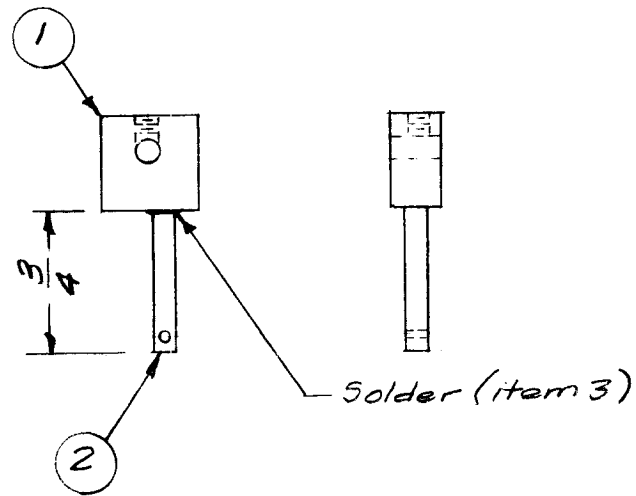
Sl-AA	Sl-A	Sl-B	Sl-C	Sl-D	Sl-E	Sl-F	Sl-G
WS-100-7	WS-100-1	WS-100-6	WS-100-3	WS-100-2	WS-100-3	WS-100-4	WS-100-5

NOTE: Switch Sl wafers must be mounted in individual stages as shown.

ISSUE	ITEM	CHANGED FROM	DATE	CH. NO:	DRAFTS	CHECKER	ENG. APP.	REQ. ITEM	PART NO.	DESCRIPTION	SYMBOL
										THE TECHNICAL MATERIEL CORP. MAMARONECK, NEW YORK BANDCHANGE SWITCH ASSEMBLY	
									STOCK SIZE		
									MATERIAL		
										YHQ 10/11/57 P.L.X. DRAWN CHECKED	A.J.J. FINAL APPROVAL
											A-1470
										ELEC. DES. APP.	MECH. DES. APP.

REQ. PER UNIT	USED ON		
	MODEL	ASS'Y. NO.	DATE
1	GPR-90-RX		10-29-57

A-1480

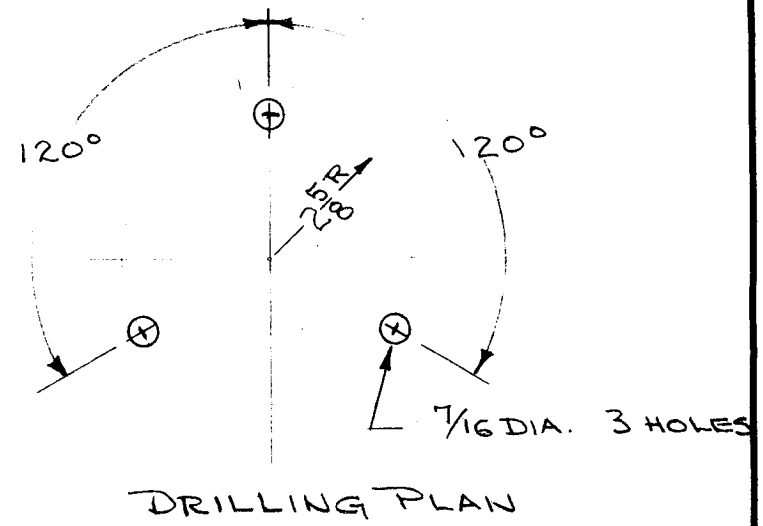
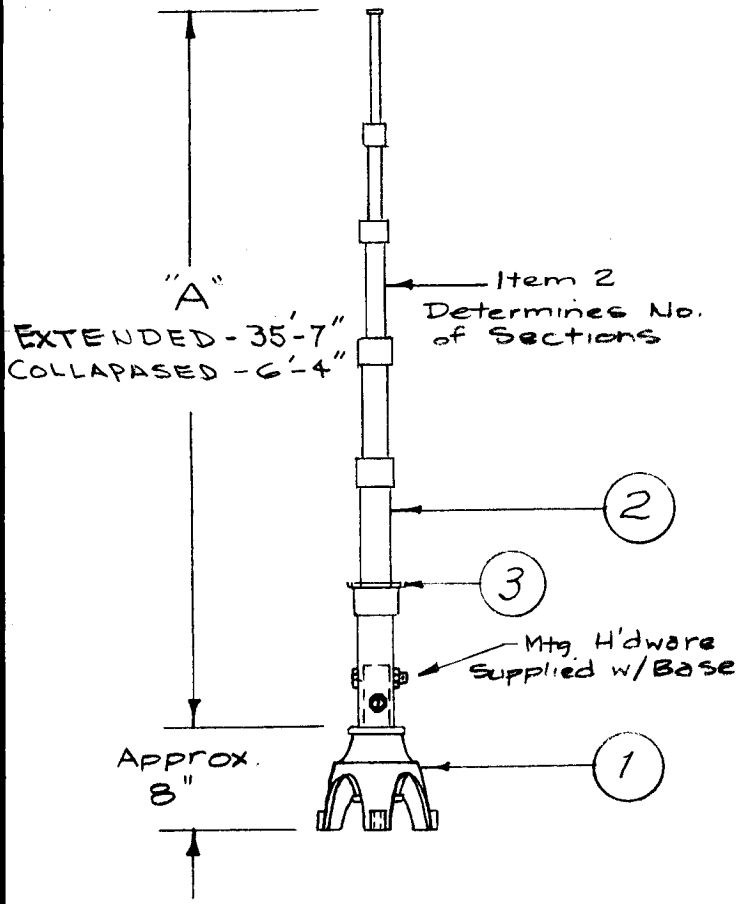


X	3	BS-101	Solder, Silver	
1	2	PN-112	Pin, Striker	
1	1	PM-463	Linkage Arm	
REQ. ITEM	PART NO.		DESCRIPTION	SYMBOL
STOCK SIZE			THE TECHNICAL MATERIEL CORP. MAMARONECK, NEW YORK SWITCH LINKAGE ARM ASS'Y, GPR-90-RX	
MATERIAL				
TYPE & TEMPER				
HEAT TREAT. SPEC.			DRAWN	CHECKED
FINISH & SPEC. NO.			ELEC. DES. APP.	MECH. DES. APP.

ISSUE	ITEM	CHANGED FROM	DATE	CH. NO.	DRAFTS	CHECKER	ENG. APP.
TOLERANCES			SCALE:				
DEC. DIM. ±			MAXIMUM ALLOWABLE TOLERANCES HAVE BEEN DETERMINED AND ANY DEVIATIONS WILL BE CAUSE FOR REJECTION. REMOVE ALL BURRS AND SHARP EDGES				
FRAC. DIM. ±							
ANGULAR DIM. ±							

16 10/29/57
 Hise
 [Signature]
 A-1480

REQ. PER UNIT	USED IN		DATE	A-1486	A
	MODEL	ASSY. NO.			
	A-1486-				



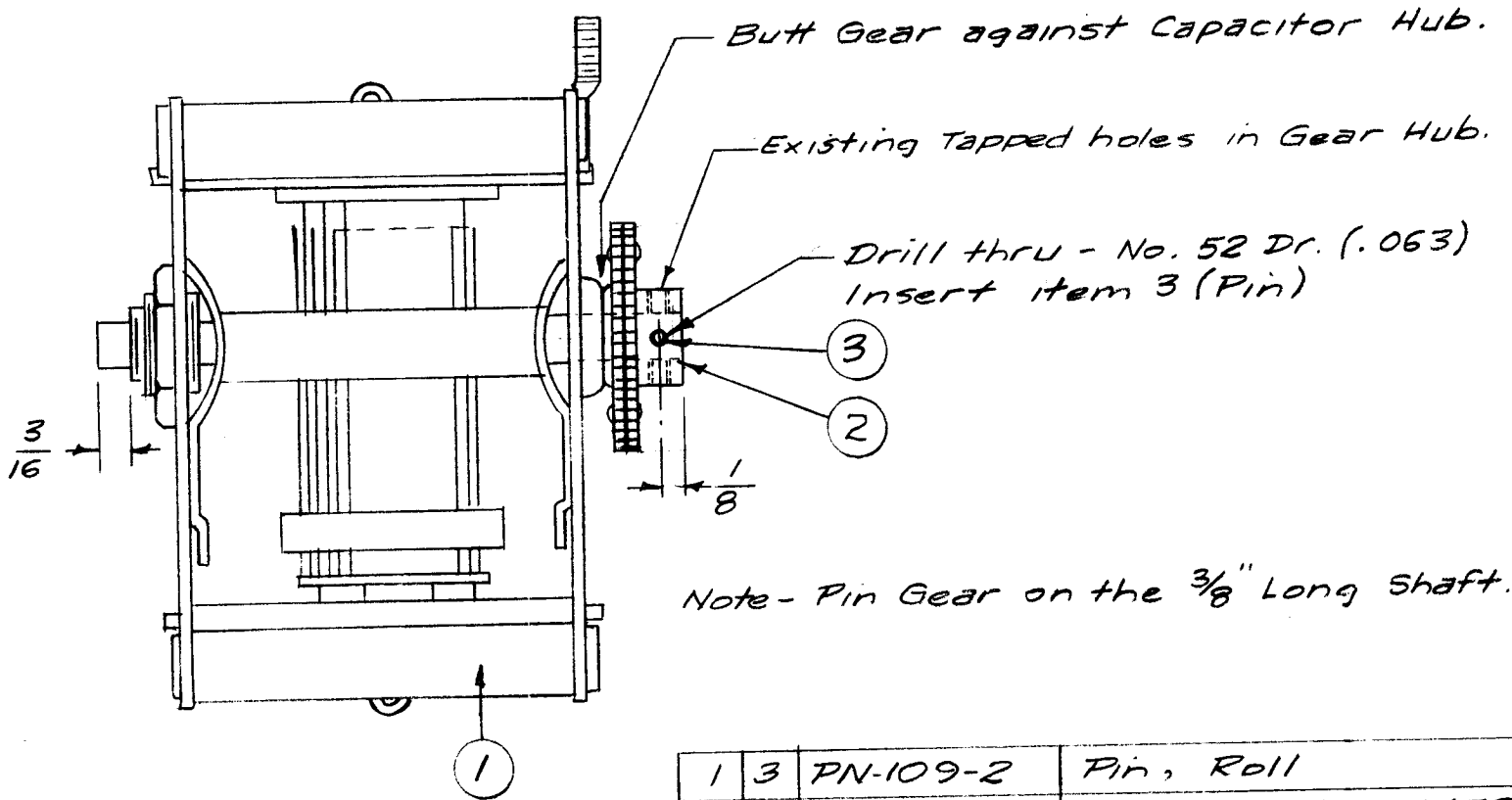
1	3	MS-1271	GUY RING, ANTENNA	
1	2	AW-101-4	Antenna, Whip (6 Sections)	35'7"
1	1	AB-100-9B	Base, Antenna	

ISSUE	ITEM	CHANGED FROM	DATE	CH. NO.	DRAFTS	CHECKER	ENG. APP.
A	1	ADDED ITEM 3	5/27/58	1		<i>[Signature]</i>	<i>[Signature]</i>
TOLERANCES			SCALE:				
DEC. DIM. ±			MAXIMUM ALLOWABLE TOLERANCES HAVE BEEN DETERMINED AND ANY DEVIATIONS WILL BE CAUSE FOR REJECTION.				
FRAC. DIM. ±			REM VE ALL BURRS AND SHARP EDGES.				
ANGULAR DIM. ±							

REQ. ITEM	PART NO.	DESCRIPTION	"A"
STOCK SIZE		THE TECHNICAL MATERIEL CORP. MAMARONECK, NEW YORK	
MATERIAL		VERTICAL WHIP ANTENNA	
TYPE & TEMPER	HEAT TREAT. SPEC.	DRAWN	CHECKED
FINISH & SPEC. NO.		ELEC. DES. APP.	MECH. DES. APP.
		<i>[Signature]</i>	<i>[Signature]</i>
		A-1486 A	

REQ. PER UNIT	USED ON		
	MODEL	ASS'Y. NO.	DATE
1	SBE-1		11-27-57
1	SBE-2		5-5-58

A-1488



1	3	PN-109-2	Pin, Roll	
1	2	GR-127	Gear, Split, 1.1458 P.D.	
1	1	CB-137-3	Capacitor, Var.	C181C

ISSUE	ITEM	CHANGED FROM	DATE	CH. NO.	DRAFTS	CHECKER	ENG. APP.
TOLERANCES			SCALE:				
DEC. DIM. ±			MAXIMUM ALLOWABLE TOLERANCES HAVE BEEN DETERMINED AND ANY DEVIATIONS WILL BE CAUSE FOR REJECTION. REMOVE ALL BURRS AND SHARP EDGES				
FRAC. DIM. ±							
ANGULAR DIM. ±							

REQ. ITEM	PART NO.	DESCRIPTION	SYMBOL
STOCK SIZE		THE TECHNICAL MATERIEL CORP. MAMARONECK, NEW YORK	
MATERIAL		CAPACITOR & GEAR ASS'Y. SBE	
TYPE & TEMPER		HEAT TREAT. SPEC.	DRAWN
FINISH & SPEC. NO.		ELEC. DES. APP.	MECH. DES. APP.

16 11/27/57 JADE

Final Approval: [Signature] [Signature]

A-1488