

IF IT IS FOUND DESIRABLE TO CHANGE ANY TOLERANCE OR OTHER DETAIL SPECIFIED ON THIS DRAWING NOTIFY THE PURCHASER PROMPTLY.

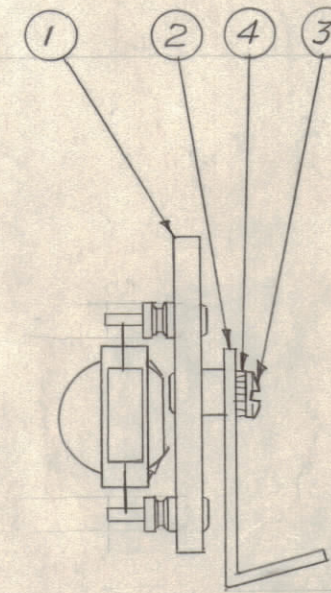
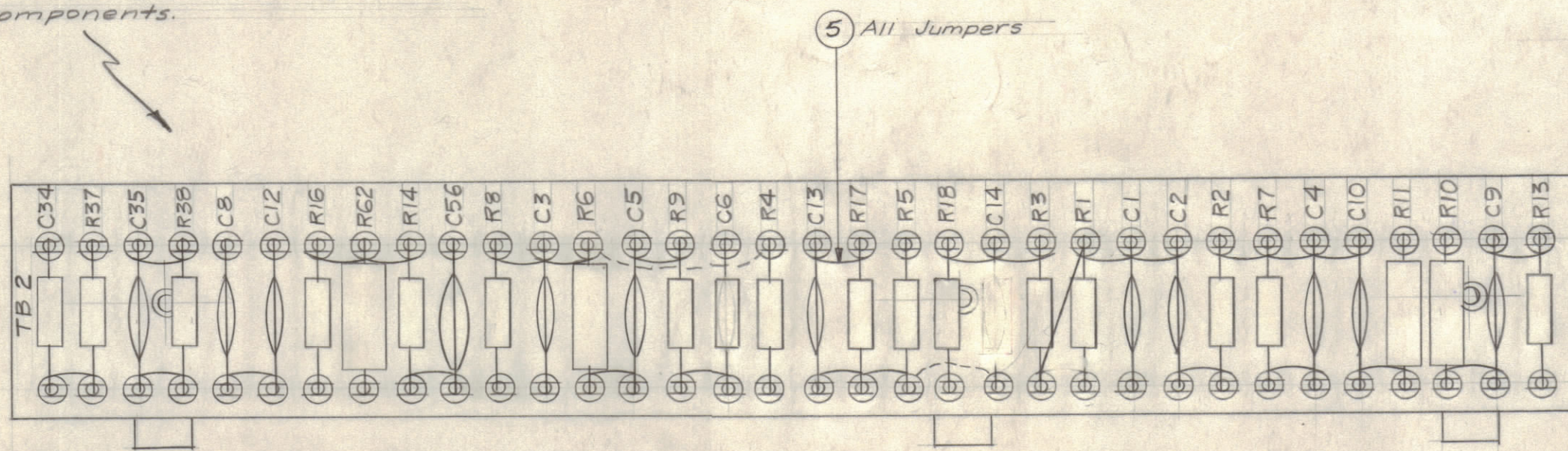
MAXIMUM ALLOWABLE TOLERANCES HAVE BEEN DETERMINED AND DEVIATIONS WILL BE CAUSE FOR REJECTION. REMOVE ALL BURRS AND SHARP EDGES

**NOTICE TO PERSONS RECEIVING THIS DRAWING**

THE TECHNICAL MATERIEL CORPORATION claims proprietary right in the material disclosed hereon. This drawing is issued in confidence for engineering information only and may not be reproduced or used to manufacture anything shown hereon without permission from THE TECHNICAL MATERIEL CORPORATION to the user. This drawing is loaned for mutual assistance and is subject to recall at any time.

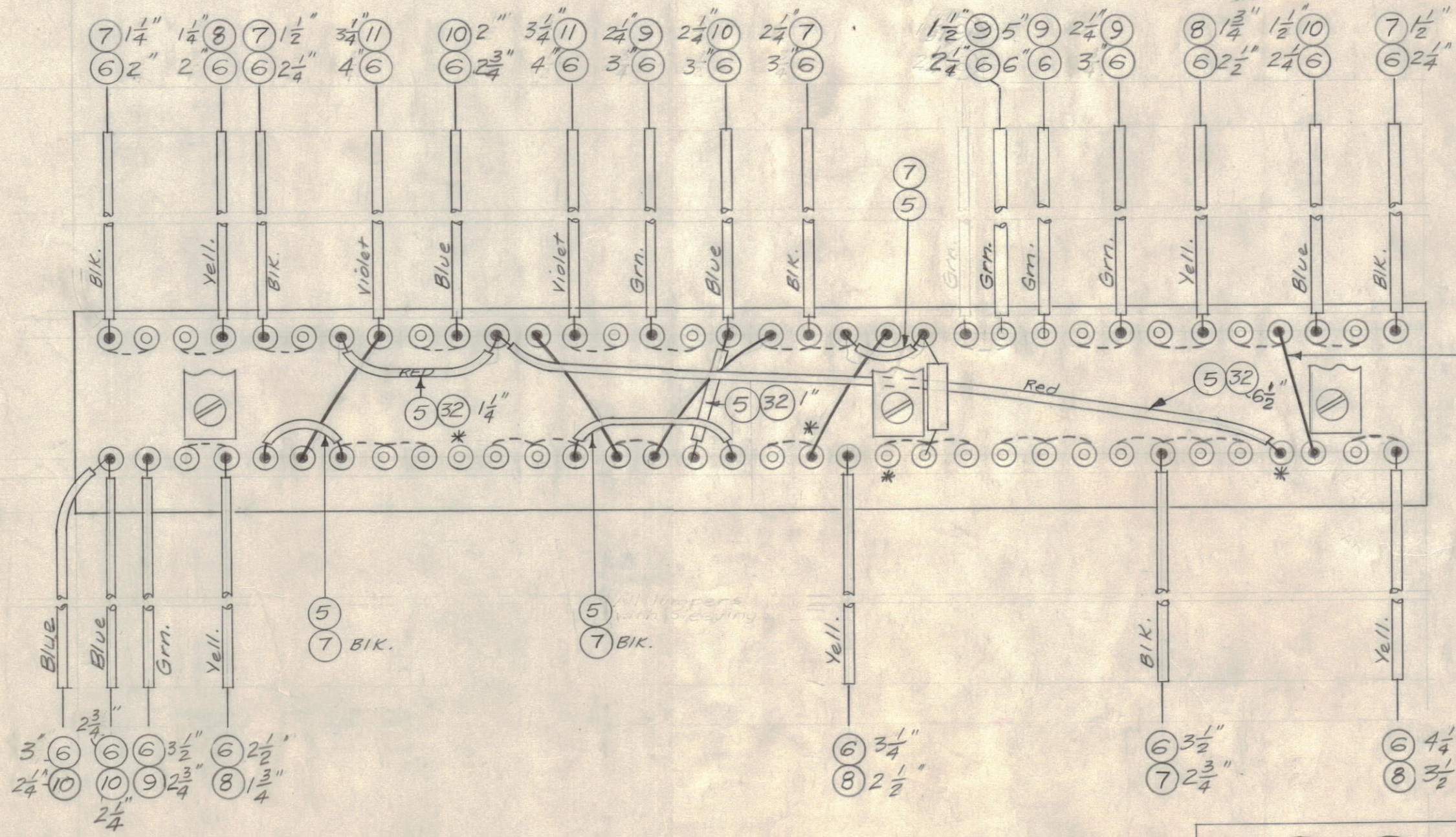
Property of:  
THE TECHNICAL MATERIEL CORPORATION  
MAMARONECK, NEW YORK

Stamping to be 1/8" high black Gothic - Stamp before ass'y. of components.



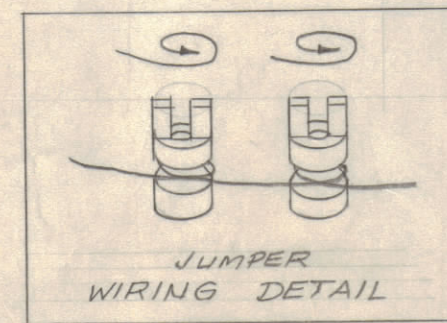
1	33	CC-101-4	Capacitor, Fixed, Ceramic	C6
8 3/4"	32	PX-104-3-.034	Insulation, Sleeve (Size 20)	Red
X	31	BS-100	Solder, Soft	
1	30	RC42GF223K	Resistor, Fixed, Comp.	R62
1	29	RC20GF121K		R38
1	28	RC20GF223K		R37
1	27	RC20GF106K		R18
1	26	RC20GF155K		R17
1	25	RC20GF103K		R14
1	24	RC20GF154K		R13
2	23	RC30GF223K		R11, R10
2	22	RC20GF222K		R16, R8
1	21	RC20GF681K		R7

A-1390 D



5 All Jumpers  
C1, 2, 3, 4, 5, 8, 9, 10, 12, 35, 5656

1	20	RC30GF683K			R6
1	19	RC20GF221K			R5
1	18	RC20GF472K			R4
3	17	RC20GF474K			R9, R3, R2
1	16	RC20GF220K	Resistor, Fixed, Comp.		R1
1	15	CC21SL300J	Capacitor, Fixed, Ceramic	C34	
1	14	CN-108CQ1003J	Capacitor, Fixed, Mylar	C14	
1	13	CC-100-9	Capacitor, Fixed, Ceramic	C13	
11	12	CC-100-16	Capacitor, Fixed, Ceramic		
6 1/4"	11	PX-104-9-.034	Insulation, Sleeve (Size 20)	Violet	
9 1/2"	10	PX-104-6-.034		Blue	
13 3/4"	9	PX-104-4-.034		Green	
10 3/4"	8	PX-104-2-.034		Yellow	
9"	7	PX-104-1-.034	Insulation, Sleeve (Size 20)	Black	
6 1/4"	6	WL-100-7	Wire, Buss (Size 22)		
X	5	WL-100-8	Wire, Buss (Size 24)		
3	4	LWEO6MRC	Lockwasher, Ext.		
3	3	SCB506328C6	Screw, Machine		
3	2	MS-1027	Bracket, Angle, T.B.		
1	1	A-1366	Terminal Bd. No. 2 Sub-Ass'y.		



D	2	R1 JUMPER ADDED	7/25	4	sc	P.L.K.	A.J.J.
C	1	PICTORIAL REVISED	5/22/57	3	sc	P.L.K.	A.J.J.
B	4	ITEM 14 WAS CC-100-28	5/22/57	3	sc	P.L.K.	A.J.J.
	3	ASTERISK NOTE & JUMPER DETAIL ADDED					
A	2	C6-R4 JUMPER ADDED	4/22/57	2	16	P.L.K.	A.J.J.
	1	C1 LEAD ADDED					
	1	1/4" ADDED TO ALL LEADS	4/5/57	1	16	P.L.K.	A.J.J.
A	1	ITEM 25 WAS RC20GF473K	4/5/57	1	16	P.L.K.	A.J.J.

ISSUE	ITEM	CHANGED FROM	DATE	CN. NO.	DRAFTS	CHECKER	ENG. APP.
TOLERANCES				SCALE:			
ALL OTHERS	DEC. DIM. ±	DRILL, PUNCH, COMMERCIAL STOCK SIZES AND MANUFACTURERS TOLERANCES ARE NOT INCLUDED.					
	FRAC. DIM. ±						
	ANGULAR DIM. ±						

1	M5R-1			3-5-57
REQ PER UNIT	MODEL	PROJECT NO.	ASS'Y. NO.	DATE

REQ. ITEM	PART NO.	DESCRIPTION	SYMBOL
#	#	THE TECHNICAL MATERIEL CORP. MAMARONECK, NEW YORK	
STOCK SIZE	#	TERMINAL BOARD NO. 2	
MATERIAL	WEIGHT PER PC.	FINAL ASS'Y. & STAMPING	
TYPE & TEMPER	163-5-57	P.L.K.	
HEAT TREAT. SPEC.	CHECKED	A.J.J.	
FINISH & SPEC. NO.			

A-1390 D