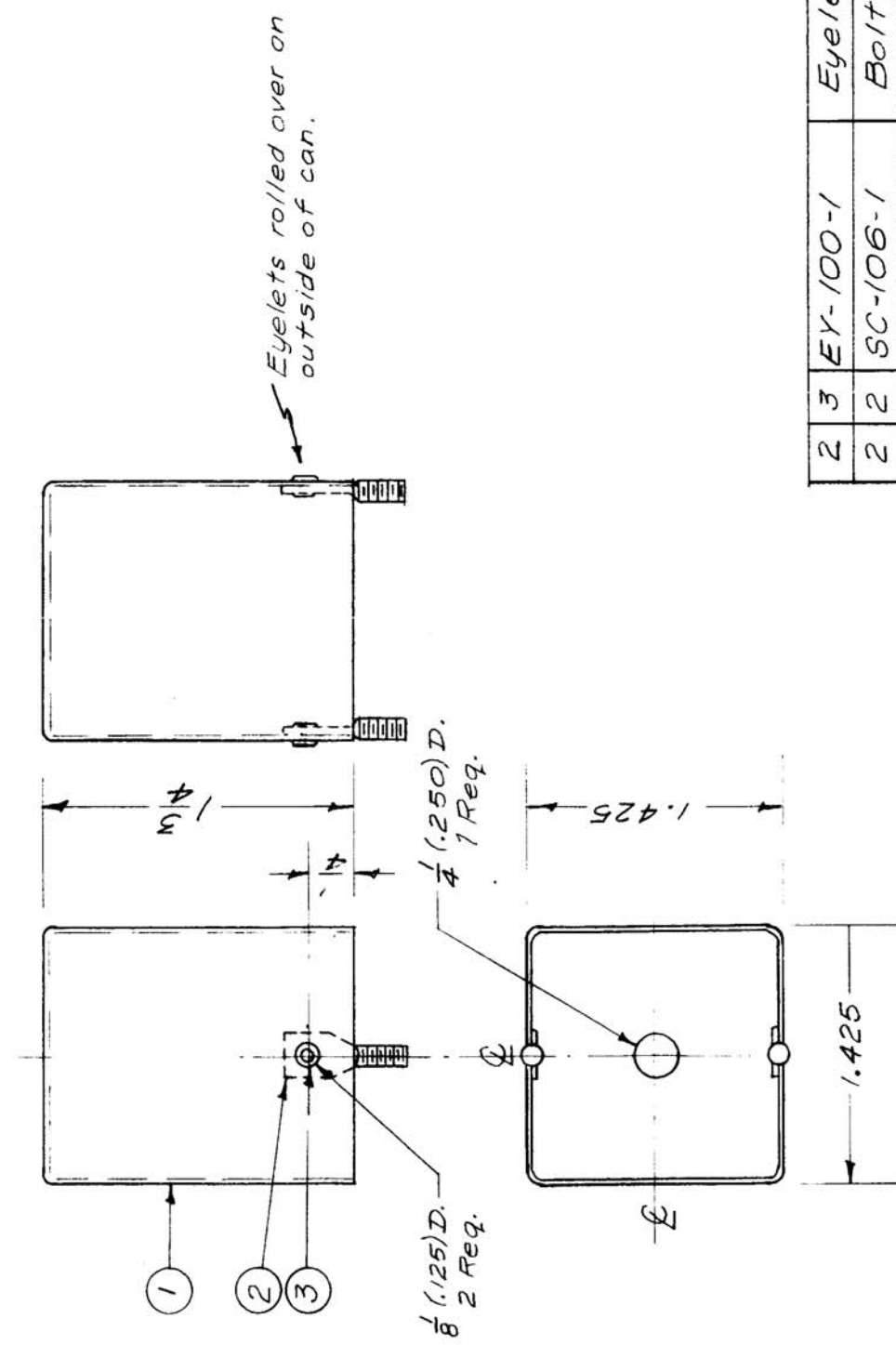


RE. PART UNIT	MODEL	ASSY. N.	DATE
1	MSR	A-1387	3-1-57
USED ON		A-1385	



REQ. ITEM	PART NO.	DESCRIPTION	SYMBOL
2 3	EY-100-1	Eyelet	
2 2	SC-106-1	Bolt, Spade, Straight Type	
1 1	FP-108-7	Can, Modified as Shown	
MATERIAL		THE TECHNICAL MATERIEL CORP. MAMARONECK. NEW YORK	
STOCK SIZE		CAN ASSEMBLY	
TYPE & TEMPER		CHECKED	
HEAT TREAT. SPEC.		DRAWN	
FINISH & SPEC. NO.		ELEC. DES. APP. MECH. DES. APP.	
DATE		SCALE:	
CH. NO.		MAXIMUM ALLOWABLE TOLERANCES HAVE BEEN DETERMINED AND ANY DEVIATIONS WILL BE CAUSE FOR REJECTION. REMOVE ALL BURRS AND SHARP EDGES	
DRAFTS		CHECKER	
ENG. APP.		TOLERANCES	
ISSUE ITEM		CHANGED FROM	
DEC. DIM. ±		FRAC. DIM. ±	
ANGULAR DIM. ±		FINAL APPROVAL	
		A-1385	