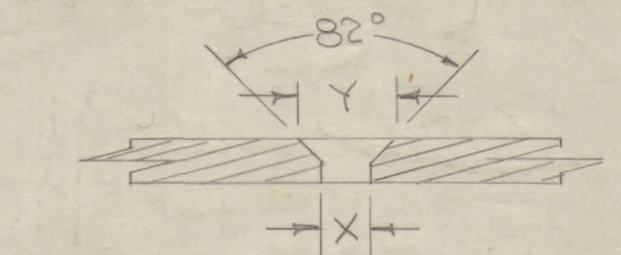


DESIRABLE TO CHANGE ANY TOLERANCE  
DETAIL SPECIFIED ON THIS DRAWING NOTIFY  
PURCHASER PROMPTLY.  
MAXIMUM ALLOWABLE TOLERANCES HAVE BEEN DETER-  
MINED AND DEVIATIONS WILL BE CAUSE FOR REJECTION.  
REMOVE ALL BURRS AND SHARP EDGES

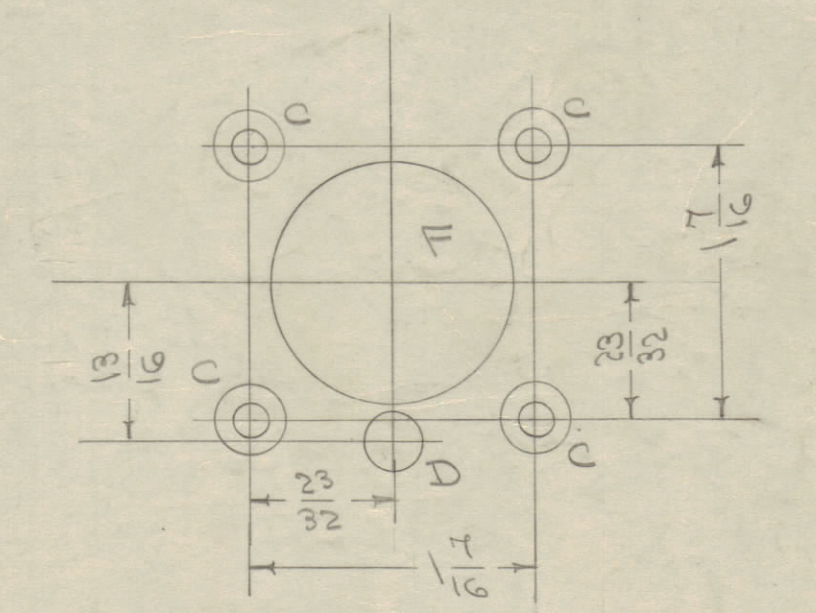
LEGEND  
A - #A7(.078) DIA. 3 HOLES REQ.  
B - DRILL & C'SINK #4 F.H.S. 8 " " " " } SEE CHART  
C - DRILL & C'SINK FOR #10 F.H.S. 6 " " " " }



DIM	#A F.H.S.	#10 F.H.S.
X	#31(.120)	#9(.196)
Y	.230	.390

D-.246±.003 DRILL  
(DRILL FOR TIGHT FIT (CLASS 6) OF BB-115 AFTER  
CAUSTIC DIP 4 HOLES REQ.)

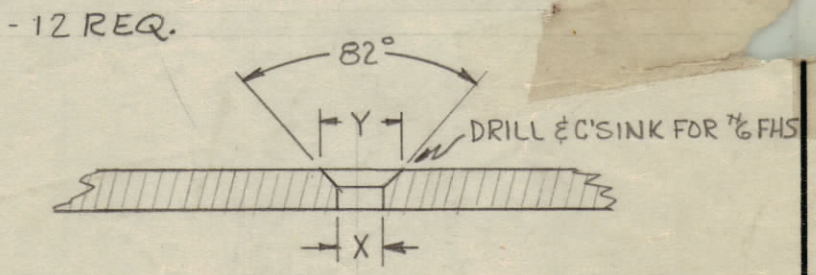
F - 5/16 (1.312) DIA. 4 HOLES REQ.



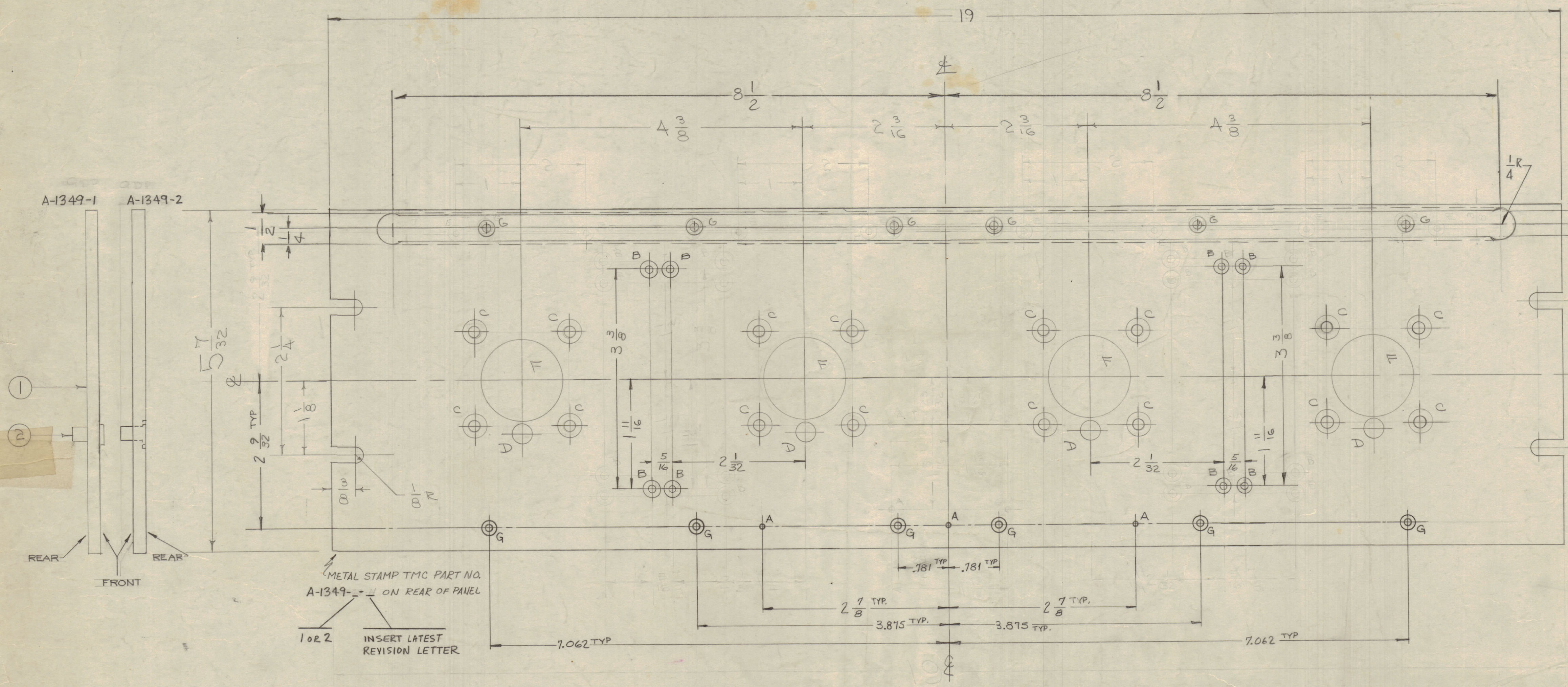
SEE CHART A

G-DRILL & C'SINK FOR #6 F.H.S. - 12 REQ.

DIM	6-32 F.H.S.
X	.144
Y	.284



NOTICE TO PERSONS RECEIVING THIS DRAWING  
THE TECHNICAL MATERIEL CORPORATION claims  
proprietary right in the material disclosed herein.  
This drawing is issued in confidence for engineering  
information only and may not be re-produced or used  
to manufacture anything shown herein without per-  
mission from THE TECHNICAL MATERIEL CORPORA-  
TION to the user. This drawing is loaned for mutual  
assistance and is subject to recall at any time.  
Property of:  
THE TECHNICAL MATERIEL CORPORATION  
MAMARONECK, NEW YORK



FRONT OF PANEL.

FRONT & EDGES ONLY

NOTE - FINISH  
S-404 IRIDIATE  
S-114 ZINC CHROMATE PRIMER  
S-115 SMOOTH GRAY ENAMEL  
OR PRIME & PAINT TO CUSTOMERS SPECIFICATION.  
NOTE THAT ALL "D" HOLES MUST BE 1/16" DEEP FROM REAR  
FREE OF PAINT.

CHART A

TMC NO.	QDP	"C" HOLES PART OF DETAIL F	"D" HOLES
A-1349-1	10476	C'SINK FOR #10 F.H.S.	AS SHOWN
A-1349-2	10476	13/64 D. CLEARANCE FOR #10 SCREW	C'BORE 1/32 X 1/16 DEEP FROM REAR

ISSUE	ITEM	CHANGED FROM	DATE	CN. NO.	DRAFTS	CHECKER	ENG. APP.
K	1	DELETED "E" HOLES "G" HOLES RELOCATED SLIT 17"x1/2" ADD	4-8-54	2050	GDL		OLB
J	1	DWG UPDATED	7-16-54	10476			
H	4	CHANGE 154 254 TO PROPER NOMEN.	10-9-54	133	GH		
H	3	13/64 C'SINK HOLES ADDED	10-9-54	62			
H	2	"D" HOLES RELOCATED	10-9-54	62			
H	1	"D" HOLE DELETED	10-9-54	62			
G	1	"D" - DRILL WAS 7/32 DIA.	1-24-54	6248	G.S.		
F	1	S-404 IRIDIATE WAS S-101 CAUSTIC DIP	11-17-54	1801	ABJ		EMN
F	1	DRILLING "Y" DIM WAS 339	11-17-54	5	ABJ		EMN
E	1	"B" HOLE LOCATION CORRECTED	11-17-54	4	ABJ		EMN
C	2	CHART "A" ADDED	7-9-54	3	EC		
B	1	"B" HOLES RELOCATED	7-9-54	2	ABJ		EMN
B	1	"F" HOLE WAS 1/4 D.	7-27-54	2	ABJ		EMN
A	1	ITEM 2 WAS BB-115	11-17-54	1	ABJ		EMN

ALL OTHERS	DEC. DIM ±	FRAC. DIM ±	ANGULAR DIM ±	DRILL PUNCH, COMMERCIAL STOCK SIZES AND MANUFACTURERS TOLERANCES ARE NOT INCLUDED.
	1/16	1/32	1/16	

REQ. PER UNIT	MODEL	PROJECT NO.	ASSY. NO.	DATE
1	QDP-2C2-S4	617		7-19-54
1	QDP-2C1-S4			9-11-54

REQ. ITEM	PART NO.	DESCRIPTION	SYMBOL
4	2	BB-115 BEARING, PANEL	
1	1	MS-988 FRONT PANEL (NO DWG)	
		8/16 THK	
		STOCK SIZE	
		ALUMINUM	
		MATERIAL	
		2024 T3	
		TYPE & TEMPER	
		HEAT TREAT. SPEC.	
		FINISH & SPEC. NO.	