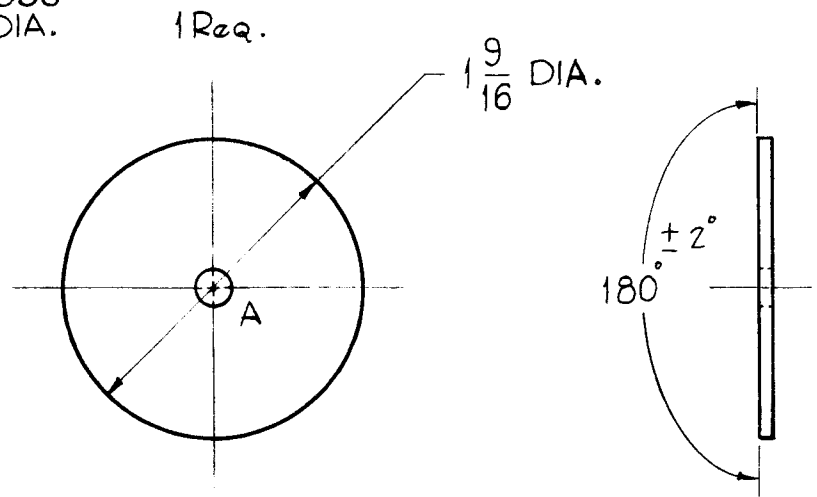


A-1338 E

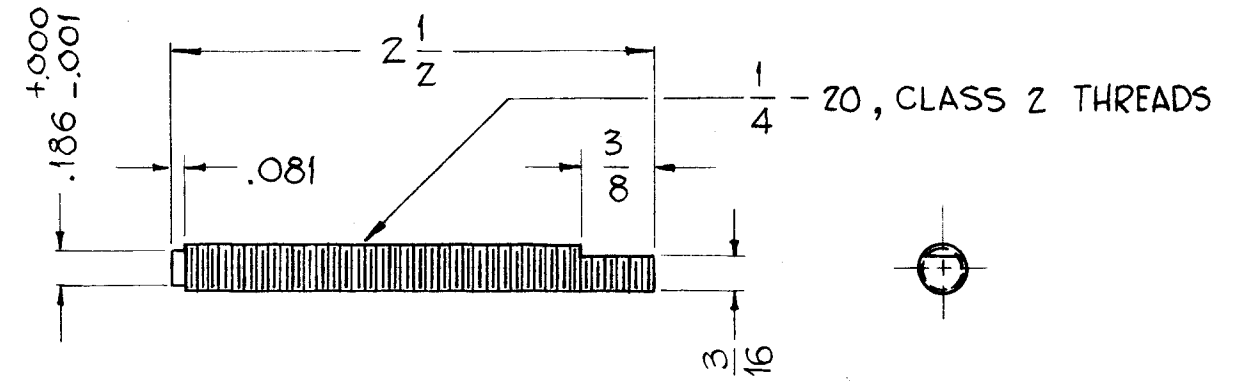
+0.001
-0.000
A ~ .187 DIA.



ROTOR, NEUTRALIZER

(1REQ.)

MATERIAL ~ 3/32 THICK, BRASS, HALF HARD



ROD, THREADED, NEUTRALIZER

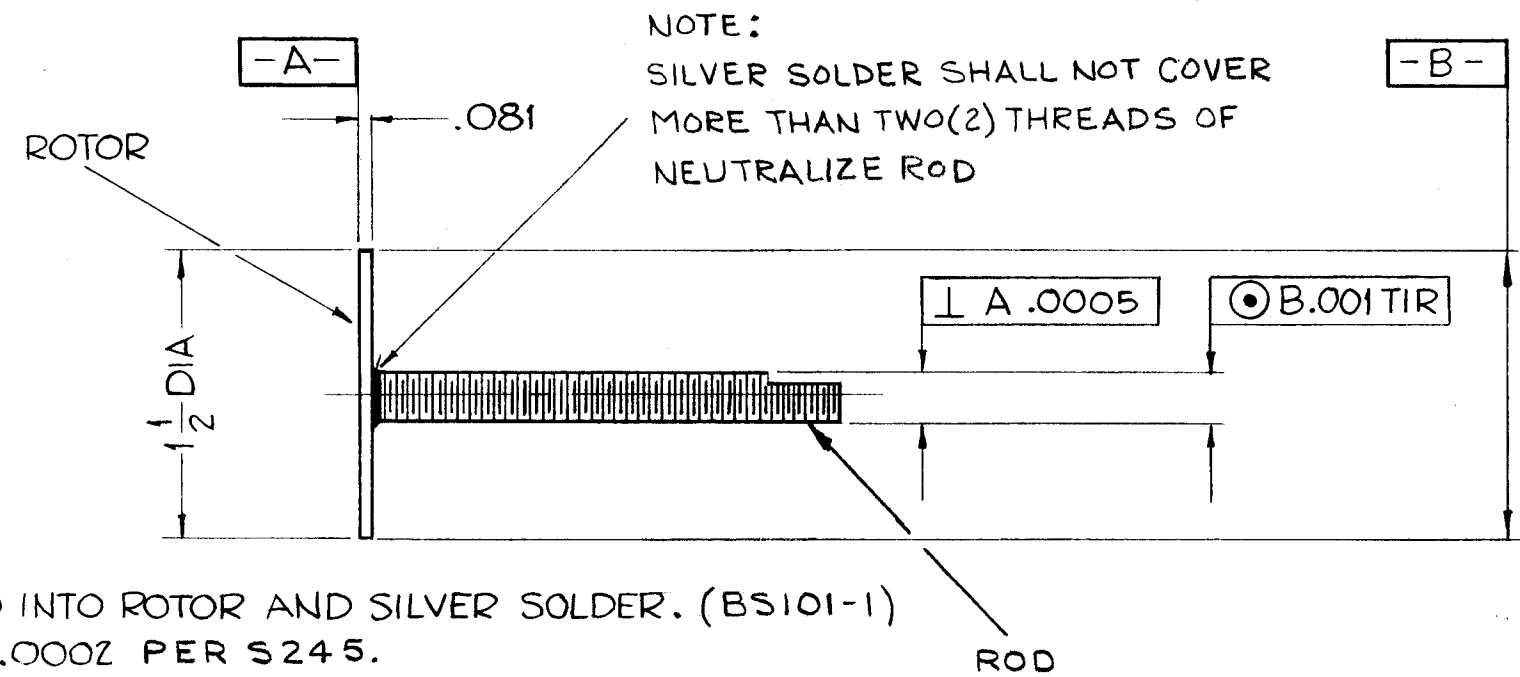
(1REQ.)

MATERIAL ~ BRASS, HALF HARD

NOTICE TO PERSONS RECEIVING THIS DRAWING

THE TECHNICAL MATERIEL CORPORATION claims proprietary right in the material disclosed hereon. This drawing is issued in confidence for engineering information only and may not be reproduced or used to manufacture anything shown hereon without permission from THE TECHNICAL MATERIEL CORPORATION to the user. This drawing is loaned for mutual assistance and is subject to recall at any time.

Property of:
THE TECHNICAL MATERIEL CORPORATION
MAMARONECK, NEW YORK



NOTES:

- 1- PRESS FIT ROD INTO ROTOR AND SILVER SOLDER. (BS101-1)
- 2- SILVER PLATE .0002 PER S245.
- 3- SILVER KOTE PER S423.

E	ON NOTES 1, 2 & 3, BS101-1, S245 & S423 ADDED	9/29/60	16901	JL	JCB	JCB	
D	SILVER SOLDER NOTE ADDED	10-25-62	7515	OH	JCB	JCB	
C	#3 Finish was Gold Plate .000025 On Rotor Detail THICKNESS WAS .081	3-30-61	4545	WAF	JCB	JCB	
B	Revised + Redrawn	9-29-60	3109	J.C.B.	JCB	JCB	
ISSUE	ITEM	CHANGED FROM	DATE	CH. NO.	DRAFTS	CHECKER	ENG. APP.
TOLERANCES			SCALE: FULL - DO NOT SCALE ~				
DEC. DIM. ±			MAXIMUM ALLOWABLE TOLERANCES HAVE BEEN DETERMINED AND ANY DEVIATIONS WILL BE CAUSE FOR REJECTION.				
FRAC. DIM. ± 1/64			REMOVE ALL BURRS AND SHARP EDGES				
ANGULAR DIM. ±							

1	RFB-1				
1	RTF-2	POWER/AMPL			
1	RTF				
REQ. PER UNIT	MODEL	PROJECT NO.	ASS'Y. NO.	DATE	
USED ON					

REQ. ITEM	PART NO.	DESCRIPTION	SYMBOL
		THE TECHNICAL MATERIEL CORP. MAMARONECK, NEW YORK	
		STOCK SIZE	
		NEUTRALIZER, PLATE ASSY	
		MATERIAL	
		J.C. Biele	JCB
		TYPE & TEMPER	CHECKED
		HEAT TREAT. SPEC.	FINAL APPROVAL
		See Note	
		FINISH & SPEC. NO.	
		ELEC. DES. APP.	MECH. DES. APP.
		A-1338 E	