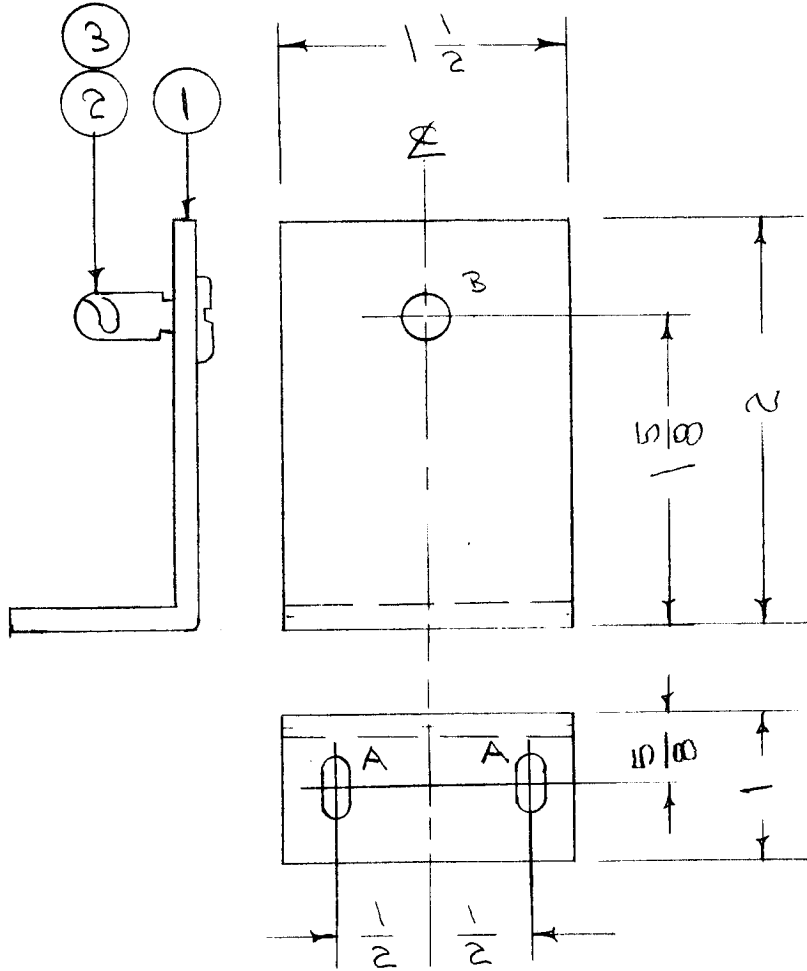


| | | | | | |
|---------------|-------|------------|---------|--------|---|
| REQ. PER UNIT | 459 | USED ON | | A-1316 | C |
| | MODEL | ASS'Y. NO. | DATE | | |
| 1 | GSB-1 | | 5-17-56 | | |



A - 5/32 x 5/16 SLOT
 B - 1/4 (.250) D.

2 SLOTS REQ
 1 HOLE "

| | | | | |
|---|---|----------|------------------------|--|
| 1 | 3 | FS-110-4 | STUD, SLOTTED HEAD | |
| 1 | 2 | FS-109 | RING, RETAINING | |
| 1 | 1 | MS-9A3 | REAR SUPPORT (NO DWG.) | |

| | | | | | |
|---|---|------------------------------------|---------|------|-----|
| C | 1 | S-404 IRIDITE W/ S-101 CAUSTIC DIP | 2-7-59 | 1001 | EMN |
| B | 1 | 5/8 WAS 3/8 1 WAS 3/4 | 4/14/56 | 2 | JMD |
| A | 2 | Hem 3 Was FS-110-1 | 7-26-57 | 1 | JMD |
| | 1 | 2" Was 2 1/8 | | | |

| | | | |
|--------------------|-------------------|--|----------------|
| REQ. ITEM | PART NO. | DESCRIPTION | SYMBOL |
| | 2 x 1 x 1/8 | THE TECHNICAL MATERIEL CORP. MAMARONECK, NEW YORK | |
| | ALUMINUM | REAR SUPPORT ASSY., CHASSIS | GSB-1 |
| | 5052 H32 | 5052 H32 | |
| TYPE & TEMPER | HEAT TREAT. SPEC. | DRAWN | CHECKED |
| S404-IRIDITE | | HH | 2B |
| FINISH & SPEC. NO. | ELEC. DES. APP. | MECH. DES. APP. | |
| | | | FINAL APPROVAL |
| | | | A-1316 |
| | | | C |

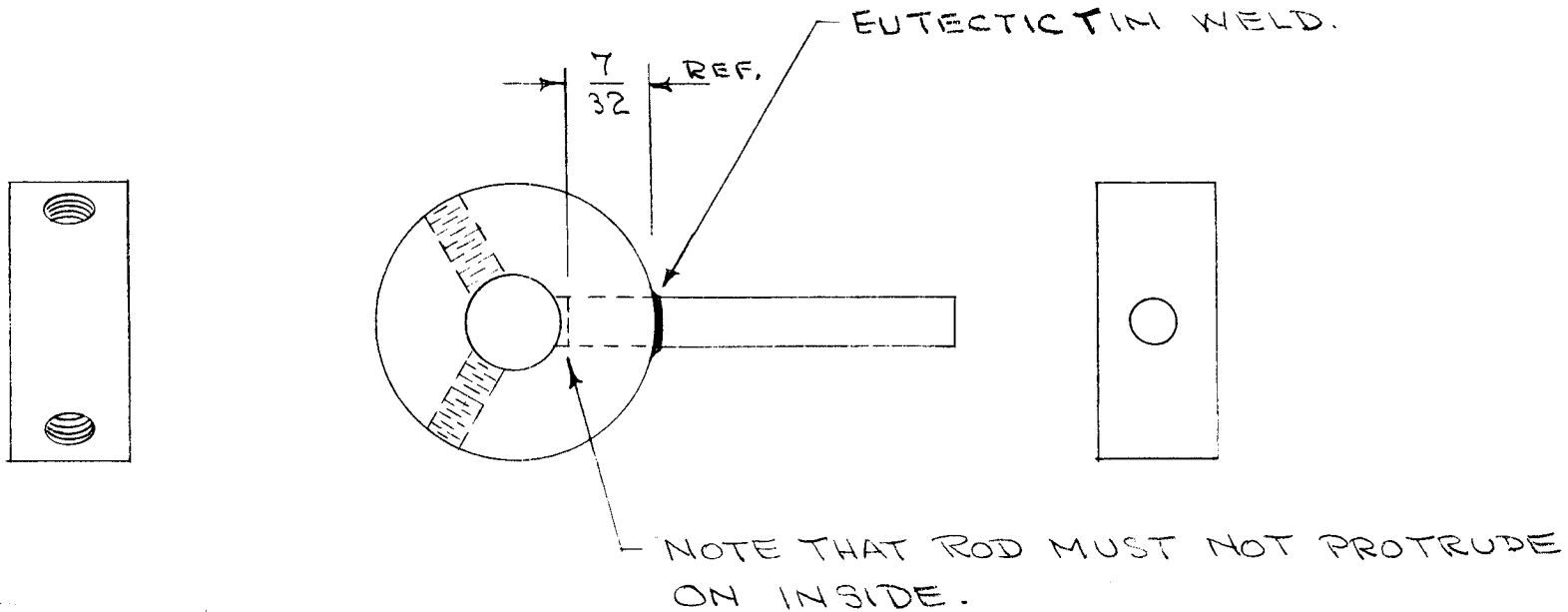
ISSUE ITEM CHANGED FROM DATE CH. NO. DRAFTS CHECKER ENG. APP.

TOLERANCES SCALE:

DEC. DIM. ±
 FRAC. DIM. ±1/64
 ANGULAR DIM. ±

MAXIMUM ALLOWABLE TOLERANCES HAVE BEEN DETERMINED AND ANY DEVIATIONS WILL BE CAUSE FOR REJECTION. REMOVE ALL BURRS AND SHARP EDGES

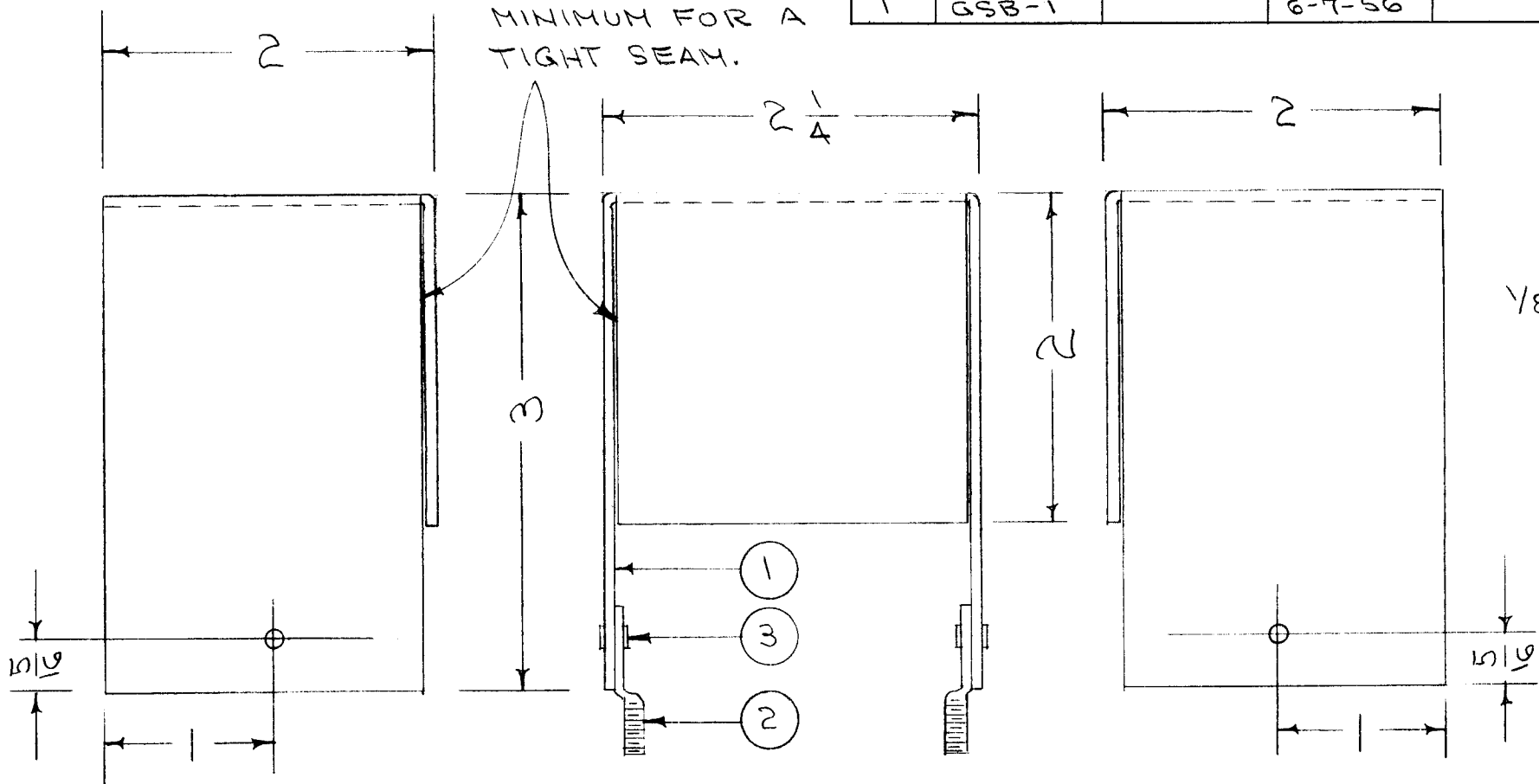
| | | | | |
|---------------|-------|------------|--------|--------|
| REQ. PER UNIT | 459 | USED ON | | A-1323 |
| | MODEL | ASS'Y. NO. | DATE | |
| 1 | G8B-1 | | 6-6-56 | |



| | | | |
|---|---|--------|---------------------|
| X | 3 | BS-104 | EUTECTIC TIN WELD |
| 1 | 2 | PM-419 | COUPLING, CAP. STOP |
| 1 | 1 | PM-418 | STOP, CAPACITOR |

| REQ. | ITEM | PART NO. | DESCRIPTION | SYMBOL | | | | | | | | |
|----------------|------|--------------|---|---------|--------------------|------------------|-----------------|-------------------|-----------------|---------|----------------|--------|
| | | | THE TECHNICAL MATERIEL CORP. MAMARONECK. NEW YORK | | | | | | | | | |
| STOCK SIZE | | | CAPACITOR STOP ASSEMBLY | | | | | | | | | |
| MATERIAL | | | G8B-1 | | | | | | | | | |
| ISSUE | ITEM | CHANGED FROM | DATE | CH. NO. | DRAFTS | CHECKER | ENG. APP. | DRAWN | | CHECKED | FINAL APPROVAL | |
| TOLERANCES | | | SCALE: | | | | | 000 6/6/56 | false | | WDC | |
| DEC. DIM. ± | | | MAXIMUM ALLOWABLE TOLERANCES HAVE BEEN DETERMINED AND ANY DEVIATIONS WILL BE CAUSE FOR REJECTION. REM VE ALL BURRS AND SHARP EDGES | | | TYPE & TEMPER | | HEAT TREAT. SPEC. | DRAWN | | CHECKED | A-1323 |
| FRAC. DIM. ± | | | | | | S-105 CAD. PLATE | | .0002 | | | | |
| ANGULAR DIM. ± | | | | | FINISH & SPEC. NO. | | ELEC. DES. APP. | | MECH. DES. APP. | | | |

KEEP NOTCH TO MINIMUM FOR A TIGHT SEAM.



BLANK SIZE
8^{3/32} x 3^{59/64}

| | | | |
|---------------|-------|------------|--------|
| REQ. PER UNIT | 459 | USED ON | |
| | MODEL | ASS'Y. NO. | DATE |
| 1 | GSB-1 | | 6-7-56 |

A-1324 A

| | | | |
|---|---|----------|---------------------------|
| 2 | 3 | EY-100-2 | EYELET, FLAT FLANGE |
| 2 | 2 | SC-107-1 | LUG, SPADE |
| 1 | 1 | MS-952 | CAPACITOR COVER (NO DWG.) |

| REQ. ITEM | PART NO. | DESCRIPTION | SYMBOL |
|--------------------|----------|---|-------------------|
| .051 | | THE TECHNICAL MATERIEL CORP. | |
| STOCK SIZE | | MAMARONECK. NEW YORK | |
| ALUMINUM | | CAPACITOR COVER ASSEMBLY. | |
| MATERIAL | | GSB-1 | |
| ISSUE | ITEM | CHANGED FROM | DATE |
| A | 1 | S404-IRIDITE WAS S101-CAUSTIC DIP | 12-7-59 |
| TOLERANCES | | SCALE: | |
| DEC. DIM. ± | | MAXIMUM ALLOWABLE TOLERANCES HAVE BEEN DETERMINED AND ANY DEVIATIONS WILL BE CAUSE FOR REJECTION. | |
| FRAC. DIM. ±1/64 | | REMOVE ALL BURRS AND SHARP EDGES | |
| ANGULAR DIM. ± | | | |
| 5052-H32 | | TYPE & TEMPER | HEAT TREAT. SPEC. |
| S404-IRIDITE | | DRAWN | |
| FINISH & SPEC. NO. | | CHECKED | |
| ELEC. DES. APP. | | MECH. DES. APP. | |
| | | FINAL APPROVAL | |
| | | A-1324 A | |

IF IT IS FOUND DESIRABLE TO CHANGE ANY TOLERANCE OR OTHER DETAIL SPECIFIED ON THIS DRAWING NOTIFY THE PURCHASER PROMPTLY.

STANDARD DRAWING

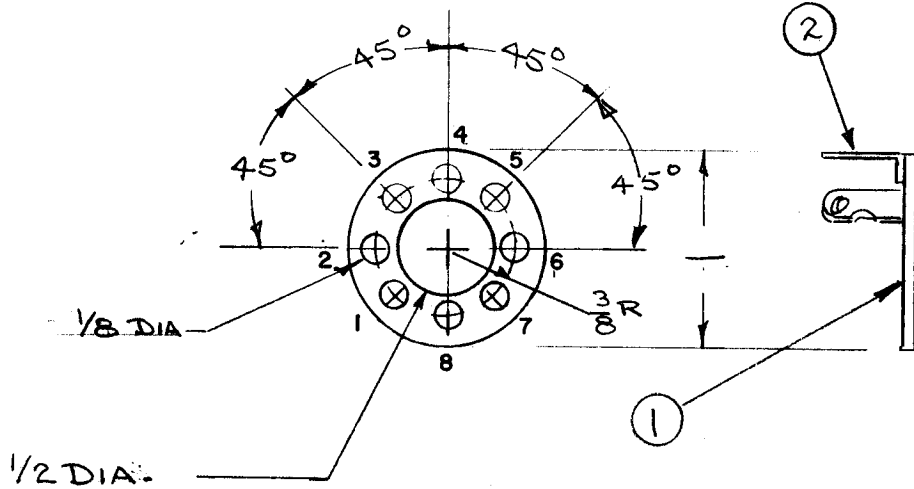
A-1327 E

MAXIMUM ALLOWABLE TOLERANCES HAVE BEEN DETERMINED AND DEVIATIONS WILL BE CAUSE FOR REJECTION. REMOVE ALL BURRS AND SHARP EDGES

USED ON

| MODEL | PROJECT NO. | ASS'Y. NO. | DATE |
|-------|-------------|------------|------|
|-------|-------------|------------|------|

| TMC PART NO | "X" DENOTES POSITIONS REQUIRING TERMINAL LUGS | | | | | | | |
|-------------|---|---|---|---|---|---|---|---|
| | 1 | 2 | 3 | 4 | 5 | 6 | 7 | 8 |
| A-1327-1 | X | | | | | | | |
| -2 | X | X | | | | | | |
| -3 | X | X | X | | | | | |
| -4 | X | X | X | X | | | | |
| -5 | X | X | X | X | X | | | |
| -6 | X | X | X | X | X | X | | |
| -7 | X | X | X | X | X | X | X | |
| -8 | X | X | X | X | X | X | X | X |
| -9 | | | X | | X | | | |

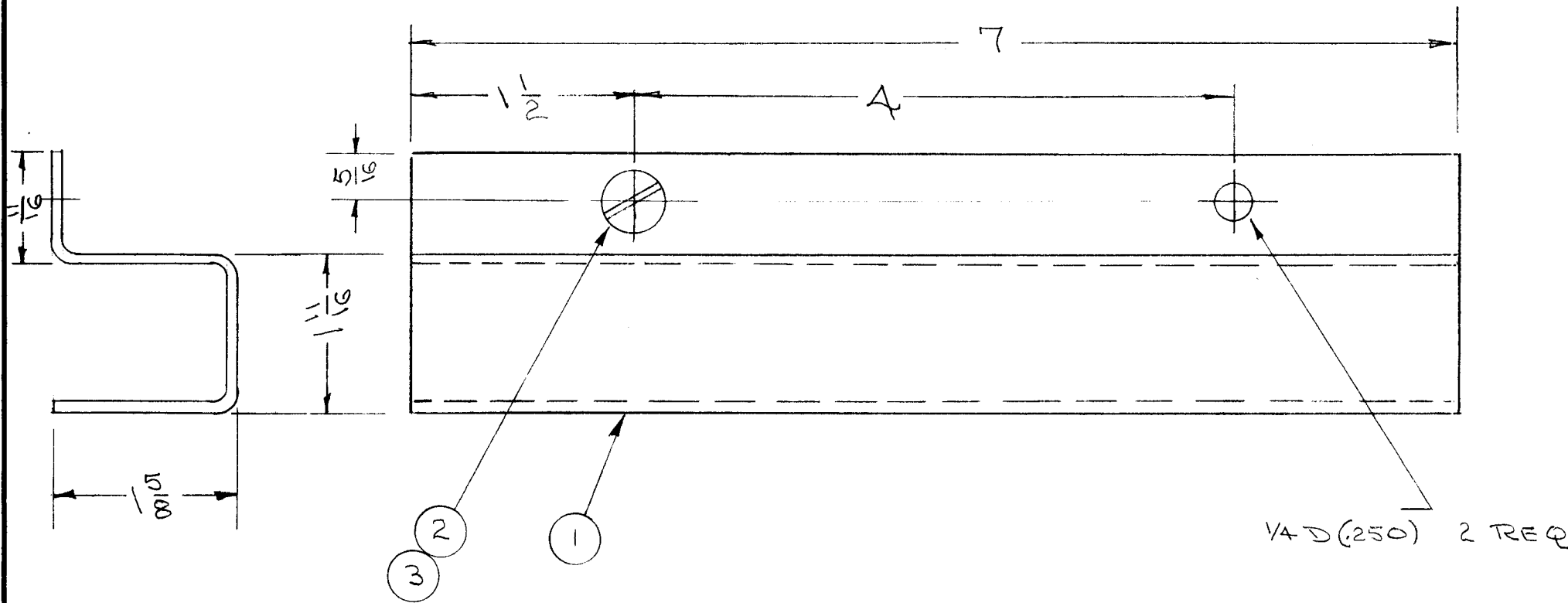


| REQ. | ITEM | PART NO. | DESCRIPTION | SYMBOL |
|--------------------|--------|----------|--|--------|
| 2 | TE-151 | | LUG, TERMINAL | |
| 1 | IM-168 | | INSULATOR (NO DWG) | |
| .015 | | | THE TECHNICAL MATERIEL CORP. | |
| STOCK SIZE | | | MAMARONECK. NEW YORK | |
| FISH PAPER | | | INSULATOR, SUB ASSY | |
| MATERIAL | | | WEIGHT PER PC. | |
| TYPE & TEMPER | | | DRAWN: JAW, ELEC. DES. APP. AJJ, MECH. DES. APP. WOC | |
| HEAT TREAT. SPEC. | | | CHECKED: SUPERSEDES A-1065, FINAL APPROVAL: A-1327 E | |
| FINISH & SPEC. NO. | | | | |

| ISSUE | ITEM | CHANGED FROM | DATE | CN. NO. | DRAFTS | CHECKER | ENG. APP. |
|-------|------|-----------------------|---------|---------|--------|---------|-----------|
| E | 1 | A-1327-9 ADDED | 4-11-62 | 6605 | JE | | |
| D | 1 | A-1327-5 THRU 8 ADDED | 2-14-61 | 4131 | WHE | | |
| C | 2 | CHART ADDED | 5/18/50 | 3 | JAW | | |
| C | 1 | PICTORIAL CLARIFIED | | | | | |
| B | 1 | DRG NO. CLARIFIED | 9/24/56 | 2 | JAW | | |
| A | 1 | TERM. REQ ADDED | 6/21/56 | 1 | JAW | | |

| TOLERANCES | | SCALE |
|------------|---|---|
| ALL OTHERS | DEC. DIM. ± FRAC. DIM. ± ANGULAR DIM. ± | DRILL, PUNCH, COMMERCIAL STOCK SIZES AND MANUFACTURERS TOLERANCES ARE NOT INCLUDED. |

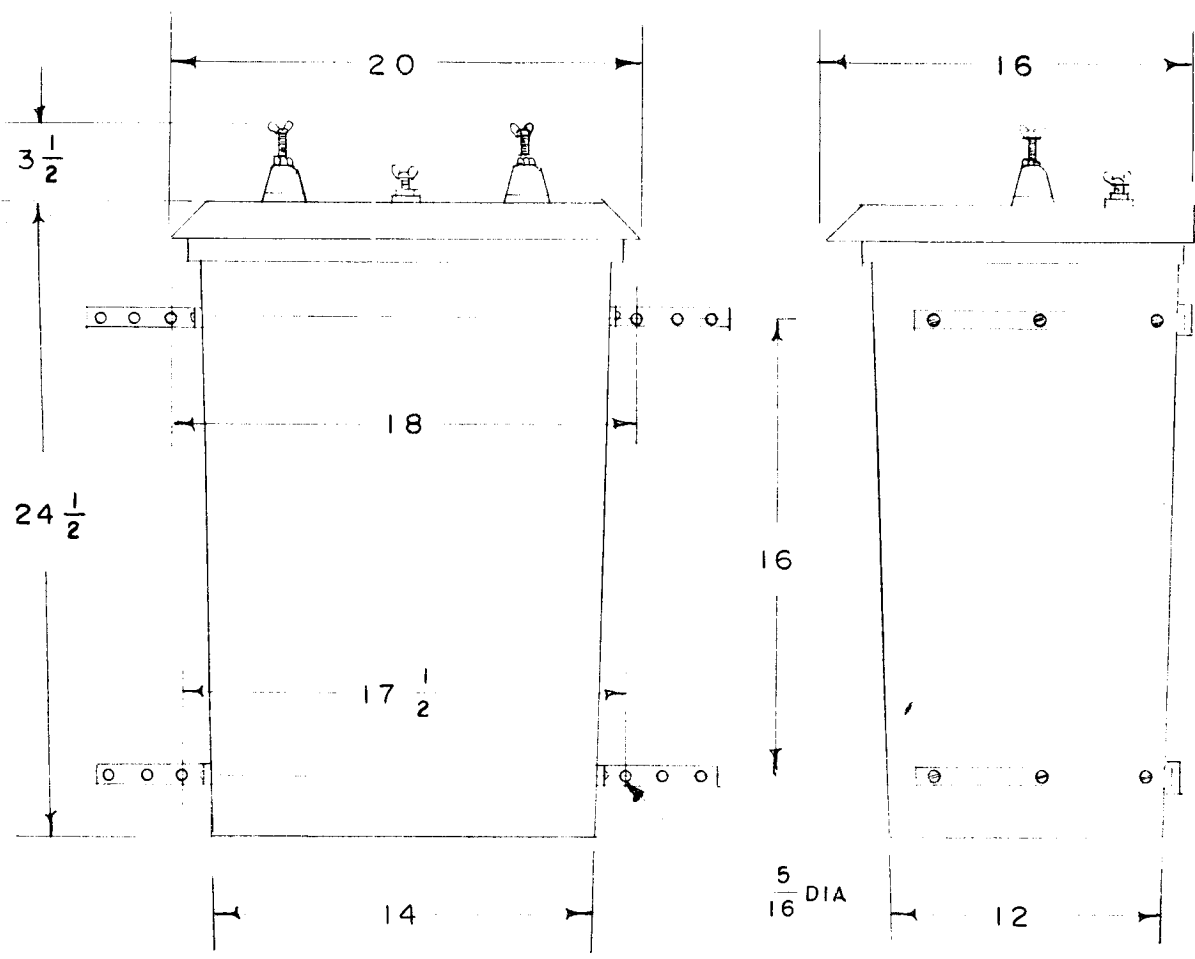
| | | | | |
|---------------|---------|------------|---------|---|
| REQ. PER UNIT | USED ON | | A-1331 | A |
| | MODEL | ASS'Y. NO. | | |
| 1 | CAB/FR | | 7/31/56 | |



| | | | | |
|---|---|----------|----------------------|--|
| 2 | 3 | FS-109-3 | RING, STUD RETAINING | |
| 2 | 2 | FS-110-A | STUD, SLOTTED HEAD | |
| 1 | 1 | MS-955 | COVER (NO DWG.) | |

| ISSUE | ITEM | CHANGED FROM | DATE | CH. NO. | DRAFTS | CHECKER | ENG. APP. | REQ. ITEM | PART NO. | DESCRIPTION | SYMBOL | | |
|--|------|----------------------------|---------|---------|--------|---------|-----------|-----------------------|----------|------------------------------|----------------------|-----------------|--|
| A | 1 | FINISH WAS S-245 (wrinkle) | 6/16/58 | 1 | YO | | | 2 | 3 | FS-109-3 | RING, STUD RETAINING | | |
| | | | | | | | | .064 | | THE TECHNICAL MATERIEL CORP. | | | |
| | | | | | | | | STOCK SIZE | | MAMARONECK. NEW YORK | | | |
| | | | | | | | | ALUMINUM | | COVER, TERMINAL STRIP E501 | | | |
| | | | | | | | | MATERIAL | | CAB/FR GPT-750 | | | |
| TOLERANCES | | | | | | | | 5052-H32 | | DRAWN | | CHECKED | |
| SCALE: | | | | | | | | TYPE & TEMPER | | HEAT TREAT. SPEC. | | FINAL APPROVAL | |
| DEC. DIM. ± | | | | | | | | RCAF Semi Gloss | | | | WDC | |
| FRAC. DIM. ± | | | | | | | | Blue/Grey Enamel S220 | | | | A-1331 | |
| ANGULAR DIM. ± | | | | | | | | FINISH & SPEC. NO. | | ELEC. DES. APP. | | MECH. DES. APP. | |
| MAXIMUM ALLOWABLE TOLERANCES HAVE BEEN DETERMINED AND ANY DEVIATIONS WILL BE CAUSE FOR REJECTION. REMOVE ALL BURRS AND SHARP EDGES | | | | | | | | | | | | A | |

| | | | | |
|---------------|---------|---------|-----------|---------|
| REQ. PER UNIT | 529 | USED ON | | A-1337 |
| | | MODEL | ASSY. NO. | |
| 1 | TER-500 | | | 8-22-56 |



ELECTRICAL SPECIFICATIONS
 RESISTANCES - TER-500
 NOMINALLY 600 OHMS
 DISSIPATION RATING - UP TO
 500 WATTS AT 30 MCS

MECHANICAL SPECIFICATIONS
 CASE - FIBREGLASS REINFORCED
 PLASTIC

| REQ. | ITEM | PART NO. | DESCRIPTION | | SYMBOL |
|------|------|----------|-------------------------------------|-----------------|-----------------|
| | | | THE TECHNICAL MATERIEL CORP. | | |
| | | | MAMARONECK. NEW YORK | | |
| | | | MODEL TER-500 | | |
| | | | MATERIAL | | |
| | | | CDD 8-22-56 | <i>JH</i> | <i>AMB</i> |
| | | | TYPE & TEMPER | CHECKED | FINAL APPROVAL |
| | | | HEAT TREAT. SPEC. | <i>MP</i> | A-1337 |
| | | | FINISH & SPEC. NO. | ELEC. DES. APP. | MECH. DES. APP. |

ISSUE ITEM CHANGED FROM DATE CH. NO. DRAFTS CHECKER ENG. APP.

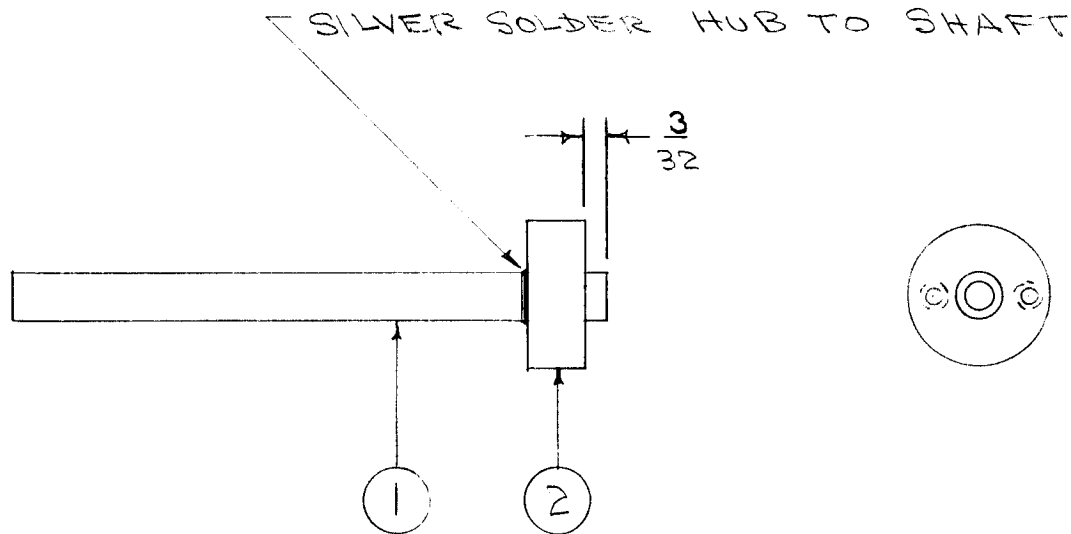
TOLERANCES

DEC. DIM. ±
 FRAC. DIM. ±
 ANGULAR DIM. ±

SCALE:

MAXIMUM ALLOWABLE TOLERANCES HAVE BEEN DETERMINED AND ANY DEVIATIONS WILL BE CAUSE FOR REJECTION.
 REMOVE ALL BURRS AND SHARP EDGES

| | | | | |
|---------------|-------|------------|---------|--------|
| REQ. PER UNIT | 610 | USED ON | | A-1343 |
| | MODEL | ASS'Y. NO. | DATE | |
| 1 | RTF | | 8-31-56 | |



| | | | | |
|---|---|----------|---------------|--|
| X | 3 | BS-101-1 | SILVER SOLDER | |
| 1 | 2 | PM-425 | HUB | |
| 1 | 1 | PM-424 | SHAFT | |

| ISSUE | ITEM | CHANGED FROM | DATE | CH. NO. | DRAFTS | CHECKER | ENG. APP. | REQ. ITEM | PART NO. | DESCRIPTION | SYMBOL | | |
|----------------|------|--------------|---|---------|--------|---------|-----------|---|----------|-------------------|--------------------|--------------------|----------------|
| | | | | | | | | | | | | | |
| | | | | | | | | THE TECHNICAL MATERIEL CORP. MAMARONECK, NEW YORK | | | | | |
| | | | | | | | | SHAFT ASSY., CAP. INC. SW. | | | | | |
| | | | | | | | | MATERIAL | | P/A | RTF | | |
| TOLERANCES | | | SCALE: | | | | | | | DD 8/31/56 | <i>[Signature]</i> | <i>[Signature]</i> | |
| DEC. DIM. ± | | | MAXIMUM ALLOWABLE TOLERANCES HAVE BEEN DETERMINED AND ANY DEVIATIONS WILL BE CAUSE FOR REJECTION. REM VE ALL BURRS AND SHARP EDGES | | | | | TYPE & TEMPER | | HEAT TREAT. SPEC. | DRAWN | CHECKED | FINAL APPROVAL |
| FRAC. DIM. ± | | | | | | | | S-105 CADMIUM PLATE | | .0002 | | <i>[Signature]</i> | |
| ANGULAR DIM. ± | | | | | | | | FINISH & SPEC. NO. | | ELEC. DES. APP. | MECH. DES. APP. | | |

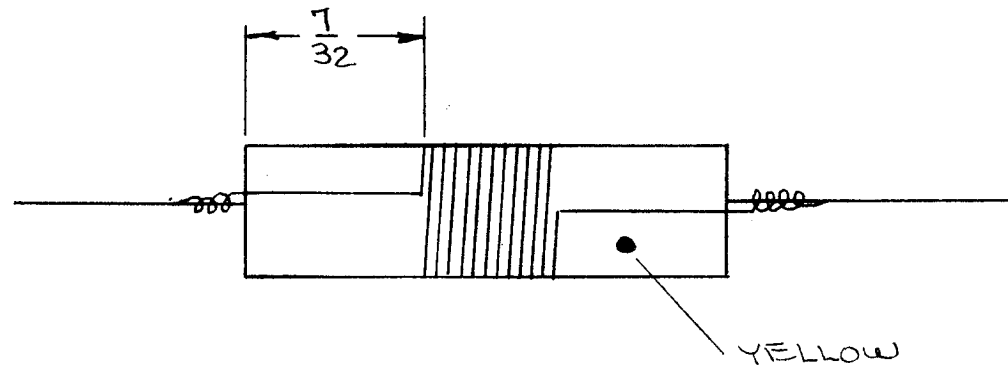
| | | | | |
|---------------|---------|------------|---------|--------|
| REQ. PER UNIT | USED ON | | | A-1384 |
| | MODEL | ASS'Y. NO. | DATE | |
| 1 | GPR | | 9/10/56 | |

WINDING:

14 turns of item 2
close wound

FABRICATION:

1. Wind as specified.
2. Stake leads with item 4.
3. Solder leads as shown.
4. Coat with item 3.
5. Bake 1 hour at 150°C.
6. Color code as shown.
7. Test lectrical characteristics on Boonton Q Meter 160 A or equivalent.



THIS DWG. FOR USE ONLY WITH
MARK II SERIES & KIT S-305

ELECTRICAL DATA:

L - 3.03 μ hy (2.88 - 3.18)
Q - >110
F - 7.9 Mc.

| REQ. | ITEM | PART NO. | DESCRIPTION | SYMBOL |
|------|------|------------|---------------------|--------|
| X | 5 | BS-100 | Solder, Soft | |
| X | 4 | GL-103 | Cement | |
| X | 3 | GL-104-2 | Cement U85 | |
| X | 2 | WI- 107-13 | Wire No. 32 DSC | |
| 1 | 1 | CI-114 | Core, Powdered Iron | |

| ISSUE | ITEM | CHANGED FROM | DATE | CH. NO. | DRAFTS | CHECKER | ENG. APP. |
|--------------------|------|--------------|--|---------|--------|---------|-----------|
| TOLERANCES | | | SCALE: | | | | |
| DEC. DIM. \pm | | | MAXIMUM ALLOWABLE TOLERANCES HAVE BEEN DETERMINED AND ANY DEVIATIONS WILL BE CAUSE F R REJECTION. REMOVE ALL BURRS AND SHARP EDGES | | | | |
| FRAC. DIM. \pm | | | | | | | |
| ANGULAR DIM. \pm | | | | | | | |

| | | | |
|--|-------------------|-----------------|-----------------|
| THE TECHNICAL MATERIEL CORP. MAMARONECK. NEW YORK | | | |
| COIL SUB-ASSEMBLY, 7.85 MC. INTERMOD. | | | |
| FILTER L35 | | | |
| MATERIAL | | STOCK SIZE | |
| TYPE & TEMPER | HEAT TREAT. SPEC. | DRAWN | CHECKED |
| FINISH & SPEC. NO. | | ELEC. DES. APP. | MECH. DES. APP. |
| | | A. I. J. | |
| | | A-1344 | |

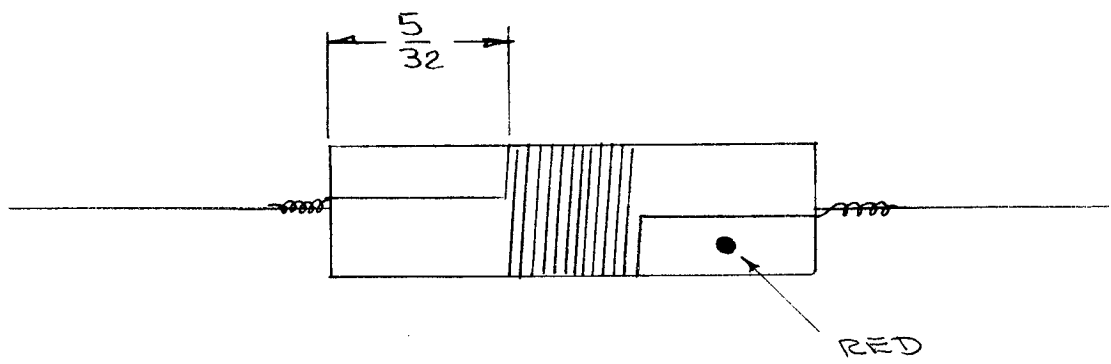
| | | | | |
|--------------------|----------------|-----------------------|-----------------|--------|
| REQ. PER UNIT 3 | MODEL G P R | USED ON ASS'Y. NO. | DATE 9/10/56 | A-1345 |
| | | | | |

WINDING

21 3/4 turns of item 2
close wound

FABRICATION

1. Wind as specified.
2. Stake leads with item 4.
3. Solder leads as shown.
4. Coat with item 3
5. Bak 1 hour at 150°C.
6. Color code as shown.
7. Test electrical characteristics on Boonton Q Meter 160 A or equivalent



THIS DWG. FOR USE ONLY WITH
MARK II SERIES & KIT S-305

ELECTRICAL DATA

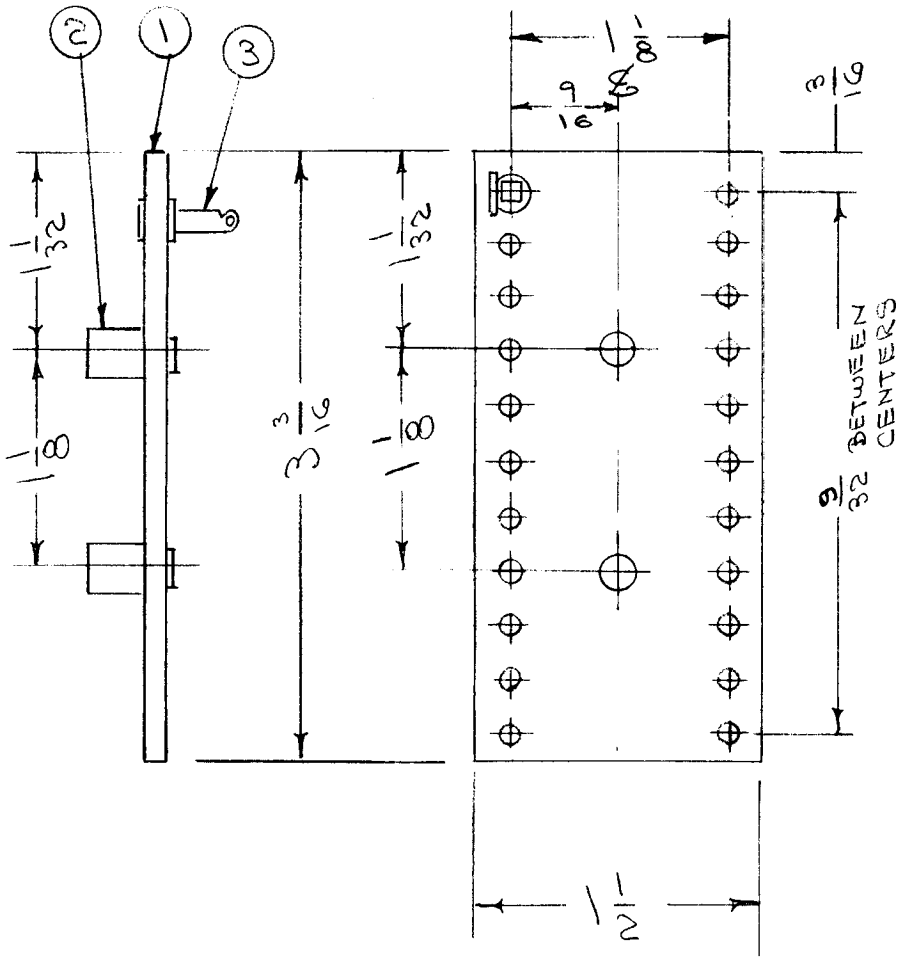
L - 5.57 μ hy (5.32-5.82)
Q - >120
F - 7.9 Mc.

| REQ. ITEM | PART NO. | DESCRIPTION | SYMBOL |
|-----------|-----------|---------------------|--------|
| X 5 | BS-100 | Solder, Soft | |
| X 4 | GL-103 | Cement | |
| X 3 | GL-104-2 | Cement U85 | |
| X 2 | WI-107-13 | Wire No. 32 DSC | |
| 1 1 | CI- 114 | Core, Powdered Iron | |

| ISSUE | ITEM | CHANGED FROM | DATE | CH. NO. | DRAFTS | CHECKER | ENG. APP. |
|--------------------|------|--------------|--|---------|--------|---------|-----------|
| TOLERANCES | | | SCALE: | | | | |
| DEC. DIM. \pm | | | MAXIMUM ALLOWABLE TOLERANCES HAVE BEEN DETERMINED AND ANY DEVIATIONS WILL BE CAUSE FOR REJECTION. REMOVE ALL BURRS AND SHARP EDGES | | | | |
| FRAC. DIM. \pm | | | | | | | |
| ANGULAR DIM. \pm | | | | | | | |

| | | | |
|--------------------|-------------------|--|-----------------|
| STOCK SIZE | | THE TECHNICAL MATERIEL CORP. MAMARONECK. NEW YORK | |
| MATERIAL | | COIL SUB-ASSEMBLY, 4.5 MC. INTERMOD. FILTER L32,33,34 | |
| TYPE & TEMPER | HEAT TREAT. SPEC. | DRAWN | CHECKED |
| FINISH & SPEC. NO. | | ELEC. DES. APP. | MECH. DES. APP. |
| | | A. J. J. | |
| | | A-1345 | |

| | | | | |
|---------------|---------|----------|---------|--------|
| REQ. PER UNIT | USED ON | | | A-1346 |
| | MODEL | ASSY. N. | DATE | |
| 1 | GPR-90 | A-1344 | 9-10-50 | |



A - # 12 (.189) DIA 2 HOLES REQ.
 B - # 29 (.140) " 22 " "

THIS DWG. FOR USE ONLY WITH
 MARK II SERIES & KIT S-305.

| | | | |
|----|---|----------|------------------------|
| 22 | 3 | TE-151 | LUG |
| 2 | 2 | TE-108-1 | STANDOFF |
| 1 | 1 | PX-345 | TERM. BD. (NO DRAWING) |

| | | | | | | | |
|-------|------|--------------|------|---------|--------|---------|-----------|
| ISSUE | ITEM | CHANGED FROM | DATE | CH. NO. | DRAFTS | CHECKER | ENG. APP. |
| | | | | | | | |

| | | | |
|--------------------|-------------------|----------------------------------|-----------------|
| REQ. ITEM | PART NO. | DESCRIPTION | SYMBOL |
| | 1/16 THK. | THE TECHNICAL MATERIEL CORP. | |
| | STOCK SIZE | MAMARONECK, NEW YORK | |
| | PHENOLIC | TERM. BD. SUB ASSY. | |
| | MATERIAL | HIPASS FILTERS 1.8-4.5 MC GPR-90 | |
| XXXP LAMINATE | | CDD 9/10/50 | |
| TYPE & TEMPER | HEAT TREAT. SPEC. | DRAWN | CHECKED |
| NATURAL | | | |
| FINISH & SPEC. NO. | | ELEC. DES. APP. | MECH. DES. APP. |
| | | | A-1346 |

TOLERANCES

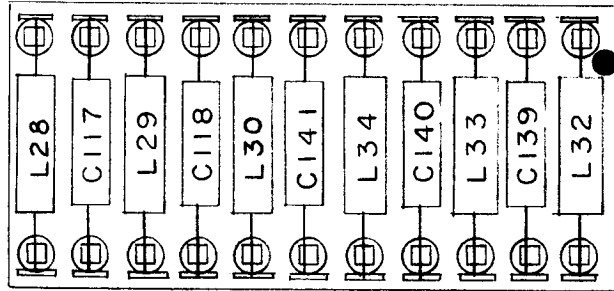
DEC. DIM. ±
 FRAC. DIM. ±
 ANGULAR DIM. ±

SCALE:

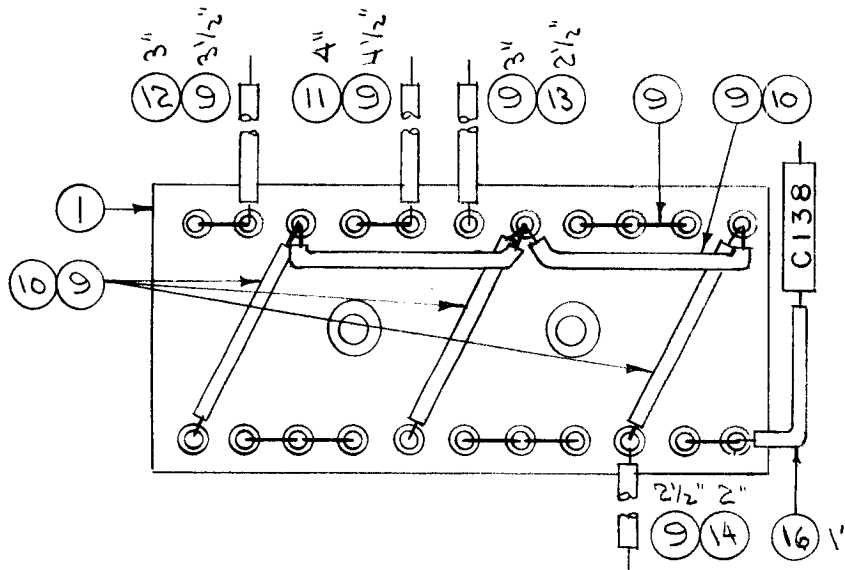
MAXIMUM ALLOWABLE TOLERANCES HAVE BEEN DETERMINED AND ANY DEVIATIONS WILL BE CAUSE FOR REJECTION.
 REMOVE ALL BURRS AND SHARP EDGES

| | | | | |
|--------------|---------|-----------|---------|---|
| RE. PER UNIT | USED ON | | A 1347 | B |
| | MODEL | ASSY. NO. | | |
| 1 | GPR-90 | | 9-10-56 | |

THIS DWG FOR USE ONLY WITH MARK II SERIES & KIT 9-305



YELLOW DOT - AT LEAST 1/8 DIA.



| | | | | |
|--------|----|---------------|-----------------------|----------------------|
| 1" | 16 | PX-104-4-.022 | INSULATION, SLEEVEING | GRN. |
| X | 15 | BS-100 | SOLDER, SOFT | |
| 2" | 14 | PX-104-9-.022 | INSULATION, SLEEVEING | VIO. |
| 2 1/2" | 13 | PX-104-6-.022 | INSULATION, SLEEVEING | BLUE |
| 3" | 12 | PX-104-3-.022 | INSULATION, SLEEVEING | RED |
| 4" | 11 | PX-104-2-.022 | INSULATION, SLEEVEING | YEL. |
| X | 10 | PX-104-1-.022 | INSULATION, SLEEVEING | BLK. |
| X | 9 | WL-100-7 | WIRE, BUSSBAR | |
| 2 | 8 | CHISE 11G | CAPACITOR, FIXED | C138 C141 |
| 2 | 7 | CHISE 560G | CAPACITOR, FIXED | C139 C140 |
| 2 | 6 | CHISE 151G | CAPACITOR, FIXED | C117 C118 |
| 3 | 5 | A-1345 | COIL ASSY | L 32 L 33 L 34 |
| | 4 | DELETED | | |
| 1 | 3 | A-1077 | COIL ASSY | L29 |
| 2 | 2 | A-1076 | COIL ASSY | L30 L28 |
| 1 | 1 | A-1346 | TERMINAL BD. SUB ASSY | |

| | | | | | | | | |
|----------------|------|---------------------|---|---------|--------|---------|-----------|--|
| B | 1 | IT.4 WAS A1344, L35 | 3-23-66 | 15997 | | | | |
| A | 2 | L30 was L28 | 10/29/56 | 1 | 46 | PLK. | AJJ | |
| | 1 | L28 was L30 | | | | | | |
| ISSUE | ITEM | CHANGED FROM | DATE | CH. NO. | DRAFTS | CHECKER | ENG. APP. | |
| TOLERANCES | | | SCALE: | | | | | |
| DEC. DIM. ± | | | MAXIMUM ALLOWABLE TOLERANCES HAVE BEEN DETERMINED AND ANY DEVIATIONS WILL BE CAUSE FOR REJECTION. | | | | | |
| FRAC. DIM. ± | | | REMOVE ALL BURRS AND SHARP EDGES | | | | | |
| ANGULAR DIM. ± | | | | | | | | |

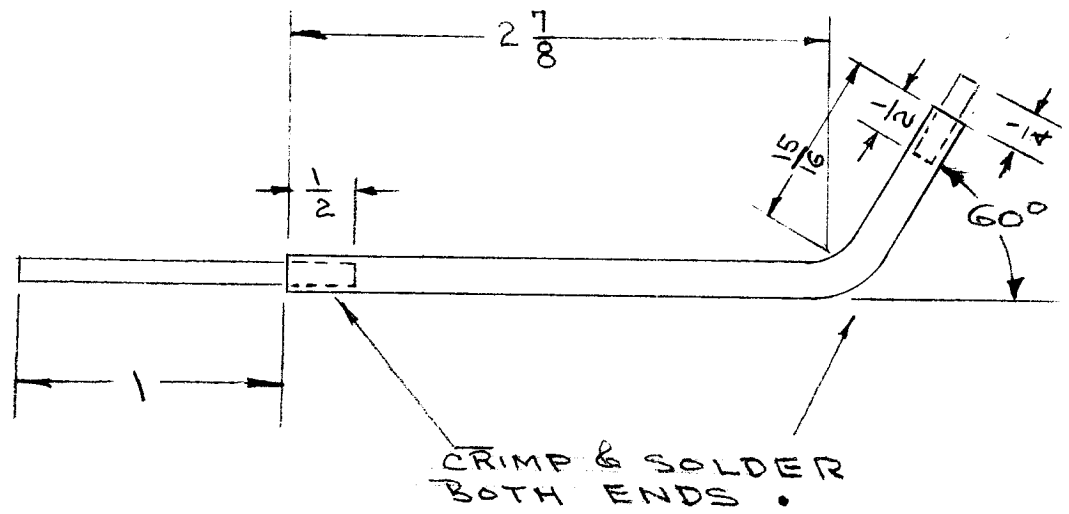
| | | | |
|-------------------------------------|----------|-------------------|-----------------|
| REQ. ITEM | PART NO. | DESCRIPTION | SYMBOL |
| THE TECHNICAL MATERIEL CORP. | | | |
| MAMARONECK. NEW YORK | | | |
| STOCK SIZE | | | |
| TERM. BD. ASSEMBLY, HI PASS | | | |
| FILTER GPR-90 | | | |
| MATERIAL | | | |
| TYPE & TEMPER | | HEAT TREAT. SPEC. | |
| DRAWN | | CHECKED | FINAL APPROVAL |
| FINISH & SPEC. NO. | | ELEC. DES. APP. | MECH. DES. APP. |

IF IT IS FOUND DESIRABLE TO CHANGE ANY TOLERANCE OR OTHER DETAIL SPECIFIED ON THIS DRAWING NOTIFY THE PURCHASER PROMPTLY.

A-1353

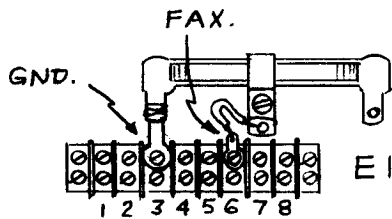
MAXIMUM ALLOWABLE TOLERANCES HAVE BEEN DETERMINED AND DEVIATIONS WILL BE CAUSE FOR REJECTION. REMOVE ALL BURRS AND SHARP EDGES

| REQ PER UNIT | USED ON | | | |
|--------------|---------|-------------|------------|---------|
| | MODEL | PROJECT NO. | ASS'Y. NO. | DATE |
| 1 | TAC-1 | 132 | A-782 | 1-27-64 |

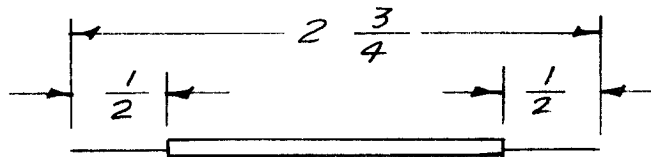
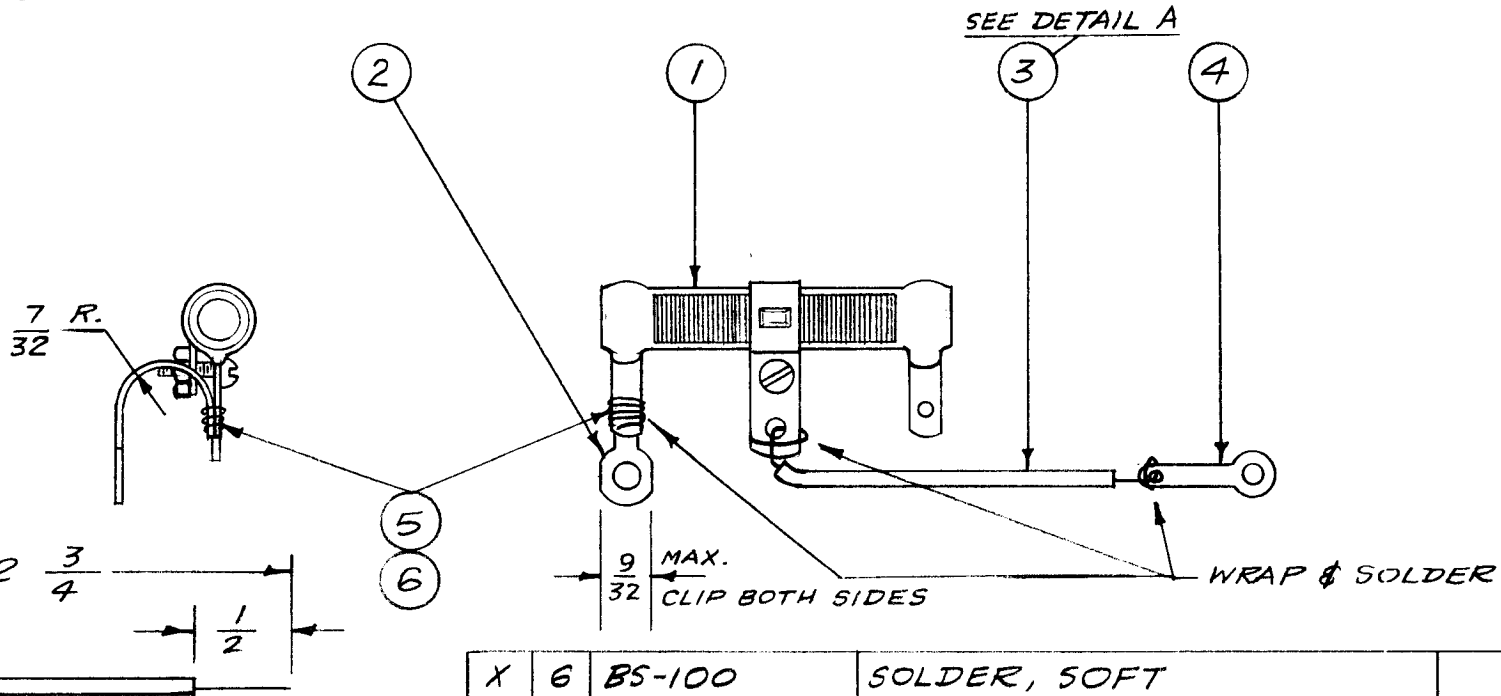


| | | | | |
|--------------------|------|----------|------------------------------|-----------------|
| 2 1/4" | 2 | WL-100-1 | WIRE, BUSS (10 GA) | |
| 1 | 1 | FP-125 | CONNECTOR, INPUT (NO DWG.) | |
| REQ. | ITEM | PART NO. | DESCRIPTION | SYMBOL |
| 3/16 DIA Tubing | | | THE TECHNICAL MATERIEL CORP. | |
| STOCK SIZE | | | MAMARONECK. NEW YORK | |
| COPPER | | | CONNECTOR, INPUT | |
| MATERIAL | | | WEIGHT PER PC. | |
| SOFT DRAWN | | | MODEL TAC-1 | |
| TYPE & TEMPER | | | DRAWN | ELEC. DES. APP. |
| HEAT TREAT. SPEC. | | | MECH. DES. APP. | |
| SILVER PLATE .0003 | | | CHECKED | |
| FINISH & SPEC. NO. | | | FINAL APPROVAL | |
| | | | A-1353 | |

| ISSUE | ITEM | CHANGED FROM | DATE | CN. NO. | DRAFTS | CHECKER | ENG. APP. |
|----------------|------|--------------|------|---|--------|---------|-----------|
| TOLERANCES | | | | SCALE | | | |
| ALL OTHERS | | | | DRILL, PUNCH, COMMERCIAL STOCK SIZES AND MANUFACTURERS TOLERANCES ARE NOT INCLUDED. | | | |
| DEC. DIM. ± | | | | | | | |
| FRAC. DIM. ± | | | | | | | |
| ANGULAR DIM. ± | | | | | | | |



INSTALLATION



DETAIL A

| REQ. PER UNIT | ITEM | PART NO. | DESCRIPTION | SYMBOL |
|---------------|------|---------------|--------------------------------|--------|
| 1 | 6 | BS-100 | SOLDER, SOFT | |
| | 5 | WL-100-7 | WIRE, BUSS | |
| | 4 | TE-113-.149 | TERMINAL | |
| | 3 | MWC22(7)U2 | CABLE, STRANDED | RED. |
| | 2 | TE-116-2 | TERMINAL (As Modified on Dwg.) | |
| | 1 | RA-108-202-10 | RESISTOR, ADJ., W.W. | R83 |

| ISSUE | ITEM | CHANGED FROM | DATE | CH. NO. | DRAFTS | CHECKER | ENG. APP. |
|-------|------|---------------------------------|----------|---------|--------|-------------|-------------|
| △ | 1 | Item ③ Was SRIR-3/5 (7)-22-U-22 | 12-26-61 | 6097 | L.A. | [Signature] | [Signature] |

| TOLERANCES | | SCALE: FULL | |
|----------------|--|--|--|
| DEC. DIM. ± | | MAXIMUM ALLOWABLE TOLERANCES HAVE BEEN DETERMINED AND ANY DEVIATIONS WILL BE CAUSE FOR REJECTION. REMOVE ALL BURRS AND SHARP EDGES | |
| FRAC. DIM. ± | | | |
| ANGULAR DIM. ± | | | |

| REQ. ITEM | PART NO. | DESCRIPTION | SYMBOL |
|--------------------|----------|-------------------|-----------------|
| // | | | |
| STOCK SIZE | | | |
| // | | | |
| MATERIAL | | | |
| TYPE & TEMPER | | HEAT TREAT. SPEC. | |
| FINISH & SPEC. NO. | | ELEC. DES. APP. | MECH. DES. APP. |

THE TECHNICAL MATERIEL CORP.
MAMARONECK. NEW YORK

TERMINATION RESISTOR
ASS'Y. KEYING INPUT

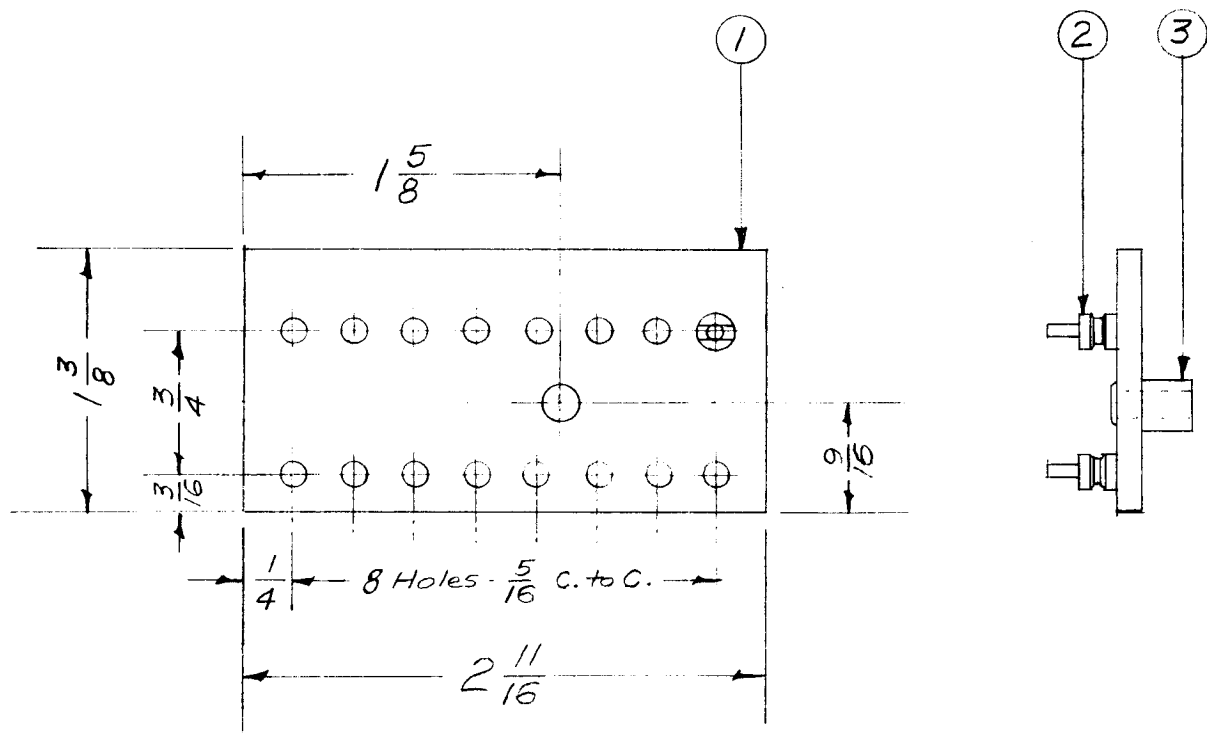
1612-6-56
DRAWN [Signature] CHECKED [Signature] FINAL APPROVAL [Signature]

WOC A-1362 △

| REQ. PER UNIT | USED ON | | |
|---------------|---------|------------|---------|
| | MODEL | ASS'Y. NO. | DATE |
| 1 | XFK | | 12-6-56 |

A-1362 △

| | | | | |
|---------------|---------|------------|--------|--------|
| REQ. PER UNIT | USED ON | | | A-1367 |
| | MODEL | ASS'Y. NO. | DATE | |
| 1 | MSR-1 | A-1391 | 3-5-57 | |



| | | | |
|----|---|----------|-----------------------------|
| 1 | 3 | TE-108-3 | Stand-off, Rivet Type |
| 16 | 2 | TE-109-3 | Terminal, Lug |
| 1 | 1 | PX-351 | Terminal Board No. 3 (N.D.) |

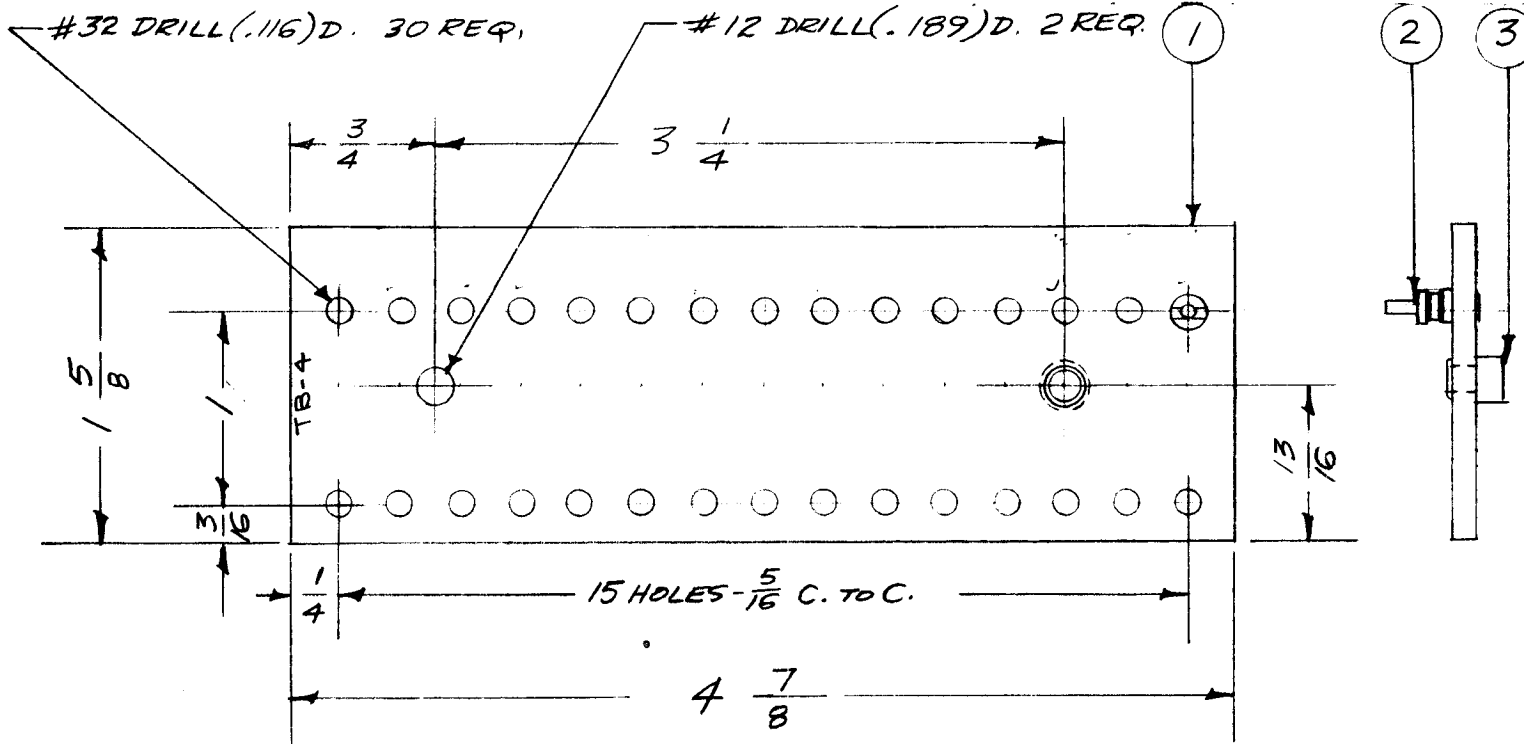
| ISSUE | ITEM | CHANGED FROM | DATE | CH. NO. | DRAFTS | CHECKER | ENG. APP. |
|-------|------|--------------|------|---------|--------|---------|-----------|
| | | | | | | | |
| | | | | | | | |
| | | | | | | | |

| REQ. ITEM | PART NO. | DESCRIPTION | SYMBOL |
|--------------------|----------|--|--------------------------------------|
| 1/8 THK. | | THE TECHNICAL MATERIEL CORP. MAMARONECK, NEW YORK | TERMINAL BOARD NO. 3 SUB-ASSEMBLY |
| STOCK SIZE | | | |
| Phenolic | | | |
| MATERIAL | | MATERIAL | |
| XXXP Laminates | | 63-5-57 | HA De |
| TYPE & TEMPER | | DRAWN | CHECKED |
| Natural | | FINAL APPROVAL | |
| FINISH & SPEC. NO. | | ELEC. DES. APP. | MECH. DES. APP. |
| | | A-1367 | |

| | | |
|----------------|---|--------|
| TOLERANCES | | SCALE: |
| DEC. DIM. ± | MAXIMUM ALLOWABLE TOLERANCES HAVE BEEN DETERMINED AND ANY DEVIATIONS WILL BE CAUSE FOR REJECTION. REM VE ALL BURRS AND SHARP EDGES | |
| FRAC. DIM. ± | | |
| ANGULAR DIM. ± | | |

| REQ. PER UNIT | USED ON | | |
|---------------|---------|------------|----------|
| | MODEL | ASS'Y. NO. | DATE |
| 1 | MSR-1 | 2A-1392 | 12-28-56 |
| 1 | MSE-3 | 2A-1507 | |

A-1368



| | | | | |
|----|---|----------|--------------------------|--|
| 2 | 3 | TE-108-8 | STAND-OFF, RIVET TYPE | |
| 30 | 2 | TE-109-3 | TERMINAL, LUG | |
| 1 | 1 | PX-352 | TERM. BOARD NO. 4 (N.D.) | |

| ISSUE | ITEM | CHANGED FROM | DATE | CH. NO. | DRAFTS | CHECKER | ENG. APP. |
|-------|------|--------------|------|---------|--------|---------|-----------|
| | | | | | | | |
| | | | | | | | |
| | | | | | | | |

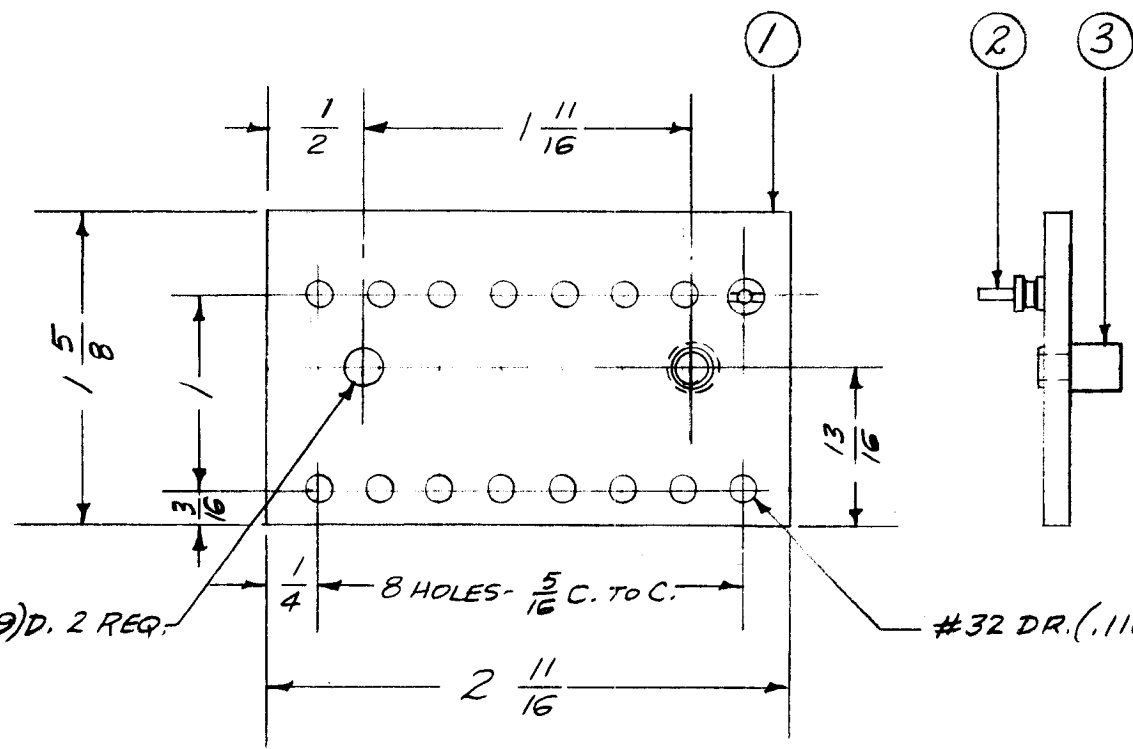
| REQ. ITEM | PART NO. | DESCRIPTION | SYMBOL |
|------------|----------|--|--------|
| 1/8 THK. | | THE TECHNICAL MATERIEL CORP. MAMARONECK, NEW YORK | |
| STOCK SIZE | | | |
| PHENOLIC | | | |
| MATERIAL | | | |
| | | TERMINAL BOARD NO. 4 | |
| | | SUB-ASSEMBLY | |

| TOLERANCES | SCALE: |
|----------------|--|
| DEC. DIM. ± | MAXIMUM ALLOWABLE TOLERANCES HAVE BEEN DETERMINED AND ANY DEVIATIONS WILL BE CAUSE FOR REJECTION. REMOVE ALL BURRS AND SHARP EDGES |
| FRAC. DIM. ± | |
| ANGULAR DIM. ± | |

| | | | | | |
|--------------------|-------------------|-----------------|-----------------|----------------|-----|
| XXXXP | —ff— | 1612-28-56 | JAG | MP | JAR |
| TYPE & TEMPER | HEAT TREAT. SPEC. | DRAWN | CHECKED | FINAL APPROVAL | |
| —ff— | | | | A-1368 | |
| FINISH & SPEC. NO. | | ELEC. DES. APP. | MECH. DES. APP. | | |

| REQ. PER UNIT | USED ON | | |
|---------------|---------|-----------|----------|
| | MODEL | ASSY. NO. | DATE |
| 1 | MSR-1 | A-1377(2) | 12-28-56 |
| 1 | MSR-3 | A-1377 | 6-20-58 |

A-1369



#12 DR. (.189) D. 2 REQ.

#32 DR. (.116) D. 16 REQ.

| | | | |
|----|---|----------|--------------------------|
| 2 | 3 | TE-108-3 | STAND-OFF, RIVET TYPE |
| 16 | 2 | TE-109-3 | TERMINAL LUG |
| 1 | 1 | PX-353 | TERM. BOARD NO. 5 (N.D.) |

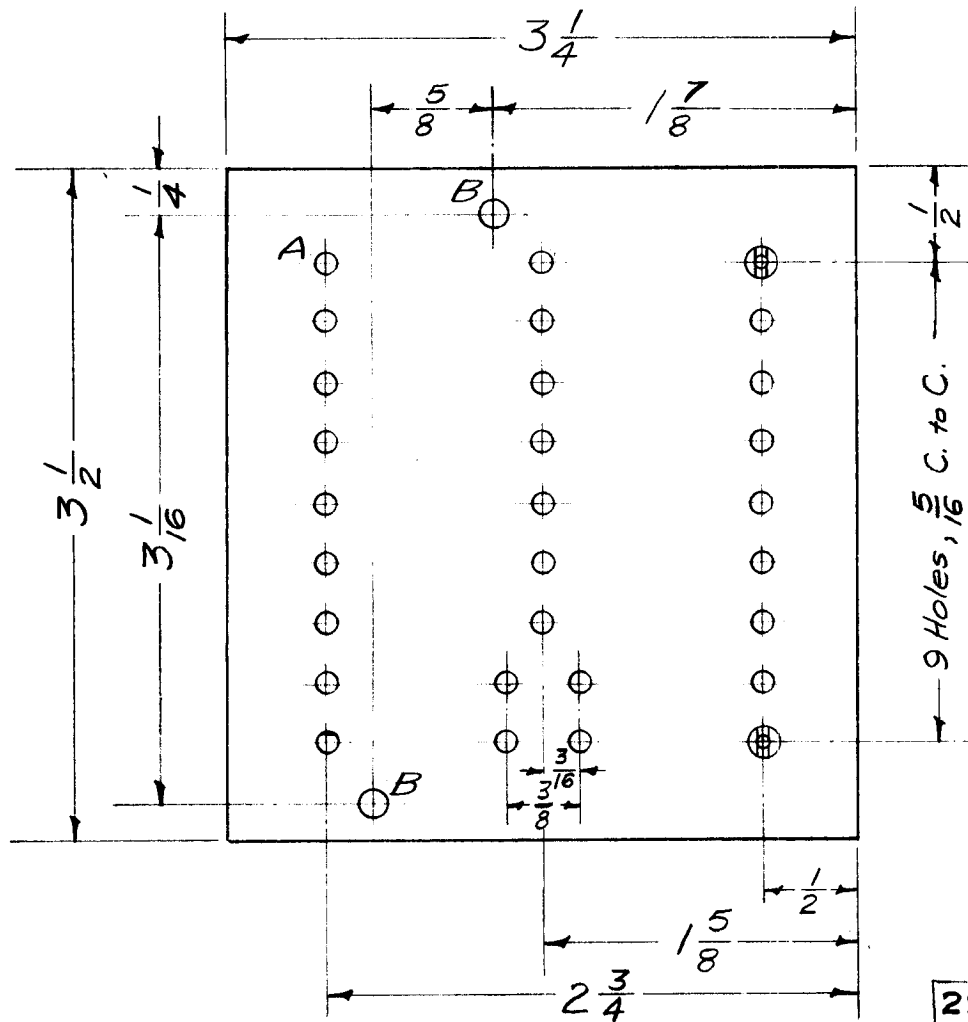
| REQ. ITEM | PART NO. | DESCRIPTION | SYMBOL |
|--------------------|-------------------|--|----------------------|
| 1/8 THK. | | THE TECHNICAL MATERIEL CORP. MAMARONECK, NEW YORK | |
| STOCK SIZE | | | |
| PHENOLIC | | | TERMINAL BOARD NO. 5 |
| MATERIAL | | MECH. ASSY. | |
| XXX P | ff | 1612-28-56 | ff |
| TYPE & TEMPER | HEAT TREAT. SPEC. | DRAWN | CHECKED |
| FINISH & SPEC. NO. | | ELEC. DES. APP. | MECH. DES. APP. |

| ISSUE | ITEM | CHANGED FROM | DATE | CH. NO. | DRAFTS | CHECKER | ENG. APP. |
|-------|------|--------------|------|---------|--------|---------|-----------|
| | | | | | | | |

| TOLERANCES | | SCALE: |
|----------------|--|--|
| DEC. DIM. ± | | MAXIMUM ALLOWABLE TOLERANCES HAVE BEEN DETERMINED AND ANY DEVIATIONS WILL BE CAUSE FOR REJECTION. REMOVE ALL BURRS AND SHARP EDGES |
| FRAC. DIM. ± | | |
| ANGULAR DIM. ± | | |

A-1369

| | | | | |
|---------------|---------|------------|---------|--------|
| REQ. PER UNIT | USED ON | | | A-1371 |
| | MODEL | ASS'Y. NO. | DATE | |
| 1 | TTU | 2A-1395 | 1-21-57 | |



A - #32 Drill (.116) 29 Req.
 B - #27 Drill (.144) 2 Req.

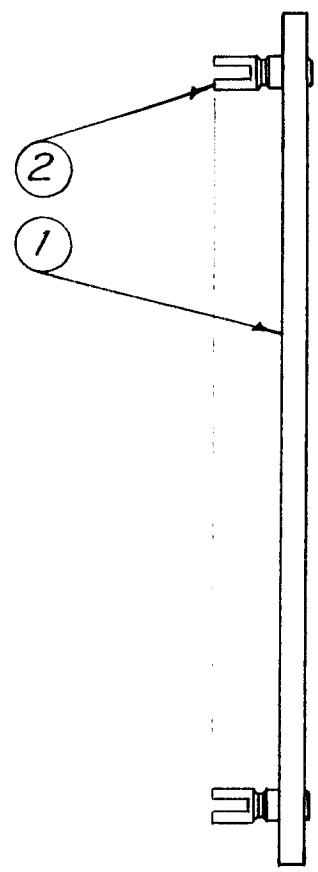
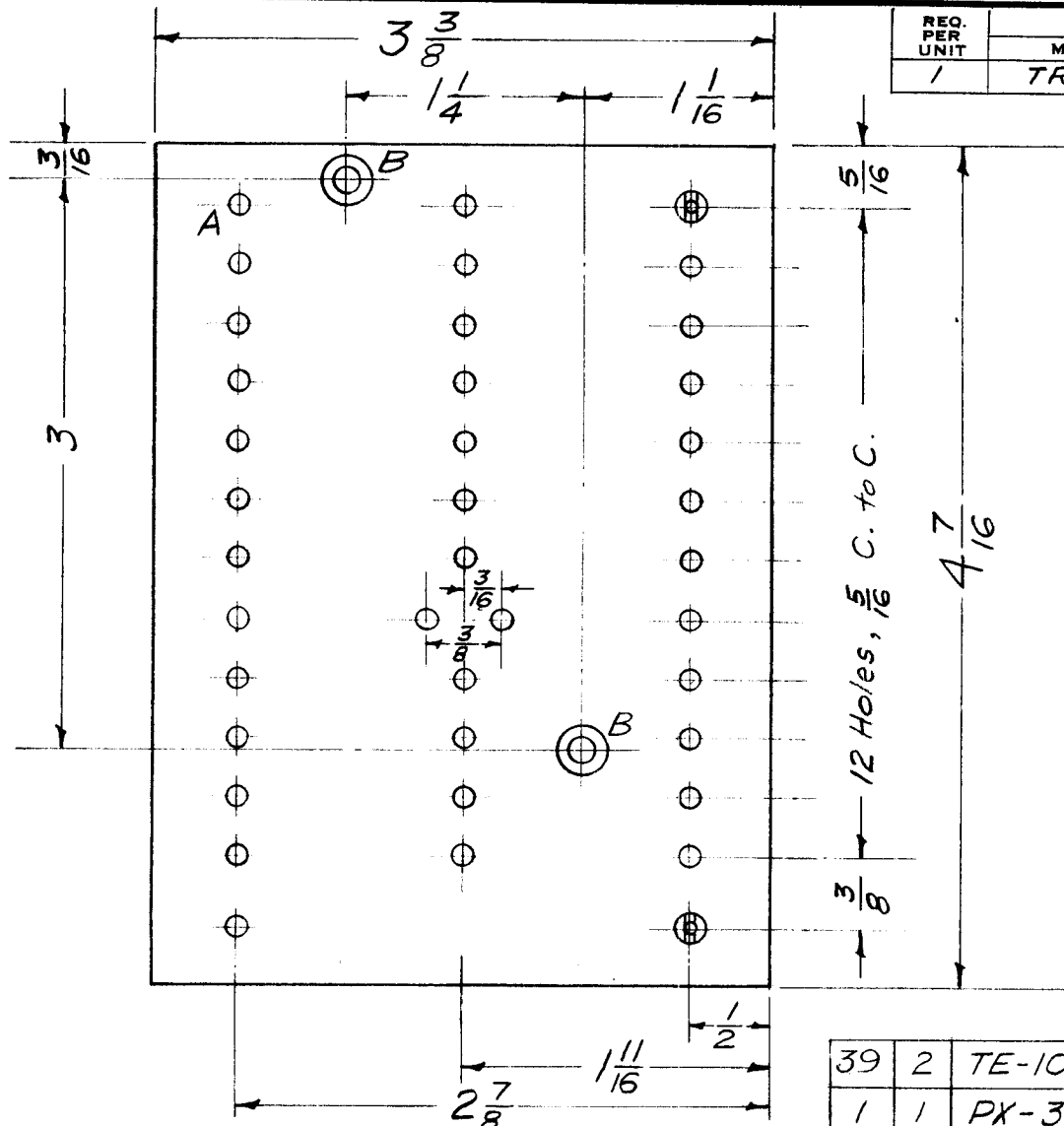
REF.: LD-323 (1 size)

| | | | | |
|--------------------|-------------------|-----------------|------------------------------|----------------|
| 29 | 2 | TE-109-3 | Terminal Lug, Split | |
| 1 | 1 | PX-354 | Terminal Board (No Dwg.) | |
| REQ. ITEM | PART NO. | | DESCRIPTION | SYMBOL |
| 1/8 THK. | | | THE TECHNICAL MATERIEL CORP. | |
| STOCK SIZE | | | MAMARONECK. NEW YORK | |
| Phenolic | | | TTU TERMINAL BOARD | |
| MATERIAL | | | SUB-ASS'Y. (TB201) | |
| XXXXP | --- | 161-21-57 | FAID | OK |
| TYPE & TEMPER | HEAT TREAT. SPEC. | DRAWN | CHECKED | FINAL APPROVAL |
| Natural | | | OK | A-1371 |
| FINISH & SPEC. NO. | | ELEC. DES. APP. | MECH. DES. APP. | |

| | | | | | | | |
|-------|------|--------------|------|---------|--------|---------|-----------|
| ISSUE | ITEM | CHANGED FROM | DATE | CH. NO. | DRAFTS | CHECKER | ENG. APP. |
| | | | | | | | |

| | | |
|-------------------|--|---|
| TOLERANCES | | SCALE: |
| DEC. DIM. ± | | MAXIMUM ALLOWABLE TOLERANCES HAVE BEEN DETERMINED AND ANY DEVIATIONS WILL BE CAUSE FOR REJECTION. |
| FRAC. DIM. ± 1/64 | | REM VE ALL BURRS AND SHARP EDGES |
| ANGULAR DIM. ± | | |

| | | | | | |
|---------------|---------|------------|---------|--------|---|
| REQ. PER UNIT | USED ON | | | A-1372 | A |
| | MODEL | ASS'Y. NO. | DATE | | |
| 1 | TRU | 2 A-1394 | 1-21-57 | | |



A - #32 Drill (.116)
39 Req.

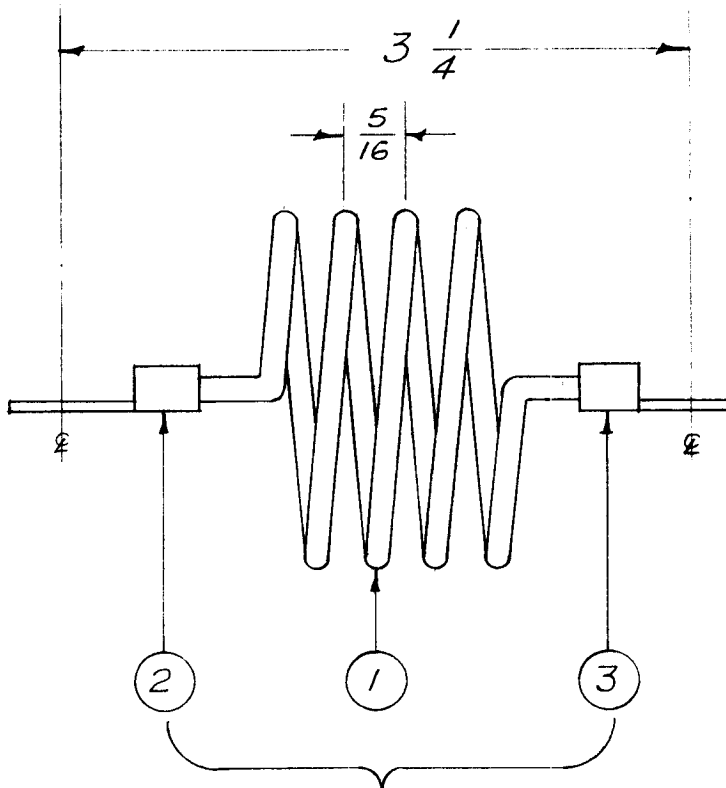
B - Drill & C'sink.
for 6-32 Flat Hd.
Screw.

Ref: LD-322 (1 size)

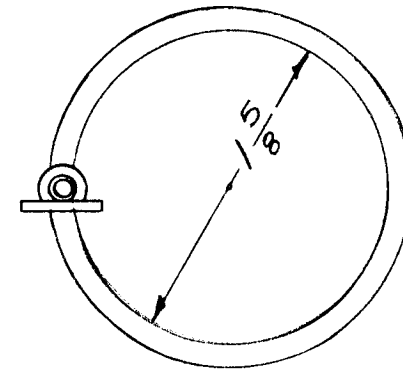
| | | | | |
|--------------------|-------------------|-----------------|------------------------------|----------------|
| 39 | 2 | TE-109-3 | Terminal Lug, Split | |
| 1 | 1 | PX-355 | Terminal Board (No Dwg.) | |
| REQ. | ITEM | PART NO. | DESCRIPTION | SYMBOL |
| 1/8 Thk. | | | THE TECHNICAL MATERIEL CORP. | |
| STOCK SIZE | | | MAMARONECK, NEW YORK | |
| Phenolic | | | TRU TERMINAL BOARD | |
| MATERIAL | | | SUB - ASS'Y. (TB-501) | |
| XXXXP | --- | 6-21-57 | JAD | 1/1/57 |
| TYPE & TEMPER | HEAT TREAT. SPEC. | DRAWN | CHECKED | FINAL APPROVAL |
| --- | --- | | | |
| FINISH & SPEC. NO. | | ELEC. DES. APP. | MECH. DES. APP. | A-1372 A |

| | | | | | | | |
|-------------------|------|----------------------|---|---------|--------|---------|-----------|
| A | 1 | ONE "A" HOLE DELETED | 3/5/57 | 1 | JAD | JAD | AM |
| ISSUE | ITEM | CHANGED FROM | DATE | CH. NO. | DRAFTS | CHECKER | ENG. APP. |
| TOLERANCES | | | SCALE: | | | | |
| DEC. DIM. ± | | | MAXIMUM ALLOWABLE TOLERANCES HAVE BEEN DETERMINED AND ANY DEVIATIONS WILL BE CAUSE FOR REJECTION. | | | | |
| FRAC. DIM. ± 1/64 | | | REMOVE ALL BURRS AND SHARP EDGES | | | | |
| ANGULAR DIM. ± | | | | | | | |

| | | | | |
|---------------|----------|------------|---------|----------|
| REQ. PER UNIT | USED ON | | | A-1373 A |
| | MODEL | ASS'Y. NO. | DATE | |
| 2 | TER-3500 | A-1378 | 1-16-57 | |



4 TURNS
 $L = .8 \mu\text{hy.}$



FINISH NOTE - .0003 SILVER PLATE (S245) & CLEAR IRIDITE (S423) AFTER ASSEMBLY.

CRIMP & SOLDER TO ITEM 1 WITH ITEM 4

| | | | | |
|--------------------|--------------------|-------------------|------------------------------|----------|
| X | 4 | BS-100 | SOLDER, SOFT | |
| 1 | 3 | TE-141-3 | TERMINAL | |
| 1 | 2 | TE-141-4 | TERMINAL | |
| 1 | 1 | CL-123 | COIL, RF. (N.D.) | |
| REQ. ITEM | PART NO. | | DESCRIPTION | SYMBOL |
| | 1/8 D. X .030 THK. | | THE TECHNICAL MATERIEL CORP. | |
| | STOCK SIZE | | MAMARONECK. NEW YORK | |
| | SOFT COPPER TUBING | | COIL, R.F. | |
| | MATERIAL | | .8 microherries | |
| | —H— | —H— | 16-1-16-57 | A. J. J. |
| TYPE & TEMPER | | HEAT TREAT. SPEC. | DRAWN | CHECKED |
| SEE NOTE | | | AKB | NO |
| FINISH & SPEC. NO. | | ELEC. DES. APP. | MECH. DES. APP. | A-1373 A |

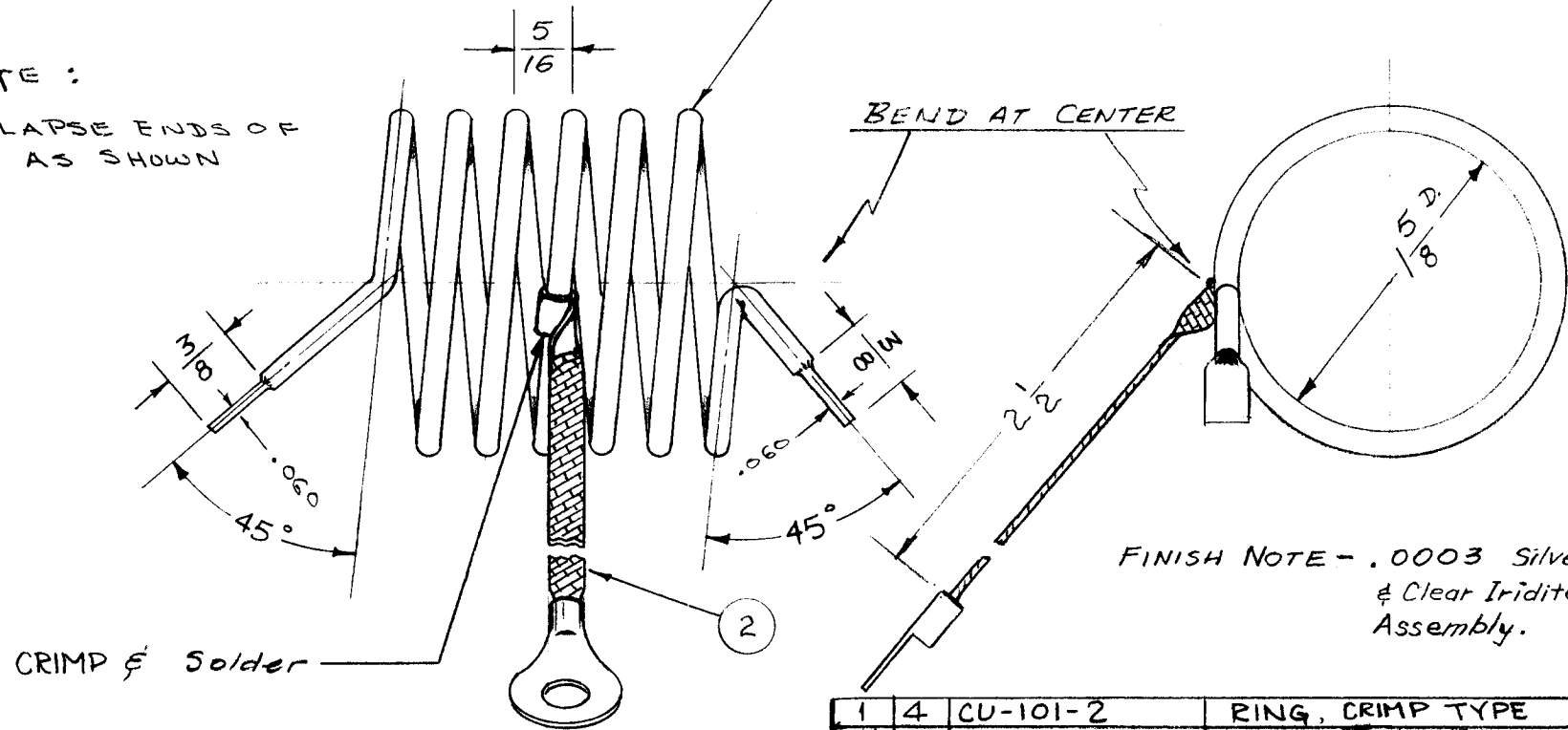
| | | | | | | | |
|----------------|------|---|---------|---------|--------|---------|-----------|
| A | 1 | ADDED * & CLEAR IRIDITE (S423) TO FINISH NOTE | 4-17-63 | 8796 | RE | AKB | AKB |
| ISSUE | ITEM | CHANGED FROM | DATE | CH. NO. | DRAFTS | CHECKER | ENG. APP. |
| TOLERANCES | | | SCALE: | | | | |
| DEC. DIM. ± | | MAXIMUM ALLOWABLE TOLERANCES HAVE BEEN DETERMINED AND ANY DEVIATIONS WILL BE CAUSE FOR REJECTION. | | | | | |
| FRAC. DIM. ± | | REMOVE ALL BURRS AND SHARP EDGES | | | | | |
| ANGULAR DIM. ± | | | | | | | |

ITEM(4), CU-101-2,
FORMED ON ASS'Y WITH
ITEM(2), A-1196

| | | | | | |
|---------------|----------|------------|---------|--------|---|
| REQ. PER UNIT | USED ON | | | A-1376 | C |
| | MODEL | ASS'Y. NO. | DATE | | |
| 1 | TER-3500 | A-1145 | 1-16-57 | | |

6 TURNS
L = 1.25 μ hy

NOTE :
COLLAPSE ENDS OF
COIL AS SHOWN



FINISH NOTE - .0003 Silver Plate (S-245)
& Clear Iridite (S423) After
Assembly.

| | | | | |
|-----------|----------|----------|---------------------|--------|
| 1 | 4 | CU-101-2 | RING, CRIMP TYPE | |
| X | 3 | B5-100 | SOLDER, SOFT | |
| 1 | 2 | A-1196 | GROUND STRAP ASS'Y. | |
| 1 | 1 | CL-124 | COIL, RF. | N.D. |
| REQ. ITEM | PART NO. | | DESCRIPTION | SYMBOL |

| | | | | | | | |
|--------------------|------|--|---|---------|--------------------|--------------------|--------------------|
| C | 1 | ON FINISH NOTE, "CLEAR IRIDITE (S423)" ADDED | 4-17-63 | 8791 | <i>[Signature]</i> | <i>[Signature]</i> | <i>[Signature]</i> |
| B | 2 | ITEM(4) ADDED | 10-23-62 | 7440 | <i>[Signature]</i> | <i>[Signature]</i> | <i>[Signature]</i> |
| | 1 | DETAIL "A-A" DELETED | | | | | |
| A | 1 | DETAIL "A-A", ADDED | 7-24-62 | 7219 | <i>[Signature]</i> | <i>[Signature]</i> | <i>[Signature]</i> |
| ISSUE | ITEM | CHANGED FROM | DATE | CH. NO. | DRAFTS | CHECKER | ENG. APP. |
| TOLERANCES | | | SCALE: | | | | |
| DEC. DIM. \pm | | | MAXIMUM ALLOWABLE TOLERANCES HAVE BEEN DETERMINED AND ANY DEVIATIONS WILL BE CAUSE FOR REJECTION. | | | | |
| FRAC. DIM. \pm | | | REMOVE ALL BURRS AND SHARP EDGES | | | | |
| ANGULAR DIM. \pm | | | | | | | |

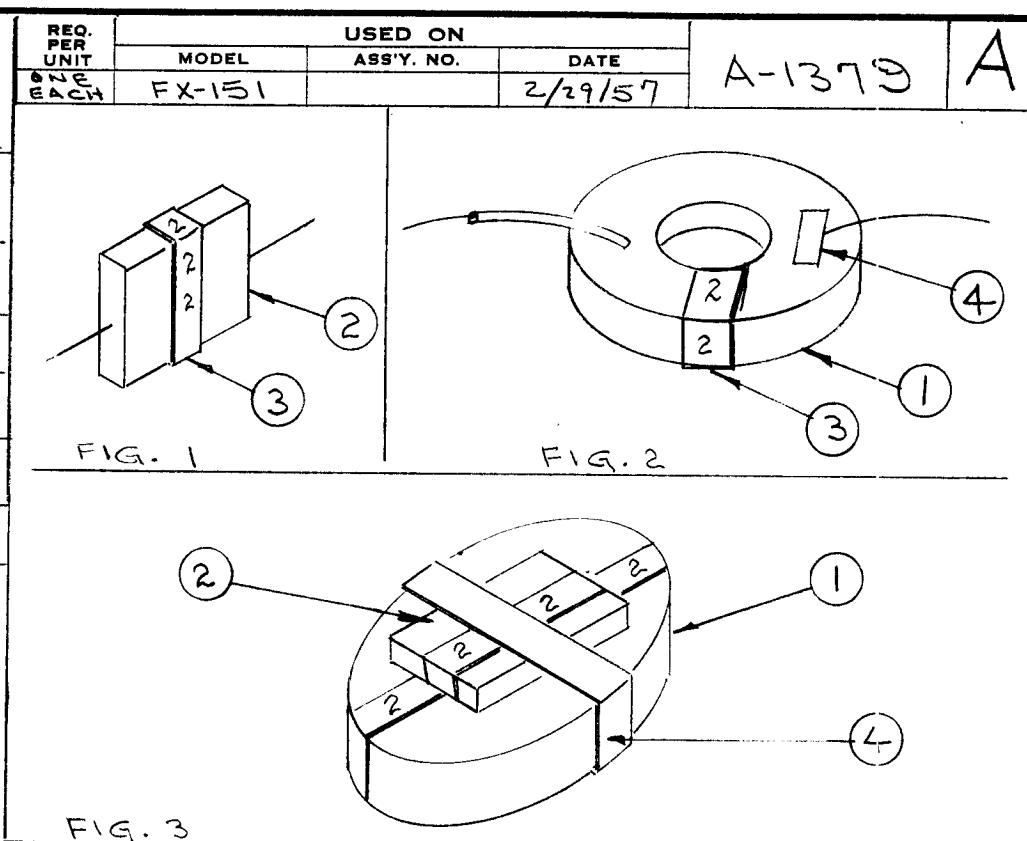
| | | | | | |
|--------------------|--|--|--|--------------------|--|
| 1/8 D. X .030 THK. | | THE TECHNICAL MATERIEL CORP. MAMARONECK. NEW YORK | | | |
| STOCK SIZE | | COIL, RF ASS'Y. | | | |
| SOFT COPPER TUBING | | 1.25 Microhenries | | | |
| MATERIAL | | 16-16-57 | | <i>[Signature]</i> | |
| TYPE & TEMPER | | HEAT TREAT. SPEC. | | DRAWN | |
| SEE NOTE | | | | <i>[Signature]</i> | |
| FINISH & SPEC. NO. | | ELEC. DES. APP. | | MECH. DES. APP. | |
| | | | | A-1376 C | |

| TMC PART NO. | MARKER NOS. ITEM 3 | TOROIDAL (ITEM 1) | CAPACITOR (ITEM 2) | RESONANCE | TOLERANCE |
|--------------|--------------------|-------------------|--------------------|-----------|-----------|
| A-1379-1 | 1 | CL-126-1 | CM30E512G | 18.8 Kcs. | ± 30 cps |
| A-1379-2 | 2 | CL-126-2 | CM30D222G | 16.8 Kcs. | ± 30 cps |
| A-1379-3 | 3 | CL-126-3 | CM30E512G | 18.5 Kcs. | ± 30 cps |
| A-1379-4 | 4 | CL-126-4 | CM30D222G | 20.3 Kcs. | ± 30 cps |
| A-1379-5 | 5 | CL-126-5 | CM30D272G | 19.23Kcs | ± 30 cps |
| A-1379-6 | 6 | CL-126-6 * | A-1379-2 * | 17.84Kcs | ± 30 CPS |

ASSEMBLY PROCEDURE

1. Obtain resonance in accordance with TMC specification S-206.
2. Place markers (item 3) on coil and capacitor as shown. (See chart). Fig. 1, Fig. 2
3. Tape the toroid and capacitor securely together. Fig. 3.

* Tape CL-126-6 & A-1379-2 Together for A-1379-6 After Resonating. This sub-assembly must not be separated until the final assembly of FX-151.



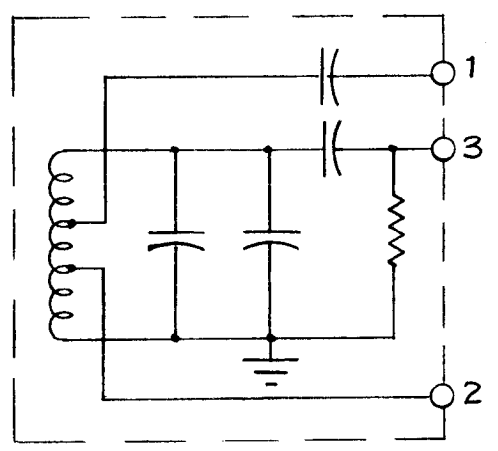
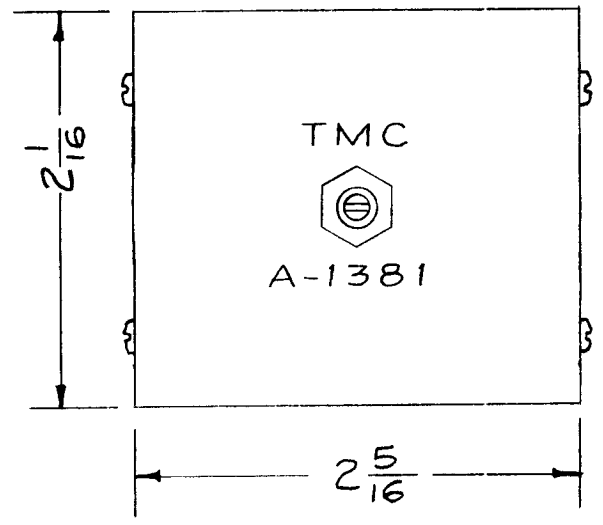
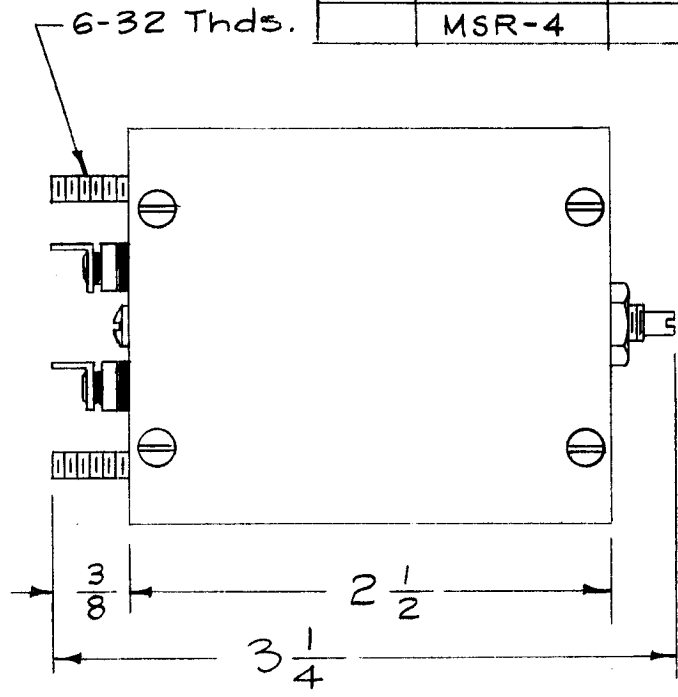
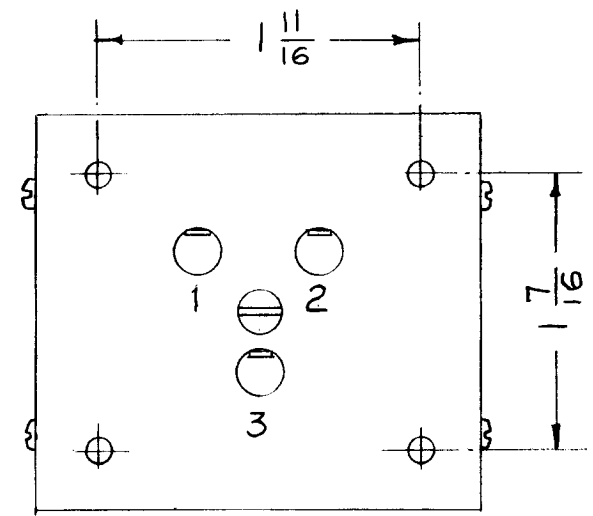
| REQ. ITEM | ITEM | PART NO. | DESCRIPTION | SYMBOL |
|-----------|------|-----------|-------------------------|--------|
| X | 4 | TA-102-2 | Tape, Paper | |
| X | 3 | LA-101 | Wire, Marker (1 thru 6) | |
| 1 | 2 | See chart | Capacitor | |
| 1 | 1 | See chart | Reactor, Toroidal | |

| | | | |
|--------------------|-------------------|--|-----------------|
| STOCK SIZE | | THE TECHNICAL MATERIEL CORP. MAMARONECK. NEW YORK | |
| MATERIAL | | Sub-Assembly, Capacitor & Coil FX-151 | |
| TYPE & TEMPER | HEAT TREAT. SPEC. | DRAWN | CHECKED |
| FINISH & SPEC. NO. | | ELEC. DES. APP. | MECH. DES. APP. |

| | | | | | | | |
|----------------|---|--|---------|---------|-------------|---------|-----------|
| A | 1 | A-1379-5 was 19.6 Kcs & item 2 was CM35E502G | 4/18/57 | 1 | JAN V. PATT | CHECKER | ENG. APP. |
| ISSUE ITEM | | CHANGED FROM | DATE | CH. NO. | DRAFTS | CHECKER | ENG. APP. |
| TOLERANCES | | SCALE: | | | | | |
| DEC. DIM. ± | | MAXIMUM ALLOWABLE TOLERANCES HAVE BEEN DETERMINED AND ANY DEVIATIONS WILL BE CAUSE FOR REJECTION. REMOVE ALL BURRS AND SHARP EDGES | | | | | |
| FRAC. DIM. ± | | | | | | | |
| ANGULAR DIM. ± | | | | | | | |

| REQ. PER UNIT | USED ON | | |
|---------------|---------|--------|---------|
| | MODEL | SYMBOL | DATE |
| 1 | MSR-1 | Z4 | 1-3-58 |
| | MSR-4 | | 4-27-59 |

A-1381



SCHMATIC

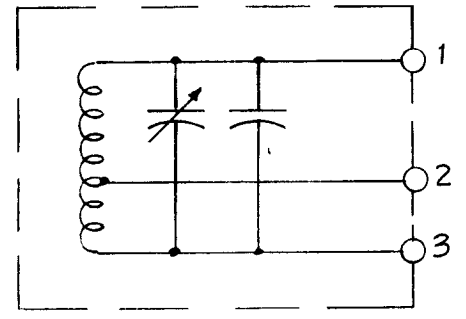
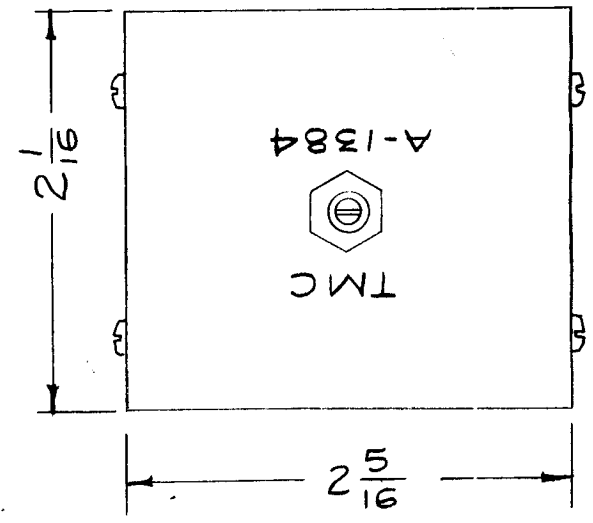
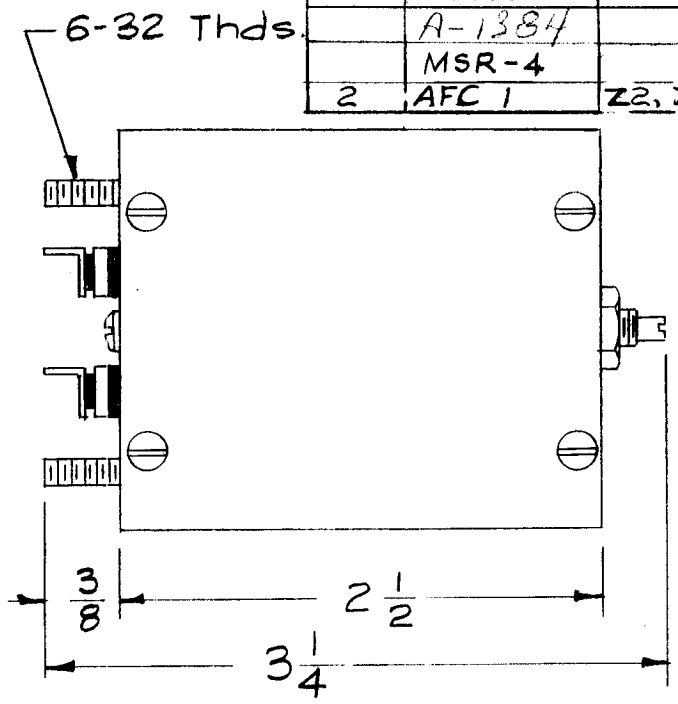
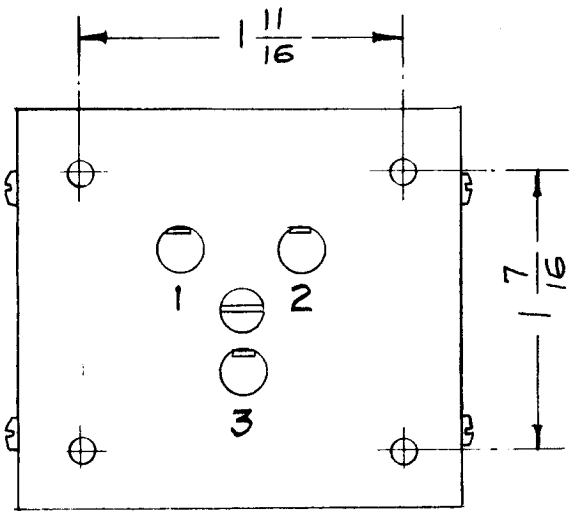
CASE - Steel, Hot Tinned
FINISH - Smooth Grey Enamel

Dimensions for Ref. Only.

| REQ. | ITEM | PART NO. | DESCRIPTION | SYMBOL | | | | | | | | | |
|---|------|--------------|---|---------|--------|---------|--------------------|-------------------|--------------------|--------------------|--------------------|--|--|
| | | | THE TECHNICAL MATERIEL CORP. MAMARONECK, NEW YORK | | | | | | | | | | |
| | | | 17 KC OSCILLATOR NETWORK | | | | | | | | | | |
| ISSUE | ITEM | CHANGED FROM | DATE | CH. NO. | DRAFTS | CHECKER | ENG. APP. | MATERIAL | | | | | |
| | | TOLERANCES | SCALE: FULL | | | 2A-1493 | | | 15 1/3/58 | <i>[Signature]</i> | <i>[Signature]</i> | | |
| DEC. DIM. ± FRAC. DIM. ± ANGULAR DIM. ± | | | MAXIMUM ALLOWABLE TOLERANCES HAVE BEEN DETERMINED AND ANY DEVIATIONS WILL BE CAUSE FOR REJECTION. REMOVE ALL BURRS AND SHARP EDGES | | | | TYPE & TEMPER | HEAT TREAT. SPEC. | DRAWN | CHECKED | FINAL APPROVAL | | |
| | | | | | | | | | <i>[Signature]</i> | | A-1381 | | |
| | | | | | | | FINISH & SPEC. NO. | | ELEC. DES. APP. | MECH. DES. APP. | | | |

| REQ. PER UNIT | USED ON | | |
|---------------|---------|------------|---------|
| | MODEL | ASS'Y. NO. | DATE |
| 1 | MSR-1 | Z5 | 1-3-58 |
| | A-1384 | | 5-1-58 |
| | MSR-4 | | 4-27-59 |
| 2 | AFC 1 | Z2, Z3 | 8-15-60 |

A-1384



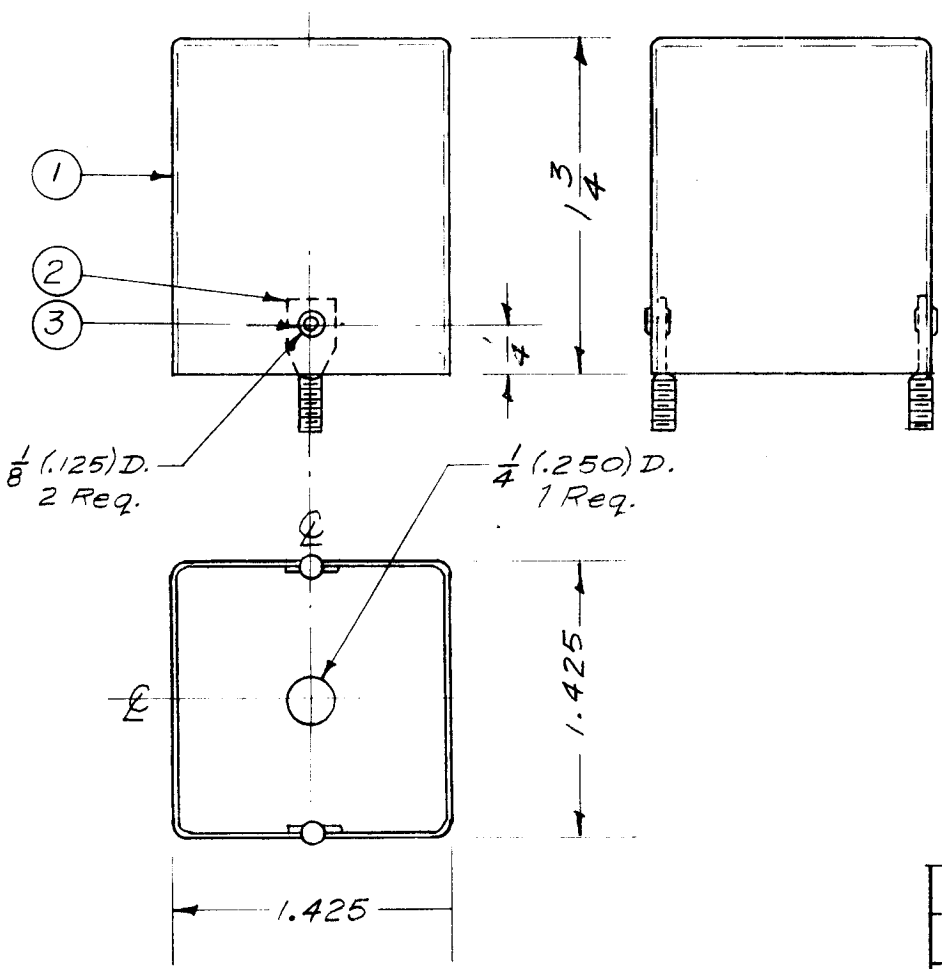
SCHEMATIC

CASE - Steel, Hot Tinned
FINISH - Smooth Grey Enamel

Dimensions for Ref. Only

| ISSUE | ITEM | CHANGED FROM | DATE | CH. NO. | DRAFTS | CHECKER | ENG. APP. | REQ. ITEM | PART NO. | DESCRIPTION | SYMBOL | |
|----------------|------|--------------|---|---------|---------|---------|-----------|--------------------|-------------------|--|-----------------|----------------|
| | | | | | | | | | | THE TECHNICAL MATERIEL CORP. MAMARONECK, NEW YORK SIDETONE GENERATOR NETWORK | | |
| | | | | | | | | | STOCK SIZE | | | |
| | | | | | | | | | MATERIAL | | | |
| | | | | | | | | | | | | |
| TOLERANCES | | | SCALE: FULL | | 2A-1494 | | | | | 16 1/3 / 58 | ATT | |
| DEC. DIM. ± | | | MAXIMUM ALLOWABLE TOLERANCES HAVE BEEN DETERMINED AND ANY DEVIATIONS WILL BE CAUSE FOR REJECTION. REMOVE ALL BURRS AND SHARP EDGES | | | | | | | | | |
| FRAC. DIM. ± | | | | | | | | | | | | |
| ANGULAR DIM. ± | | | | | | | | | | | | |
| | | | | | | | | TYPE & TEMPER | HEAT TREAT. SPEC. | DRAWN | CHECKED | FINAL APPROVAL |
| | | | | | | | | | | P.L.K. | | A-1384 |
| | | | | | | | | FINISH & SPEC. NO. | | ELEC. DES. APP. | MECH. DES. APP. | |

| | | | | |
|--------------|---------|-----------|--------|--------|
| RE. PER UNIT | USED ON | | | A-1385 |
| | MODEL | ASS'Y. N. | DATE | |
| 1 | MSR | A-1387 | 3-1-57 | |

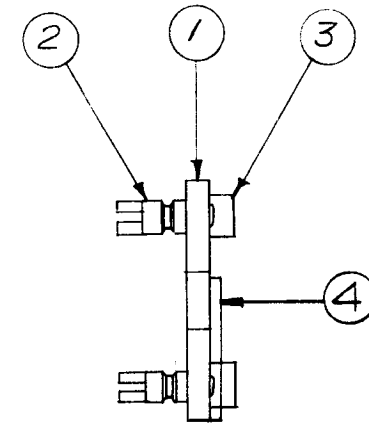
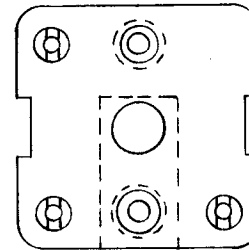
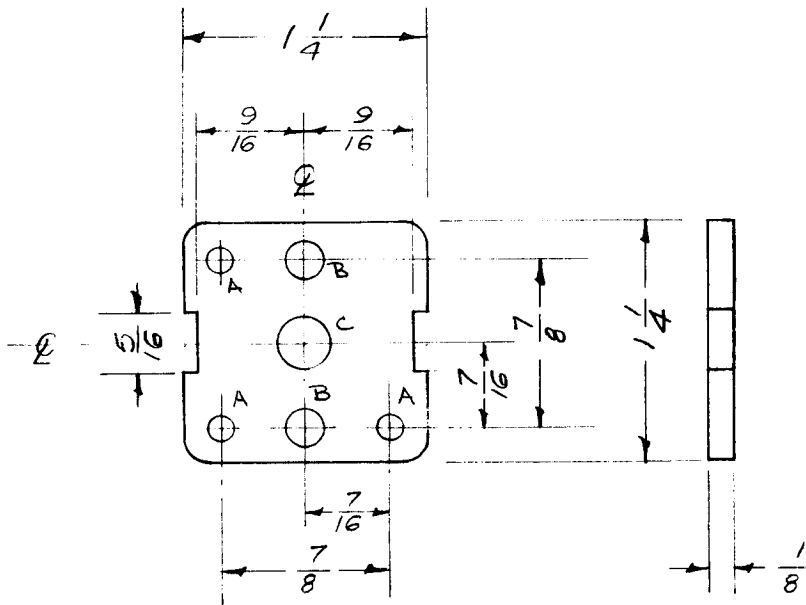


| | | | |
|---|---|----------|----------------------------|
| 2 | 3 | EY-100-1 | Eyelet |
| 2 | 2 | SC-106-1 | Bolt, Spade, Straight Type |
| 1 | 1 | FP-108-7 | Can, Modified as Shown |

| | | | | | | | |
|----------------|------|--------------|---|---------|--------|---------|-----------|
| ISSUE | ITEM | CHANGED FROM | DATE | CH. NO. | DRAFTS | CHECKER | ENG. APP. |
| TOLERANCES | | | SCALE: | | | | |
| DEC. DIM. ± | | | MAXIMUM ALLOWABLE TOLERANCES HAVE BEEN DETERMINED AND ANY DEVIATIONS WILL BE CAUSE FOR REJECTION. | | | | |
| FRAC. DIM. ± | | | REMOVE ALL BURRS AND SHARP EDGES | | | | |
| ANGULAR DIM. ± | | | | | | | |

| | | | | |
|------|------|--------------------|--|-----------------|
| REQ. | ITEM | PART NO. | DESCRIPTION | SYMBOL |
| | | STOCK SIZE | THE TECHNICAL MATERIEL CORP. MAMARONECK, NEW YORK | |
| | | MATERIAL | CAN ASSEMBLY | |
| | | DATE | DRAWN | CHECKED |
| | | TYPE & TEMPER | HEAT TREAT. SPEC. | FINAL APPROVAL |
| | | FINISH & SPEC. NO. | ELEC. DES. APP. | MECH. DES. APP. |

| | | | | |
|---------------|---------|------------|--------|----------|
| REQ. PER UNIT | USED ON | | | A-1386 A |
| | MODEL | ASS'Y. NO. | DATE | |
| 1 | MSR | A-1387 | 3-1-57 | |



A = #32 (.116) Dia 3 Holes
 B = #12 (.189) Dia 2 "
 C = #6 (.261) Dia 1 "

| REQ. ITEM | ITEM | PART NO. | DESCRIPTION | SYMBOL |
|------------------------|------|-------------------|--|-------------|
| 1 | 4 | MS-132 | GROUNDING STRAP | |
| 2 | 3 | TE-108-8 | Standoff, Rivet Type | |
| 3 | 2 | TE-109-3 | Lug, Terminal | |
| 1 | 1 | PX-358 | Terminal Board (No Dwg.) | |
| 1/8 THK. STOCK SIZE | | | THE TECHNICAL MATERIEL CORP. MAMARONECK. NEW YORK | |
| Phenolic MATERIAL | | | TERMINAL BOARD ASS'Y., Z3 | |
| XXXP LAMINATE | | —#— | 463-1-57 | J.M.C. D.A. |
| TYPE & TEMPER | | HEAT TREAT. SPEC. | DRAWN | CHECKED |
| Natural | | | P.L.K. | |
| FINISH & SPEC. NO. | | ELEC. DES. APP. | MECH. DES. APP. | |
| | | | | A-1386 A |

| ISSUE | ITEM | CHANGED FROM | DATE | CH. NO. | DRAFTS | CHECKER | ENG. APP. |
|----------------|------|--------------|---|---------|--------|---------|-----------|
| A | 1 | MS-132 ADDED | 10-9-61 | 5679 | GG | atb | JMM |
| TOLERANCES | | | SCALE: | | | | |
| DEC. DIM. ± | | | MAXIMUM ALLOWABLE TOLERANCES HAVE BEEN DETERMINED AND ANY DEVIATIONS WILL BE CAUSE FOR REJECTION. | | | | |
| FRAC. DIM. ± | | | REMOVE ALL BURRS AND SHARP EDGES | | | | |
| ANGULAR DIM. ± | | | | | | | |

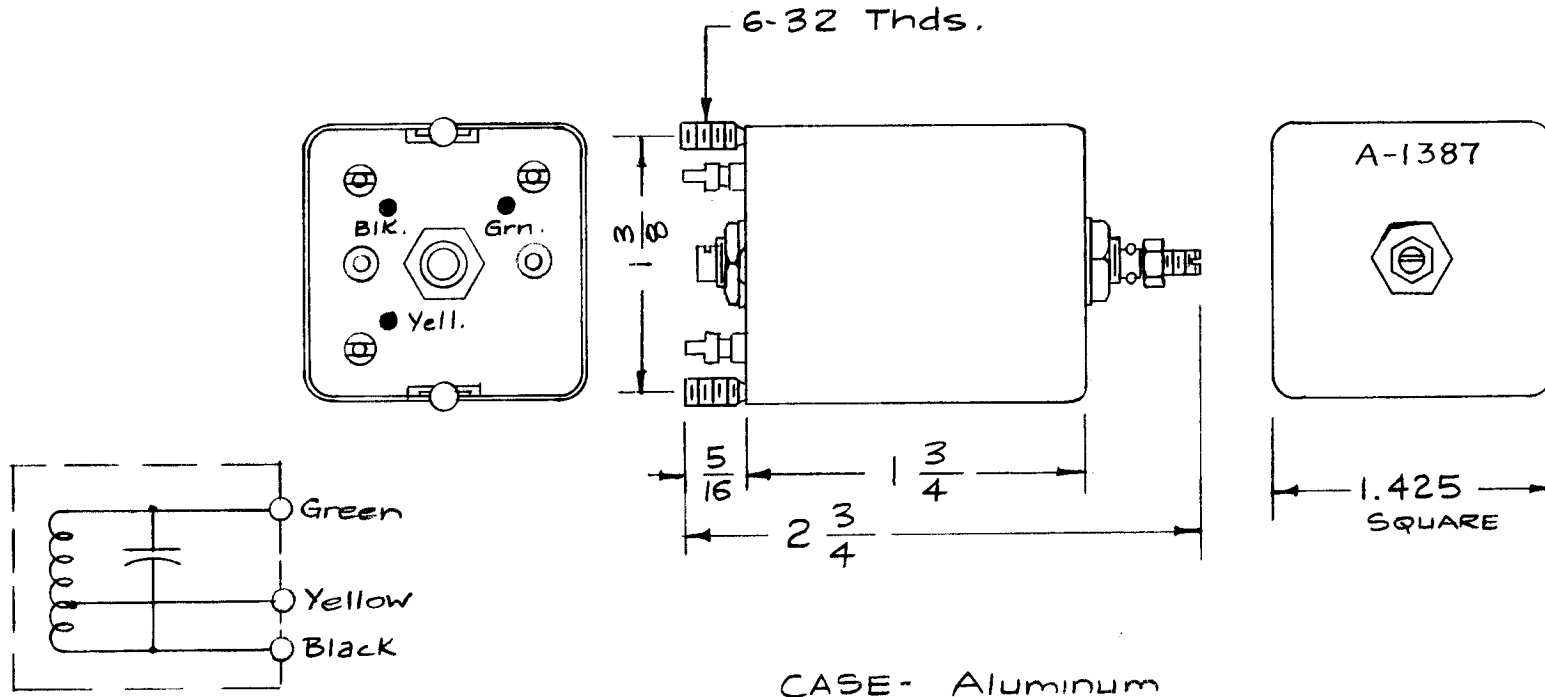
ELECTRICAL SPEC.

INDUCTANCE: 225 μ h, Q=75,
TAP AT 115, R=50.

CAPACITANCE: 4300uf, \pm 2%, 500 WVDC
OPER. FREQ: 438-472 KC

| REQ. PER UNIT | USED ON | | |
|---------------|---------|------------|--------|
| | MODEL | ASS'Y. NO. | DATE |
| 1 | MSR-1 | Z3 | 1-3-58 |
| 1 | A-1387 | | 5-1-58 |

A-1387 B



SCHEMATIC

CASE - Aluminum

Dimensions for Ref Only.

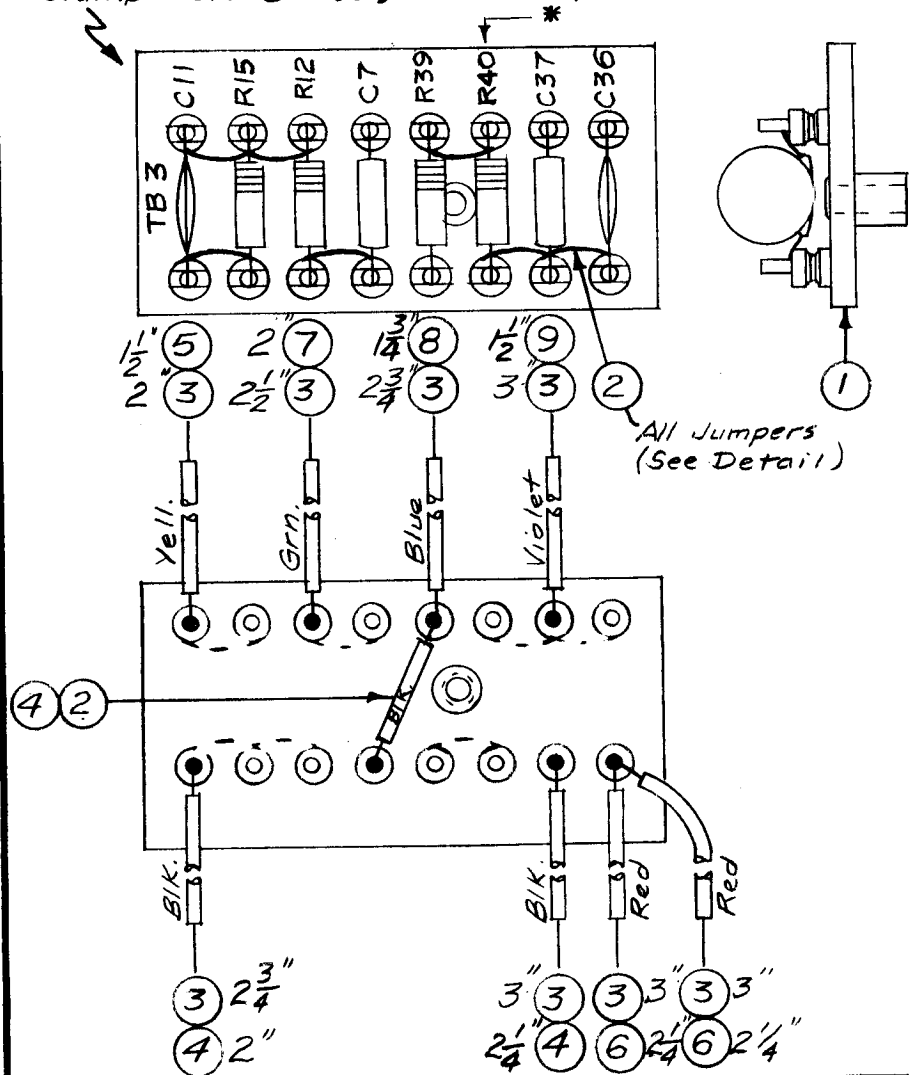
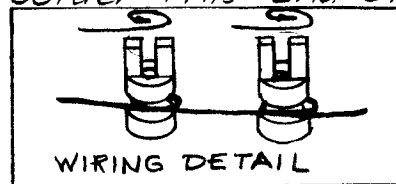
| ISSUE | ITEM | CHAN ED FROM | DATE | CH. NO. | DRAFTS | CHECKER | ENG. APP. | REQ. ITEM | PART NO. | DESCRIPTION | SYMBOL | |
|--------------------|------|-------------------------|--|---------|---------|---------|-----------|--------------------|-------------------|--|-----------------|----------------|
| | | | | | | | | | | THE TECHNICAL MATERIEL CORP. MAMARONECK, NEW YORK | | |
| B | 2 | CAP. WAS 430UF \pm 5% | 10-10-61 | 5679 | EG | ab | W | | | | | |
| | 1 | OPER. FREQ. ADDED | | | | | | | | FIRST OSCILLATOR | | |
| A | 1 | ELECTRICAL SPECS. ADDED | 1/22/59 | | JR | | P.L.K. | | | TRANSFORMER ASSY. RF | | |
| TOLERANCES | | | SCALE: FULL | | 2A-1495 | | | | | 16 1/3/58 | AJT | |
| DEC. DIM. \pm | | | MAXIMUM ALLOWABLE TOLERANCES HAVE BEEN DETERMINED AND ANY DEVIATIONS WILL BE CAUSE FOR REJECTION. REMOVE ALL BURRS AND SHARP EDGES | | | | | | | | | |
| FRAC. DIM. \pm | | | | | | | | | | | | |
| ANGULAR DIM. \pm | | | | | | | | | | | | |
| | | | | | | | | TYPE & TEMPER | HEAT TREAT. SPEC. | DRAWN | CHECKED | FINAL APPROVAL |
| | | | | | | | | | | P.L.K. | | |
| | | | | | | | | FINISH & SPEC. NO. | | ELEC. DES. APP. | MECH. DES. APP. | A-1387 B |

Stamping to be 1/8" high black Gothic.-
Stamp before ass'y. of components.

| REQ. PER UNIT | USED ON | | |
|---------------|---------|-----------|--------|
| | MODEL | ASSY. NO. | DATE |
| 1 | M5R-1 | | 3-6-57 |

A-1391 A

* Do Not Solder This End of R40 on This Ass'y.



| | | | | |
|--------|----|---------------|--------------------------------|----------|
| X | 16 | BS-100 | Solder, Soft | |
| 2 | 15 | RC20GF393K | Resistor, Fixed, Comp. | R40, R39 |
| 1 | 14 | RC20GF221K | " , " , " | R15 |
| 1 | 13 | RC20GF223K | " , " , " | R12 |
| 1 | 12 | CC-101-2 | Capacitor, Fixed, Ceramic | C37 |
| 2 | 11 | CC-100-16 | " , " , " | C36, C11 |
| 1 | 10 | CC21SL470K | " , " , " | C7 |
| 1 1/2" | 9 | PX-104-9-.034 | Insulation, Sleeving (size 20) | Violet |
| 1 3/4" | 8 | PX-104-6-.034 | | Blue |
| 2" | 7 | PX-104-4-.034 | | Green |
| 4 1/2" | 6 | PX-104-3-.034 | | Red |
| 1 1/2" | 5 | PX-104-2-.034 | | Yellow |
| 5" | 4 | PX-104-1-.034 | | Black |
| 22" | 3 | WL-100-7 | Wire, Buss (Size 22) | |
| X | 2 | WL-100-8 | Wire, Buss (Size 24) | |
| 1 | 1 | A-1367 | Term. Bd. No. 3 Sub-Ass'y. | |

| REQ. ITEM | PART NO. | DESCRIPTION | SYMBOL |
|--------------------|----------|-------------------|--------|
| # | | | |
| STOCK SIZE | | | |
| # | | | |
| MATERIAL | | | |
| # # | | | |
| TYPE & TEMPER | | HEAT TREAT. SPEC. | |
| # | | | |
| FINISH & SPEC. NO. | | | |

THE TECHNICAL MATERIEL CORP.
MAMARONECK. NEW YORK
TERMINAL BOARD NO. 3
FINAL ASS'Y. & STAMPING

| A | 3 | ASTERIK NOTE ADDED | 4/15/57 | 1 | 16 | P.L.K. | ASS |
|----------------|------|---------------------|--|---------|--------|---------|-----------|
| | 2 | LEAD LENGTHS CHG'D. | | | | | |
| | 1 | JUMPER DETAIL ADDED | | | | | |
| ISSUE | ITEM | CHAN ED FROM | DATE | CH. NO. | DRAFTS | CHECKER | ENG. APP. |
| TOLERANCES | | | SCALE: | | | | |
| DEC. DIM. ± | | | MAXIMUM ALLOWABLE TOLERANCES HAVE BEEN DETERMINED AND ANY DEVIATIONS WILL BE CAUSE FOR REJECTION. REMOVE ALL BURRS AND SHARP EDGES | | | | |
| FRAC. DIM. ± | | | | | | | |
| ANGULAR DIM. ± | | | | | | | |

163-6-57
A.J.J.
DRAWN: P.L.K.
CHECKED: []
FINAL APPROVAL: A-1391 A
ELEC. DES. APP. [] MECH. DES. APP. []