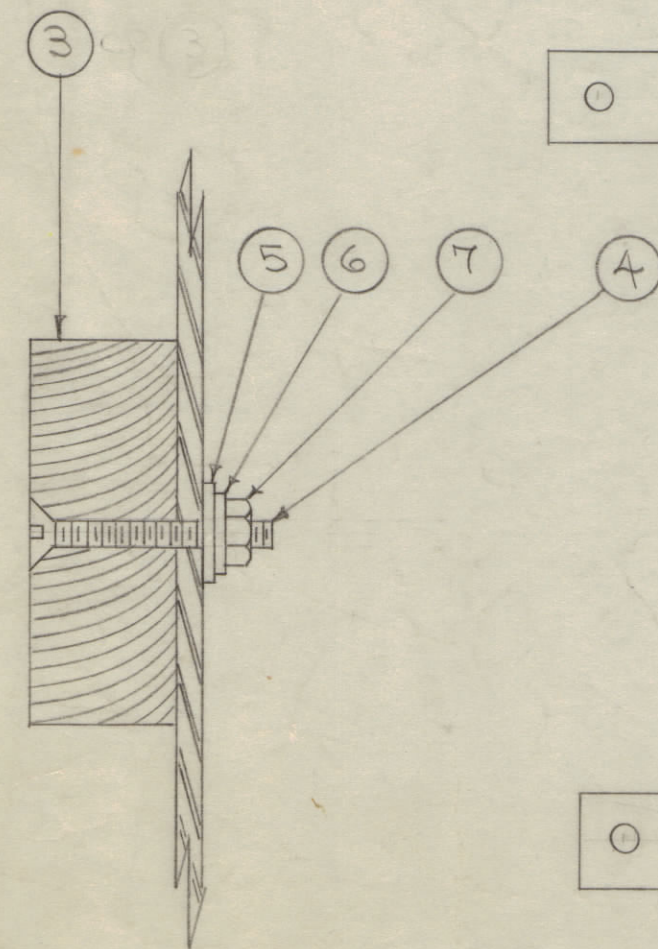
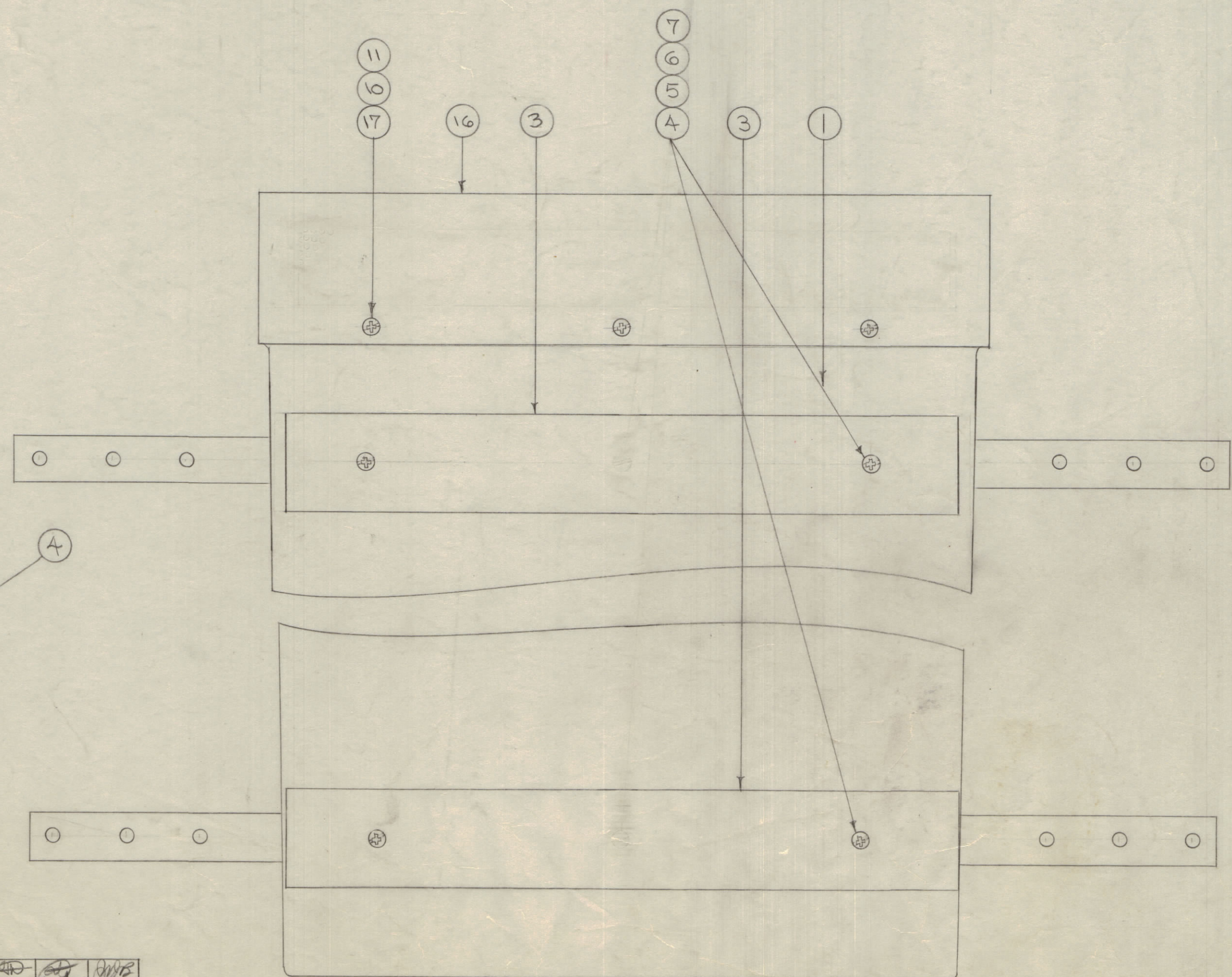
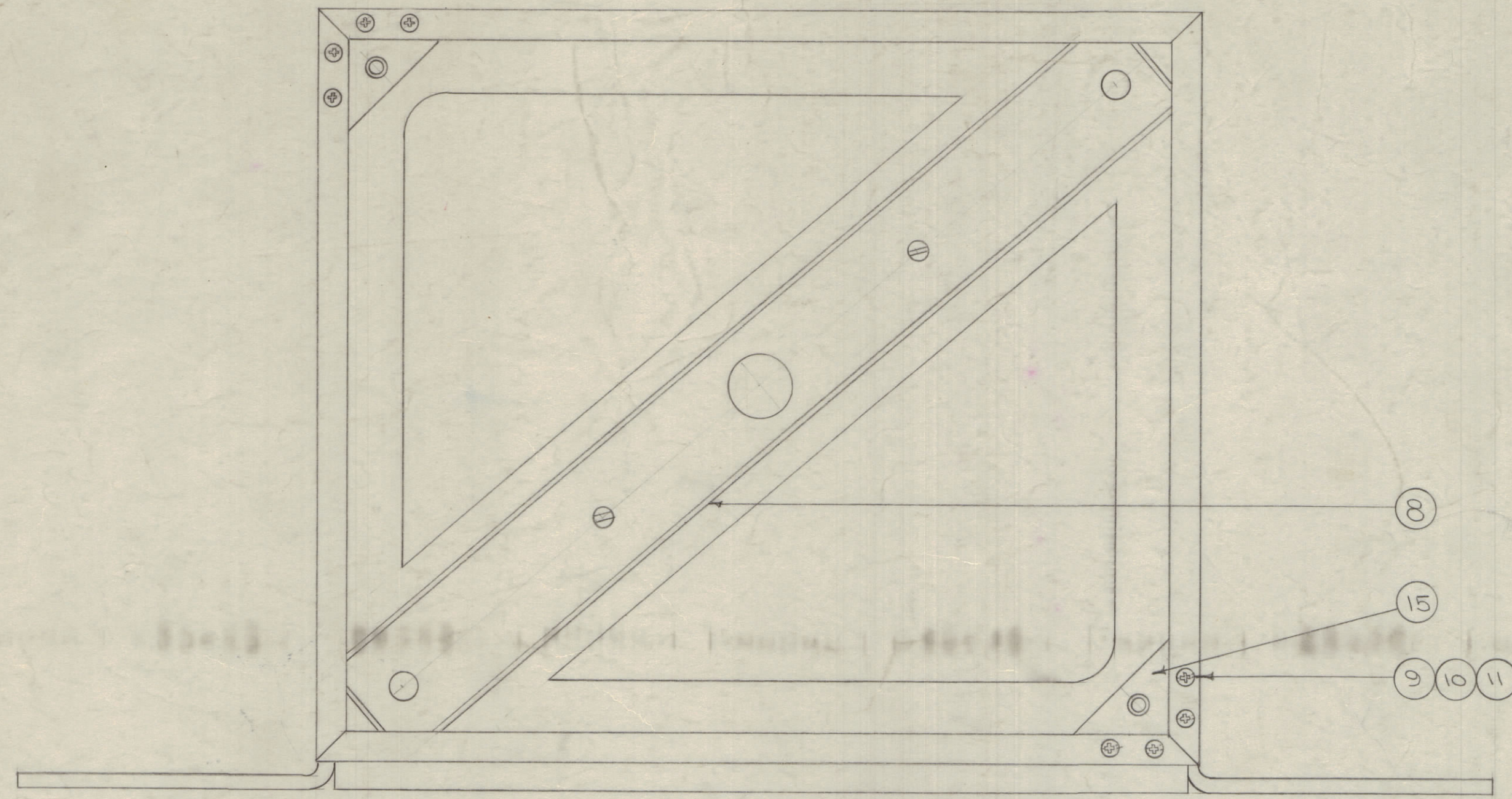
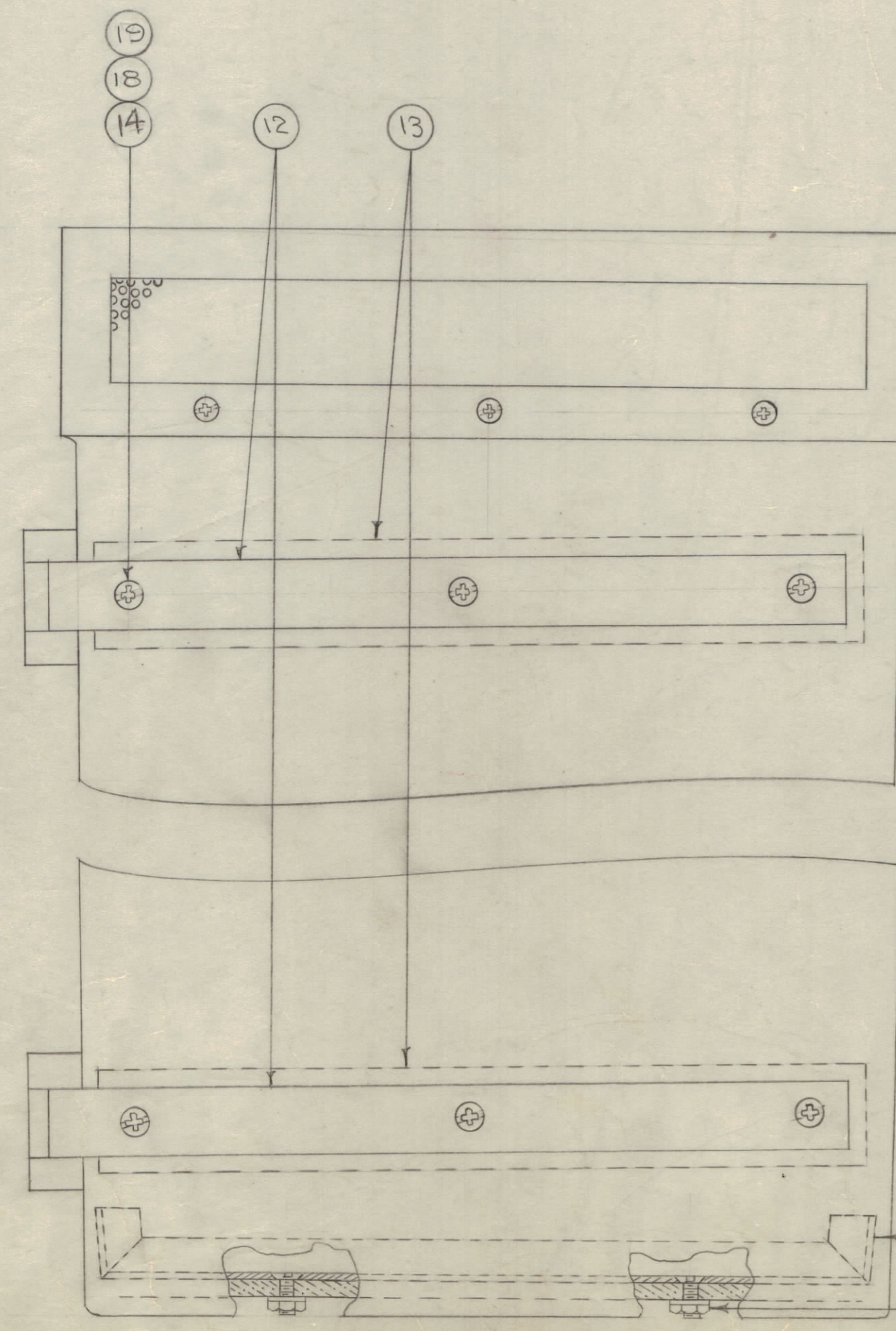


IF IT IS FOUND DESIRABLE TO CHANGE ANY TOLERANCE OR OTHER DETAIL SPECIFIED ON THIS DRAWING NOTIFY THE PURCHASER PROMPTLY.
 MAXIMUM ALLOWABLE TOLERANCES HAVE BEEN DETERMINED AND DEVIATIONS WILL BE CAUSE FOR REJECTION. REMOVE ALL BURRS AND SHARP EDGES



DETAIL, WOOD MOUNTING



NOTICE TO PERSONS RECEIVING THIS DRAWING

THE TECHNICAL MATERIEL CORPORATION claims proprietary right in the material disclosed hereon. This drawing is issued in confidence for engineering information only and may not be reproduced or used to manufacture anything shown hereon without permission from THE TECHNICAL MATERIEL CORPORATION. This drawing is loaned for mutual assistance and is subject to recall at any time.
 THE TECHNICAL MATERIEL CORPORATION
 MAMARONECK, NEW YORK
 THE TECHNICAL MATERIEL CORPORATION
 MAMARONECK, NEW YORK

REQ. ITEM	PART NO.	DESCRIPTION	SYMBOL
12	19	NTH1032BN12	NUT, HEX
12	18	LWE10MRN	WASHER, LOCK
12	17	SCBP032BN10	SCREW, MACHINE
1	16	MS-757	VENT
2	15	A-1183	SUPPORT, TOP COVER
12	14	SCBP1032BN10	SCREW, MACHINE
4	13	MS-762	STIFFENER, MTG. BKT.
4	12	FP-156	BRACKET, CASE MTG.
22	11	NTH0632BN10	NUT, HEX
22	10	LWE06MRN	WASHER, LOCK
10	9	SCFP0632BN6	SCREW, MACHINE
1	8	MS-760	SUPPORT GUIDE
4	7	NTH0832BN10	NUT, HEX
4	6	LWE08MRN	WASHER, LOCK
4	5	FW08HBN	" , FLAT
4	4	SCFP0832BN6	SCREW, MACHINE
2	3	WD-124	SEPARATOR, CASE
#	2		DELETED
1	1	A-1156	CASE SUB ASSY.

ISSUE	ITEM	CHANGED FROM	DATE	CN. NO.	DRAFTS	CHECKER	ENG. APP.
C	1	NTH1032BN12 W/SC NTH1032BN10	1/14/56	1062			
B	1	PHILIPS SCREWS WERE 26000	1/13/56	10308			
A	2	SCREW LENGTHS CHGD.	2/14/56	1			
	1	ITEM 2 DELETED					

REQ PER UNIT	MODEL	PROJECT NO.	ASSY. NO.	DATE
1	TER-3500-300		A-2061	2-9-51
1	TER-500-70		A-1474-1	10-23-57
1	TER-3500-70		A-1474-2	10-23-57
1	TER-500	529	A-1336	8-20-56
1	TER-3500		A-1225	1-24-56

STOCK SIZE	TYPE & TEMPER	HEAT TREAT. SPEC.	FINISH & SPEC. NO.
THE TECHNICAL MATERIEL CORP. MAMARONECK, NEW YORK CASE ASSEMBLY TER SERIES			
DRAWN: CDD 1/24/56 ELEC. DES. APP: ARB MECH. DES. APP: WSC	CHECKED: [Signature] FINAL APPROVAL: [Signature]		
A-1223 C			

A-1223 C