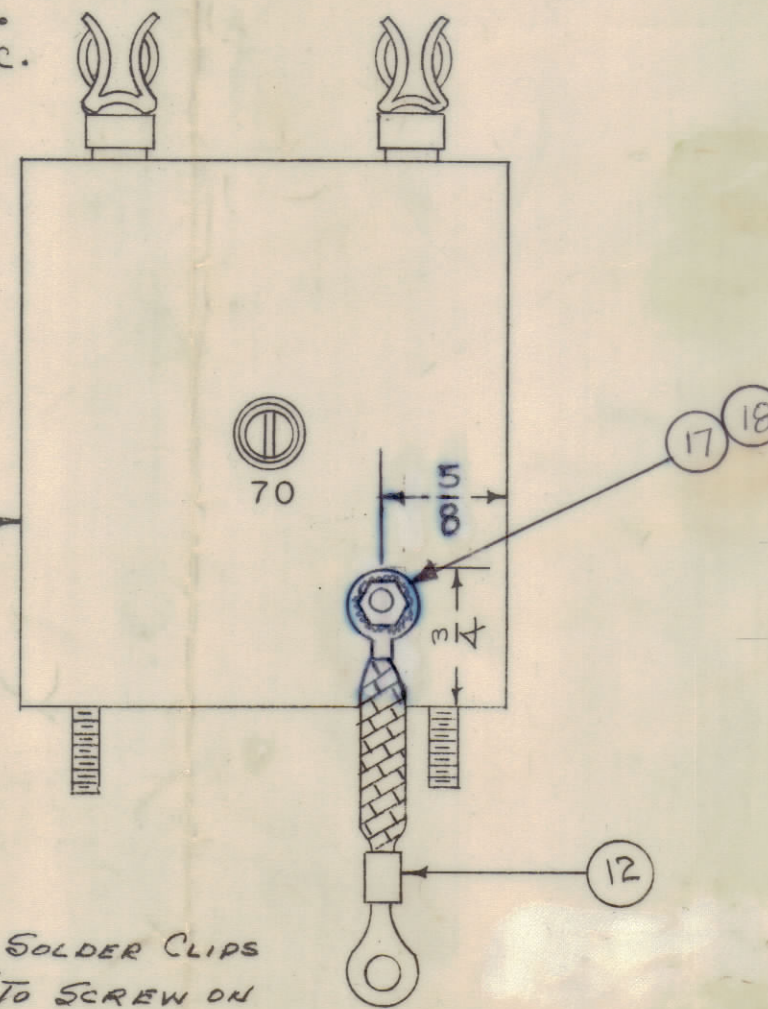
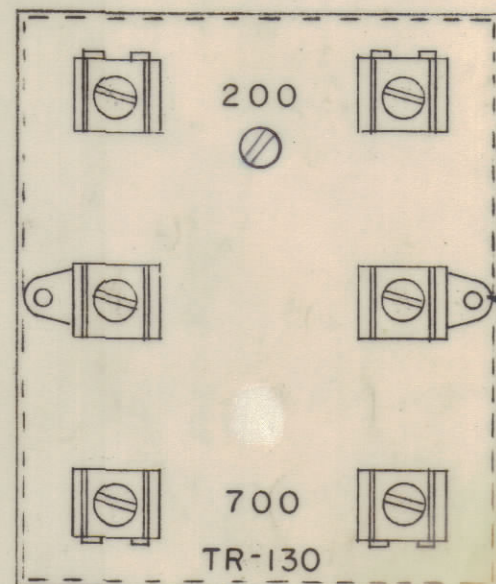
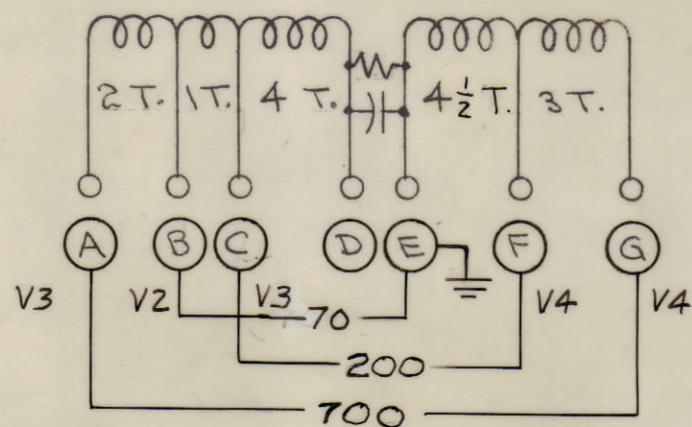
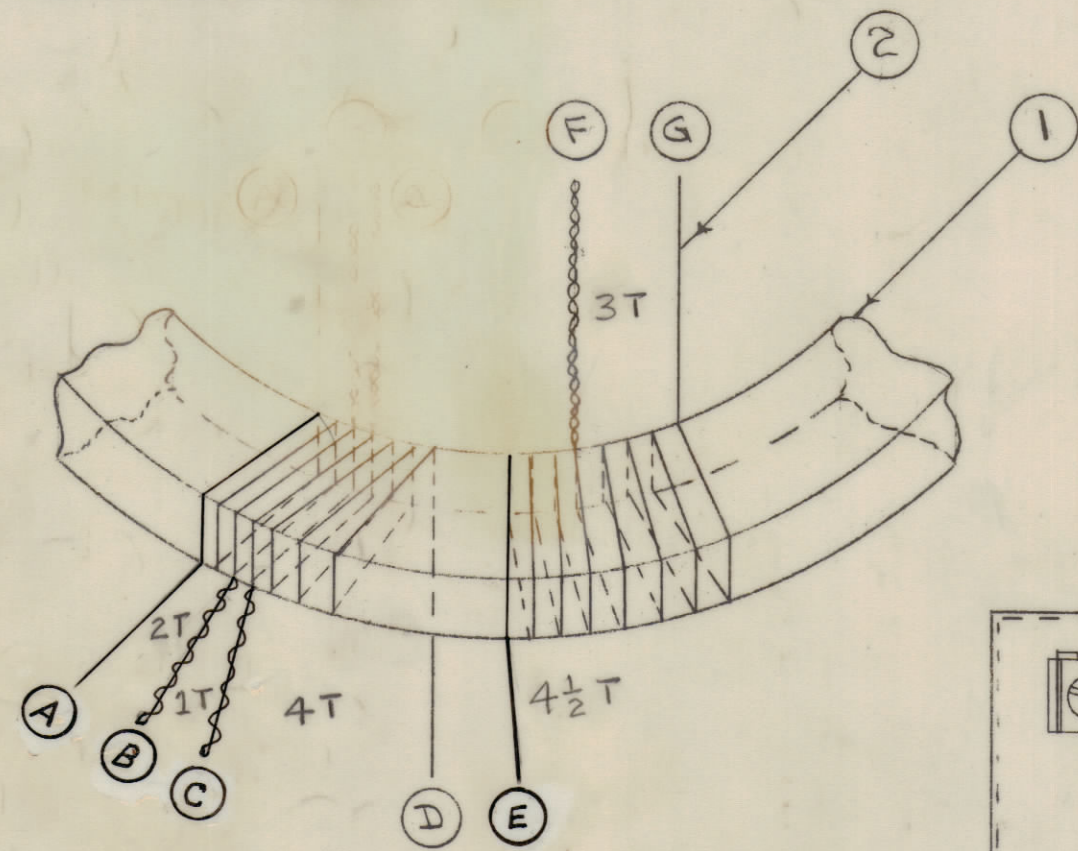


IF IT IS FOUND DESIRABLE TO CHANGE ANY TOLERANCE OR OTHER DETAIL SPECIFIED ON THIS DRAWING NOTIFY THE PURCHASER PROMPTLY.

MAXIMUM ALLOWABLE TOLERANCES HAVE BEEN DETERMINED AND DEVIATIONS WILL BE CAUSE FOR REJECTION. REMOVE ALL BURRS AND SHARP EDGES

AFTER PAINTING, STAMP TOP & SIDE AS SHOWN. 1/8 HIGH BLACK GOTHIC.



STEP-3

- 1- MAKE SOLDER CONNECTION AS SHOWN AT LEFT.
- 2- SOLDER COVER IN PLACE. CONNECT TO SL WINDING.
- 3- COAT COIL ASS'Y WITH ITEM 15 (SILICON RUBBER), AND ALLOW TO HARDEN BEFORE POTTING.
- 4- USING GL-106, POT TO WITHIN 3/8 OF TOP.
- 5- SOLDER BOTTOM IN PLACE.
- 6- SMOOTH ALL SEAMS.
- 7- ITEM 12 IN PLACE AS SHOWN.
- 8- CLEAN CASE, FINISH TOP & SIDES WITH S-115 SMOOTH GRAY ENAMEL. (DO NOT PAINT STUD END)
- 9- STAMP AS ABOVE.

STEP-4

TEST AS PER S10161

STEP 1

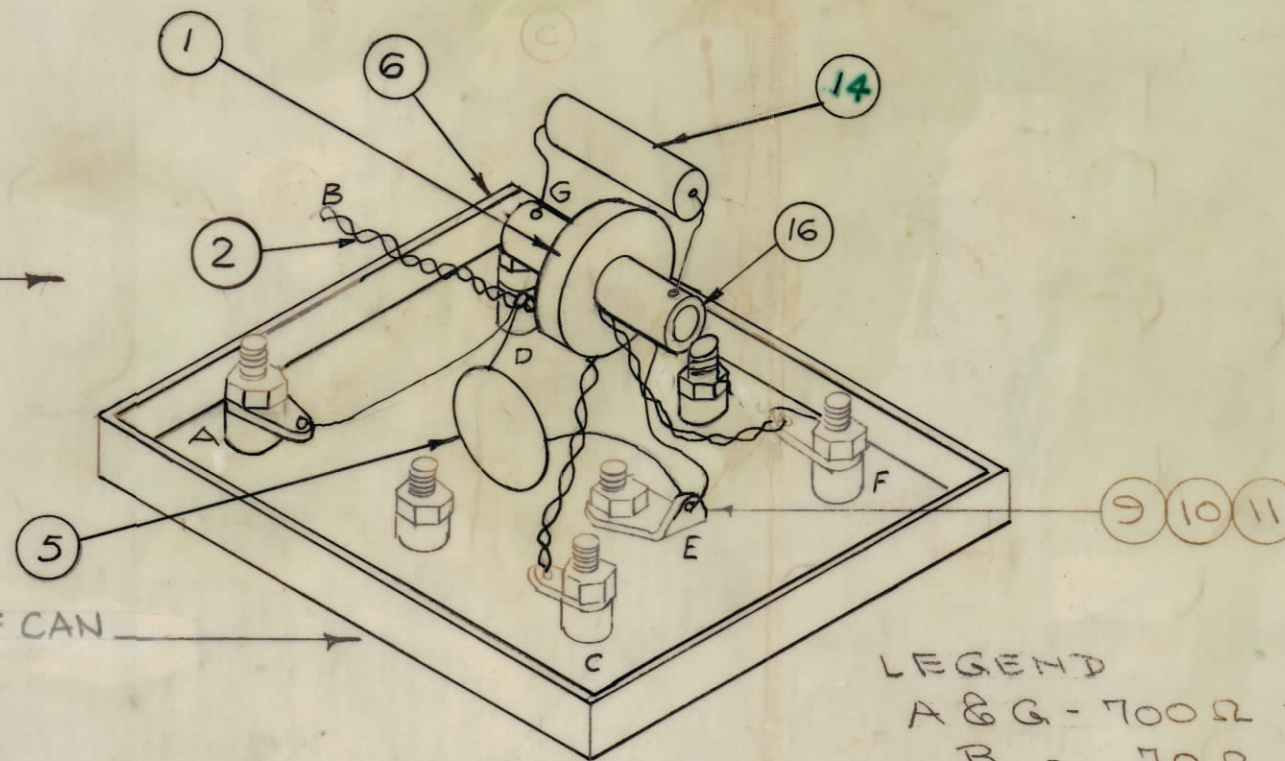
WINDING-AS ABOVE- CLOSE WOUND.

- 1- ALL LEADS TO BE AS SHORT AS POSSIBLE.
- 2- STAKE WINDING & LEADS TO COIL FORM WITH CEMENT (ITEM 3).
- 3- COAT COIL WITH U-85 (ITEM 4).
- 4- BAKE FOR 1 HOUR AT 150° C. COOL AT ROOM TEMPERATURE.

STEP 2

CONNECT AS SHOWN

KEEP COIL AND CAPAC



TOP OF CAN

LEGEND

- A & G - 700Ω TERMINALS
- B - 70Ω OUTPUT
- C & F - 200Ω TERMINALS
- E - GROUND

NOT TO BE RELEASED W/O AUTHORIZATION

AUTH. BY: DATE:

A-1212 H

H	IT. 14 CALLOUT WAS 15	1/20/78	21661	WB	KP
G	ADD ITEM 17-18/CHG STEP 3:7	12/7/76	21455	WB	KP
F	COMPLETELY REVISED	12/4/77	18627	WB	KJ
E	2 RESISTOR VALUES NOTE ADD. REVOLTS CHARTS REVISED	9.15.74	12352	WB	KP
D	2 TEST DATA CHART REVISED ADDED ITEM #14 (RC326F105K)	3.24.64	11117	WB	KP
C	1 ITEM (12) WAS A-1151	5/28/63	9145	WB	KP
B	1 ADDD ITEM 13	8/12/59	422	WB	KP
A	2 ITEM 12 ADDED	10/12/56	1	WB	KP
A	1 ITEM 6 WAS A-1140				

ISSUE	ITEM	CHANGED FROM	DATE	CN. NO.	DRAFTS	CHECKER	ENG. APP.
TOLERANCES		SCALE:					
ALL	DEC. DIM. ±	DRILL, PUNCH, COMMERCIAL STOCK					
OTHERS	FRAC. DIM. ±	SIZES AND MANUFACTURERS					
	ANGULAR DIM. ±	TOLERANCES ARE NOT INCLUDED.					

1	RAC-30	PROJECT NO.	A-1122	DATE	56
REQ. PER UNIT	MODEL	PROJECT NO.	ASSY. NO.	DATE	

1	18	NTH0632BNS	NUT, HEX	
1	17	LWE0632	WASHER, LOCK, EXT.	
1	16	CF10012	COIL, MOUNT	
X	15	GL10005	SILICON RUBBER	
1	14	RC326F105K	RESISTOR, FIXED	
X	13	DELETED		
1	12	CA-409-95-2.25	GROUND STRAP ASSY	
1	11	NTH046BC6	NUT, HEX	
1	10	TE-104-1	LUG, LOCKING	
1	9	SCBS0440BC4	SCREW, MACHINE	
X	8	BS-100	SOLDER, SOFT	
X	7	GL-106	COMPOUND, POTTING	
1	6	BX-148	CASE & COVER, ASSY.	
1	5	CC10006-1	CAPACITOR, FIXED, CER	
X	4	GL-104-2	INSULEX, U-85	
X	3	GL-103	CEMENT	
X	2	WI-122-30	WIRE, ELEC, MAG, T.	
1	1	CI-10010-1	CORE, TOROIDAL	

REQ. ITEM	PART NO.	DESCRIPTION	SYMBOL
THE TECHNICAL MATERIEL CORP.			
MAMARONECK, NEW YORK			
TRANSFORMER ASSEMBLY			
TR-130			
STOCK SIZE			
MATERIAL	WEIGHT PER PC.		
TYPE & TEMPER	ODD 3/28/76	QMB.	
HEAT TREAT. SPEC.	DRAWN	ELEC. DES. APP.	MECH. DES. APP.
	CHECKED	FINAL APPROVAL	
FINISH & SPEC. NO.		A-1212 H	