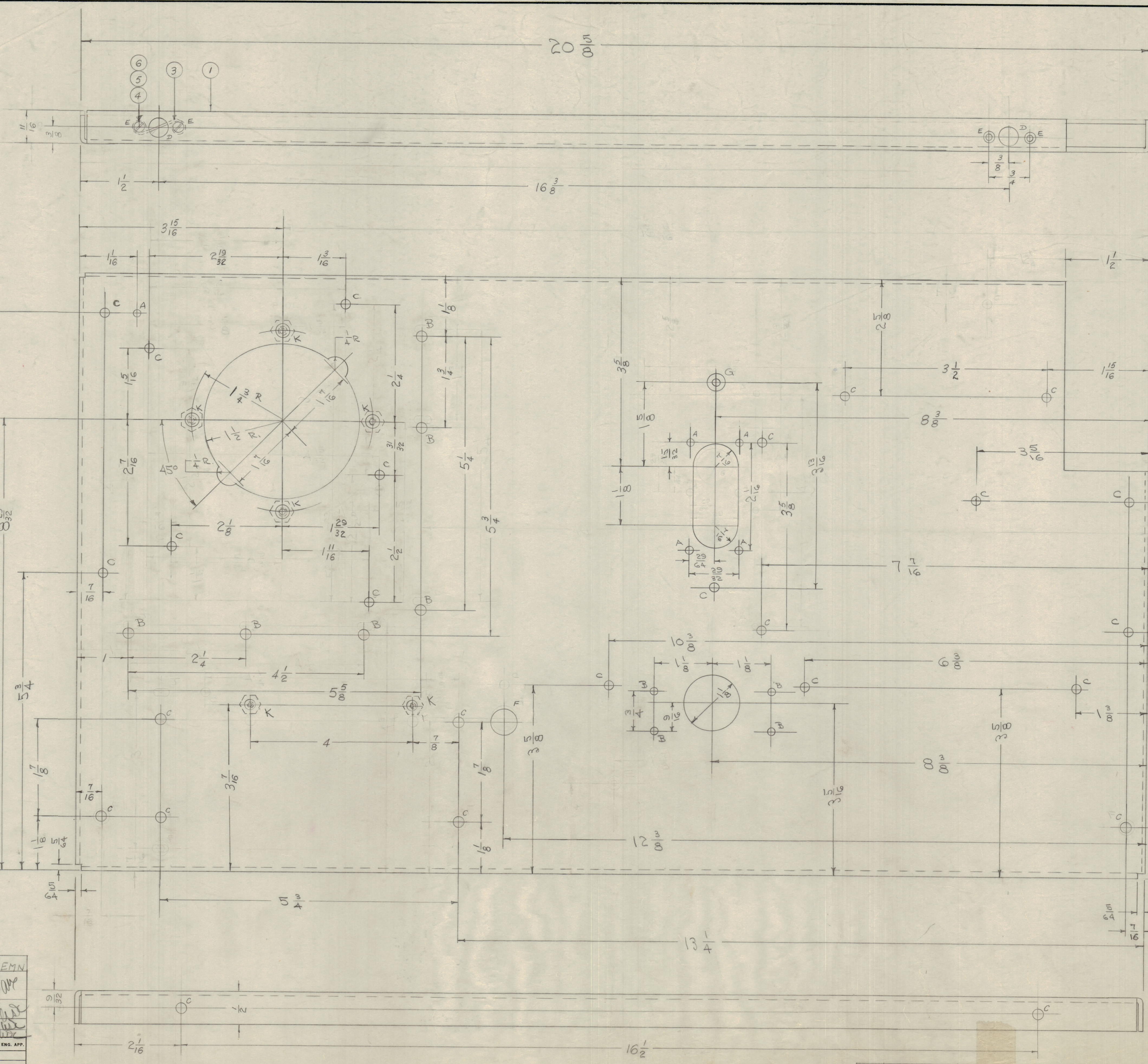


IF IT IS FOUND DESIRABLE TO CHANGE ANY TOLERANCE OR OTHER DETAIL SPECIFIED ON THIS DRAWING NOTIFY THE PURCHASER PROMPTLY.  
 MAXIMUM ALLOWABLE TOLERANCES HAVE BEEN DETERMINED AND DEVIATIONS WILL BE CAUSE FOR REJECTION. REMOVE ALL BURRS AND SHARP EDGES

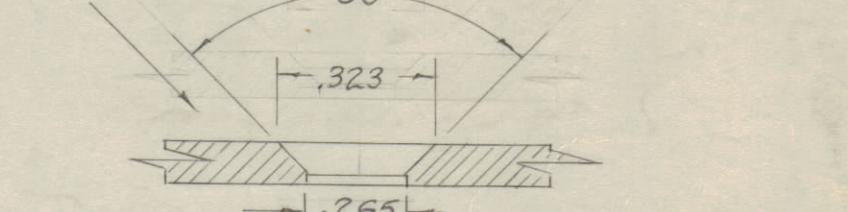
NOTICE TO PERSONS RECEIVING THIS DRAWING

THE TECHNICAL MATERIEL CORP. claims proprietary right in the material shown hereon. This drawing is issued in confidence for engineering information only and may not be reproduced or used to manufacture anything shown hereon without permission from THE TECHNICAL MATERIEL CORPORATION to the user. This drawing is loaned for mutual assistance and is subject to recall at any time.

Property of:  
 THE TECHNICAL MATERIEL CORPORATION  
 MAMARONECK, NEW YORK



- A -  $\frac{9}{64}$  (.140) D 5 HOLES REQ.
- B -  $\frac{11}{64}$  (.171) D 10 " " "
- C -  $\frac{13}{64}$  (.203) D 26 " " "
- D -  $\frac{15}{64}$  (.234) D 2 " " "
- E - DRILL & C/SINK FOR 3-48 F.H.S. 4 REQ.
- F -  $\frac{1}{2}$  (.500) D 1 REQ.
- G - DRILL & C/SINK #8 F.H.S. 1 " "
- K - 6 REQ.



ISSUE	ITEM	CHANGED FROM	DATE	CN. NO.	DRAFTS	CHECKER	ENG. APP.
D	1	S-404 IRIDIUM WAS	12/15/54	1001	AB	EMN	
C	3	S-101 CAUSTIC DIP	12/15/54	3	16		
C	2	ITEM 2 WAS 4 REQ.					
C	1	4 HOLES WERE 28					
B	3	4 HOLES WERE 34 REQ.	8/14/50	2	ESD		
B	2	4 HOLES WERE 4 REQ.					
B	1	6 HOLES WERE 1" DIA.					
A	2	6 HOLES WERE 1/16	7/23/50	1	HALL		
A	1	6" HOLE RELOCATED					

FORM - 111

REQ. ITEM	PART NO.	DESCRIPTION	SYMBOL
2	6	NTH0348806 NUT, HEX	
4	5	LWS03MRC WASHER LOCK	
4	4	SCFS0348804 SCREW, MACHINE	
2	3	FS-102-1 SPRING, FASTENER	
6	2	SM-107-3-3 INSERT HEX	
1	1	MS-686 LEFT SIDE CHASSIS (NO DWG)	

REF. LD-283

STOCK SIZE

MATERIAL WEIGHT PER PC.

52S H32

TYPE & TEMPER

HEAT TREAT. SPEC.

FINISH & SPEC. NO.

THE TECHNICAL MATERIEL CORP.  
 MAMARONECK, NEW YORK

LEFT SIDE PLATE

POUS/AMPL. GPT-750

DRAWN ELEC. DES. APP. MECH. DES. APP.

CHECKED FINAL APPROVAL

A-1210 D

REQ. PER UNIT	MODEL	PROJECT NO.	ASSY. NO.	DATE
1	RTF	F-271		9-13-55

A-1210 D