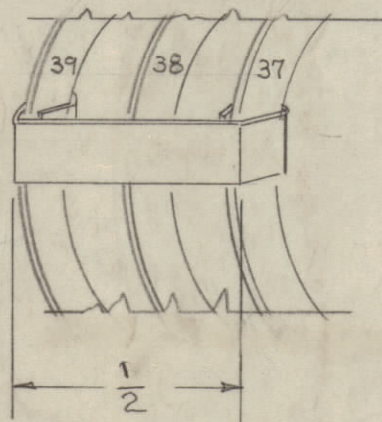
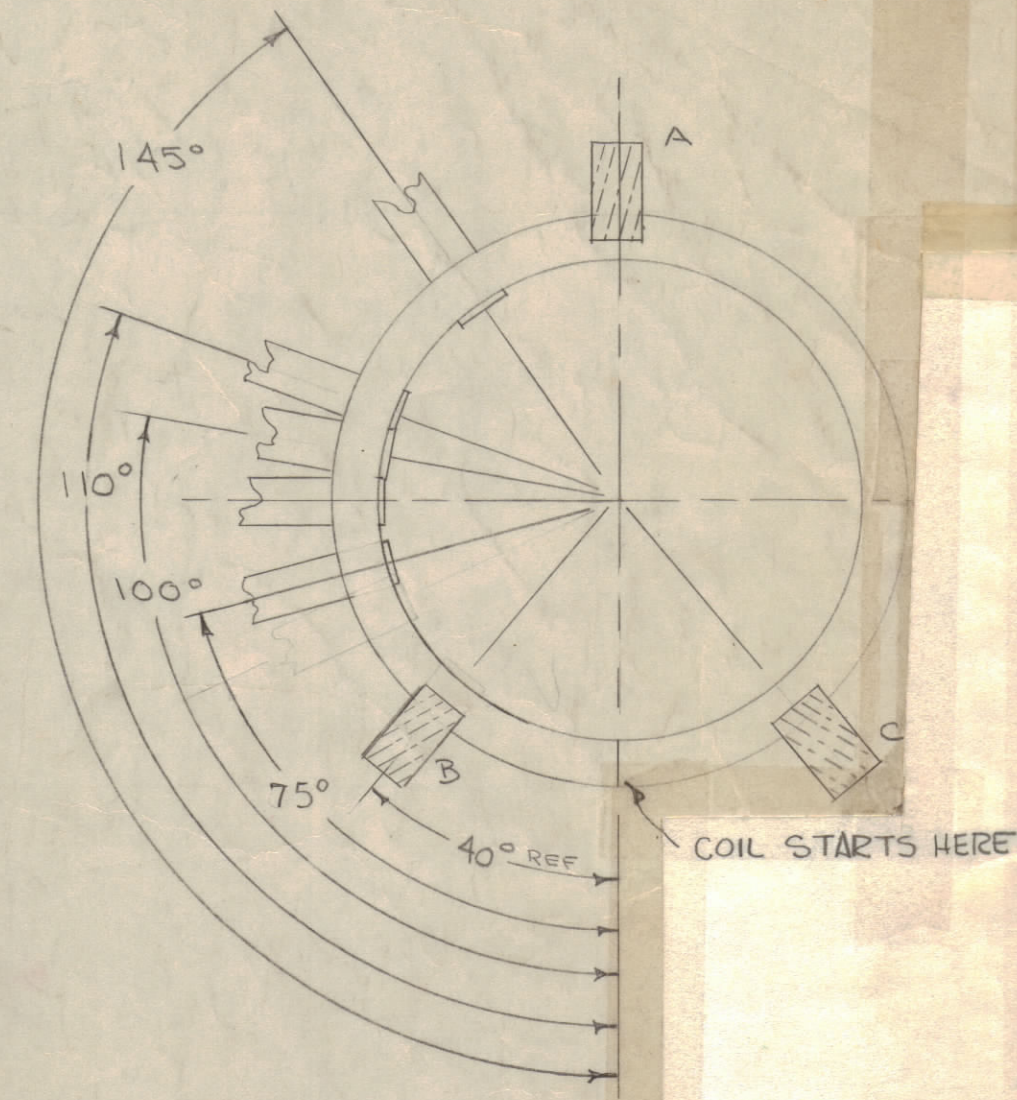
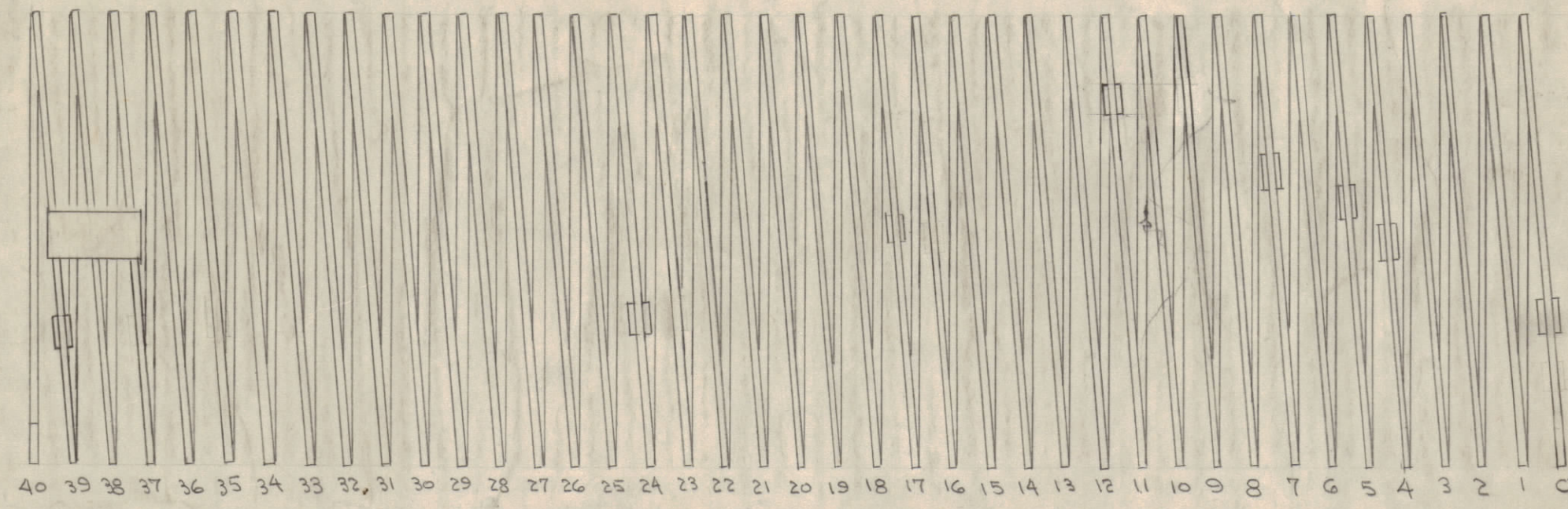
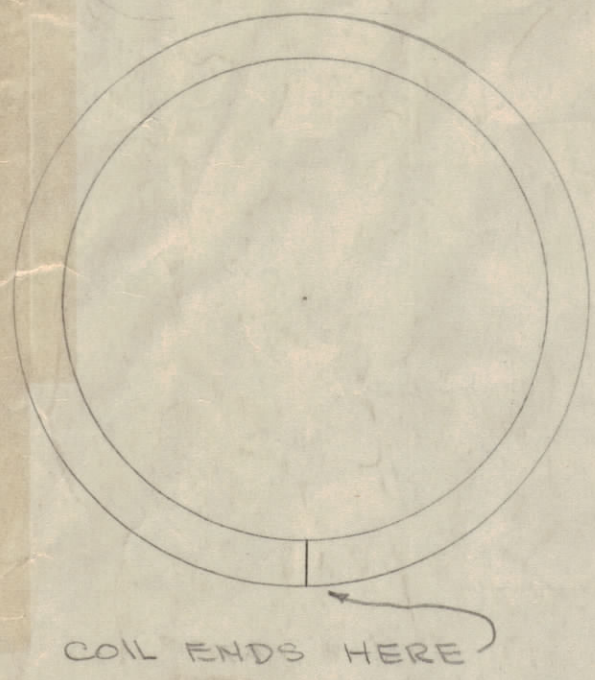


IF IT IS FOUND DESIRABLE TO CHANGE ANY TOLERANCE OR OTHER DETAIL SPECIFIED ON THIS DRAWING NOTIFY THE PURCHASER PROMPTLY.

MAXIMUM ALLOWABLE TOLERANCES HAVE BEEN DETERMINED AND DEVIATIONS WILL BE CAUSE FOR REJECTION. REMOVE ALL BURRS AND SHARP EDGES

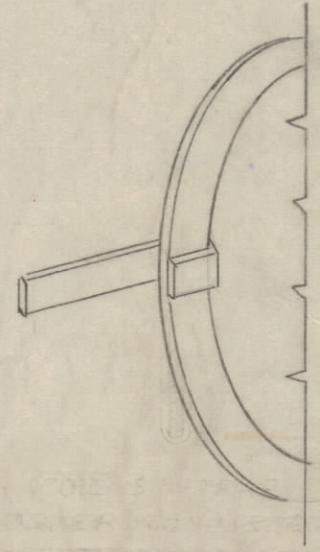


SOLDERING DETAIL ITEM 9

NOTE - TURN #38 MUST NOT TOUCH STRAP.

ITEM NO	COIL TURN	CONNECT AT	CONNECT TO
1	0	75°	PIN 6
2	4	90°	" 7
3	5	100°	" 8
4	7	110°	" 9
5	11	145°	" 0
6	17	90°	" 1
7	24	65°	" 2
8	39	65°	CB-125B-1000T
9	37	90°	COIL TURN 39

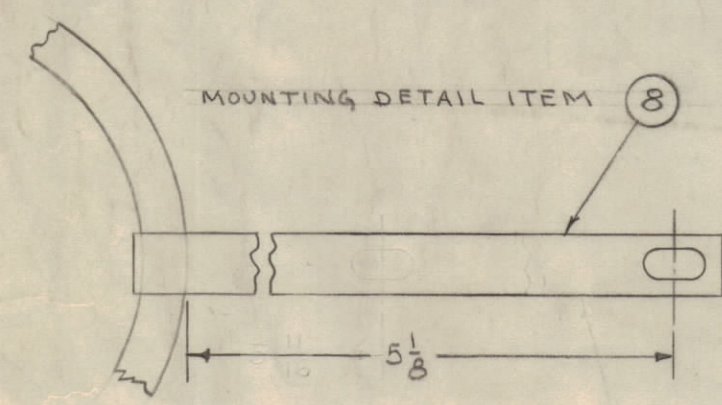
SW-166



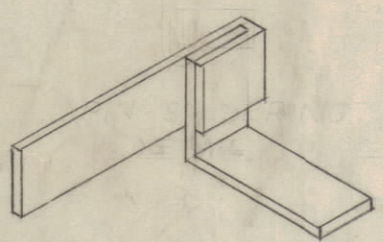
SOLDERING DETAIL STRAP CONNECTION

- USE CL-118
1. REMOVE PARTS A-B & C. (KEEP PARTS REMOVED)
  2. SOLDER ON ITEMS 1 THRU 9 AS SHOWN IN CHART & DETAILS.
  3. SANDBLAST.
  4. SILVER PLATE .0002
  5. REASSEMBLE PARTS A-B & C.
  6. MAKE CONNECTIONS TO SW-166, AS SHOWN.

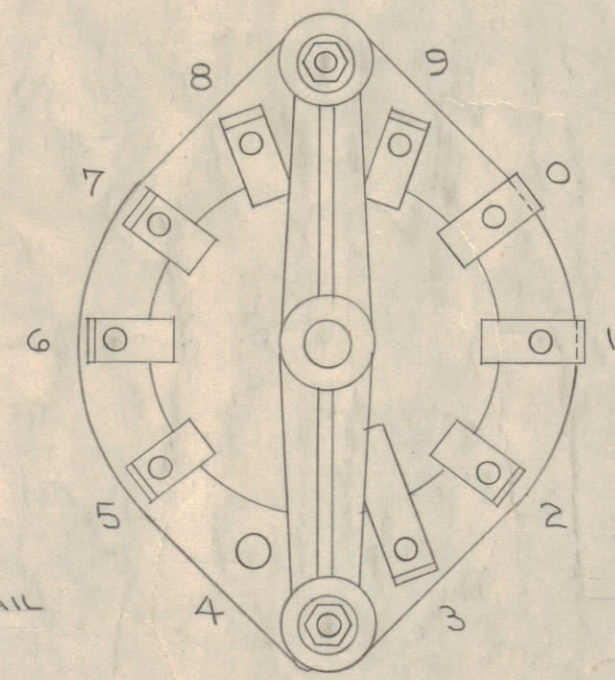
NOTE - FOR PROPER PHYSICAL CONFIGURATION, COIL (L113) AND SWITCH (SW-166) MUST BE ASSEMBLED IN A JIG.



MOUNTING DETAIL ITEM 8



PIN SOLDERING DETAIL (EXCEPT PIN 6)



SW-166 REAR OF WAFER

DETAIL - FOR CONNECTIONS ONLY

REQ. ITEM	PART NO.	DESCRIPTION	SYMBOL	
1	11	CL-118-31	COIL, P.A. TANK	L113
X	10	BS-104	EUTECTIC, TIN, WELD #1	
1	9	MS-783-6-26-A	STRAP, CONNECTOR	
1	8	MS-202-14-6.00	STRAP, CONNECTOR	
1	7	MS-783-6-28-A		
1	6	-36-		
1	5	-52-		
1	4	-32-		
1	3	-30-		
1	2	-30-		
1	1	T-28-T		

THE TECHNICAL MATERIEL CORP.  
MAMARONECK, NEW YORK

P.A. TANK COIL ASSEMBLY

LOW FREQ. POWER AMP

CDD 1-11-56

DRAWN: *[Signature]* ELEC. DES. APP. *[Signature]* MECH. DES. APP. *[Signature]*

CHECKED: *[Signature]* FINAL APPROVAL: *[Signature]*

5-245 SILVER PLATE  
5-423 CLEAR IRIDITE  
FINISH & SPEC. NO.

A-1209 K

ISSUE ITEM	CHANGED FROM	DATE	CN. NO.	DRAFTS	CHECKER	ENG. APP.
K	DN USE CL-118; NEW #3 NOTE ADDED; EXISTING NOTES CHANGED FROM 3 TO 4, 4 TO 5, & 5 TO 6.	2-17-65	13533	221	<i>[Signature]</i>	<i>[Signature]</i>
J	PICTORIAL CORRECTED ON CHART, ITEM #5 WAS TURN 9	6-18-63	9305		<i>[Signature]</i>	<i>[Signature]</i>
H	FINISH & SPEC WAS SILVER PLATE .0002	2-19-63	8279		<i>[Signature]</i>	<i>[Signature]</i>

TOLERANCES: DEC. DIM. ±, FRAC. DIM. ±, ANGULAR DIM. ±

SCALE: DRILL, PUNCH, COMMERCIAL STOCK SIZES AND MANUFACTURERS TOLERANCES ARE NOT INCLUDED.

REQ. PER UNIT	MODEL	PROJECT NO.	ASSY. NO.	DATE
1	RTF-2	P/A		11-20-58
1	RTF			1-11-56

USED ON