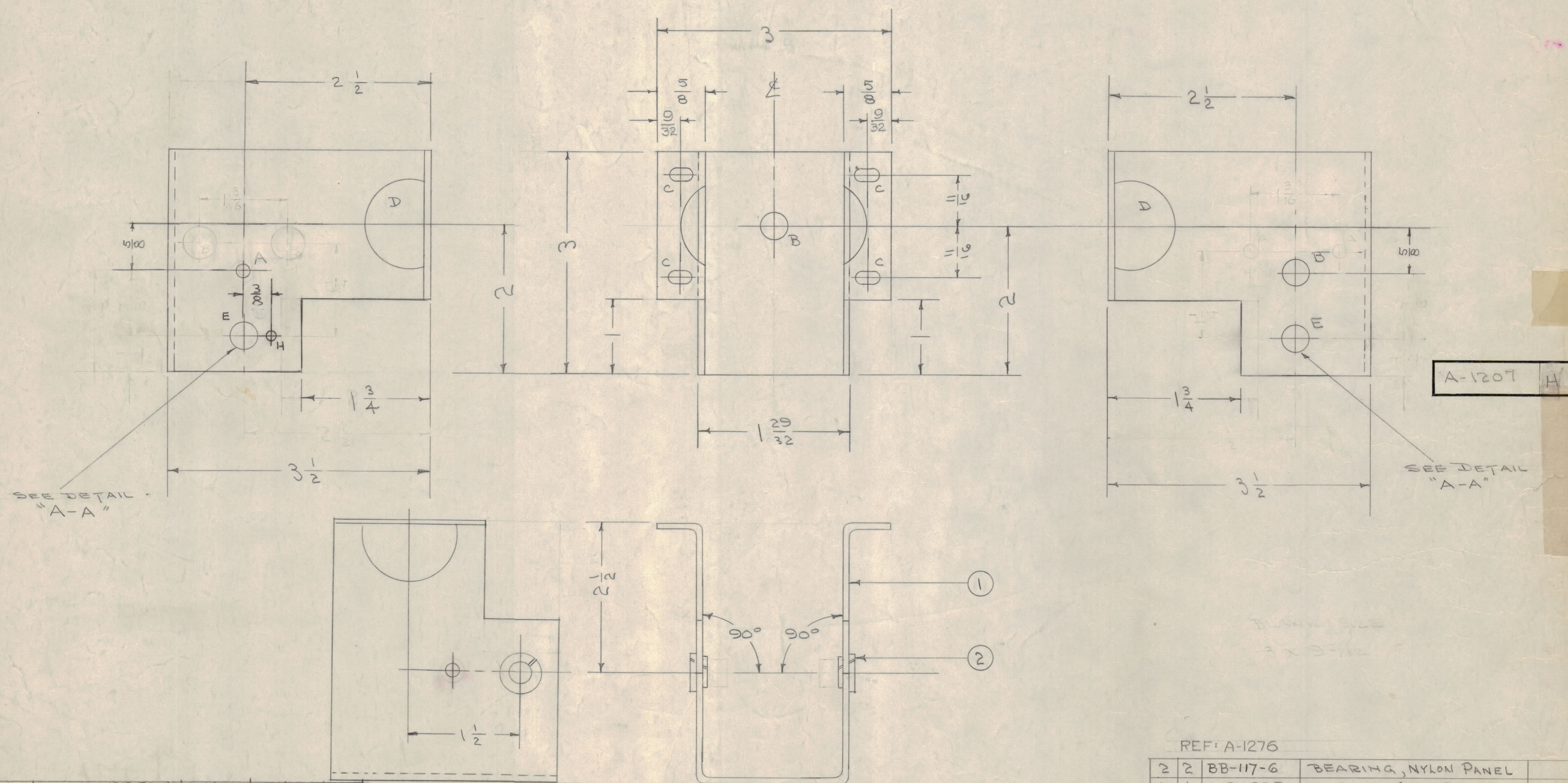


IF IT IS FOUND DESIRABLE TO CHANGE ANY TOLERANCE OR OTHER DETAIL SPECIFIED ON THIS DRAWING NOTIFY THE PURCHASER PROMPTLY.

MAXIMUM ALLOWABLE TOLERANCES HAVE BEEN DETERMINED AND DEVIATIONS WILL BE CAUSE FOR REJECTION. REMOVE ALL BURRS AND SHARP EDGES

- A - 3/16 (.187) DIA. 1 HOLES REQ.
- B - 1/16 (.031) DIA. 2 " " "
- C - 1/64 X 1/32 SLOT 4 SLOTS "
- D - 1/4 (.125) DIA. 2 HOLES "
- E - 5/16 (.312) DRILL & REAM FOR TIGHT FIT (CLASS 6) OF ITEM 2 (AFTER CAUSTIC DIP) THEN REAM TO FIT 182108 2 HOLES REQ.
- H - 1/8 (.125) D 1 HOLE



H	1	S404-YEL-IRIDITE WAS S101 CAUSTIC DIP	12-9-59	1001	JP	EMN
G	2	"H" HOLE ADDED	12-18-58	582	file	
F	1-2	2 "A" & "B" HOLES DELETED	12-3-58		J.C.B.	
F	2-	2 "A" HOLES ADDED				
E	1	ITEM 2 PT. NO. WAS BB-108, BEARING, DILITE	5/7/58	417	arc	file
D	1	NOTE "E" REVISED	3-12-57	3	SC	file
B	1	5/32 WAS 5/16	3-7-57	2	SC	file
A	1	"A" HOLE WAS 5/32 D	5/8/56	1	file	file

ISSUE	ITEM	CHANGED FROM	DATE	CN. NO.	DRAFTS	CHECKER	ENG. APP.
TOLERANCES		SCALE:					
ALL OTHERS	DEC. DIM. ±	DRILL, PUNCH, COMMERCIAL STOCK SIZES AND MANUFACTURERS TOLERANCES ARE NOT INCLUDED.					
	FRAC. DIM. ±						
	ANGULAR DIM. ±						

DETAIL "A-A"

REF: A-1276

2	2	BB-117-6	BEARING, NYLON PANEL
1	1	MS-689	HOUSING (NO DRAWING)
REQ. ITEM	PART NO.		DESCRIPTION
.081		THE TECHNICAL MATERIEL CORP.	
ALUMINUM		MAMARONECK, NEW YORK	
5052 H32		HOUSING, RIGHT ANGLE DR.	
TYPE & TEMPER		POW/AMP.	
HEAT TREAT. SPEC.		DRAWN	
S404-YEL-IRIDITE		ELEC. DES. APP.	
FINISH & SPEC. NO.		MECH. DES. APP.	

USED ON

1	RTF	271	9-14-55
REQ PER UNIT	MODEL	PROJECT NO.	DATE

checked: *file* final approval: *file*

A-1207 H