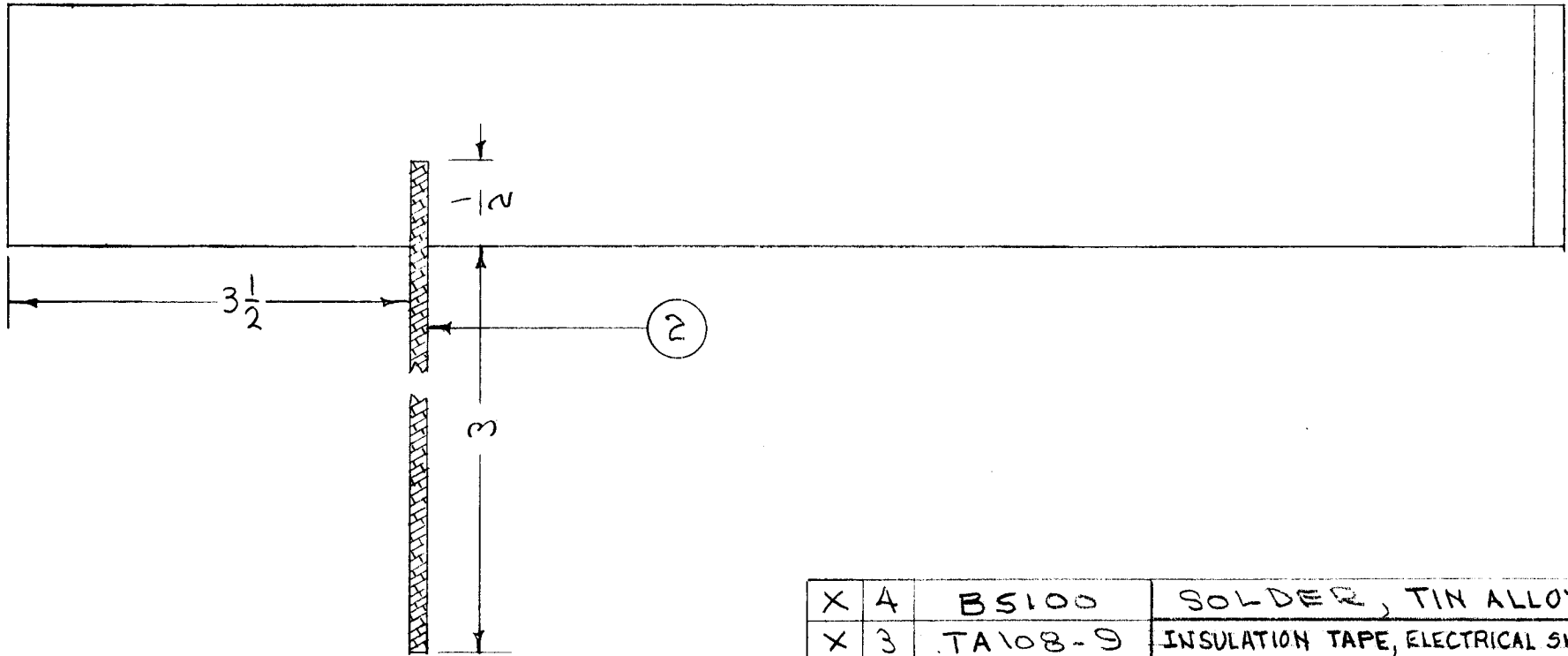
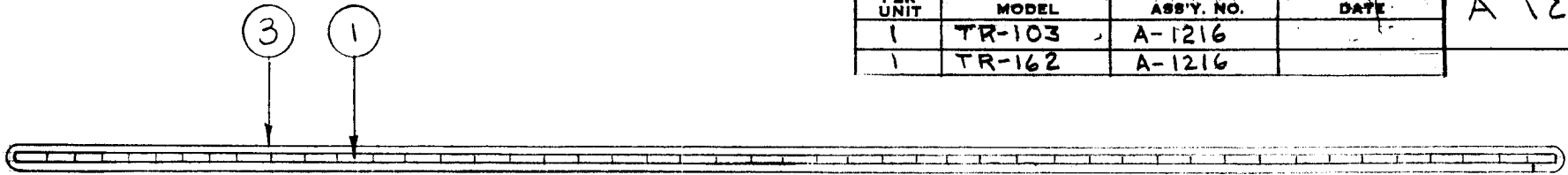


REQ. PER UNIT	USED ON		
	MODEL	ASS'Y. NO.	DATE
1	TR-103	A-1216	
1	TR-162	A-1216	

A 1213 C



X	4	BS100	SOLDER, TIN ALLOY
X	3	TA108-9	INSULATION TAPE, ELECTRICAL SIZE 1 1/2
3 1/2"	2	WL103-2	BRAID, WIRE, FLAT SIZE 1/8
1	1	MS1205-7.50	SHIELD

ISSUE	ITEM	CHANGED FROM	DATE	CH. NO.	DRAFTS	CHECKER	ENG. APP.
C		IT. 2 WAS WL103-1, SIZE WAS 1/16 3-1/2 WAS 2", IT. 1 WAS MS1205-8	3-8-67	17929		<i>[Signature]</i>	<i>[Signature]</i>
B	1	B/M, TITLE, USED ON UPDATE.	9-29-64	12483	2	<i>[Signature]</i>	<i>[Signature]</i>
A	1	ITEM 1 WAS MS-792	6-9-61	5030	M.H.F.	<i>[Signature]</i>	<i>[Signature]</i>

REQ. ITEM	PART NO.	DESCRIPTION	SYMBOL
THE TECHNICAL MATERIEL CORP. MAMARONECK. NEW YORK			
STOCK SIZE			
MATERIAL			
SHIELD ASSY.			
TYPE & TEMPER		HEAT TREAT. SPEC.	DRAWN
FINISH & SPEC. NO.		ELEC. DES. APP.	MECH. DES. APP.

TOLERANCES

DEC. DIM. ±
FRAC. DIM. ±
ANGULAR DIM. ±

SCALE:

MAXIMUM ALLOWABLE TOLERANCES HAVE BEEN DETERMINED AND ANY DEVIATIONS WILL BE CAUSE FOR REJECTION.
REMOVE ALL BURRS AND SHARP EDGES

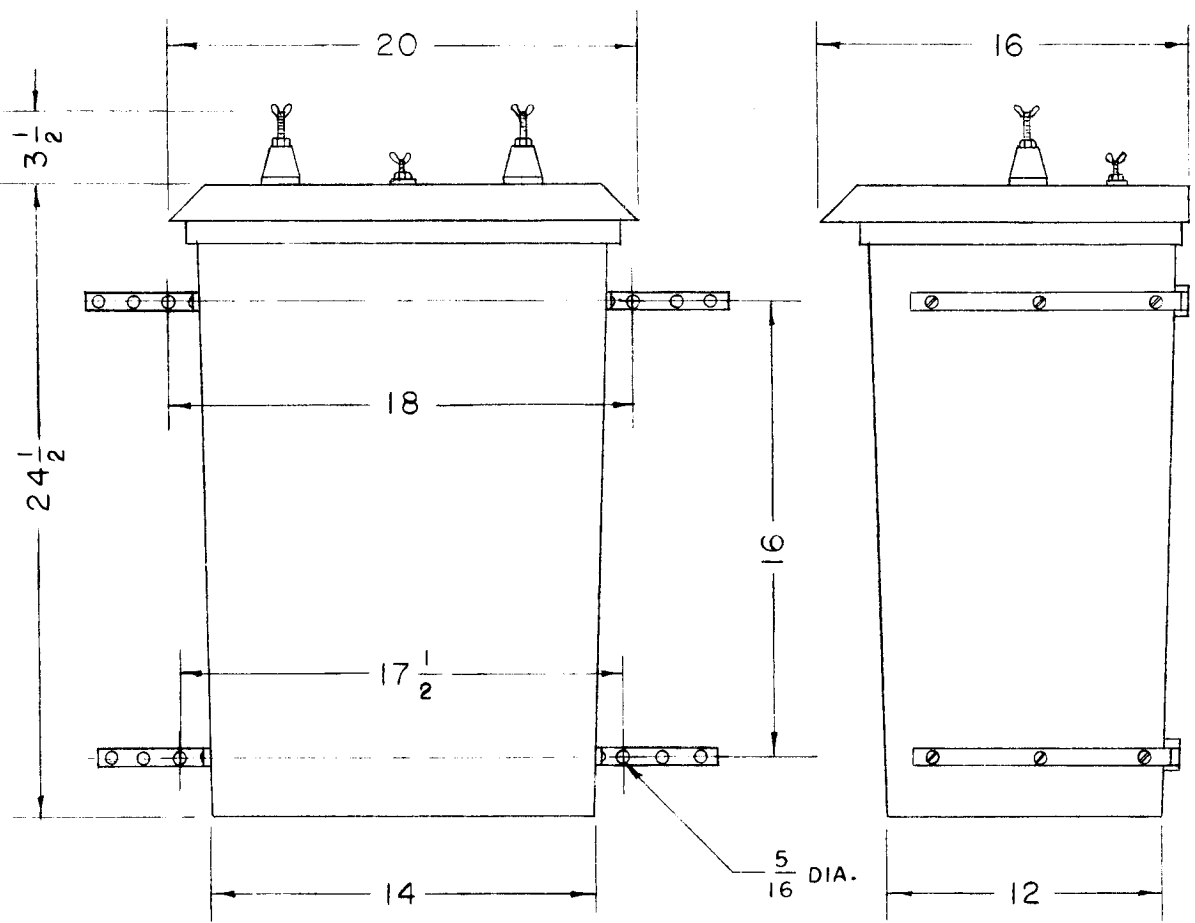
CDD 1-16-56

[Signature]

[Signature]

A 1213 C

REQ. PER UNIT	USED ON			A-1220
	MODEL	ASS'Y. NO.	DATE	
1	TER-3500		1-11-56	

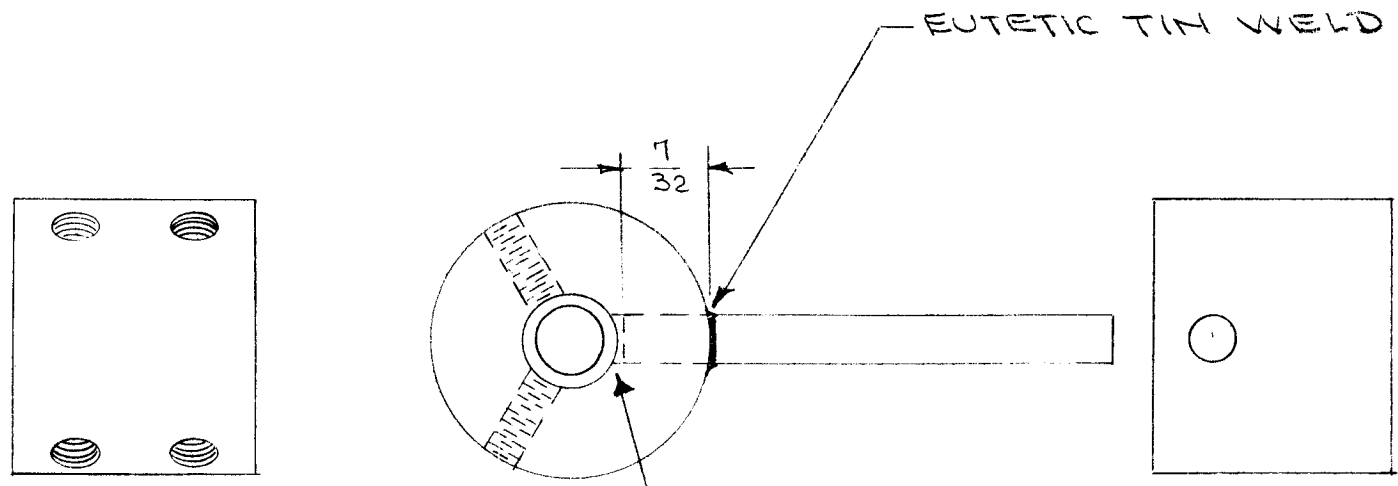


ELECTRICAL SPECIFICATIONS
 RESISTANCES: TER-3500 (600)
 NOMINALLY 600 ohms.
 DISSIPATION RATING: UP TO 1750 watts
 AT 30 MCS.

MECHANICAL SPECIFICATIONS
 CASE: FIBREGLASS REINFORCED
 PLASTIC.

REQ.	ITEM	PART NO.	DESCRIPTION	SYMBOL										
			THE TECHNICAL MATERIEL CORP.											
			MAMARONECK, NEW YORK											
			MODEL TER-3500											
			* MATERIAL											
ISSUE	ITEM	CHANGED FROM	DATE	CH. NO.	DRAFTS	CHECKER	ENG. APP.							
TOLERANCES			SCALE:		4A-1225									
DEC. DIM. ±			MAXIMUM ALLOWABLE TOLERANCES HAVE BEEN DETERMINED AND ANY DEVIATIONS WILL BE CAUSE FOR REJECTION. REMOVE ALL BURRS AND SHARP EDGES							TYPE & TEMPER	HEAT TREAT. SPEC.	DRAWN	CHECKED	FINAL APPROVAL
FRAC. DIM. ±										FINISH & SPEC. NO.		ELEC. DES. APP.	MECH. DES. APP.	
ANGULAR DIM. ±											A-1220			

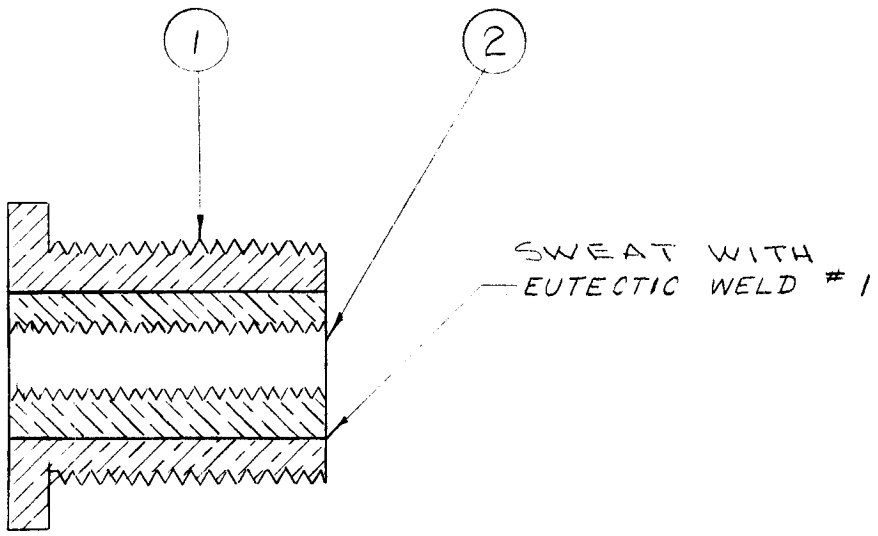
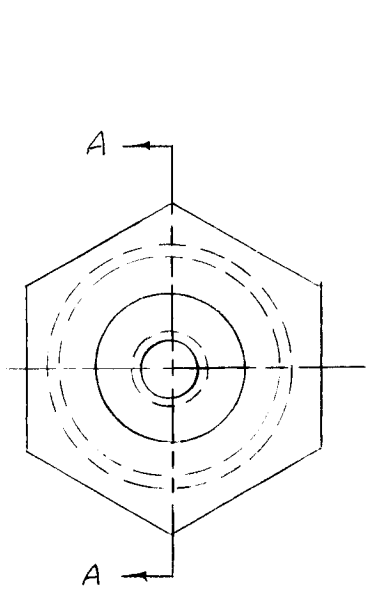
REQ. PER UNIT	USED ON			A-1233
	MODEL	ASS'Y. NO.	DATE	
1	RTF		2-6-56	



X	3	BS-104	TIN WELD
1	2	PM-396	COUPLING, STOP
1	1	PM-395	STOP

ISSUE	ITEM	CHANGED FROM	DATE	CH. NO.	DRAFTS	CHECKER	ENG. APP.	REQ. ITEM	PART NO.	DESCRIPTION	SYMBOL			
								THE TECHNICAL MATERIEL CORP. MAMARONECK. NEW YORK						
								COUPLING STOP ASSY.						
								PMW/AMP						
								MATERIAL						
								STOCK SIZE						
								TYPE & TEMPER						
								HEAT TREAT. SPEC.						
								DRAWN						
								CHECKED						
								FINAL APPROVAL						
								FINISH & SPEC. NO.						
								ELEC. DES. APP. MECH. DES. APP.						
TOLERANCES			SCALE:					5-105 CAD PLATE .0002		DRAWN		A-1233		
DEC. DIM. ±			MAXIMUM ALLOWABLE TOLERANCES HAVE BEEN DETERMINED AND ANY DEVIATIONS WILL BE CAUSE FOR REJECTION. REMOVE ALL BURRS AND SHARP EDGES					ELEC. DES. APP.		MECH. DES. APP.				
FRAC. DIM. ±														
ANGULAR DIM. ±														

REQ. PER UNIT	USED ON			A-1238
	MODEL	ASS'Y. NO.	DATE	
1	RTF		2-16-56	



SECTION "A-A"

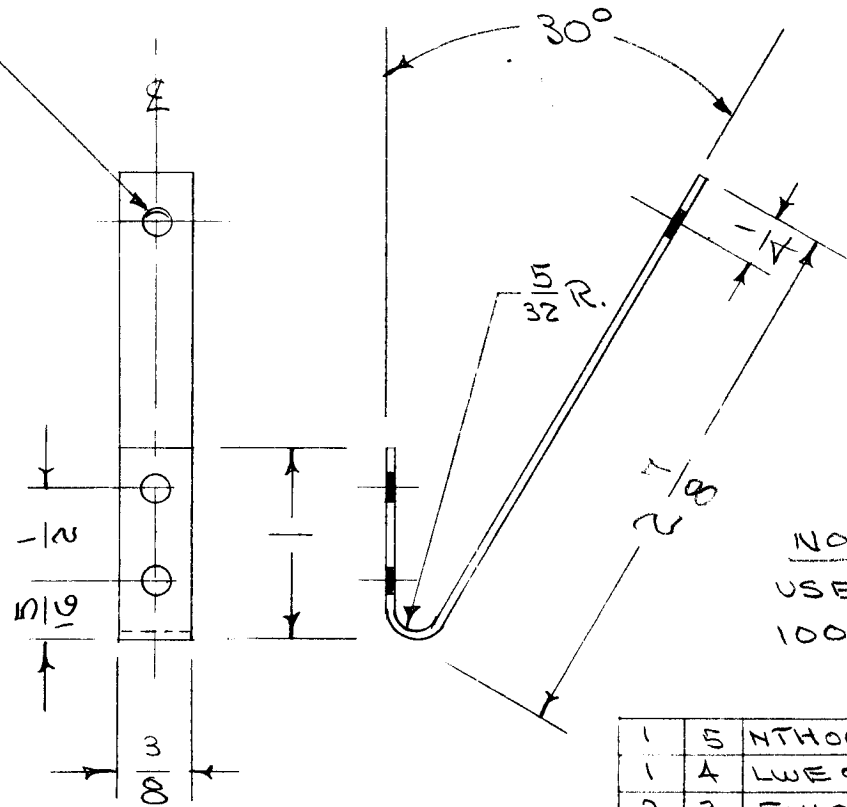
NOTE
USED ONLY ON RTF SERIAL NOS
100-114 INCLUSIVE.

X	3	BS-104	EUTECTIC TIN WELD #1
1	2	TE-135-8	STAND-OFF SP CER
1	1	BB-101	BEARING, PANEL

ISSUE	ITEM	CHANGED FROM	DATE	CH. NO.	DRAFTS	CHECKER	ENG. APP.	REQ. ITEM	PART NO.	DESCRIPTION	SYMBOL
								THE TECHNICAL MATERIEL CORP. MAMARONECK, NEW YORK BUSHING, NEUTRILIZING			
								MATERIAL P/A GPT-750			
								DATE 2-16-56 DRAWN [Signature]			
								CHECKED [Signature]			
								FINAL APPROVAL A-1238			
								ELEC. DES. APP. MECH. DES. APP.			
TOLERANCES DEC. DIM. ± FRAC. DIM. ± ANGULAR DIM. ±								SCALE: MAXIMUM ALLOWABLE TOLERANCES HAVE BEEN DETERMINED AND ANY DEVIATIONS WILL BE CAUSE FOR REJECTION. REMOVE ALL BURRS AND SHARP EDGES			
								FINISH & SPEC. NO.			

REQ. PER UNIT	USED ON			A-1242
	MODEL	ASSY. NO.	DATE	
1	RTF		2-6-56	

$\frac{19}{64}$ (.140) D. 3 REQ.



NOTE
USED ONLY ON RTF SERIAL NOS. 100-114 INCLUSIVE

1	5	NTH0632808	NUT, HEX
1	A	LWE06MRC	WASHER, LOCK
2	3	FW06MRC	" " FLAT
1	2	PM-411	CONTACT, INC. SWITCH
1	1	MS-885	SPRING (NO DRAWING)

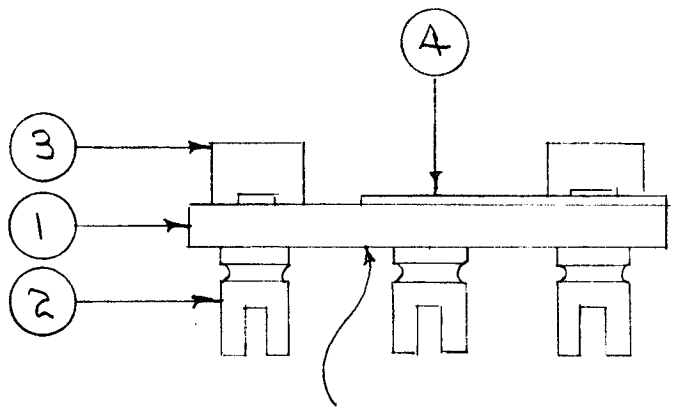
ISSUE	ITEM	CHANGED FROM	DATE	CH. NO.	DRAFTS	CHECKER	ENG. APP.
-	1	DWG. WAS MS-885	3/14/56	-	edd	JAL	WDC

REQ. ITEM	PART NO.	DESCRIPTION	SYMBOL
	.020 THK.	THE TECHNICAL MATERIEL CORP.	
	STOCK SIZE	MAMARONECK. NEW YORK	
	PHOSPHOR BRONZE	CONTACT SPRING, ASSY.	
	MATERIAL	100/AMP	
	SPRING GRADE "A"	edd 2/6/56	JAL
	TYPE & TEMPER	CHECKED	FINAL APPROVAL
	HEAT TREAT. SPEC.	WDC	
	SILVER PLATE .0003	WDC 2/6/56	A-1242
	FINISH & SPEC. NO.	ELEC. DES. APP.	MECH. DES. APP.

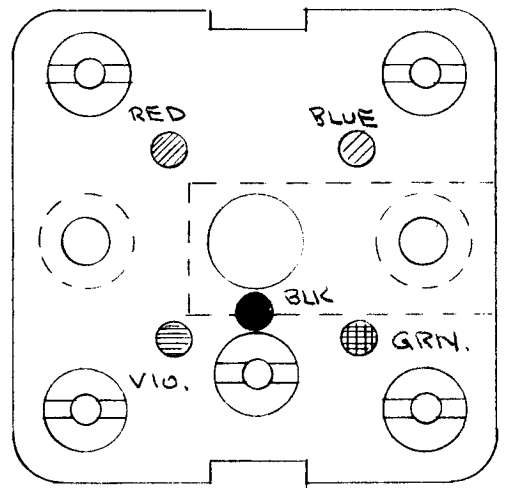
TOLERANCES
DEC. DIM. ±
FRAC. DIM. ± 1/64
ANGULAR DIM. ±

SCALE:
MAXIMUM ALLOWABLE TOLERANCES HAVE BEEN DETERMINED AND ANY DEVIATIONS WILL BE CAUSE FOR REJECTION.
REMOVE ALL BURRS AND SHARP EDGES

REQ. PER UNIT	USED ON			A-1247
	MODEL	ASS'Y. NO.	DATE	
1	FFRD-1,2,3	A-1249	3-15-56	



COLOR CODE ON THIS SIDE

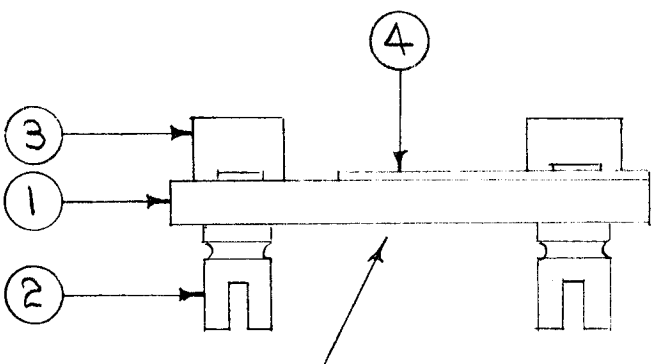


1	4	MS-132	GROUND STRAP
2	3	TE-108-B	STAND OFF
5	2	TE-109-3	TERMINAL LUG.
1	1	PX-334	I.F. TERM. BD.

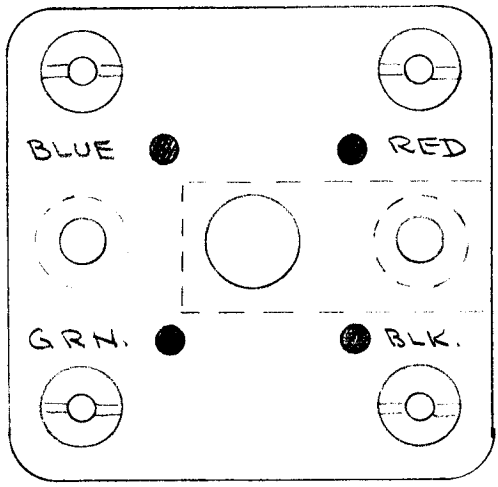
ISSUE	ITEM	CHAN ED FROM	DATE	CH. NO.	DRAFTS	CHECKER	ENG. APP.
TOLERANCES			SCALE:				
DEC. DIM. ±			MAXIMUM ALLOWABLE TOLERANCES HAVE BEEN DETERMINED AND ANY DEVIATIONS WILL BE CAUSE FOR REJECTION.				
FRAC. DIM. ±			REMOVE ALL BURRS AND SHARP EDGES				
ANGULAR DIM. ±							

REQ. ITEM	PART NO.	DESCRIPTION	SYMBOL
STOCK SIZE		THE TECHNICAL MATERIEL CORP. MAMARONECK, NEW YORK	
MATERIAL		I.F. TERM. BD. ASSEMBLY.	
		XTAL FILTER	
TYPE & TEMPER	HEAT TREAT. SPEC.	DRAWN	CHECKED
FINISH & SPEC. NO.		ELEC. DES. APP.	MECH. DES. APP.

REQ. PER UNIT	USED ON			A-1250
	MODEL	ASS'Y. NO.	DATE	
1	FFRD-1-2,3	A-1252	3-16-56	



COLOR CODE ON THIS SIDE

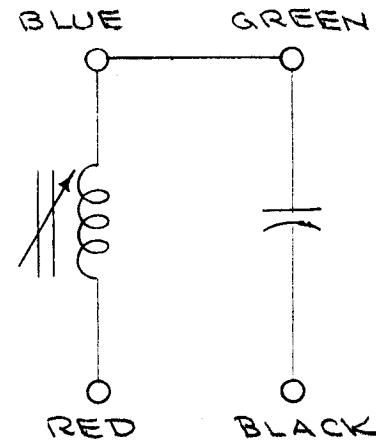
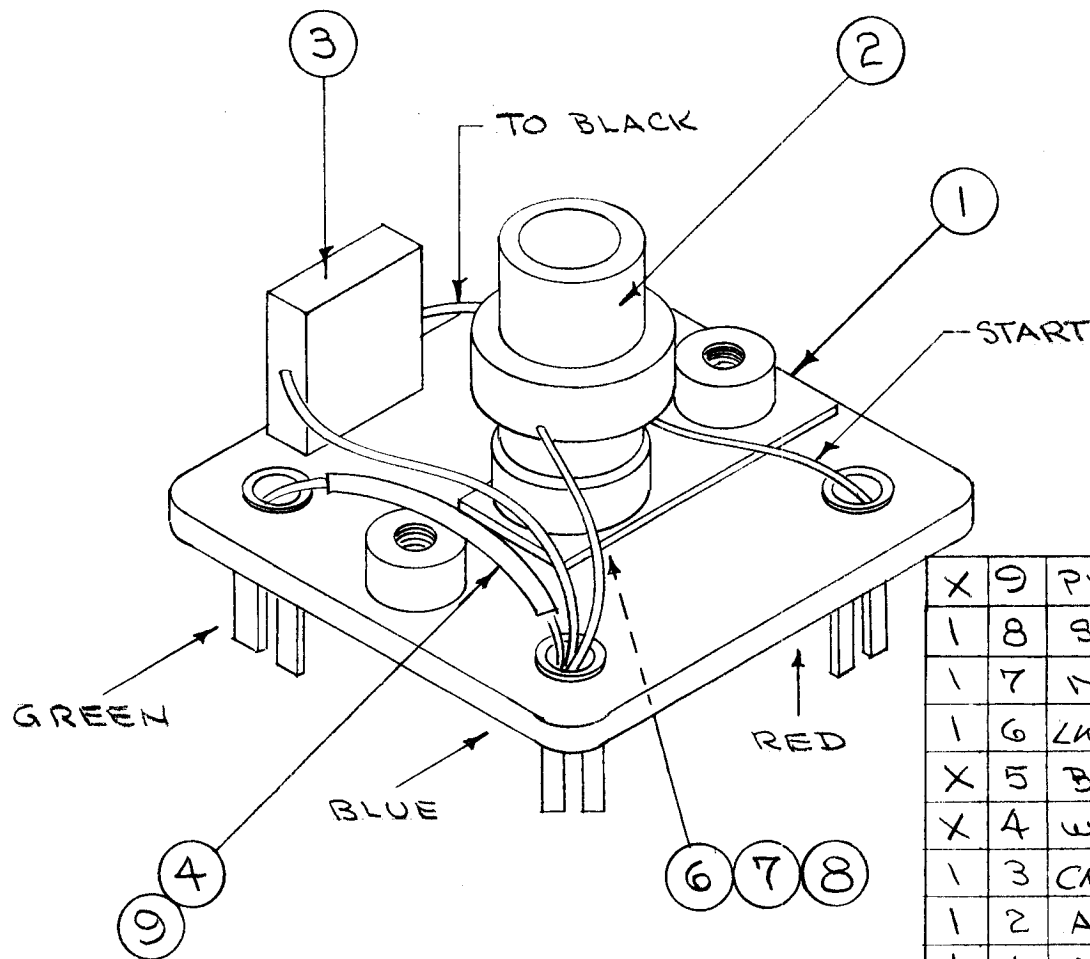


1	4	MS-132	GROUND STRAP
2	3	TE-108-8	STAND OFF
4	2	TE-109-3	TERMINAL LUG
1	1	PX-335	TERMINAL BOARD.

ISSUE	ITEM	CHANGED FROM	DATE	CH. NO.	DRAFTS	CHECKER	ENG. APP.
TOLERANCES			SCALE:				
DEC. DIM. ±			MAXIMUM ALLOWABLE TOLERANCES HAVE BEEN DETERMINED AND ANY DEVIATIONS WILL BE CAUSE FOR REJECTION.				
FRAC. DIM. ±			REMOVE ALL BURRS AND SHARP EDGES				
ANGULAR DIM. ±							

REQ. ITEM	PART NO.	DESCRIPTION	SYMBOL
STOCK SIZE		THE TECHNICAL MATERIEL CORP. MAMARONECK, NEW YORK	
MATERIAL		TERM. BD. ASSY., XTAL FILTER OUTPUT TANK	
TYPE & TEMPER		HEAT TREAT. SPEC.	DRAWN
FINISH & SPEC. NO.		ELEC. DES. APP.	MECH. DES. APP.
		PLK. 3-27-56	WOC A-1250

REQ. PER UNIT	USED ON			A-1252	A
	MODEL	ASS'Y. NO.	DATE		
1	FFRD-1,2,3		3-16-56		



MODEL	SYM ITEM 2	SYM ITEM 3
FFRD-1	L101	C124
-2	L201	C224
-3	L301	C324

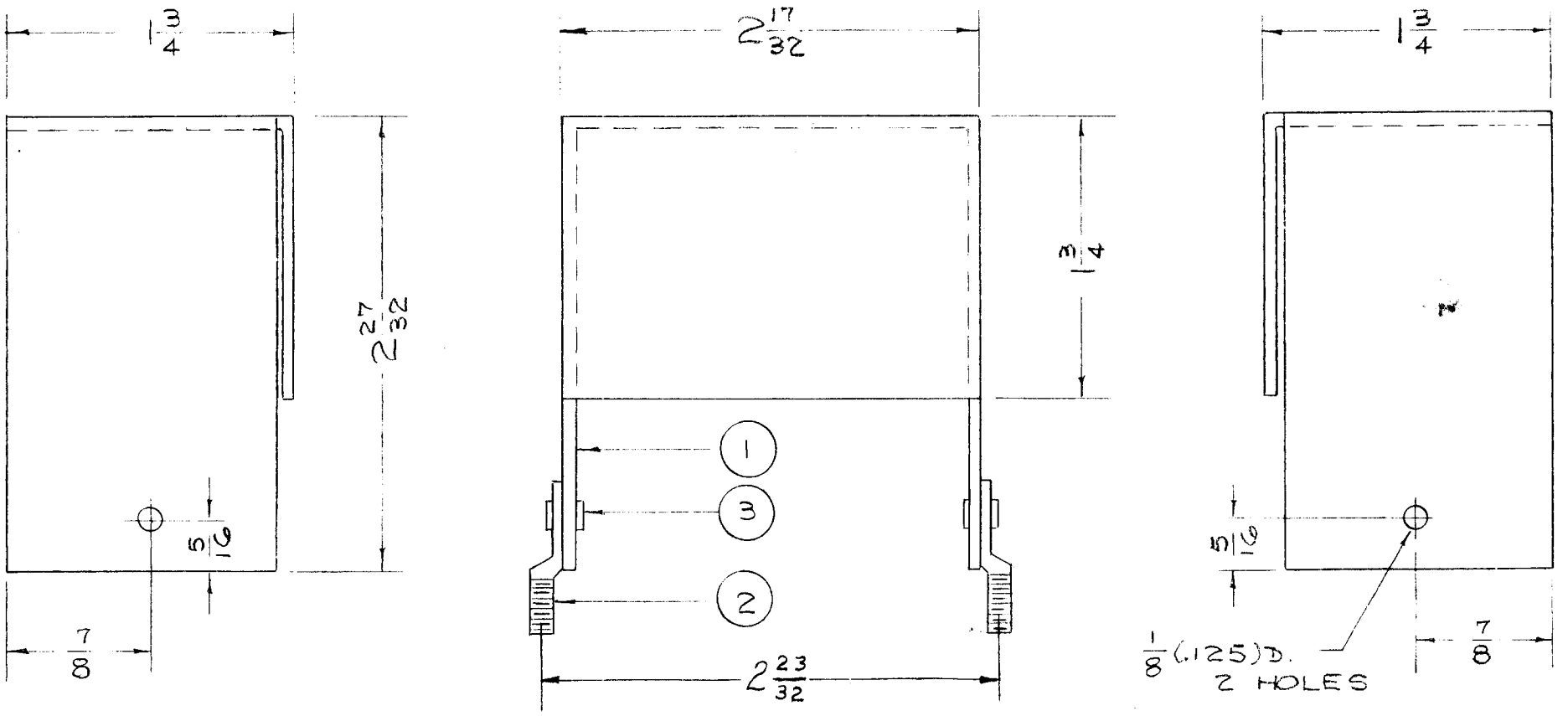
X	9	PX-104-17.022	INSULATION, SLEEVING	
1	8	SP-102	SPRING LOCK	
1	7	NT-102	NUT, HEX	
1	6	LWI 25MRN	WASHER, LOCK	
X	5	BS-100	SOLDER, SOFT	
X	4	WL-100-7	WIRE, BUSS BAR	
1	3	CM20F681G03	CAPACITOR, FIXED	SEE CHART
1	2	A-1251	COIL ASSY.	SEE CHART
1	1	A-1250	TERM. BD. ASSY.	

ISSUE	ITEM	CHANGED FROM	DATE	CH. NO.	DRAFTS	CHECKER	ENG. APP.
A		ITS.3,6P/N CHANGE G	7-13-72	20787	GE	Ch	Ch

TOLERANCES		SCALE:
DEC. DIM. ±		MAXIMUM ALLOWABLE TOLERANCES HAVE BEEN DETERMINED AND ANY DEVIATIONS WILL BE CAUSE FOR REJECTI N. REMOVE ALL BURRS AND SHARP EDGES
FRAC. DIM. ±		
ANGULAR DIM. ±		

REQ. ITEM	PART NO.	DESCRIPTION	SYMBOL
THE TECHNICAL MATERIEL CORP. MAMARONECK. NEW YORK			
STOCK SIZE			
XTAL FILTER ASSY., OUTPUT TANK			
MATERIAL			
		CDD ³ /16/176	PLK 4-9-56
TYPE & TEMPER		HEAT TREAT. SPEC.	
FINISH & SPEC. N .		ELEC. DES. APP. MECH. DES. APP.	
		DRAWN	
		CHECKED	
		FINAL APPROVAL	
		A. J. J.	
		A-1252	
		A	

REQ. PER UNIT	E-500-P		USED ON		A-1261	C
	MODEL	ASS'Y. NO.	DATE			
1	A-559		3-30-56			



2	3	EY-100-2	EYELET, FLAT FLANGE	
2	2	SC-107-1	SPADE LUG	
1	1	MS-916	JACK COVER (NO DWG)	

ISSUE	ITEM	CHANGED FROM	DATE	CH. NO.	DRAFTS	CHECKER	ENG. APP.
C	1	S404 - IRIDITE WAS 8101 - CAUSTIC DIP	12-7-59	1001	P		EMN
B	1	2 23/32 ADDED	3-8-57	2	SC.	<i>JWC</i>	<i>EMN</i>
A	1	ITEM 3 WAS EY-100-1	4-22-56	1	CD	<i>JWC</i>	<i>EMN</i>

REQ. ITEM	PART NO.	DESCRIPTION	SYMBOL
	.051	THE TECHNICAL MATERIEL CORP. MAMARONECK, NEW YORK	
	ALUMINUM	JACK COVER ASSY.	
	5052-H32	3-30-56	<i>EMN</i>
	S404-IRIDITE		<i>JWC</i>
	FINISH & SPEC. NO.	ELEC. DES. APP.	MECH. DES. APP.

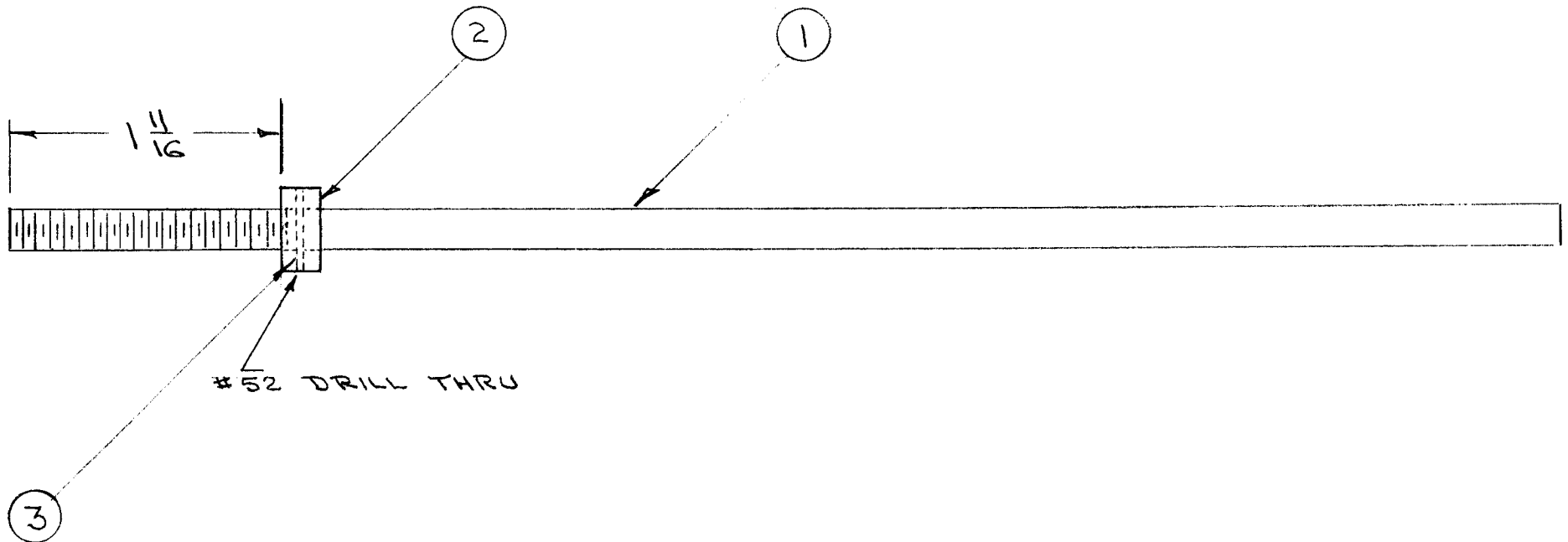
TOLERANCES

DEC. DIM. ±
FRAC. DIM. ± 1/64
ANGULAR DIM. ±

SCALE:

MAXIMUM ALLOWABLE TOLERANCES HAVE BEEN DETERMINED AND ANY DEVIATIONS WILL BE CAUSE FOR REJECTION.
REMOVE ALL BURRS AND SHARP EDGES

REQ. PER UNIT	USED ON			A-1276
	MODEL	ASS'Y. N .	DATE	
1	RTF		4/27/56	



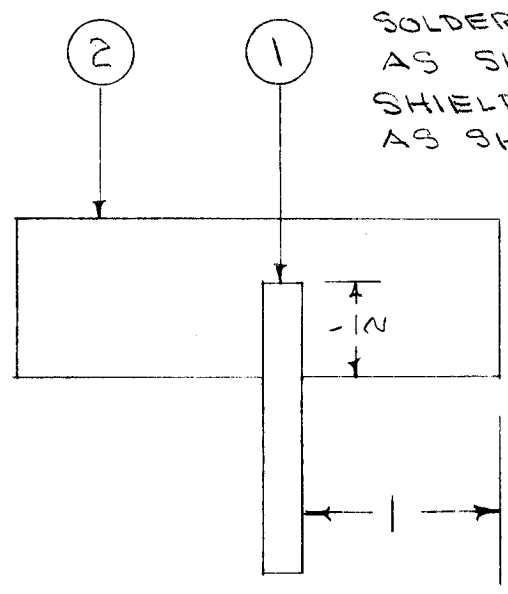
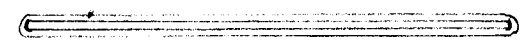
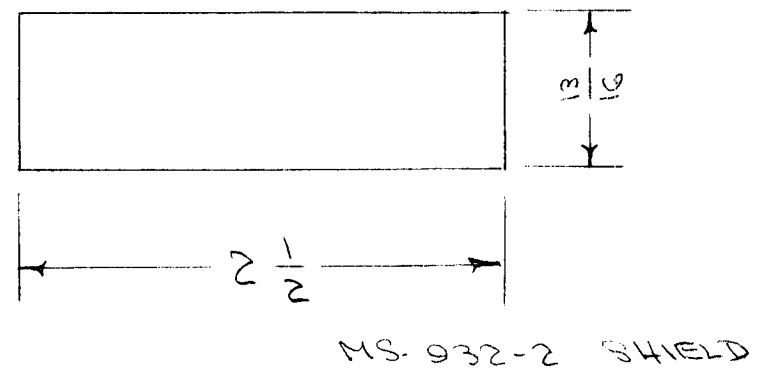
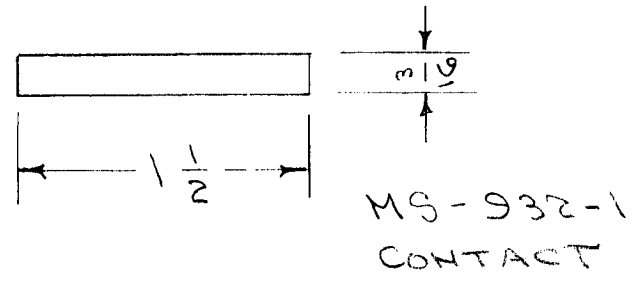
1	3	PN-109-2	ROLL PIN	
1	2	PM-414	COLLAR, HELICAL GEAR SHAFT	
1	1	PM-362	SHAFT, HELICAL GEAR	
REQ. ITEM		PART NO.	DESCRIPTION	SYMBOL

ISSUE	ITEM	CHANGED FROM	DATE	CH. NO.	DRAFTS	CHECKER	ENG. APP.

STOCK SIZE		THE TECHNICAL MATERIEL CORP. MAMARONECK. NEW YORK		
MATERIAL		HELICAL GEAR SHAFT ASSY RTF GPT-750		
TYPE & TEMPER	HEAT TREAT. SPEC.	DRAWN	CHECKED	FINAL APPROVAL
		<i>Jack</i>	<i>alt</i>	<i>W</i>
FINISH & SPEC. NO.		ELEC. DES. APP.	MECH. DES. APP.	A-1276

TOLERANCES		SCALE:
DEC. DIM. ±		MAXIMUM ALLOWABLE TOLERANCES HAVE BEEN DETERMINED AND ANY DEVIATIONS WILL BE CAUSE FOR REJECTI N.
FRAC. DIM. ±		REMOVE ALL BURRS AND SHARP EDGES
ANGULAR DIM. ±		

REQ. PER UNIT	480		USED ON		A-1289
	MODEL	ASS'Y. NO.	DATE		
1	TRC-100	A-1289	5-9-56		



SOLDER CONTACT IN PLACE AS SHOWN. COVER SHIELD WITH 1" TAPE AS SHOWN ABOVE.

X	4	TA-108-7	TAPE
X	3	BS-100	SOLDER, SOFT
1	2	MS-932-2	SHIELD (NO DRAWING)
1	1	MS-932-1	CONTACT (NO ")

ISSUE	ITEM	CHANGED FROM	DATE	CH. NO.	DRAFTS	CHECKER	ENG. APP.

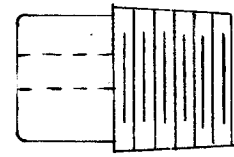
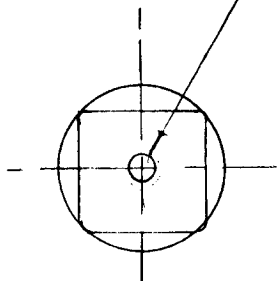
REQ. ITEM	PART NO.	DESCRIPTION	SYMBOL
	.002	THE TECHNICAL MATERIEL CORP.	
	STOCK SIZE	MAMARONECK. NEW YORK	
	BRASS	SHIELD ASSEMBLY	
	MATERIAL	TRC-100	
SWIM STOCK		DRAWN	CHECKED
		APB	WJ
		ELEC. DES. APP.	MECH. DES. APP.
			AJJ
			A-1289

TOLERANCES	SCALE:	480
DEC. DIM. ±	MAXIMUM ALLOWABLE TOLERANCES HAVE BEEN DETERMINED AND ANY DEVIATIONS WILL BE CAUSE FOR REJECTION.	
FRAC. DIM. ± 1/32	REMOVE ALL BURRS AND SHARP EDGES	
ANGULAR DIM. ±		

STANDARD DRAWING

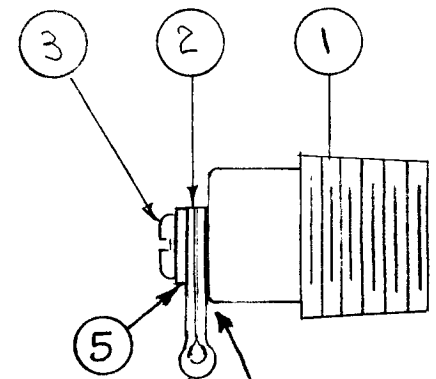
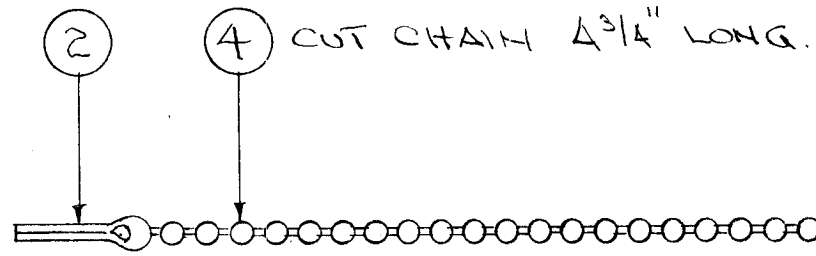
REQ. PER UNIT	USED ON			A-1291	D
	MODEL	ASS'Y. NO.	DATE		
	1 BAC-1				
I	BAC-1-S-20				

#A3 (.089) DIA X 1/4 DEEP



ASSEMBLE AS BELOW

DRILL & TAP AS ABOVE



CHAIN MUST BE FREE TURNING.

1	5	FW04HBN	FLAT WASHER
1 3/4"	4	CJ-100-2	BEAD CHAIN
1	3	SFB0440AWS	SCREW, THD. CUTTING
2	2	MS-105-1-S	COUPLING
1	1	SC-13A	PIPE PLUG

D	1	Item 5 Was FW04MRC	11-14-61	5856	LB	LB	LB
C	1	FW04MRC ADDED	3-12-57	3	sc.	LB	MB
B	1	HOLE WAS 440 TAP. ITEM 3 WAS SCB50440BEN	10/19/56	2	COB	MB	MB
A	1	ITEM 1 WAS SC-133-HH 3716008	9/28/56	1	COB	MB	MB

REQ. ITEM	PART NO.	DESCRIPTION	SYMBOL
		THE TECHNICAL MATERIEL CORP. MAMARONECK, NEW YORK	
STOCK SIZE		DRAIN PLUG ASSEMBLY.	
MATERIAL			
TYPE & TEMPER HEAT TREAT. SPEC.		DRAWN	CHECKED
FINISH & SPEC. N .		ELEC. DES. APP.	MECH. DES. APP.

TOLERANCES

SCALE:

REC. DIM. ±
FRAC. DIM. ± 1/64
ANGULAR DIM. ±

MAXIMUM ALLOWABLE TOLERANCES HAVE BEEN DETERMINED AND ANY DEVIATIONS WILL BE CAUSE FOR REJECTION.
REMOVE ALL BURRS AND SHARP EDGES

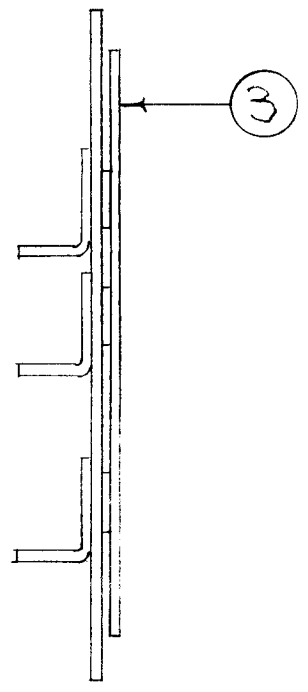
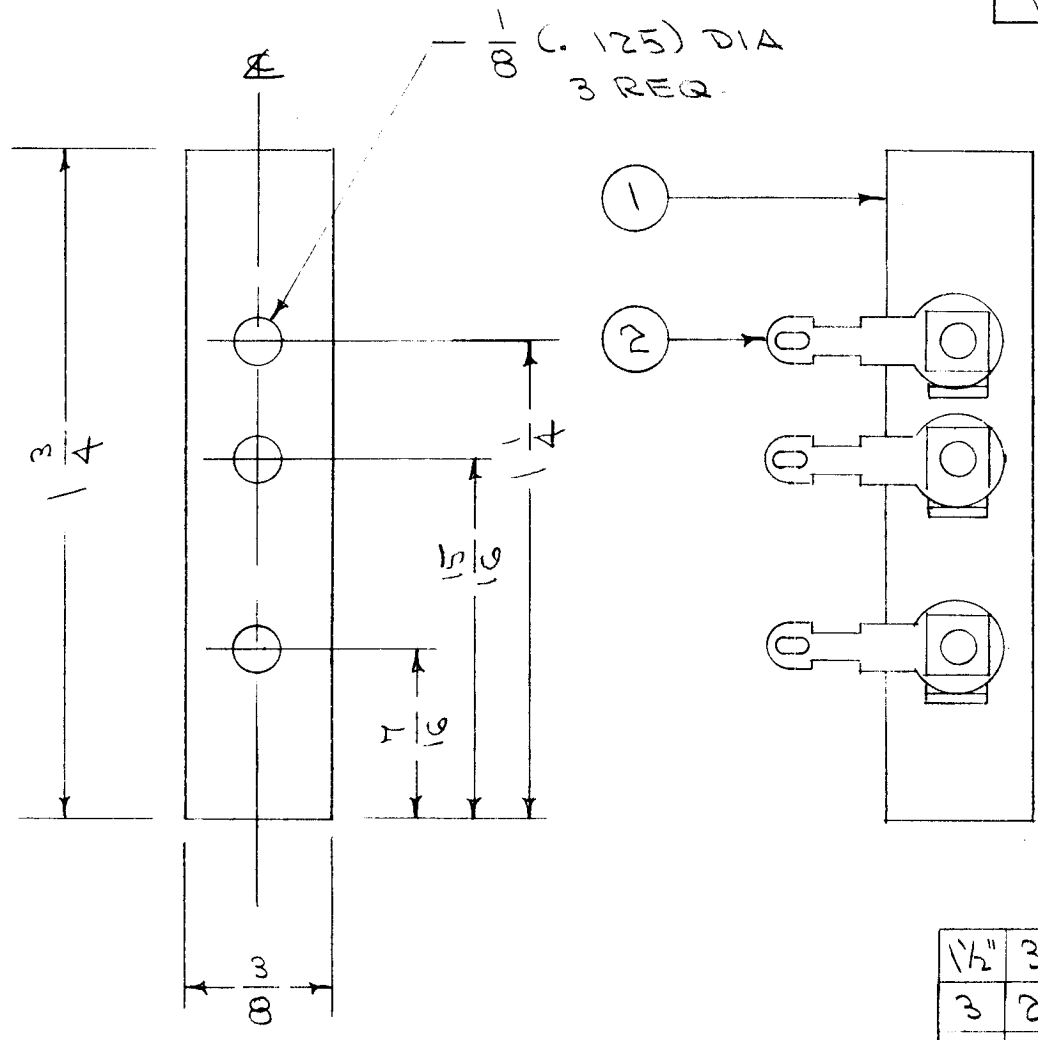
COB 5/10/56

MB

FINAL APPROVAL

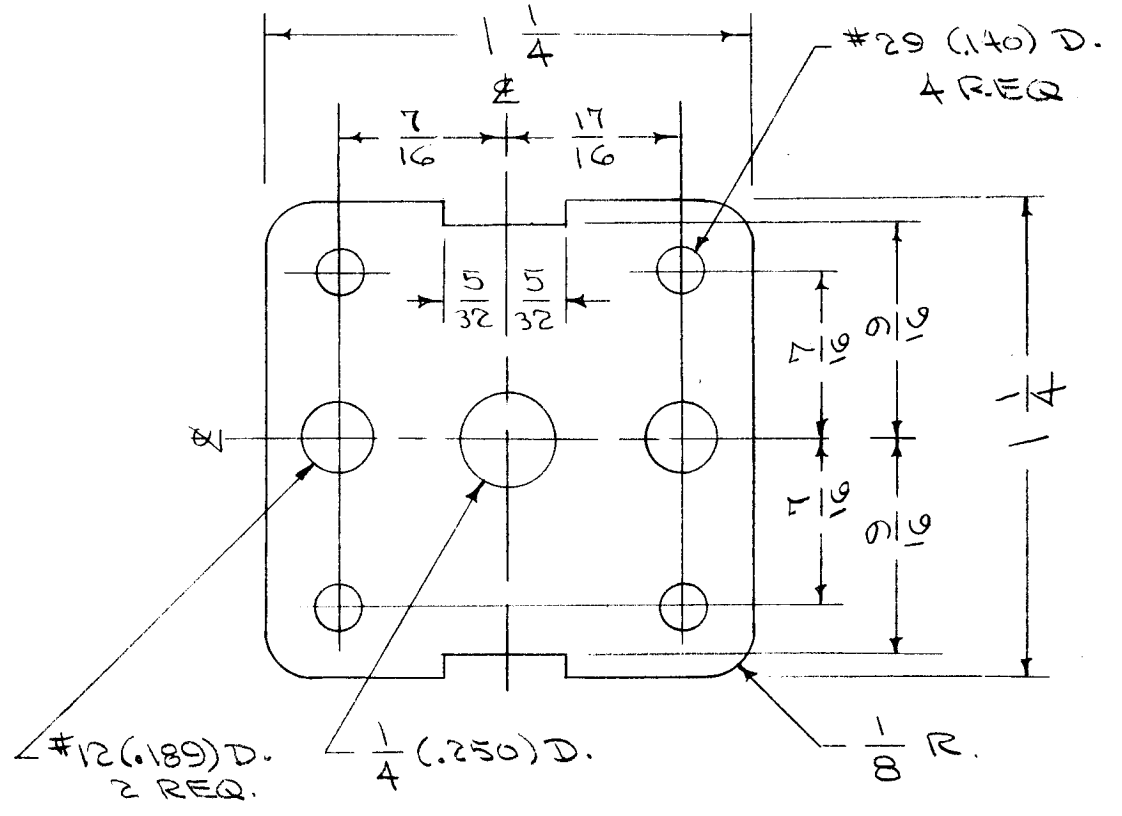
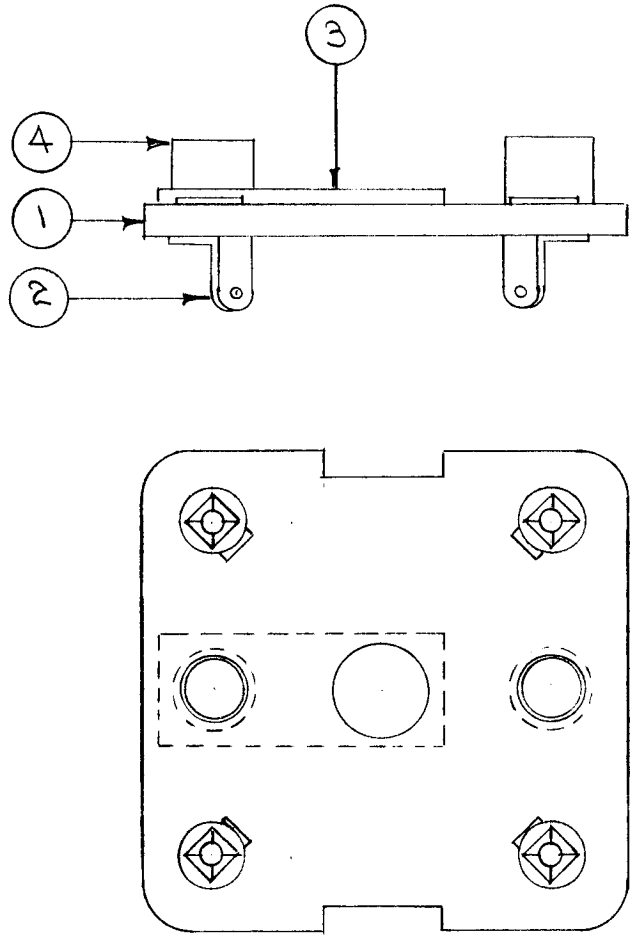
A-1291 D

REQ. PER UNIT	459		USED ON		A-1294
	MODEL	ASS'Y. NO.	DATE		
1	GSB-1	A-1295	5-18-56		



REQ. ITEM	PART NO.	DESCRIPTION	SYMB L
1/2" 3	TA-102-2	TAPE	
3 2	TE-144	TERMINAL	
1 1	TM-119	TERM. STRIP (NO DWG.)	
.015 THK.		THE TECHNICAL MATERIEL CORP.	
STOCK SIZE		MAMARONECK. NEW YORK	
FISH PAPER		TERMINAL STRIP ASSY.	
MATERIAL		TOROID. GSB-1	
TOLERANCES		SCALE:	
DEC. DIM. ±		MAXIMUM ALLOWABLE TOLERANCES HAVE BEEN DETERMINED AND ANY DEVIATIONS WILL BE CAUSE FOR REJECTION.	
FRAC. DIM. ± Y64		REMOVE ALL BURRS AND SHARP EDGES	
ANGULAR DIM. ±			
TYPE & TEMPER		DRAWN	
HEAT TREAT. SPEC.		CHECKED	
FINISH & SPEC. NO.		ELEC. DES. APP. MECH. DES. APP.	
		ODD. 5/18/56	
		HHT	
		A-1294	

REQ. PER UNIT	.455 USED ON			A-1297
	MODEL	ASS'Y. NO.	DATE	
1	G5B-1	A-1300	5-11-56	



2	4	TE-108-6	STANDOFF
1	3	MS-132	GROUND STRAP
4	2	TE-151	LUG
1	1	PX-338	TERMINAL BD. (NO DWG.)

ISSUE	ITEM	CHANGED FROM	DATE	CH. NO.	DRAFTS	CHECKER	ENG. APP.
TOLERANCES			SCALE:				
DEC. DIM. ±			MAXIMUM ALLOWABLE TOLERANCES HAVE BEEN DETERMINED AND ANY DEVIATIONS WILL BE CAUSE FOR REJECTION. REMOVE ALL BURRS AND SHARP EDGES				
FRAC. DIM. ± 1/64							
ANGULAR DIM. ±							

REQ. ITEM	PART NO.	DESCRIPTION	SYMBOL
1/16 THK		THE TECHNICAL MATERIEL CORP. MAMARONECK, NEW YORK	
STOCK SIZE			
PHENOLIC			
MATERIAL		TERMINAL BD. ASSY.	
XXX LAMINATE		438 & 472 KC. OSC. G5B-1	
TYPE & TEMPER		HEAT TREAT. SPEC.	DRAWN
FINISH & SPEC. NO.		ELEC. DES. APP.	MECH. DES. APP.
		###	2B
			A-1297