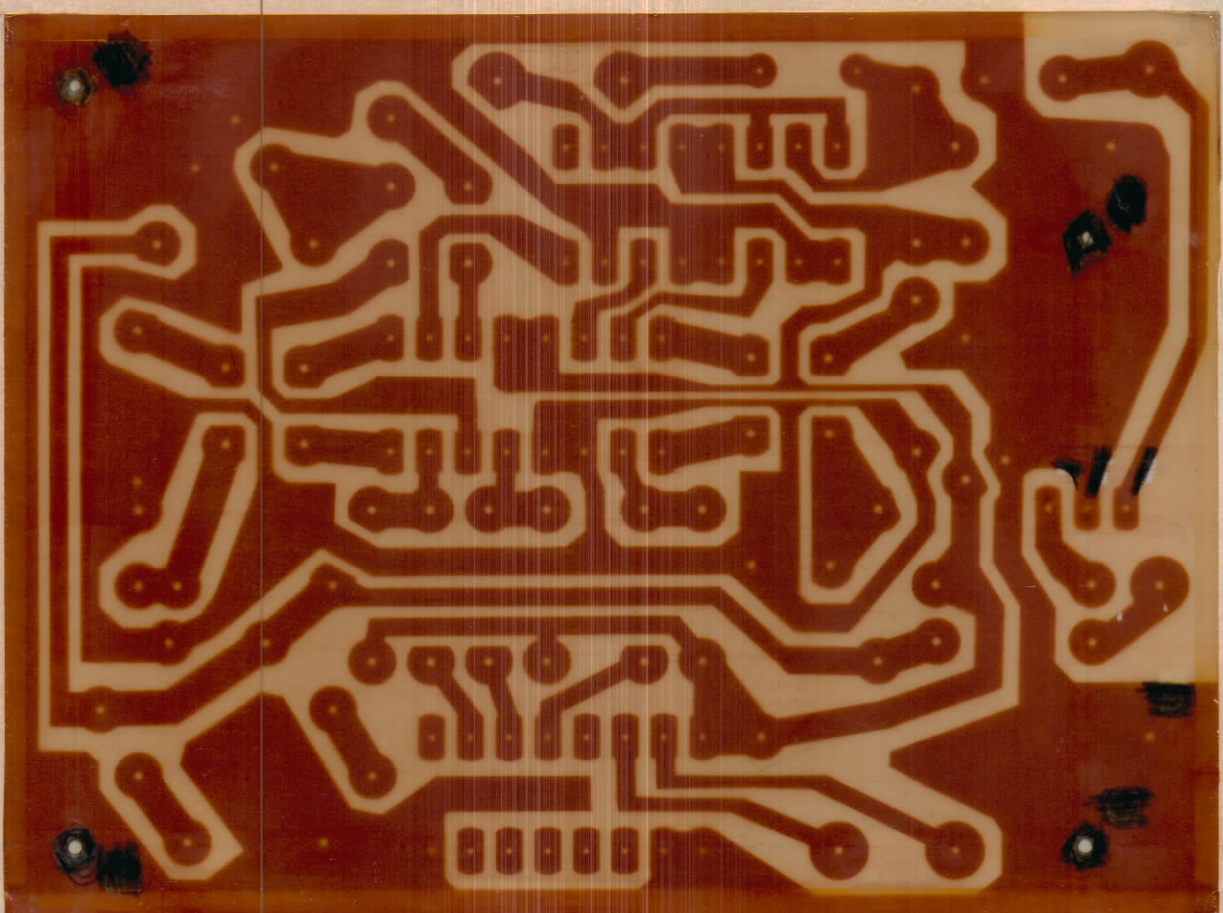


REQ.	ITEM	PART NO.	DESCRIPTION	SYMBOL
------	------	----------	-------------	--------

IF IT IS FOUND DESIRABLE TO CHANGE ANY TOLERANCE OR OTHER DETAIL SPECIFIED ON THIS DRAWING NOTIFY THE PURCHASER PROMPTLY.		DIMENSIONS IN INCHES UNLESS OTHERWISE SPECIFIED					
MAXIMUM ALLOWABLE TOLERANCES HAVE BEEN DETERMINED AND DEVIATIONS WILL BE CAUSE FOR REJECTION. REMOVE ALL BURRS AND SHARP EDGES.							
ISSUE	ITEM	CHANGED FROM	DATE	CN. NO.	DRAFTS	CHECKER	ENG. APP.
0		PROD RELEASE	8 AUG 73		MAF	YFL	

REDUCE TO 3.500
BETWEEN TRAMMEL POINTS



A11053-1 ∅

REVISIONS

NO.	DATE	DESCRIPTION
1	8/25/72	INITIAL DESIGN
2	8/25/72	REVISED
3	8/25/72	REVISED
4	8/25/72	REVISED
5	8/25/72	REVISED
6	8/25/72	REVISED
7	8/25/72	REVISED
8	8/25/72	REVISED
9	8/25/72	REVISED
10	8/25/72	REVISED

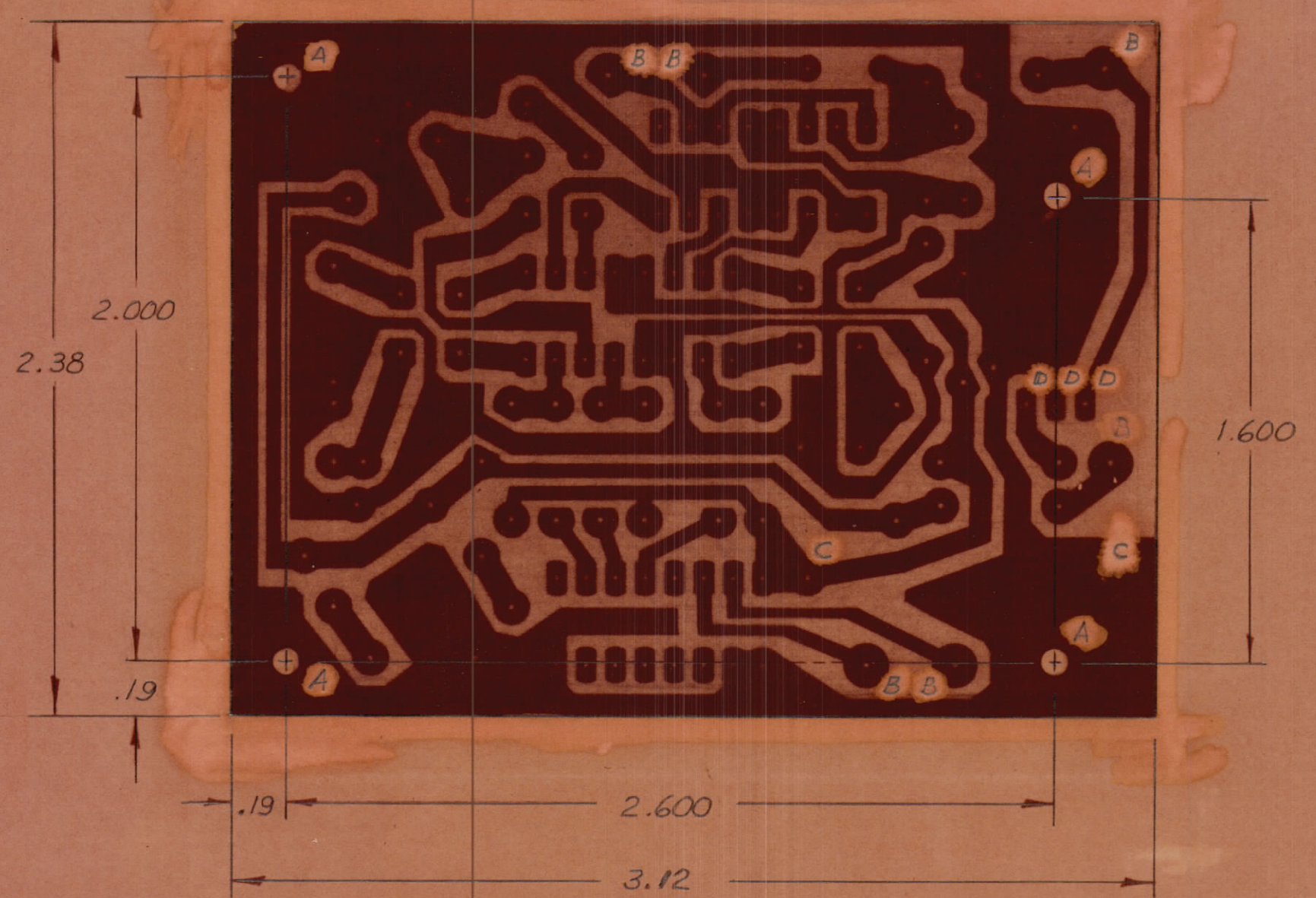
STOCK SIZE		TMC (Canada) LIMITED OTTAWA ONTARIO	
MATERIAL		PC BOARD ETCHING	
WEIGHT PER PC.		MAJOR LOOP V.C.O.	
TYPE & TEMPER		MAFLYNN	
DRAWN		ELEC. DES. APP.	MECH. DES. APP.
HEAT TREAT. SPEC.		Y.F. LEE	
CHECKED		FINAL APPROVAL	
FINISH & SPEC. NO.		SHEET 2 OF 5	A11053-1 ∅

MMX () 3	110/71	A11053-5	25 AUG 72
MODEL	PROJECT NO.	ASSY. NO.	DATE
USED ON			

TOLERANCES		SCALE: 2:1
ALL OTHERS	DEC. DIM. ± .X*.05 FRAC. DIM. ± 1/64 ANGULAR DIM. ± 0° 30'	DRILL, PUNCH, COMMERCIAL STOCK SIZES AND MANUFACTURERS TOLERANCES ARE NOT INCLUDED.

IF IT IS FOUND DESIRABLE TO CHANGE ANY TOLERANCE OR OTHER DETAIL SPECIFIED ON THIS DRAWING NOTIFY THE PURCHASER PROMPTLY.		DIMENSIONS IN INCHES UNLESS OTHERWISE SPECIFIED.					
MAXIMUM ALLOWABLE TOLERANCES HAVE BEEN DETERMINED AND DEVIATIONS WILL BE CAUSE FOR REJECTION. REMOVE ALL BLURS AND SHARP EDGES.							
ISSUE	ITEM	CHANGED FROM	DATE	CH. NO.	DRAFTS	CHECKER	ENG. APP.
0		PROD. RELEASE	8 AUG 73		MAF	YFL	

REQ.	ITEM	PART NO.	DESCRIPTION	SYMBOL
------	------	----------	-------------	--------



HOLE	DESCRIPTION	QTY
A	.140 DIA	4
B	.081 DIA	6
C	.052 DIA	2
D	.047 DIA	3
UNMARKED	.037 DIA	~

A11053-2 \emptyset

3. FINISH : TIN-LEAD PLATE .0003 THK MIN.
 2. MATERIAL : EPOXY GLASS LAMINATE G10 FL-GE-.062-C2/0.
 1. BOARD TO BE IN ACCORDANCE WITH TMC SPEC S-735.
 NOTES: ~

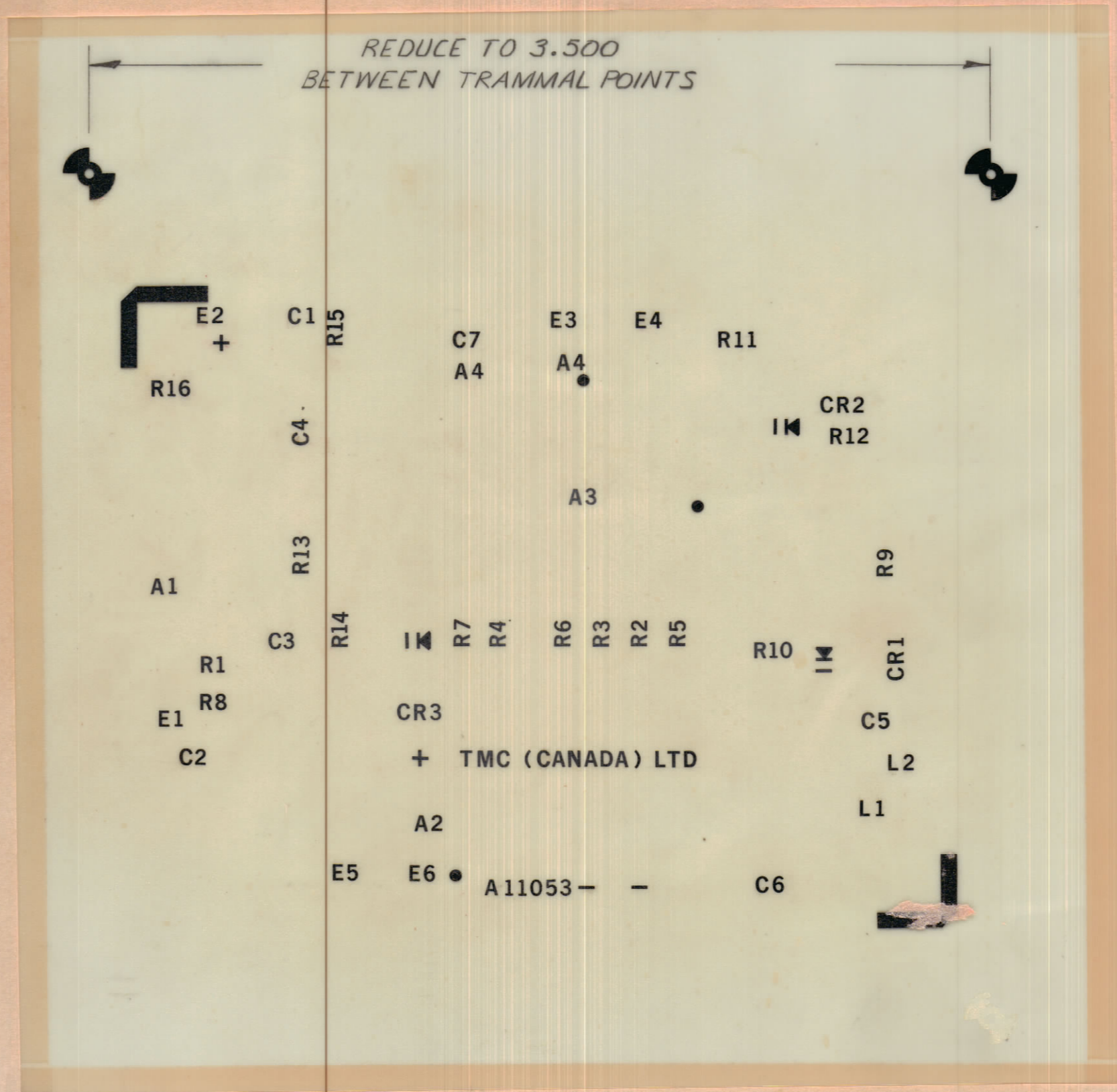
STOCK SIZE		TMC (Canada) LIMITED OTTAWA ONTARIO	
MATERIAL		PC BOARD MACH. MAJOR LOOP V.C.O.	
TYPE & TEMPER		MAFLYNN	
HEAT TREAT SPEC		Y.F. LEE	
FINISH & SPEC. NO.		SHEET 2 of 5 A11053-2 \emptyset	

TOLERANCES		SCALE	2:1
ALL OTHERS	DEC DIM. - .1 FRAC DIM. - 1/64 ANGULAR DIM. - 0° 30'	DRILL, PUNCH, COMMERCIAL STOCK SIZES AND MANUFACTURERS TOLERANCES ARE NOT INCLUDED.	

MMX () 3	110/71	A11053-5	25 AUG 72
MODEL	PROJECT NO.	ASSY NO.	DATE

IF IT IS FOUND DESIRABLE TO CHANGE ANY TOLERANCE OR OTHER DETAIL SPECIFIED ON THIS DRAWING NOTIFY THE PURCHASER PROMPTLY.		DIMENSIONS IN INCHES UNLESS OTHERWISE SPECIFIED					
MAXIMUM ALLOWABLE TOLERANCES HAVE BEEN DETERMINED AND DEVIATIONS WILL BE CAUSE FOR REJECTION. REMOVE ALL BURRS AND SHARP EDGES.							
ISSUE	ITEM	CHANGED FROM	DATE	CN. NO.	DRAFTS	CHECKER	ENG. APP.
Ø		PROD RELEASE	8 AUG 73		MAF	YFL	

REG.	ITEM	PART NO.	DESCRIPTION	SYMBOL
------	------	----------	-------------	--------



A11053-3 Ø

NOTES:
 1. WHITE EPOXY PAINT
 2. LETTERING PER TMC SPEC S-735.

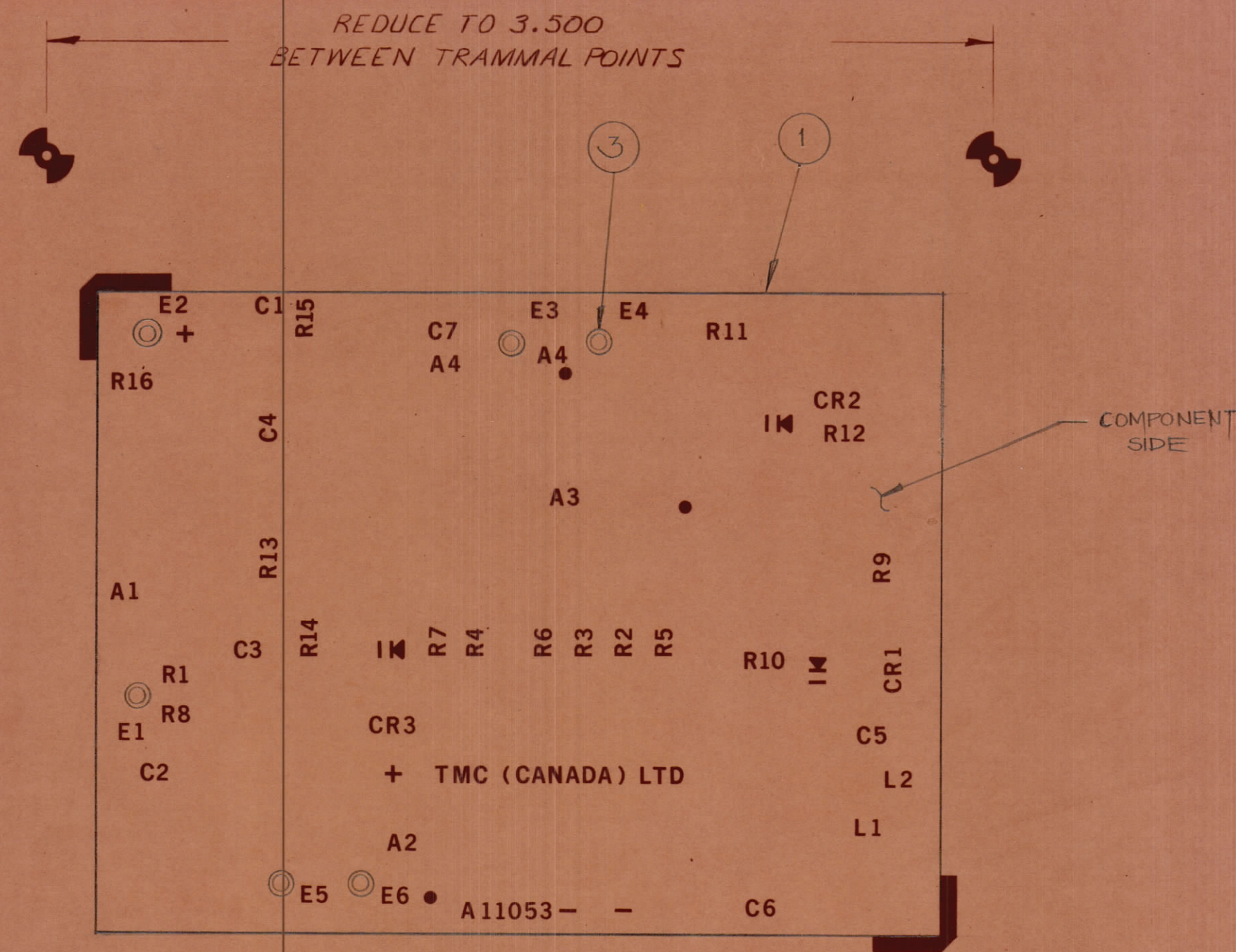
TOLERANCES		SCALE: 2:1
ALL OTHERS	DEC. DIM. ± .XX ± .05 FRAC. DIM. ± 1/64 ± .XX ± .01 ANGULAR DIM. ± 0° 30' ± .XXX ± .005	DRILL, PUNCH, COMMERCIAL STOCK SIZES AND MANUFACTURERS TOLERANCES ARE NOT INCLUDED.

MMX () 3	110/71	A11053-5	28 AUG 72
MODEL	PROJECT NO.	ASSY. NO.	DATE

STOCK SIZE		TMC (Canada) LIMITED OTTAWA ONTARIO	
MATERIAL		P.C. BOARD LETTERING MAJOR LOOP V.C.O.	
WEIGHT PER PC.		MAFLYNN	
TYPE & TEMPER		DRAWN	ELEC. DES. APP.
HEAT TREAT. SPEC.		YF LEE	MECH. DES. APP.
FINISH & SPEC. NO.		CHECKED	FINAL APPROVAL
		SHEET 3 of 5 A11053-3 Ø	

IF IT IS FOUND DESIRABLE TO CHANGE ANY TOLERANCE OR OTHER DETAIL SPECIFIED ON THIS DRAWING NOTIFY THE PURCHASER PROMPTLY		DIMENSIONS IN INCHES UNLESS OTHERWISE SPECIFIED					
MAXIMUM ALLOWABLE TOLERANCES HAVE BEEN DETERMINED AND DEVIATIONS WILL BE CAUSE FOR REJECTION REMOVE ALL BURRS AND SHARP EDGES							
ISSUE	ITEM	CHANGED FROM	DATE	CN NO	DRAFTS	CHECKER	ENG APP
Ø		PROD RELEASE	28 AUG 73		MAF	YFL	

REQ	ITEM	PART NO	DESCRIPTION	SYMBOL
1	1	A11053-3	P.C. BOARD LETTERING	
	2			
6	3	TE127-2	STUD, TERMINAL	E1-E6



A11053-4 Ø

TOLERANCES		SCALE	2:1
DEC DIM	XX ØB	DRILL, PUNCH, COMMERCIAL STOCK	
FRACTIONAL DIM	XX ØC	SIZES AND MANUFACTURERS	
ANGULAR DIM	XX ØD	TOLERANCES ARE NOT INCLUDED	

MMX () 3	110/71	A11053-5	28 AUG 72
MODEL	PROJECT NO	ASSY NO	DATE
USED ON			

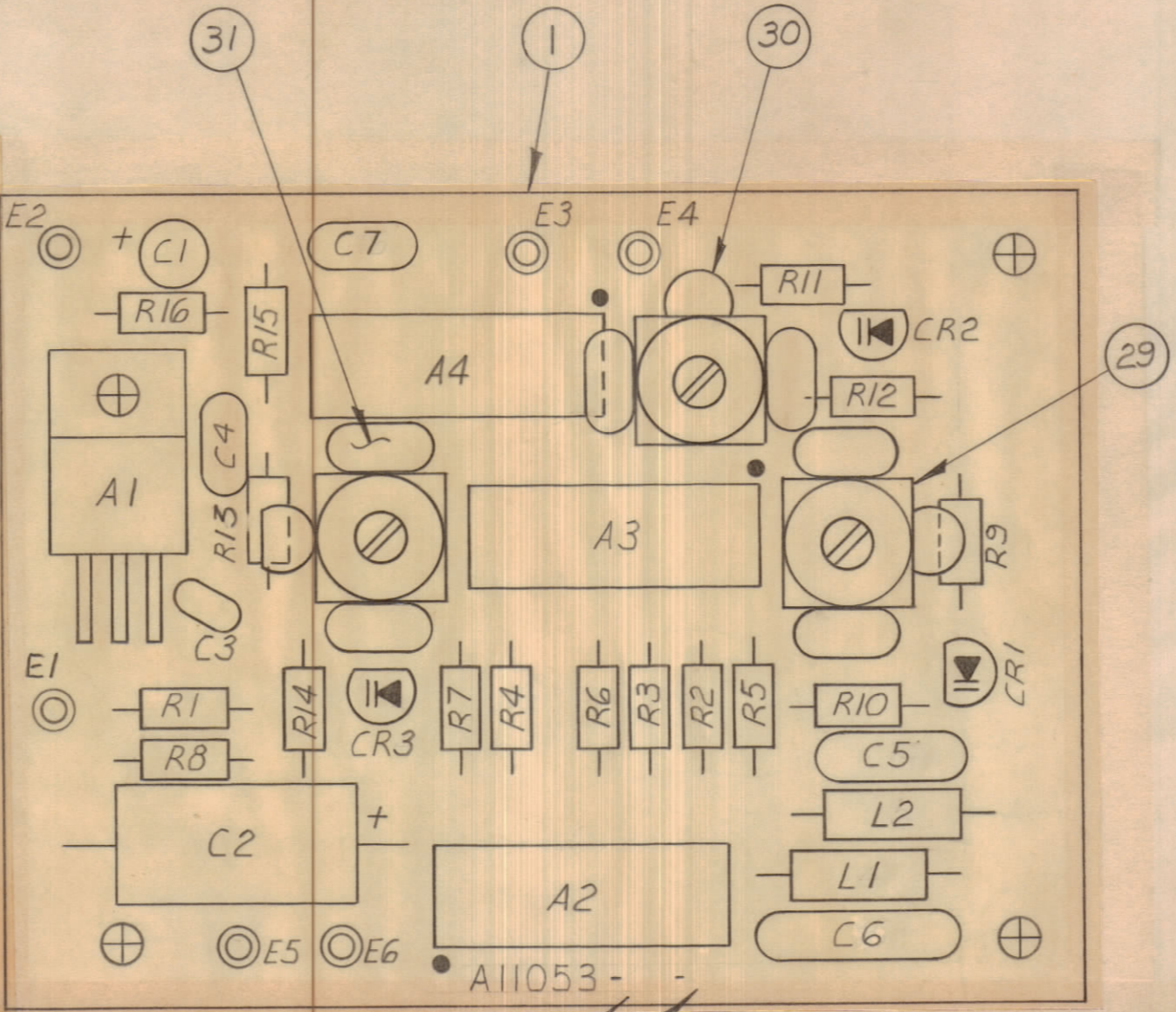
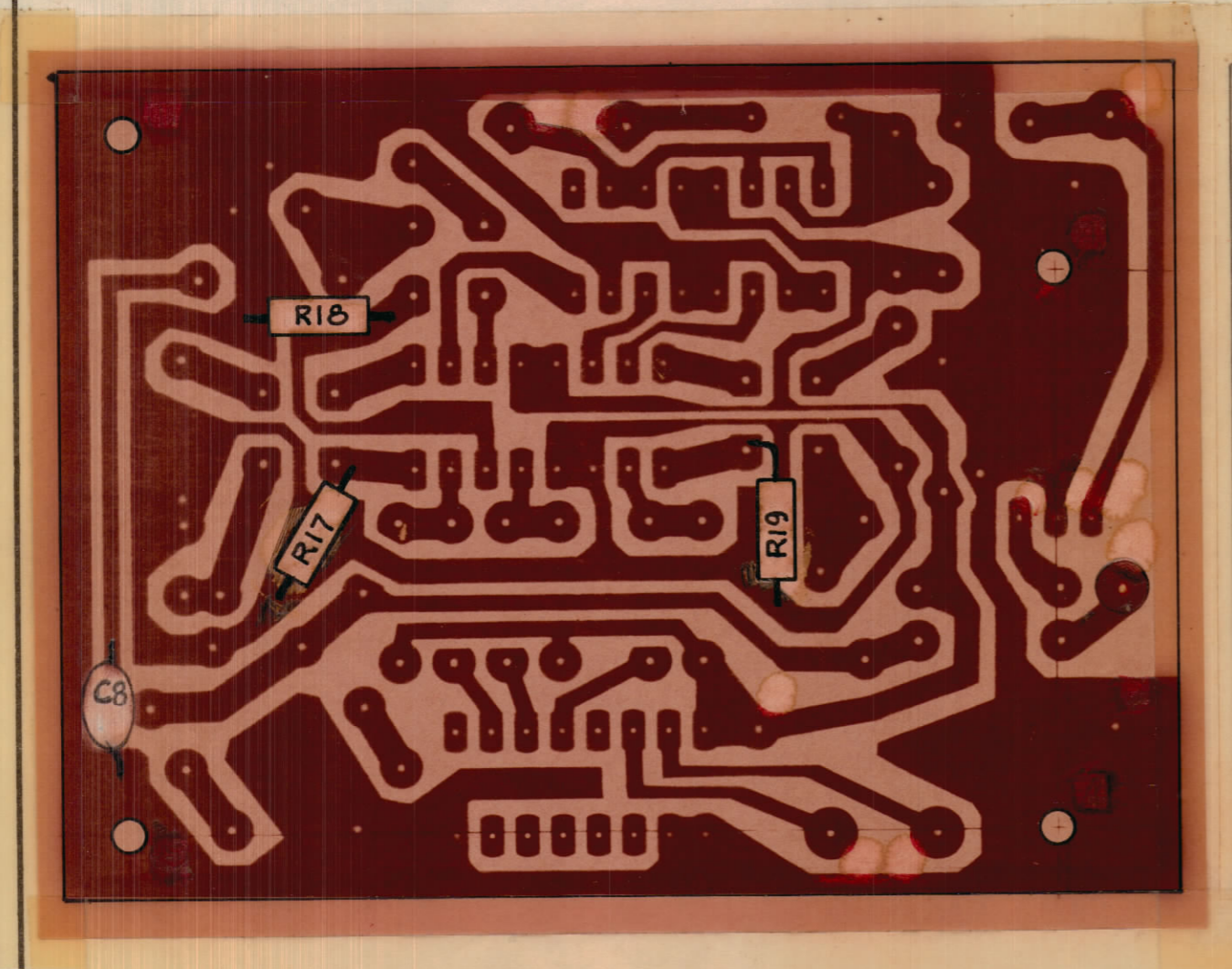
TMC (Canada) LIMITED OTTAWA ONTARIO			
P.C. BOARD SUB-ASSY MAJOR LOOP V.C.O.			
MATERIAL		WEIGHT PER PC	
TYPE & TEMPER		DRAWN	
HEAT TREAT SPEC		CHECKED	
FINISH & SPEC. NO		FINAL APPROVAL	
		MAFLYNN YF LEE	
		SHEET 4 OF 5 A11053-4 Ø	

IF IT IS FOUND DESIRABLE TO CHANGE ANY TOLERANCE OR OTHER DETAIL SPECIFIED ON THIS DRAWING NOTIFY THE PURCHASER PROMPTLY.		DIMENSIONS IN INCHES UNLESS OTHERWISE SPECIFIED					
MAXIMUM ALLOWABLE TOLERANCES HAVE BEEN DETERMINED AND DEVIATIONS WILL BE CAUSE FOR REJECTION. REMOVE ALL BURRS AND SHARP EDGES.							
ISSUE	ITEM	CHANGED FROM	DATE	CN. NO.	DRAFTS	CHECKER	ENG. APP.
Ø		PROD. RELEASE	8 AUG 73		MAF	YFL	

NO.	REQ'D	-5	ITEM	PART NO.	DESCRIPTION	USED ON	REMARKS
				A11053-1	PC BOARD, ETCHING	A11053-2	
				A11053-2	PC BOARD, MACHINING	A11053-3	
				A11053-3	PC BOARD, LETTERING	A11053-4	
1	1			A11053-4	PC BOARD SUB-ASSY	A11053-5	
				2			
2	3			CC100-29	CAP. FXD. CERAMIC		C4,7
1	4			CC100-14	CAP. FXD. CERAMIC		C5
1	5			CC10026-10	CAP. FXD. CERAMIC		C3
1	6			CM112E102J15	CAP. FXD. CERAMIC		C6
1	7			CC100-16	CAP. " " "		C8
1	8			CE10017-220-6-B	CAP. ELECTROLYTIC		C2
1	9			CE10014-4.7-35	CAP. SOLID TANT.		C1
				10			
3	11			RC07GF122J	RES. FXD. COMP. (SEE CIRCUIT SIDE)		R17,18,19
1	12			RC07GF820J	RES. FXD. COMP.		R15
1	13			RC07GF131J	RES. FXD. COMP.		R16
1	14			RC07GF2R7J	RES. FXD. COMP.		R1
6	15			RC07GF272J	RES. FXD. COMP.		R3,10,11,12,13,14
3	16			RC07GF241J	RES. FXD. COMP.		R5,6,7
3	17			RC07GF271J	RES. FXD. COMP.		R2,3,4
1	18			RC07GF102J	RES. FXD. COMP.		R8
				19			
1	20			MV2104	DIODE		CR1
2	21			MV2105	DIODE (MOTOROLA)		CR2,3
				22			
1	23			UGH7806393	INT. CKT. (FAIRCHILD)		A1
1	24			UGB930159X	INT. CKT. (FAIRCHILD)		A2
1	25			UGB950359X	INT. CKT. (FAIRCHILD)		A3
1	26			UGB950459X	INT. CKT. (FAIRCHILD)	A11053-5	A4
				27			
				28	CK10869	SCHEMATIC	REF

A11053-5 Ø

1	29	A11070-1	VCO TUNING ASSY	A11053-5	
1	30	A11070-2	VCO TUNING ASSY		
1	31	A11070-3	VCO TUNING ASSY		
1	32	CL275-102	INDUCTOR		L1
1	33	CL275-103	INDUCTOR	A11053-5	L2



ADD DASH NO.
ADD LATEST REVISION LETTER

CIRCUIT SIDE
(MTG. OF R17, R18, R19 & C8 SHOWN)

COMPONENT SIDE

NOTE: MOUNT COMPONENTS R17, R18, R19 & C8 AS CLOSE AS POSSIBLE TO P.C.B.

TOLERANCES		SCALE: 2:1
ALL OTHERS	DEC. DIM. ± .05 FRAC. DIM. ± 1/64 ANGULAR DIM. ± 0° 30'	DRILL, PUNCH, COMMERCIAL STOCK SIZES AND MANUFACTURERS TOLERANCES ARE NOT INCLUDED.

MMX () 3	110/71	A11043	25 AUG 72
MODEL	PROJECT NO.	ASSY. NO.	DATE

TMC (Canada) LIMITED OTTAWA ONTARIO			
PC BOARD ASSEMBLY MAJOR LOOP V.C.O.			
DRAWN Y.F. LEE		ELEC. DES. APP. MECH. DES. APP.	
HEAT TREAT. SPEC.		FINAL APPROVAL	
FINISH & SPEC. NO.		SHEET 5 of 5 A11053-5 Ø	