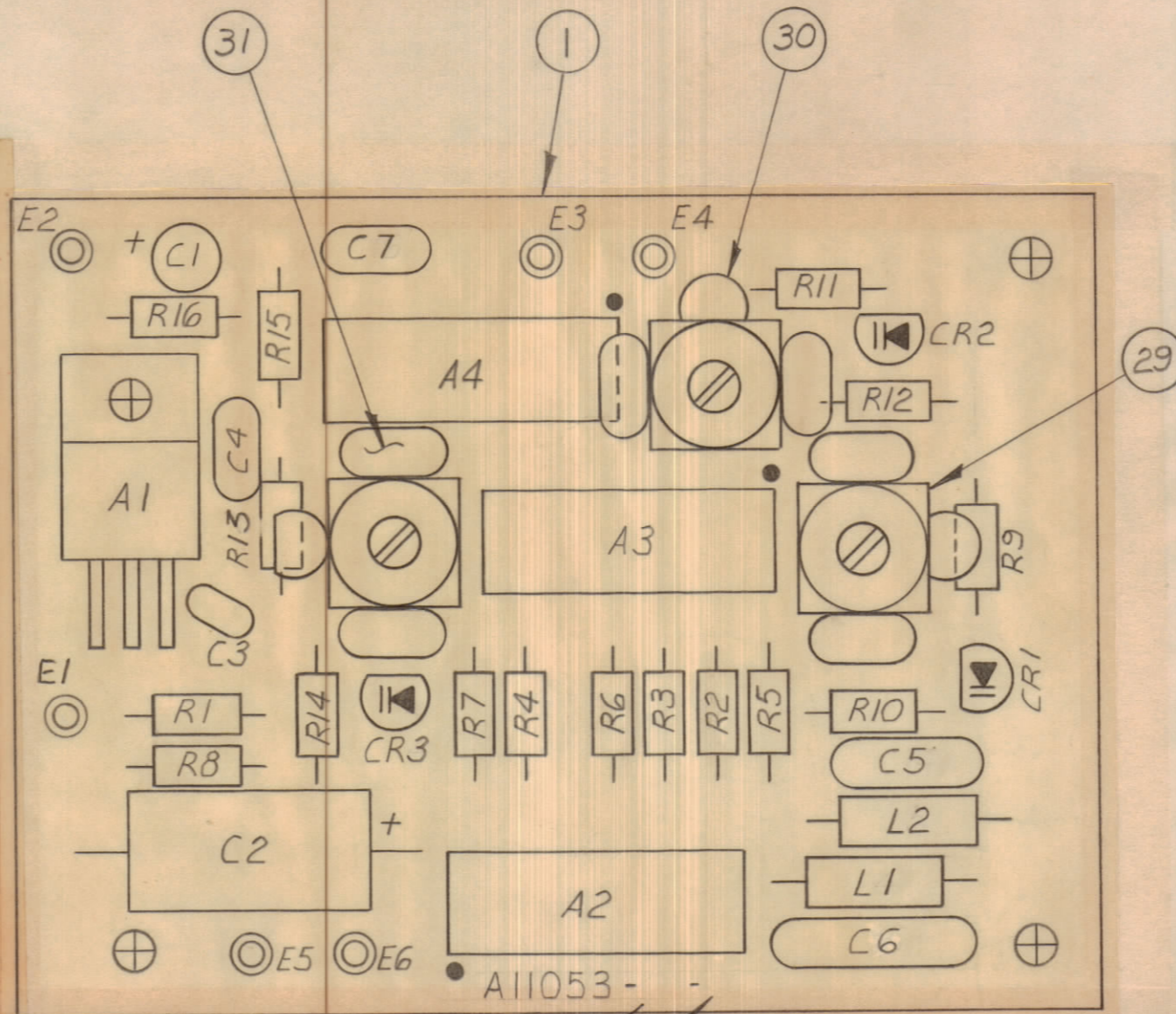
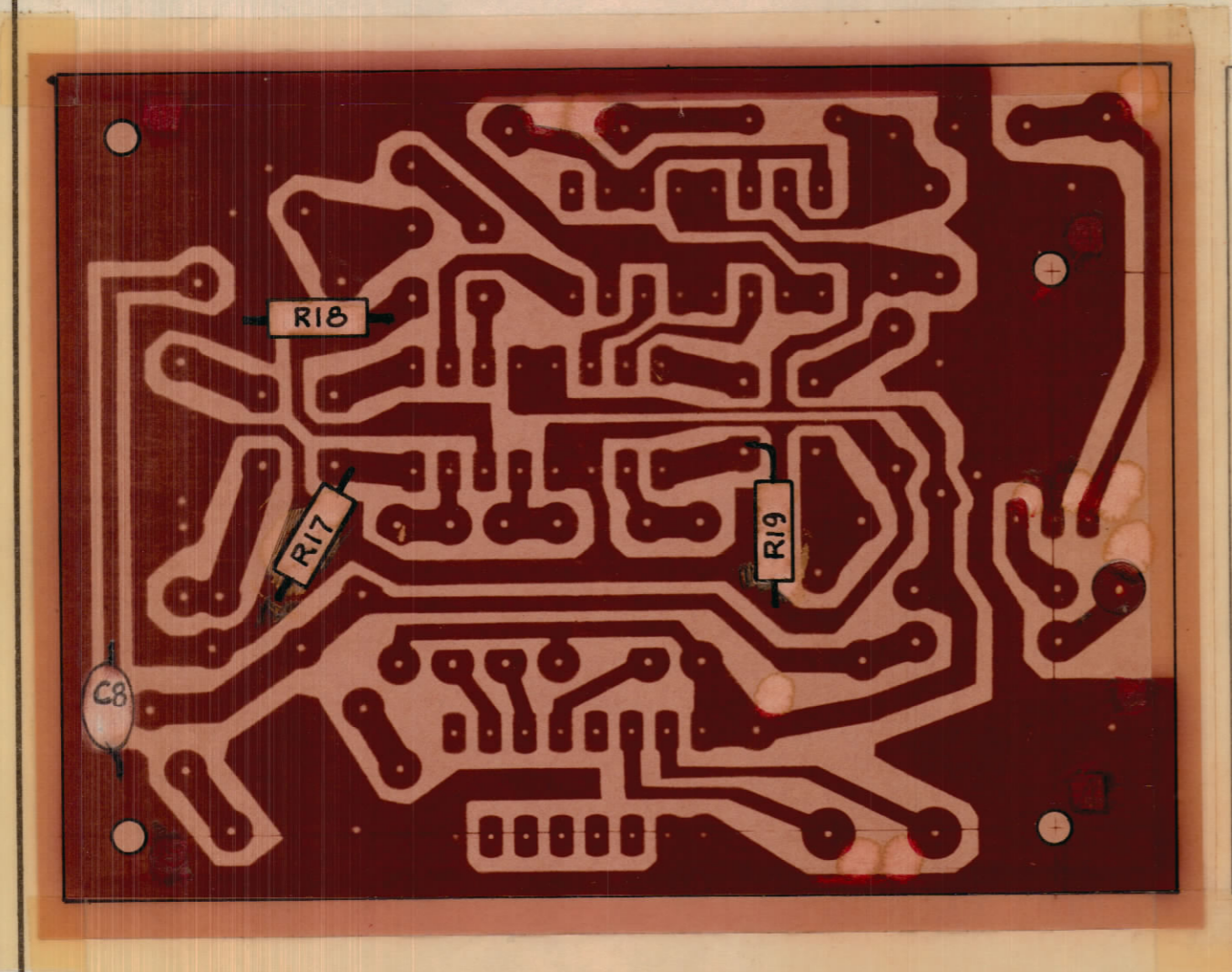


IF IT IS FOUND DESIRABLE TO CHANGE ANY TOLERANCE OR OTHER DETAIL SPECIFIED ON THIS DRAWING NOTIFY THE PURCHASER PROMPTLY.						DIMENSIONS IN INCHES UNLESS OTHERWISE SPECIFIED	
MAXIMUM ALLOWABLE TOLERANCES HAVE BEEN DETERMINED AND DEVIATIONS WILL BE CAUSE FOR REJECTION. REMOVE ALL BURRS AND SHARP EDGES.							
ISSUE	ITEM	CHANGED FROM	DATE	CN. NO.	DRAFTS	CHECKER	ENG. APP.
Ø		PROD. RELEASE	8 AUG 73		MAF	YFL	

NO.	REQ'D	-5	ITEM	PART NO.	DESCRIPTION	USED ON	REMARKS
				A11053-1	PC BOARD, ETCHING	A11053-2	
				A11053-2	PC BOARD, MACHINING	A11053-3	
				A11053-3	PC BOARD, LETTERING	A11053-4	
1	1			A11053-4	PC BOARD SUB-ASSY	A11053-5	
				2			
2	3			CC100-29	CAP. FXD. CERAMIC		C4,7
1	4			CC100-14	CAP. FXD. CERAMIC		C5
1	5			CC10026-10	CAP. FXD. CERAMIC		C3
1	6			CM112E102J15	CAP. FXD. CERAMIC		C6
1	7			CC100-16	CAP. " " "		C8
1	8			CE10017-220-6-B	CAP. ELECTROLYTIC		C2
1	9			CE10014-4.7-35	CAP. SOLID TANT.		C1
				10			
3	11			RC07GF122J	RES. FXD. COMP. (SEE CIRCUIT SIDE)		R17,18,19
1	12			RC07GF820J	RES. FXD. COMP.		R15
1	13			RC07GF131J	RES. FXD. COMP.		R16
1	14			RC07GF2R7J	RES. FXD. COMP.		R1
6	15			RC07GF272J	RES. FXD. COMP.		R3,10,11,12,13,14
3	16			RC07GF241J	RES. FXD. COMP.		R5,6,7
3	17			RC07GF271J	RES. FXD. COMP.		R2,3,4
1	18			RC07GF102J	RES. FXD. COMP.		R8
				19			
1	20			MV2104	DIODE		CR1
2	21			MV2105	DIODE (MOTOROLA)		CR2,3
				22			
1	23			UGH7806393	INT. CKT. (FAIRCHILD)		A1
1	24			UGB930159X	INT. CKT. (FAIRCHILD)		A2
1	25			UGB950359X	INT. CKT. (FAIRCHILD)		A3
1	26			UGB950459X	INT. CKT. (FAIRCHILD)	A11053-5	A4
				27			
				28	CK10869	SCHEMATIC	REF

A11053-5 Ø

1	29			A11070-1	VCO TUNING ASSY	A11053-5	
1	30			A11070-2	VCO TUNING ASSY		
1	31			A11070-3	VCO TUNING ASSY		
1	32			CL275-102	INDUCTOR		L1
1	33			CL275-103	INDUCTOR	A11053-5	L2



ADD DASH NO.
ADD LATEST REVISION LETTER

CIRCUIT SIDE
(MTG. OF R17, R18, R19 & C8 SHOWN)

COMPONENT SIDE

NOTE: MOUNT COMPONENTS R17, R18, R19 & C8 AS CLOSE AS POSSIBLE TO P.C.B.

TOLERANCES		SCALE: 2:1
ALL OTHERS	DEC. DIM. ± .05 FRAC. DIM. ± 1/64 ANGULAR DIM. ± 0° 30'	DRILL, PUNCH, COMMERCIAL STOCK SIZES AND MANUFACTURERS TOLERANCES ARE NOT INCLUDED.

MMX () 3	110/71	A11043	25 AUG 72
MODEL	PROJECT NO.	ASSY. NO.	DATE

TMC (Canada) LIMITED OTTAWA ONTARIO			
PC BOARD ASSEMBLY MAJOR LOOP V.C.O.			
DRAWN Y.F. LEE		MECH. DES. APP.	
CHECKED		FINAL APPROVAL	
FINISH & SPEC. NO.		SHEET 5 of 5 A11053-5 Ø	