

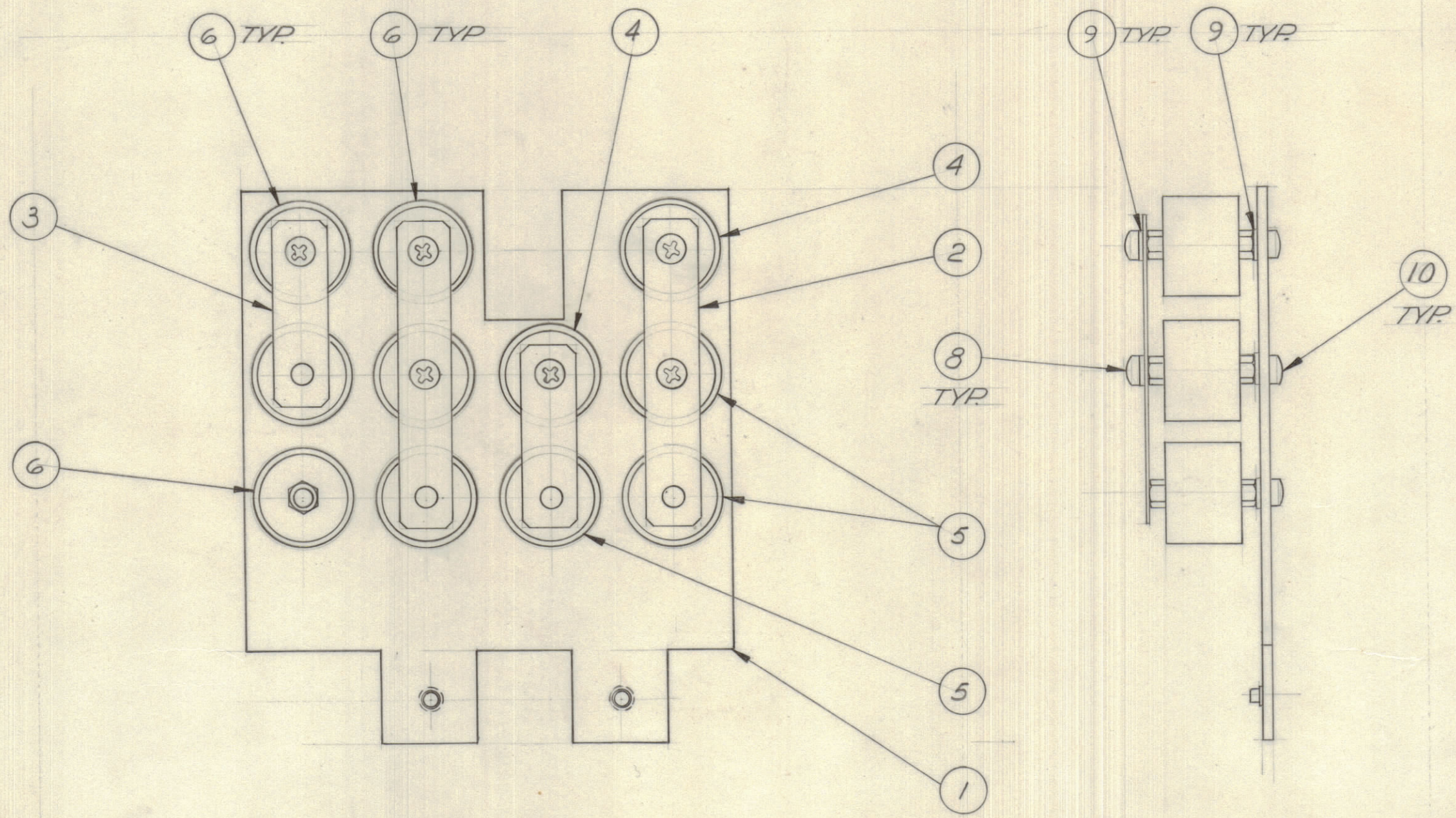
IF IT IS FOUND DESIRABLE TO CHANGE ANY TOLERANCE OR OTHER DETAIL SPECIFIED ON THIS DRAWING NOTIFY THE PURCHASER PROMPTLY.

MAXIMUM ALLOWABLE TOLERANCES HAVE BEEN DETERMINED AND DEVIATIONS WILL BE CAUSE FOR REJECTION. REMOVE ALL BURRS AND SHARP EDGES.

DIMENSIONS IN INCHES UNLESS OTHERWISE SPECIFIED

ISSUE	ITEM	CHANGED FROM	DATE	CH. NO.	DRAFTS	CHECKER	ENG. APP.
X		ENG RELEASE	21 OCT 71		LAT	LB	

REQ.	ITEM	PART NO.	DESCRIPTION	USED ON	REMARKS
1	1	MS 11347	PLATE, CAPACITOR MTG.	A11013	
2	2	MS202-43-250	LEAD, CONNECTING	A11013	
2	3	MS202-44-150	LEAD, CONNECTING	A11013	
2	4	CC109-19	CAPACITOR FXD CERAMIC	A11013	
3	5	CC109-28	CAPACITOR FXD CERAMIC	A11013	
6	6	CC109-38	CAPACITOR FXD CERAMIC	A11013	
	7				
6	8	SCPP0632554	SCREW, MACHINE, PAN HD.	A11013	
17	9	LWE06M55	WASHER, LOCK, TOOTH.	A11013	
11	10	SCPP0632555	SCREW, MACHINE, PAN HD.	A11013	
	11				
2		NT10002-1	NUT, LOCK, CLINCH	MS11347	



A11013 X

TOLERANCES			SCALE: 1/1
ALL OTHERS	DEC. DIM. ± 1/64	.XX*.01	DRILL, PUNCH, COMMERCIAL STOCK SIZES AND MANUFACTURERS TOLERANCES ARE NOT INCLUDED.
	FRAC. DIM. ± 1/64	.XX*.01	
	ANGULAR DIM. ± 0° 30'	.XXX*.008	

LPA 1KD	75/71	A10788	21 OCT 71
MODEL	PROJECT NO.	ASS'Y. NO.	DATE

TMC (Canada) LIMITED OTTAWA ONTARIO			
STOCK SIZE		CAPACITOR ASSEMBLY	
MATERIAL	WEIGHT PER PC.	PLATE ASSEMBLY	
TYPE & TEMPER		THOMAS	
HEAT TREAT. SPEC.		L. BROWN	
FINISH & SPEC. NO.		A11013 X	