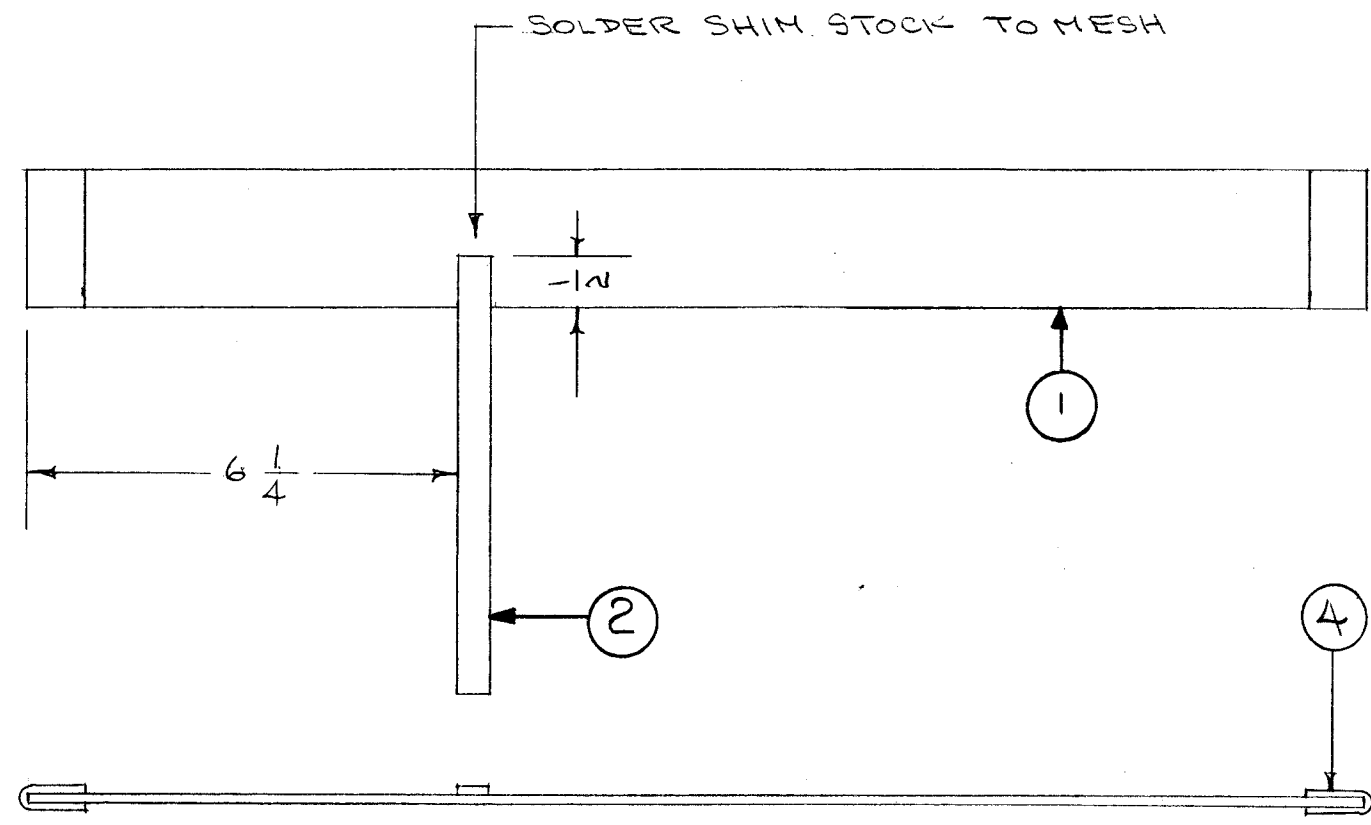


D 5114	TMC P/N	USED ON	ITEM 1
	A1199-1	TR138, TR149, TR153	MS1205-13.12
	A1199-2	TR138	MS1205-15.50

NOTICE TO PERSONS RECEIVING THIS DRAWING

THE TECHNICAL MATERIEL CORPORATION claims proprietary right in the material disclosed hereon. This drawing is issued in confidence for engineering information only and may not be reproduced or used to manufacture anything shown hereon without permission from THE TECHNICAL MATERIEL CORPORATION to the user. This drawing is loaned for mutual assistance and is subject to recall at any time.

Property of:
THE TECHNICAL MATERIEL CORPORATION
 MAMARONECK, NEW YORK



D		B/M & USED ON CHART REVISED. 6 1/4 WAS 4 1/2	1.23.67	17711	RME	<i>gcp</i>	<i>mm</i>
C	1	A-1199-3 DELETED	10/11/61	5682	E.E.	<i>ab</i>	<i>aa</i>
B	2	A-1199-3 ADDED	9/8/61	5542	E.E.	<i>ab</i>	<i>ab</i>
B	1	USED ON CHART ADDED					
A	1	MS-1205-15.50 WAS MS-776 MS-1205-14.0 WAS MS-775	3/13/58	1	<i>HO</i>	<i>HO</i>	<i>OK</i>
ISSUE	ITEM	CHANGED FROM	DATE	CH. NO.	DRAFTS	CHECKER	ENG. APP.

X	4	TA-108-9	TAPE	
X	3	BS 100	SOLDER, SOFT	
1	2	MS 774	CONNECTOR, SHIELD	
1	1	SEE CHART	PERFORATED METAL STRIP (13/8 LONG)	
REQ.	ITEM	PART NO.	DESCRIPTION	SYMBOL
			THE TECHNICAL MATERIEL CORP. MAMARONECK, NEW YORK	
			SHIELD ASSEMBLY	
			MATERIAL	
		ODD Y4156	<i>JMD</i>	<i>ab</i>
TYPE & TEMPER		HEAT TREAT. SPEC.	DRAWN	CHECKED
			<i>ab</i>	<i>WJC</i>
			FINAL APPROVAL	
			A1199 D	
		FINISH & SPEC. NO.	ELEC. DES. APP.	MECH. DES. APP.

TOLERANCES		SCALE:		1 EACH	TR-138	A-1200	1-A-56
DEC. DIM. ±	FRAC. DIM. ±	MAXIMUM ALLOWABLE TOLERANCES HAVE BEEN DETERMINED AND ANY DEVIATIONS WILL BE CAUSE FOR REJECTION.		REQ. PER UNIT	MODEL	PROJECT NO.	DATE
ANGULAR DIM. ±		REMOVE ALL BURRS AND SHARP EDGES					
USED ON							