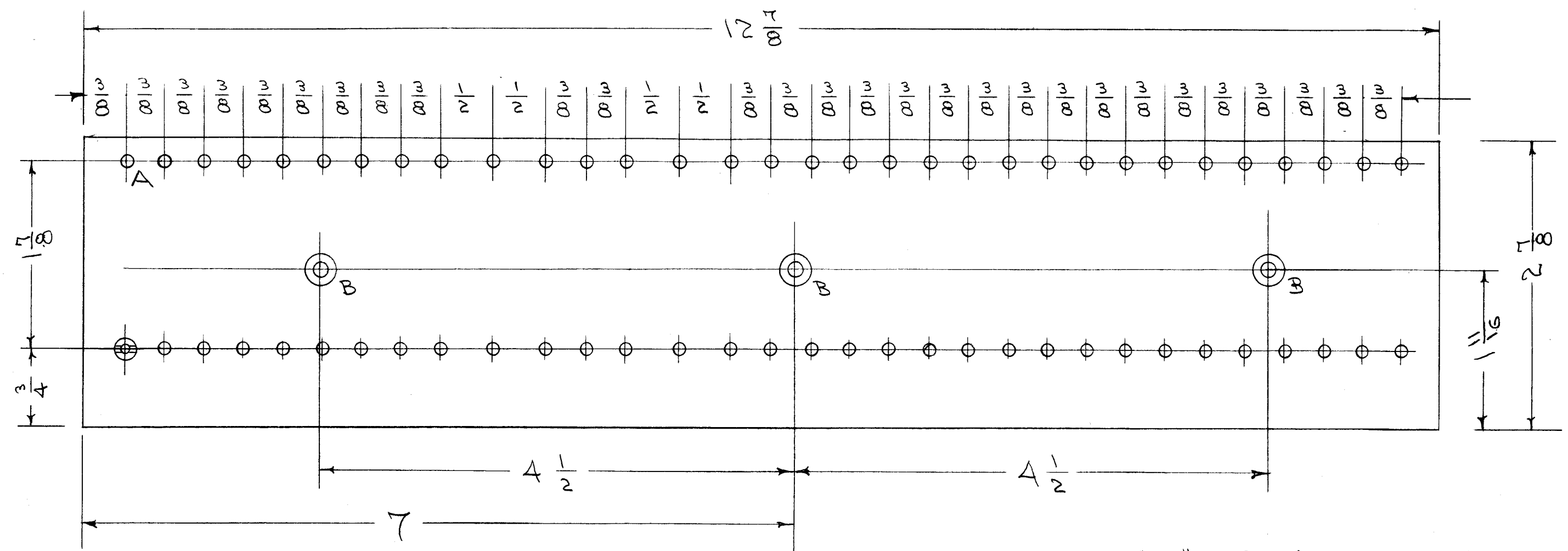
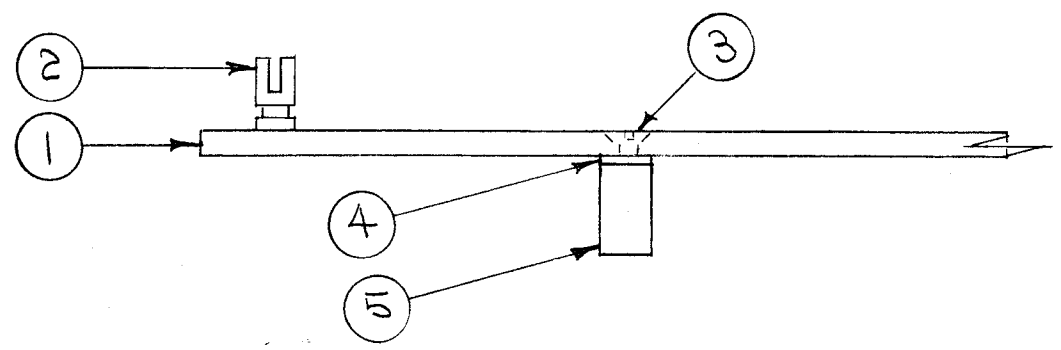


A-1167



NOTE POSITION OF LUGS

A - # 32 (.116) DIA. - 64 HOLES REQ.
 B - DRILL & C'SINK G-32 - 3 " " "



NOTICE TO PERSONS RECEIVING THIS DRAWING

THE TECHNICAL MATERIEL CORPORATION claims proprietary right in the material disclosed hereon. This drawing is issued in confidence for engineering information only and may not be reproduced or used to manufacture anything shown hereon without permission from THE TECHNICAL MATERIEL CORPORATION to the user. This drawing is loaned for mutual assistance and is subject to recall at any time.

Property of:
 THE TECHNICAL MATERIEL CORPORATION
 MAMARONECK, NEW YORK

REQ. ITEM	PART NO.	DESCRIPTION	SYMBOL
3	5	TE-135-3	STANDOFF
3	4	LWEO6MRN	WASHER, LOCK
3	3	SCFS0632BNG	SCREW, MACHINE
64	2	TE-109-3	LUG.
1	1	PX-317	TERM. BD. (NO DWG.)
1/8 THICK		THE TECHNICAL MATERIEL CORP.	
STOCK SIZE		MAMARONECK, NEW YORK	
PHENOLIC		TERM. BD. SUB ASSY.	
MATERIAL		RTC.	
XXXP LAMINATE		DATE: 7/6/55	WJC
TYPE & TEMPER		DRAWN: RB	CHECKED: WJC
HEAT TREAT. SPEC.		FINAL APPROVAL	
NATURAL		A-1167	
& SPEC. NO.		ELEC. DES. APP.	MECH. DES. APP.

ISSUE	ITEM	CHANGED FROM	DATE	CH. NO.	DRAFTS	CHECKER	ENG. APP.
TOLERANCES		SCALE:					
DEC. DIM. ±		MAXIMUM ALLOWABLE TOLERANCES HAVE BEEN DETERMINED AND ANY DEVIATIONS WILL BE CAUSE FOR REJECTION.					
FRAC. DIM. ±		REMOVE ALL BURRS AND SHARP EDGES					
ANGULAR DIM. ±							

REQ. PER UNIT	MODEL	PROJECT NO.	ASSY. NO.	DATE
1	RTC		A-1168	12-6-55
USED ON				