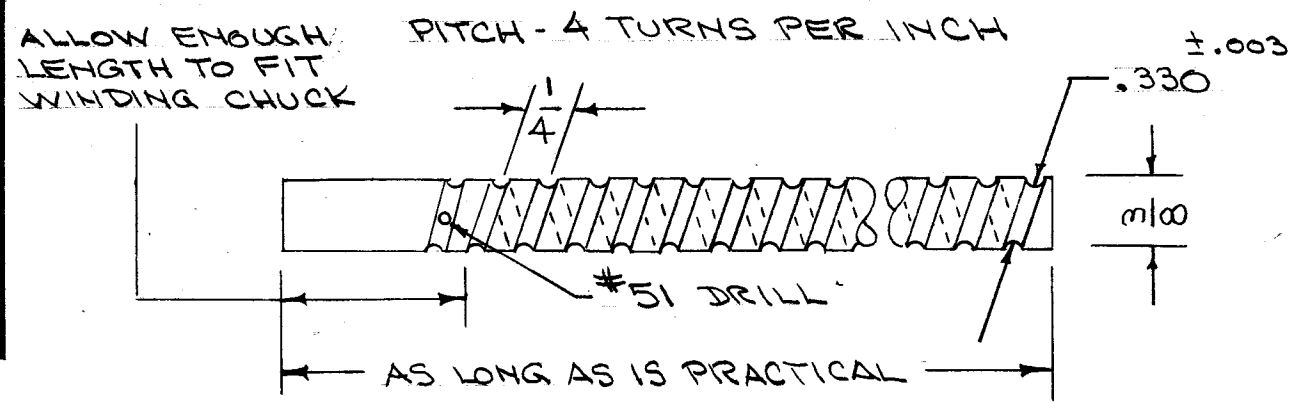
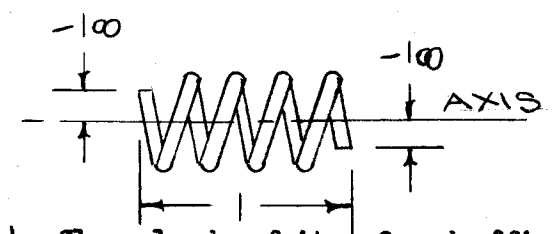


D
A-1129

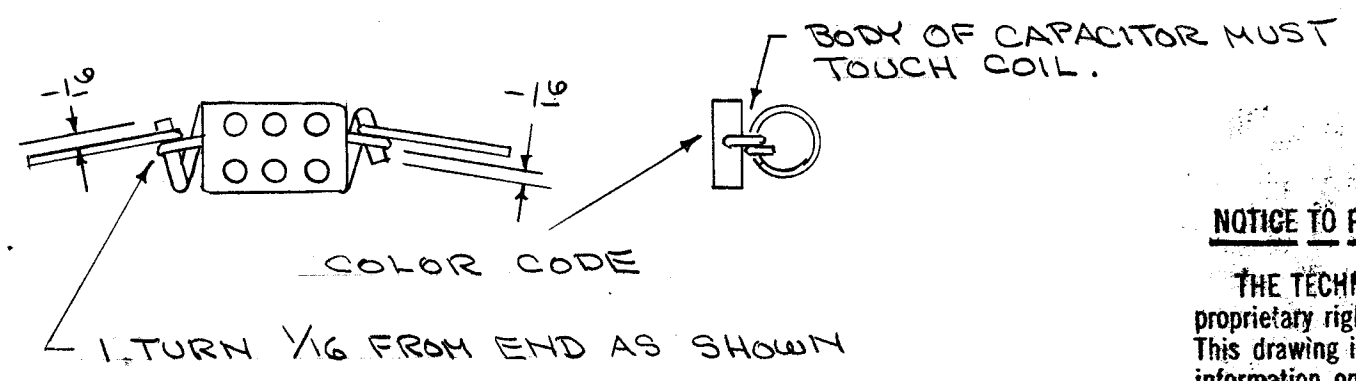


- Using jig of dimensions shown above, tight wind length of WL-100-4 (#16) wire.
- Screw jig out of wire leaving simple long coil of approximately .330 I.D.
- Cut 4 turn sections from long coil so that ends slightly overlap imaginary axis thru center of coil as shown below.

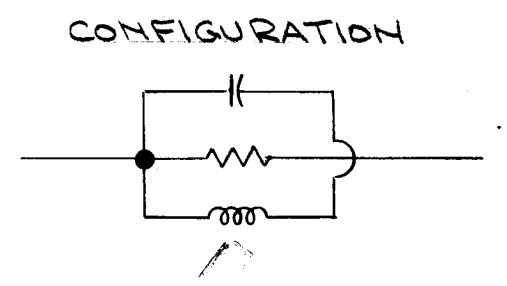
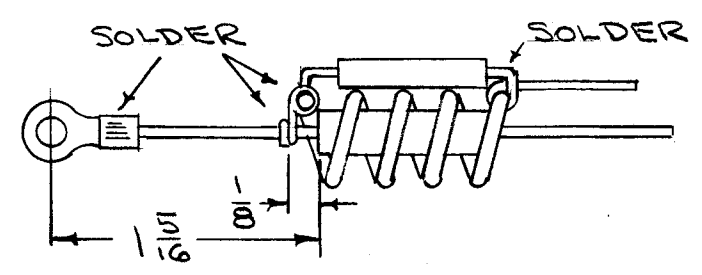
Warning- Do Not alter physical construction of coil during any operation.



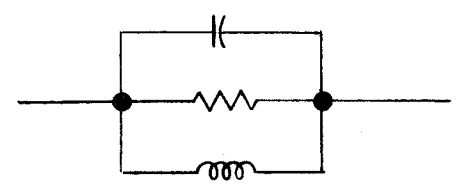
- Clean leads of item 2 and affix to short coil as shown below.



- Clean leads of item 3 and insert resistor in center of coil. Wrap 1 turn of capacitor lead around resistor lead only at one end. Make clean solder connections where indicated below.



- Test-Use Measurements Corp. M.C. Meter, couple loosely & obtain dip. Dip must be between frequencies 102 MCS. and 108 MCS.
- Twist open end cap. lead around res. lead. Solder in place and clip off. Attach item 5 to resistor lead, as shown.
- Final configuration



NOTICE TO PERSONS RECEIVING THIS DRAWING

THE TECHNICAL MATERIEL CORPORATION claims proprietary right in the material disclosed hereon. This drawing is issued in confidence for engineering information only and may not be reproduced or used to manufacture anything shown hereon without permission from THE TECHNICAL MATERIEL CORPORATION to the user. This drawing is loaned for mutual assistance and is subject to recall at any time.

Property of:
THE TECHNICAL MATERIEL CORPORATION
MAMARONECK, NEW YORK

REQ. ITEM	PART NO.	DESCRIPTION	SYMBOL
1	5	TE-165-31455	TERMINAL
X	4	BS-100	SOLDER, SOFT
1	8	RC42GF181J	RESISTOR, FIXED
1	2	CM15C300J03	CAPACITOR, "
X	1	WL-100-4	WIRE, BUSSBAR 16 GA
STOCK SIZE		THE TECHNICAL MATERIEL CORP. MAMARONECK, NEW YORK	
MATERIAL		AX-155 ASSEMBLY P/A PS-103, PS-104	
TYPE & TEMPER		HEAT TREAT. SPEC.	DRAWN
FINISH & SPEC. NO.		ELEC. DES. APP.	MECH. DES. APP.

ISSUE	ITEM	CHANGED FROM	DATE	CH. NO.	DRAFTS	CHECKER	ENG. APP.
D		IT 2 WAS CM15C300J03 TO LOUIT 3 WAS K"	11/18/66	17263	WHO	QCS	QCS
C	1	PS-101 & PS-102 REMOVED (SEE A-1129)	1/5/66	3	QCS	QCS	QCS
TOLERANCES		SCALE:					
DEC. DIM. ±		MAXIMUM ALLOWABLE TOLERANCES HAVE BEEN DETERMINED AND ANY DEVIATIONS WILL BE CAUSE FOR REJECTION. REMOVE ALL BURRS AND SHARP EDGES					
FRAC. DIM. ±							
ANGULAR DIM. ±							

2	TRTF-2	P/A	11-20-58
2	RTF		11-5-56
REQ. PER UNIT	MODEL	PROJECT NO.	ASS'Y. NO.
USED ON			