

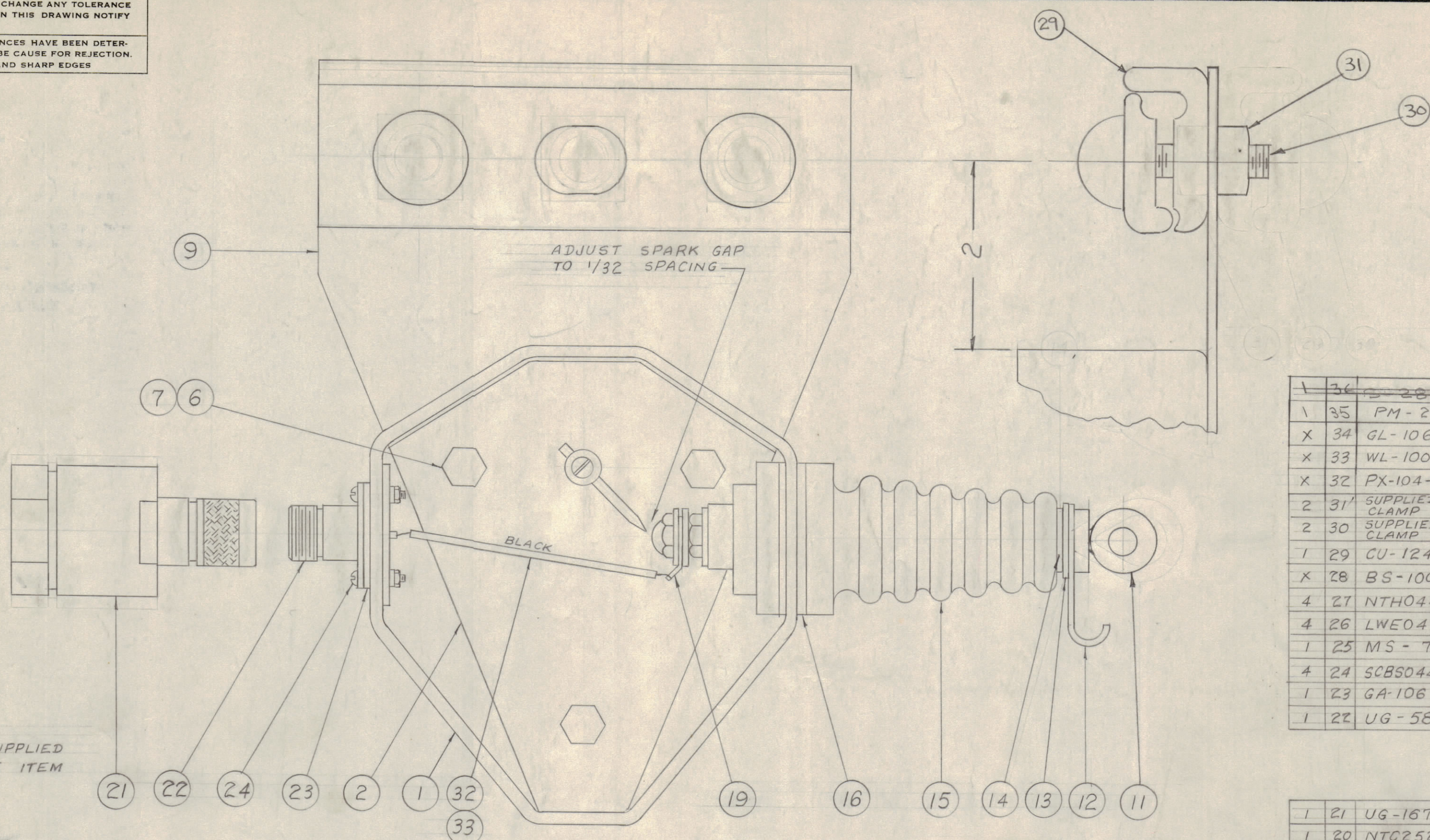
IF IT IS FOUND DESIRABLE TO CHANGE ANY TOLERANCE OR OTHER DETAIL SPECIFIED ON THIS DRAWING NOTIFY THE PURCHASER PROMPTLY.

MAXIMUM ALLOWABLE TOLERANCES HAVE BEEN DETERMINED AND DEVIATIONS WILL BE CAUSE FOR REJECTION. REMOVE ALL BURRS AND SHARP EDGES

NOTICE TO PERSONS RECEIVING THIS DRAWING

THE TECHNICAL MATERIEL CORPORATION claims proprietary right in the material disclosed hereon. This drawing is issued in confidence for engineering information only and may not be reproduced or used to manufacture anything shown hereon without permission from THE TECHNICAL MATERIEL CORPORATION to the user. This drawing is loaned for mutual assistance and is subject to recall at any time.

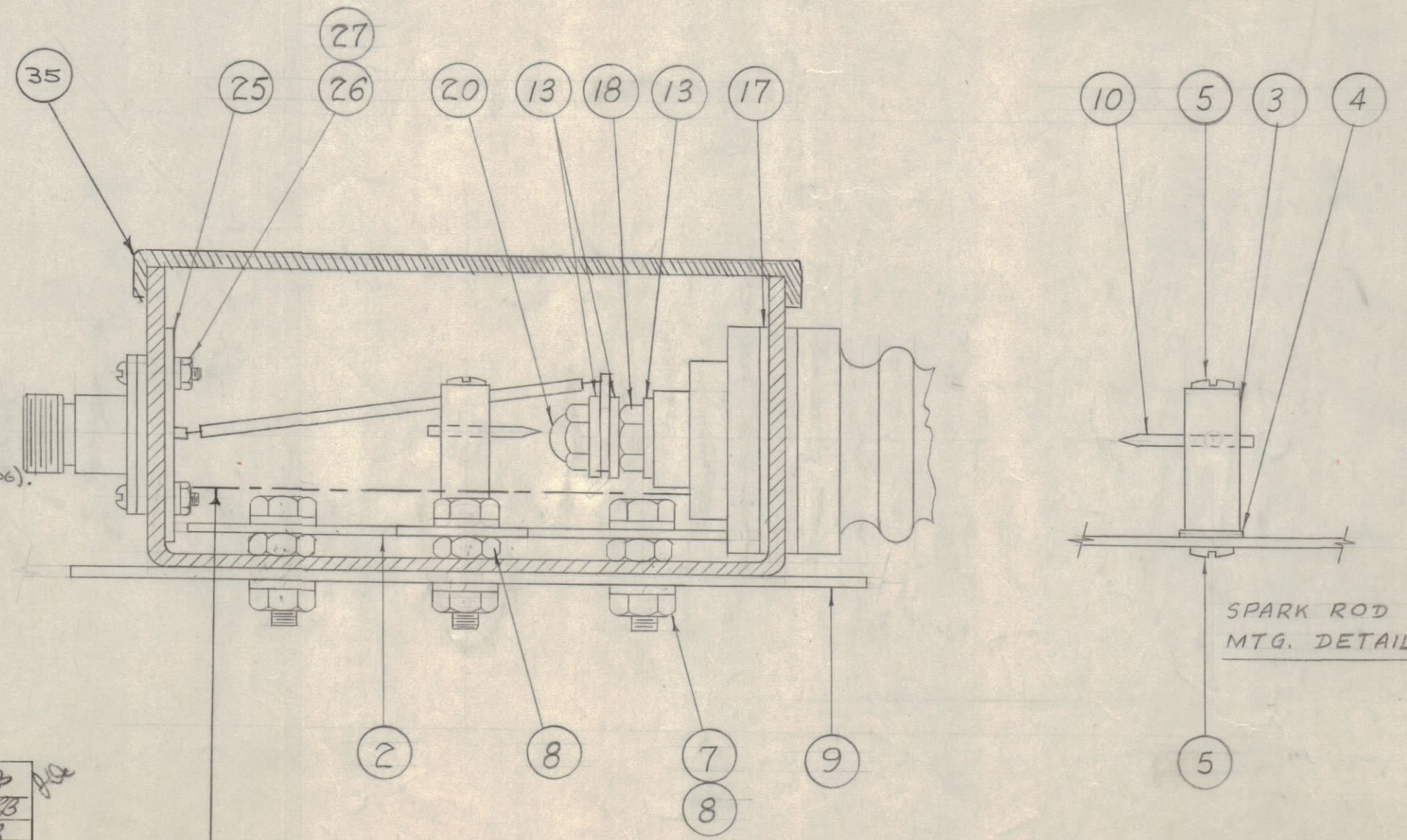
Property of:  
THE TECHNICAL MATERIEL CORPORATION  
MAMARONECK, NEW YORK



NOTE:  
ITEM 21 SUPPLIED AS LOOSE ITEM

1	36	28A	DESICCANT	Deleted
1	35	PM-231	COVER	
X	34	GL-106	COMPOUND	
X	33	WL-100-4	WIRE, BUSS-BAR	
X	32	PX-104-1-.053	SLEEVING, INSULATION	
2	31	SUPPLIED WITH CLAMP	NUT, SQUARE	
2	30	SUPPLIED WITH CLAMP	BOLT	
1	29	CU-124	CLAMP, SUSPENSION, CABLE	
X	28	BS-100	SOLDER, SOFT	
4	27	NTH0440BC8	NUT, HEX.	
4	26	LWE04MRC	LOCKWASHER, EXT.	
1	25	MS-796	PLATE REINFORCEMENT	
4	24	SCBS0440BC8	SCREW, MACHINE	
1	23	GA-106	GASKET, RECEPTACLE	
1	22	UG-58A/U	RECEPTACLE	

A-1125 C



NOTE:  
1. PLACE SPARK GAP WITH ITEM 30 (SEE DRAWING)  
2. PLACE COVER ON CASE AND SEAL WITH ITEM 34 (GL-106).

1	21	UG-16TA/U	PLUG, CONNECTOR	
1	20	NTC2520BCL	NUT, CAP	
1	19	TE-132	TERMINAL, LUG	
1	18	SUPPLIED WITH INSULATOR	HEX, NUT	
1	17	SUPPLIED WITH INSULATOR	GASKET, CORK	
1	16	GA-115	GASKET, NEOPRENE	
1	15	NS-107	INSULATOR	
1	14	RY-113-1	GASKET, NEOPRENE	
4	13	SUPPLIED WITH INSULATOR	WASHER, FLAT	
1	12	MS-347	SERVICING HOOK	
1	11	SC149	BOLT, EYE	
1	10	PM-229	SPARK, ROD	
1	9	MS-790	CASE MOUNTING PLATE	
6	8	NTH2520BC14	NUT, HEX	
6	7	LWE25MRC	LOCKWASHER, EXT.	
3	6	SCHH2520BC16	SCREW, MACHINE	
2	5	SCBS0632BC6	SCREW, MACHINE	
1	4	LWE06MRC	LOCKWASHER, EXT.	
1	3	PM-230	POST	
1	2	MS-794	SPARK ROD MTG. PLATE	
1	1	PM-391	CASE MACHINING	

REQ. ITEM	PART NO.	DESCRIPTION	SYMBOL
<b>THE TECHNICAL MATERIEL CORP.</b>			
MAMARONECK, NEW YORK			
FINAL ASSEMBLY			
A-1125			
STOCK SIZE			
MATERIAL		WEIGHT PER PC.	
TYPE & TEMPER		13-19-56	
HEAT TREAT. SPEC.		A.J.J.	
FINISH & SPEC. NO.		A-1125 C	

C	IT. 11 WAS PM228	S.I. 6B 18902	MS	MS	FB
B	DWG NO WAS A-1219	2/21/57	2	MS	MS
A	ITEM 36 Deleted	9/21/56	1	MS	MS

ISSUE ITEM	CHANGED FROM	DATE	CN. NO.	DRAFTS	CHECKER	ENG. APP.
TOLERANCES						
SCALE:						
DRILL, PUNCH, COMMERCIAL STOCK SIZES AND MANUFACTURERS TOLERANCES ARE NOT INCLUDED.						

A-1125	PROJECT NO.	ASS'Y. NO.	1/19/56
MODEL			DATE