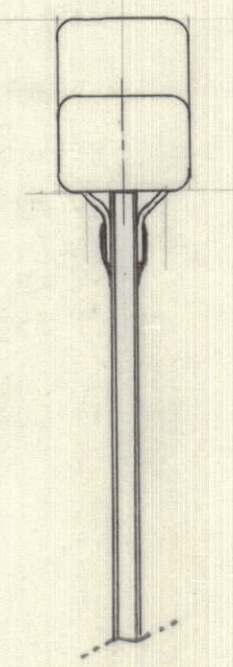
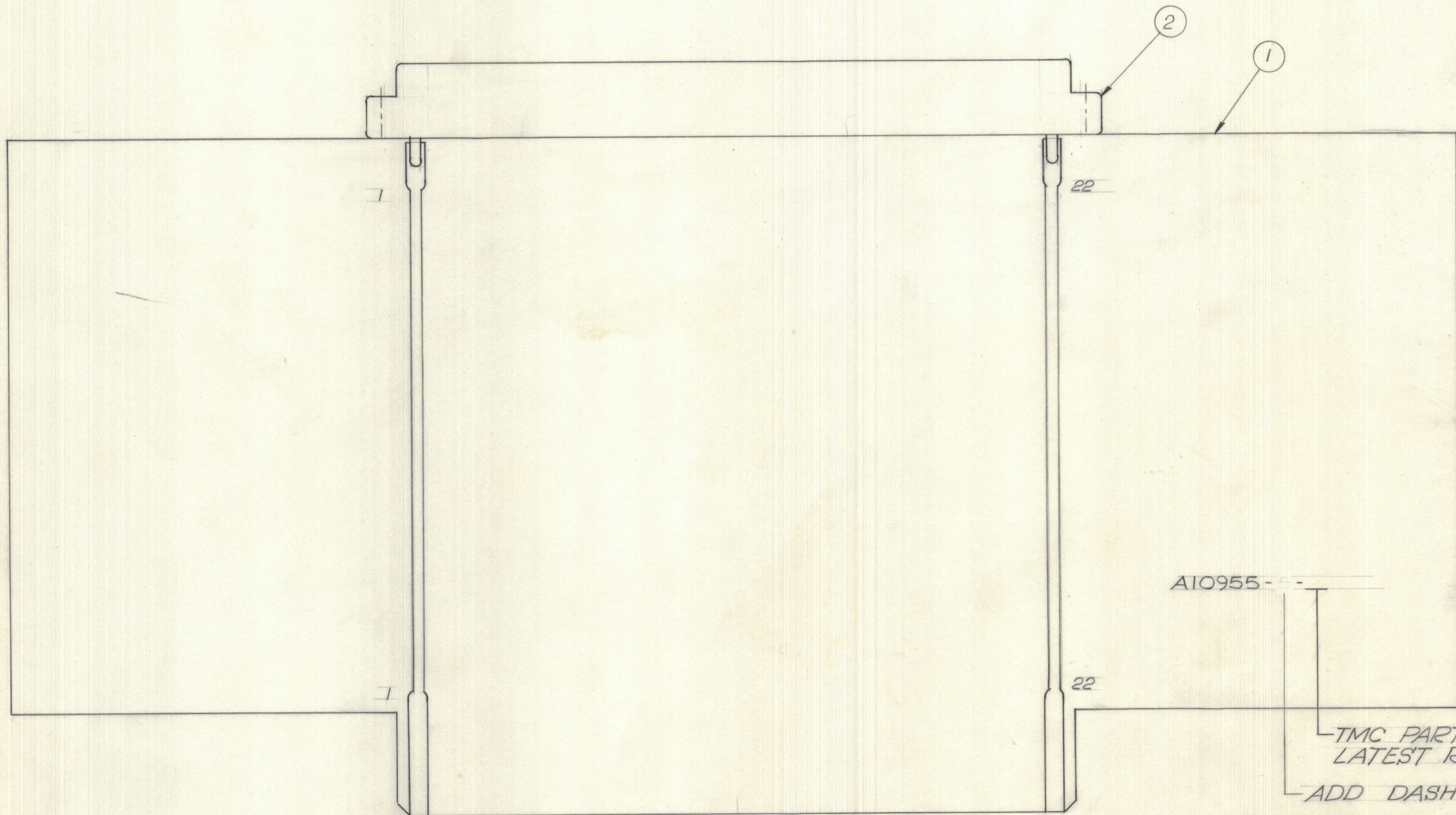


| IF IT IS FOUND DESIRABLE TO CHANGE ANY TOLERANCE OR OTHER DETAIL SPECIFIED ON THIS DRAWING NOTIFY THE PURCHASER PROMPTLY.       |      | DIMENSIONS IN INCHES UNLESS OTHERWISE SPECIFIED |        |         |        |         |           |
|---|------|---|--------|---------|--------|---------|-----------|
| MAXIMUM ALLOWABLE TOLERANCES HAVE BEEN DETERMINED AND DEVIATIONS WILL BE CAUSE FOR REJECTION. REMOVE ALL BURRS AND SHARP EDGES. |      |   |        |         |        |         |           |
| ISSUE   | ITEM | CHANGED FROM                                    | DATE   | CN. NO. | DRAFTS | CHECKER | ENG. APP. |
| Ø   |      | PROD. RELEASE                                   | FEB 71 |         | NAT.   | GP      |           |

| REQ. | ITEM | PART NO. | DESCRIPTION      | SYMBOL |
|------|------|----------|------------------|--------|
| 1    | 1    | A10955-2 | P.C. BOARD MACH. |        |
| 1    | 2    |          | CONNECTOR        |        |
|      |      |          |                  |        |
|      |      |          |                  |        |

NOTE:  
FOR PART NOS., SEE  
NUMERICAL PARTS LISTING.



A10955-5 Ø

A10955-5-

TMC PART NO. WITH  
LATEST REVISION LETTER  
ADD DASH NO.

| TOLERANCES |                       | SCALE: 2/1  |
|------------|-----------------------|---|
| ALL        | DEC. DIM. ± 1/64      | DRILL, PUNCH, COMMERCIAL STOCK<br>SIZES AND MANUFACTURERS<br>TOLERANCES ARE NOT INCLUDED. |
| OTHERS     | FRAC. DIM. ± 1/64     |   |
|            | ANGULAR DIM. ± 0° 30' |   |

|       |             |           |           |
|-------|-------------|-----------|-----------|
| SME-5 | 107-71      | A10955-5  | FEB 24/71 |
| MODEL | PROJECT NO. | ASSY. NO. | DATE      |

|                    |  |  |                 |
|--------------------|--|--|-----------------|
| STOCK SIZE         |  | TMC (Canada) LIMITED<br>OTTAWA ONTARIO |                 |
| MATERIAL           |  | 22 PIN EXTENDER CARD<br>ASSEMBLY       |                 |
| WEIGHT PER PC.     |  | THOMAS                                 |                 |
| TYPE & TEMPER      |  | DRAWN                                  | ELEC. DES. APP. |
|                    |  | A. KROTOR                              | GP              |
| HEAT TREAT. SPEC.  |  | CHECKED                                | FINAL APPROVAL  |
| FINISH & SPEC. NO. |  | SHT 4 OF 4                             | A10955-5 Ø      |