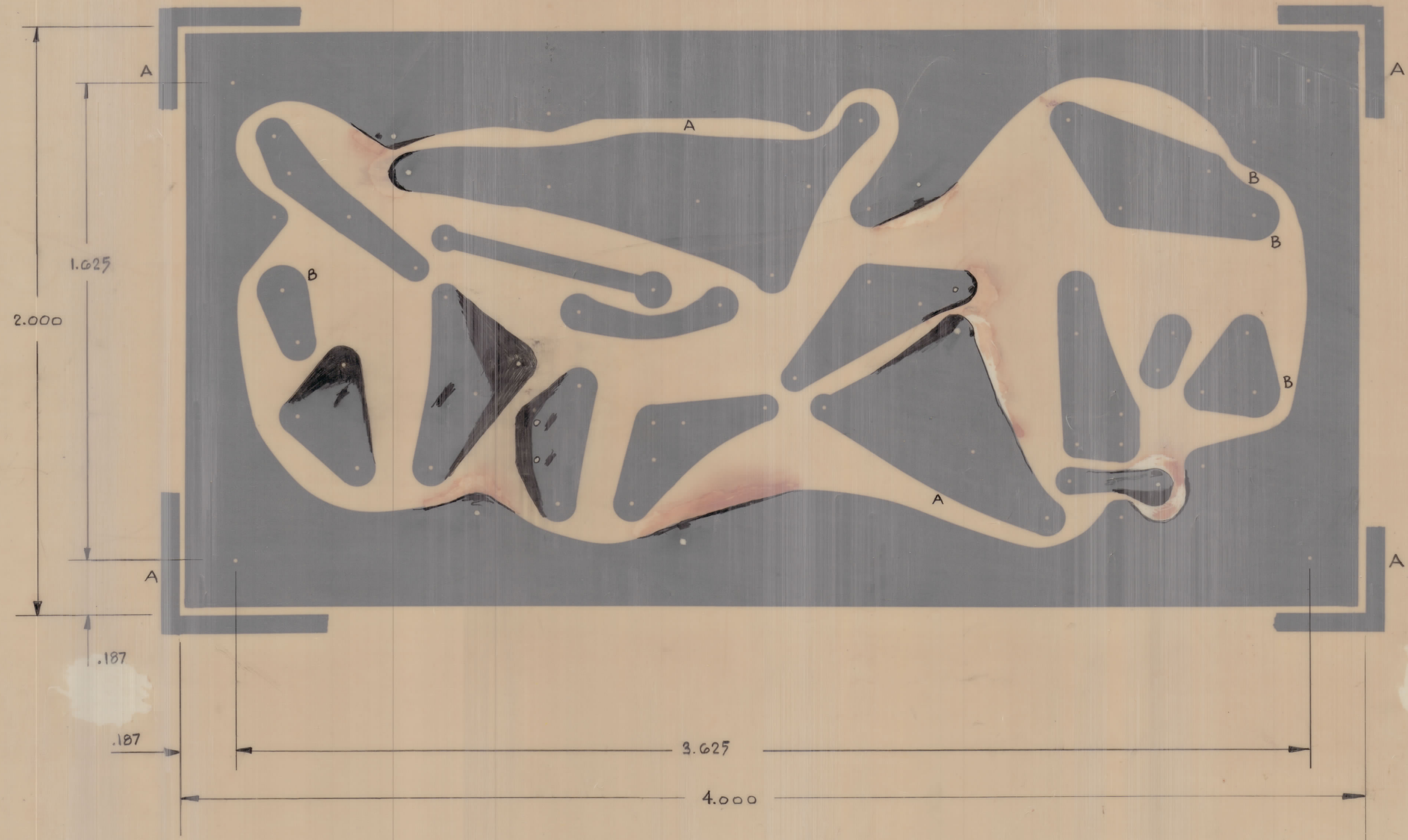


REV	ITEM	CHANGED FROM	DATE	EN. NO.	DRAWN	CHECKED	ENG. APP.
Ø		RELEASE TO PROD	23 NOV 70		JR		NA
A		REVISED PER CEMN	DEC. 3-70	872	GET		
B		REVISED PER CEMN	FEB 71	920	GET		



NOTES:-

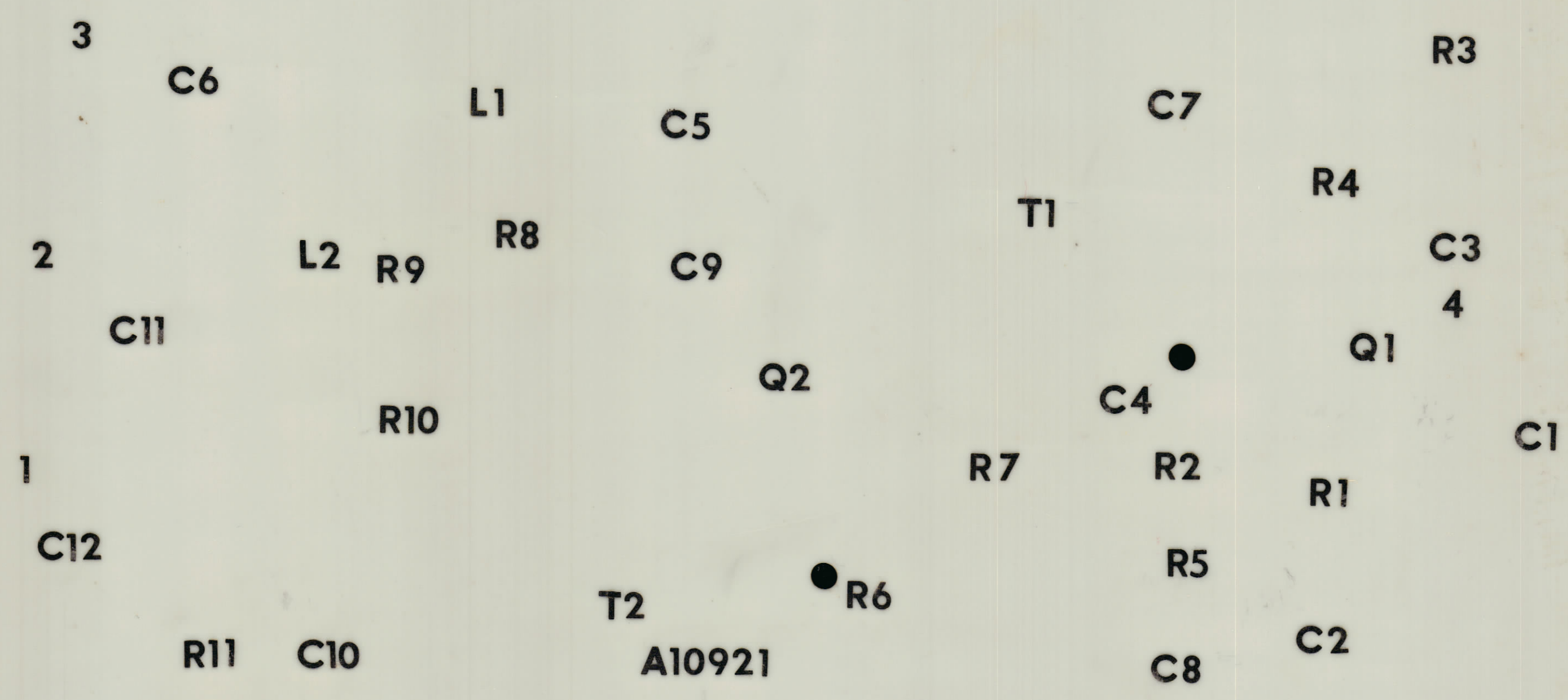
1. MATERIAL: PLASTIC SHEET LAMINATE COPPER CLAD FL-GE-062-C-2/0
2. FINISH: CONDUCTIVE PATTERN TO BE PLATED WITH A MINIMUM .0003 THK TIN/LEAD.
3. THIS BOARD MUST MEET REQUIREMENTS OF TMC SPEC 9735

HOLE DATA		
REF	DESCRIPTION	QTY
A	.140 DIA.	6
B	.093 DIA	4
UNIDENTIFIED HOLE .037 DIA		

VMC-B	084/70	A19921-5	Oct 20 70	TMC (Canada) LIMITED OTTAWA ONTARIO	
USED ON				PC BOARD ASSY	
MAXIMUM ALLOWABLE TOLERANCES HAVE BEEN DETERMINED AND DEVIATIONS WILL BE CAUSE FOR REJECTION UNLESS ALL DIMS AND SHARP EDGES				IF IT IS FOUND DESIRABLE TO CHANGE ANY TOLERANCE OR OTHER DETAIL SPECIFIED ON THIS DRAWING NOTIFY THE PURCHASER PROMPTLY	
TOLERANCES				SCALE 4/1	
ALL DIMS ± .05				DIMENSIONS IN INCHES	
FRACTIONAL DIMS ± .01				UNLESS OTHERWISE SPECIFIED	
ANGULAR DIMS ± 30'				DRILL PUNCH COMMERCIAL STOCK	
				NEED AND MANUFACTURERS	
				TOLERANCES ARE NOT INCLUDED	
FINISH & SPEC. NO.				SHT 2 OF 5 A19921 2 B	

ISSUE	ITEM	CHANGED FROM	DATE	CH. NO.	DRAFTS	CHECKER	ENG. APP.
0		RELEASE TO PROD	23 Nov 70		JR		
A		REVISED PER CEMN	DEC 2-70	872	CT	RP	
B		REVISED PER CEMN	FEB 71	920	CT		

REDUCE TO 3.000

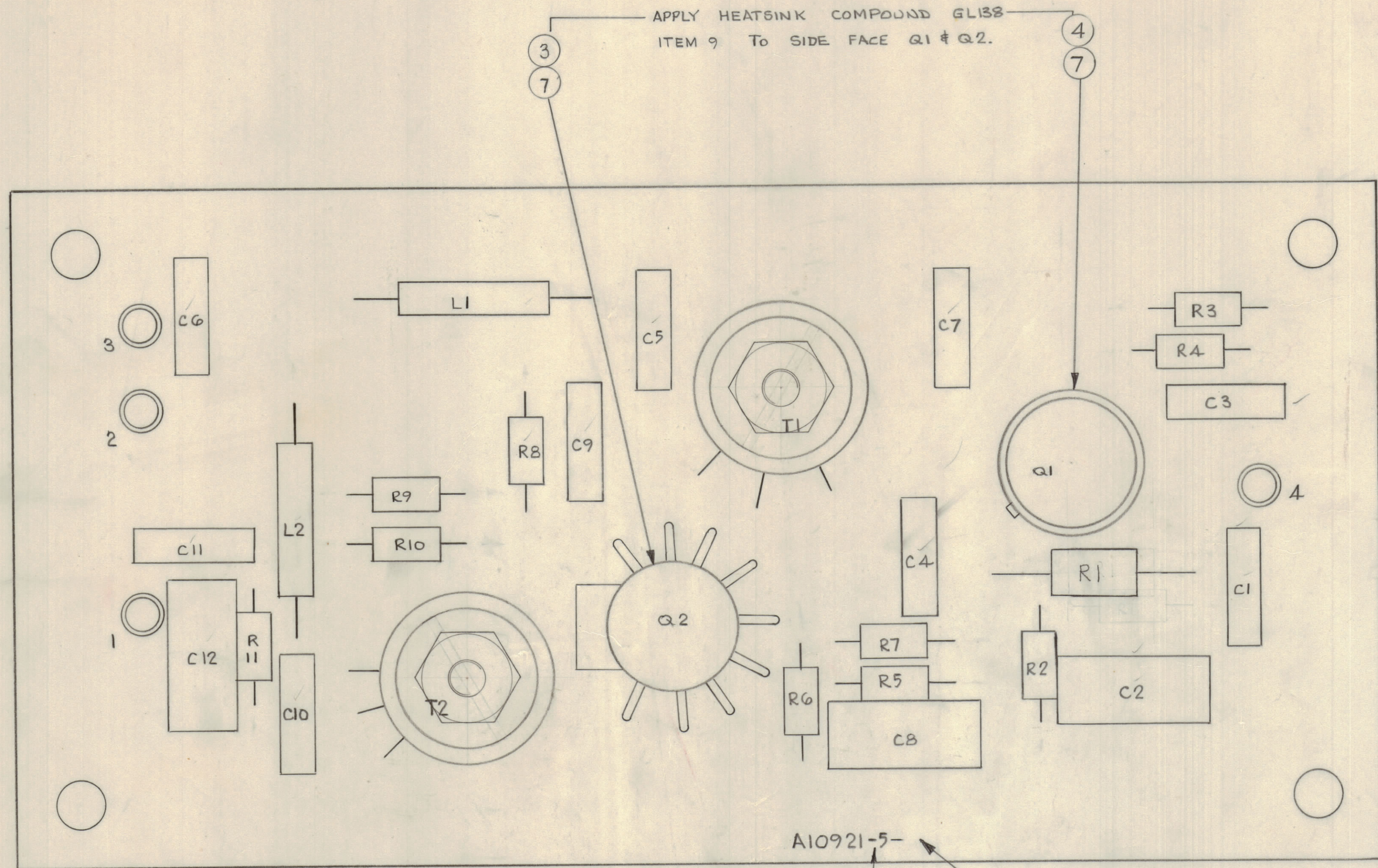


WHITE EPOXY PAINT
AS PER TMC SPEC 3727

VMC-B		114/70	A10921-5	7 Oct 70	TMC (Canada) LIMITED OTTAWA ONTARIO	
PROJECT NO.				DATE		STOCK RISE
USED ON				MATERIAL		WEIGHT PER PC
<small>MAXIMUM ALLOWABLE TOLERANCES HAVE BEEN DETERMINED AND DEVIATIONS WILL BE CAUSE FOR REJECTION REMOVE ALL BURRS AND SHARP EDGES</small>				<small>IF IT IS FOUND DESIRABLE TO CHANGE ANY TOLERANCE OR OTHER DETAIL SPECIFIED ON THIS DRAWING NOTIFY THE PURCHASER PROMPTLY.</small>		PC. BOARD ASSY OUTPUT
<small>TOLERANCES</small> ALL DEC DIM ± .05 OTHERS DEC DIM ± .01 ANGULAR DIM ± 0° 30'				<small>SCALE</small> ALL UNLESS OTHERWISE SPECIFIED DRILL PUNCH COMMERCIAL STOCK SIZES AND MANUFACTURERS TOLERANCES ARE NOT INCLUDED.		TYPE & TEMPER DRAWN CHECKED HEAT TREAT. SPEC. FINISH & SPEC. NO.
<small>FINISH & SPEC. NO.</small>				<small>FINAL APPROVAL</small> SHT 3 OF 5 A10921-3 B		

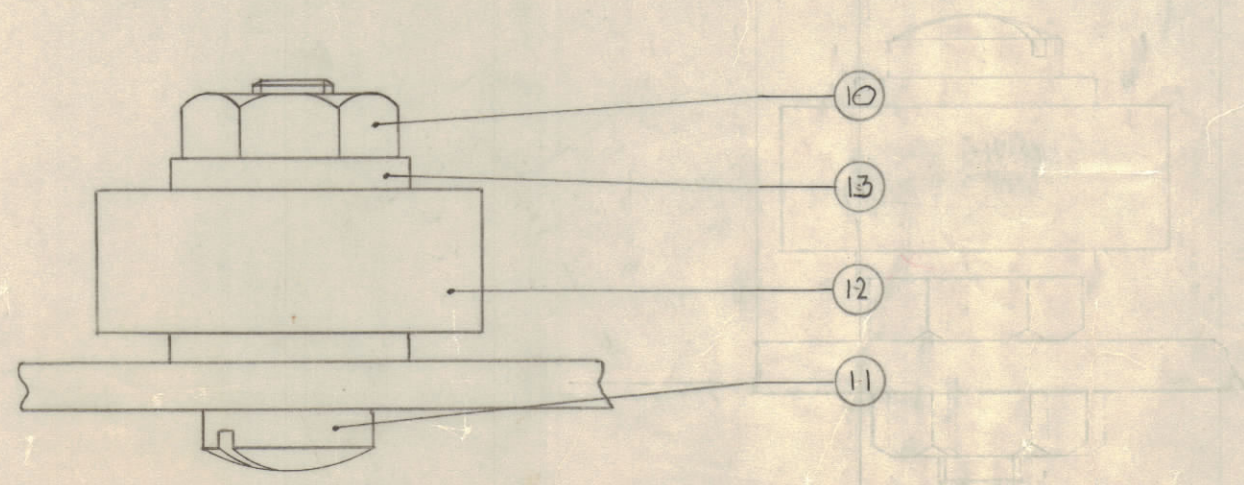
IF IT IS FOUND DESIRABLE TO CHANGE ANY TOLERANCE OR OTHER DETAIL SPECIFIED ON THIS DRAWING NOTIFY THE PURCHASER PROMPTLY.				DIMENSIONS IN INCHES UNLESS OTHERWISE SPECIFIED			
MAXIMUM ALLOWABLE TOLERANCES HAVE BEEN DETERMINED AND DEVIATIONS WILL BE CAUSE FOR REJECTION. REMOVE ALL BURRS AND SHARP EDGES.							
ISSUE	ITEM	CHANGED FROM	DATE	CN. NO.	DRAFTS	CHECKER	ENG. APP.
Ø		RELEASE TO PROD.	25 Nov 70			J.R.	
A		REVISED PER CEMN.	2nd Dec 70	872		C.T.	
B		REVISED PER CEMN.	FEB 71	920		C.T.	

REQ	ITEM	PART NO.	DESCRIPTION	SYMBOL
1	1	A10921-4	SUB-ASSY	
	2		CAPACITOR	
	3	HD10009	HEATSINK	
	4	HD10010	HEATSINK	
	5		RESISTOR	
	6		TRANSFORMER	T1,T2
	7		TRANSISTOR	Q1,Q2
	8		CHOKE	L1,L2
	9		COMPOUND HEATSINK	
	10	NT137-0440	NUT NYLON	
	11	SC143-0440B10W	SCREW NYLON	
	12	TR10011	TRANSFORMER	T1,T2
	13	PW101-3	WASHER NYLON	



FOR ELECTRICAL PART No'S SEE NUMERICAL PARTS LIST.

A10921-5-
ADD DASH No
ADD LATEST REVISION LETTER



MOUNTING DETAIL T1 & T2

TOLERANCES UNLESS OTHERWISE SPECIFIED	SCALE: 4/1
ALL DEC. DIM. ± .XX ± .05	DRILL, PUNCH, COMMERCIAL STOCK
OTHERS FRACTIONAL DIM. ± .XX ± .01	SIZES AND MANUFACTURERS
ANGULAR DIM. ± 0° 30'	TOLERANCES ARE NOT INCLUDED

VMC-8	084/70	15 OCT 70
MODEL	PROJECT NO.	ASSY. NO.
		DATE

STOCK SIZE		TMC (Canada) LIMITED OTTAWA ONTARIO	
MATERIAL		PC BOARD ASSY	
WEIGHT PER PC		OUTPUT	
TYPE & TEMPER		PROCTOR	
DRAWN		ELEC. DES. APP.	MECH. DES. APP.
HEAT TREAT SPEC.		CHECKED	FINAL APPROVAL
FINISH & SPEC. NO.		SHT 5 of 5	A10921-5