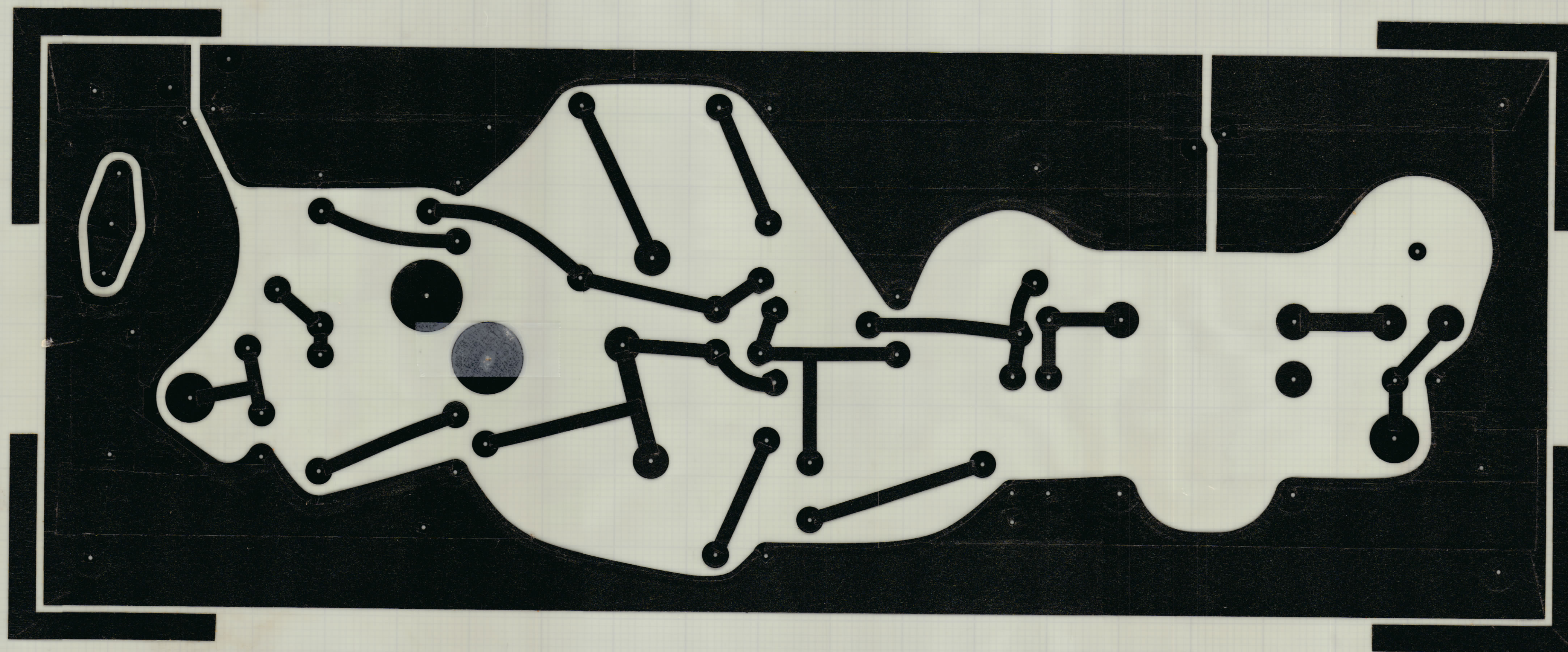
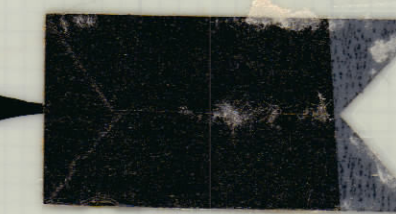




6

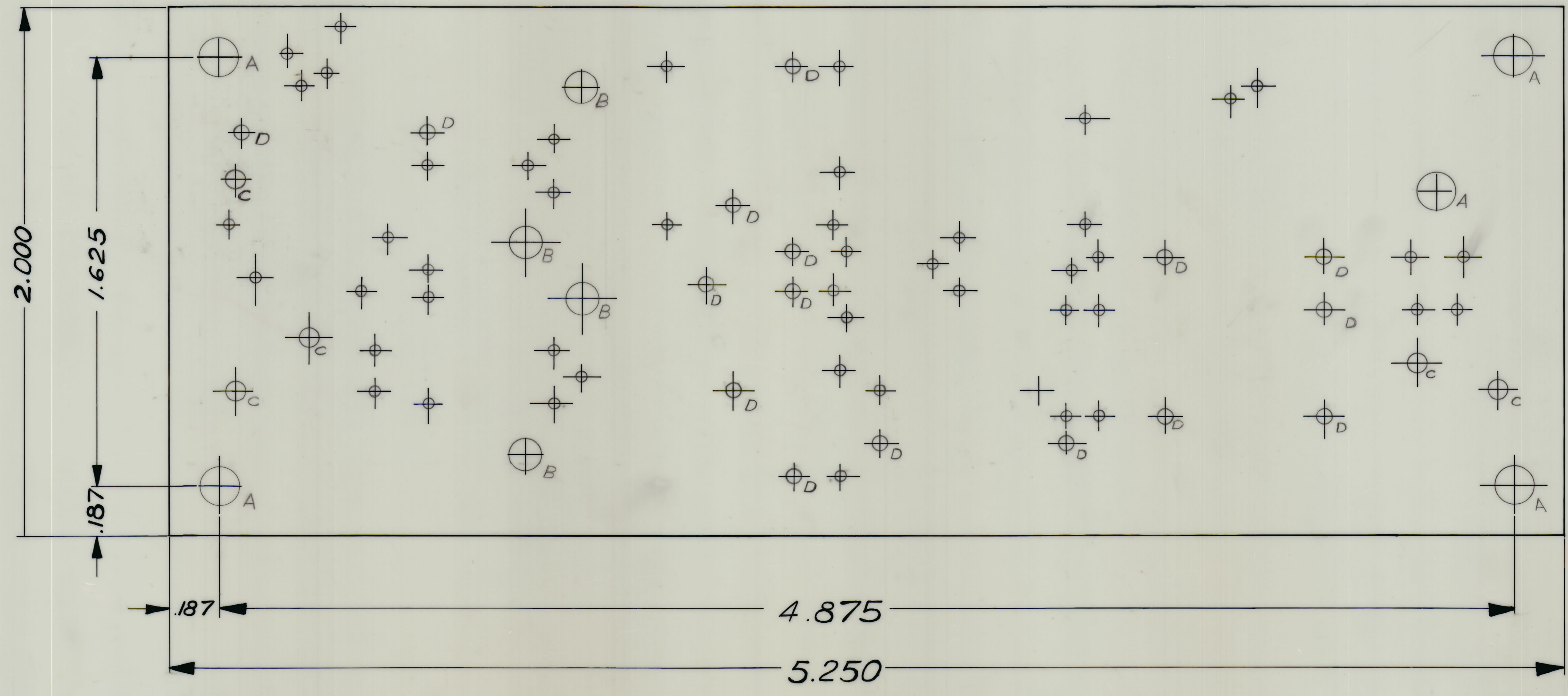


BOTTOM PATTERN  
SCALE 4:1  
NEGATIVE 1:1

A	REVISE OF CEMN	MADE 02/71	907	AP		
Ø	REL TO PROD.	MAY 8/69		AP		
ISSUE	ITEM	CHANGED FROM	DATE	CH. NO.	DRAFTER	CHECKER

AMC 32	014/69		
MAC-1	014/69		APRIL 1969
MODEL	PROJECT NO.	ASSY. NO.	DATE
USED ON			
MAXIMUM ALLOWABLE TOLERANCES HAVE BEEN DETERMINED AND DEVIATIONS WILL BE CAUSE FOR REJECTION. REMOVE ALL BURRS AND SHARP EDGES.		IF IT IS FOUND DESIRABLE TO CHANGE ANY TOLERANCE OR OTHER DETAIL SPECIFIED ON THIS DRAWING NOTIFY THE PURCHASER PROMPTLY.	
TOLERANCES		SCALE 4:1	
ALL DEC. DIM. ± .005	FRACTIONAL DIM. ± .005	DIMENSIONS IN INCHES UNLESS OTHERWISE SPECIFIED	
OTHERS	ANGULAR DIM. ± 0° 30'	DRILL: PUNCH, COMMERCIAL STOCK BURS AND MANUFACTURERS TOLERANCES ARE NOT INCLUDED.	
STOCK SIZE		TMC (Canada) LIMITED OTTAWA ONTARIO	
MATERIAL		P.C. BOARD ASSY	
WEIGHT PER PC		PRE-AMP	
TYPE & TEMPER		AP	
DRAWN		ELEC. DES. APP. MECH. DES. APP.	
HEAT TREAT SPEC.		CHECKED	
FINISH & SPEC. NO.		FINAL APPROVAL	
		SHT 1 OF 8 A107571A	

REV	ITEM	CHANGED FROM	DATE	CR. NO.	DRAFTER	CHECKER	ENR. APP.
0		REL TO PROD	MAY 21/69		AP		
A		REVISE PER CEMN	MAY 22/71	907	APP		



**NOTE:-**

1. THIS BOARD MUST MEET THE REQUIREMENTS OF T.M.C. SPECIFICATION 735.
2. MATERIAL :- PLASTIC SHEET LAMINATED COPPER CLAD FL-GE-062-C-2/0
3. FINISH :- CONDUCTIVE PATTERN TO BE PLATED WITH A MINIMUM OF .0003 THK. TIN/LEAD.

HOLE	DESCRIPTION	REQ'D
A	.140 DIA	5
B	.125 DIA	4
C	.063 ±.003 DIA.	5
D	.046 DIA.	16
UNMARKED	.035 DIA.	74

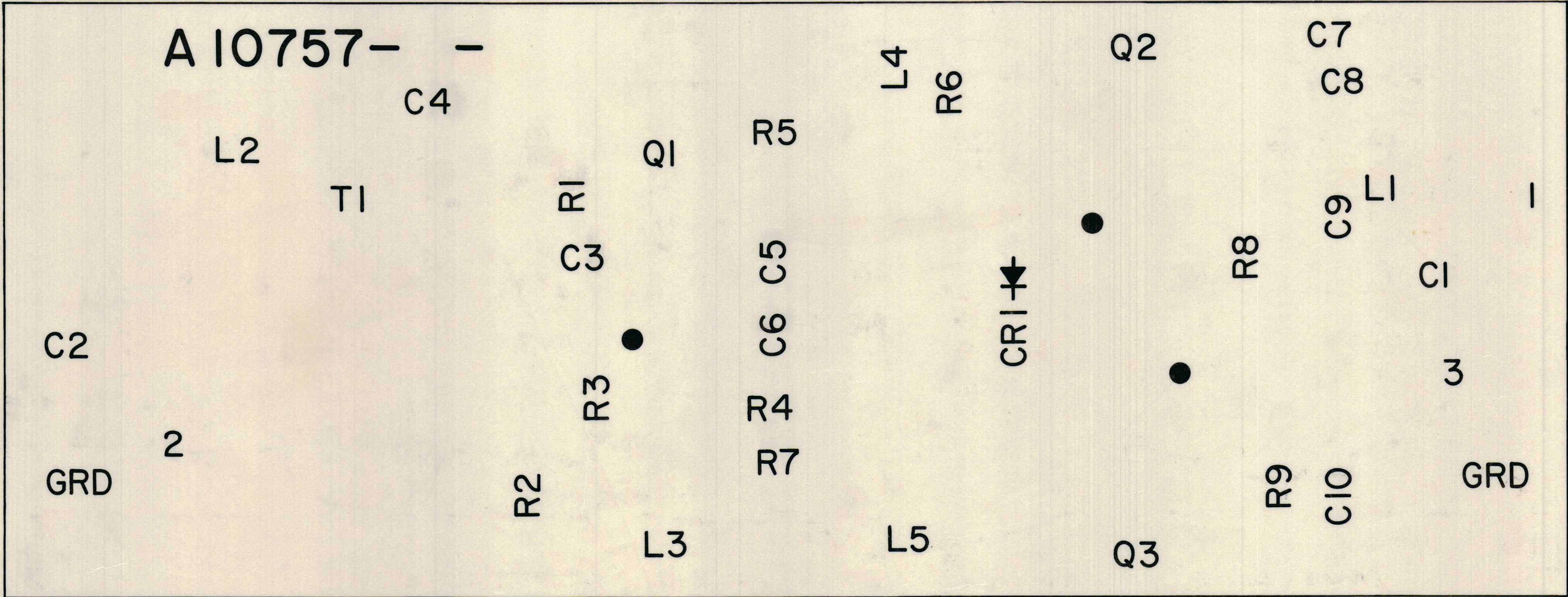
**SCALE 4:1**  
**BOTTOM PATTERN**

AMC 32	074/69		
MODEL	MAC-1	PROJECT NO.	074/69
		DATE	APR 22/69
USED ON			
MAXIMUM ALLOWABLE TOLERANCES HAVE BEEN DETERMINED AND DEVIATIONS WILL BE CAUSE FOR REJECTION. REMOVE ALL BURRS AND SHARP EDGES.		IF IT IS FOUND DESIRABLE TO CHANGE ANY TOLERANCE OR OTHER DETAIL SPECIFIED ON THIS DRAWING NOTIFY THE PURCHASER PROMPTLY.	
TOLERANCES		SCALE 4:1	
ALL	DEC. DIM. ± .015	DIMENSIONS IN INCHES UNLESS OTHERWISE SPECIFIED	
OTHER	FRACTIONAL DIM. ± 1/64	DRILL PUNCH COMMERCIAL STOCK SIZES AND MANUFACTURERS TOLERANCES ARE NOT INCLUDED.	
FINISH & SPEC. NO.		FINISH & SPEC. NO.	
STOCK SIZE		MATERIAL WEIGHT PER PC.	
TYPE & TEMPER		HEAT TREAT SPEC.	
CHECKED		FINAL APPROVAL	
TMC (Canada) LIMITED OTTAWA ONTARIO		P.C. BOARD ASS'Y PRE-AMP	
DRAWN		ELEC. DES. APP.	
MESH. DES. APP.		MESH. DES. APP.	
SIMPSON		SIMPSON	
SHEET 2 of 8		A107372 A	

IF IT IS FOUND DESIRABLE TO CHANGE ANY TOLERANCE OR OTHER DETAIL SPECIFIED ON THIS DRAWING NOTIFY THE PURCHASER PROMPTLY.						DIMENSIONS IN INCHES UNLESS OTHERWISE SPECIFIED	
MAXIMUM ALLOWABLE TOLERANCES HAVE BEEN DETERMINED AND DEVIATIONS WILL BE CAUSE FOR REJECTION. REMOVE ALL BURRS AND SHARP EDGES.							
ISSUE	ITEM	CHANGED FROM	DATE	CN. NO.	DRAFTS	CHECKER	ENG. APP.
Ø		REL TO PROD	MAY 8/69		AP		
A		REVISE PER CEMN	MAR 22/71	907	AFP		

A10757-3 A

REQ.	ITEM	PART NO.	DESCRIPTION	SYMBOL
------	------	----------	-------------	--------



SCALE 4:1  
NEGATIVE 1:1  
REF. TOP PATTERN

LETTERING NOTES:-

- 1) WHITE EPOXY PAINT
- 2) HEIGHT OF CHARACTERS .093 <sup>+0.015</sup> <sub>-.000</sub>
- 3) WIDTH OF LINES .015 <sup>+0.010</sup> <sub>-.000</sub>
- 4) AS PER TMC SPEC. S727
- 5) DOT 1/16 DIA.
- 6) HEIGHT OF BOARD NO. CHARACTERS .125 <sup>+0.015</sup> <sub>-.000</sub>
- 7) LINE WIDTH OF BOARD NO. CHARACTERS .020 <sup>+0.010</sup> <sub>-.005</sub>

TOLERANCES UNLESS OTHERWISE SPECIFIED		SCALE: 4:1
ALL	DEC. DIM. ± .XX = .01	DRILL, PUNCH, COMMERCIAL STOCK SIZES AND MANUFACTURERS TOLERANCES ARE NOT INCLUDED.
OTHERS	FRAC. DIM. ± 1/64 .XX = .01	
	ANGULAR DIM. ± 0° 30' .XXX = .005	

AMC 32	074/69		
MAC-1	074/69	APR 22/69	
MODEL	PROJECT NO.	ASS'Y. NO.	DATE

STOCK SIZE		TMC (Canada) LIMITED OTTAWA ONTARIO	
MATERIAL		P.C. ASS'Y PRE-AMP	
WEIGHT PER PC		(INPUT)	
TYPE & TEMPER		AP	
DRAWN		ELEC. DES. APP.	MECH. DES. APP.
HEAT TREAT. SPEC.		FINAL APPROVAL	
CHECKED		SHT 3 of 8 A10757-3 A	
FINISH & SPEC. NO.			

IF IT IS FOUND DESIRABLE TO CHANGE ANY TOLERANCE OR OTHER DETAIL SPECIFIED ON THIS DRAWING NOTIFY THE PURCHASER PROMPTLY		DIMENSIONS IN INCHES UNLESS OTHERWISE SPECIFIED					
MAXIMUM ALLOWABLE TOLERANCES HAVE BEEN DETERMINED AND DEVIATIONS WILL BE CAUSE FOR REJECTION. REMOVE ALL BURRS AND SHARP EDGES							
ISSUE	ITEM	CHANGED FROM	DATE	CN NO	DRAFTS	CHECKER	ENG APP
Ø		REL TO PROD	MAY 5/69		AP		
A		REVISE PER CEMN	MAR 22/71	907	APP		

A 10757-6 A

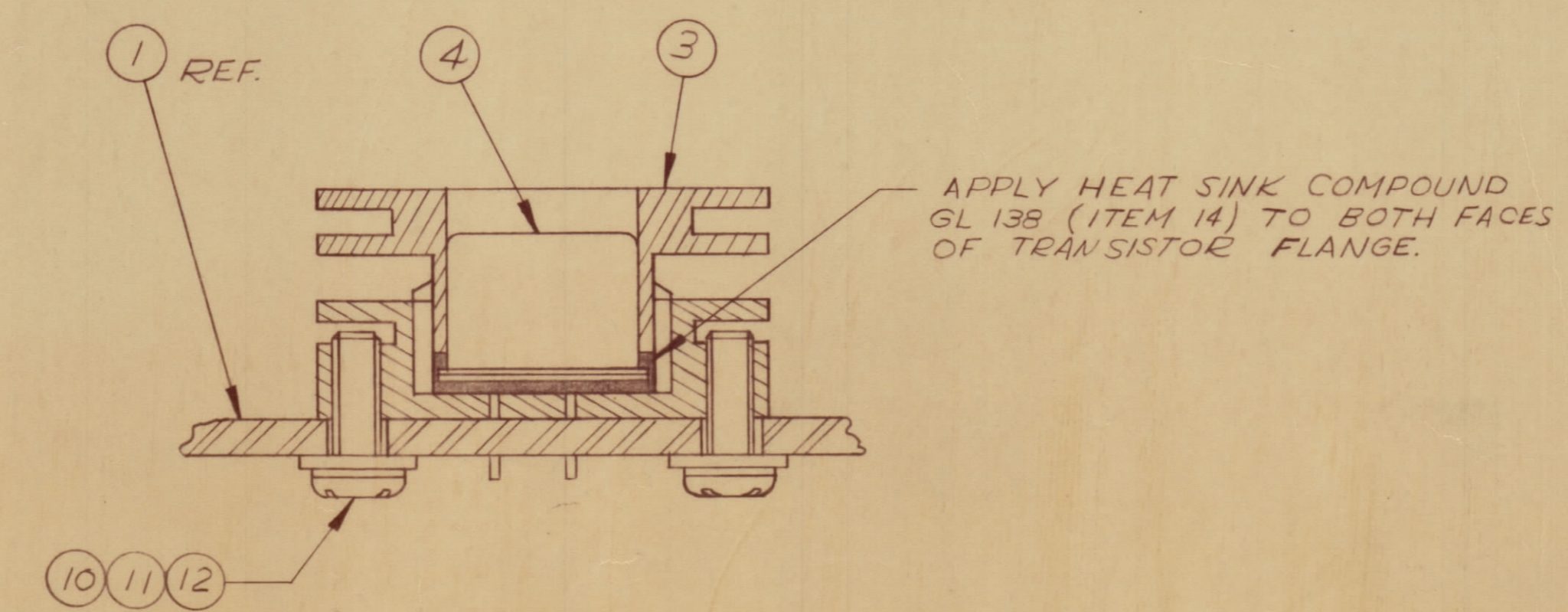
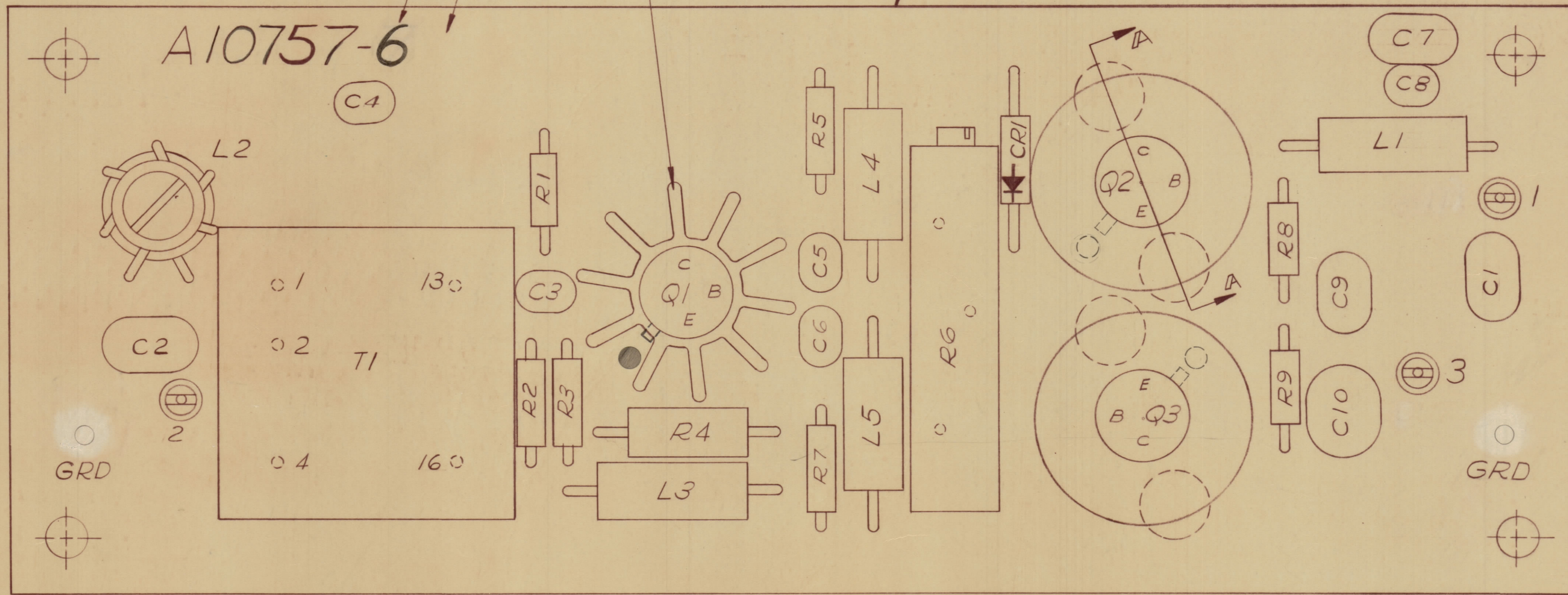
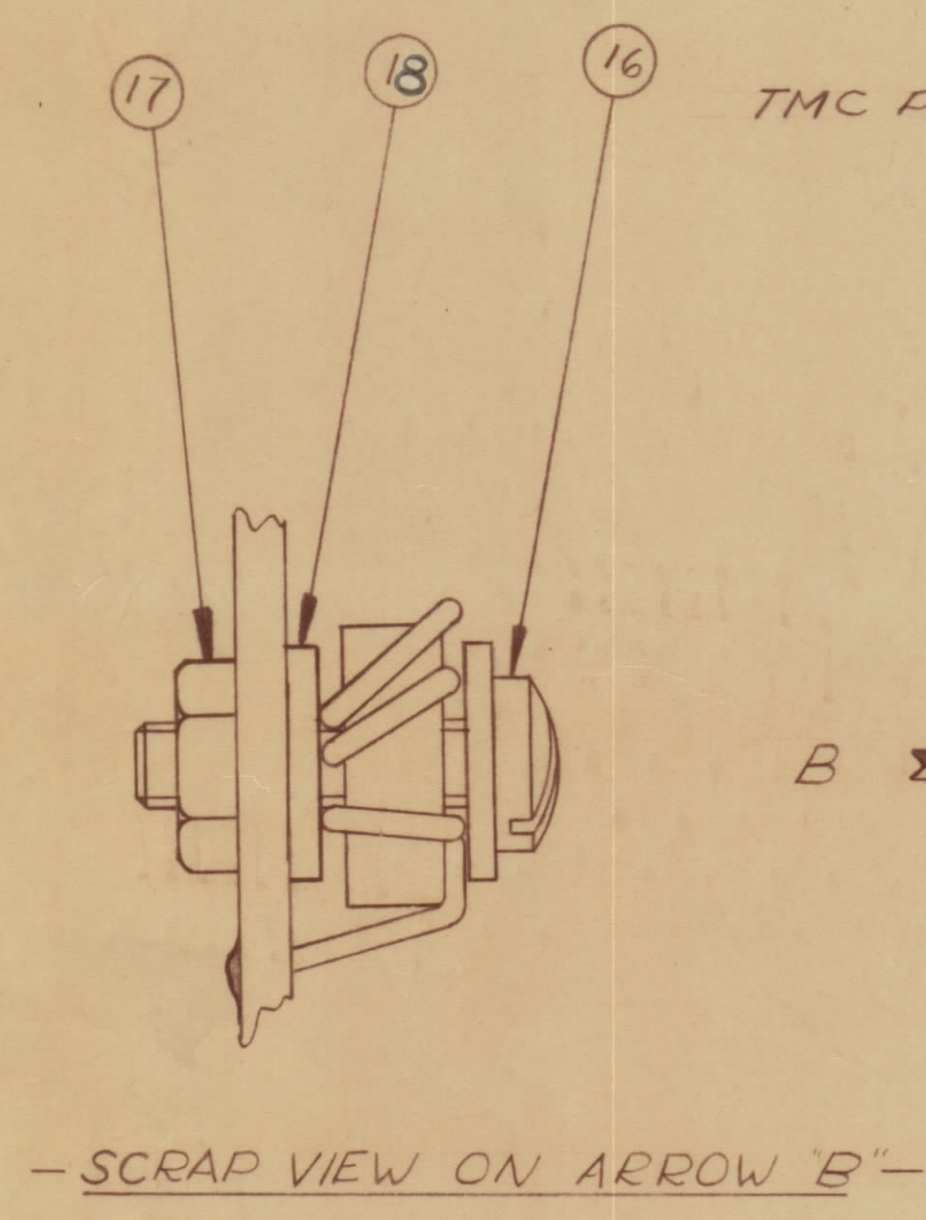
REQ	ITEM	PART NO.	DESCRIPTION	SYMBOL
1	1	A 10757-4	P.C. ASS'Y (SUB) PRE-AMP	
1	2	HD 10002-7	HEAT SINK	
2	3	HD 10004	HEAT SINK	
3	4		TRANSISTOR	Q1, Q2, Q3
8	5		RESISTOR FIXED	
1	6		RESISTOR VARIABLE	R6
10	7		CAPACITOR	
1	8		DIODE	CR1
5	9		COIL RF	
4	10	FW02 HBN	WASHER - FLAT	
4	11	LWS 02 MRN	WASHER - LOCK-SPLIT	
4	12	SCBP0256B4	SCREW	
1	13	PX829-1	PAD TRANSISTOR MT'G	
AR	14	GL 138	COMPOUND, SILICONE HS.	
1	15		TRANSFORMER	T1
1	16	SC143-0440-BBW	SCREW	
1	17	NT137-0440	NUT	
2	18	FW 101-3	WASHER	

R1, R2, R3, R4, R5, R7, R8, R9,  
C1, C2, C3, C4, C5, C6, C7, C8, C9, C10  
L1, L2, L3, L4, L5

NOTE:-  
FOR ELECTRICAL PART NO.'S  
REF. TO NUMERICAL PARTS LIST

TMC PART NO. COMPLETE WITH LATEST REV LETTER  
ADD DASH NUMBER

APPLY HEAT SINK  
COMPOUND GL 138  
(ITEM 14) TO SIDE  
FACE OF Q1.



SECTION A-A  
TYPICAL ASS'Y FOR Q2 & Q3

TOLERANCES UNLESS OTHERWISE SPECIFIED		SCALE: 4:1	
ALL	DEC DIM ± .05		DRILL, PUNCH, COMMERCIAL STOCK
OTHERS	FRAC DIM ± .01		SIZES AND MANUFACTURERS
	ANGULAR DIM ± 0° 30'	XXX ± .005	TOLERANCES ARE NOT INCLUDED

MAC-1	074/69	APR 21/69
MODEL	PROJECT NO	DATE
	ASS'Y NO	

STOCK SIZE		TMC (Canada) LIMITED OTTAWA ONTARIO	
MATERIAL		P.C. ASS'Y PRE-AMP INPUT	
TYPE & TEMPER		AP	
HEAT TREAT SPEC		DRAWN	ELEC DES APP
FINISH & SPEC NO		CHKD	FINAL APPROVAL

A 10757-7 A

IF IT IS FOUND DESIRABLE TO CHANGE ANY TOLERANCE OR OTHER DETAIL SPECIFIED ON THIS DRAWING NOTIFY THE PURCHASER PROMPTLY.				DIMENSIONS IN INCHES UNLESS OTHERWISE SPECIFIED			
MAXIMUM ALLOWABLE TOLERANCES HAVE BEEN DETERMINED AND DEVIATIONS WILL BE CAUSE FOR REJECTION. REMOVE ALL BURRS AND SHARP EDGES.							
ISSUE	ITEM	CHANGED FROM	DATE	CN. NO.	DRAFTS	CHECKER	ENG. APP.
Ø		REL TO PROD	MAY 5/69		AP		
A		REVISE PER CEMN	MAY 22/71	907	AFP		

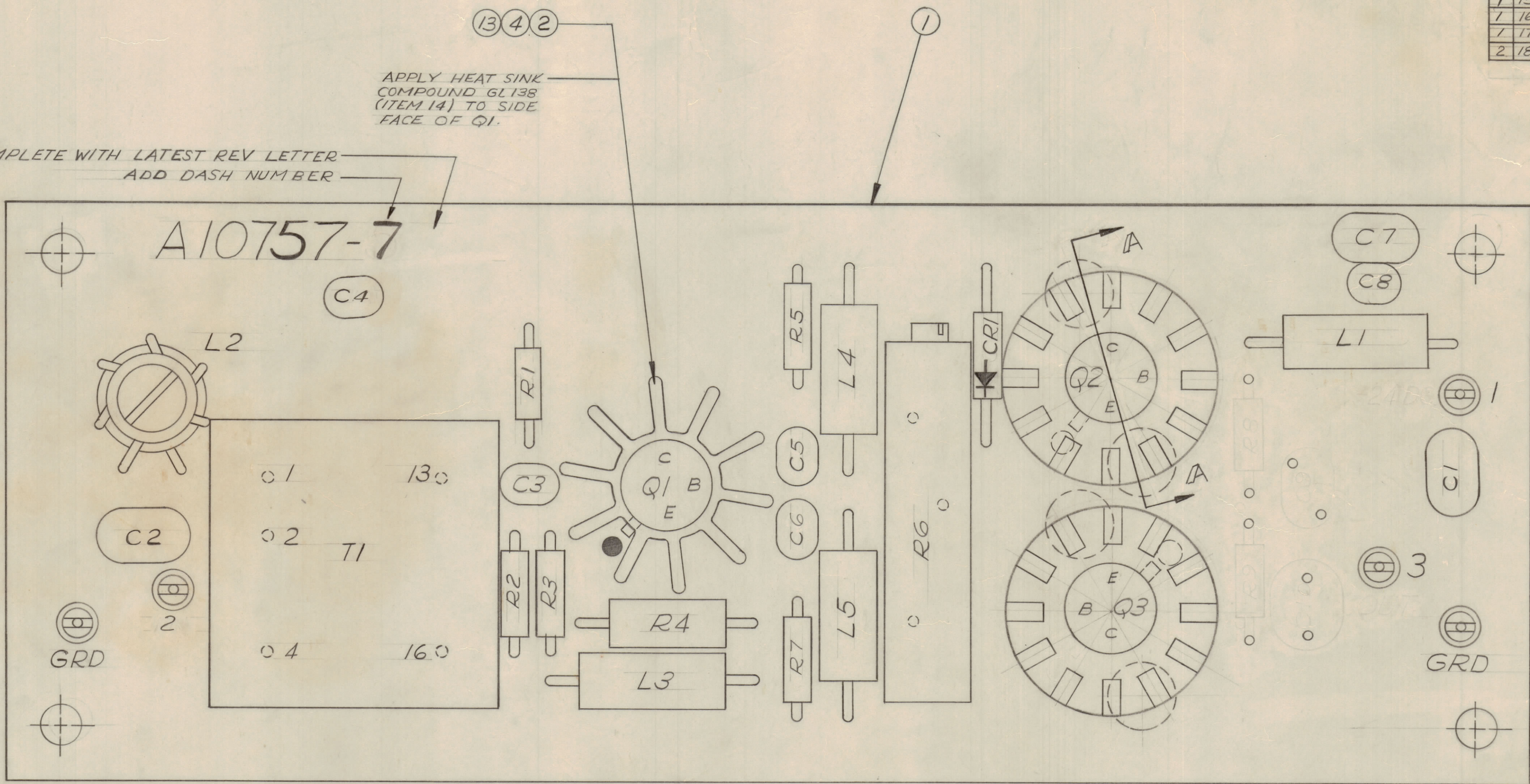
REQ	ITEM	PART NO.	DESCRIPTION	SYMBOL
1	1	A 10757-5	P.C. ASS'Y (SUB) PRE-AMP	
1	2	HD 10002-7	HEAT SINK	
2	3	HD 10007	HEAT SINK	
3	4		TRANSISTOR	Q1, Q2, Q3
6	5		RESISTOR FIXED	
1	6		RESISTOR VARIABLE	R6
8	7		CAPACITOR	
1	8		DIODE	CR1
5	9		COIL RF	
4	10	FW 02 HBN	WASHER - FLAT	
4	11	LWS 02 MRN	WASHER - LOCK-SPLIT	
4	12	SCBP0256BWA	SCREW	
1	13	PX 829-1	PAD TRANSISTOR MTE	
AR	14	GL 138	COMPOUND, SILICONE HS.	
1	15		TRANSFORMER	T1
1	16	SC143-0440-B8W	SCREW	
1	17	NT137-0440	NUT	
2	18	FW 101-3	WASHER	

R1, R2, R3, R4, R5, R7  
 C1, C2, C3, C4, C5, C6, C7, C8,  
 L1, L2, L3, L4, L5

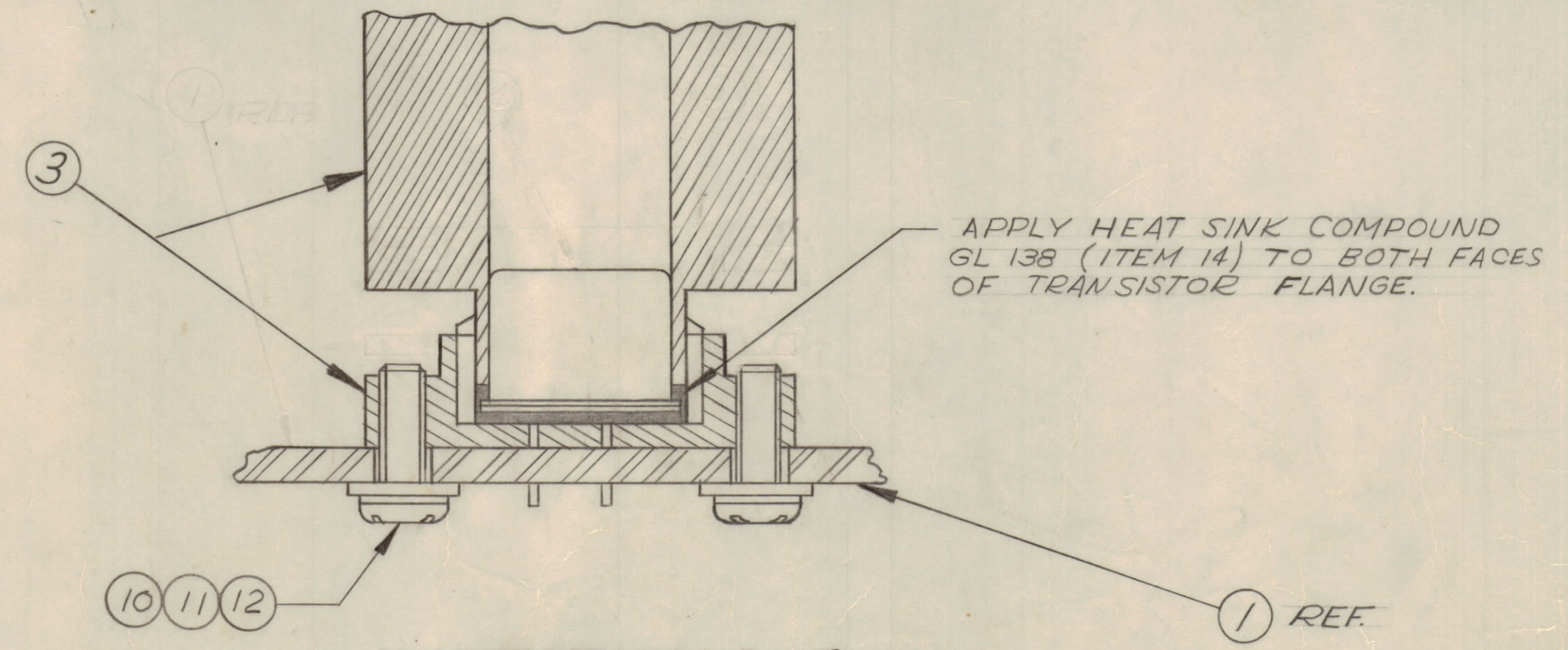
NOTE:-  
 FOR ELECTRICAL PART NO.'S  
 REF. TO NUMERICAL PARTS LIST.

TMC PART NO. COMPLETE WITH LATEST REV LETTER  
 ADD DASH NUMBER

APPLY HEAT SINK  
 COMPOUND GL 138  
 (ITEM 14) TO SIDE  
 FACE OF Q1.



- SCRAP VIEW ON ARROW "B" -



TOLERANCES UNLESS OTHERWISE SPECIFIED		SCALE: 4:1
ALL	DEC. DIM. ± .05	DRILL, PUNCH, COMMERCIAL STOCK SIZES AND MANUFACTURERS TOLERANCES ARE NOT INCLUDED
OTHERS	FRAC. DIM. ± .01	
	ANGULAR DIM. ± 0° 30'	

MODEL	PROJECT NO.	ASS'Y. NO.	DATE
AMC-32	074/69		APR 21/69

STOCK SIZE		TMC (Canada) LIMITED OTTAWA ONTARIO	
MATERIAL		P.C. ASS'Y PRE-AMP INPUT	
TYPE & TEMPER		AP	
DRAWN		ELEC. DES. APP.	MECH. DES. APP.
HEAT TREAT. SPEC.		FINAL APPROVAL	
FINISH & SPEC. NO.		SHT. 7 of 8 A 10757-7 A	