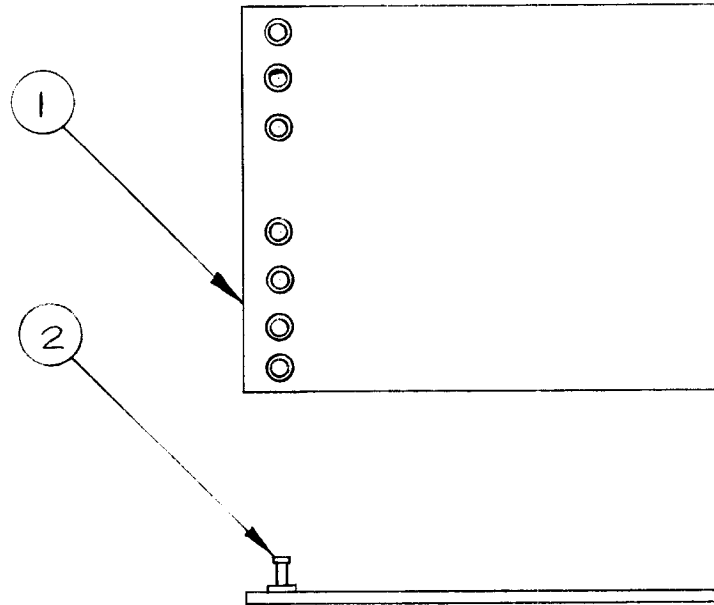


110700-4

| ISSUE | ITEM | CHANGED FROM | DATE | CN. NO. | DRAFTS | CHECKER | ENG. APP. | REQ. | ITEM | PART NO. | DESCRIPTION | SYMBOL |
|-------|------|--------------|-----------|---------|--------|---------|-----------|------|------|----------|-------------------------|--------|
| 7 | | REL TO PDU | MAR 19/68 | | RPC | NW | | 1 | 1 | A10700-3 | P.C. BD ASS'Y, METERING | |
| | | | | | | | | 7 | 2 | TE127-2 | STUD, TERMINAL | B |

NOTE:

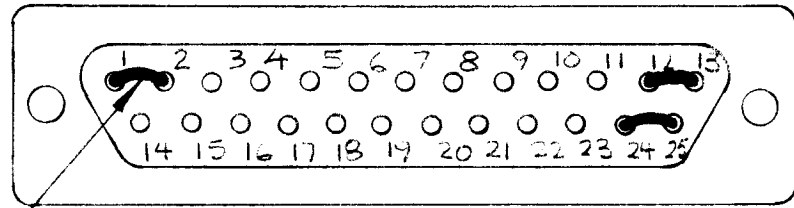
MOUNT ITEM'S 2 IN ALL B" HOLES



| | | | | | | | |
|--|---|---|------|--------------------|----------------|--|--|
| SMR-5 | | 061/68 | | MAR 14/68 | | TMC (Canada) LIMITED OTTAWA ONTARIO | |
| MODEL | PROJECT NO. | ASS'Y. NO. | DATE | STOCK SIZE | | P.C. BD ASS'Y, METERING | |
| USED ON | | | | MATERIAL | WEIGHT PER PC. | RPC | |
| MAXIMUM ALLOWABLE TOLERANCES HAVE BEEN DETERMINED AND DEVIATIONS WILL BE CAUSE FOR REJECTION. REMOVE ALL BURRS AND SHARP EDGES | | IF IT IS FOUND DESIRABLE TO CHANGE ANY TOLERANCE OR OTHER DETAIL SPECIFIED ON THIS DRAWING NOTIFY THE PURCHASER PROMPTLY. | | TYPE & TEMPER | | DRAWN | |
| TOLERANCES | | SCALE | | HEAT TREAT. SPEC. | | ELEC. DES. APP. | |
| ALL OTHERS | DEC. DIM. ± FRAC. DIM. ± ANGULAR DIM. ± | DIMENSIONS IN INCHES UNLESS OTHERWISE SPECIFIED | | FINISH & SPEC. NO. | | MECH. DES. APP. | |
| | | DRILL, PUNCH, COMMERCIAL STOCK SIZES AND MANUFACTURERS TOLERANCES ARE NOT INCLUDED. | | | | CHECKED | |
| | | | | | | FINAL APPROVAL | |
| | | | | | | SHEET 4 OF 5 | |
| | | | | | | A10700-4 | |

A 10709

| ISSUE | ITEM | CHANGED FROM | DATE | CN. NO. | DRAFTS | CHECKER | ENG. APP. | REQ. | ITEM | PART NO. | DESCRIPTION | SYMBOL |
|-------|------|--------------|------------|---------|--------|---------|-----------|------|------|------------|---------------------|--------|
| Ø | | REL TO PROD. | JUNE 11/68 | | RPL | JW | JW | 1 | 1 | PL10007-6 | CONNECTOR SUB. MIN. | |
| | | | | | | | | 1 | 2 | PO10008-AZ | CLAMP, CABLE | |
| | | | | | | | | AR | 3 | WL100-B | WIRE BUSS | |



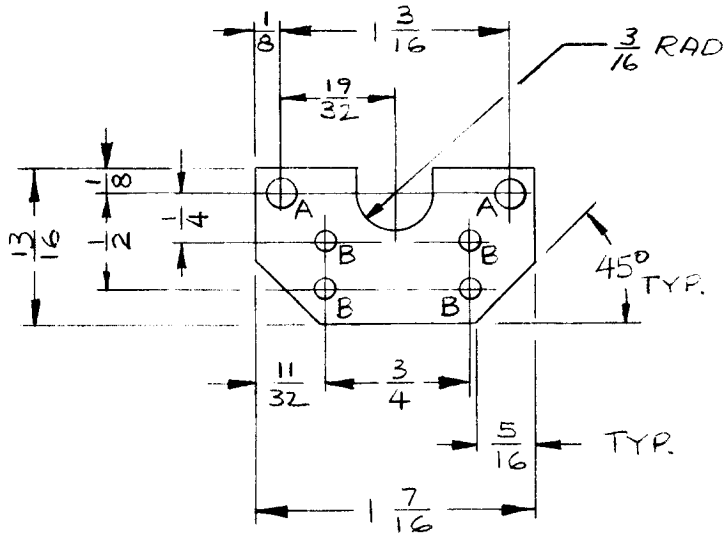
REAR VIEW

NOTE

- (1) FOR LOCAL CLARIFIER CONTROL JUMPER PIN 1 & 2
- 2) FOR CONTINUOUS OPERATION OF THE RECEIVER (NO MUTING)
JUMPER PIN 24 TO 25
- (3) FOR INTERNAL BFO CONTROL JUMPER PINS 12 & 13

| | | | | | | | |
|--|----------------|---|------|--------------------|----------------|--|-----------------|
| SMR-5 | | 061/68 | | MAR 25/68 | | TMC (Canada) LIMITED OTTAWA ONTARIO | |
| MODEL | PROJECT NO. | ASS'Y. NO. | DATE | STOCK SIZE | | CONNECTOR ASS'Y | |
| USED ON | | | | MATERIAL | WEIGHT PER PC. | (FEMALE) | |
| MAXIMUM ALLOWABLE TOLERANCES HAVE BEEN DETERMINED AND DEVIATIONS WILL BE CAUSE FOR REJECTION. REMOVE ALL BURRS AND SHARP EDGES | | IF IT IS FOUND DESIRABLE TO CHANGE ANY TOLERANCE OR OTHER DETAIL SPECIFIED ON THIS DRAWING NOTIFY THE PURCHASER PROMPTLY. | | TYPE & TEMPER | | DRAWN | MECH. DES. APP. |
| TOLERANCES | | SCALE | | HEAT TREAT. SPEC. | | CHECKED | FINAL APPROVAL |
| ALL OTHERS | DEC. DIM. ± | DIMENSIONS IN INCHES UNLESS OTHERWISE SPECIFIED | | FINISH & SPEC. NO. | | A10709 Ø | |
| | FRAC. DIM. ± | DRILL, PUNCH, COMMERCIAL STOCK SIZES AND MANUFACTURERS TOLERANCES ARE NOT INCLUDED. | | | | | |
| | ANGULAR DIM. ± | | | | | | |

| ISSUE | ITEM | CHANGED FROM | DATE | CN. NO. | DRAFTS | CHECKER | ENG. APP. | REQ. | ITEM | PART NO. | DESCRIPTION | SYMBOL |
|-------|------|-----------------|-----------|---------|--------|--------------------|--------------------|------|------|----------|-------------|--------|
| Ø | | REL TO PROD | MAR 29/68 | | AD | <i>[Signature]</i> | <i>[Signature]</i> | | | | | |
| A | | REV AS PER CEMN | DEC 1/68 | 404 | AP | <i>[Signature]</i> | <i>[Signature]</i> | | | | | |

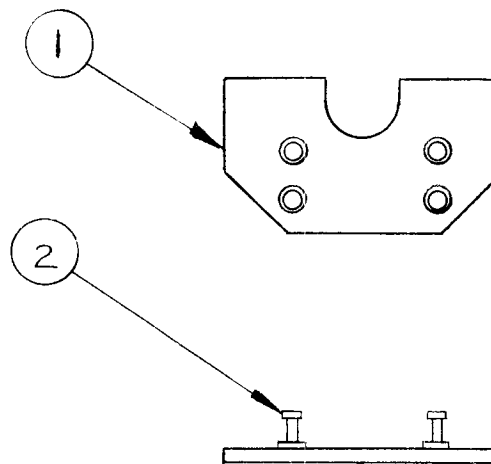


| HOLE | DESCRIPTION | REQ'D |
|------|-------------|-------|
| A | 9/64 DIA. | 2 |
| B | .081 DIA. | 4 |

NOTE.
LACQUER ALL CUT EDGES

| | | | | | | |
|--|----------------|------------|-----------|--------------------|--|-----------------|
| AMC 21 | 070/68 | A10710-2 | MAR 25/68 | .062 THK. | TMC (Canada) LIMITED OTTAWA ONTARIO | |
| MODEL | PROJECT NO. | ASS'Y. NO. | DATE | STOCK SIZE | R.F. PROTECTION BD | |
| USED ON | | | | PHENOLIC | MATERIAL | |
| MAXIMUM ALLOWABLE TOLERANCES HAVE BEEN DETERMINED AND DEVIATIONS WILL BE CAUSE FOR REJECTION. REMOVE ALL BURRS AND SHARP EDGES | | | | WEIGHT PER PC. | | RPL |
| | | | | TYPE & TEMPER | | |
| IF IT IS FOUND DESIRABLE TO CHANGE ANY TOLERANCE OR OTHER DETAIL SPECIFIED ON THIS DRAWING NOTIFY THE PURCHASER PROMPTLY. | | | | HEAT TREAT. SPEC. | | ELEC. DES. APP. |
| TOLERANCES | | | | FINISH & SPEC. NO. | | MECH. DES. APP. |
| SCALE | | | | CHECKED | | FINAL APPROVAL |
| DIMENSIONS IN INCHES UNLESS OTHERWISE SPECIFIED | | | | SHEET 1 OF 3 | | |
| DRILL, PUNCH, COMMERCIAL STOCK SIZES AND MANUFACTURERS TOLERANCES ARE NOT INCLUDED. | | | | A10710-1 | | A |
| ALL OTHERS | DEC. DIM. ± | 1/64 | | | | |
| | FRAC. DIM. ± | | | | | |
| | ANGULAR DIM. ± | | | | | |

| ISSUE | ITEM | CHANGED FROM | DATE | CN. NO. | DRAFTS | CHECKER | ENG. APP. | REQ. | ITEM | PART NO. | DESCRIPTION | SYMBOL |
|-------|------|-----------------|-----------|---------|--------|---------|-----------|------|------|----------|---------------------|--------|
| Ø | | REL TO PROD | MAR 29/68 | | AP | W | W | 1 | 1 | A10710-1 | R.F. PROTECTION BD. | |
| A | | REV AS PER CFMN | DEC 1/68 | 404 | AP | W | W | 4 | 2 | TE127-2 | STUD, TERMINAL | "B" |

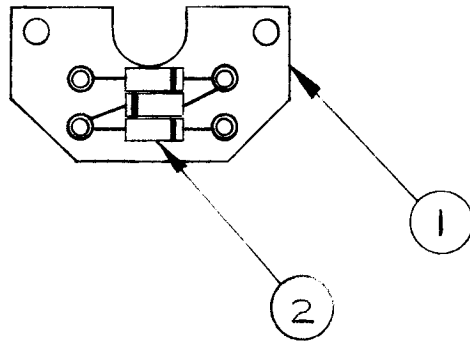


NOTE:
MOUNT ITEM'S 2 IN ALL 'B' HOLES

| | | | | | | | | | | | | | |
|--|----------------|-----------|------|---|--|----------------|--|--------------------|--|---|--|-----------------|-----------------|
| AMC 21 | | 070/63 | | A10710-4 | | MAR 25/68 | | | | TMC (Canada) LIMITED OTTAWA ONTARIO | | | |
| MODEL | PROJECT NO. | ASSY. NO. | DATE | STOCK SIZE | | | | | | | | | |
| USED ON | | | | MATERIAL | | WEIGHT PER PC. | | TYPE & TEMPER | | R.F. PROTECTION BD. | | | |
| MAXIMUM ALLOWABLE TOLERANCES HAVE BEEN DETERMINED AND DEVIATIONS WILL BE CAUSE FOR REJECTION. REMOVE ALL BURRS AND SHARP EDGES | | | | IF IT IS FOUND DESIRABLE TO CHANGE ANY TOLERANCE OR OTHER DETAIL SPECIFIED ON THIS DRAWING NOTIFY THE PURCHASER PROMPTLY. | | | | RPL | | DRAWN | | ELEC. DES. APP. | MECH. DES. APP. |
| TOLERANCES | | | | SCALE | | | | HEAT TREAT. SPEC. | | CHECKED | | FINAL APPROVAL | |
| ALL OTHERS | DEC. DIM. ± | | | DIMENSIONS IN INCHES UNLESS OTHERWISE SPECIFIED | | | | FINISH & SPEC. NO. | | SHEET 2 OF 3 | | A10710-2 | A |
| | FRAC. DIM. ± | | | DRILL, PUNCH, COMMERCIAL STOCK SIZES AND MANUFACTURERS TOLERANCES ARE NOT INCLUDED. | | | | | | | | | |
| | ANGULAR DIM. ± | | | | | | | | | | | | |

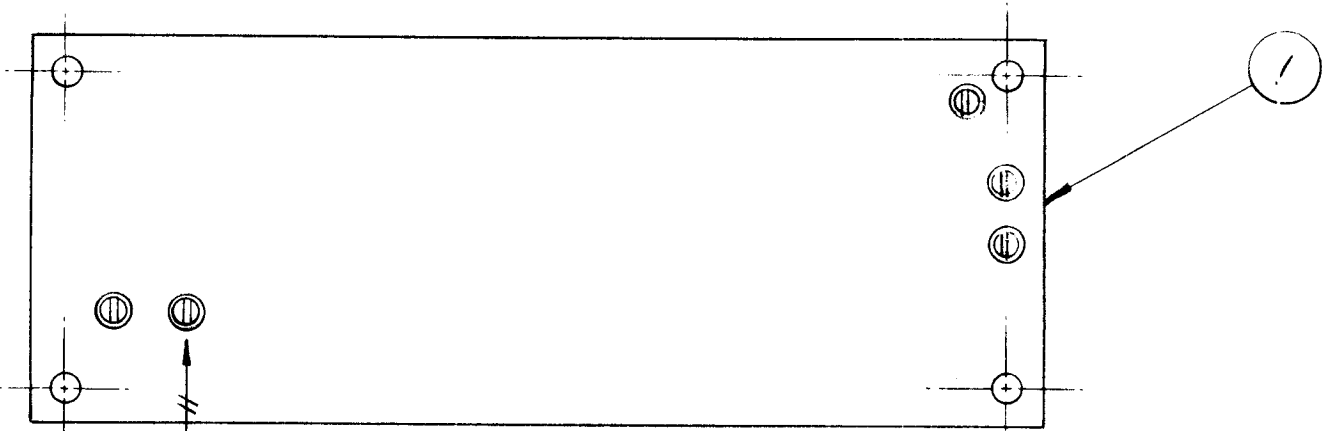
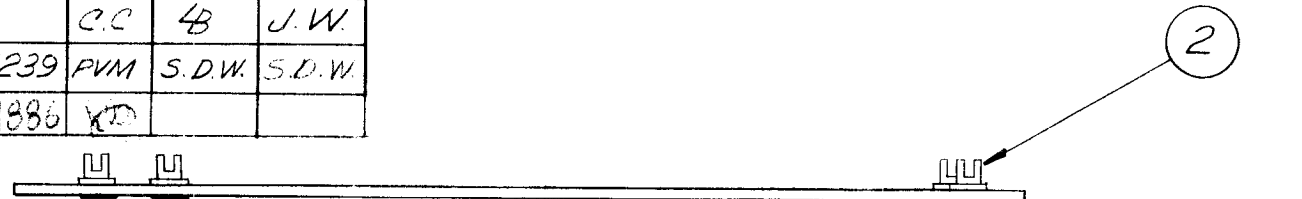
| ISSUE | ITEM | CHANGED FROM | DATE | CN. NO. | DRAFTS | CHECKER | ENG. APP. | REQ. | ITEM | PART NO. | DESCRIPTION | SYMBOL |
|-------|------|-----------------|-----------|---------|--------|--------------------|--------------------|------|------|----------|---------------------|---------------|
| Ø | | REL TO ROD | MAR 29/68 | | AP | <i>[Signature]</i> | <i>[Signature]</i> | 1 | 1 | A10710-2 | R.F. PROTECTION BD. | |
| A | | REV AS PER CEMN | DEC 11/68 | 404 | AP | <i>[Signature]</i> | <i>[Signature]</i> | 3 | 2 | | DIODE | CR1, CR2, CR3 |

NOTE:
REF. MATERIAL LIST FOR PART NO. OF ELECTRICAL COMPONENTS



| | | | | | | | | | |
|---|-------------|------------|------|---|--|--|--|-------------------|--|
| AMC 21 | | 070/68 | | MAR 25/68 | | TMC (Canada) LIMITED OTTAWA ONTARIO | | | |
| MODEL | PROJECT NO. | ASS'Y. NO. | DATE | STOCK SIZE | | | | | |
| USED ON | | | | MATERIAL | | WEIGHT PER PC. | | | |
| MAXIMUM ALLOWABLE TOLERANCES HAVE BEEN DETERMINED AND DEVIATIONS WILL BE CAUSE FOR REJECTION. REMOVE ALL BURRS AND SHARP EDGES. | | | | IF IT IS FOUND DESIRABLE TO CHANGE ANY TOLERANCE OR OTHER DETAIL SPECIFIED ON THIS DRAWING NOTIFY THE PURCHASER PROMPTLY. | | | | RF PROTECTION BD. | |
| | | | | | | | | TYPE & TEMPER | |
| TOLERANCES | | | | SCALE | | DRAWN | | | |
| ALL OTHERS DEC. DIM. ± FRAC. DIM. ± ANGULAR DIM. ± | | | | DIMENSIONS IN INCHES UNLESS OTHERWISE SPECIFIED | | ELEC. DES. APP. | | | |
| | | | | DRILL, PUNCH, COMMERCIAL STOCK SIZES AND MANUFACTURERS TOLERANCES ARE NOT INCLUDED. | | MECH. DES. APP. | | | |
| | | | | HEAT TREAT. SPEC. | | CHECKED | | | |
| | | | | FINISH & SPEC. NO. | | FINAL APPROVAL | | | |
| | | | | | | SHEET 3 OF 3 | | | |
| | | | | | | A10710-4 | | | |
| | | | | | | A | | | |

| ISSUE | ITEM | CHANGED FROM | DATE | CH. NO. | DRAFTS | CHECKER | ENG. APP. | REQ. | ITEM | PART NO. | DESCRIPTION | SYMBOL |
|-------|------|-----------------|------------|---------|--------|---------|-----------|------|------|------------|---------------------------|--------|
| Φ | | PROD RELEASE | 29 JAN 69 | | P.S. | | J.W. | 1 | 1 | A-10735-3 | P.C. ASSY (LETT.) PREAMP | |
| A | | REV PER CEMIN | 11 MAR 69 | | A.P. | | J.W. | 5 | 2 | TE 10023-3 | TERM. SOLDER (BIFURCATED) | |
| B | | REV PER CEMIN | 28 APR 69 | | P.S. | | J.W. | | | | | |
| C | | REV PER CEMIN | 17 FEB 70 | 721 | AFP | | P.S. | | | | | |
| D | | REV PER CEMIN | MAR 18/70 | 742 | AFP | | P.S. | | | | | |
| E | | SEE SHEET 2 | 17 MAR 72 | | C.C. | 4B | J.W. | | | | | |
| F | | REV PER CEMIN | 12 JUNE 73 | 1239 | PVM | S.D.W. | S.D.W. | | | | | |
| G | | L6 AREA REVISED | 6/23/81 | 21886 | XD | | | | | | | |
| H | | SHEET 6 OF 8 | | | | | | | | | | |



INSTALL (ITEM 2) AS SHOWN
(DIRECTION OF SLOT)

| | |
|--------|--------|
| AMC 32 | 074/69 |
| AMC 8 | 074/69 |

| | | | |
|-------|------------|-----------|-----------|
| MODEL | PROJECT NO | ASSY. NO. | DATE |
| | | | DEC 18/68 |

USED ON

MAXIMUM ALLOWABLE TOLERANCES HAVE BEEN DETERMINED AND DEVIATIONS WILL BE CAUSE FOR REJECTION. REMOVE ALL BURRS AND SHARP EDGES

IF IT IS FOUND DESIRABLE TO CHANGE ANY TOLERANCE OR OTHER DETAIL SPECIFIED ON THIS DRAWING NOTIFY THE PURCHASER PROMPTLY.

| | | |
|-----------------------|-----------|---|
| TOLERANCES | SCALE 1/1 | DIMENSIONS IN INCHES UNLESS OTHERWISE SPECIFIED |
| DEC. DIM. ± .05 | | DRILL: PUNCH, COMMERCIAL STOCK SIZES AND MANUFACTURERS TOLERANCES ARE NOT INCLUDED. |
| FRAC. DIM. ± 1/64 | | |
| ANGULAR DIM. ± 0° 30' | | |

| | |
|--------------------|----------------|
| STOCK SIZE | |
| MATERIAL | WEIGHT PER PC. |
| TYPE & TEMPER | |
| HEAT TREAT. SPEC. | |
| FINISH & SPEC. NO. | |

TMC (Canada) LIMITED
OTTAWA ONTARIO

PRINTED CIRCUIT (SUB) ASSY

PRE AMP

AP J W

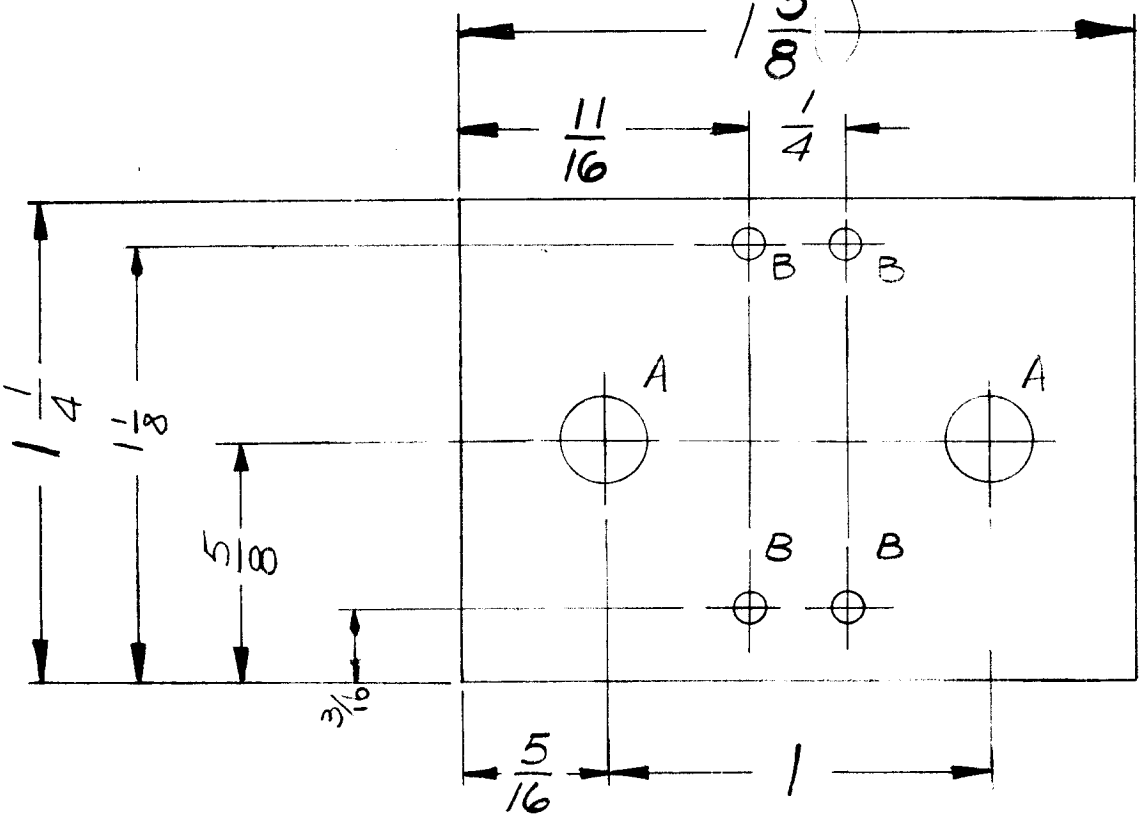
DRAWN ELEC. DES. APP. MECH. DES. APP.

CHECKED FINAL APPROVAL

SHT 4 of 8 A-10735-4 H

A 10737-1

| ISSUE | ITEM | CHANGED FROM | DATE | CN. NO. | DRAFTS | CHECKER | ENG. APP. | REQ. | ITEM | PART NO. | DESCRIPTION | SYMBOL |
|-------|------|--------------|-----------|---------|--------|---------|-----------|------|------|----------|-------------|--------|
| Ø | | REL TO PROD | SEPT 3/68 | | AD | | | | | | | |
| Δ | | REV PER CMN | MAY 20/69 | 479 | ΔHa | | | | | | | |



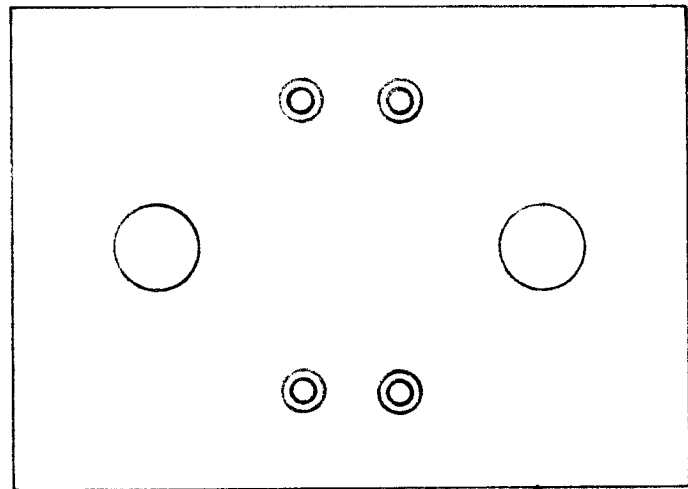
NOTE:
 'A' HOLES 13/64 DIA. 2 REQ'D
 'B' HOLES .081 DIA. 4 REQ'D

NOTE:
 LACQUER ALL CUT EDGES

| | | | | | | | | | | | | |
|--|--|-------------|--|---|--|-----------|--|--------------------|--|----------------------|--|-----------------|
| MDTM-1 | | 070168 | | A10737-2 | | 4UG 23/68 | | .062 THICK | | TMC (Canada) LIMITED | | |
| MODEL | | PROJECT NO. | | ASS'Y. NO. | | DATE | | STOCK SIZE | | OTTAWA | | ONTARIO |
| USED ON | | | | | | | | | | METERING BOARD | | |
| MAXIMUM ALLOWABLE TOLERANCES HAVE BEEN DETERMINED AND DEVIATIONS WILL BE CAUSE FOR REJECTION. REMOVE ALL BURRS AND SHARP EDGES | | | | IF IT IS FOUND DESIRABLE TO CHANGE ANY TOLERANCE OR OTHER DETAIL SPECIFIED ON THIS DRAWING NOTIFY THE PURCHASER PROMPTLY. | | | | PHENOLIC | | | | |
| | | | | | | | | MATERIAL | | WEIGHT PER PC. | | |
| | | | | | | | | TYPE & TEMPER | | | | AP |
| | | | | | | | | HEAT TREAT. SPEC. | | | | DRAWN |
| | | | | | | | | FINISH & SPEC. NO. | | | | ELEC. DES. APP. |
| | | | | | | | | | | | | MECH. DES. APP. |
| TOLERANCES | | | | SCALE 2:1 | | | | | | | | CHECKED |
| ALL OTHERS | | | | DIMENSIONS IN INCHES UNLESS OTHERWISE SPECIFIED | | | | | | | | FINAL APPROVAL |
| | | | | DRILL, PUNCH, COMMERCIAL STOCK SIZES AND MANUFACTURERS TOLERANCES ARE NOT INCLUDED. | | | | | | | | |
| | | | | | | | | | | | | SHEET 1 of 3 |
| | | | | | | | | | | | | A10737-1 |
| | | | | | | | | | | | | A |

A10737-3

| ISSUE | ITEM | CHANGED FROM | DATE | CN. NO. | DRAFTS | CHECKER | ENG. APP. | REQ. | ITEM | PART NO. | DESCRIPTION | SYMBOL |
|-------|------|------------------|-----------|---------|--------|---------|--------------|------|------|----------|----------------|--------|
| Ø | | REL TO PROD | SEPT 3/68 | | AP | | W | 1 | 1 | A10737-1 | METERING BOARD | |
| Δ | | REV. AS PER CEMN | MAY 20-68 | 479 | Att. F | | W | 4 | 2 | TE 127-2 | STUD, TERMINAL | "B" |



NOTE:-
MOUNT ITEM'S 2 IN ALL "B" HOLES.

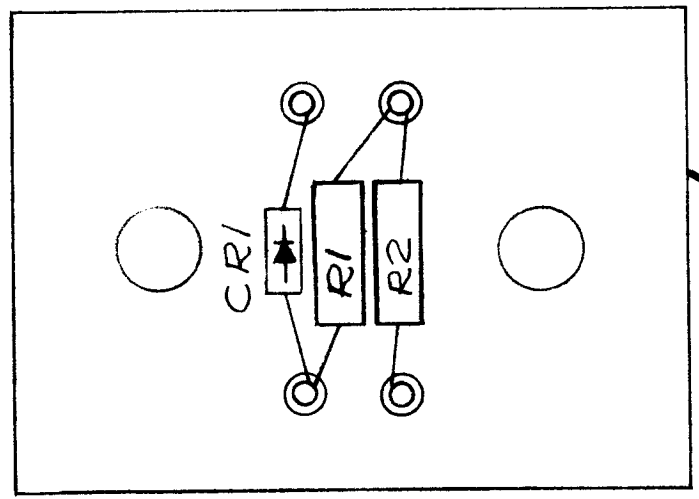
1

2

| | | | | | | | | | | | | | |
|--|--|----------------|--|---|--|----------------|--|--------------------|--|----------------------|--|-----------------|--|
| MDTM-1 | | 070168 | | A10737-4 | | AUG 23/68 | | | | TMC (Canada) LIMITED | | OTTAWA ONTARIO | |
| MODEL | | PROJECT NO. | | ASS'Y. NO. | | DATE | | STOCK SIZE | | METERING BOARD | | | |
| USED ON | | | | MATERIAL | | WEIGHT PER PC. | | TYPE & TEMPER | | AP | | | |
| MAXIMUM ALLOWABLE TOLERANCES HAVE BEEN DETERMINED AND DEVIATIONS WILL BE CAUSE FOR REJECTION. REMOVE ALL BURRS AND SHARP EDGES | | | | IF IT IS FOUND DESIRABLE TO CHANGE ANY TOLERANCE OR OTHER DETAIL SPECIFIED ON THIS DRAWING NOTIFY THE PURCHASER PROMPTLY. | | | | | | DRAWN | | | |
| TOLERANCES | | | | SCALE 2:1 | | | | HEAT TREAT. SPEC. | | ELEC. DES. APP. | | MECH. DES. APP. | |
| ALL OTHERS | | DEC. DIM. ± | | DIMENSIONS IN INCHES UNLESS OTHERWISE SPECIFIED | | | | FINISH & SPEC. NO. | | CHECKED | | FINAL APPROVAL | |
| | | FRAC. DIM. ± | | DRILL, PUNCH, COMMERCIAL STOCK SIZES AND MANUFACTURERS TOLERANCES ARE NOT INCLUDED. | | | | | | SHEET 2 of 3 | | A10737-3 | |
| | | ANGULAR DIM. ± | | | | | | | | | | A | |

10737-4

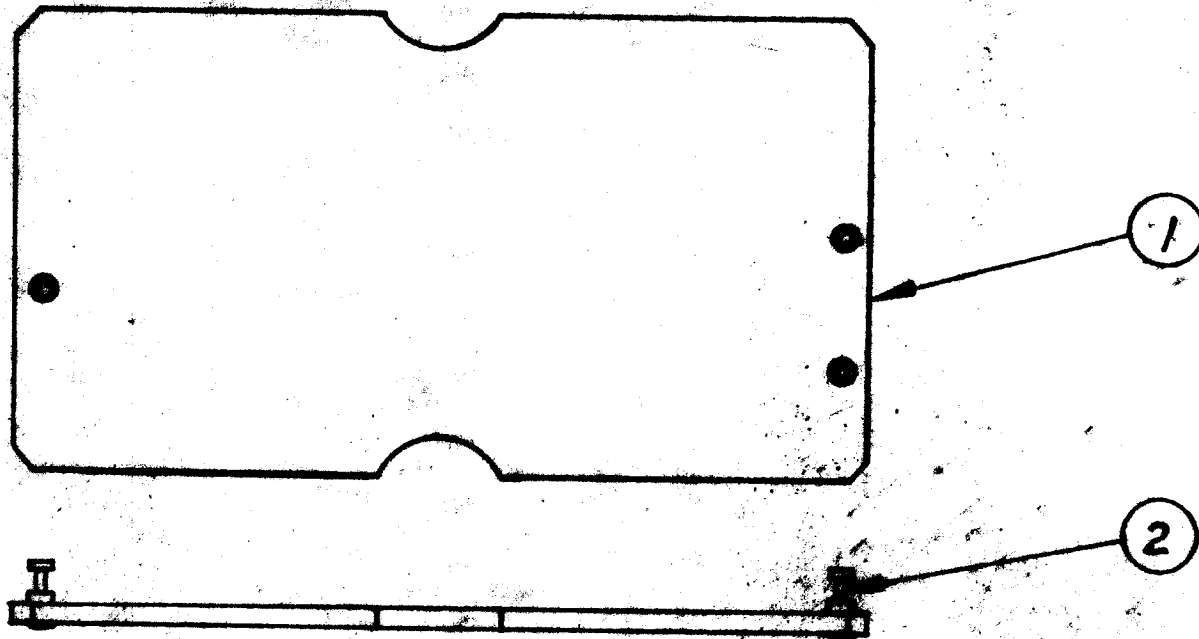
| ISSUE | ITEM | CHANGED FROM | DATE | CN. NO. | DRAFTS | CHECKER | ENG. APP. | REQ. | ITEM | PART NO. | DESCRIPTION | SYMBOL |
|-------|------|--------------|-----------|---------|--------|---------|-----------|------|------|----------|----------------|--------|
| Ø | | REL TO PROD | SEPT 3/68 | | AP | | | 1 | 1 | A10737-2 | METERING BOARD | |
| A | | REV PER CEMN | MAY 20/69 | 479 | Atta | | | 1 | 2 | | RESISTOR FIXED | R2 |
| | | | | | | | | 1 | 3 | | RESISTOR FIXED | R1 |
| | | | | | | | | 1 | 4 | | DIODE | CRI |



NOTE:-
REF. MATERIAL LIST FOR
PART NO.'S OF ELECTRICAL
COMPONENTS.

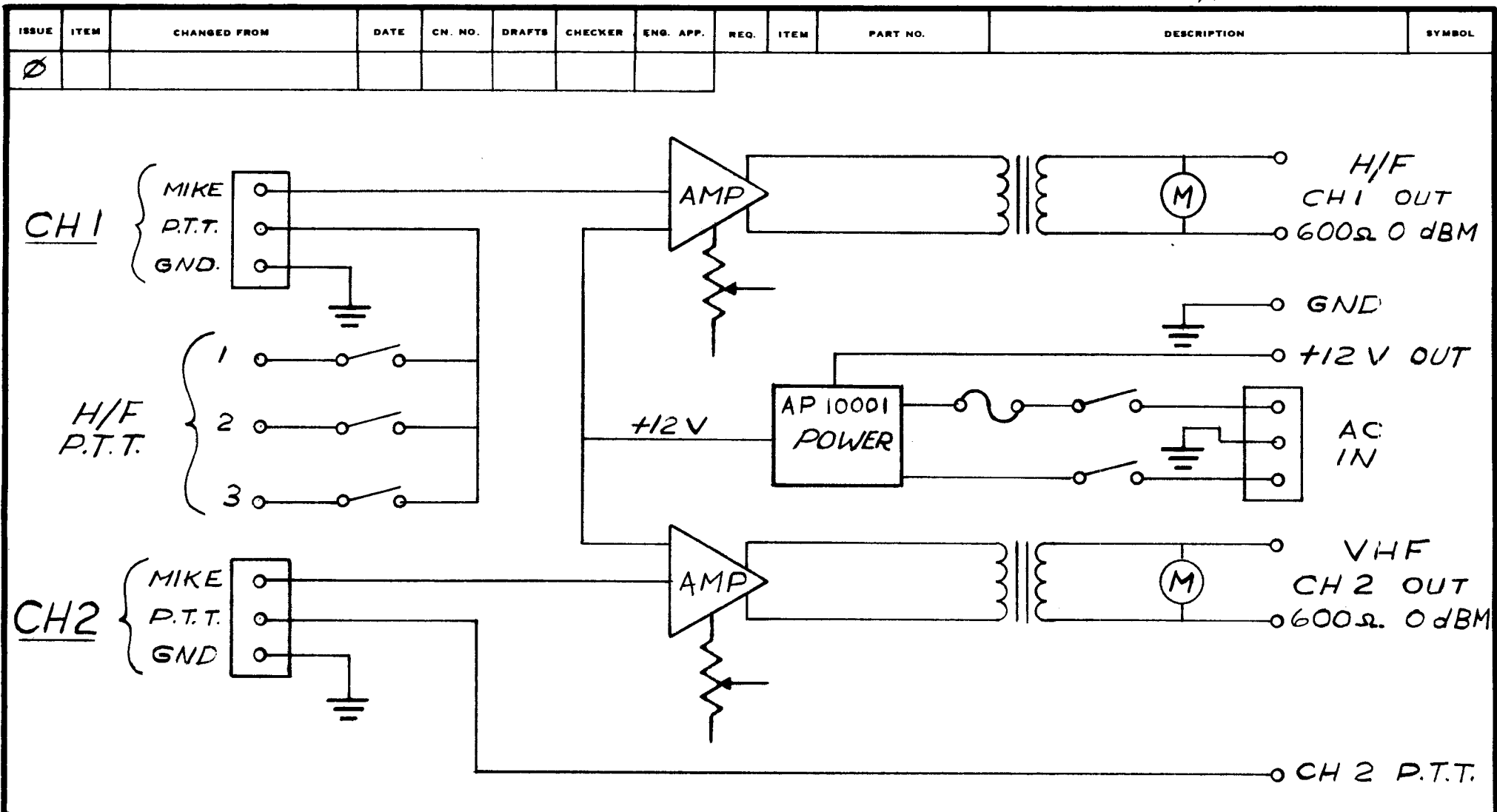
| | | | | | | | | | | | |
|--|--|---|--|--|--|------------|--|--|--|-----------------------------------|--|
| MDTM-1 | | 070/68 | | AUG 23/68 | | STOCK SIZE | | TMC (Canada) LIMITED OTTAWA ONTARIO | | | |
| MODEL | | PROJECT NO. | | ASS'Y. NO. | | DATE | | METERING BOARD | | | |
| USED ON | | | | | | MATERIAL | | WEIGHT PER PC. | | | |
| MAXIMUM ALLOWABLE TOLERANCES HAVE BEEN DETERMINED AND DEVIATIONS WILL BE CAUSE FOR REJECTION. REMOVE ALL BURRS AND SHARP EDGES | | | | IF IT IS FOUND DESIRABLE TO CHANGE ANY TOLERANCE OR OTHER DETAIL SPECIFIED ON THIS DRAWING NOTIFY THE PURCHASER PROMPTLY. | | | | TYPE & TEMPER | | AP | |
| TOLERANCES | | | | SCALE 2:1 | | | | HEAT TREAT. SPEC. | | DRAWN | |
| ALL OTHERS | | DEC. DIM. ± FRAC. DIM. ± ANGULAR DIM. ± | | DIMENSIONS IN INCHES UNLESS OTHERWISE SPECIFIED DRILL, PUNCH, COMMERCIAL STOCK SIZES AND MANUFACTURERS TOLERANCES ARE NOT INCLUDED. | | | | FINISH & SPEC. NO. | | ELEC. DES. APP. / MECH. DES. APP. | |
| | | | | | | | | CHECKED | | FINAL APPROVAL | |
| | | | | | | | | SHEET 3 of 3 | | A 10737-4 A | |

| FORM | ITEM | CHANGED FROM | DATE | CR. NO. | DRAFTS | CHECKED | ENG. APP. | DEC | ITEM | PART NO. | DESCRIPTION | SYMBOL |
|------|------|--------------|------|---------|--------|---------|-----------|-----|------|-----------|---------------------------|--------|
| 15 | | REL TO PROO | | | AP | | | | 1 | A 10741-3 | PRINTED CIRC ASS'Y (LETT) | |
| | | | | | | | | | 2 | TE127-3 | TERM STUD | |



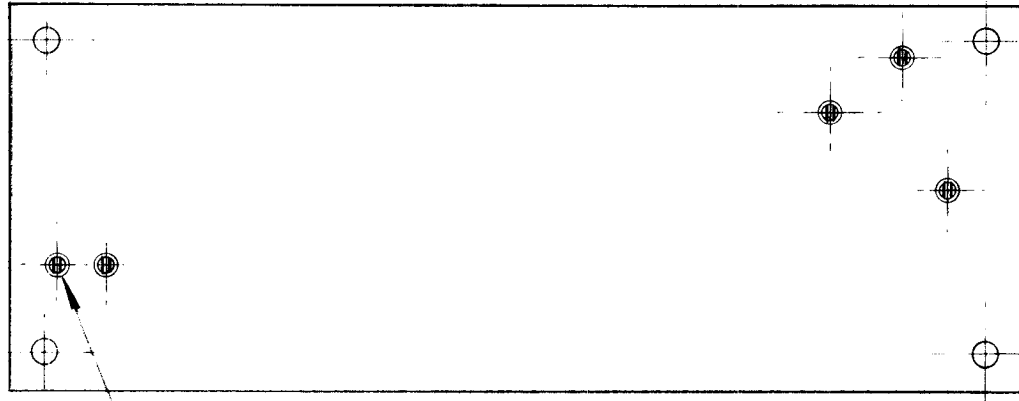
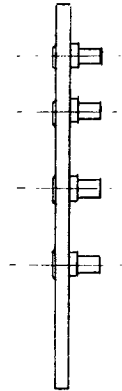
| | | | | | | | |
|--|------------------------|---|-----------|--------------------|----------------|--|------|
| AMC 8 | 078/69 | FX 1001B | JAN 21/69 | | | TMC (Canada) LIMITED OTTAWA ONTARIO | |
| MODEL | PROJECT NO. | ASST. NO. | DATE | STOCK SIZE | | PRINTED CIRCUIT | |
| USED ON | | | | ORIGINAL | WEIGHT PER IN. | (SUB ASS'Y) FILTER | |
| MAXIMUM ALLOWABLE TOLERANCES HAVE BEEN DETERMINED AND DEVIATIONS WILL BE CAUSE FOR REJECTION. REMOVE ALL BURRS AND SHARP EDGES | | IF IT IS FOUND DESIRABLE TO CHANGE ANY TOLERANCE OR OTHER DETAIL SPECIFIED ON THIS DRAWING NOTIFY THE PURCHASER PROMPTLY. | | FINISH & TREAT. | | AP | W |
| TOLERANCES | | SCALE 1/2" | | HEAT TREAT. SPEC. | | SIMPSON | CHEN |
| ALL OTHERS | DEC. DIM. ± .005 | DIMENSIONS IN INCHES UNLESS OTHERWISE SPECIFIED | | FINISH & SPEC. NO. | | SHEET # OF 5 A10741-4 | |
| | FRACTIONAL DIM. ± 1/64 | DIN. PUNCH COMMERCIAL STOCK | | | | | |
| | ANGULAR DIM. ± 0' 30" | DIN. AND MANUFACTURERS TOLERANCES ARE NOT INCLUDED. | | | | | |

A 10749



| | | | | | | | | | | | | | |
|--|--|-------------|--|---|--|----------------|--|---|--|---|--|--|--|
| MODEL | | PROJECT NO. | | ASS'Y. NO. | | DATE | | OCT 30/68 | | STOCK SIZE | | TMC (Canada) LIMITED OTTAWA ONTARIO | |
| USED ON | | | | | | | | MATERIAL | | WEIGHT PER PC. | | DUAL MICROPHONE LINE AMP | |
| MAXIMUM ALLOWABLE TOLERANCES HAVE BEEN DETERMINED AND DEVIATIONS WILL BE CAUSE FOR REJECTION. REMOVE ALL BURRS AND SHARP EDGES | | | | IF IT IS FOUND DESIRABLE TO CHANGE ANY TOLERANCE OR OTHER DETAIL SPECIFIED ON THIS DRAWING NOTIFY THE PURCHASER PROMPTLY. | | | | TYPE & TEMPER | | AP | | DRAWN | |
| TOLERANCES | | | | SCALE | | | | HEAT TREAT. SPEC. | | CHECKED | | ELEC. DES. APP. | |
| ALL OTHERS | | DEC. DIM. ± | | FRAC. DIM. ± | | ANGULAR DIM. ± | | DIMENSIONS IN INCHES UNLESS OTHERWISE SPECIFIED | | DRILL. PUNCH. COMMERCIAL STOCK SIZES AND MANUFACTURERS TOLERANCES ARE NOT INCLUDED. | | MECH. DES. APP. | |
| | | | | | | | | FINISH & SPEC. NO. | | FINAL APPROVAL | | A10749 | |
| | | | | | | | | | | | | φ | |

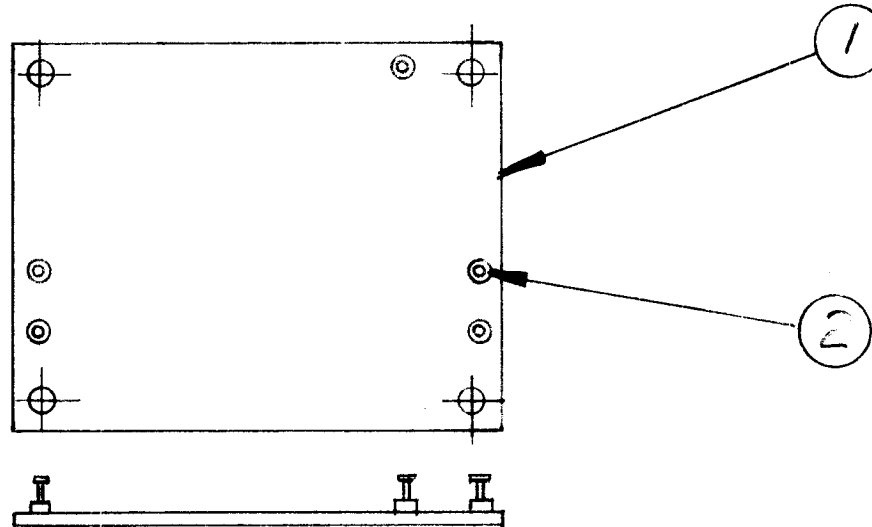
| ISSUE | ITEM | CHANGED FROM | DATE | CN. NO. | DRAFTS | CHECKER | ENG. APP. | REQ. | ITEM | PART NO. | DESCRIPTION | SYMBOL |
|-------|------|------------------|-----------|---------|--------|---------|-----------|------|------|-----------|-------------------------------|--------|
| X | | ENGINEERING REL. | 10 JAN 69 | | PS | | | 1 | 1 | A10752-3 | PC. ASSY (LETTERING) PRE. AMP | |
| | | | | | | | | 5 | 2 | TE10023-3 | TERM. SOLDER (BIFURCATED) | |



3 — INSTALL WITH SLOTS
ORIENTATED AS SHOWN

| | | | | | |
|--|----------------|---|---|---|-----------------|
| AMC-21 | | 10 JAN 69 | | TMC (Canada) LIMITED OTTAWA ONTARIO | |
| MODEL | PROJECT NO. | ASSY. NO. | DATE | | |
| USED ON | | | | MATERIAL | WEIGHT PER PC. |
| MAXIMUM ALLOWABLE TOLERANCES HAVE BEEN DETERMINED AND DEVIATIONS WILL BE CAUSE FOR REJECTION. REMOVE ALL BURRS AND SHARP EDGES | | IF IT IS FOUND DESIRABLE TO CHANGE ANY TOLERANCE OR OTHER DETAIL SPECIFIED ON THIS DRAWING NOTIFY THE PURCHASER PROMPTLY. | | PRINTED CIRCUIT SUB ASSY PRE AMPLIFIER | |
| TOLERANCES | | SCALE 1:1 | | TYPE & TEMPER | DRAWN |
| ALL OTHERS | DEC. DIM. ± | .X = .05 | DIMENSIONS IN INCHES UNLESS OTHERWISE SPECIFIED DRILL, PUNCH, COMMERCIAL STOCK SIZES AND MANUFACTURERS TOLERANCES ARE NOT INCLUDED. | HEAT TREAT. SPEC. | ELEC. DES. APP. |
| | FRAC. DIM. ± | .XX = .01 | | FINISH & SPEC. NO. | MECH. DES. APP. |
| | ANGULAR DIM. ± | .XXX = .005 | | | CHECKED |
| | | | | A10752-4X | |

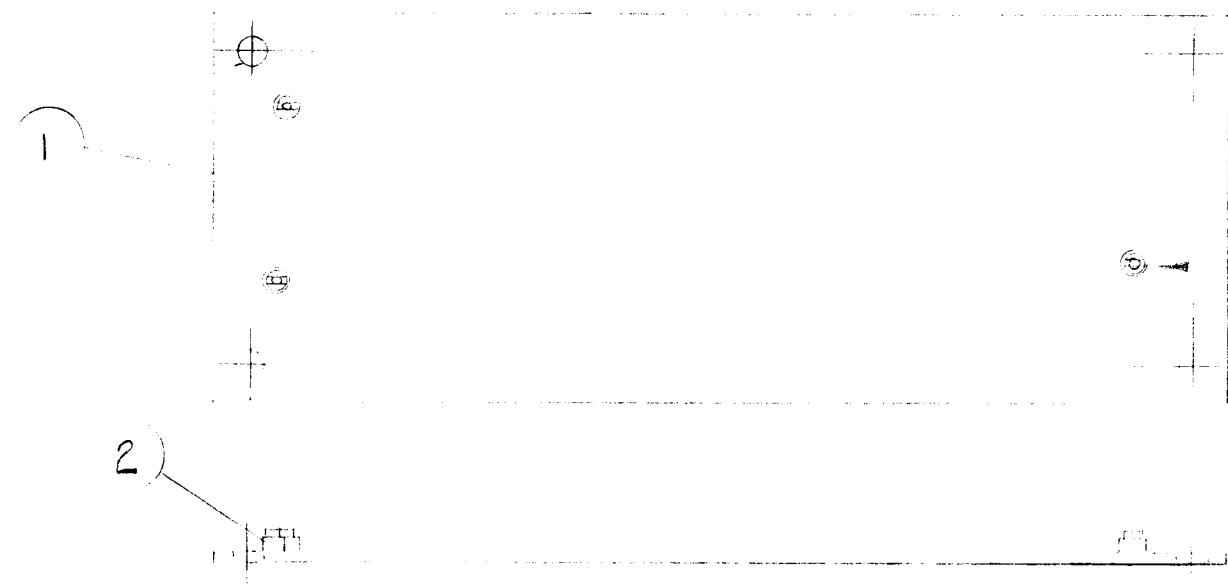
| ISSUE | ITEM | CHANGED FROM | DATE | CN. NO. | DRAFTS | CHECKER | ENG. APP. | REQ. | ITEM | PART NO. | DESCRIPTION | SYMBOL |
|-------|------|------------------|------------|---------|--------|------------|---------------|------|------|----------|---------------------------|--------|
| Ø | | REL. TO PROD | JULY 7/69 | | AP | | | 1 | 1 | A10755-3 | PC ASSY MIC. AMP. (LETT.) | |
| A | | REV. AS PER CEMN | JULY 21/69 | 513 | AP | | AP | 5 | 2 | TE 127-2 | TERMINAL STUD | |
| B | | REV. PER CEMN | 20 JAN 71 | 895 | JDR | <i>JDR</i> | <i>AP</i> | | | | | |



| | | | | | | | | | | | | | |
|--|-------------|------------|------|--|--|-------------------|--|--------------------|--|---|--|-----------------|--|
| SME-5 | | 107170 | | A10755-6 | | 20 JAN 71 | | | | TMC (Canada) LIMITED OTTAWA ONTARIO | | | |
| MCU-16 | | 085169 | | A10755-5 | | JULY 7/69 | | | | | | | |
| MODEL | PROJECT NO. | ASS'Y. NO. | DATE | STOCK SIZE | | | | | | PC. ASS'Y (SUB) MICROPHONE | | | |
| USED ON | | | | MATERIAL | | WEIGHT PER PC. | | | | AMPLIFIER | | | |
| MAXIMUM ALLOWABLE TOLERANCES HAVE BEEN DETERMINED AND DEVIATIONS WILL BE CAUSE FOR REJECTION. REMOVE ALL BURRS AND SHARP EDGES | | | | IF IT IS FOUND DESIRABLE TO CHANGE ANY TOLERANCE OR OTHER DETAIL SPECIFIED ON THIS DRAWING NOTIFY THE PURCHASER PROMPTLY. | | | | TYPE & TEMPER | | AP | | | |
| | | | | | | | | | | DRAWN | | ELEC. DES. APP. | |
| TOLERANCES | | | | SCALE 1:1 | | HEAT TREAT. SPEC. | | CHECKED | | FINAL APPROVAL | | | |
| ALL OTHERS DEC. DIM. ± .X = .05 FRAC. DIM. ± 1/64 .XX = .01 ANGULAR DIM. ± 0° 30' .XXX = .005 | | | | DIMENSIONS IN INCHES UNLESS OTHERWISE SPECIFIED DRILL: PUNCH, COMMERCIAL STOCK SIZES AND MANUFACTURERS TOLERANCES ARE NOT INCLUDED. | | | | FINISH & SPEC. NO. | | Sheet 4 of 6 | | A10755-4 B | |

A-10756-4

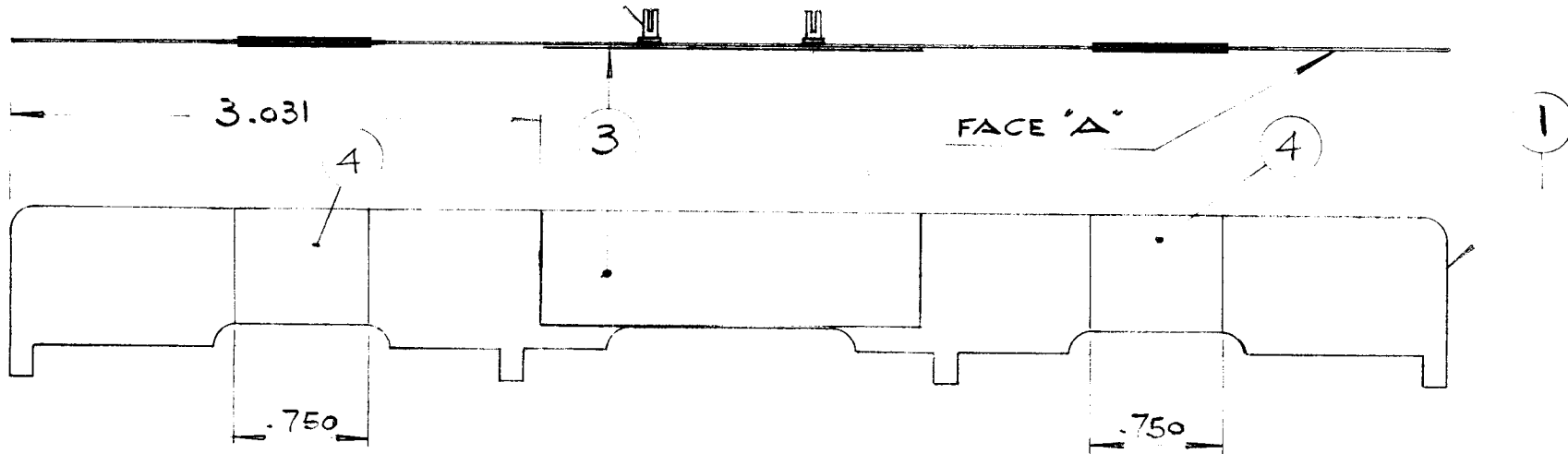
| ISSUE | ITEM | CHANGED FROM | DATE | CH. NO. | DRAFTS | CHECKER | ENG. APP. | REQ. | ITEM | PART NO. | DESCRIPTION | SYMBOL |
|-------|------|--------------|------------|---------|--------|---------|-----------|------|------|----------|------------------------------|--------|
| Ø | | REL TO PROD | JULY 22/69 | | AP | | | | 1 | A10756-3 | P.C. ASSY OUTPUT | |
| | | | | | | | | | 3 2 | 100013-3 | TEMP. SOLDER (SPECIFICATION) | |



| | | | | | | | |
|--|-------------|-----------|------|--|----------------|---|-----|
| MAC-1 | | 074/60 | | 7-16-69 | | TMC (Canada) LIMITED OTTAWA ONTARIO | |
| MODEL | PROJECT NO. | ASSY. NO. | DATE | STOCK SIZE | | | |
| USED ON | | | | MATERIAL | WEIGHT PER PC. | P.C. ASSY OUTPUT | |
| MAXIMUM ALLOWABLE TOLERANCES HAVE BEEN DETERMINED AND DEVIATIONS WILL BE CAUSE FOR REJECTION. REMOVE ALL BURRS AND SHARP EDGES | | | | IF IT IS FOUND DESIRABLE TO CHANGE ANY TOLERANCE OR OTHER DETAIL SPECIFIED ON THIS DRAWING NOTIFY THE PURCHASER PROMPTLY. | | (SUB) | |
| | | | | | | SCALE | UTS |
| TOLERANCES | | | | SCALE | | CHECKED | |
| DEC. DIM. ± .X = .05 FRAC. DIM. ± 1/64 .XX = .01 ANGULAR DIM. ± 0° 30' .XXX = .005 | | | | DIMENSIONS IN INCHES UNLESS OTHERWISE SPECIFIED DRILL: PUNCH, COMMERCIAL STOCK SIZES AND MANUFACTURERS TOLERANCES ARE NOT INCLUDED. | | FINAL APPROVAL | |
| ALL OTHERS | | | | FINISH & SPEC. NO. | | SKT 4 of 5 A-10756-4 Ø | |

| ISSUE | ITEM | CHANGED FROM | DATE | CN. NO. | DRAFTS | CHECKER | ENG. APP. | REQ. | ITEM | PART NO. | DESCRIPTION | SYMBOL |
|-------|------|----------------|-----------|---------|--------|---------|-----------|------|------|------------|---------------------|--------|
| Ø | | REL TO M.L.L. | | | | | | 1 | 1 | MS 10961 | STRAP | |
| A | | REV Δ FEB 1961 | JUNE 1969 | 500 | Alla | | | 2 | 2 | TE 10023-3 | TERMINAL, SOLDER | |
| | | | | | | | | 2" | 3 | TA-108-4 | TAPE, THERMOSETTING | |
| | | | | | | | | 1.5" | 4 | PX 830-375 | HT. SHRINK SLEEVE | |

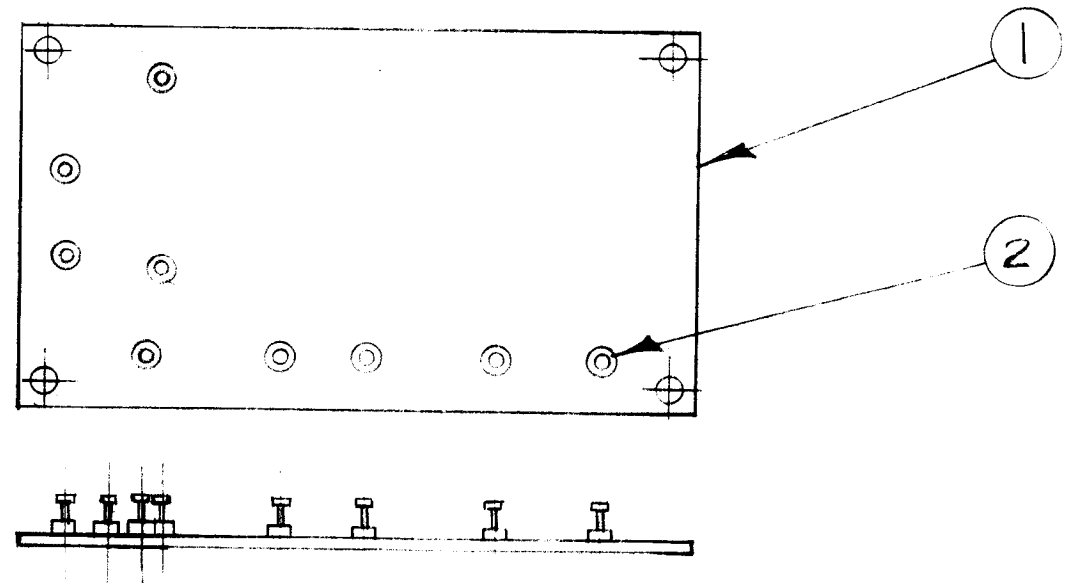
STAKE IN POSITION ②
WITH SLOT AS SHOWN
SOLDER ON FACE "A"



| | | | | | | | | | | | |
|--|-----------------------|-------------|---|---|--|-------------------|--------------------|--|---------|------------------------------------|--|
| AMC 32 | | 074-69 | | MAY 13-69 | | | | TMC (Canada) LIMITED OTTAWA ONTARIO CONNECTOR ASSY | | | |
| MODEL | PROJECT NO. | ASS'Y. NO. | DATE | STOCK SIZE | | | | | | | |
| USED ON | | | | MATERIAL | | WEIGHT PER PC. | | DRAWN <i>ANA</i> | | | |
| MAXIMUM ALLOWABLE TOLERANCES HAVE BEEN DETERMINED AND DEVIATIONS WILL BE CAUSE FOR REJECTION. REMOVE ALL BURRS AND SHARP EDGES | | | | IF IT IS FOUND DESIRABLE TO CHANGE ANY TOLERANCE OR OTHER DETAIL SPECIFIED ON THIS DRAWING NOTIFY THE PURCHASER PROMPTLY. | | | | TYPE & TEMPER | | ELEC. DES. APP. <i>[Signature]</i> | |
| TOLERANCES | | | | SCALE 1:1 | | HEAT TREAT. SPEC. | | CHECKED | | FINAL APPROVAL | |
| ALL OTHERS | DEC. DIM. ± .015 | .X = .05 | DIMENSIONS IN INCHES UNLESS OTHERWISE SPECIFIED | | | | FINISH & SPEC. NO. | | A 10770 | | |
| | FRAC. DIM. ± 1/64 | .XX = .01 | DRILL: PUNCH. COMMERCIAL STOCK SIZES AND MANUFACTURERS TOLERANCES ARE NOT INCLUDED. | | | | | | A | | |
| | ANGULAR DIM. ± 0° 30' | .XXX = .005 | | | | | | | | | |

A 10778-4

| ISSUE | ITEM | CHANGED FROM | DATE | CN. NO. | DRAFTS | CHECKER | ENG. APP. | REQ. | ITEM | PART NO. | DESCRIPTION | SYMBOL |
|-------|------|------------------|------------|---------|--------|---------|-----------|------|------|----------|------------------------|--------|
| Ø | | REL. TO PROD. | JULY 14/69 | | RH | | | 1 | 1 | A10778-3 | PC. ASSY REG LETTERING | |
| A | | REV. AD PER CEMU | DEC 8/69 | 662 | DGW | | | 2 | 2 | TE 127-2 | TERMINAL STDS | |
| B | | REV. PER CEMU | 14 JUN 72 | 1185 | NAT. | LB | | | | | | |



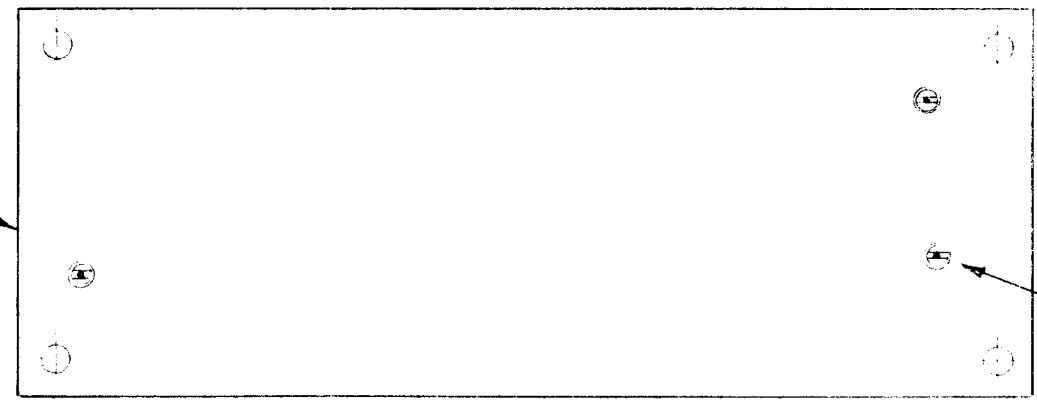
| | | | |
|--|---|--|------|
| SME 5 | | A 10778-6 | |
| MCU 16 | | A 10778-5 | |
| MODEL | PROJECT NO. | ASSY. NO. | DATE |
| USED ON | | | |
| MAXIMUM ALLOWABLE TOLERANCES HAVE BEEN DETERMINED AND DEVIATIONS WILL BE CAUSE FOR REJECTION. REMOVE ALL BURRS AND SHARP EDGES | | IF IT IS FOUND DESIRABLE TO CHANGE ANY TOLERANCE OR OTHER DETAIL SPECIFIED ON THIS DRAWING NOTIFY THE PURCHASER PROMPTLY. | |
| TOLERANCES | | SCALE $\frac{1}{1}$ | |
| ALL OTHERS | DEC. DIM. \pm .X = .08 FRAC. DIM. $\pm \frac{1}{64}$.XX = .01 ANGULAR DIM. $\pm 0^{\circ} 30'$.XXX = .008 | DIMENSIONS IN INCHES UNLESS OTHERWISE SPECIFIED DRILL: PUNCH, COMMERCIAL STOCK SIZES AND MANUFACTURERS TOLERANCES ARE NOT INCLUDED. | |

| | | | |
|--------------------|----------------|--|-----------------|
| STOCK SIZE | | TMC (Canada) LIMITED OTTAWA ONTARIO | |
| MATERIAL | WEIGHT PER PC. | PRINTED CIRCUIT ASSY | |
| TYPE & TEMPER | | REGULATOR | |
| HEAT TREAT. SPEC. | | R. HAMILTON | |
| FINISH & SPEC. NO. | | DRAWN | MECH. DES. APP. |
| | | ELEC. DES. APP. | FINAL APPROVAL |
| | | CHECKED | |
| | | SHT 4 OF 6 | A10778-4 B |

A 10779-4

| ISSUE | ITEM | CHANGED FROM | DATE | CH. NO. | DRAFTS | CHECKER | ENG. APP. | REQ. | ITEM | PART NO. | DESCRIPTION | SYMBOL |
|-------|------|--------------|------------|---------|--------|---------|-----------|------|------|-----------|-----------------------------|--------|
| Ø | | REL TO PROD | JULY 22/69 | | AP | | | 1 | 1 | A10779-3 | PC ASSEMBLY (LEFT, PRE-AMP) | |
| | | | | | | | | 3 | 2 | TS 0023-3 | TERMI. SOLDER (BIFURCATED) | |

①



INSTALL 1/2" AS SHOWN, USE BIFURCATED SOLDER

②



| | | | | | | | |
|--|-----------------------------------|---|------|--------------------|----------------|--|--|
| MACH | | 074/69 | | 10-69 | | TMC (Canada) LIMITED OTTAWA ONTARIO | |
| MODEL | PROJECT NO. | ASS'Y. NO. | DATE | STOCK SIZE | | | |
| USED ON | | | | MATERIAL | WEIGHT PER PC. | PC ASSEMBLY PRE-AMP | |
| MAXIMUM ALLOWABLE TOLERANCES HAVE BEEN DETERMINED AND DEVIATIONS WILL BE CAUSE FOR REJECTION. REMOVE ALL BURRS AND SHARP EDGES | | IF IT IS FOUND DESIRABLE TO CHANGE ANY TOLERANCE OR OTHER DETAIL SPECIFIED ON THIS DRAWING NOTIFY THE PURCHASER PROMPTLY. | | TYPE & TEMPER | | DRAWN | |
| | | | | HEAT TREAT. SPEC. | | ELEC. DES. APP. | |
| TOLERANCES | | SCALE NTS | | FINISH & SPEC. NO. | | CHECKED FINAL APPROVAL Sht 4 of 5 A10779-4 Ø | |
| ALL OTHERS | DEC. DIM. ± .X = .05 | DIMENSIONS IN INCHES UNLESS OTHERWISE SPECIFIED | | | | | |
| | FRAC. DIM. ± 1/64 .XX = .01 | DRILL, PUNCH, COMMERCIAL STOCK SIZES AND MANUFACTURERS TOLERANCES ARE NOT INCLUDED. | | | | | |
| | ANGULAR DIM. ± 0° 30' .XXX = .005 | | | | | | |

| | | | |
|--|------------------------------------|-----------------|--------------|
| ENGINEERING MODIFICATION NOTICE (CANADA) | | CEMN NO. 1259 | |
| DATE 23 Oct 73 | TMC (Canada) LTD OTTAWA ONTARIO | | SHEET 1 OF 1 |
| MODEL AFFECTED: LMC-32 | | LCR NO. | |
| SECTION AFFECTED: A10812-PC BOARD & M/L | | 50 | |
| ORIGINATOR: A. PETROFF | | FINAL APPROVAL: | |

| DISTRIBUTION | | | | | DOCUMENTS AFFECTED | | | | | | | |
|----------------|------|------|------|---------------|--------------------|------|------|---------------|-----|------|--------|-------|
| DEPT. | CEMN | DOC. | SIGN | DEPT. | CEMN | DOC. | SIGN | TYPE: | DWG | LIST | NPL ML | SPEC. |
| ENG. CO-ORD | | | | STOCK & INV. | | | | DOCUMENT NO. | | | REV. | CHD. |
| ENG. STDS. | | | | QUAL. ASSUR. | | | | A10812-1 TO-5 | | | A | DMY |
| ENG. ADMIN. | | | | MASTER FILE 0 | | | | A10812-5 M/L | | | | DMY |
| PURCHASING | | | | MASTER FILE 1 | | | | | | | | |
| METHODS | | | | MASTER FILE 2 | | | | | | | | |
| PROD. PLANNING | | | | MASTER FILE 3 | | | | | | | | |
| DATA CONTROL | | | | | | | | | | | | |
| MATL. CONTROL | | | | | | | | | | | | |

CHANGES :-

A10812-5 - 'C14' WAS MISSING, 'C15' WAS CHANGED TO READ "C5"

A10812-1 & -2 - HEATSINK'S MTG. HOLES WERE ADJUSTED TO THE CORRECT HOLE SPACING.

A10812-3 - DESIGNATIONS CHANGED TO AGREE WITH A10812-5 CHANGES

A10812-4 - ISSUE RAISED.

A10812-5 M/L RELEASED AT ISSUE \emptyset

| | | | |
|---|--|-------------------|--|
| <input type="checkbox"/> TO AGREE WITH CEMN NO. | | REASON FOR CHANGE | |
| <input checked="" type="checkbox"/> ERROR | | PERTAINING TO: | |
| OTHER: | | | |

| | | | | | | |
|--|-----------------------------|--------------------------|--------------------------|--------------------------|--------------------------|--------------------------|
| DISPOSITION OF STOCK | DEplete | DISCARD | MODIFY | CONFORMS. | NO STOCK | NOT AFFECTED |
| | <input type="checkbox"/> | <input type="checkbox"/> | <input type="checkbox"/> | <input type="checkbox"/> | <input type="checkbox"/> | <input type="checkbox"/> |
| PRICE CHANGE | NONE | INCREASED BY | | DECREASED BY | | |
| MODIFICATION EFFECTIVE | IMMEDIATELY (ALL NEW PARTS) | | SPECIFIC DATE | | | |
| | <input type="checkbox"/> | | SERIAL NO. | | | |
| | NEXT PROD. RUN | | MFG. NO. | | | |
| AFFECTED SUPPORTING DOCUMENTS (ENG. INFO.) | STATUS | LIST | ASSY | SCHM | SPEC. | REMARKS |
| | CHGD. | | | | | |
| | CEMN NO. | | | | | |
| | N/A | | | | | |
| CONF. | | | | | | REMARKS |