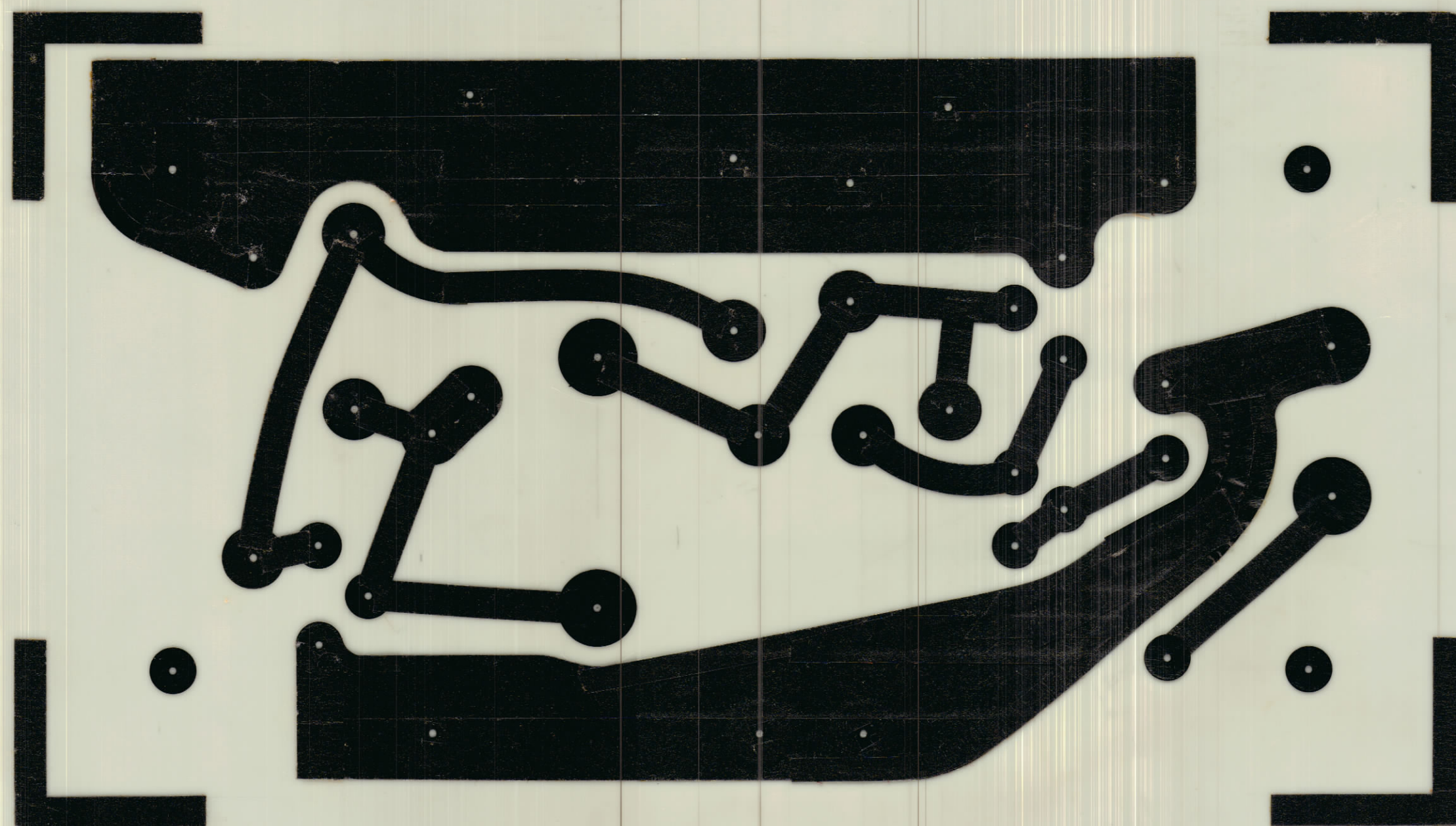


REVISIONS						
ZONE	SYM	DESCRIPTION	DATE	E.M.N. NO.	DRAFT	CHKD. BY
Ø		REL. TO PROD.	AUG 7/68		RPL	W

←————— 2 $\frac{3}{4}$ —————→



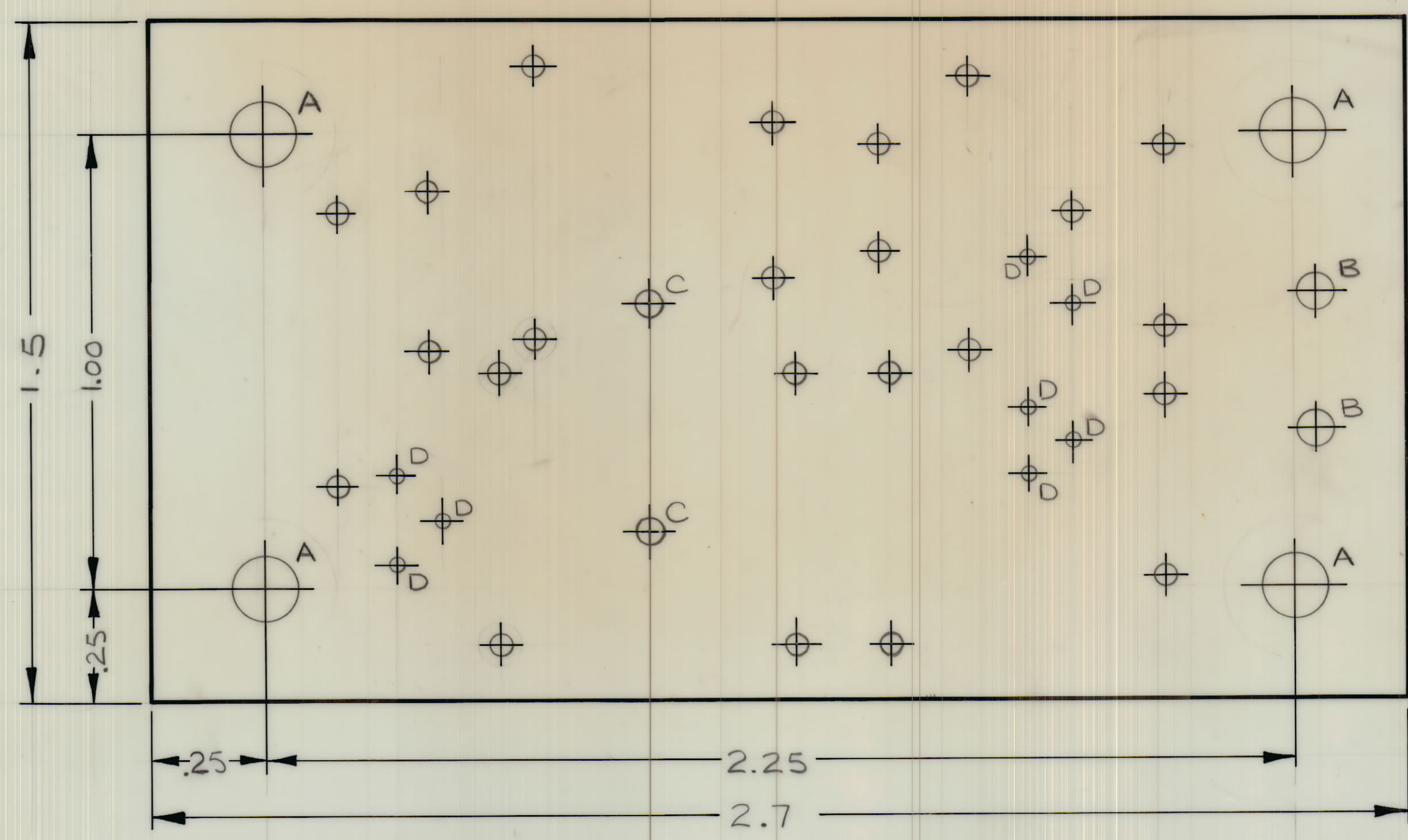
SCALE 4:1
 NEGATIVE 1:1
 BOTTOM PATTERN

AMC20		JULY 19/68		TMC (Canada) LIMITED OTTAWA ONTARIO	
MODEL	PROJECT NO.	ASS'Y. NO.	DATE	P.C.B., OSCILLATOR ASS'Y	
USED ON				MATERIAL	WEIGHT PER PC.
MAXIMUM ALLOWABLE TOLERANCES HAVE BEEN DETERMINED AND DEVIATIONS WILL BE CAUSE FOR REJECTION. REMOVE ALL BURRS AND SHARP EDGES				IF IT IS FOUND DESIRABLE TO CHANGE ANY TOLERANCE OR OTHER DETAIL SPECIFIED ON THIS DRAWING NOTIFY THE PURCHASER PROMPTLY.	
TOLERANCES		SCALE		TYPE & TEMPER	
ALL	DEC. DIM. ±	DIMENSIONS IN INCHES UNLESS OTHERWISE SPECIFIED		HEAT TREAT. SPEC.	
OTHERS	FRAC. DIM. ±	DRILL, PUNCH, COMMERCIAL STOCK SIZES AND MANUFACTURERS TOLERANCES ARE NOT INCLUDED.		FINISH & SPEC. NO.	
				DRAWN	MECH. DES. APP.
				CHECKED	FINAL APPROVAL
				SHEET 1 OF 4 A10695-1 Ø	

REVISIONS						
ZONE	SYM	DESCRIPTION	DATE	E.M.N. NO.	DRAFT	CHKD .APPD
Ø		REL. TO PROD.	AUG 7/68		RPC	W

NOTES

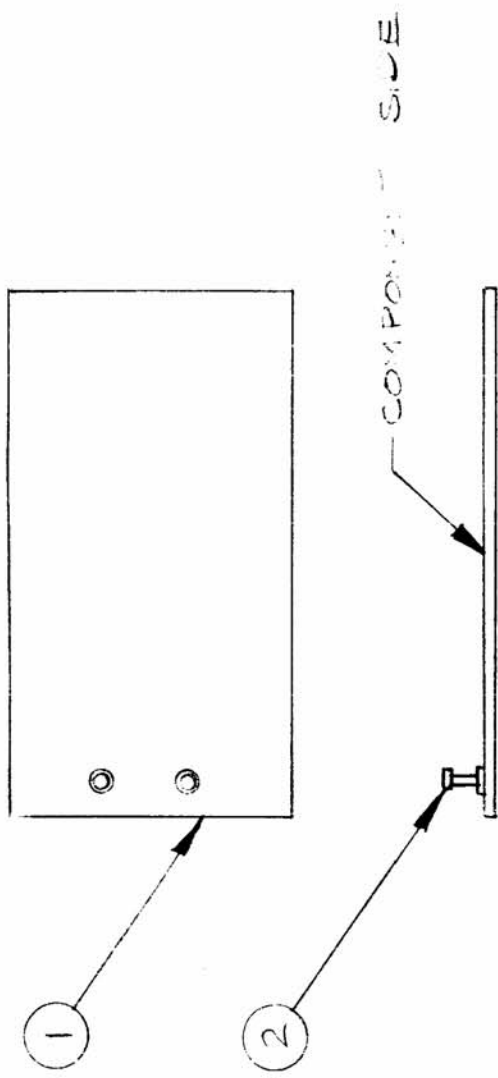
- (1) MATERIAL : PLASTIC SHEET, LAMINATED COPPER CLAD FL-GE 062 C2/0
- (2) CONDUCTIVE PATTERN TO BE
 - (A) PLATED WITH A MINIMUM OF .0003 TIN LEAD
 - (B) COATED WITH A MINIMUM OF .0003 SOLDER
- (3) TO BE IN ACCORDANCE WITH TMC SPEC. S735



HOLE	DESCRIPTION	REQ'D
A	.140 DIA.	4
B	.081 DIA.	2
C	.062 DIA.	2
D	.031 DIA.	8
UNMARKED	.046 DIA.	23

MODEL	PROJECT NO.	ASS'Y. NO.	DATE	SEE NOTES	TMC (Canada) LIMITED OTTAWA ONTARIO	
AMC20			JULY 19/68		PCB, OSCILLATOR ASS'Y	
MAXIMUM ALLOWABLE TOLERANCES HAVE BEEN DETERMINED AND DEVIATIONS WILL BE CAUSE FOR REJECTION. REMOVE ALL BURRS AND SHARP EDGES				IF IT IS FOUND DESIRABLE TO CHANGE ANY TOLERANCE OR OTHER DETAIL SPECIFIED ON THIS DRAWING NOTIFY THE PURCHASER PROMPTLY.		
TOLERANCES				SCALE		
ALL	DEC. DIM. ±	DIMENSIONS IN INCHES UNLESS OTHERWISE SPECIFIED.		DRAWN		
OTHERS	FRAC. DIM. ±	DRILL, PUNCH, COMMERCIAL STOCK SIZES AND MANUFACTURERS TOLERANCES ARE NOT INCLUDED.		ELEC. DES. APP.		
	ANGULAR DIM. ±			MECH. DES. APP.		
				HEAT TREAT. SPEC.		
				FINISH & SPEC. NO.		
				CHECKED		FINAL APPROVAL
						SHEET 2 OF 4 A10695-2 Ø

ISSUE	ITEM	CHANGED FROM	DATE	CH. NO.	DRAFTS	CHECKER	ENG. APP.	REQ.	ITEM	PART NO.	DESCRIPTION	SYMBOL
Ø		REL. TO PROD.	AUG 7/68		RPL		<i>[Signature]</i>	1	1	A10695-2	P.C.B. OSCILLATOR ASS'Y	
								2	2	TE 127-2	STUD, TERMINAL	B



AMC 20		PROJECT NO.	ASS'Y. NO.	DATE	TMC (Canada) LIMITED OTTAWA ONTARIO	
MODEL		USED ON			P.C.B. OSCILLATOR ASS'Y	
MAXIMUM ALLOWABLE TOLERANCES HAVE BEEN DETERMINED AND DEVIATIONS WILL BE CAUSE FOR REJECTION. REMOVE ALL BURRS AND SHARP EDGES		IF IT IS FOUND DESIRABLE TO CHANGE ANY TOLERANCE OR OTHER DETAIL SPECIFIED ON THIS DRAWING NOTIFY THE PURCHASER PROMPTLY.			RPL	
TOLERANCES		SCALE 1:1			DRAWN	
DEC. DIM. ±	DIMENSIONS IN INCHES UNLESS OTHERWISE SPECIFIED	HEAT TREAT. SPEC.			CHECKED	
FRAC. DIM. ±	DRILL, PUNCH, COMMERCIAL STOCK SIZES AND MANUFACTURERS TOLERANCES ARE NOT INCLUDED.	TYPE & TEMPER			ELEC. DES. APP. <i>[Signature]</i>	
ANGULAR DIM. ±		MATERIAL			MECH. DES. APP. <i>[Signature]</i>	
ALL OTHERS		WEIGHT PER PC.			FINAL APPROVAL	
		FINISH & SPEC. NO.			SHEET 3 OF 4 A10695-4 Ø	