

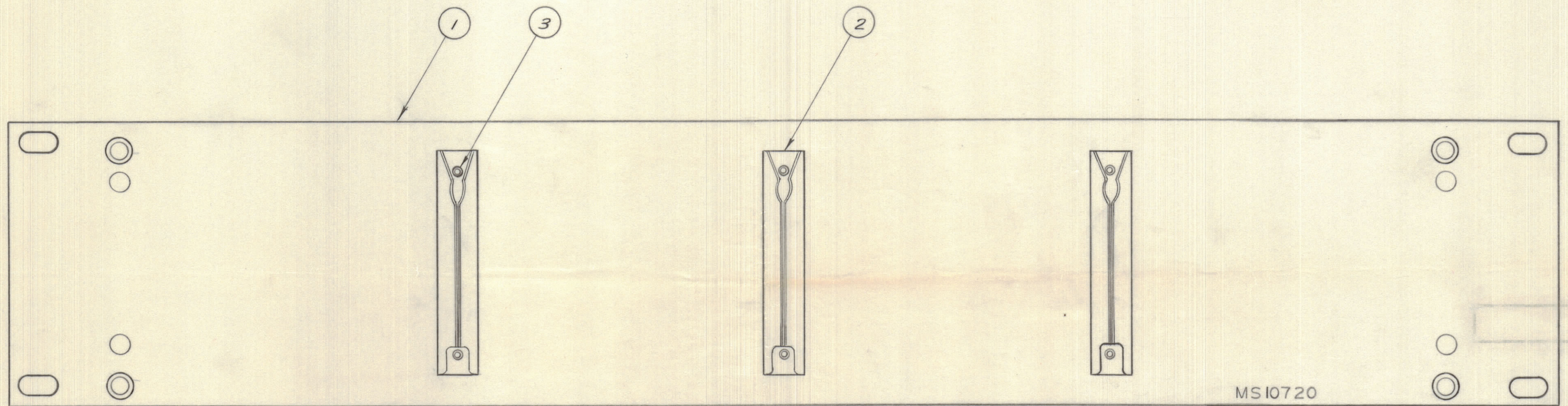
IF IT IS FOUND DESIRABLE TO CHANGE ANY TOLERANCE OR OTHER DETAIL SPECIFIED ON THIS DRAWING NOTIFY THE PURCHASER PROMPTLY.

MAXIMUM ALLOWABLE TOLERANCES HAVE BEEN DETERMINED AND DEVIATIONS WILL BE CAUSE FOR REJECTION. REMOVE ALL BURRS AND SHARP EDGES.

DIMENSIONS IN INCHES UNLESS OTHERWISE SPECIFIED

ISSUE	ITEM	CHANGED FROM	DATE	CN. NO.	DRAFTS	CHECKER	ENG. APP.
0		RELEASED FOR PROD.	SEPT 13/66		RPL		(Signature)

REQ.	ITEM	PART NO.	DESCRIPTION	SYMBOL
1	1	MS10720	PANEL FRONT	
3	2	CU10012-1	RETAINER PC BOARD	
6	3	EY10004	RIVET	



**FINISH:**

S114 - ZINC CHROMATE PRIMER } FRONT AND  
 S115 - SMOOTH GRAY ENAMEL } EDGES ONLY

A 10521

TOLERANCES		SCALE: 1:1
ALL OTHERS	DEC. DIM. ± FRAC. DIM. ± ANGULAR DIM. ±	DRILL, PUNCH, COMMERCIAL STOCK SIZES AND MANUFACTURERS TOLERANCES ARE NOT INCLUDED.

AX10031	050/66	A 10517	12 SEPT 66
MODEL	PROJECT NO.	ASS'Y. NO.	DATE

STOCK SIZE		<b>TMC (Canada) LIMITED</b> OTTAWA ONTARIO	
MATERIAL		ASSEMBLY	
WEIGHT PER PC.		PANEL FRONT	
TYPE & TEMPER	RD	ELEC. DES. APP.	MECH. DES. APP.
HEAT TREAT. SPEC.	COOK	CHECKED	FINAL APPROVAL
FINISH & SPEC. NO.		A 10521	