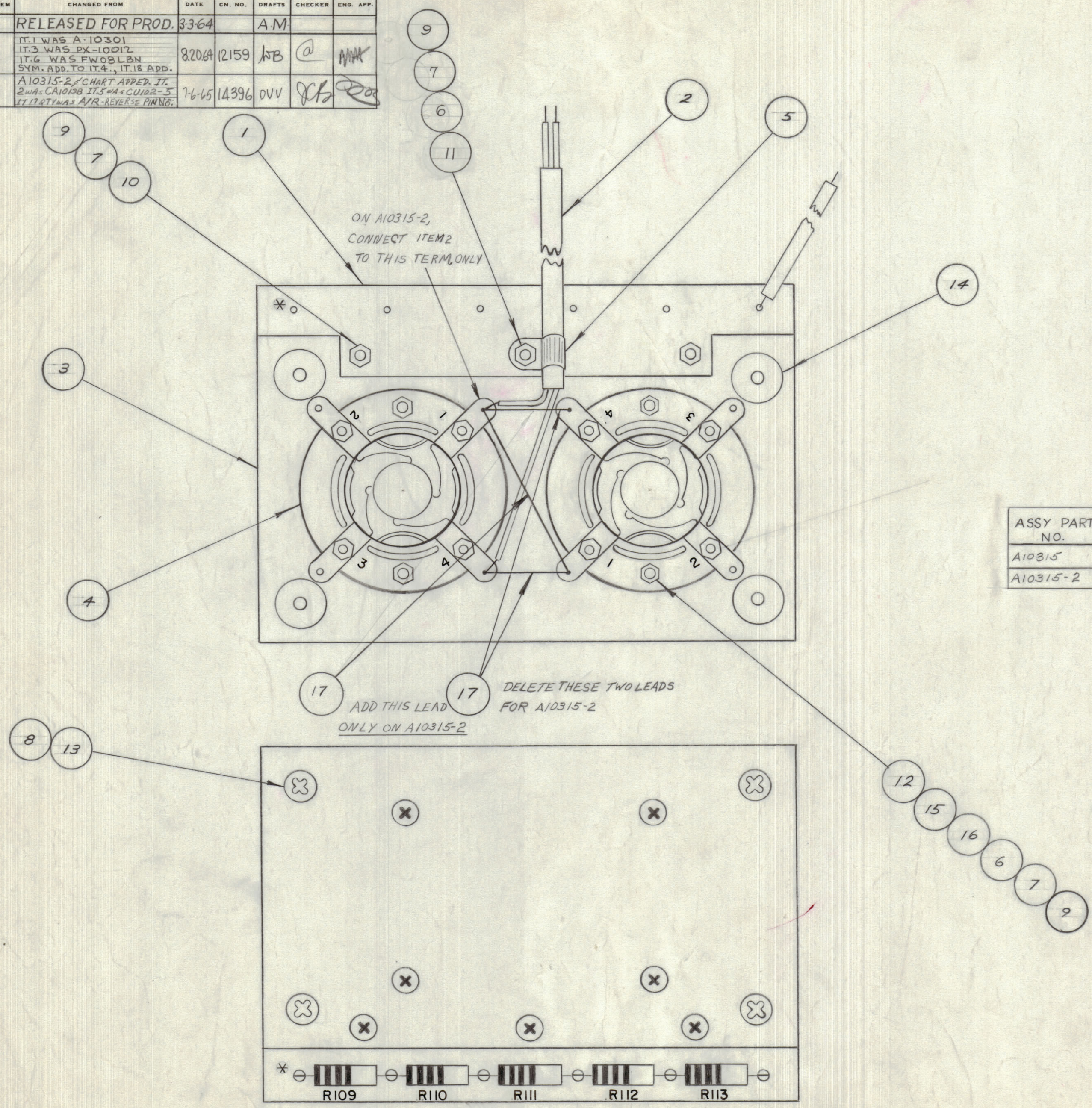


IF IT IS FOUND DESIRABLE TO CHANGE ANY TOLERANCE OR OTHER DETAIL SPECIFIED ON THIS DRAWING NOTIFY THE PURCHASER PROMPTLY.		DIMENSIONS IN INCHES UNLESS OTHERWISE SPECIFIED					
MAXIMUM ALLOWABLE TOLERANCES HAVE BEEN DETERMINED AND DEVIATIONS WILL BE CAUSE FOR REJECTION. REMOVE ALL BURRS AND SHARP EDGES.							
ISSUE	ITEM	CHANGED FROM	DATE	CN. NO.	DRAFTS	CHECKER	ENG. APP.
0		RELEASED FOR PROD.	3-3-64		A.M.		
A		IT.1 WAS A-10301 IT.3 WAS PX-10012 IT.6 WAS FWO8LBN SYM. ADD. TO IT.4., IT.18 ADD.	8-20-64	12159	AWB	@	MMK
B		A10315-2, CHART APP'D. IT. 2 WAS CA10138 IT.5 WAS CU102-5 IT.17 & 18 WAS AIR-REVERSE PINNED.	7-6-65	14396	DVV	JL	Doc

REQ.	ITEM	PART NO.	DESCRIPTION	SYMBOL
1	1	A1533-4	BOARD, TERMINAL	
1	2	SEE CHART	CABLE	
1	3	PX 406	BASE, RECTIFIER	
2	4	TS-123-210-1	TUBE SOCKET, BAYONET	XV103 XV104
1	5	SEE CHART	CLAMP	
5	6	FWO8HBN	WASHER, FLAT	
7	7	LWE08MRN	LOCKWASHER, EXTERNAL	
4	8	LWE10MRN	LOCKWASHER, EXTERNAL	
7	9	NTH0832BN11	NUT, HEXAGON	
2	10	SCBP0832BN10	SCREW, MACHINE	
1	11	SCBP0832BN12	SCREW, MACHINE	
4	12	SCBP0832BN20	SCREW, MACHINE	
4	13	SCBP1032BN8	SCREW, MACHINE	
4	14	TE1032PRIOR	SPACER, SPECIAL	
4	15	WA-101-4	WASHER, FIBRE	
4	16	WA-109-46	WASHER, FIBRE	
6	17	WL-100-4	WIRE, BUSS	
AIR	18	BS100	SOLDER, TIN ALLOY	



ASSY PART NO.	ITEM 2	ITEM 5	USED ON
A10315	CA10138	CU102-5	PSP-350, PSP-350A
A10315-2	CA377-10	CU102-3	PSP-350B

A-10315 B

NOTE:
* - LEAVE UNSOLDERED

TOLERANCES		SCALE:
ALL OTHERS	DEC. DIM. ± FRAC. DIM. ± ANGULAR DIM. ±	DRILL, PUNCH, COMMERCIAL STOCK SIZES AND MANUFACTURERS TOLERANCES ARE NOT INCLUDED.

PSP-350B			
PSP-350A			
PSP-350			23-12-63
MODEL	PROJECT NO.	ASS'Y. NO.	DATE
USED ON			

STOCK SIZE		TMC (Canada) LIMITED OTTAWA ONTARIO	
MATERIAL		RECTIFIER BASE	
TYPE & TEMPER		RD	
HEAT TREAT. SPEC.		DRAWN	ELEC. DES. APP. MECH. DES. APP.
FINISH & SPEC. NO.		CHECKED	FINAL APPROVAL
		A-10315 B	