

IF IT IS FOUND DESIRABLE TO CHANGE ANY TOLERANCE OR OTHER DETAIL SPECIFIED ON THIS DRAWING NOTIFY THE PURCHASER PROMPTLY.

A-10307A

MAXIMUM ALLOWABLE TOLERANCES HAVE BEEN DETERMINED AND DEVIATIONS WILL BE CAUSE FOR REJECTION. REMOVE ALL BURRS AND SHARP EDGES

USED ON

MODEL

PROJECT NO.

ASS'Y. NO.

DATE

RFA-1

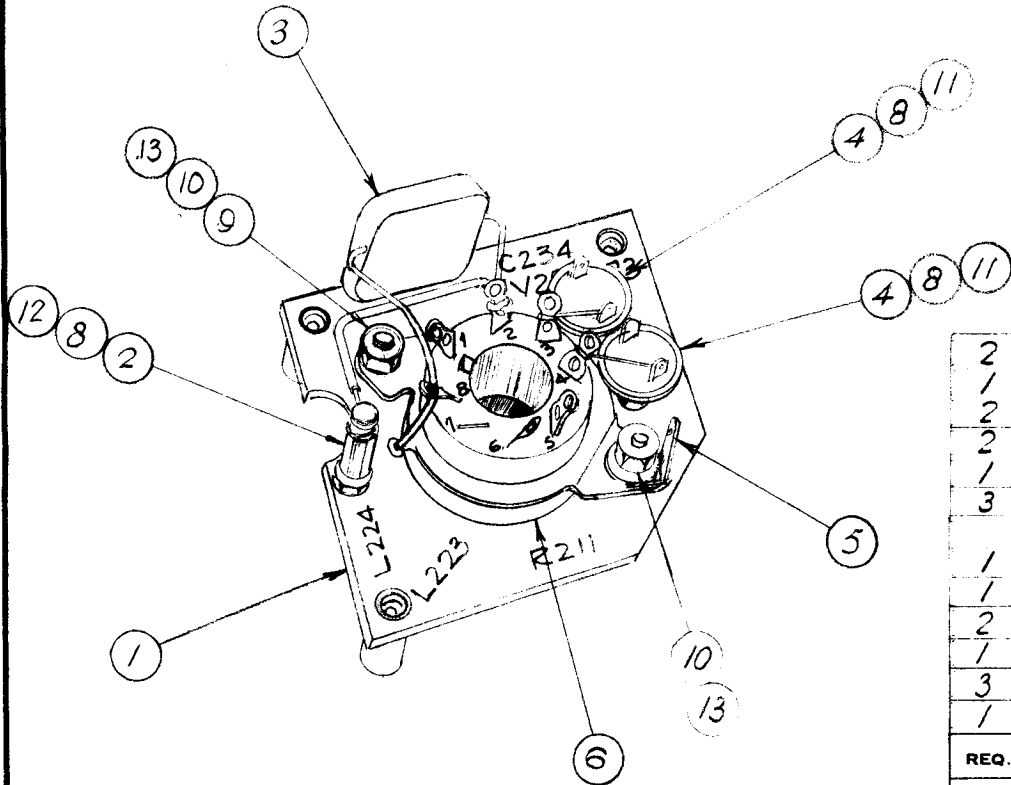
23 FEB 61

**NOTICE TO PERSONS RECEIVING THIS DRAWING**

THE TECHNICAL MATERIEL CORPORATION claims proprietary right in the material disclosed herein. This drawing is loaned in confidence for engineering information only and may not be reproduced or used to manufacture anything shown hereon without permission from THE TECHNICAL MATERIEL CORPORATION to the user. This drawing is loaned for your assistance and is subject to recall at any time.

Property of:

THE TECHNICAL MATERIEL CORPORATION  
MAMARONECK, NEW YORK



REQ.	ITEM	PART NO.	DESCRIPTION	SYMBOL
2	13	SCBS0632BN5	SCREW	
1	12	SCBS0440BN3	SCREW	
2	11	SCBS0348BN3	SCREW	
2	10	NTH0632BN8	NUT	
1	9	LWEO6MRN	WASHER	
3	8	LWEO4MRN	WASHER	
1	6	TS-101-PO1	TUBE SOCKET	V202
1	5	TE-104-2	GROUND LUG	
2	4	CB21QW102K	CAPACITOR	C233 C234
1	3	CM35C103J	CAPACITOR	C234
3	2	TE-102-2	STANDOFF	
1	1	LD-10099	PLATE	

**TMC(Canada)LIMITED**  
OTTAWA ONTARIO

DRIVER PLATE

SUB ASSEMBLY

WH DAVISON

TYPE & TEMPER

DRAWN

ELEC. DES. APP.

MECH. DES. APP.

CHECKED

FINAL APPROVAL

A-10307



A	2	SYMBOLS ADDED	10-12-62	7429	of	WHE	WHE
ISSUE	ITEM	CHANGED FROM	DATE	CN. NO.	DRAFTS	CHECKER	ENG. APP.
	1	ITEM 2 RELOCATED FROM PIN 10 TO 2					

TOLERANCES		SCALE N.T.S.
ALL OTHERS	DEC. DIM. ± FRAC. DIM. ± ANGULAR DIM. ±	DIMENSIONS IN INCHES UNLESS OTHERWISE SPECIFIED DRILL, PUNCH, COMMERCIAL STOCK SIZES AND MANUFACTURERS TOLERANCES ARE NOT INCLUDED.
FINISH & SPEC. NO.		

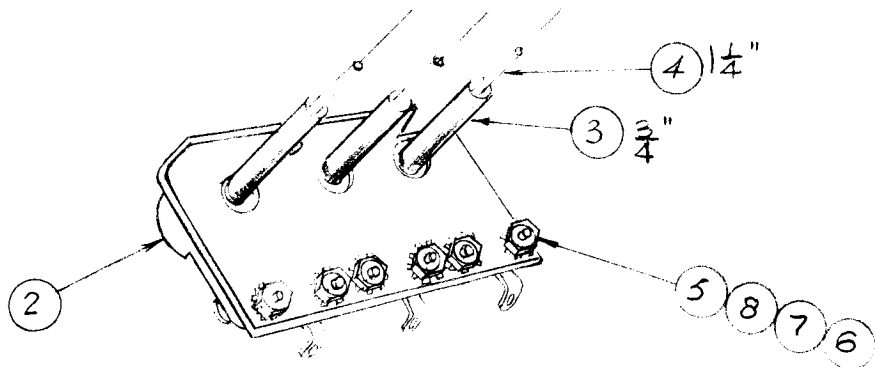
IF IT IS FOUND DESIRABLE TO CHANGE ANY TOLERANCE OR OTHER DETAIL SPECIFIED ON THIS DRAWING NOTIFY THE PURCHASER PROMPTLY.

A-10308

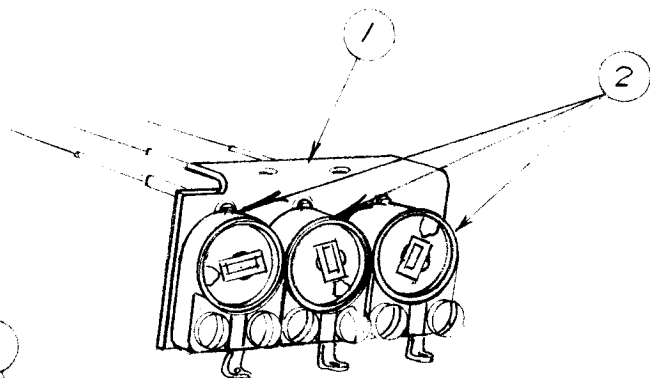
MAXIMUM ALLOWABLE TOLERANCES HAVE BEEN DETERMINED AND DEVIATIONS WILL BE CAUSE FOR REJECTION. REMOVE ALL BURRS AND SHARP EDGES

USED ON

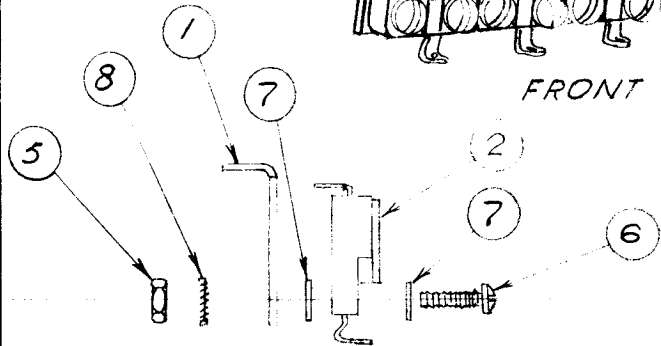
MODEL	PROJECT NO.	ASS'Y. NO.	DATE
RFA-1			1 MAR 1961



REAR VIEW



FRONT VIEW



**NOTICE TO PERSONS RECEIVING THIS DRAWING**

THE TECHNICAL MATERIEL CORPORATION claims proprietary right in the material disclosed herein. This drawing is issued in confidence and the information contained herein is not to be made available to any other person without the written consent of THE TECHNICAL MATERIEL CORPORATION. THE TECHNICAL MATERIEL CORPORATION is not responsible for any loss or damage to any property or for any injury to any person resulting from the use of this drawing.

Property of

THE TECHNICAL MATERIEL CORPORATION  
MAMARONECK, NEW YORK

6	8	LWEO4MRN	WASHER LOCK
12	7	WA-109-17	WASHER FIBRE
6	6	SCBS0440BN7	SCREW
6	5	NTH0440BN6	NUT
3	4	PX-104-1-.034	SLEEVING BLACK
3	3	PX-100-1-.125	SLEEVING BLACK
3	2	CV11C300	CAPACITOR TRIMMER
1	1	MS-10404	BRACKET

REQ.	ITEM	PART NO.	DESCRIPTION	SYMBOL
			<b>TMC(Canada)LIMITED</b>	
			OTTAWA ONTARIO	
			TRIMMER SUB ASS'Y	
			PAL-350	
			WH DAVISON	
			DRAWN	ELEC. DES. APP. MECH. DES. APP.
			CHECKED	FINAL APPROVAL
			A-10308	
			FINISH & SPEC. NO.	

ISSUE	ITEM	CHANGED FROM	DATE	CN. NO.	DRAFTS	CHECKER	ENG. APP.
TOLERANCES			SCALE <i>N.T.S.</i>				
ALL OTHERS			DIMENSIONS IN INCHES UNLESS OTHERWISE SPECIFIED				
DEC. DIM. ±			DRILL, PUNCH, COMMERCIAL STOCK SIZES AND MANUFACTURERS TOLERANCES ARE NOT INCLUDED.				
FRAC. DIM. ±							
ANGULAR DIM. ±							

IF IT IS FOUND DESIRABLE TO CHANGE ANY TOLERANCE OR OTHER DETAIL SPECIFIED ON THIS DRAWING NOTIFY THE PURCHASER PROMPTLY.

A10317 A

MAXIMUM ALLOWABLE TOLERANCES HAVE BEEN DETERMINED AND DEVIATIONS WILL BE CAUSE FOR REJECTION. REMOVE ALL BURRS AND SHARP EDGES

USED ON

MODEL

PROJECT NO.

ASS'Y. NO.

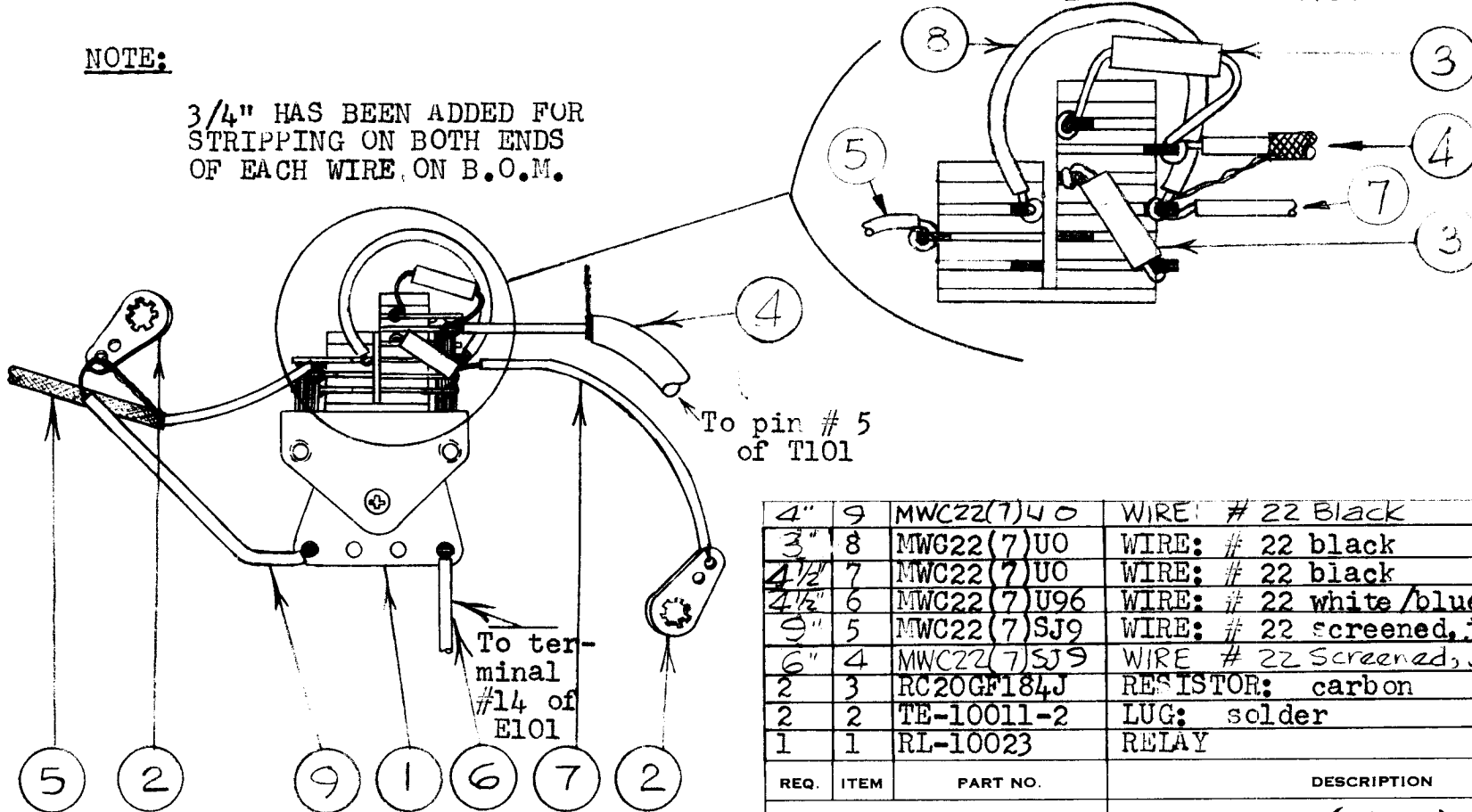
DATE

SBE-2CAN2 E1148P

6/4/61

**NOTE:**

3/4" HAS BEEN ADDED FOR STRIPPING ON BOTH ENDS OF EACH WIRE, ON B.O.M.



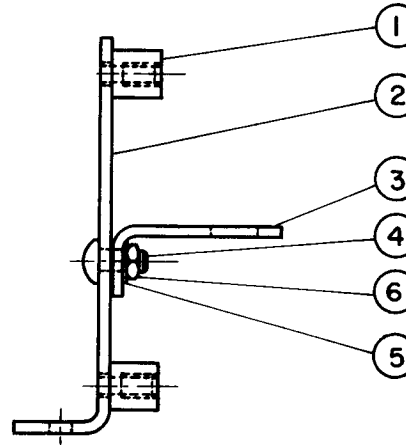
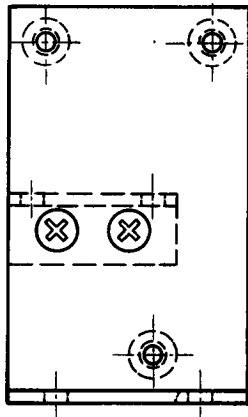
4"	9	MWC22(7)U0	WIRE: # 22 Black
3"	8	MWC22(7)U0	WIRE: # 22 black
4 1/2"	7	MWC22(7)U0	WIRE: # 22 black
4 1/2"	6	MWC22(7)U96	WIRE: # 22 white/blue
9"	5	MWC22(7)SJ9	WIRE: # 22 screened, jacketed, white
6"	4	MWC22(7)SJ9	WIRE # 22 Screened, Jacketed, white
2	3	RC20GF184J	RESISTOR: carbon
2	2	TE-10011-2	LUG: solder
1	1	RL-10023	RELAY

REQ.	ITEM	PART NO.	DESCRIPTION	SYMBOL
STOCK SIZE			<p><b>TMC(Canada)LIMITED</b>                      OTTAWA ONTARIO</p> <p>WIRING ASSEMBLY                      OF RELAY K102.</p> <p>JPC <i>h.v.</i></p>	
MATERIAL		WEIGHT PER PC.		
TYPE & TEMPER				
HEAT TREAT. SPEC.				
FINISH & SPEC. NO.			CHECKED	FINAL APPROVAL
			A10317 A	

A	1	Buildup Revised	7/27/61	5326	JPM	JPC	JPM
ISSUE	ITEM	CHANGED FROM	DATE	CN. NO.	DRAFTS	CHECKER	ENG. APP.

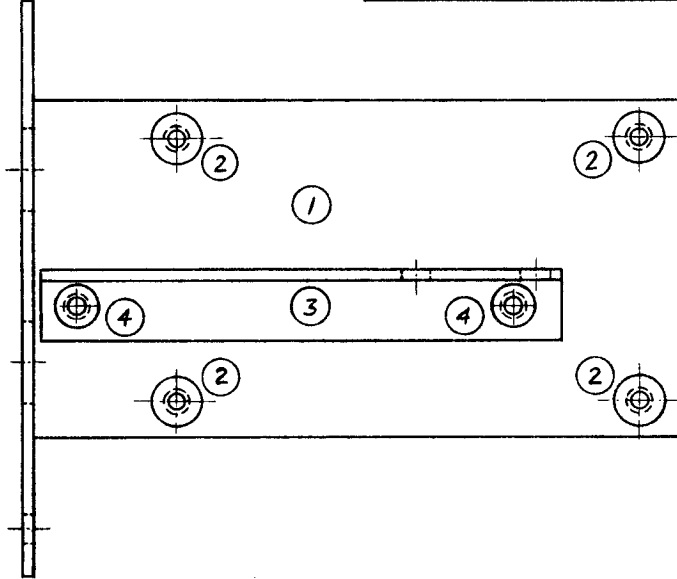
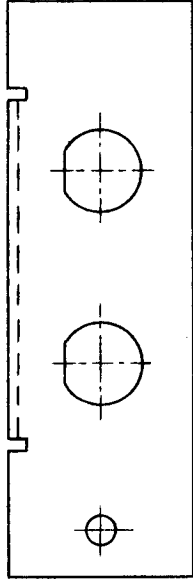
TOLERANCES		SCALE
ALL OTHERS	DEC. DIM. ± FRAC. DIM. ± ANGULAR DIM. ±	DIMENSIONS IN INCHES UNLESS OTHERWISE SPECIFIED DRILL, PUNCH, COMMERCIAL STOCK SIZES AND MANUFACTURERS TOLERANCES ARE NOT INCLUDED.

ISSUE	ITEM	CHANGED FROM	DATE	CN. NO.	DRAFTS	CHECKER	ENG. APP.	REQ.	ITEM	PART NO.	DESCRIPTION	SYMBOL
								3	1	TE 164 - 1	NUT, CLINCH	
								1	2	MS 10611	DRIVER BRACKET	
								1	3	MS 10612	DRIVER BOARD BARRIER	
								2	4	SCBPO440BN4	SCREW, MACHINE	
								2	5	LW104MRN	WASHER, LOCK, INTERNAL	
								2	6	NTHO440BN6	NUT, HEXAGON	



AMC20		020/65		A 10 383		5-10-65				<b>TMC (Canada) LIMITED</b> OTTAWA ONTARIO <b>DRIVER BRACKET ASSEMBLY</b>		
MODEL	PROJECT NO.	ASS'Y. NO.	DATE	STOCK SIZE								
USED ON								MATERIAL	WEIGHT PER PC.			
MAXIMUM ALLOWABLE TOLERANCES HAVE BEEN DETERMINED AND DEVIATIONS WILL BE CAUSE FOR REJECTION. REMOVE ALL BURRS AND SHARP EDGES				IF IT IS FOUND DESIRABLE TO CHANGE ANY TOLERANCE OR OTHER DETAIL SPECIFIED ON THIS DRAWING NOTIFY THE PURCHASER PROMPTLY.				TYPE & TEMPER		DRAWN: <i>Hus.</i> ELEC. DES. APP.: <i>[Signature]</i> MECH. DES. APP.: <i>[Signature]</i>		
TOLERANCES				SCALE 1:1				HEAT TREAT. SPEC.		CHECKED: <i>[Signature]</i> FINAL APPROVAL: <i>[Signature]</i>		
ALL OTHERS	DEC. DIM. ±	FRAC. DIM.		ANGULAR DIM		DIMENSIONS IN INCHES UNLESS OTHERWISE SPECIFIED		FINISH & SPEC. NO.		A 10 382		Ø

ISSUE	ITEM	CHANGED FROM	DATE	CN. NO.	DRAFTS	CHECKER	ENG. APP.	REQ.	ITEM	PART NO.	DESCRIPTION	SYMBOL
								1	1	MS 10 613	CHASSIS, MODULE	
								4	2	TE 164-1	NUT, CLINCH	
								1	3	MS 10 614	SHIELD, MODULE	
								2	4	EY 100-2	EYELET, FLAT FLANGE	



AMC 20		020/65		A 10 386		23-10-65				<b>TMC (Canada) LIMITED</b> OTTAWA ONTARIO OUTPUT MODULE CHASSIS ASS'Y			
MODEL	PROJECT NO.	ASS'Y. NO.	DATE	STOCK SIZE									
USED ON				MATERIAL		WEIGHT PER PC.		TYPE & TEMPER		HWS, DRAWN CHECKED			
MAXIMUM ALLOWABLE TOLERANCES HAVE BEEN DETERMINED AND DEVIATIONS WILL BE CAUSE FOR REJECTION. REMOVE ALL BURRS AND SHARP EDGES				IF IT IS FOUND DESIRABLE TO CHANGE ANY TOLERANCE OR OTHER DETAIL SPECIFIED ON THIS DRAWING NOTIFY THE PURCHASER PROMPTLY.				HEAT TREAT. SPEC.		ELEC. DES. APP.		MECH. DES. APP.	
TOLERANCES				SCALE 1:1				FINISH & SPEC. NO.		FINAL APPROVAL		A 10 384	Ø
ALL OTHERS	DEC. DIM. ±			DIMENSIONS IN INCHES UNLESS OTHERWISE SPECIFIED									
	FRAC. DIM. ±			DRILL, PUNCH, COMMERCIAL STOCK SIZES AND MANUFACTURERS TOLERANCES ARE NOT INCLUDED.									
	ANGULAR DIM. ±												