

IF IT IS FOUND DESIRABLE TO CHANGE ANY TOLERANCE OR OTHER DETAIL SPECIFIED ON THIS DRAWING NOTIFY THE PURCHASER PROMPTLY.

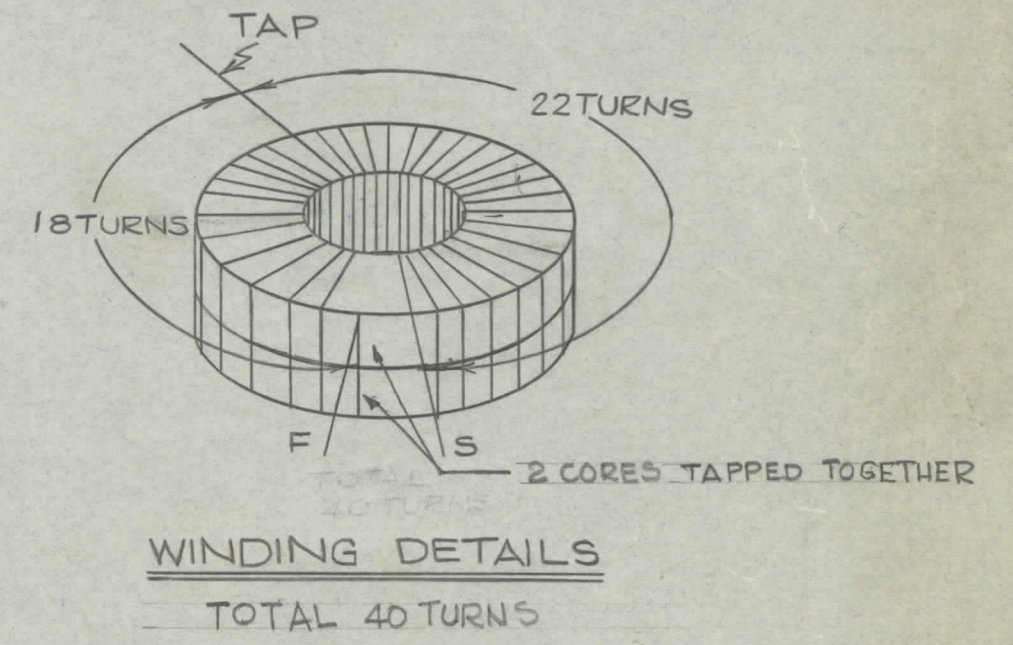
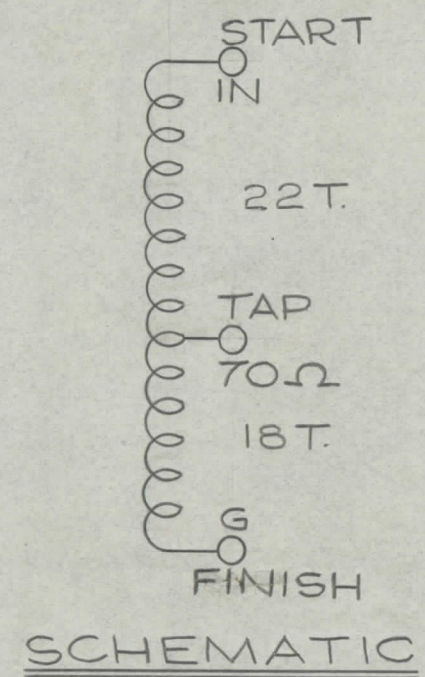
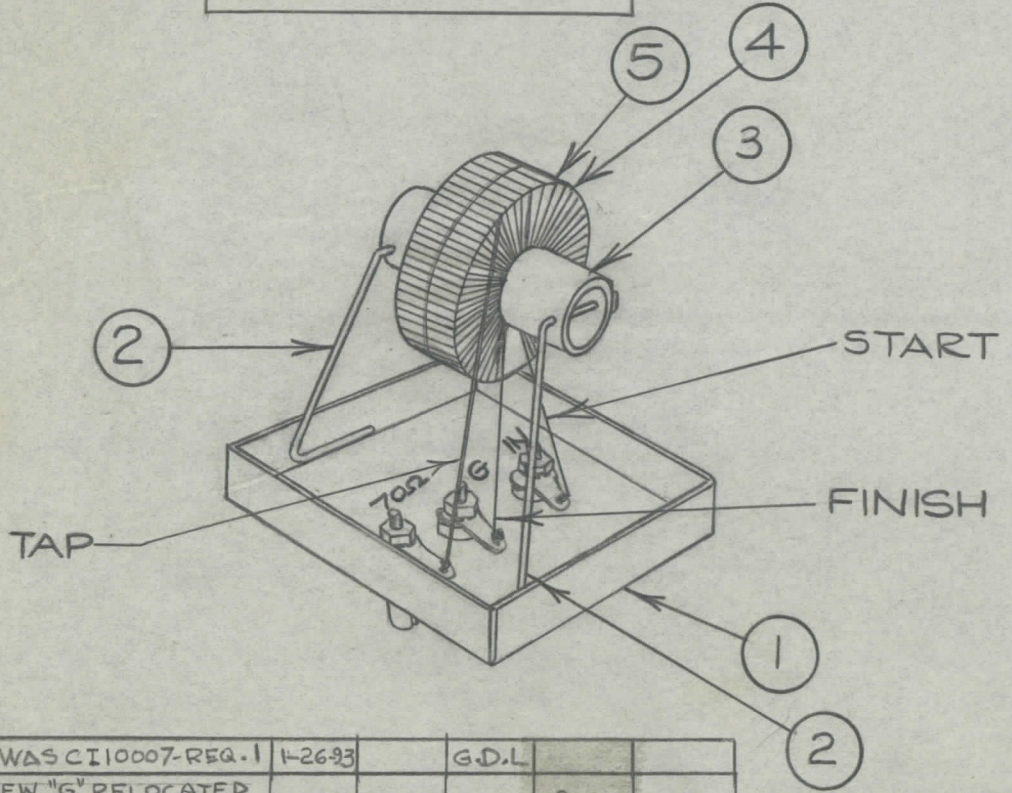
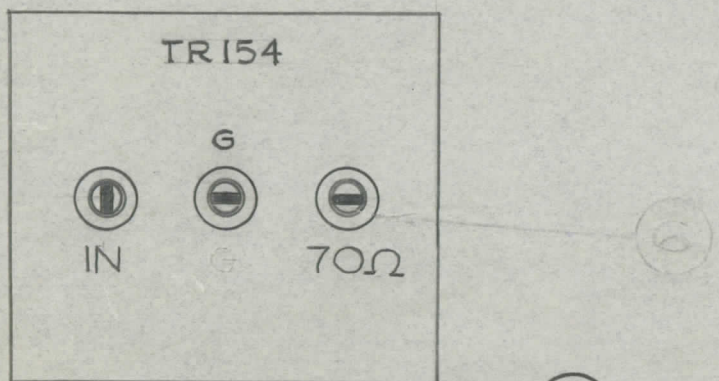
MAXIMUM ALLOWABLE TOLERANCES HAVE BEEN DETERMINED AND DEVIATIONS WILL BE CAUSE FOR REJECTION. REMOVE ALL BURRS AND SHARP EDGES

A10281 D

**NOT TO BE RELEASED  
W/O AUTHORIZATION**

AUTH. BY: \_\_\_\_\_  
DATE: \_\_\_\_\_

SINGLE LAYER EVENLY SPACED  
ON 340° OF CORE 40T. TAPPED AT 22 TURNS



**NOTE:**  
1. POT WITH IT.8 GL10003 TO SPEC. S10074.  
2. TEST TO SPEC S10077.

AR	8	GL10003	POTTING COMPOUND	
AR	7	GL10001	ADHESIVE	
AR	6	BS100	SOLDER, TIN ALLOY	
AR	5	WI10001-11	WIRE, NO.30 DCC.	
2	4	CI10001-2	CORE, TOROID	
1	3	CF10012	FORM, COIL	
2	2	MS10259	SUPPORT, COIL	
1	1	BX10012	TRANSFORMER CAN	

REQ.	ITEM	PART NO.	DESCRIPTION	SYMBOL
<b>TMC (Canada) LIMITED</b> OTTAWA ONTARIO				
<b>ASS'Y OF TR-154</b>				
STOCK SIZE				
MATERIAL		WEIGHT PER PC.		
TYPE & TEMPER		JPC		
HEAT TREAT. SPEC.		DRAWN: JPC ELEC. DES. APP.: [Signature] MECH. DES. APP.: [Signature]		
FINISH & SPEC. NO.		CHECKED: [Signature] FINAL APPROVAL: [Signature]		

D		ITEM 4 WAS CI10007-REQ.1	1-26-93	G.D.L.			
C	4	ON TOP VIEW "G" RELOCATED					
	3	NOTE 1,2 ADD., ON TOP VIEW TR154 AND					
	2	IT.6 WAS A10295, IT.7,8 ADDED	8-27-64	12153	hpb	JCB	MMA
	1	IT.1 WAS MS10486, IT.5 WAS WI100062					
B	1	TITLE WAS "ASSY OF TR154/156"	9-17-63	9976		JW	JCS
A		REDRAWN	12/11/60		JC	AMS	JCS
ISSUE	ITEM	CHANGED FROM	DATE	CN. NO.	DRAFTS	CHECKER	ENG. APP.

TOLERANCES		SCALE:	
ALL OTHERS	DEC. DIM. ± FRAC. DIM. ± ANGULAR DIM. ±	DRILL, PUNCH, COMMERCIAL STOCK SIZES AND MANUFACTURERS TOLERANCES ARE NOT INCLUDED.	

MODEL	PROJECT NO.	ASS'Y. NO.	DATE
			16/11/60
USED ON			