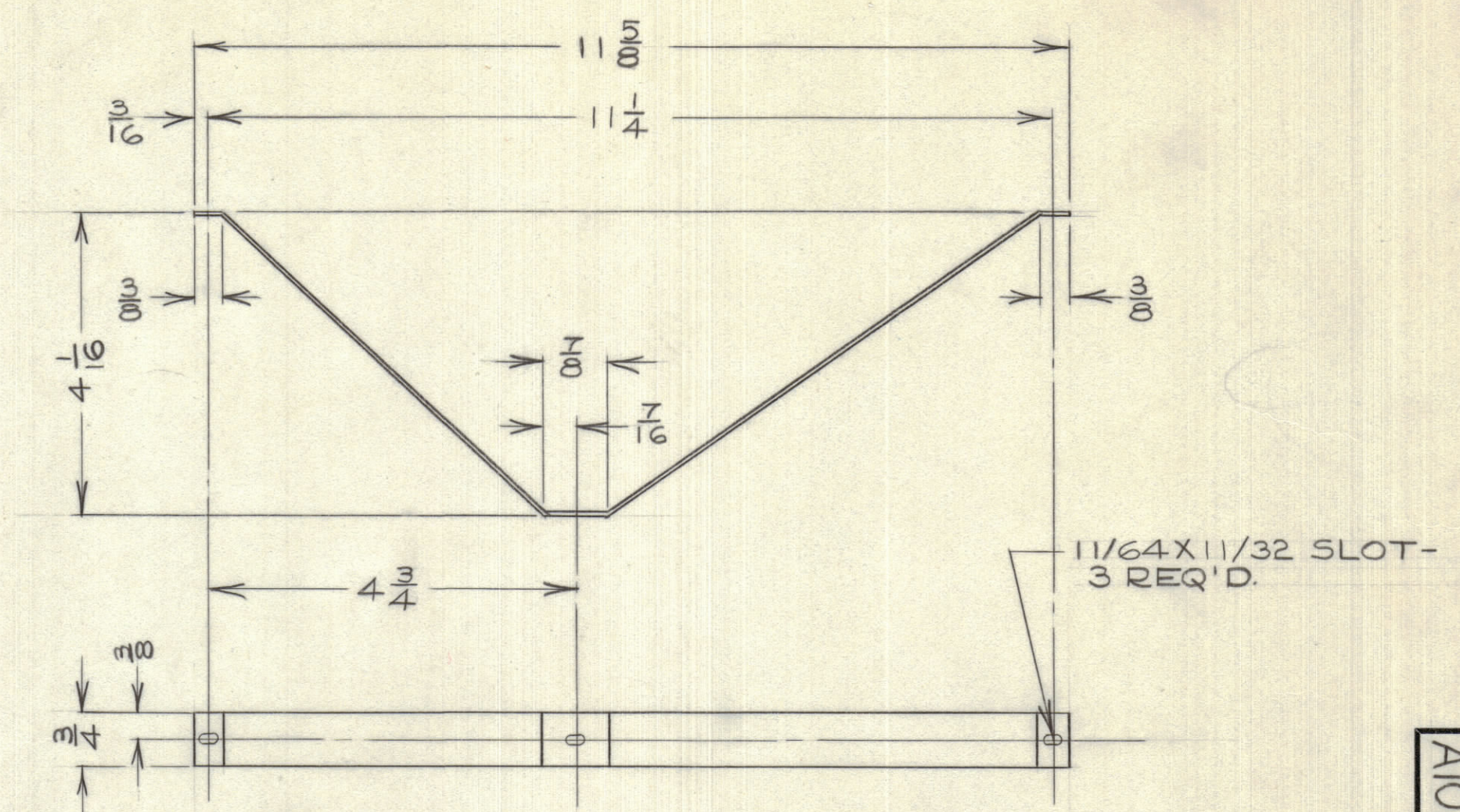
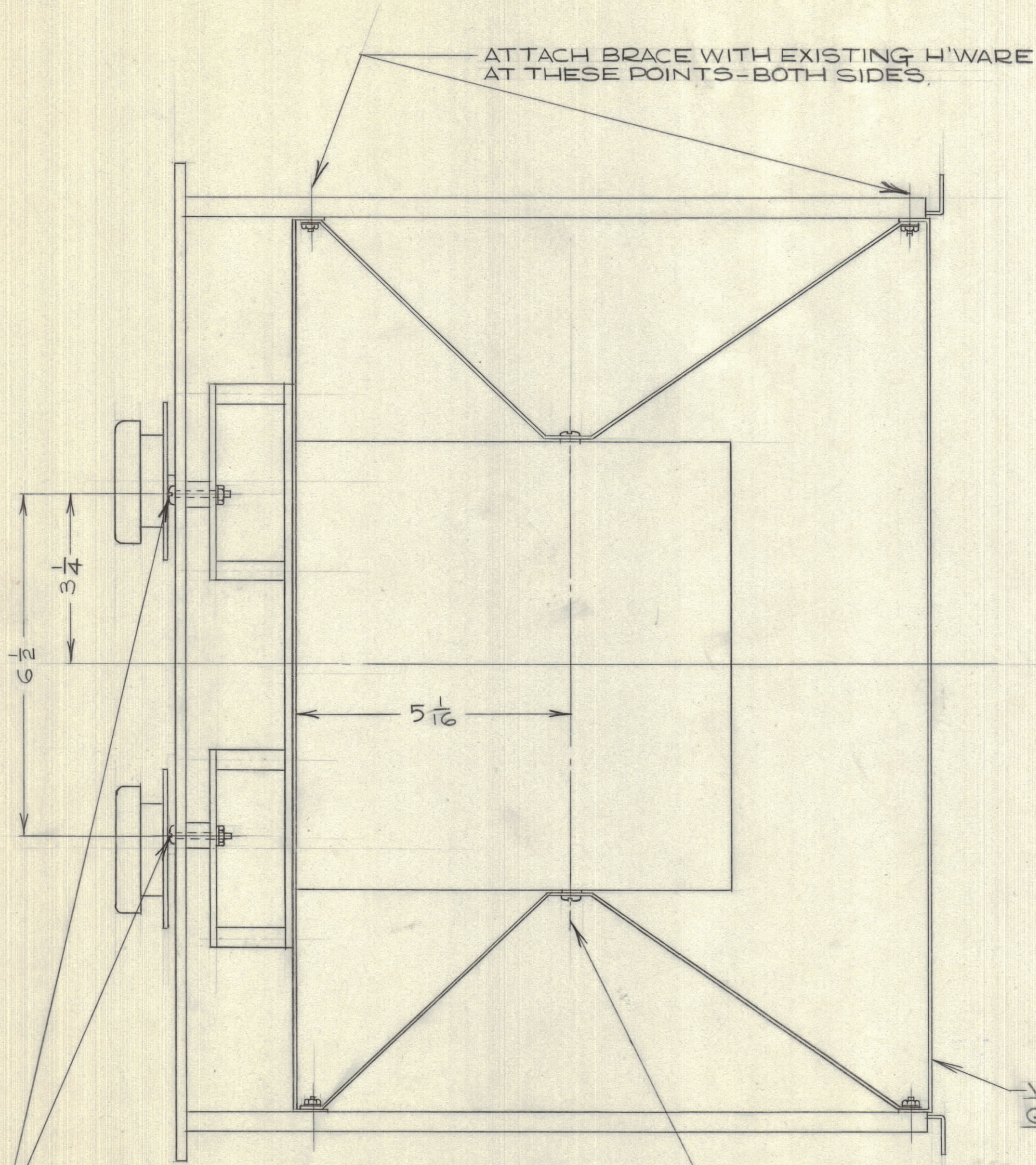
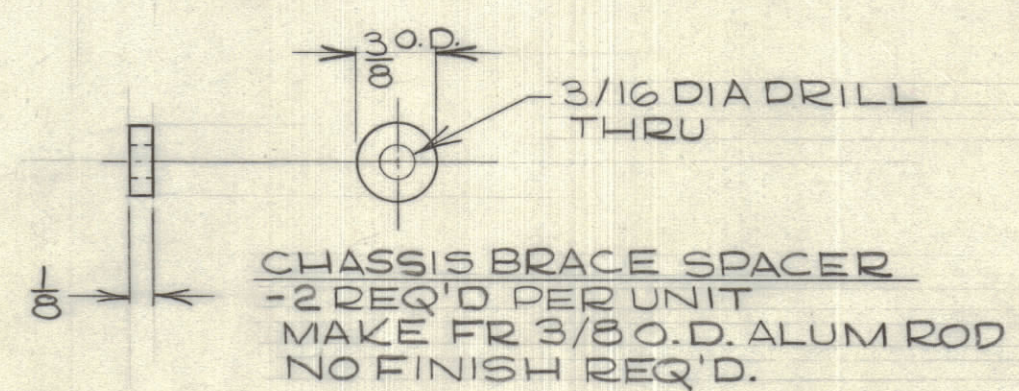
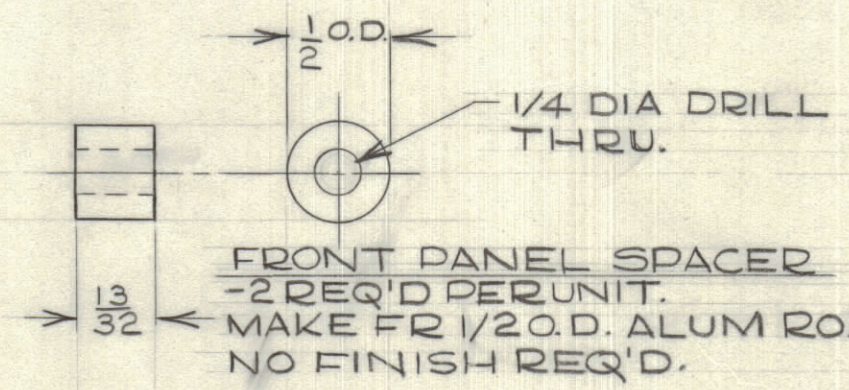


IF IT IS FOUND DESIRABLE TO CHANGE ANY TOLERANCE OR OTHER DETAIL SPECIFIED ON THIS DRAWING NOTIFY THE PURCHASER PROMPTLY.

MAXIMUM ALLOWABLE TOLERANCES HAVE BEEN DETERMINED AND DEVIATIONS WILL BE CAUSE FOR REJECTION. REMOVE ALL BURRS AND SHARP EDGES



BRACE: MAKE FR 12 GA ALUM. ETCH & IRIDITE
2 REQ'D PER UNIT.



VIEW FROM BOTTOM OF GPR-90 RECEIVER.

#11 DRILL THRU (FRONT PANEL & PLATE),
13/16 FR. BOTTOM OF PANEL,
2 HOLES, ASSEMBLE WITH FRONT PANEL
SPACER, SCBS 1032 BN16, NTH1032 BN12,
LWE10MRN

5/32 DIA DRILL, 9/16 FROM OUTSIDE OF
BOTTOM COVER. RELIEVE BOTTOM
COVER TO CLEAR SPACER - BOTH SIDES
ASSEMBLE WITH CHASSIS BRACE SPACER,
SCBS0632 BN 7, NTH0632 BN8, LW106MRN

NOTICE TO PERSONS RECEIVING THIS DRAWING

THE TECHNICAL MATERIEL CORPORATION claims proprietary right in the material disclosed hereon. This drawing is issued in confidence for engineering information only and may not be reproduced or used to manufacture anything shown hereon without permission from THE TECHNICAL MATERIEL CORPORATION to the user. This drawing is loaned for mutual assistance and is subject to recall at any time.

Property of:
THE TECHNICAL MATERIEL CORPORATION
MAMARONECK, NEW YORK

GPR-90
MODEL PROJECT No. ASS'Y. No. DATE
DEC 15/59
USED ON

REQ.	ITEM	PART NO.	DESCRIPTION	SYMBOL
			TMC (Canada) LIMITED OTTAWA ONTARIO	
			BRACING MOD'S-DETAILS GPR-90	
			DCM DRAWN	
			ELEC. DES. APP.	MECH. DES. APP.
			CHECKED	FINAL APPROVAL
				A10248

A10248