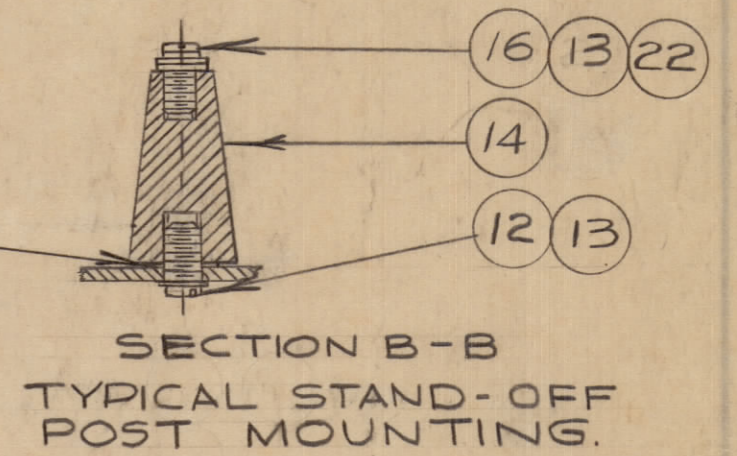
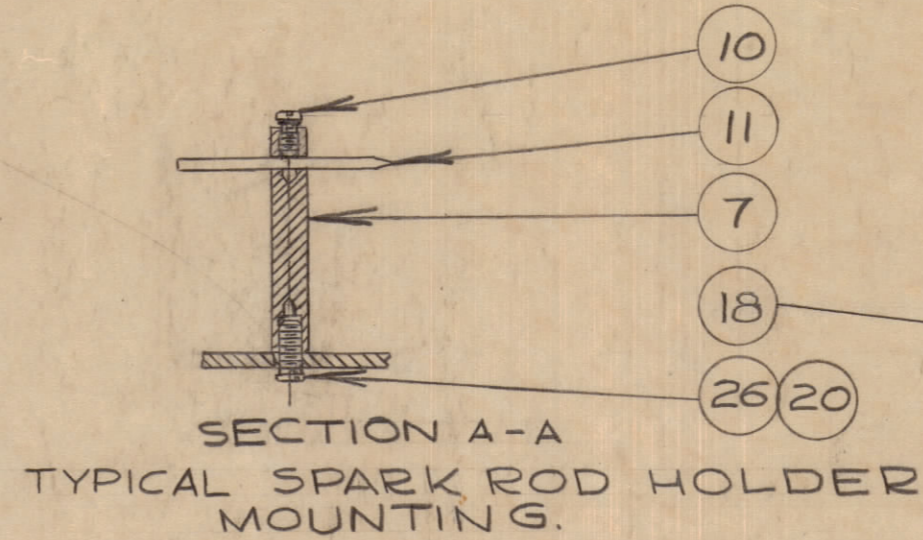
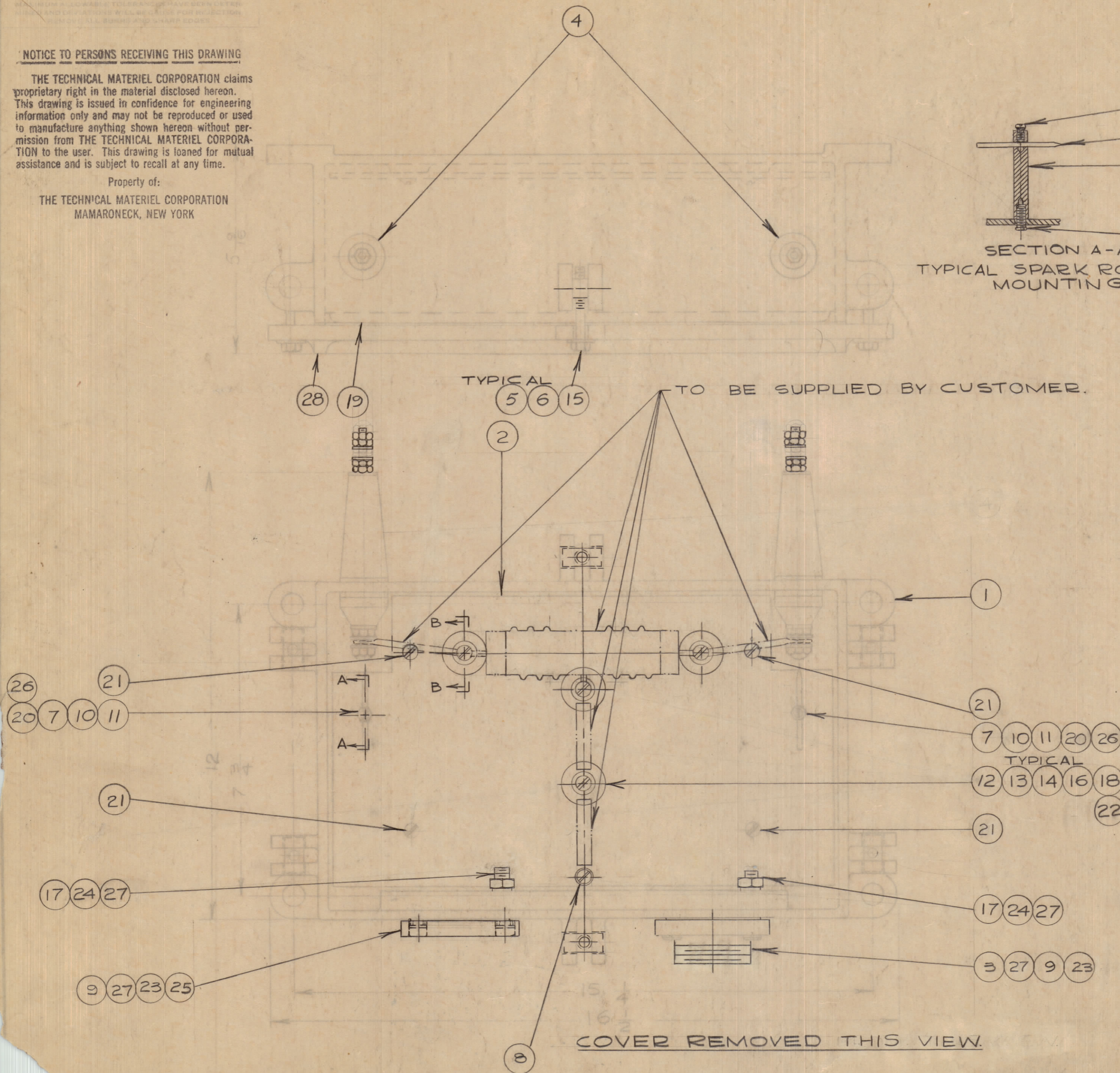


**NOTICE TO PERSONS RECEIVING THIS DRAWING**

THE TECHNICAL MATERIEL CORPORATION claims proprietary right in the material disclosed hereon. This drawing is issued in confidence for engineering information only and may not be reproduced or used to manufacture anything shown hereon without permission from THE TECHNICAL MATERIEL CORPORATION to the user. This drawing is loaned for mutual assistance and is subject to recall at any time.

Property of:  
THE TECHNICAL MATERIEL CORPORATION  
MAMARONECK, NEW YORK



TO BE SUPPLIED BY CUSTOMER.

COVER REMOVED THIS VIEW.

|    |    |             |                   |
|----|----|-------------|-------------------|
| 1  | 28 | PM114-B     | COVER             |
| 10 | 27 | LWS25MRN    | LOCKWASHER        |
| 2  | 26 | SCBS0632BN6 | SCREW             |
| 1  | 25 | PM10067     | BLANKING PLATE    |
| 2  | 24 | NT2520BN14  | NUT               |
| 2  | 23 | GA104       | GASKET            |
| 8  | 22 | FW1032LBN   | WASHER            |
| 4  | 21 | SCBS1032BN6 | SCREW             |
| 2  | 20 | LWS06MN     | LOCKWASHER        |
| 1  | 19 | GA107       | GASKET            |
| 4  | 18 | WA109-56    | WASHER            |
| 2  | 17 | SCI000224   | SCREW             |
| 4  | 16 | LW110MRN    | LOCKWASHER        |
| 6  | 15 | FW25M55     | WASHER            |
| 4  | 14 | NS10004     | STAND-OFF POST    |
| 8  | 13 | SCBS1032BN6 | SCREW             |
| 4  | 12 | LWE10MRN    | LOCKWASHER        |
| 2  | 11 | PM103-B     | SPARK ROD         |
| 2  | 10 | SCBS0632BN6 | SCREW             |
| 6  | 9  | SCI0002-10  | SCREW             |
| 1  | 8  | A10238      | GROUND POST ASS'Y |
| 2  | 7  | PM10064     | SPARK ROD HOLDER  |
| 6  | 6  | SCI08-9     | BOLT HEX. HD.     |
| 6  | 5  | PM100-B     | PIN, COVER BOLT   |
| 2  | 4  | A102 B      | INSULATOR ASS'Y   |
| 1  | 3  | PM107-F     | FLANGE            |
| 1  | 2  | MS10378     | PLATE             |
| 1  | 1  | MS10376     | CASE              |

| CHANGED FROM | DATE | CHK. NO. | DRAWN | CHECKED | ENG. APP. |
|--------------|------|----------|-------|---------|-----------|
|              |      |          |       |         |           |

TOLERANCES: SCALE 1:2  
DRILL PUNCH, COMMERCIAL STOCK  
SIZES AND MANUFACTURERS  
TOLERANCES ARE NOT INCLUDED.

HLC-5 ST1078 NOV. 24/58

TMC (Canada) LIMITED  
OTTAWA ONTARIO  
ASSY OF HLC-5

JPC  
DCM

A10242

IF IT IS FOUND DESIRABLE TO CHANGE ANY TOLERANCE OR OTHER DETAIL SPECIFIED ON THIS DRAWING NOTIFY THE PURCHASER PROMPTLY.

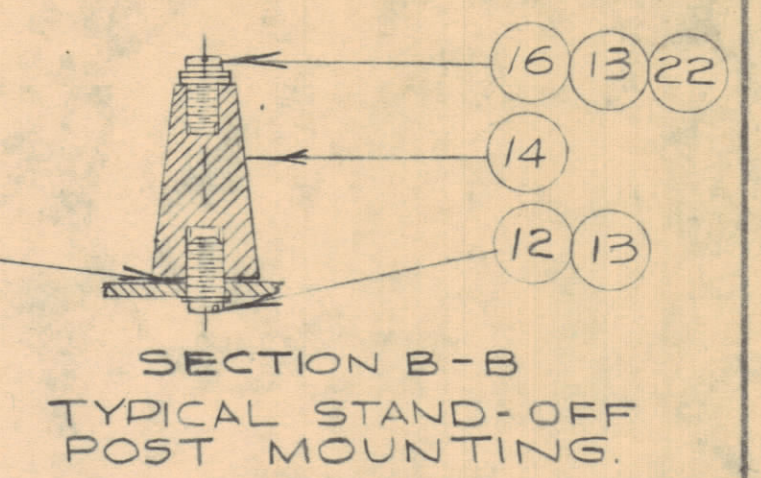
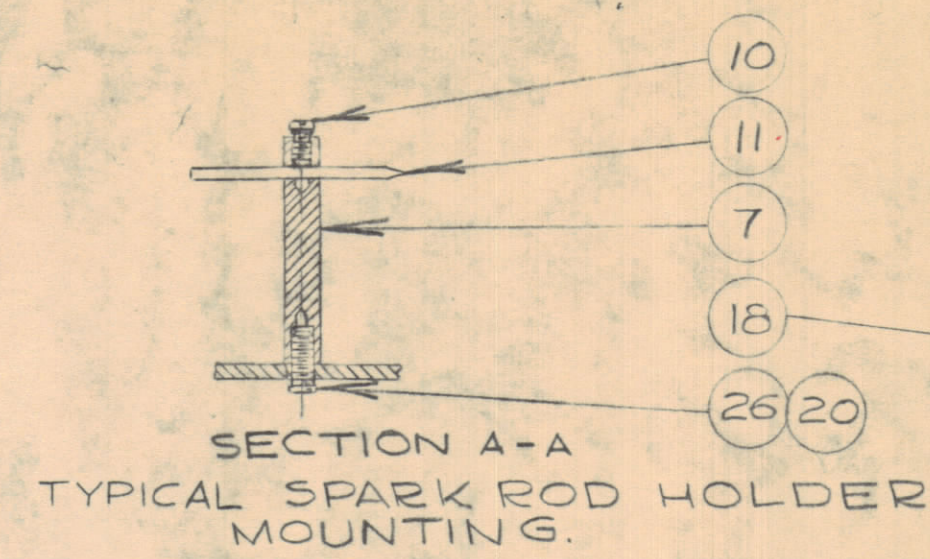
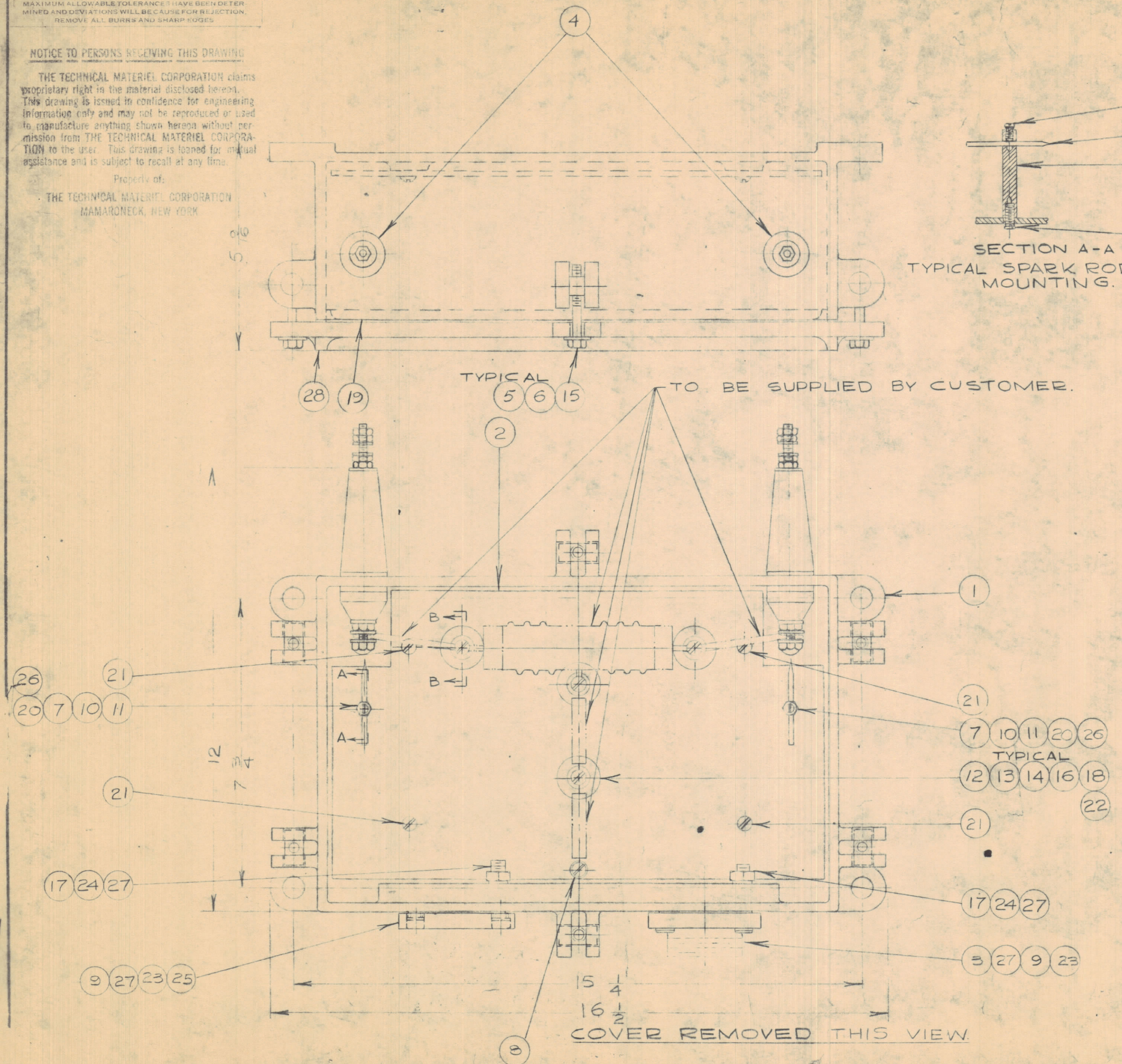
MAXIMUM ALLOWABLE TOLERANCES HAVE BEEN DETERMINED AND DEVIATIONS WILL BE CAUSE FOR REJECTION. REMOVE ALL BURRS AND SHARP EDGES.

**NOTICE TO PERSONS RECEIVING THIS DRAWING**

THE TECHNICAL MATERIEL CORPORATION claims proprietary right in the material disclosed hereon. This drawing is issued in confidence for engineering information only and may not be reproduced or used to manufacture anything shown hereon without permission from THE TECHNICAL MATERIEL CORPORATION to the user. This drawing is loaned for mutual assistance and is subject to recall at any time.

Property of:

THE TECHNICAL MATERIEL CORPORATION  
MAMARONECK, NEW YORK



TYPICAL 5 6 15 TO BE SUPPLIED BY CUSTOMER.

COVER REMOVED THIS VIEW.

|    |    |             |                   |
|----|----|-------------|-------------------|
| 1  | 28 | PM114-B     | COVER             |
| 10 | 27 | LWS25MRN    | LOCKWASHER        |
| 2  | 26 | SCBS0632BN6 | SCREW             |
| 1  | 25 | PM10067     | BLANKING PLATE    |
| 2  | 24 | NT2520BN14  | NUT               |
| 2  | 23 | GA104       | GASKET            |
| 8  | 22 | FW1032LBN   | WASHER            |
| 4  | 21 | SCBS1032BN5 | SCREW             |
| 2  | 20 | LWS06MRN    | LOCK WASHER       |
| 1  | 19 | GA107       | GASKET            |
| 4  | 18 | WA109-56    | WASHER            |
| 2  | 17 | SC10002-24  | SCREW             |
| 4  | 16 | LW110MRN    | LOCKWASHER        |
| 6  | 15 | FW25M55     | WASHER            |
| 4  | 14 | NS10004     | STAND-OFF POST    |
| 3  | 13 | SCBS1032BN6 | SCREW             |
| 4  | 12 | LWE10MRN    | LOCKWASHER        |
| 2  | 11 | PM103-B     | SPARK ROD         |
| 2  | 10 | SCBS0632BN6 | SCREW             |
| 6  | 9  | SC10002-10  | SCREW             |
| 1  | 8  | A10238      | GROUND POST ASS'Y |
| 2  | 7  | PM10064     | SPARK ROD HOLDER  |
| 6  | 6  | SC108-9     | BOLT HEX. HD.     |
| 6  | 5  | PM100-B     | PIN COVER BOLT    |
| 2  | 4  | A102 B      | INSULATOR ASS'Y   |
| 1  | 3  | PM107-F     | FLANGE            |
| 1  | 2  | MS10378     | PLATE             |
| 1  | 1  | MS10376     | CASE              |

A10242

|              |      |                                |        |         |           |
|--------------|------|--------------------------------|--------|---------|-----------|
| CHANGED FROM | DATE | CN. NO.                        | DRAFTS | CHECKER | ENG. APP. |
| TOLERANCES   |      | SCALE: 1:2                     |        |         |           |
| DIM. ±       |      | DRILL, PUNCH, COMMERCIAL STOCK |        |         |           |
| H/LAR DIM ±  |      | SIZES AND MANUFACTURERS        |        |         |           |
|              |      | TOLERANCES ARE NOT INCLUDED.   |        |         |           |

HLC-5 5T1078 NOV. 24/59  
 MODEL PROJECT NO. ASS'Y. NO. DATE  
 USED ON

|  |          |                                 |        |
|--|----------|---------------------------------|--------|
| REQ. ITEM                              | PART NO. | DESCRIPTION                     | SYMBOL |
| TMC (Canada) LIMITED<br>OTTAWA ONTARIO |          |                                 |        |
| ASS'Y OF HLC-5                         |          |                                 |        |
| STOCK SIZE                             |          |                                 |        |
| MATERIAL                               |          | WEIGHT PER PC.                  |        |
| TYPE & TEMPER                          |          | JPC                             |        |
| HEAT TREAT. SPEC.                      |          | DRAWN<br>DCM                    |        |
| FINISH & SPEC. NO.                     |          | ELEC. DES. APP. MECH. DES. APP. |        |
|  |          | CHECKED FINAL APPROVAL          |        |
|  |          | A10242                          |        |