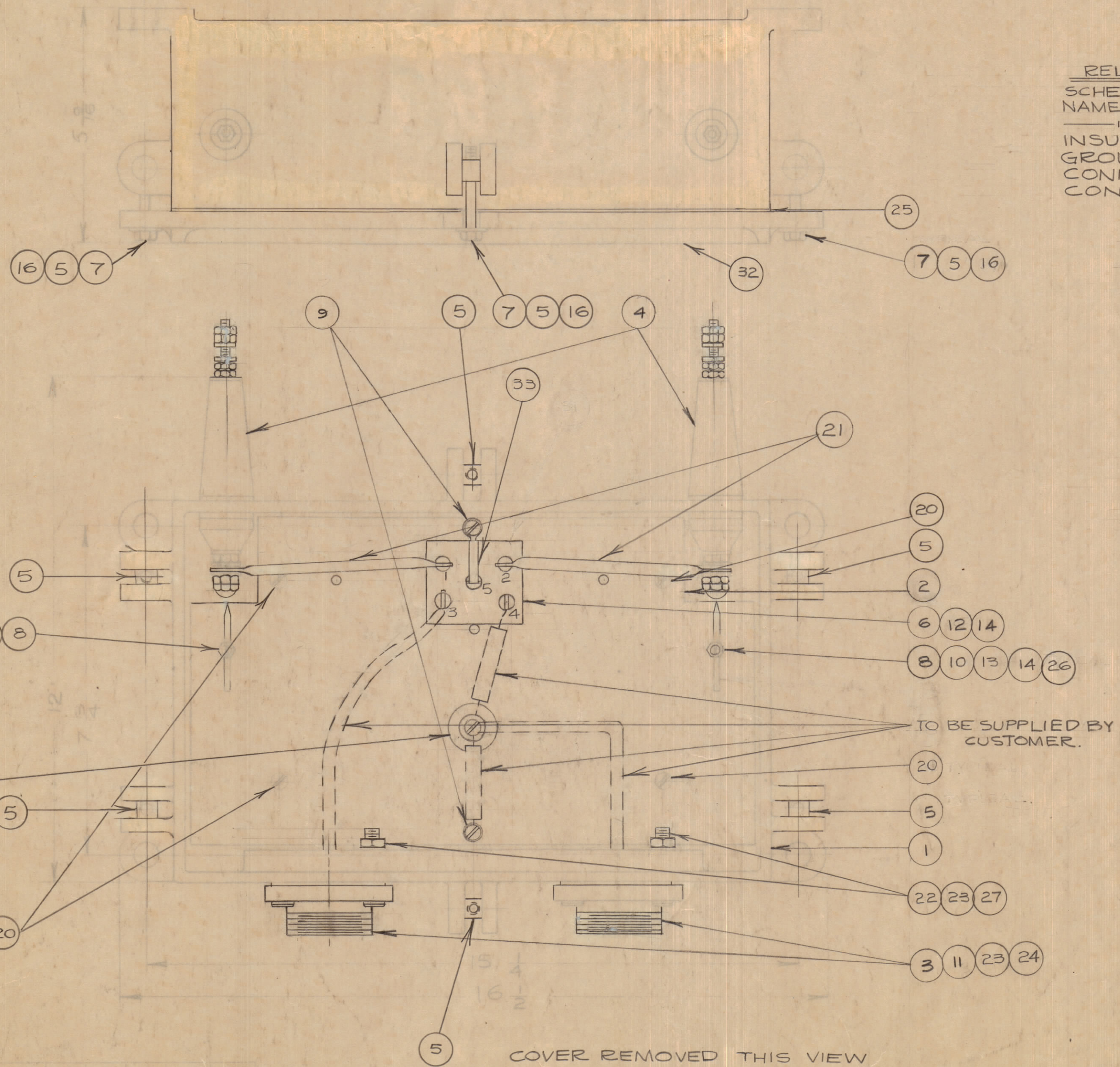


PERFORMED INSPECTION WITH ANY TOLERANCE OR DIMENSIONAL SPECIFICATION THIS DRAWING MUST BE PURCHASED SEPARATELY.
 MAXIMUM ALLOWABLE TOLERANCES HAVE BEEN DETERMINED AND NO OBJECTION WILL BE CAUSE FOR REJECTION. INDICATE ALL DIMENSIONS AND SPACING CODES.



RELATING DRAWINGS
 SCHEMATIC - CK10369.
 NAMEPLATE MTG. DET.-PM10068.
 " " - NP10061-2.
 INSULATOR ASS'Y - A102-5.
 GROUND POST ASS'Y - A10238
 CONNECTOR ASS'Y - FPI0004
 CONNECTOR, GROUND ASS'Y - FPI0005.

1	33	FPI0005	GROUND CONNECTOR ASS'Y
1	32	PM114	COVER
	31	DELETED	NOT USED
1	30	WA109-56	WASHER
1	29	WA10MRN	WASHER
2	28	SCBS1032BN8	SCREW
2	27	NT2520BN14	NUT
2	26	SCBP0632BN8	SCREW
1	25	GA-107	GASKET
2	24	GA-102	GASKET
10	23	LWS25MRN	LOCKWASHER
2	22	SC10002-24	SCREW
2	21	FPI0004	CONNECTOR ASS'Y
4	20	SCBP1032BN6	SCREW
1	19	LWE10MRN	LOCKWASHER
3	18	FW10HBN	WASHER
1	17	NS10004	STAND-OFF POST
6	16	FW25MSS	WASHER
2	15	LWE06MRN	LOCKWASHER
6	14	LWS06MRN	LOCKWASHER
2	13	PM103	SPARK ROD
4	12	NTH0632BN8	NUT
6	11	SC10002	SCREW
2	10	SCBP0632BN6	SCREW
2	9	A10238	GROUND POST ASS'Y
2	8	PM10064	SPARK ROD HOLDER
6	7	SC108-9	BOLT HEX.
1	6	TR-155	TRANSFORMER
6	5	PM100	PIN, COVER BOLT
2	4	A102	INSULATOR ASS'Y
2	3	PM107	FLANGE
1	2	MS10378	PLATE
1	1	PM10073	CASE

TO BE SUPPLIED BY CUSTOMER.

COVER REMOVED THIS VIEW

REV.	CHANGED FROM	DATE	BY NO.	DRAWN	CHECKED	APP.
1						

SCALE: 1/2
 SMALL PUNCH, COMMERCIAL STOCK
 DIMENSIONS AND MANUFACTURERS
 TOLERANCES ARE NOT INCLUDED.

HLC-4 ST078 NOV 24/51

TMC (Canada) LIMITED
 OTTAWA ONTARIO
 ASSY OF HLC-4

JPC
 A10241