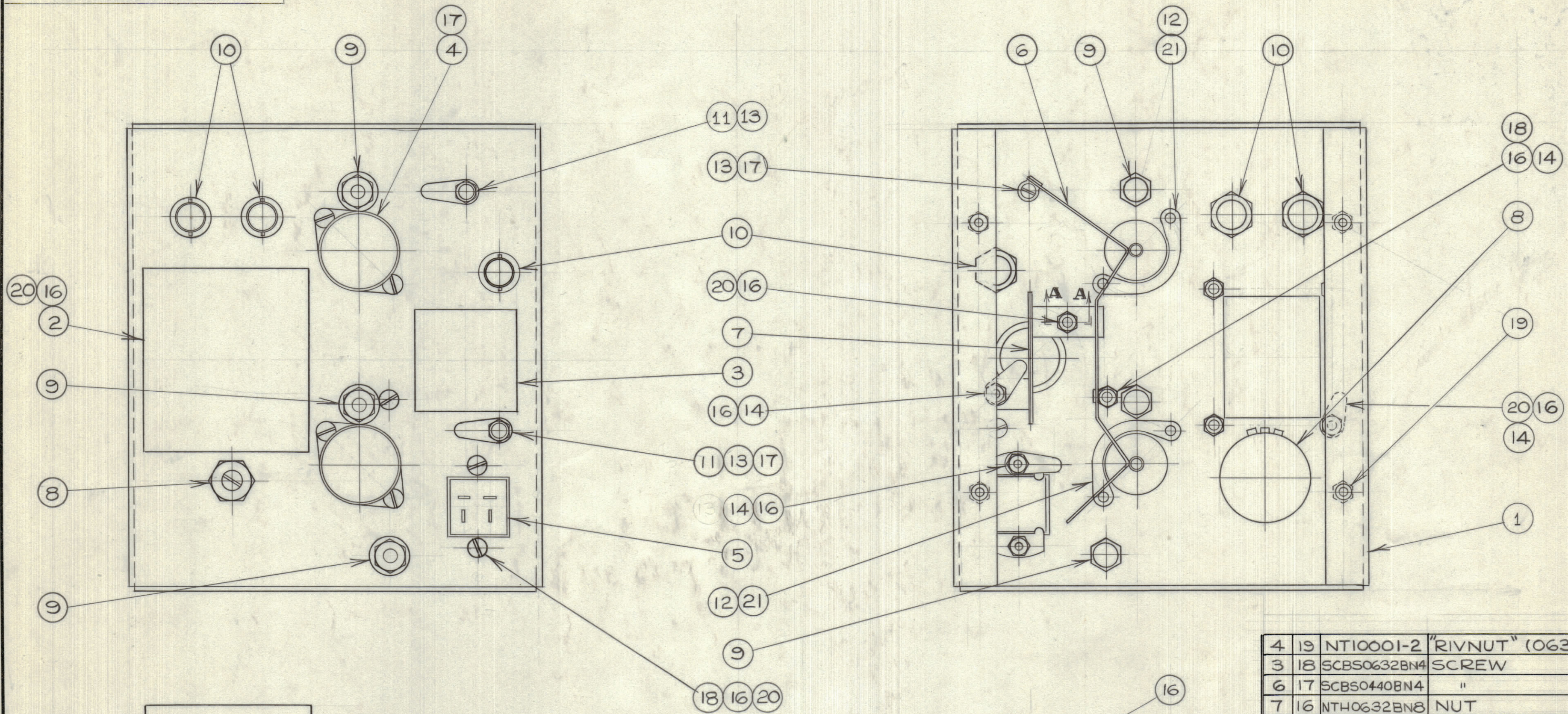
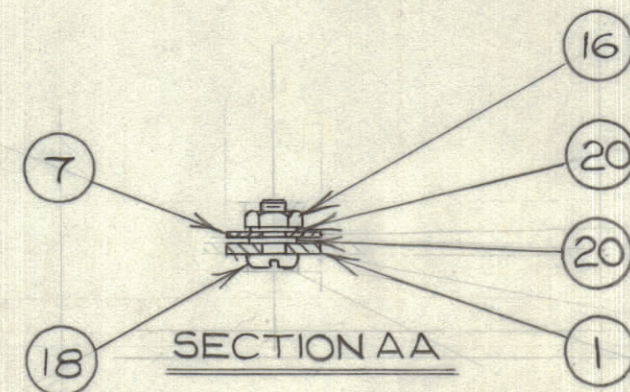
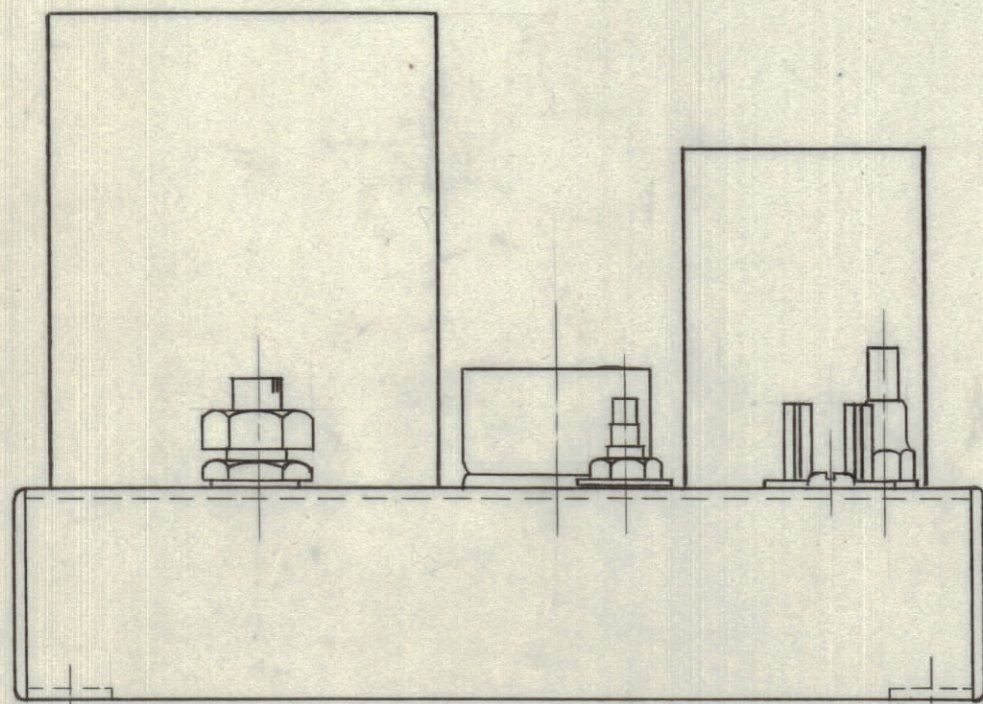


IF IT IS FOUND DESIRABLE TO CHANGE ANY TOLERANCE OR OTHER DETAIL SPECIFIED ON THIS DRAWING NOTIFY THE PURCHASER PROMPTLY.

MAXIMUM ALLOWABLE TOLERANCES HAVE BEEN DETERMINED AND DEVIATIONS WILL BE CAUSE FOR REJECTION. REMOVE ALL BURRS AND SHARP EDGES



A-10217



4	19	NT10001-2	"RIVNUT" (0632)
3	18	SCBS0632BN4	SCREW
6	17	SCBS0440BN4	"
7	16	NTH0632BN8	NUT
2	15	NTH0440BN6	"
4	14	TE104-2	SOLDER LUG
3	13	TE104-1	SOLDER LUG
2	12	NT-101-5	NUT STRAP
2	11	TE102-2	STAND-OFF
3	10	SO10003	JACK
3	9	TE114-2	FEED THRU
1	8	RA-10001-1	POTENTIOMETER
1	7	MS10317	SHIELD
1	6	MS10316	SCREEN
1	5	JJ120-1	JONES PLUG
2	4	TS103P01	TUBE SOCKET
1	3	TRO-78	TRANSFORMER
1	2	TRO-73	"
1	1	MS10300	CHASSIS

REQ	ITEM	PART No.	DESCRIPTION
6	21	LW104MRN	LOCKWASHER
8	20	LW106MRN	"

NOTICE TO PERSONS RECEIVING THIS DRAWING
 THE TECHNICAL MATERIEL CORPORATION claims proprietary right in the material disclosed hereon. This drawing is issued in confidence for engineering information only and may not be reproduced or used to manufacture anything shown hereon without permission from THE TECHNICAL MATERIEL CORPORATION to the user. This drawing is loaned for mutual assistance and is subject to recall at any time.

Property of:
THE TECHNICAL MATERIEL CORPORATION
 MAMARONECK, NEW YORK

AMC6-5 CE-646 MAY12/59

MODEL	PROJECT No.	ASS'Y. No.	DATE

USED ON

ISSUE	ITEM	CHANGED FROM	DATE	CN. NO.	DRAFTS	CHECKER	ENG. APP.
TOLERANCES							
SCALE: 1:1				DRILL, PUNCH, COMMERCIAL STOCK SIZES AND MANUFACTURERS TOLERANCES ARE NOT INCLUDED.			
ALL OTHERS		DEC. DIM. ± FRAC. DIM. ± ANGULAR DIM. ±					

REQ.	ITEM	PART No.	DESCRIPTION	SYMBOL
TMC (Canada) LIMITED OTTAWA ONTARIO				
PRE-AMP.				
SUB-ASSEMBLY				
STOCK SIZE		DRAWN: <i>M. K.</i>		
MATERIAL		ELEC. DES. APP.		MECH. DES. APP.
TYPE & TEMPER		CHECKED: <i>M. K.</i>		
HEAT TREAT. SPEC.		FINAL APPROVAL		
FINISH & SPEC. No.		A-10217		