

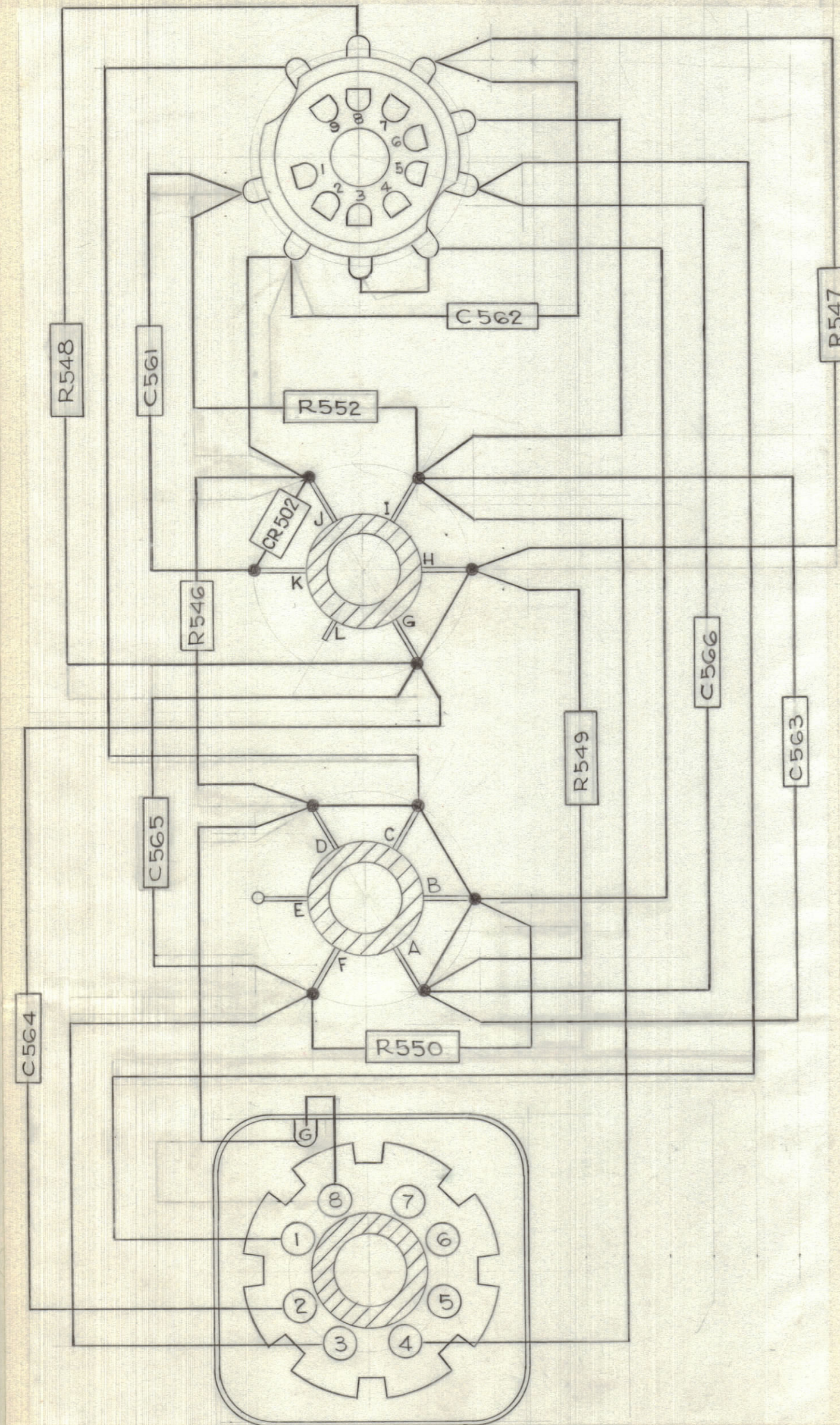
IF IT IS FOUND DESIRABLE TO CHANGE ANY TOLERANCE OR OTHER DETAIL SPECIFIED ON THIS DRAWING NOTIFY THE PURCHASER PROMPTLY.

MAXIMUM ALLOWABLE TOLERANCES HAVE BEEN DETERMINED AND DEVIATIONS WILL BE CAUSE FOR REJECTION. REMOVE ALL BURRS AND SHARP EDGES

NOTICE TO PERSONS RECEIVING THIS DRAWING

THE TECHNICAL MATERIEL CORPORATION claims proprietary right in the material disclosed herein. This drawing is issued in confidence for engineering information only and may not be reproduced or used to manufacture anything shown hereon without permission from THE TECHNICAL MATERIEL CORPORATION to the user. This drawing is loaned for mutual assistance and is subject to recall at any time.

Property of:
THE TECHNICAL MATERIEL CORPORATION
MAMARONECK, NEW YORK

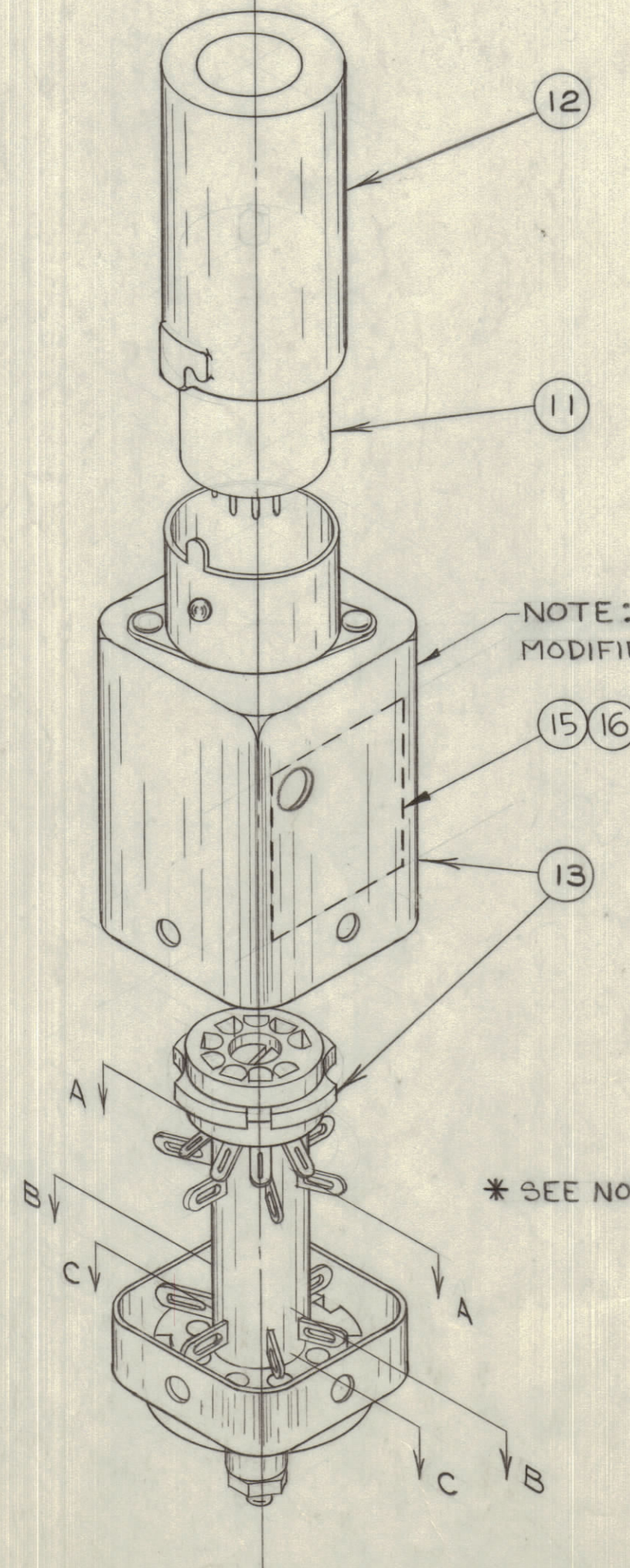


TOP VIEW

SECTION "AA"

SECTION "BB"

SECTION "CC"



NOTE: *
MODIFIED AS PER MS-10507

ALL RESISTORS 1/2 WATT

REF: SCHEMATIC - CK-626 (SIZE 2)

REQ.	ITEM	PART NO.	DESCRIPTION	SYMBOL
X	16	GL-101-1	ADHESIVE, PLIOBOND	
1	15	IM-10004	INSULATION, FISH PAPER	
AS REQD	14	WL100-7	22GA. TINNED CU WIRE	
1	13	PO148-9-1	CAN-VECTOR B8N(MINATURE)	
1	12	TS103-U02	SHIELD ELCO# TS103U02	
1	11	6DJ8	TUBE TYPE 6DJ8/6922	V510
1	10	CR10002	CRYSTAL - 10Mc/s TYPES-1	CR502
2	9	CC10005-1	CAPACITOR 1000µf	C561 C564
1	8	CV11D450	" " 5-50µf VAR.	C565
1	7	CC10003-4	" " 5.6µf ±10%	C562
2	6	CC10002-1	" " .01µf	C563 C566
1	5	RC20GF470J	RESISTOR 47 Ω ±5%	R548
1	4	" " 822J	" " 8.2K ±5%	R550
1	3	" " 471J	" " 470 Ω ±5%	R549
2	2	" " 474K	" " 470K ±10%	R546 R547
1	1	" " 104K	" " 100K ±10%	R552

* SEE NOTE

NOTES:

- ASSEMBLE SO THAT PIN 1 OF 9 PIN SOCKET ALIGNS WITH LUG K AND PIN 2 OF 8 PIN SOCKET
- CEMENT ITEM 10(CRYSTAL) TO ITEM 13 WITH "GLYPTOL"

* EFFECTIVE FROM SER No 5401 ONWARDS.

ISSUE	ITEM	CHANGED FROM	DATE	CN. NO.	DRAFTS	CHECKER	ENG. APP.
F	1	IT 8. WAS CN11500. IT 5 WAS RC20GF211J-270Ω	12-13-66	16960	RME	JCF	
E	1	ON BUILDUP PICT ITEMS 15 AND 16 ADDED	11/1/63	10135		JCF	
D	1	NOTE 1 - PIN 2 WAS "PIN 1" LUG K WAS "LUG D" PIN 1 WAS "PIN 9"	06/63	9161		JCF	
D	1	WIRING DIAGRAM REVISED & REDRAWN				JCF	

TOLERANCES

SCALE: NTS

ALL OTHERS
DEC. DIM. ±
FRAC. DIM. ±
ANGULAR DIM. ±

DRILL, PUNCH, COMMERCIAL STOCK SIZES AND MANUFACTURERS TOLERANCES ARE NOT INCLUDED.

AMC6-5

CE-646

MAR 18/59

MODEL	PROJECT No.	ASS'Y. No.	DATE

USED ON

STOCK SIZE	TMC (Canada) LIMITED	
	OTTAWA	ONTARIO
	OSCILLATOR ASSEMBLY	
	DCM	M. K. M. K.
	DRAWN	ELEC. DES. APP. MECH. DES. APP.
	CHECKED	FINAL APPROVAL
	A-10206 F	

A-10206 F