

IF IT IS FOUND DESIRABLE TO CHANGE ANY TOLERANCE OR OTHER DETAIL SPECIFIED ON THIS DRAWING NOTIFY THE PURCHASER PROMPTLY.

A10214 A

MAXIMUM ALLOWABLE TOLERANCES HAVE BEEN DETERMINED AND DEVIATIONS WILL BE CAUSE FOR REJECTION. REMOVE ALL BURRS AND SHARP EDGES

USED ON

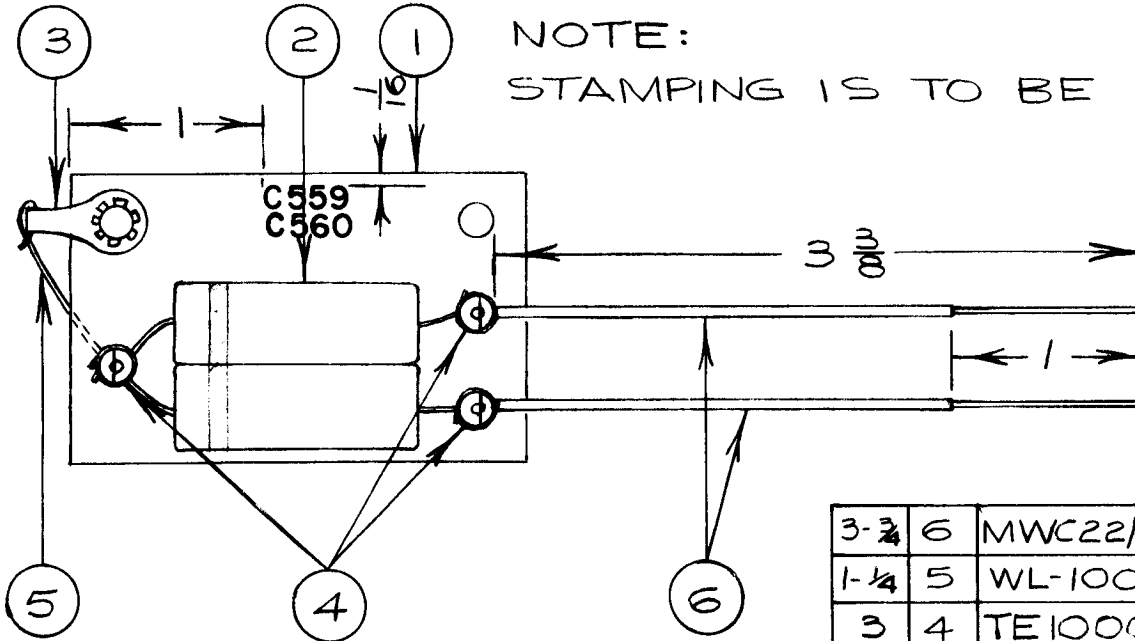
MODEL

PROJECT NO.

ASS'Y. NO.

DATE

AMC-65.CE646 A10219 5/27/60



NOTE:

STAMPING IS TO BE BLACK & 1/8 HIGH.

3-3/4	6	MWC22/TU90	WIRE - WH/BLACK .
1-1/4	5	WL-100-7	WIRE -BUSS BAR NO.22.
3	4	TE10003-1	TERMINAL
1	3	TE104-3	SOLDER LUG
2	2	CN100-17	CAPACITOR
1	1	PP10004	TERMINAL BOARD

REQ.	ITEM	PART NO.	DESCRIPTION	SYMBOL
			TMC(Canada)LIMITED OTTAWA ONTARIO	
STOCK SIZE			ASS'Y	
MATERIAL			LINE FILTER	
WEIGHT PER PC.				
TYPE & TEMPER			JPC	
HEAT TREAT. SPEC.			DRAWN	
FINISH & SPEC. NO.			ELEC. DES. APP. MECH. DES. APP.	
			CHECKED	
			FINAL APPROVAL	
			A10214 A	

A	REDRAWN	5/27/60	JC				
ISSUE	ITEM	CHANGED FROM	DATE	CN. NO.	DRAFTS	CHECKER	ENG. APP.
TOLERANCES			SCALE 1:1				
ALL OTHERS			DIMENSIONS IN INCHES UNLESS OTHERWISE SPECIFIED				
DEC. DIM. ±			DRILL, PUNCH, COMMERCIAL STOCK SIZES AND MANUFACTURERS TOLERANCES ARE NOT INCLUDED.				
FRAC. DIM. ±							
ANGULAR DIM. ±							

IF IT IS FOUND DESIRABLE TO CHANGE ANY TOLERANCE OR OTHER DETAIL SPECIFIED ON THIS DRAWING NOTIFY THE PURCHASER PROMPTLY.

A10238A

MAXIMUM ALLOWABLE TOLERANCES HAVE BEEN DETERMINED AND DEVIATIONS WILL BE CAUSE FOR REJECTION. REMOVE ALL BURRS AND SHARP EDGES

USED ON

MODEL

PROJECT NO.

ASS'Y. NO.

DATE

HLC ST1078 NOV.17/59

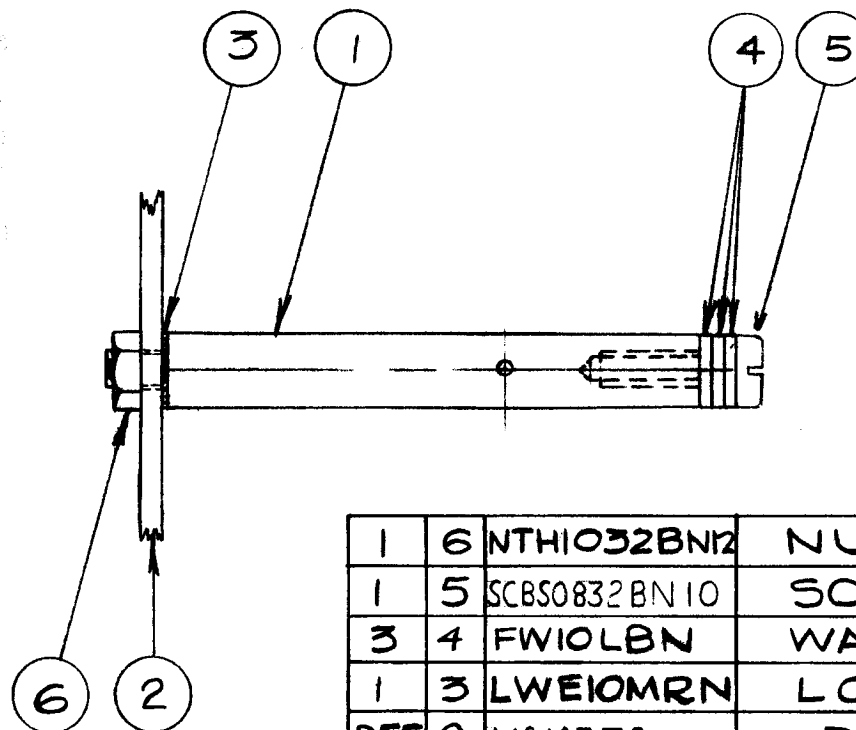
A10240
A10241
A10242

NOTICE TO PERSONS RECEIVING THIS DRAWING

THE TECHNICAL MATERIEL CORPORATION claims proprietary right in the material disclosed herein. This drawing is issued in confidence and is for information only and may not be used or reproduced to manufacture any like shown herein without the permission from THE TECHNICAL MATERIEL CORPORATION to the user. This drawing is loaned for your assistance and is subject to recall at any time.

Property of:

THE TECHNICAL MATERIEL CORPORATION
MAMARONECK, NEW YORK



1	6	NTH1032BN12	NUT
1	5	SCBS0832BN10	SCREW
3	4	FWIOLBN	WASHER
1	3	LWEIOMRN	LOCK WASHER
REF	2	MS10378	PLATE
REF	1	PM10062	GROUND POST

REQ.	ITEM	PART NO.	DESCRIPTION	SYMBOL
			TMC (Canada) LIMITED OTTAWA ONTARIO	
STOCK SIZE			ASS'Y OF GROUND POST	
MATERIAL		WEIGHT PER PC.	JPC	
TYPE & TEMPER			DRAWN: DCM ELEC. DES. APP. MECH. DES. APP.	
HEAT TREAT. SPEC.			CHECKED: DCM FINAL APPROVAL: [Signature]	
FINISH & SPEC. NO.			A10238 A	

A	2	ITEM ② WAS MS-10239	8/2/61	5459	L. E.	RU	SEM
	1	ITEM ③ WAS SCRS0832BN10					
ISSUE	ITEM	CHAN ED FROM	DATE	CN. NO.	DRAFTS	CHECKER	ENG. APP.

TOLERANCES			SCALE 1:1				
ALL OTHERS	DEC. DIM. ± FRAC. DIM. ± 1/64 ANGULAR DIM. ±		DRILL, PUNCH, COMMERCIAL STOCK SIZES AND MANUFACTURERS TOLERANCES ARE NOT INCLUDED.				

IF IT IS FOUND DESIRABLE TO CHANGE ANY TOLERANCE OR OTHER DETAIL SPECIFIED ON THIS DRAWING NOTIFY THE PURCHASER PROMPTLY.

A10243

MAXIMUM ALLOWABLE TOLERANCES HAVE BEEN DETERMINED AND DEVIATIONS WILL BE CAUSE FOR REJECTION. REMOVE ALL BURRS AND SHARP EDGES

USED ON

MODEL

PROJECT NO.

ASS'Y. NO.

DATE

FFR CANI-B

NOV 25
1959

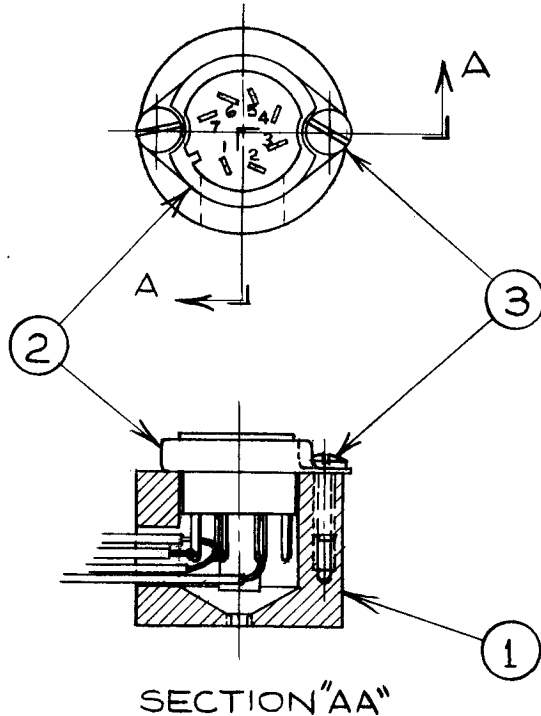
PIN CONNECTIONS

PIN 7 - XTAL, WH/BLU (ITEM 4)

PIN 1 - " , WH/GR (ITEM 5)

PINS 2 & 6 - HEATERS, BROWN (ITEMS 6 & 7)

PIN 4 - GROUND, -BLACK (ITEM 8)



REQ.	ITEM	PART NO.	DESCRIPTION	SYMBOL
	12"	8 LWC22(7)J0	WIRE-INSULATED BLACK	
	12"	7 — " — 1	— " — BROWN	
	12"	6 — " — 1	— " — BROWN	
	12"	5 — " — 95	— " — WH/GR	
	12"	4 — " — 96	— " — WH/BLU	
	2	3 SCB50440BNG	SCREW	
	1	2 TS10006	TUBE SOCKET	
	1	1 PM10063	OVEN MOUNT	

STOCK SIZE		TMC (Canada) LIMITED OTTAWA ONTARIO	
MATERIAL			
WEIGHT PER PC.		FFR. MOD CAN. I-B	
TYPE & TEMPER		DCM	
HEAT TREAT. SPEC.		DRAWN	
FINISH & SPEC. NO.		ELEC. DES. APP.	
		MECH. DES. APP.	
		CHECKED	
		FINAL APPROVAL	
		A10243	

ISSUE	ITEM	CHANGED FROM	DATE	CN. NO.	DRAFTS	CHECKER	ENG. APP.
TOLERANCES				SCALE 1:1			
ALL OTHERS				DRILL, PUNCH, COMMERCIAL STOCK SIZES AND MANUFACTURERS TOLERANCES ARE NOT INCLUDED.			
DEC. DIM. ± —							
FRAC. DIM. ± —							
ANGULAR DIM. ± —							

IF IT IS FOUND DESIRABLE TO CHANGE ANY TOLERANCE OR OTHER DETAIL SPECIFIED ON THIS DRAWING NOTIFY THE PURCHASER PROMPTLY.

A-10266 A

MAXIMUM ALLOWABLE TOLERANCES HAVE BEEN DETERMINED AND DEVIATIONS WILL BE CAUSE FOR REJECTION. REMOVE ALL BURRS AND SHARP EDGES

USED ON

MODEL

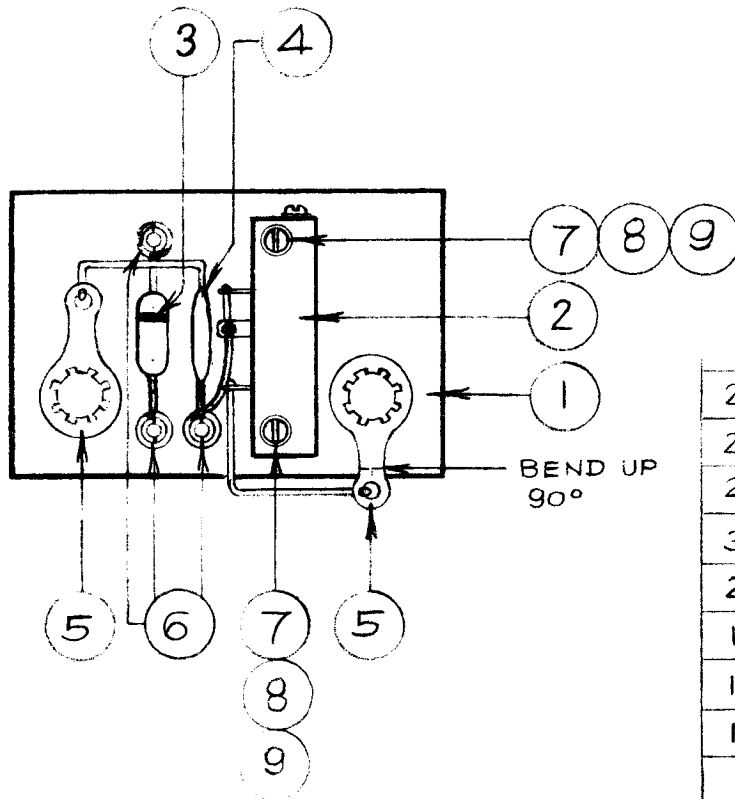
PROJECT NO.

ASS'Y. NO.

DATE

AMC 6/5

MARCH 14/60



NOTE : 1. REVISION "A" IS EFFECTIVE FROM SER. NO. 5301 TO MFG. NO. 30305-25. SUPERSEDES A-10201C.
2. REVISION "A" IS EFFECTIVE FROM MFG. NO. 30352-1 ONWARDS. SUPERSEDES REVISION Ø.

REQ.	ITEM	PART NO.	DESCRIPTION	SYMBOL
2	9	LWI 02MRN	LOCKWASHER	
2	8	NTH0256BN6	NUT	
2	7	SCBS 0256 BN8	SCREW	
3	6	TE 10003-1	TERMINAL	
2	5	TE 104-5	SOLDER LUG	
1	4	CC 10002-1	CAPACITOR	
1	3	IN 252	DIODE	
1	2	RV-10002-3	POTENTIOMETER 50K	
1	1	PP-10074	MOUNTING BOARD	

TMC (Canada) LIMITED
OTTAWA ONTARIO

ASSEMBLY,
METER PANEL

MK

DRAWN

ELEC. DES. APP.

MECH. DES. APP.

CHECKED

FINAL APPROVAL

A-10266

A

A	REV. IT 4,5 & 6 PICT. IT 3 WAS IN 478. REV. NOTE	12-15-44	17487	RME	<i>JS</i>	<i>MA</i>	
ISSUE	ITEM	CHANGED FROM	DATE	CN. NO.	DRAFTS	CHECKER	ENG. APP.

TOLERANCES		SCALE 1:1
ALL OTHERS	DEC. DIM. ± — FRAC. DIM. ± — ANGULAR DIM. ± —	DIMENSIONS IN INCHES UNLESS OTHERWISE SPECIFIED DRILL, PUNCH, COMMERCIAL STOCK SIZES AND MANUFACTURERS TOLERANCES ARE NOT INCLUDED.

STOCK SIZE		MATERIAL		WEIGHT PER PC.	
TYPE & TEMPER		HEAT TREAT. SPEC.		FINISH & SPEC. NO.	

IF IT IS FOUND DESIRABLE TO CHANGE ANY TOLERANCE OR OTHER DETAIL SPECIFIED ON THIS DRAWING NOTIFY THE PURCHASER PROMPTLY.

A-10282

MAXIMUM ALLOWABLE TOLERANCES HAVE BEEN DETERMINED AND DEVIATIONS WILL BE CAUSE FOR REJECTION. REMOVE ALL BURRS AND SHARP EDGES

USED ON

MODEL

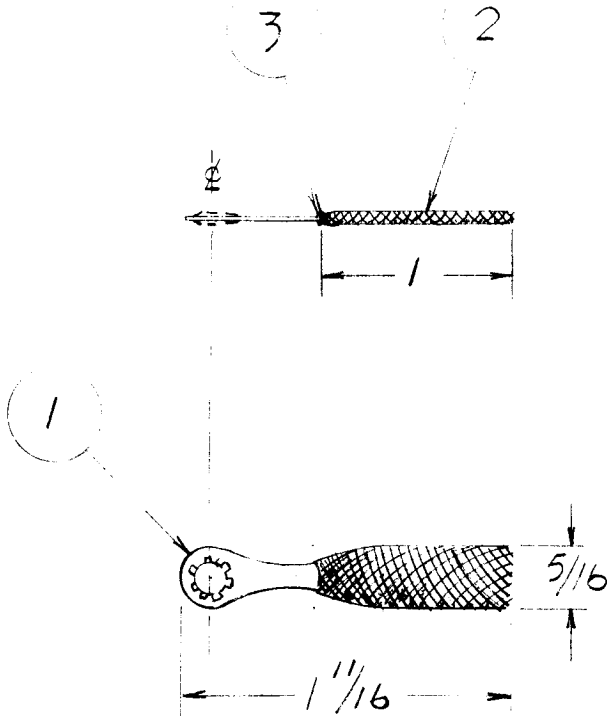
PROJECT NO.

ASS'Y. NO.

DATE

CATU-1K. CE-5008

15-JUN-60



NOTE:

IT IS ESSENTIAL THAT SOLDER IS NOT PERMITTED TO RUN DOWN BRAID AS LOSS OF FLEXIBILITY WOULD RESULT.

A/R 3	—	SOLDER
1 2	WL-103-3	BRAID-COPPER-TINNED
1 1	TE-104-2	TERMINAL-LOCKING

REQ.	ITEM	PART NO.	DESCRIPTION	SYMBOL
STOCK SIZE			TMC(Canada)LIMITED OTTAWA ONTARIO CONNECTOR-FLEXIBLE ASS'Y.	
MATERIAL				
WEIGHT PER PC.			WH DAVISON	
TYPE & TEMPER			DRAWN	
HEAT TREAT. SPEC.			ELEC. DES. APP.	
FINISH & SPEC. NO.			MECH. DES. APP.	
			CHECKED	
			FINAL APPROVAL	
			A-10282	

ISSUE	ITEM	CHANGED FROM	DATE	CN. NO.	DRAFTS	CHECKER	ENG. APP.
TOLERANCES				SCALE 1:1			
ALL OTHERS				DIMENSIONS IN INCHES UNLESS OTHERWISE SPECIFIED			
DEC. DIM. ±				DRILL. PUNCH. COMMERCIAL STOCK SIZES AND MANUFACTURERS TOLERANCES ARE NOT INCLUDED.			
FRAC. DIM. ±							
ANGULAR DIM. ±							

IF IT IS FOUND DESIRABLE TO CHANGE ANY TOLERANCE OR OTHER DETAIL SPECIFIED ON THIS DRAWING NOTIFY THE PURCHASER PROMPTLY.

A10295 A

MAXIMUM ALLOWABLE TOLERANCES HAVE BEEN DETERMINED AND DEVIATIONS WILL BE CAUSE FOR REJECTION. REMOVE ALL BURRS AND SHARP EDGES

USED ON

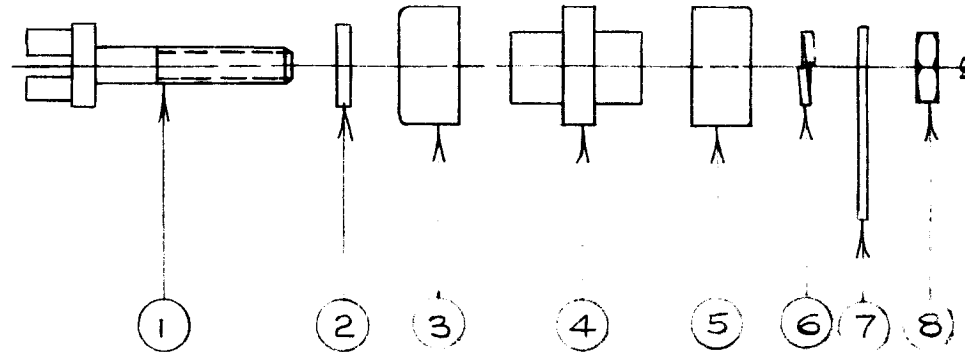
MODEL

PROJECT NO.

ASS'Y. NO.

DATE

11/14/60



1	8	NTH0440BNG	NUT
1	7	TE113-.120	SOLDER LUG
1	6	LWS04MRR	WASHER SPLIT (OR MRN)
1	5		CUP, UPPER
1	4		SEAL NEOPRENE
1	3		CUP, LOWER
1	2		WASHER NEOPRENE.
1	1		STUD

REQ.	ITEM	PART NO.	DESCRIPTION	SYMBOL
			TMC (Canada) LIMITED OTTAWA ONTARIO	
			ASS'Y OF TE101-1&2	
		STOCK SIZE		
		MATERIAL	WEIGHT PER PC.	
		TYPE & TEMPER	JPC	
		HEAT TREAT. SPEC.		
		FINISH & SPEC. NO.		

A	DELETED PT. NO. FROM 1 TO 5 TE101-1&2 WAS TE101-2		JAN. 5 1961	JPC			
ISSUE	ITEM	CHANGED FROM	DATE	CN. NO.	DRAFTS	CHECKER	ENG. APP.
TOLERANCES			SCALE 2:1				
ALL OTHERS	DEC. DIM. ±		DIMENSIONS IN INCHES UNLESS OTHERWISE SPECIFIED				
	FRAC. DIM. ±		DRILL, PUNCH, COMMERCIAL STOCK SIZES AND MANUFACTURERS TOLERANCES ARE NOT INCLUDED.				
	ANGULAR DIM. ±						

A10295 A