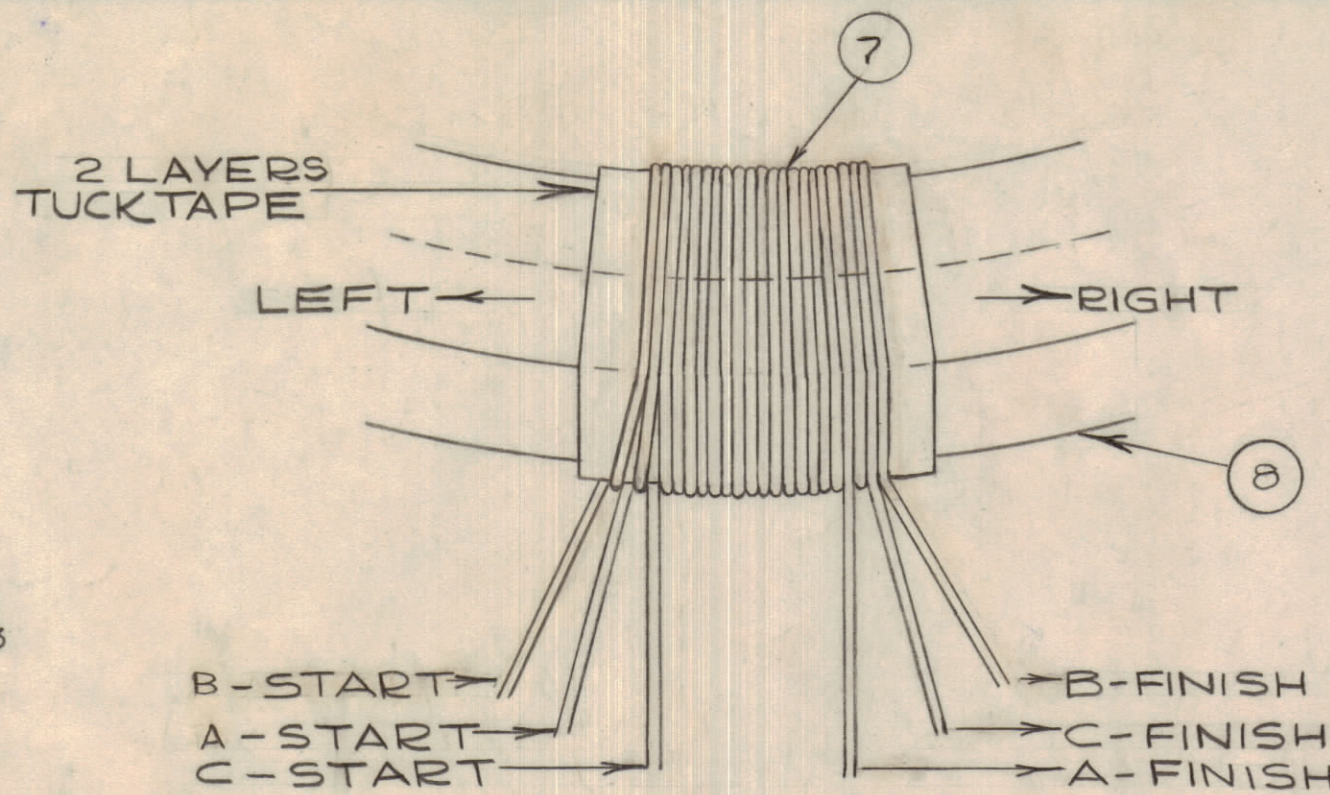
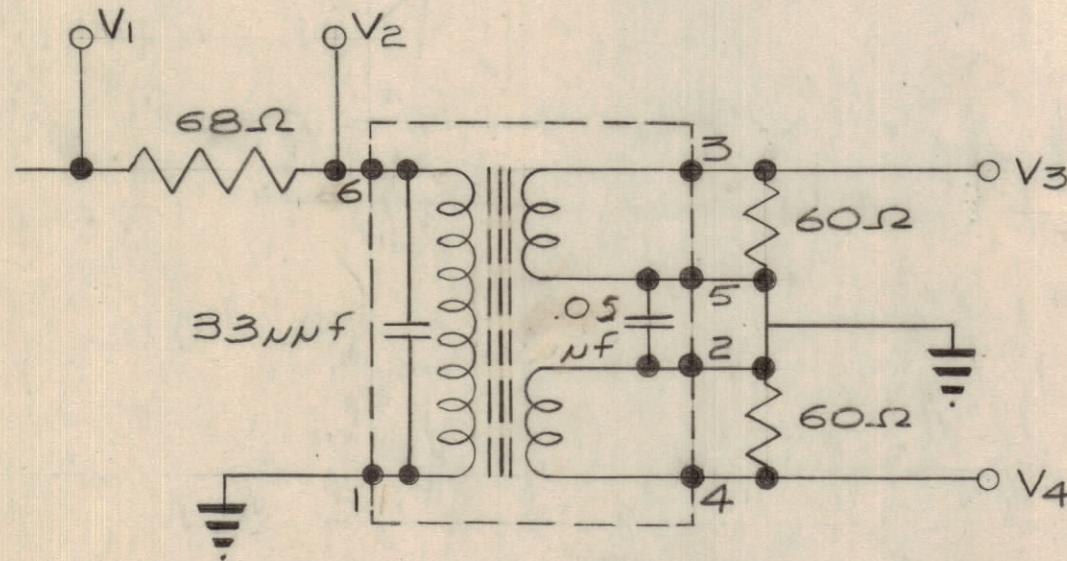


IF IT IS FOUND DESIRABLE TO CHANGE ANY TOLERANCE OR OTHER DETAIL SPECIFIED ON THIS DRAWING NOTIFY THE PURCHASER PROMPTLY.

MAXIMUM ALLOWABLE TOLERANCES HAVE BEEN DETERMINED AND DEVIATIONS WILL BE CAUSE FOR REJECTION. REMOVE ALL BURRS AND SHARP EDGES

TOP SECURITY

TEST SCHEMATIC

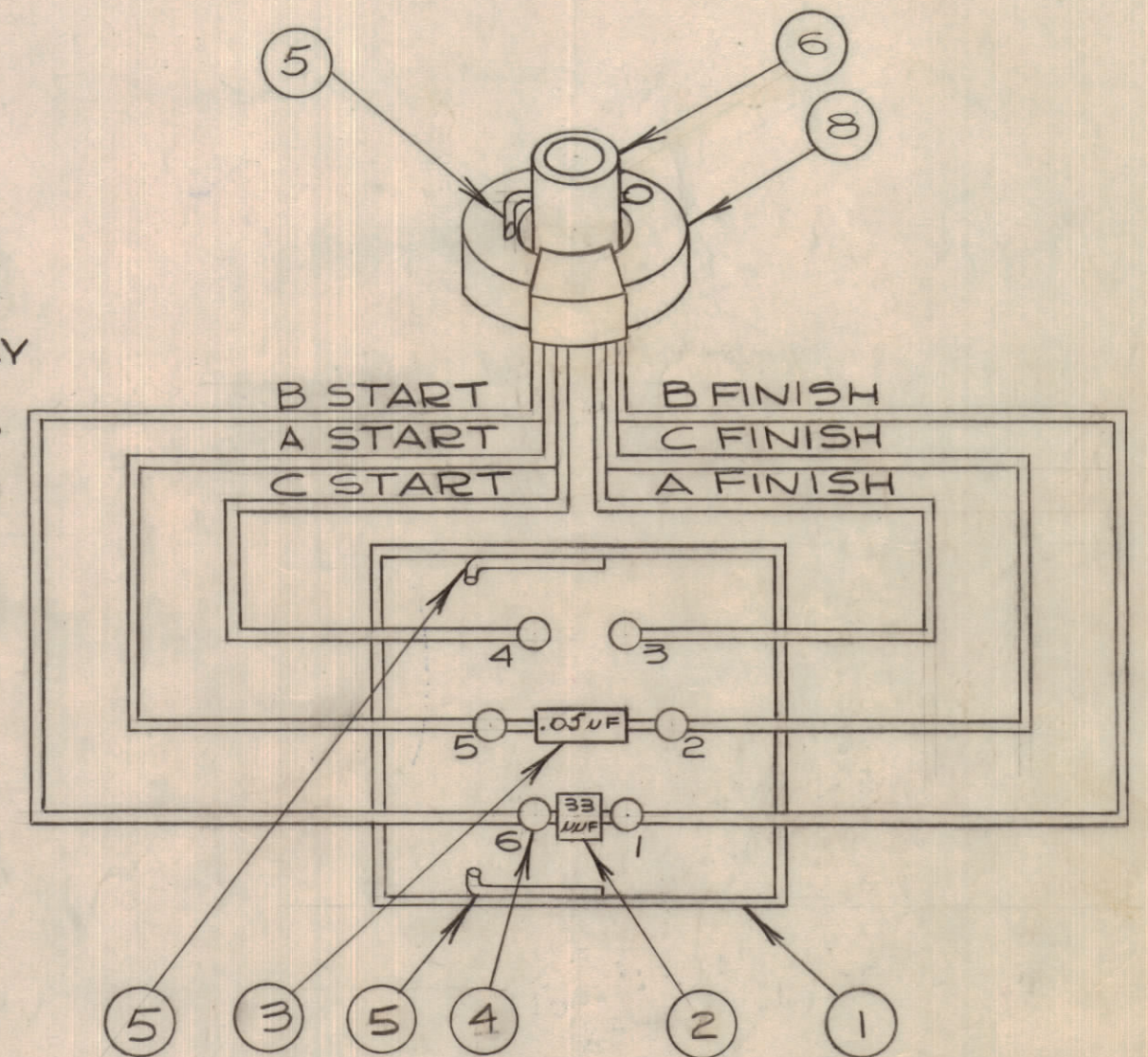


WINDING DATA

- TWO LAYERS OF MASKING TAPE ON CORE.
- LAY THREE CONDUCTORS ON TOP OF CORE AND SECURE.
- WIND THREE CONDUCTORS SIMULTANEOUSLY 6-3/4 TURNS ANTICLOCKWISE TO THE RIGHT FINISHING AT BACK OF CORE. SECURE, APPLY RADIO CEMENT AND ALLOW TO DRY.
- PULL BACK THREE CONDUCTORS AT FINISH OF WINDING TO BOTTOM FRONT EDGE OF CORE. CONTINUE CENTRE CONDUCTOR ONLY, ADDITIONAL 1-1/4 TURNS TO THE RIGHT ENDING AT BACK OF THE CORE. SECURE CONDUCTOR, APPLY RADIO CEMENT AND ALLOW TO DRY.
- PULL BACK CONDUCTOR AT FINISH OF WINDING TO BOTTOM FRONT EDGE OF THE CORE. FINISH END OF WINDING IS NOW COMPLETED.
- PULL BACK THREE CONDUCTORS AT START OF WINDING TO BOTTOM FRONT EDGE OF THE CORE. TAKE CENTRE CONDUCTOR ONLY AND CONTINUE TO WIND IT 2-1/2 TURNS CLOCKWISE TO THE LEFT, FINISHING AT FRONT OF CORE. SECURE CONDUCTOR, APPLY RADIO CEMENT AND ALLOW TO DRY.
- PULL BACK CONDUCTOR AT START OF WINDING TO BOTTOM FRONT EDGE OF THE CORE. WINDING IS NOW COMPLETE.

TEST LIMITS

FREQ MC/S.	V1	V2	V3 AND V4
2	1.0	.5+03-.02	>.305
28.0	-1.0	.5+-.03 -.02	>.305
8			
16			
20			
24			
28			
30		5.04-.02	
MAXIMUM DIFFERENCE V3V4 .005			



A10200 E

E	1	IT.2 WAS CC10003-3	11.23.60	15201	R.V.V.		
D	1	ADDED ITEMS 9 & 10	3-7-64	10958	AM.		
C		TEST DATA 28 Mc/s ADDED. IN BOM. CC10007 WAS CC10002-1 E QTY 1 WAS 4 ITEM (8) CI-10001-2 WAS CI-10001 BALOON 7 ADDED TO F.O.D. .05uf WAS .04 uf TEST LIMITS AMENDED	29	AUG	1960	W.H.D	
B		DATA CHANGED	4/4/60		M.K.		
A		REDRAWN					

NOTICE TO PERSONS RECEIVING THIS DRAWING

THE TECHNICAL MATERIEL CORPORATION claims proprietary right in the material disclosed hereon. This drawing is issued in confidence for engineering information only and may not be reproduced or used to manufacture anything shown hereon without permission from THE TECHNICAL MATERIEL CORPORATION to the user. This drawing is loaned for mutual assistance and is subject to recall at any time.

Property of:

THE TECHNICAL MATERIEL CORPORATION
MAMARONECK, NEW YORK

NOT TO BE RELEASED
W/O AUTHORIZATION
AUTH. BY: _____
DATE: _____

REQ.	ITEM	PART NO.	DESCRIPTION	SYMBOL
AR 10	S-10074		ARALDITE, HOT POTTING	
AR 9	GL-10003		ARALDITE, HOT POTTING	
1	8 CI 10001-2		CORE	
AR 7	WI10002-2		WIRE	
1	6 CF10012		MANDREL	
2	5 MS10259		STABILIZER	
6	4 TE101-1		FEED-THRU	
1	3 CC10007		CAPACITOR	
1	2 CC215L330G		CAPACITOR	
1	1 MS10290		CAN	

STOCK SIZE		TMC (Canada) LIMITED OTTAWA ONTARIO	
MATERIAL		TPO-73	
TYPE & TEMPER		JPC	
HEAT TREAT. SPEC.		WCM	
FINISH & SPEC. No.			

AMC 6-5 CE646 A10219 JAN 15/60

MODEL	PROJECT No.	ASS'Y. No.	DATE