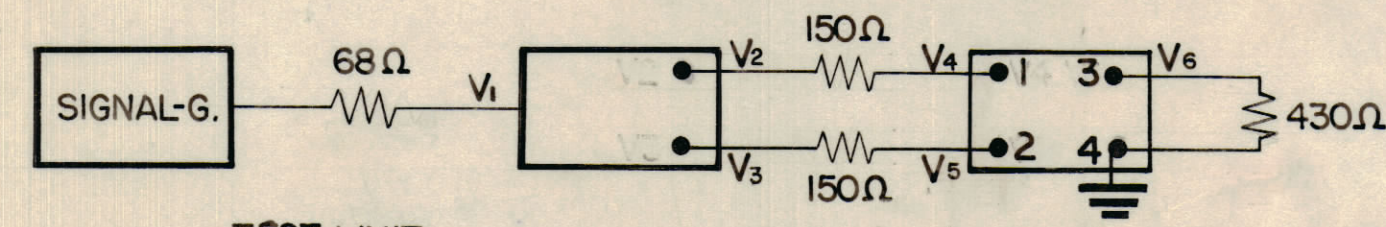
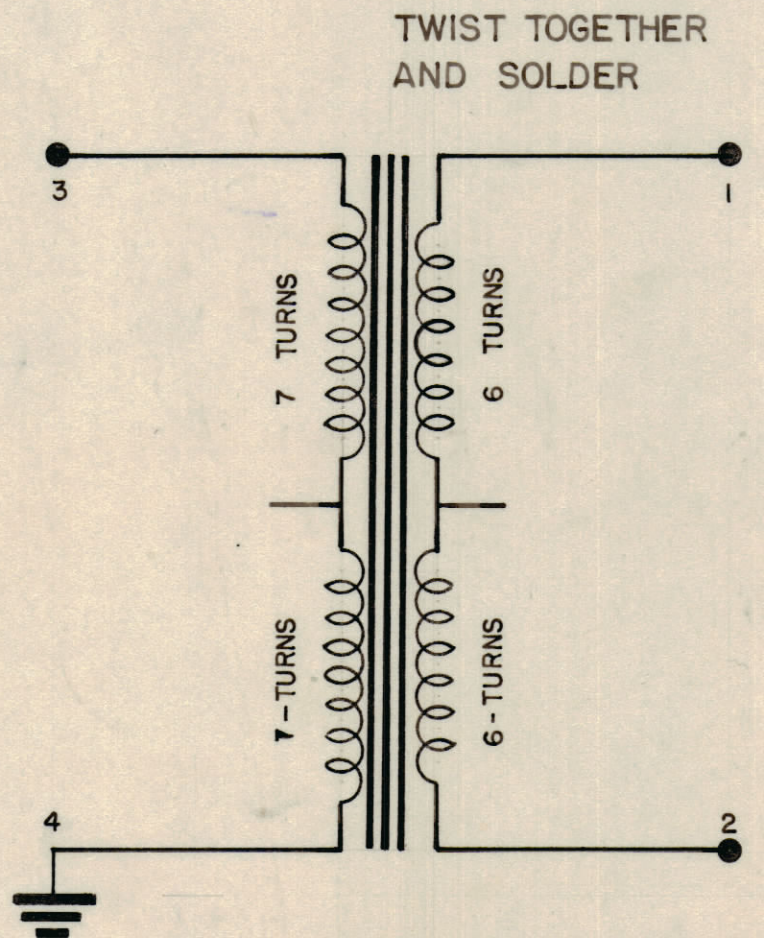
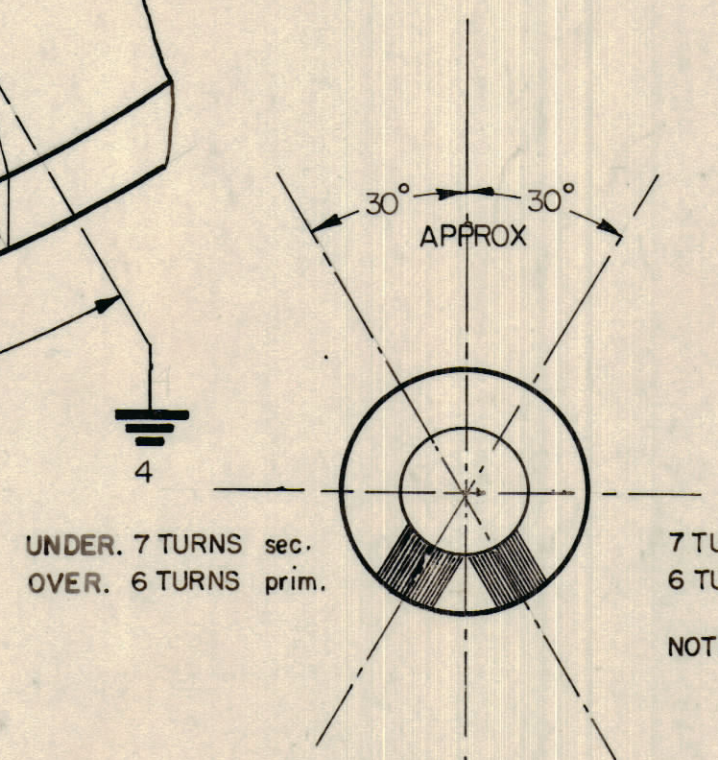
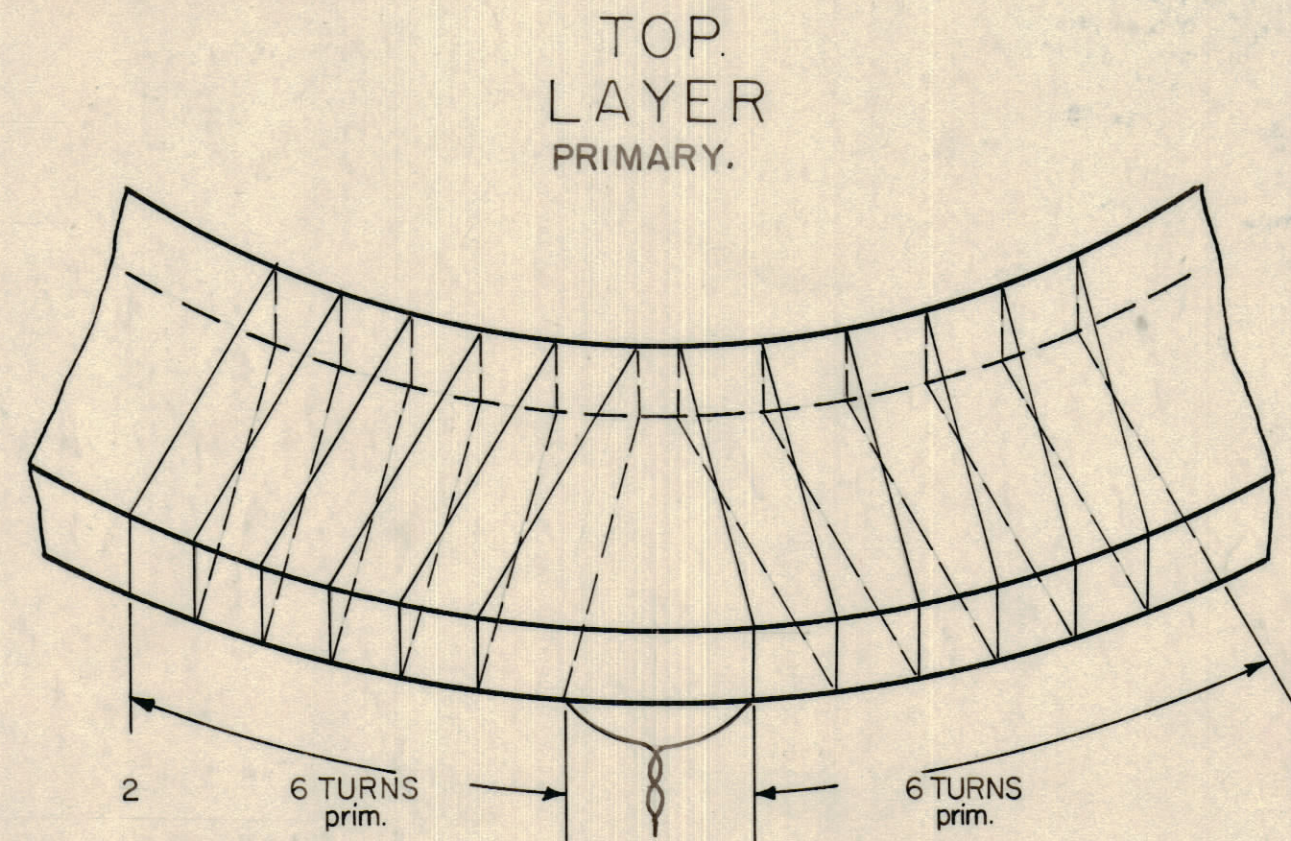
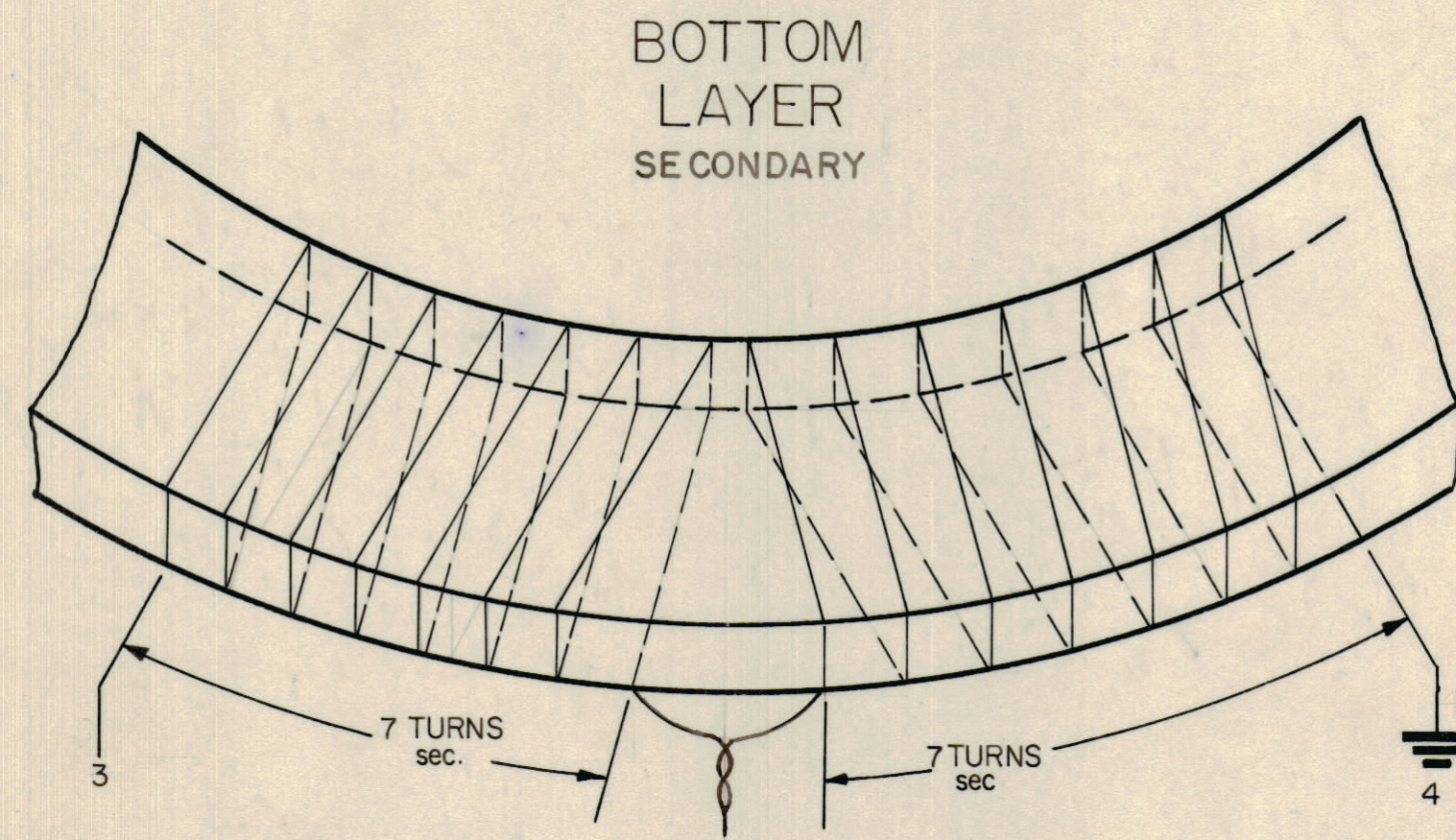


IF IT IS FOUND DESIRABLE TO CHANGE ANY TOLERANCE OR OTHER DETAIL SPECIFIED ON THIS DRAWING NOTIFY THE PURCHASER PROMPTLY.

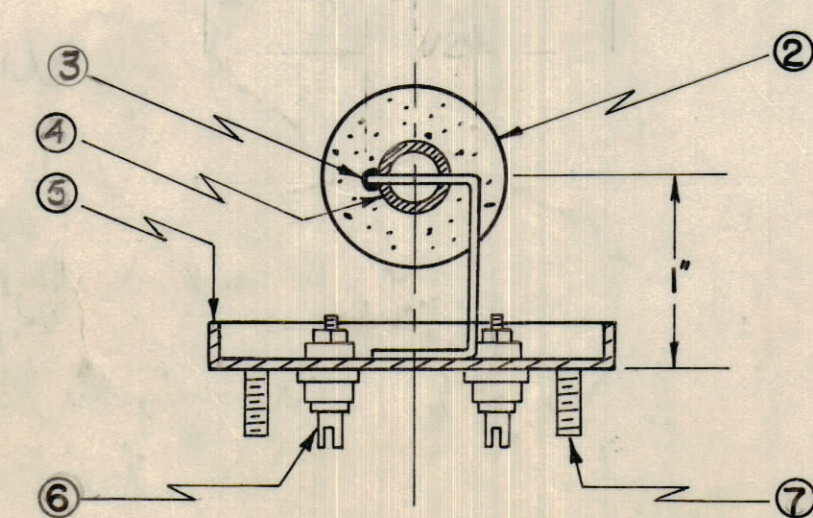
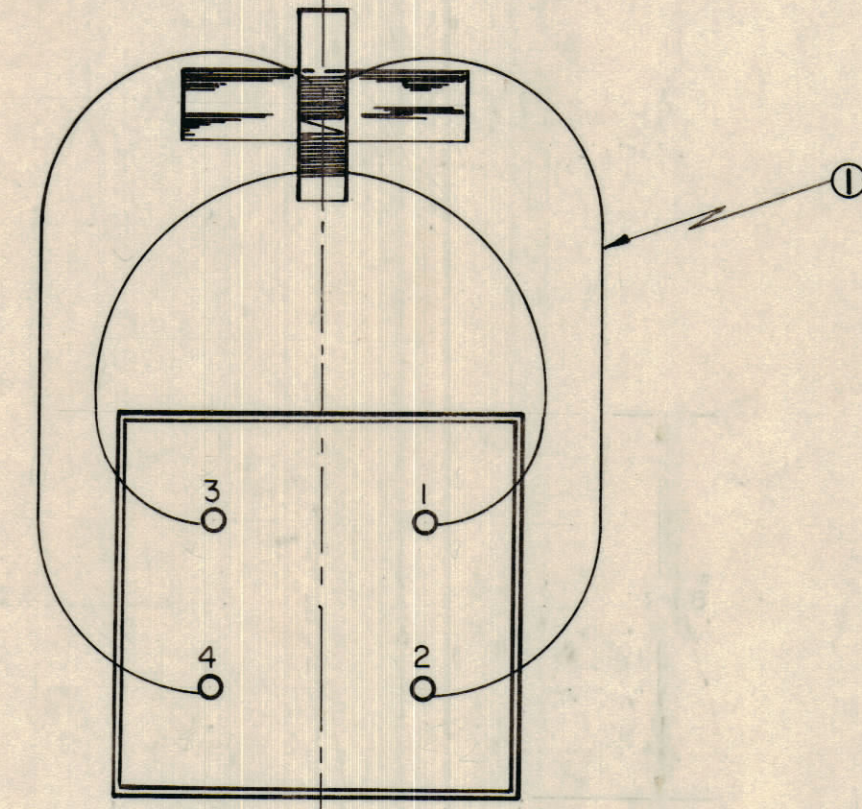
MAXIMUM ALLOWABLE TOLERANCES HAVE BEEN DETERMINED AND DEVIATIONS WILL BE CAUSE FOR REJECTION. REMOVE ALL BURRS AND SHARP EDGES

Confidential



TEST LIMIT
 $V_2 = V_3 = 0.5V \pm .05$
 $V_4 = V_5 = 0.20V \pm .05$
 $V_6 = 0.6 \pm .01$

TEST DATA:



NOT TO BE RELEASED
 W/O AUTHORIZATION
 AUTH. BY: _____
 DATE: _____

NOTE:

AMC 6-3/6-2 — 300ohm balanced 430ohm unbalanced
 PRIMARY = 6 turns + 6 turns WIRE 30 DCC
 SECONDARY 7 " + 7 " " " "

WINDING PHILOSOPHY.

- 1, WIND IN TWO SECTIONS SECONDARY LAYER 7T.+7T. ON CORE IN SAME DIRECTION
- 2, TWO LAYERS TAPE
- 3, PRIMARY LAYER WIND IN SAME DIRECTION. 6T.+6T.
- 4, AFTER WINDING AND MOUNTING TRANSFORMER TO BE HEAVILY COATED WITH RADIO CEMENT

REQ.	ITEM	PART NO.	DESCRIPTION	SYMBOL
4	7	SC-1000 1	STUD	
4	6	TE-101-1	TERMINALS.	
1	5	BX-105	CAN BOTTOM	
1	4	CF-10012	COIL FORM	
1	3	MS-10259	STABILISER WIRE	
1	2	CI-10001-3	CORE GRADE NO 3/C	
1	1	WI-10007	WIRE No. 30 SINGLE POLY., SINGLE NYLON	

STOCK SIZE		TMC (Canada) LIMITED OTTAWA ONTARIO	
MATERIAL		TRANSFORMER TRO76	
WEIGHT PER PC.		300Ω balanced 430Ω unbalanced	
TYPE & TEMPER		 DRAWN	 ELEC. DES. APP.
HEAT TREAT. SPEC.		 MED. DES. APP.	
FINISH & SPEC. NO.		CHECKED	FINAL APPROVAL

ISSUE	ITEM	CHANGED FROM	DATE	CN. NO.	DRAFTS	CHECKER	ENG. APP.
A	1	B.O.M. AMENDED SCHEMATIC ALTERED PROJ. NO DELETED MOD No ADDED	9 SEPT 1960			WHD LMS RWS	

TOLERANCES		SCALE:
ALL OTHERS	DEC. DIM. ± FRAC. DIM. ± ANGULAR DIM. ±	DRILL, PUNCH, COMMERCIAL STOCK SIZES AND MANUFACTURERS TOLERANCES ARE NOT INCLUDED.

MODEL	PROJECT NO.	ASS'Y. No.	DATE
AMC-6-3/6-2			Aug. 29. 58

A A-10 164.