

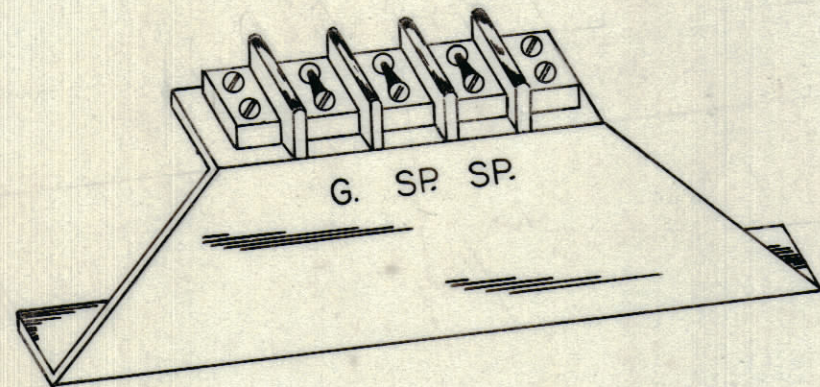
IF IT IS FOUND DESIRABLE TO CHANGE ANY TOLERANCE OR OTHER DETAIL SPECIFIED ON THIS DRAWING NOTIFY THE PURCHASER PROMPTLY.

MAXIMUM ALLOWABLE TOLERANCES HAVE BEEN DETERMINED AND DEVIATIONS WILL BE CAUSE FOR REJECTION. REMOVE ALL BURRS AND SHARP EDGES

NOTICE TO PERSONS RECEIVING THIS DRAWING

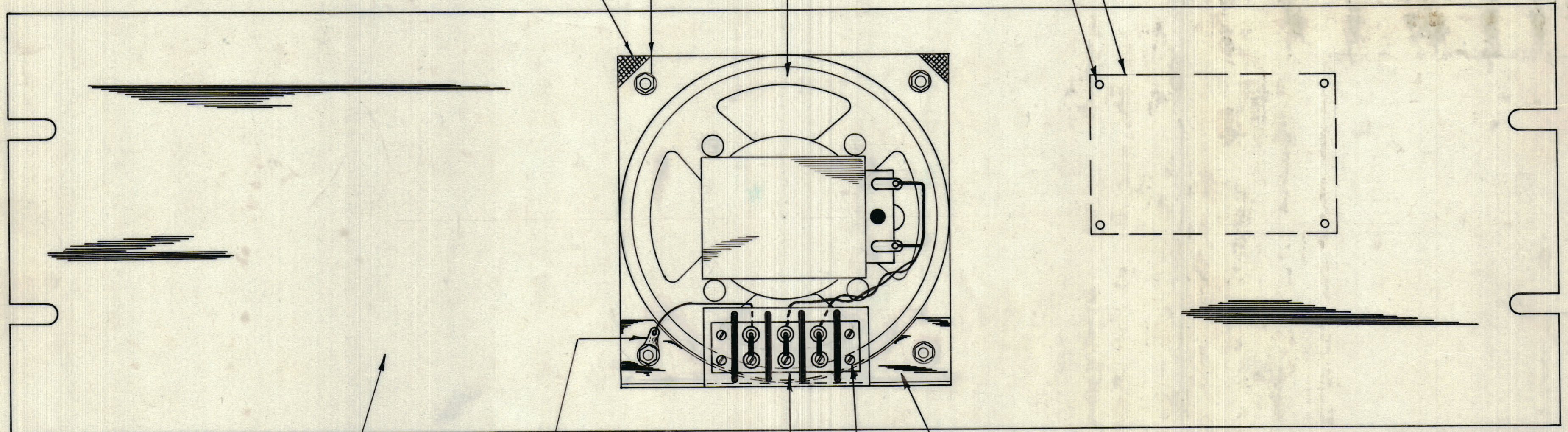
THE TECHNICAL MATERIEL CORPORATION claims proprietary right in the material disclosed hereon. This drawing is issued in confidence for engineering information only and may not be reproduced or used to manufacture anything shown hereon without permission from THE TECHNICAL MATERIEL CORPORATION to the user. This drawing is loaned for mutual assistance and is subject to recall at any time.

Property of:
THE TECHNICAL MATERIEL CORPORATION
MAMARONECK, NEW YORK



TERMINAL BOARD MOUNTING
BRACKETED DRNG. NO MS10 217

8	16	FW-08MRN	FLAT WASHER
1	15	TE-104	TERMINAL LUG
1	14	SN-10 002	WIRE MESH SCREEN
1	13		BRACKETED FOR T.B. MOUNTING
1	12	MS-157-3	PANEL 19"x 5-1/4" x 3/16"



A-10160

1	11		GASKET (SPEAKER)
1	10	LS-101	LOUD SPEAKER
4	9	SC-102-1	SELF TAPING SCREWS 2-56
4	8	LWS08MRC	SPRING WASHER 8-32
4	7	NTH0832 BC	NUTS 8-32
4	6	SCS0832 BC	SCREWS 8-32
4	5	LWS0632 BC	SPRING WASHER
4	4	NTH0632 BC	NUTS 6-32
4	3	SCS0632 BC	SCREWS 6-32
1	2	TM-100-3	TERMINAL BOARD
1	1	NP-10001	NAMEPLATE LSP-4.

NOTE TWO FLAT WASHERS AT EACH CORNER TO BE MOUNTED IN BETWEEN LOUDSPEAKER AND SCREEN. TO PROVIDE CORNER OF SPEAKER FROM BENDING.
NO. OF WASHER - FW 08MRN

ISSUE	ITEM	CHANGED FROM	DATE	CN. NO.	DRAFTS	CHECKER	ENG. APP.
TOLERANCES							
SCALE: 1-1"							
DRILL, PUNCH, COMMERCIAL STOCK SIZES AND MANUFACTURERS TOLERANCES ARE NOT INCLUDED.							

LSP-4.

MODEL	PROJECT No.	ASS'Y. No.	DATE
			June 6, 58

REQ.	ITEM	PART No.	DESCRIPTION	SYMBOL
TMC (Canada) LIMITED OTTAWA ONTARIO				
REAR VIEW OF LOUD-SPEAKER LSP-4				
DRAWN		ELEC. DES. APP.		
CHECKED		MECH. DES. APP.		
FINAL APPROVAL				
A-10160				