

IF IT IS FOUND DESIRABLE TO CHANGE ANY TOLERANCE OR OTHER DETAIL SPECIFIED ON THIS DRAWING NOTIFY THE PURCHASER PROMPTLY.

MAXIMUM ALLOWABLE TOLERANCES HAVE BEEN DETERMINED AND DEVIATIONS WILL BE CAUSE FOR REJECTION. REMOVE ALL BURRS AND SHARP EDGES

**NOT TO BE RELEASED
W/O AUTHORIZATION**

AUTH. BY _____

DATE: _____

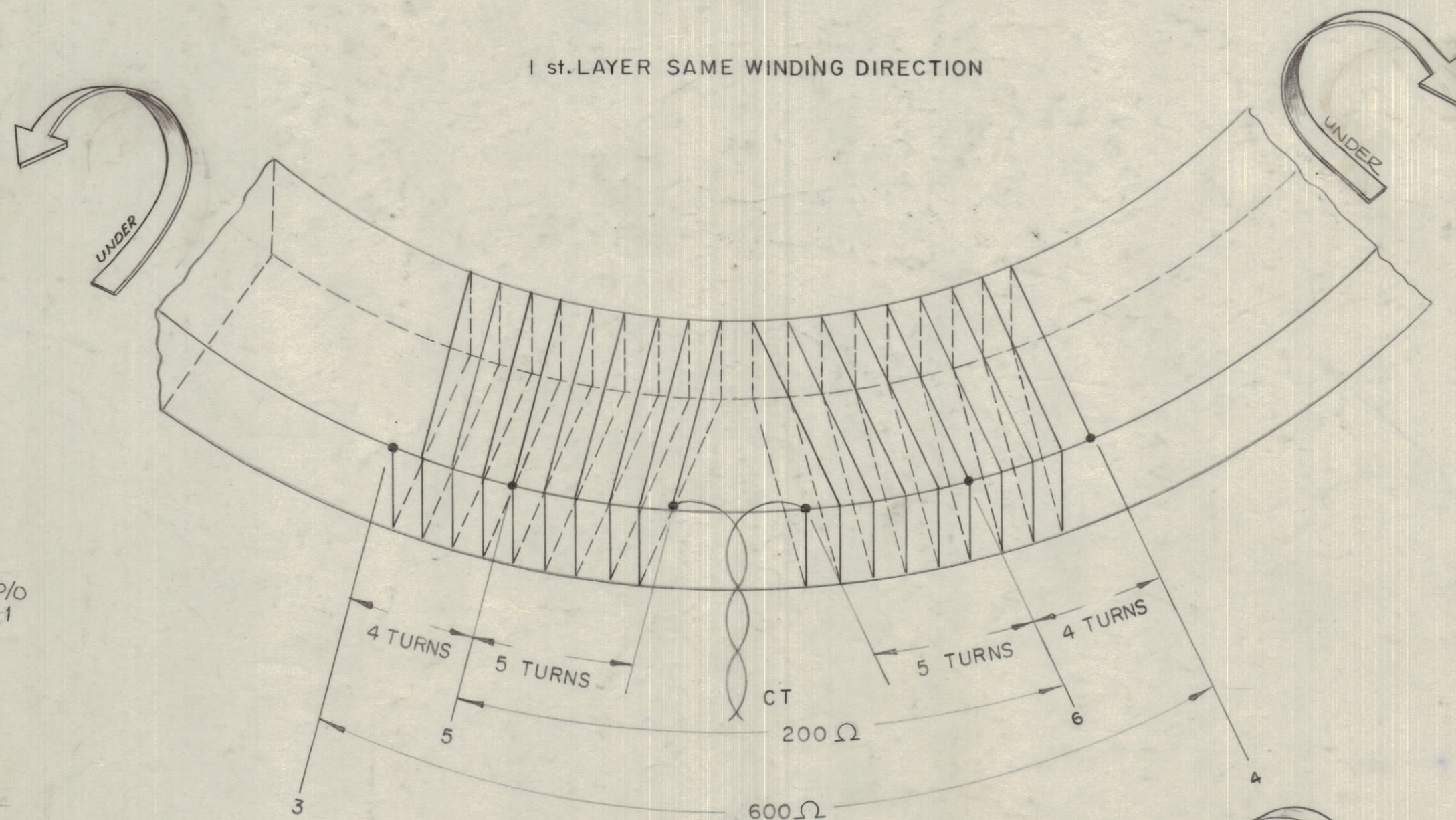
NOTICE TO PERSONS RECEIVING THIS DRAWING

THE TECHNICAL MATERIEL CORPORATION claims proprietary right in the material disclosed hereon. This drawing is issued in confidence for engineering information only and may not be reproduced or used to manufacture anything shown hereon without permission from THE TECHNICAL MATERIEL CORPORATION to the user. This drawing is loaned for mutual assistance and is subject to recall at any time.

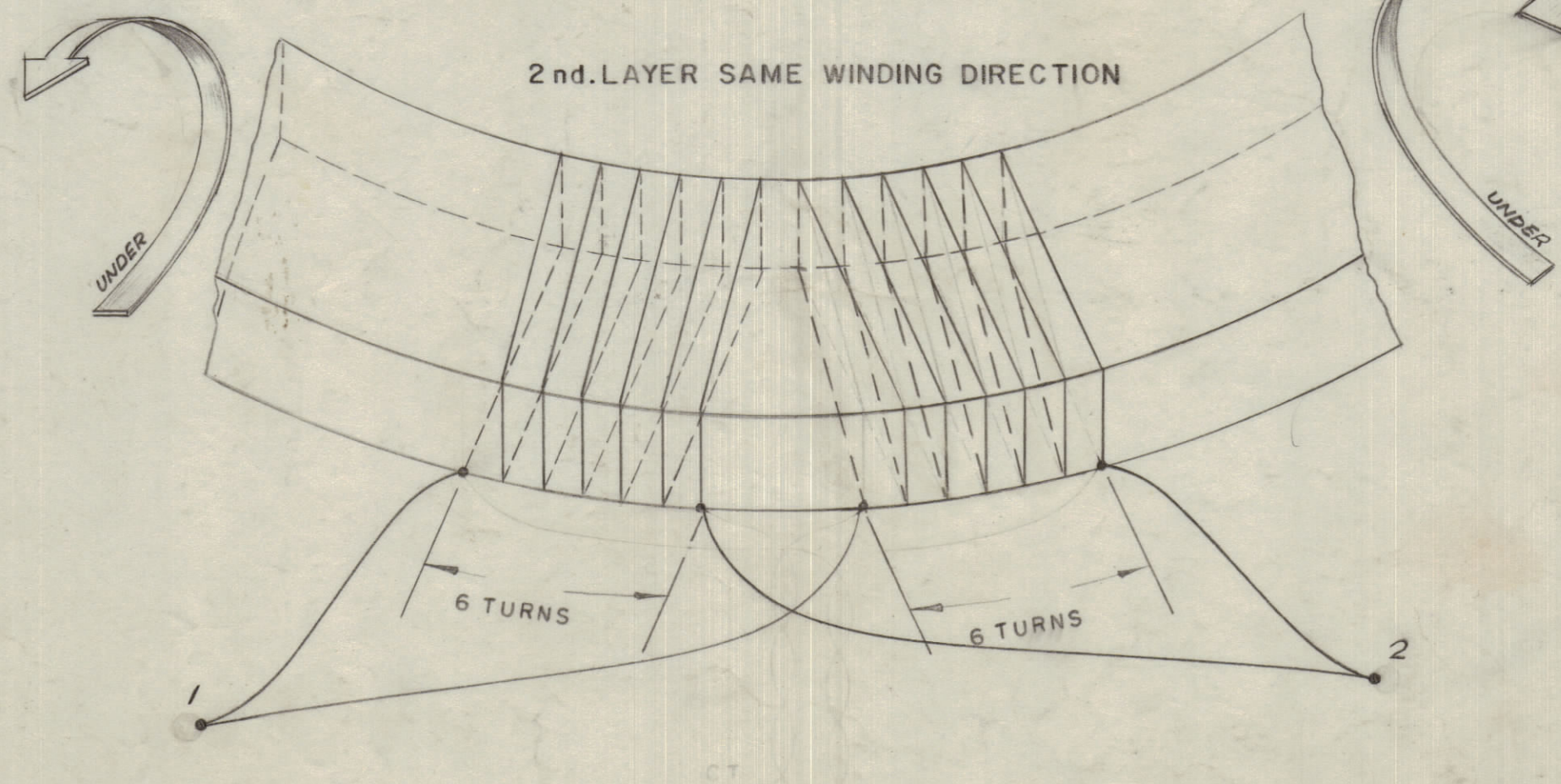
Property of:

THE TECHNICAL MATERIEL CORPORATION
MAMARONECK, NEW YORK

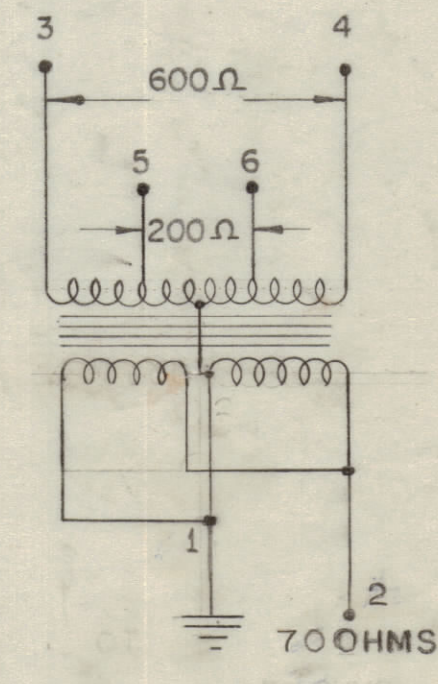
1 st. LAYER SAME WINDING DIRECTION



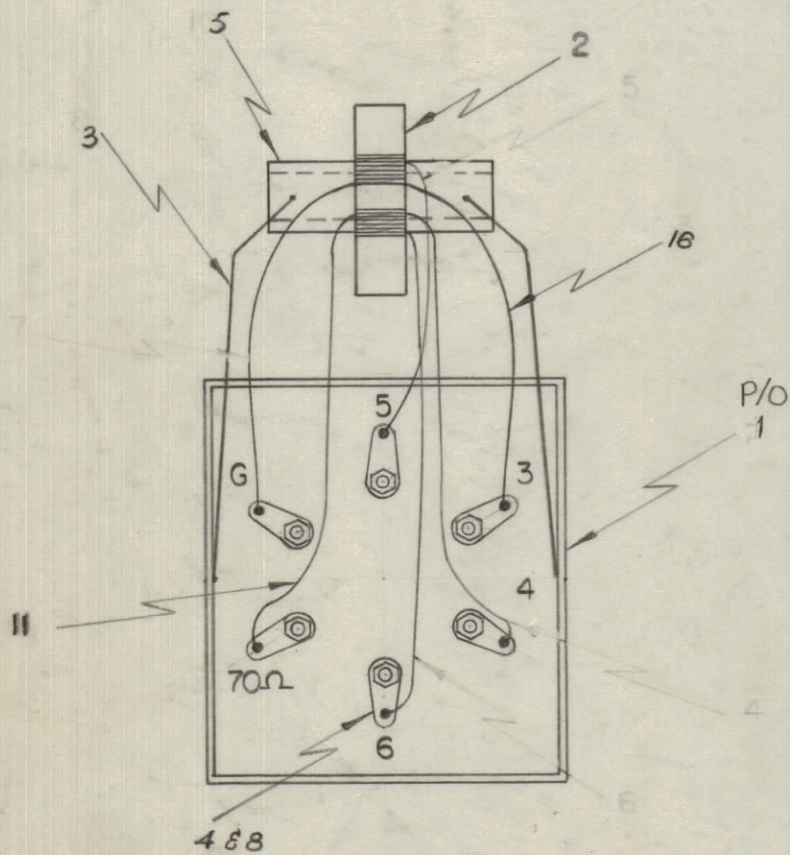
2 nd. LAYER SAME WINDING DIRECTION



70Ω WINDING UPPER LAYER



A-10112 C



NOTE

- A) 1 LAYER OF SILICON TAPE IN BETWEEN WINDING LAYERS
- B) WIRE SIZE IS N° 30 DCC
- C) CORE TYPE IS 3C
- D) CT OF UPPER AND LOWER LAYER CONNECT TO TERMINAL #1- GROUND
- E) ALL OVER LENGTH OF COIL WIRE 1/2" 30 DCC FOR UPPER AND LOWER WINDING

C	ITEM 1 WAS BX100-8X	1/11/55	21314	CL		
B	ITEM 9 ADDED	12-14-61	6060	R.S.		
A	WINDING PHILOSOPHY OF 70Ω LAYER CHANGED. B.O.M. REVISED.	MAY 5 1961		JPC	J.S.	R.L.B.
ISSUE	ITEM	CHANGED FROM	DATE	CN. NO.	DRAFTS	CHECKER
						ENG. APP.

TOLERANCES		SCALE:
ALL OTHERS	DEC. DIM. ± FRAC. DIM. ± ANGULAR DIM. ±	DRILL, PUNCH, COMMERCIAL STOCK SIZES AND MANUFACTURERS TOLERANCES ARE NOT INCLUDED.

REQ.	ITEM	PART NO.	DESCRIPTION	SYMBOL
X	9	GL-120-126	POTTING COMPOUND(100GRMS)	
1	8	TE-101-1	FEED THOUGH CERAMIC	
1	7	P/O ITEM 1	WINDING TERMINATION	
1	6	WI-10007	COIL WIRE N° 30 DCC	
1	5	CF-10012	COIL FORM	
6	4	TE-110-2	LUG SOLDER WIRE-N° 30 DCC	
2	3	MS-10259	STABILIZER	
1	2	CI-10001-3	CORE GRADE 3C	
1	1	BX-107	CASE + COVER ASSY	
TMC (Canada) LIMITED OTTAWA ONTARIO				
WINDING PHILOSOPHY OF TR-054 TRANSFORMER				
TYPE & TEMPER		M. Parker		
DRAWN		ELEC. DES. APP.	MECH. DES. APP.	
HEAT TREAT. SPEC.		M. Parker		
CHECKED		FINAL APPROVAL		
FINISH & SPEC. NO.		A-10112 C		

TR-054			
MODEL	PROJECT NO.	ASS'Y. NO.	DATE
			12.6.1957
USED ON			