

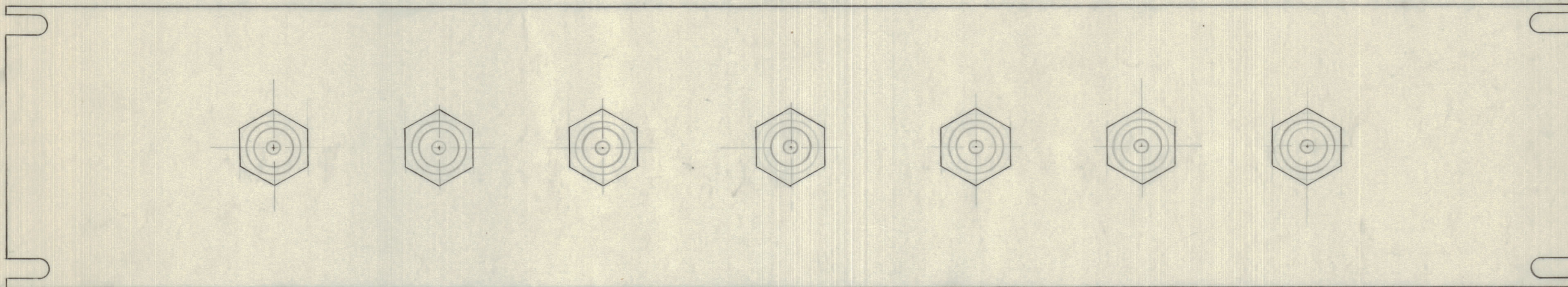
IF IT IS FOUND DESIRABLE TO CHANGE ANY TOLERANCE OR OTHER DETAIL SPECIFIED ON THIS DRAWING NOTIFY THE PURCHASER PROMPTLY.

MAXIMUM ALLOWABLE TOLERANCES HAVE BEEN DETERMINED AND DEVIATIONS WILL BE CAUSE FOR REJECTION. REMOVE ALL BURRS AND SHARP EDGES

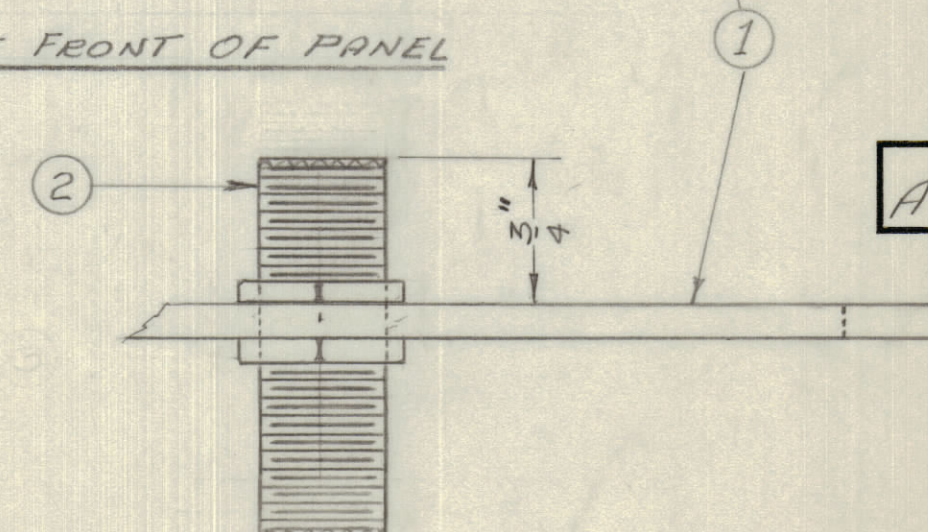
NOTICE TO PERSONS RECEIVING THIS DRAWING

THE TECHNICAL MATERIEL CORPORATION claims proprietary right in the material disclosed hereon. This drawing is issued in confidence for engineering information only and may not be reproduced or used to manufacture anything shown hereon without permission from THE TECHNICAL MATERIEL CORPORATION to the user. This drawing is loaned for mutual assistance and is subject to recall at any time.

Property of:  
THE TECHNICAL MATERIEL CORPORATION  
MAMARONECK, NEW YORK



PLUG MUST PROTRUDE 3/4" PAST FRONT OF PANEL



A-10081

REF. DWG. LD-10023 PANEL ENGRAVING. (CPP2)  
" " LD-10027 " " (CPP2A)  
" " LD-10032 " " (CPP2B)

7	2	PL-274	COUPLER-AMPHENOL 83-1F
1	1	MS-10168	PATCH PANEL
REQ. ITEM	PART NO.	DESCRIPTION	
STOCK SIZE		TMC (Canada) LIMITED OTTAWA ONTARIO	
MATERIAL		PANEL ASSEMBLY	
WEIGHT PER PC.		FOR PATCH PANEL TYPE 2	
TYPE & TEMPER		L. MARION	4/22
HEAT TREAT. SPEC.		DRAWN E.M.B. 4.	ELEC. DES. APP. Boa
FINISH & SPEC. NO.		CHECKED	MECH. DES. APP. FINAL APPROVAL
		A-10081	

ISSUE	ITEM	CHANGED FROM	DATE	CN. NO.	DRAFTS	CHECKER	ENG. APP.
TOLERANCES				SCALE: FULL SIZE			
ALL OTHERS	DEC. DIM. ±	FRAC. DIM. ± 1/64		DRILL, PUNCH, COMMERCIAL STOCK SIZES AND MANUFACTURERS TOLERANCES ARE NOT INCLUDED.			
	ANGULAR DIM. ±						

CPP2B	8548	14/5/56	
CPP2A			
CPP2			
MODEL	PROJECT NO.	ASSY. NO.	DATE
USED ON			