

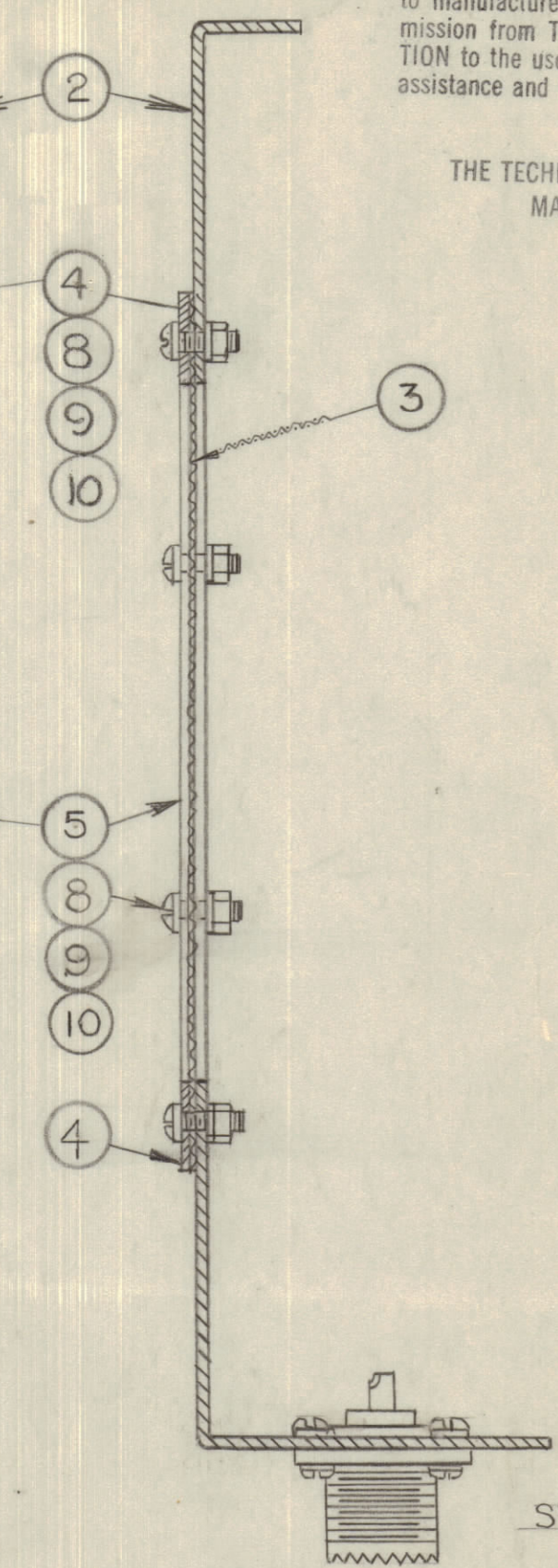
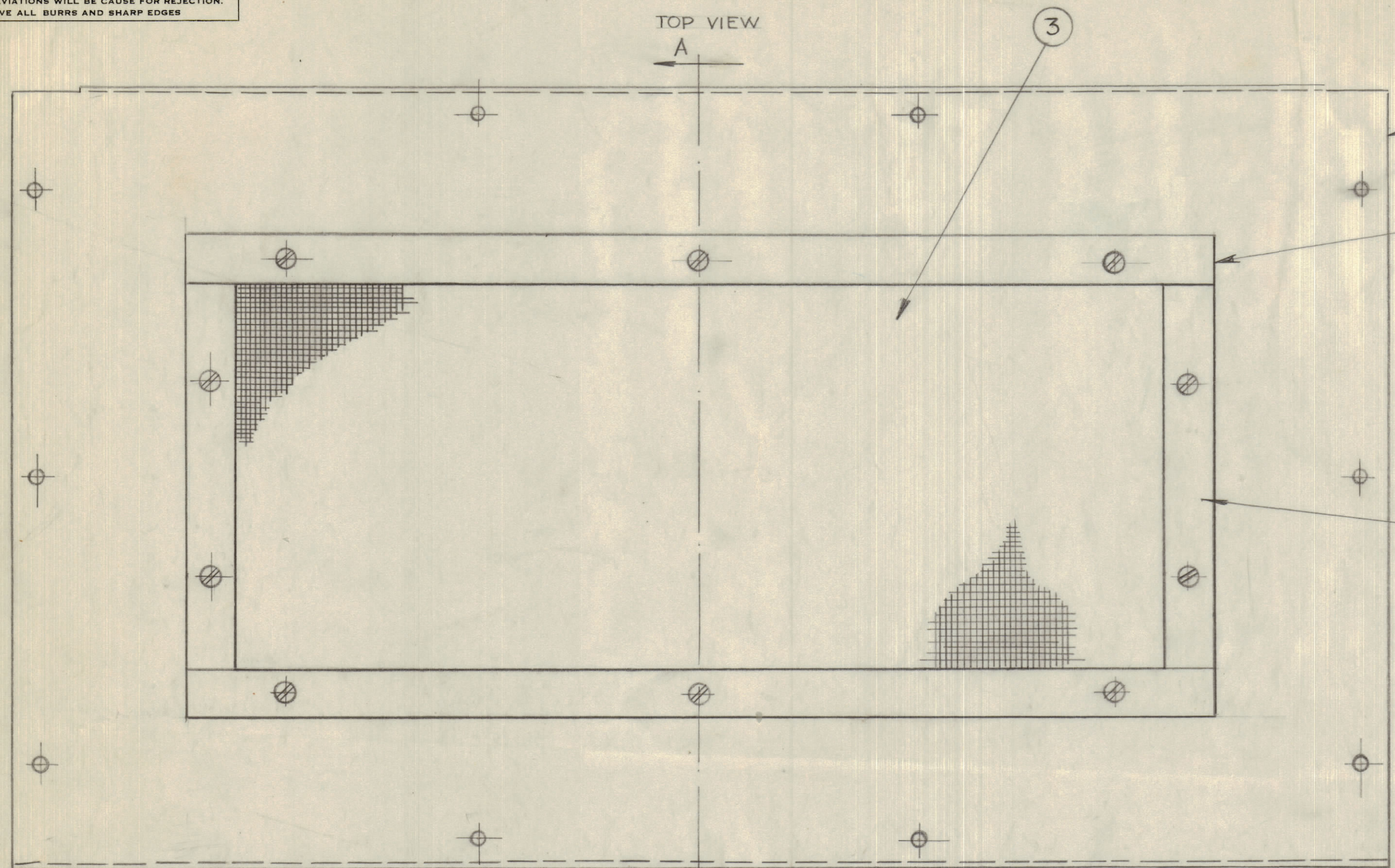
IF IT IS FOUND DESIRABLE TO CHANGE ANY TOLERANCE OR OTHER DETAIL SPECIFIED ON THIS DRAWING NOTIFY THE PURCHASER PROMPTLY.

MAXIMUM ALLOWABLE TOLERANCES HAVE BEEN DETERMINED AND DEVIATIONS WILL BE CAUSE FOR REJECTION. REMOVE ALL BURRS AND SHARP EDGES

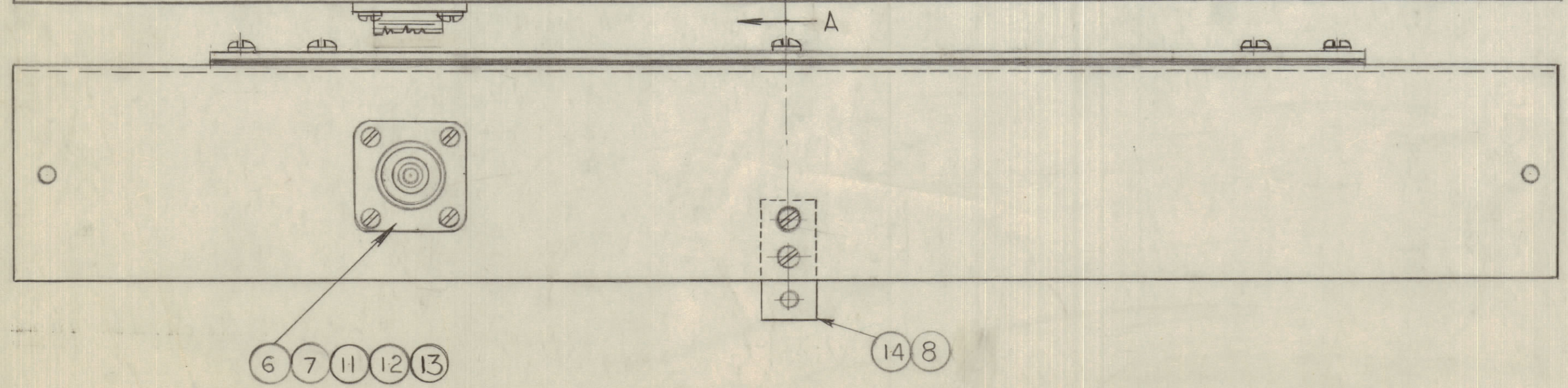
NOTICE TO PERSONS RECEIVING THIS DRAWING

THE TECHNICAL MATERIEL CORPORATION claims proprietary right in the material disclosed hereon. This drawing is issued in confidence for engineering information only and may not be reproduced or used to manufacture anything shown hereon without permission from THE TECHNICAL MATERIEL CORPORATION to the user. This drawing is loaned for mutual assistance and is subject to recall at any time.

Property of:
THE TECHNICAL MATERIEL CORPORATION
MAMARONECK, NEW YORK



A-10049



REAR VIEW

REQ. ITEM	PART NO.	DESCRIPTION	SYMBOL
1	14	MS-10102	STUD
4	13	NTH0440BC6	NUTS
4	12	LWS04MRS	LOCKWASHERS
4	11	SCB50440BC7	SCREWS
10	10	NTH0632BC8	NUTS
10	9	LWS06MRS	LOCKWASHERS
12	8	SCB50632BC5	SCREWS-MACHINE
1	7	PL-259	CONNECTOR PLUG
1	6	SO-239	CONNECTOR RECEPTACLE
2	5	MS-10107	STRIP-SCREEN VENT
2	4	MS-10106	STRIP-SCREEN VENT
1	3	SN-10001	SCREEN-VENT
1	2	MS-10100	BOTTOM COVER
1	1	THIS DWG	SUB-A ASSEMBLY

TMC (Canada) LIMITED
OTTAWA ONTARIO

SUB-ASSEMBLY-BOTTOM COVER

LF/MF BEACON C/O - DUMMY LOAD

E.W.B.G.
DRAWN ELEC. DES. APP. MECH. DES. APP.

CHECKED FINAL APPROVAL

A-10049

ISSUE	ITEM	CHANGED FROM	DATE	CN. NO.	DRAFTS	CHECKER	ENG. APP.
TOLERANCES							
ALL OTHERS				SCALE:			
DEC. DIM. ±				DRILL, PUNCH, COMMERCIAL STOCK			
FRAC. DIM. ±				SIZES AND MANUFACTURERS			
ANGULAR DIM. ±				TOLERANCES ARE NOT INCLUDED.			

MODEL	PROJECT NO.	ASS'Y. NO.	DATE
	A-10048	21-11-55	
USED ON			