

IF IT IS FOUND DESIRABLE TO CHANGE ANY TOLERANCE OR OTHER DETAIL SPECIFIED ON THIS DRAWING NOTIFY THE PURCHASER PROMPTLY.

A-10047

MAXIMUM ALLOWABLE TOLERANCES HAVE BEEN DETERMINED AND DEVIATIONS WILL BE CAUSE FOR REJECTION. REMOVE ALL BURRS AND SHARP EDGES

USED ON

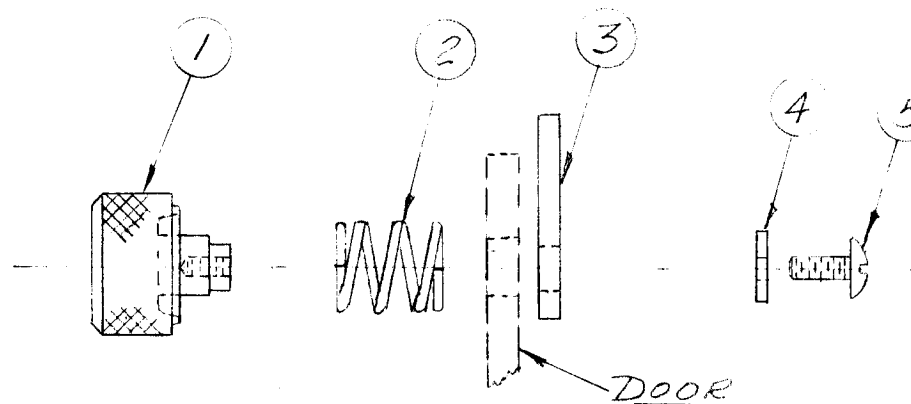
MODEL

PROJECT NO.

ASS'Y. NO.

DATE

A-10067 3-11-55



NOTICE TO PERSONS RECEIVING THIS DRAWING

THE TECHNICAL MATERIEL CORPORATION claims proprietary right in the material disclosed hereon. This drawing is issued in confidence for engineering information only and may not be reproduced or used to manufacture anything shown hereon without permission from THE TECHNICAL MATERIEL CORPORATION to the user. This drawing is loaned for mutual assistance and is subject to recall at any time.

Property of:

THE TECHNICAL MATERIEL CORPORATION
MAMARONECK, NEW YORK

1	5	SCBS0832BC4	SCREW 8-32 X 1/4	
1	1	LWI 08 MRC	WASHER STD FOR 8-32 SCREW	
1	3	MS-10128	KEEPER	
1	2	SP-10001	SPRING	
1	1	MS-10126	BUTTON	
REQ.	ITEM	PART NO.	DESCRIPTION	SYMBOL
STOCK SIZE			TMC (Canada) LIMITED OTTAWA ONTARIO	
MATERIAL				
WEIGHT PER PC.			TECH. REF. SWITCHING UNIT	
TYPE & TEMPER			L. MARION	
HEAT TREAT. SPEC.			DRAWN	
FINISH & SPEC. NO.			ELEC. DES. APP.	
			MECH. DES. APP.	
			CHECKED	
			FINAL APPROVAL	
			A-10047	

ISSUE	ITEM	CHANGED FROM	DATE	CN. NO.	DRAFTS	CHECKER	ENG. APP.
TOLERANCES			SCALE FULL SIZE				
ALL OTHERS	DEC. DIM. ± FRAC. DIM. ± ANGULAR DIM. ±		DRILL, PUNCH, COMMERCIAL STOCK SIZES AND MANUFACTURERS TOLERANCES ARE NOT INCLUDED.				

IF IT IS FOUND DESIRABLE TO CHANGE ANY TOLERANCE OR OTHER DETAIL SPECIFIED ON THIS DRAWING NOTIFY THE PURCHASER PROMPTLY.

A-10058-A

MAXIMUM ALLOWABLE TOLERANCES HAVE BEEN DETERMINED AND DEVIATIONS WILL BE CAUSE FOR REJECTION. REMOVE ALL BURRS AND SHARP EDGES

USED ON

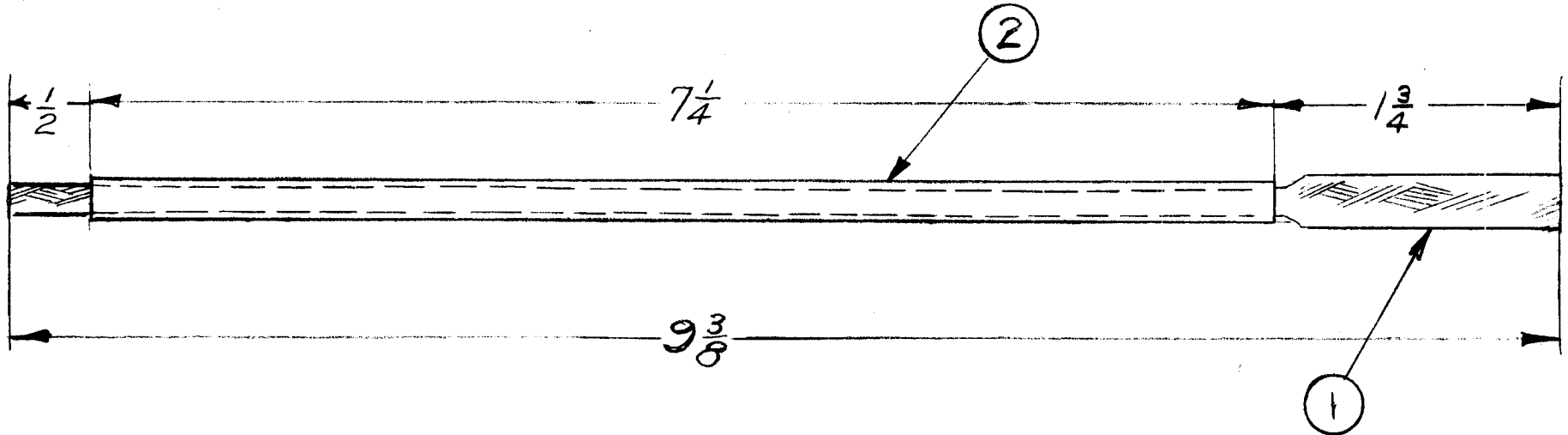
MODEL

PROJECT NO.

ASS'Y. NO.

DATE

A-10048 25/11/55



NOTE:- WIRE:- $\frac{1}{8}$ DIA - 96 STRAND - BRAIDED
TINNED COPPER N^o 34
BELDEN MFG. Co
CATALOGUE N^o 8660

1	2	PX-100-A-1-234	INSULATING SLEEVING	
REQ.	ITEM	PART NO.	DESCRIPTION	SYMBOL
STOCK SIZE			TMC (Canada) LIMITED OTTAWA ONTARIO	
MATERIAL			BRAID & SLEEVING ASSY.	
WEIGHT PER PC.			LF/MF BEACON-C/O DUMMY LOAD	
TYPE & TEMPER			E.W.B.G	
HEAT TREAT. SPEC.			DRAWN	
FINISH & SPEC. NO.			ELEC. DES. APP.	
			MECH. DES. APP.	
			CHECKED	
			FINAL APPROVAL	
			A-10058	
			A	

A	1	ITEM 1 DELETED NOTE-WIRE ADDED	6/3/55	E.G	<i>M. ad</i>	
ISSUE	ITEM	CHANGED FROM	DATE	CN. NO.	DRAFTS CHECKER	ENG. APP.

TOLERANCES		SCALE
ALL OTHERS	DEC. DIM. \pm FRAC. DIM. \pm ANGULAR DIM. \pm	DRILL, PUNCH, COMMERCIAL STOCK SIZES AND MANUFACTURERS TOLERANCES ARE NOT INCLUDED.

IF IT IS FOUND DESIRABLE TO CHANGE ANY TOLERANCE OR OTHER DETAIL SPECIFIED ON THIS DRAWING NOTIFY THE PURCHASER PROMPTLY.

A-10059

MAXIMUM ALLOWABLE TOLERANCES HAVE BEEN DETERMINED AND DEVIATIONS WILL BE CAUSE FOR REJECTION. REMOVE ALL BURRS AND SHARP EDGES

USED ON

MODEL

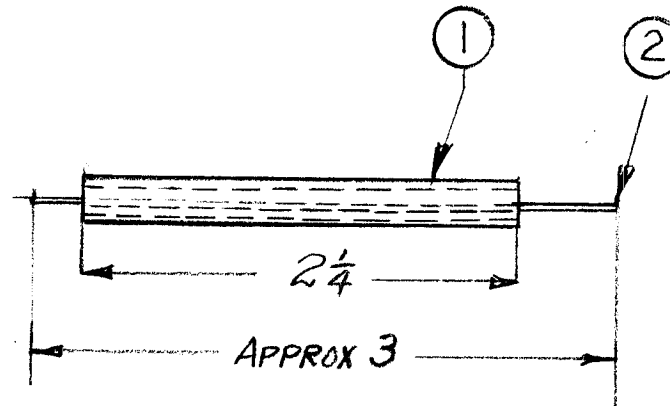
PROJECT NO.

ASS'Y. NO.

DATE

A-100-48

28-11-55



NOTICE TO PERSONS RECEIVING THIS DRAWING

THE TECHNICAL MATERIEL CORPORATION claims proprietary right in the material disclosed herein. This drawing is issued to you for your information only and is not to be used or referred to manufacture any thing, device or apparatus without permission from THE TECHNICAL MATERIEL CORPORATION to the user. This drawing is loaned for technical assistance and is subject to recall at any time.

Property of:

**THE TECHNICAL MATERIEL CORPORATION
MAMARONECK, NEW YORK**

1	2		BUSS BAR NO 20	
1	1	PX-100-A-T-234	INSULATING SLEEVING	
REQ.	ITEM	PART NO.	DESCRIPTION	SYMBOL
			TMC (Canada) LIMITED OTTAWA ONTARIO	
STOCK SIZE			BUS BAR & SLEEVING - SUB-ASSY	
MATERIAL		WEIGHT PER PC.	LF/MF BEACON C/O-DUMMY LOAD	
TYPE & TEMPER			E.W.B.G	
			DRAWN	ELEC. DES. APP. MECH. DES. APP.
HEAT TREAT. SPEC.			<i>W. C. C.</i>	
			CHECKED	FINAL APPROVAL
FINISH & SPEC. NO.			A-10059	

ISSUE	ITEM	CHANGED FROM	DATE	CN. NO.	DRAFTS	CHECKER	ENG. APP.
TOLERANCES			SCALE				
ALL OTHERS	DEC. DIM. ± FRAC. DIM. ± ANGULAR DIM. ±		DRILL, PUNCH, COMMERCIAL STOCK SIZES AND MANUFACTURERS TOLERANCES ARE NOT INCLUDED.				

IF IT IS FOUND DESIRABLE TO CHANGE ANY TOLERANCE OR OTHER DETAIL SPECIFIED ON THIS DRAWING NOTIFY THE PURCHASER PROMPTLY.

A-10072A

MAXIMUM ALLOWABLE TOLERANCES HAVE BEEN DETERMINED AND DEVIATIONS WILL BE CAUSE FOR REJECTION. REMOVE ALL BURRS AND SHARP EDGES

USED ON

MODEL

PROJECT NO.

ASS'Y. NO.

DATE

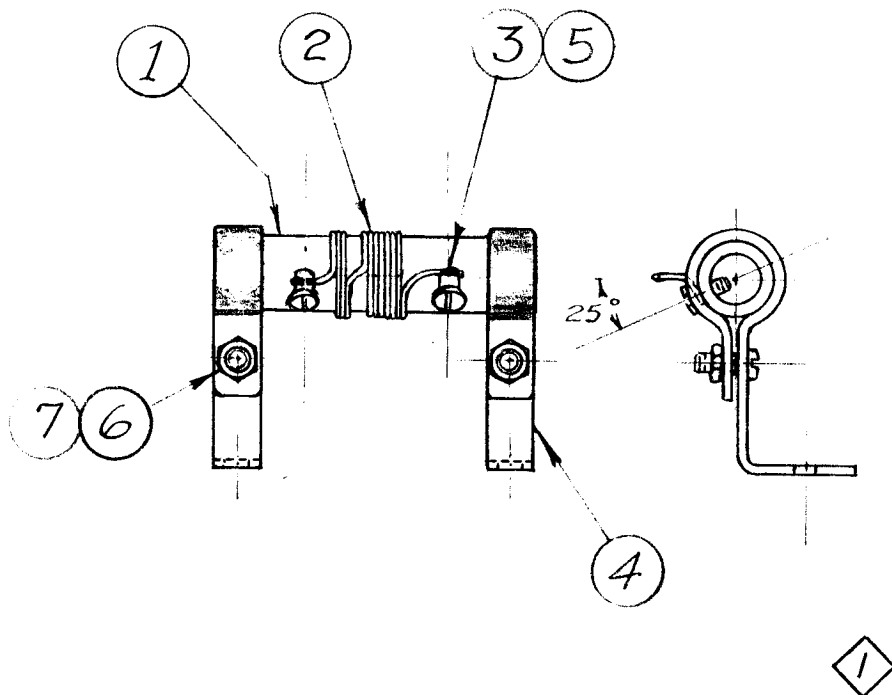
AMC 6-2
AMC 6-3

1/3/56

ELECTRICAL CHARACTERISTICS

200Ω, 0.74 UH ± .005

FOR COIL WINDING SEE CL-10002-A



REQ.	ITEM	PART NO.	DESCRIPTION	SYMBOL
2	7	NTH-0440 BC-6	NUT Hex. 4-40	
2	6	SC-B5-0440 BC-4	SCREWS MACHINE 4-40x1/4	
2	5	SC-B5-0440 BC-3	SCREWS MACHINE 4-40x3/16	
2	4	CU-10005	CLAMP	
2	3	-----	TERMINAL LUGS	
Y	2	-----	#16 ENAMELED WIRE	
1	1	CF-10008	COIL FORM	

TMC (Canada) LIMITED
OTTAWA ONTARIO

COIL-BRACKET ASSEMBLY

AMC 6 SERIES 2 & 3

L. MARION

DRAWN

ELEC. DES. APP.

MECH. DES. APP.

CHECKED

FINAL APPROVAL

A-10072

A

A	1	ITEM 2 WAS WF-122-80 MAGNET WIRE	14.8.56		DR. MR. L.L.M.	1000
ISSUE	ITEM	CHANGED FROM	DATE	CN. NO.	DRAFTS CHECKER	ENG. APP.

TOLERANCES

SCALE FULL SIZE

ALL OTHERS

DEC. DIM. ± —
FRAC. DIM. ± —
ANGULAR DIM. ± —

DRILL, PUNCH, COMMERCIAL STOCK
SIZES AND MANUFACTURERS
TOLERANCES ARE NOT INCLUDED.

FINISH & SPEC. NO.

IF IT IS FOUND DESIRABLE TO CHANGE ANY TOLERANCE OR OTHER DETAIL SPECIFIED ON THIS DRAWING NOTIFY THE PURCHASER PROMPTLY.

A-10078

MAXIMUM ALLOWABLE TOLERANCES HAVE BEEN DETERMINED AND DEVIATIONS WILL BE CAUSE FOR REJECTION. REMOVE ALL BURRS AND SHARP EDGES

USED ON

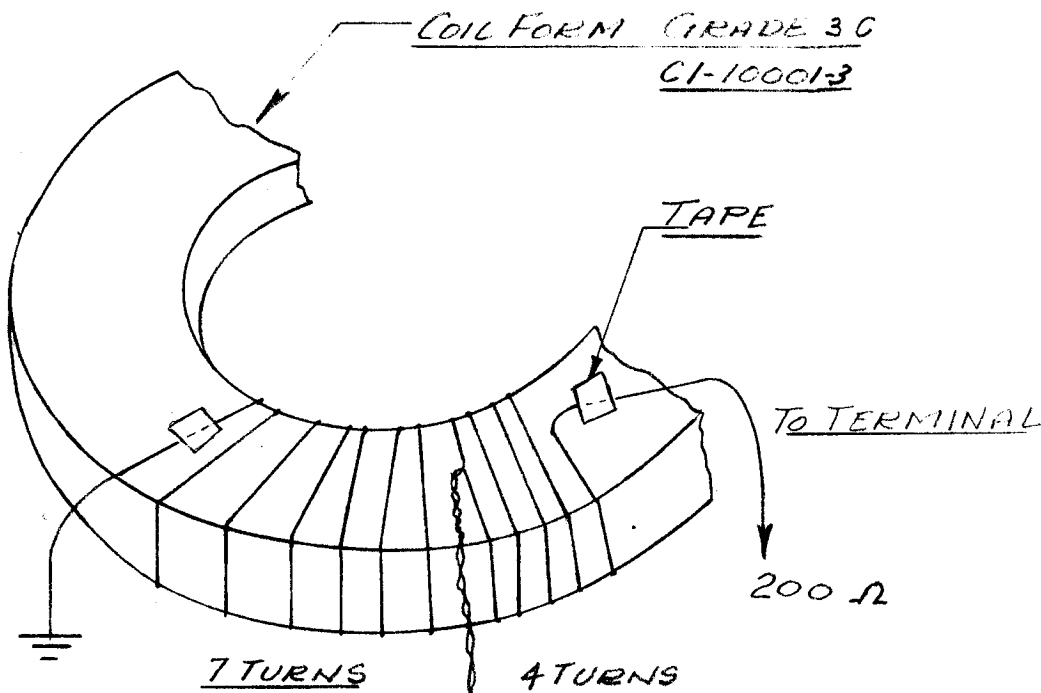
MODEL

PROJECT NO.

ASS'Y. NO.

DATE

A-10092 10/5/56



NOT TO BE RELEASED
W/O AUTHORIZATION

AUTH. BY.....

DATE:

To SO 239
CO-AX FITTING
SHOWN ON
DWG. A-10073

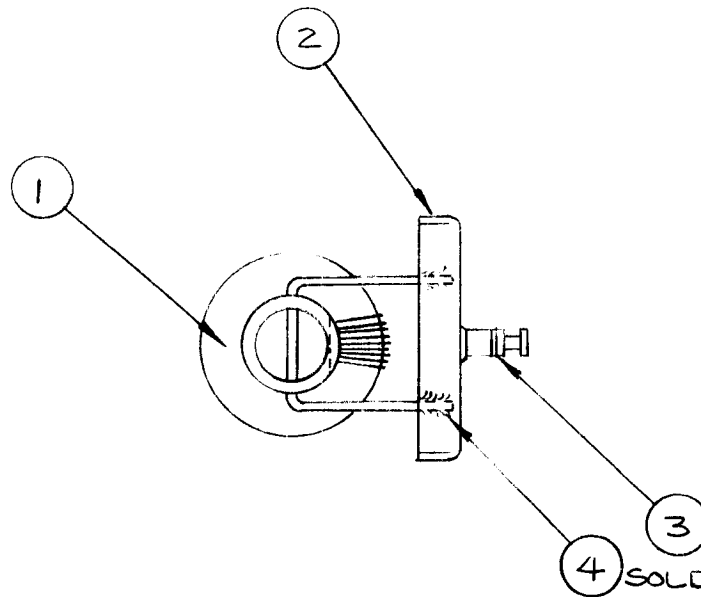
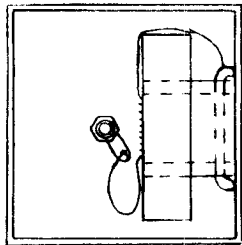
—	1	WI-10007	WIRE # 30 SINGLE POLY, SINGLE NYLON	
REQ.	ITEM	PART NO.	DESCRIPTION	SYMBOL
STOCK SIZE			TMC (Canada) LIMITED OTTAWA ONTARIO	
MATERIAL			WINDING DIAGRAM	
WEIGHT PER PC.			TR-070	
TYPE & TEMPER			L. MARION	R. W. J.
HEAT TREAT. SPEC.			DRAWN	ELEC. DES. APP. MECH. DES. APP.
FINISH & SPEC. NO.			CHECKED	FINAL APPROVAL
			A-10078	

ISSUE	ITEM	CHANGED FROM	DATE	CN. NO.	DRAFTS	CHECKER	ENG. APP.
-------	------	--------------	------	---------	--------	---------	-----------

TOLERANCES		SCALE
ALL OTHERS	DEC. DIM. ± FRAC. DIM. ± ANGULAR DIM. ±	DRILL, PUNCH, COMMERCIAL STOCK SIZES AND MANUFACTURERS TOLERANCES ARE NOT INCLUDED.

A 10091

ISSUE	ITEM	CHANGED FROM	DATE	CN. NO.	DRAFTS	CHECKER	ENG. APP.	REQ.	ITEM	PART NO.	DESCRIPTION	SYMBOL
A		REDRAWN & REV. TO CEMN	MAY 5/67	228	RPL	RPL	[Signature]	1	1	A10092	CORE, ASS'Y.	
								1	2	MS10151	TERMINAL, LID	
								1	3	TE126	TURRET	
								AR	4	BS100	SOLDER SOFT	



MODEL		PROJECT NO.		ASS'Y. NO.		DATE		STOCK SIZE		TMC (Canada) LIMITED OTTAWA ONTARIO			
				A10073		10/5/56				TERMINAL LID, SUB ASSY.			
USED ON				MATERIAL		WEIGHT PER PC.		TR070					
MAXIMUM ALLOWABLE TOLERANCES HAVE BEEN DETERMINED AND DEVIATIONS WILL BE CAUSE FOR REJECTION. REMOVE ALL BURRS AND SHARP EDGES				IF IT IS FOUND DESIRABLE TO CHANGE ANY TOLERANCE OR OTHER DETAIL SPECIFIED ON THIS DRAWING NOTIFY THE PURCHASER PROMPTLY.				TYPE & TEMPER		LM		R.W.S.	
TOLERANCES				SCALE NTS.				HEAT TREAT. SPEC.		DRAWN		ELEC. DES. APP.	MECH. DES. APP.
ALL OTHERS		DEC. DIM. ±		DIMENSIONS IN INCHES UNLESS OTHERWISE SPECIFIED				FINISH & SPEC. NO.		CHECKED		FINAL APPROVAL	A
		FRAC. DIM. ±		DRILL. PUNCH. COMMERCIAL STOCK SIZES AND MANUFACTURERS TOLERANCES ARE NOT INCLUDED.								A10091	A
		ANGULAR DIM. ±											

IF IT IS FOUND DESIRABLE TO CHANGE ANY TOLERANCE OR OTHER DETAIL SPECIFIED ON THIS DRAWING NOTIFY THE PURCHASER PROMPTLY.

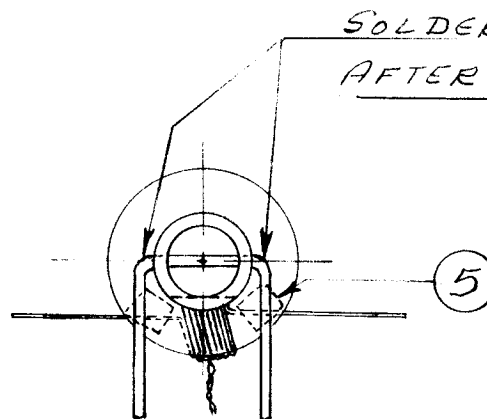
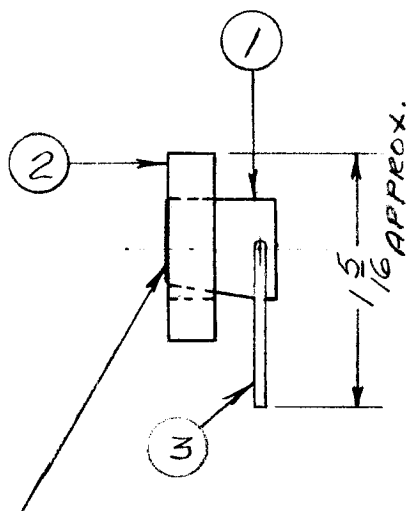
A-10092

MAXIMUM ALLOWABLE TOLERANCES HAVE BEEN DETERMINED AND DEVIATIONS WILL BE CAUSE FOR REJECTION. REMOVE ALL BURRS AND SHARP EDGES

USED ON

MODEL PROJECT NO. ASS'Y. NO. DATE

A-10091 3/28/56



SOLDER TWO SPOTS TO HOLD WIRE, AFTER INSERTING & FORMING BY HAND.

**NOT TO BE RELEASED
W/O AUTHORIZATION**

AUTH. BY:

DATE:

AFTER WINDING CORE AS PER A-10078, ASSEMBLE TUBING FLUSH WITH CORE FACE, USING SERVICE CEMENT.

NOTICE TO PERSONS RECEIVING THIS DRAWING

THE TECHNICAL MATERIEL CORPORATION claims proprietary right in the material disclosed herein. This drawing is issued in confidence for engineering information only and may not be reproduced or used to manufacture anything shown herein without permission from THE TECHNICAL MATERIEL CORPORATION to the user. This drawing is loaned for mutual assistance and is subject to recall at any time.

Property of:

**THE TECHNICAL MATERIEL CORPORATION
MAMARONECK, NEW YORK**

REF. A-10078 →

	6	BS-100	SOLDER - SOFT	
x	5	TA-1000-1	MASKING TAPE	
x	4	GL-10001	RADIO SERVICE CEMENT	
	1	3	WL-100-4	SUPPORT #16 TINNED COPPER-SOFT
	1	2	CI-10001-3	COIL FORM GRADE 3C
	1	1	PP-10056	CORE MOUNTING - BAKELITE TUBING

REQ.	ITEM	PART NO.	DESCRIPTION	SYMBOL
STOCK SIZE			TMC (Canada) LIMITED OTTAWA ONTARIO CORE ASSEMBLY TEO 70	
MATERIAL				
WEIGHT PER PC.			PW 9 MECH. DES. APP.	
TYPE & TEMPER			CHECKED FINAL APPROVAL	
HEAT TREAT. SPEC.			A-10092	
FINISH & SPEC. NO.				

ISSUE	ITEM	CHANGED FROM	DATE	CN. NO.	DRAFTS	CHECKER	ENG. APP.
TOLERANCES				SCALE FULL SIZE			
ALL OTHERS DEC. DIM. ± FRAC. DIM. ± ANGULAR DIM. ±				DRILL, PUNCH, COMMERCIAL STOCK SIZES AND MANUFACTURERS TOLERANCES ARE NOT INCLUDED.			

IF IT IS FOUND DESIRABLE TO CHANGE ANY TOLERANCE OR OTHER DETAIL SPECIFIED ON THIS DRAWING NOTIFY THE PURCHASER PROMPTLY.

A-10093.

MAXIMUM ALLOWABLE TOLERANCES HAVE BEEN DETERMINED AND DEVIATIONS WILL BE CAUSE FOR REJECTION. REMOVE ALL BURRS AND SHARP EDGES

USED ON

MODEL	PROJECT NO.	ASS'Y. NO.	DATE
-------	-------------	------------	------

8548

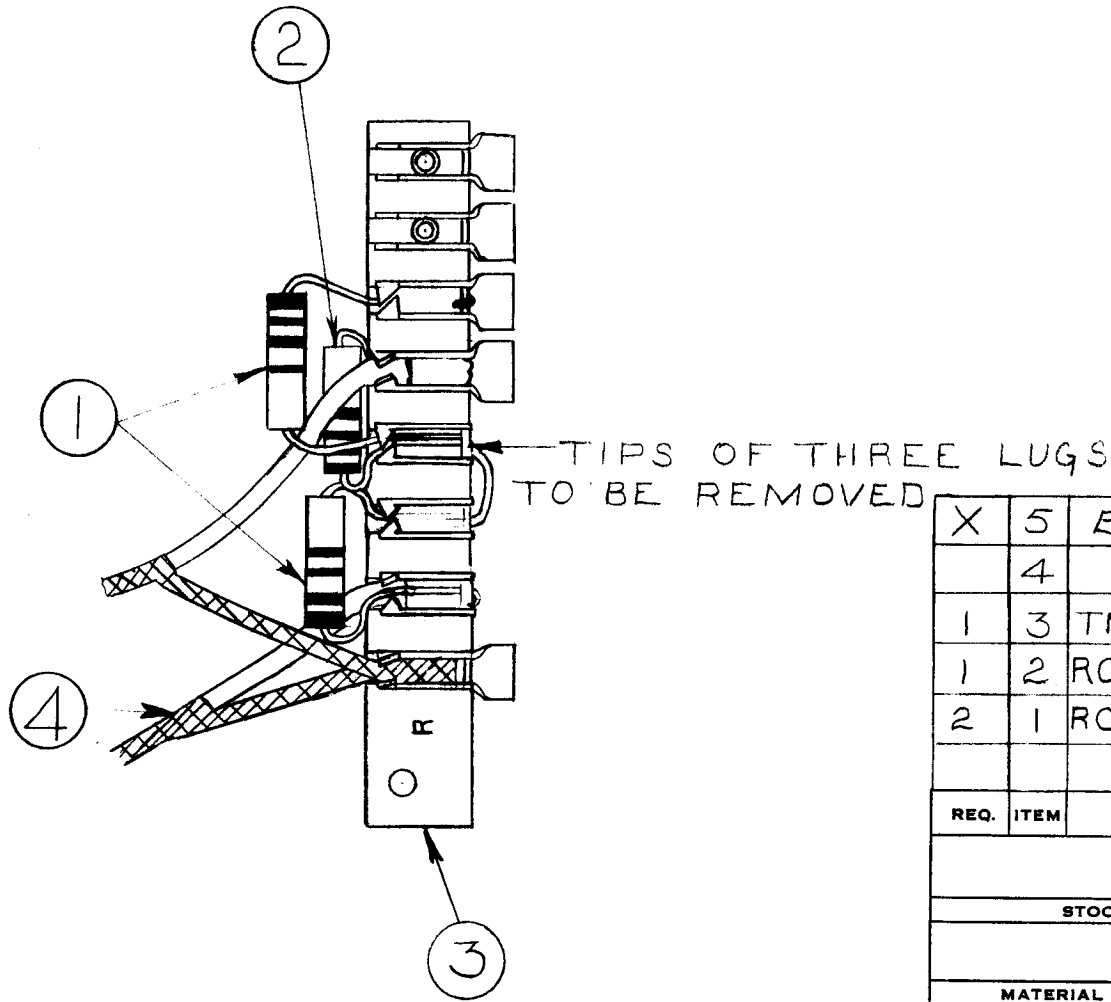
26/7/56

NOTICE TO PERSONS RECEIVING THIS DRAWING

THE TECHNICAL MATERIEL CORPORATION claims proprietary right in the material disclosed hereon. This drawing is issued in confidence for engineering information only and may not be reproduced or used to manufacture anything shown hereon without permission from THE TECHNICAL MATERIEL CORPORATION to the user. This drawing is loaned for mutual assistance and is subject to recall at any time.

Property of:

THE TECHNICAL MATERIEL CORPORATION
MAMARONECK, NEW YORK



X	5	BS-100	SOLDER - SOFT	
	4		CABLE - SHIELD.	
1	3	TM-105-14BAR	FANNING STRIP	
1	2	RC30GF221J	RESISTOR 220Ω	
2	1	RC30GF330K	RESISTOR 330Ω	

REQ.	ITEM	PART NO.	DESCRIPTION	SYMBOL
			TMC (Canada) LIMITED OTTAWA ONTARIO	
STOCK SIZE			FANNING STRIP ASSEMBLY	
MATERIAL			FOR FFR RECEIVER.	
WEIGHT PER PC.			THONG	
TYPE & TEMPER			DRAWN	ELEC. DES. APP. MECH. DES. APP.
HEAT TREAT. SPEC.			<i>M. Jurko</i> FINAL APPROVAL	
FINISH & SPEC. NO.			A-10093	

ISSUE	ITEM	CHANGED FROM	DATE	CN. NO.	DRAFTS	CHECKER	ENG. APP.
TOLERANCES			SCALE				
ALL OTHERS	DEC. DIM. ± FRAC. DIM. ± ANGULAR DIM. ±		DRILL, PUNCH, COMMERCIAL STOCK SIZES AND MANUFACTURERS TOLERANCES ARE NOT INCLUDED.				

IF IT IS FOUND DESIRABLE TO CHANGE ANY TOLERANCE OR OTHER DETAIL SPECIFIED ON THIS DRAWING NOTIFY THE PURCHASER PROMPTLY.

A10095 B

MAXIMUM ALLOWABLE TOLERANCES HAVE BEEN DETERMINED AND DEVIATIONS WILL BE CAUSE FOR REJECTION. REMOVE ALL BURRS AND SHARP EDGES

USED ON

MODEL

PROJECT NO.

ASS'Y. NO.

DATE

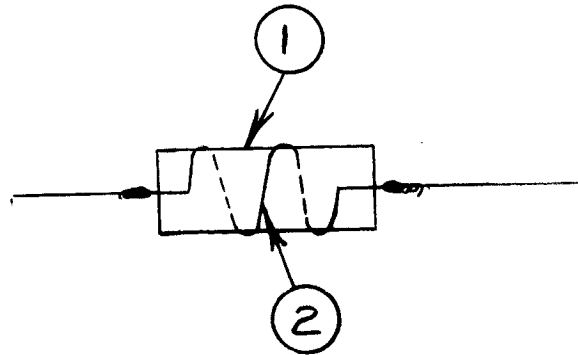
AMC 6-2/3

11/18/60

ELECTRICAL CHARACTERISTICS

2 TURNS

0.1145 ± .0005UH.



NOTICE TO PERSONS RECEIVING THIS DRAWING

THE TECHNICAL MATERIAL CORPORATION reserves all proprietary right in the material disclosed herein. This drawing is issued for the use of the purchaser only and may not be reprinted, copied, reproduced, exhibited, or in any way used for any purpose other than that intended by the issuer. The purchaser shall be held responsible for any substitution or modification of any kind.

THE TECHNICAL MATERIAL CORPORATION
MARONECK, NEW YORK

AR	2	WL100-7	WIRE, BUS #22.
1	1	RC32GF103K	RESISTOR
REQ.	ITEM	PART NO.	DESCRIPTION
			SYMBOL
STOCK SIZE			TMC (Canada) LIMITED OTTAWA ONTARIO
MATERIAL			COIL ASS'Y
WEIGHT PER PC.			AMC 6-2/70 & AMC 6-3/70
TYPE & TEMPER			JPC
HEAT TREAT. SPEC.			M. V. ELEC. DES. APP. MECH. DES. APP.
FINISH & SPEC. NO.			CHECKED FINAL APPROVAL
			A10095 B

B	REDRAWN	11/11/1960	JPC	Leik	M. V.		
ISSUE	ITEM	CHANGED FROM	DATE	CN. NO.	DRAFTS	CHECKER	ENG. APP.
TOLERANCES		SCALE 2:1					
ALL OTHERS		DIMENSIONS IN INCHES UNLESS OTHERWISE SPECIFIED					
		DRILL, PUNCH, COMMERCIAL STOCK SIZES AND MANUFACTURERS TOLERANCES ARE NOT INCLUDED.					