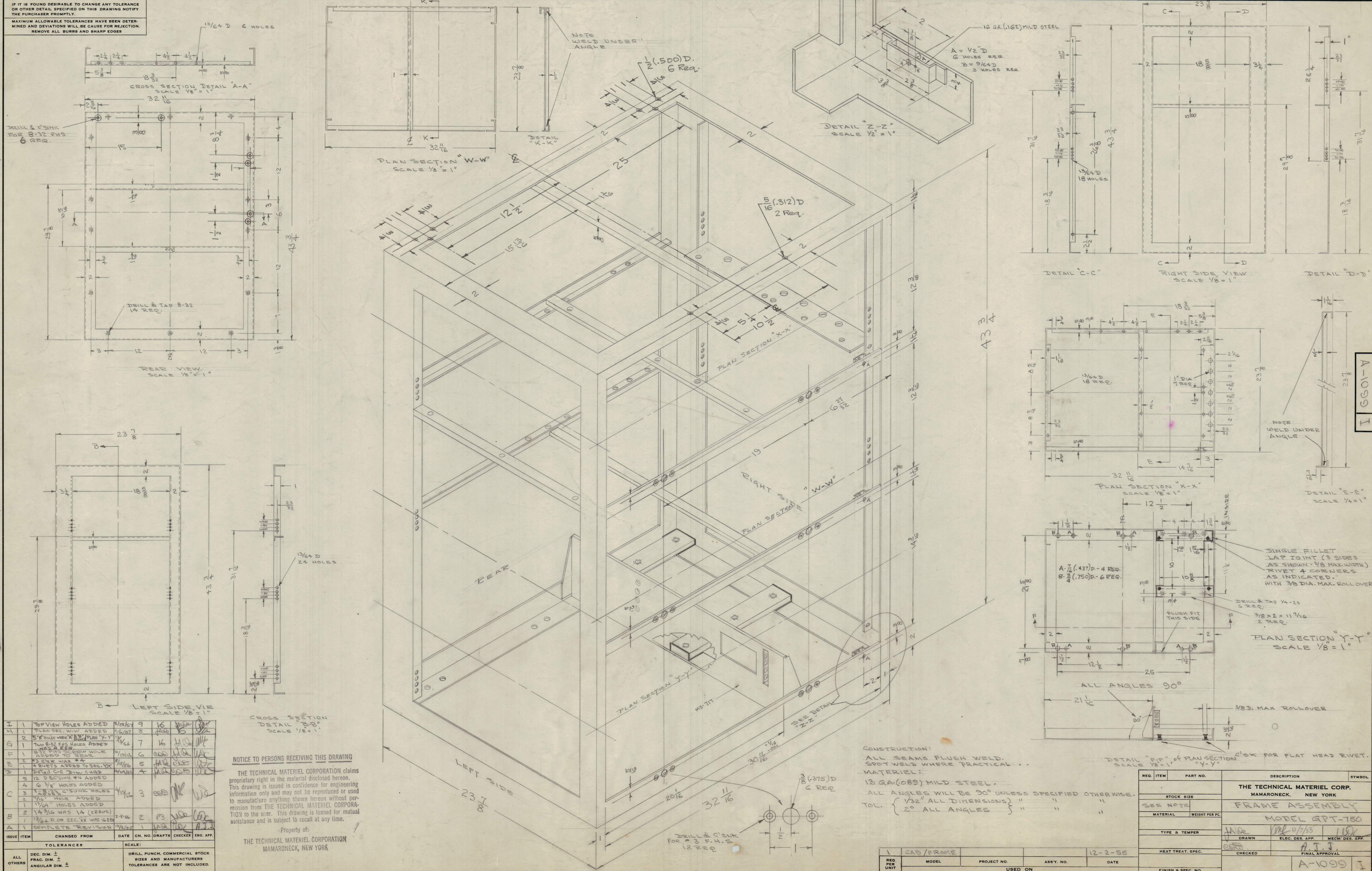


IF IT IS FOUND DESIRABLE TO CHANGE ANY TOLERANCE OR OTHER DETAIL SPECIFIED ON THIS DRAWING NOTIFY THE PURCHASER PROMPTLY.
 MAXIMUM ALLOWABLE TOLERANCES HAVE BEEN DETERMINED AND DEVIATIONS WILL BE CAUSE FOR REJECTION. REMOVE ALL BURRS AND SHARP EDGES.



ISSUE	ITEM	CHANGED FROM	DATE	CH. NO.	DRAFTS	CHECKER	ENG. APP.
I	1	TOP VIEW HOLES ADDED	12/15/54	9			
H	1	PLAN SEC. W-W ADDED	12/15/54	8			
G	2	5" HOLES WERE A/B PLAN Y-Y	12/15/54	7			
F	1	TWO 8-32 F.H.S HOLES ADDED	12/15/54	6			
E	1	8-32 F.H.S HOLES ADDED TO REAR	12/15/54	5			
D	1	4 RIVETS ADDED TO SEC. Y-Y	12/15/54	4			
C	1	12 Ø SCREWS ADDED	12/15/54	3			
B	1	1/4" DIA WAS 1/4" (ERROR)	12/15/54	2			
A	1	COMPLETE REVISION	12/15/54	1			

NOTICE TO PERSONS RECEIVING THIS DRAWING
 THE TECHNICAL MATERIEL CORPORATION claims proprietary right in the material disclosed herein. This drawing is issued in confidence for engineering information only and may not be reproduced or used to manufacture anything shown hereon without permission from THE TECHNICAL MATERIEL CORPORATION to the user. This drawing is loaned for mutual assistance and is subject to recall at any time.

Property of:
 THE TECHNICAL MATERIEL CORPORATION
 MAMARONECK, NEW YORK

CONSTRUCTION:
 ALL SEAMS FLUSH WELD. SPOT WELD WHERE PRACTICAL.
MATERIAL:
 13 GA. (089) MILD STEEL.
 ALL ANGLES WILL BE 90° UNLESS SPECIFIED OTHERWISE.
 TOL. { 1/32" ALL DIMENSIONS } " " "
 { 2° ALL ANGLES } " " "

REQ. PER UNIT	MODEL	PROJECT NO.	ASSY. NO.	DATE
1	CAB / FRAME			12-2-55

REQ. ITEM	PART NO.	DESCRIPTION	SYMBOL
THE TECHNICAL MATERIEL CORP.			
MAMARONECK, NEW YORK			
FRAME ASSEMBLY			
MODEL GPT-750			
DRAWN		ELEC. DES. APP.	MECH. DES. APP.
CHECKED		FINAL APPROVAL	
A-1099 I			