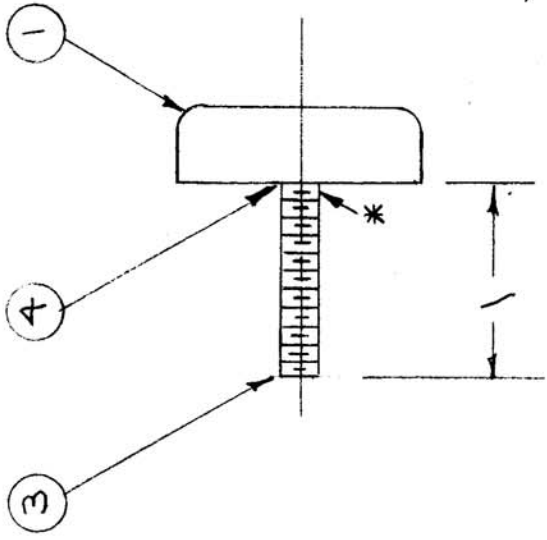
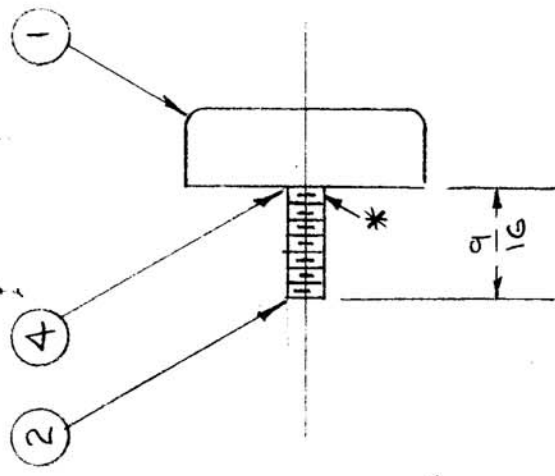


| | | | | |
|---------------|---------|-------|-----------|----------|
| REQ. PER UNIT | USED ON | MODEL | ASSY. NO. | DATE |
| 1 EA. | RTF | RTF | | 1/6/56 |
| 1 EA. | RTF-2 | P/A | | 11/20/58 |

A-1094 B



A-1094-2
 * THREADS MUST BE FREE OF SOLDER TO WITHIN 3/16" OF CONTACT (ITEM ①)



A-1094-1
 * THREADS MUST BE FREE OF SOLDER TO WITHIN 1/16" OF CONTACT (ITEM ②)

FINISH:
 S245 - SILVER PLATE .0003
 S423 - CLEAR IRIDITE

| | | | |
|----------------|---|---------|----------------------------------|
| DEC. DIM. ± | TOLERANCES | | |
| FRAC. DIM. ± | MAXIMUM ALLOWABLE TOLERANCES HAVE BEEN DETERMINED AND ANY DEVIATIONS WILL BE CAUSE FOR REJECTION. | | |
| ANGULAR DIM. ± | REMOVE ALL BURRS AND SHARP EDGES | | |
| ISSUE ITEM | CHANGED FROM | DATE | CH. NO. DRAFTS CHECKER ENG. APP. |
| B 1 | SOLDER NOTES ADDED | 3/31/64 | 11151 AM. [Signature] |
| A 1 | FINISH & SPEC. WAS SILVER PLATE .0003 | 1-9-63 | 7980 [Signature] |

| REQ. ITEM | PART NO. | DESCRIPTION | SYMBOL |
|--------------------|----------|---|--------|
| X 4 | BS-104 | EUTECTIC, TIN WELD | |
| 1 | SC-130 | STUD | |
| 1 | SC-127-2 | STUD | |
| 2 | PM-358 | CONTACT | |
| STOCK SIZE | | THE TECHNICAL MATERIEL CORP. MAMARONECK. NEW YORK | |
| MATERIAL | | CONTACT BUTTON ASSY. POWER AMPL. GPT-750 | |
| TYPE & TEMPER | | DRAWN [Signature] | |
| HEAT TREAT. SPEC. | | CHECKED [Signature] | |
| SEE NOTE | | FINAL APPROVAL [Signature] | |
| FINISH & SPEC. NO. | | ELEC. DES. APP. MECH. DES. APP. | |

A-1094 B