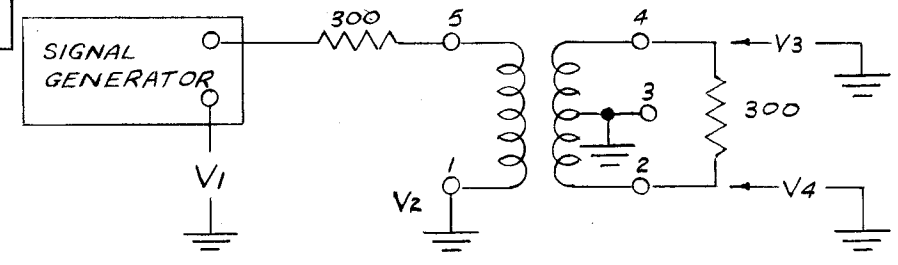


IF IT IS FOUND DESIRABLE TO CHANGE ANY TOLERANCE OR OTHER DETAIL SPECIFIED ON THIS DRAWING NOTIFY THE PURCHASER PROMPTLY.

MAXIMUM ALLOWABLE TOLERANCES HAVE BEEN DETERMINED AND DEVIATIONS WILL BE CAUSE FOR REJECTION. REMOVE ALL BURRS AND SHARP EDGES

NOT TO BE RELEASED W/O AUTHORIZATION

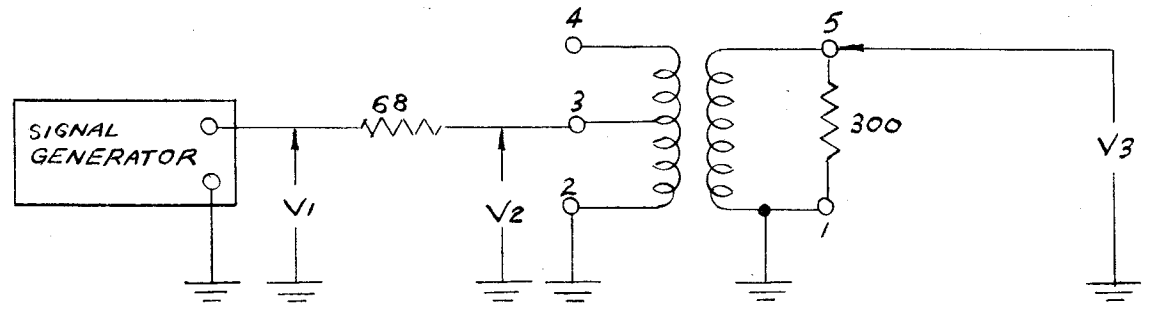
AUTH. BY: _____
DATE: _____



TEST 2

KC	V1	V2	V3	V4
100	1.0	.4	.16	.16
200	1.0	.44	.2	.19
500	1.0	.45	.2	.2

A-1091



TEST 1

KC	V1	V2	V3
100	1.0	.42	.86
200	1.0	.42	.86
500	1.0	.56	.84

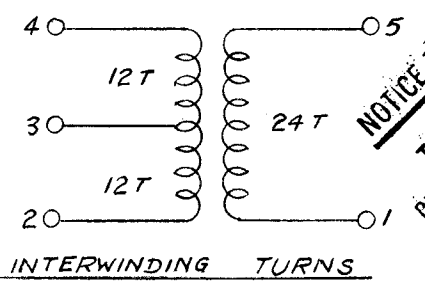
NOT TO BE RELEASED W/O AUTHORIZATION

AUTH. BY: _____
DATE: _____

TWO #30 COTENAMEL WIRES 4-5 ARE STARTED TOGETHER SIDE BY SIDE TWELVE (12) TURNS OF THIS ADJOINING WIRE ARE PUT ON. TAP IS BROUGHT IN WINDING 4 AT 3. TWELVE (12) MORE WINDINGS OF EACH THEN LAID ON.

CONNECTIONS

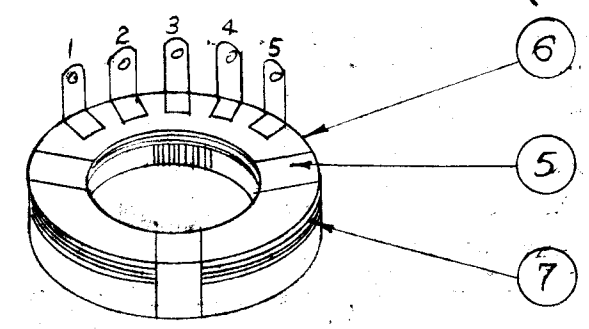
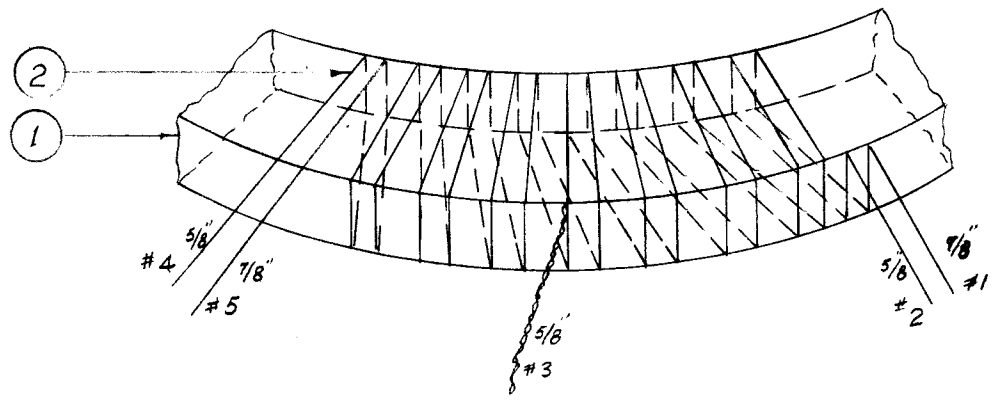
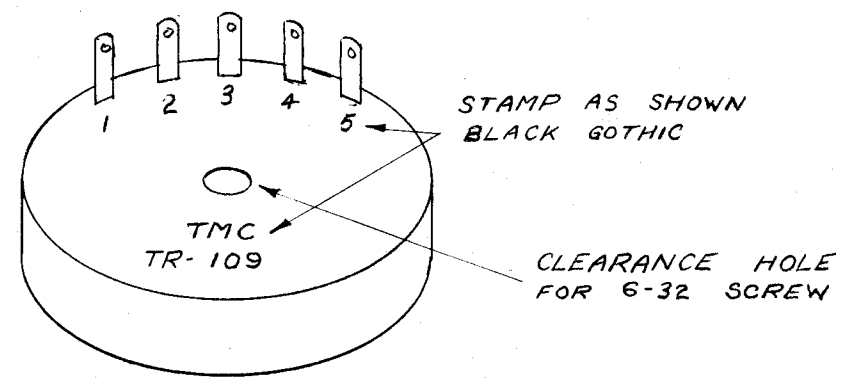
3-2 70 Ω BAL.-UNBAL. INPUT
4-2 300 Ω BAL.-UNBAL. INPUT
1-5 300 Ω UNBAL. OUTPUT
FREQUENCY RANGE - 100-500 KC



NOTICE TO PERSONS RECEIVING THIS DRAWING

THE TECHNICAL MATERIEL CORPORATION claims proprietary right in the material disclosed hereon. This drawing is issued in confidence for engineering information only and may not be reproduced or used to manufacture anything shown hereon without permission from THE TECHNICAL MATERIEL CORPORATION to the user. This drawing is loaned for mutual assistance and is subject to recall at any time.

Property of:
THE TECHNICAL MATERIEL CORPORATION
MAMARONECK, NEW YORK



USE ONE OF ITEM 6 FLAT, FOLD OTHER IN HALF & PLACE AS SHOWN TO TAKE UP SPACE OF WIRES & TERM. CRIMP ON OTHER SIDE OF CORE.

REQ.	ITEM	PART NO.	DESCRIPTION	SYMBOL
	1	7	A-1064	INSULATOR ASS'Y.
	2	6	IM-155	INSULATOR
	X	5	TA-100-1	TAPE
	X	4	GL-106	COMPOUND, PLASTIC
	X	3	GL-102	G.-MAX A-27
	X	2	WI-102-9	WIRE #30
	1	1	CI-104	CORE
			THE TECHNICAL MATERIEL CORP., MAMARONECK, NEW YORK	
STOCK SIZE			ANTENNA TRANSFORMER	
MATERIAL			MODEL - TR-109	
WEIGHT PER PC.				
TYPE & TEMPER			PB 9-14-55	
HEAT TREAT. SPEC.			DRAWN: <i>clb</i> ELEC. DES. APP. <i>AMB</i> MECH. DES. APP. <i>WDC</i>	
FINISH & SPEC. NO.			CHECKED: _____ FINAL APPROVAL: _____	
			A-1091	

ISSUE	ITEM	CHANGED FROM	DATE	CN. NO.	DRAFTS	CHECKER	ENG. APP.
TOLERANCES							
ALL OTHERS		DEC. DIM. ± FRAC. DIM. ± ANGULAR DIM. ±		SCALE:			
				DRILL, PUNCH, COMMERCIAL STOCK SIZES AND MANUFACTURERS TOLERANCES ARE NOT INCLUDED.			
REQ. PER UNIT		MODEL		PROJECT NO.		ASSY. NO.	
USED ON							