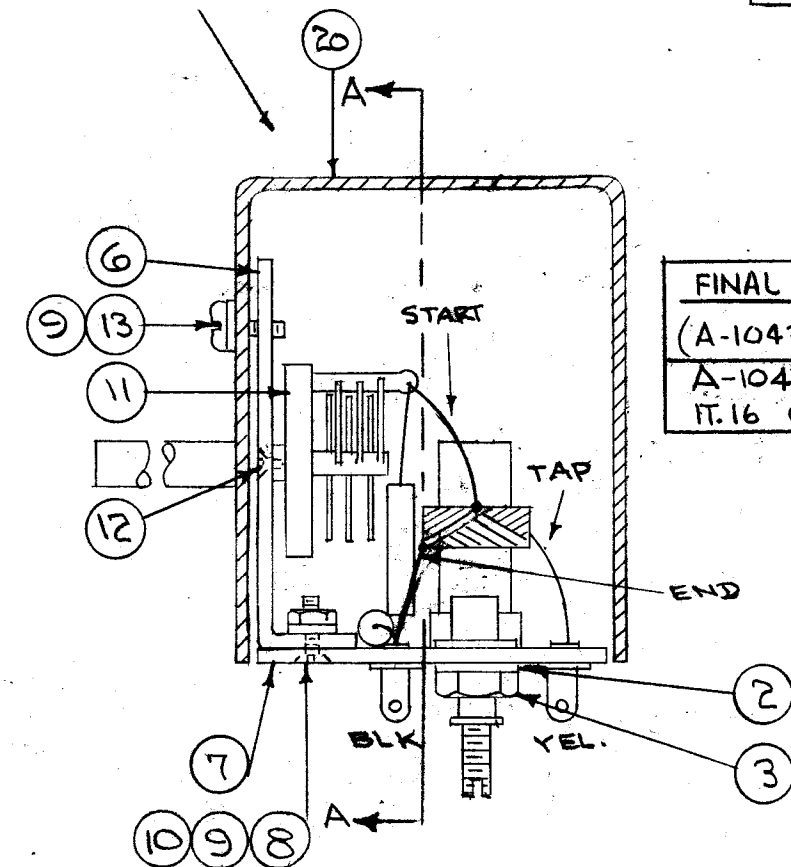


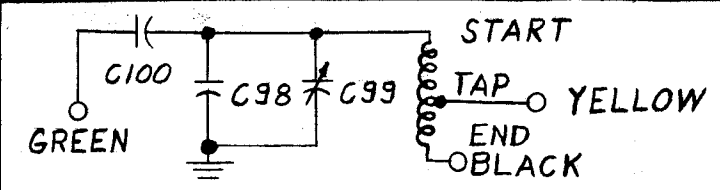
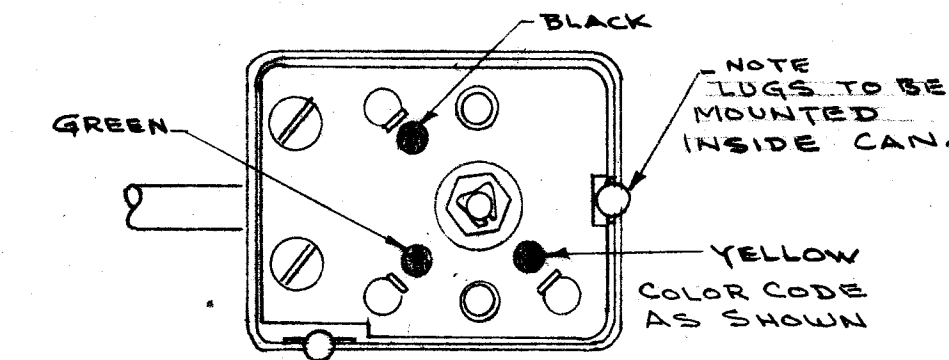
IF IT IS FOUND DESIRABLE TO CHANGE ANY TOLERANCE OR OTHER DETAIL SPECIFIED ON THIS DRAWING NOTIFY THE PURCHASER PROMPTLY.

MAXIMUM ALLOWABLE TOLERANCES HAVE BEEN DETERMINED AND DEVIATIONS WILL BE CAUSE FOR REJECTION. REMOVE ALL BURRS AND SHARP EDGES

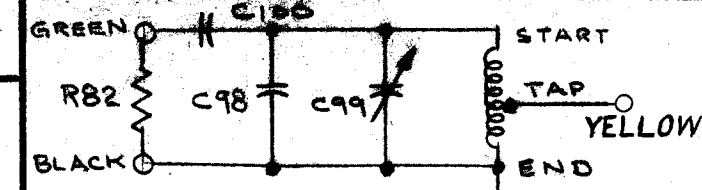
STAMP TOP OF CAN-A1043-\*  
1/8 HIGH BLACKGOTHIC, WITH LATEST REV. LETTER.



FINAL ASSEMBLIES  
(A-1043-2) AS SHOWN  
A-1043-3 WITH  
IT. 16 OMITTED



WIRING DIAGRAM  
A1043-3  
\* R82 ITEM 16 OMITTED FOR A1043-3

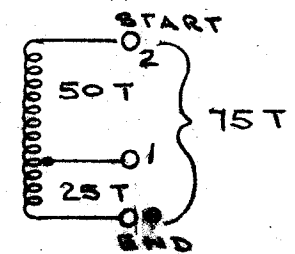
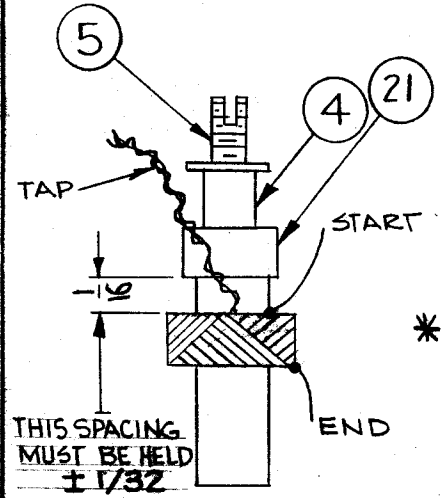


WIRING DIAGRAM  
A1043-2

NOTE:  
BEFORE ASSY.  
OF CAPACITOR  
TO CAN. PAINT  
ARROW ON SHAFT AS ABOVE. PLATES  
MUST BE FULLY MESHED WHEN ARROW  
IS IN ABOVE POSITION.

A  
1043  
4

A 1043-1  
CEMENT COIL TO  
BUSHING WITH GL-103



WINDING MACHINE DATA

DRIVER GEAR	80
CAM GEAR	806
CAM	.125

COIL FABRICATION  
WIND ON 50 TURNS AND BRING  
OUT TAP, STOP AT 75 TURNS.  
STAKE LEADS TO COIL FORM  
WITH CEMENT (GL-103).  
BAKE DRY FOR 1/2 HOUR AT 215°F.  
APPLY COATING OF Q-MAX (GL-102).  
BAKE FOR 1/2 HOUR AT 215°F.

ELECTRICAL SPEC (w/o Bushing + Core)

*L (0-2)	75 μh (71-79)
*L (1-2)	33 μh (31.5-34.5)
**R (0-2)	2.1 Ω APPROX.
f	2.5 mc.
*Q	70 OR GREATER

COIL WINDING  
DATA  
(A 1043-1)

\* BOONTON 160 A Q-METER OR EQUIV.  
\*\* SIMPSON 260 Ω METER OR EQUIV.

REQ. ITEM	PART NO.	DESCRIPTION	SYMBOL	
X 24	GL-103	CEMENT		
X 23	GL-102	Q-MAX		
X 22	WI-104-12+35CQ5	WIRE, LITZ		
X 22	BS-100	SOLDER, SOFT		
1	SM-110	BUSHING		
1	A-907	CAN ASSY, BFO		
1	TE-149-1A	LUG, GROUND		
X 18	PX-104-A-022	INSULATION, SLEEVING, GRN.		
X 17	WL-100-7	WIRE, BUSS BAR 22GA.		
1	16	RC20GF473J	RESISTOR, FIXED R82	
1	15	CM.100-10	CAPACITOR, " 1500μfd C98	
1	14	CC-101-3	" " 220μfd C100	
1	13	SCBP0632BN4	SCREW, MACHINE	
2	12	SCFP0440BN4	" " " " " "	
1	11	CT-104-4	CAPACITOR, VARIABLE C99	
2	10	NTH0632BN8	NUT, HEX	
3	9	LWJ06MRN	WASHER, LOCK	
2	8	SCFP0632BN6	SCREW, MACHINE	
1	7	A-908	TERM. BD. ASSY.	
1	6	MS-591	BRACKET, BFO	
1	5	CI-109-11	CORE	
1	4	SP-102	SPRING CLIP	
1	3	NT-102	NUT, HEX	
1	2	LWJ25LRC	WASHER, LOCK	
1	1	CT-117-1.0	COIL FORM	

ISSUE	ITEM	CHANGED FROM	DATE	CN. NO.	DRAFTS	CHECKER	ENG. APP.

TOLERANCES	SCALE:
ALL OTHERS	DEC. DIM. ±
	FRAC. DIM. ±
	ANGULAR DIM. ±
	DRILL, PUNCH, COMMERCIAL STOCK SIZES AND MANUFACTURERS TOLERANCES ARE NOT INCLUDED.

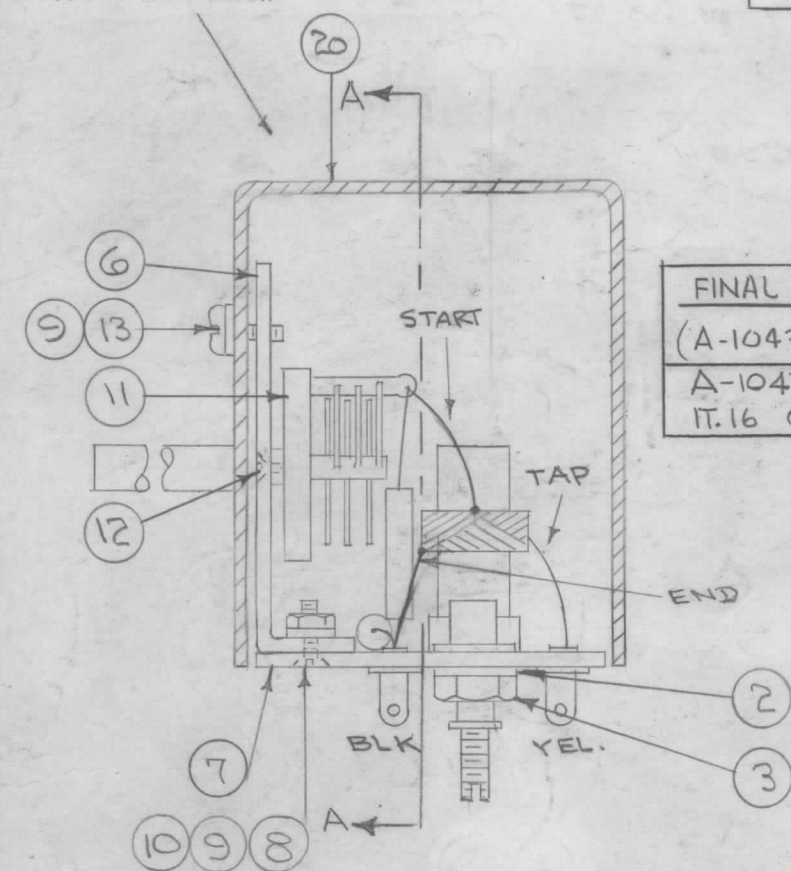
1	GPR90RXDS			
1	GPR	L22	6-23-55	
REQ. PER UNIT	MODEL	PROJECT NO.	SYMBOL NO.	DATE

THE TECHNICAL MATERIEL CORP. MAMARONECK, NEW YORK		
COIL, RF, TUNED.		
BFO OSCILLATOR		
STOCK SIZE		
MATERIAL	WEIGHT PER PC.	
TYPE & TEMPER	CDS. 6-23-55	III
HEAT TREAT. SPEC.	CHECKED	FINAL APPROVAL
		G.T.O.
		A 1043-3

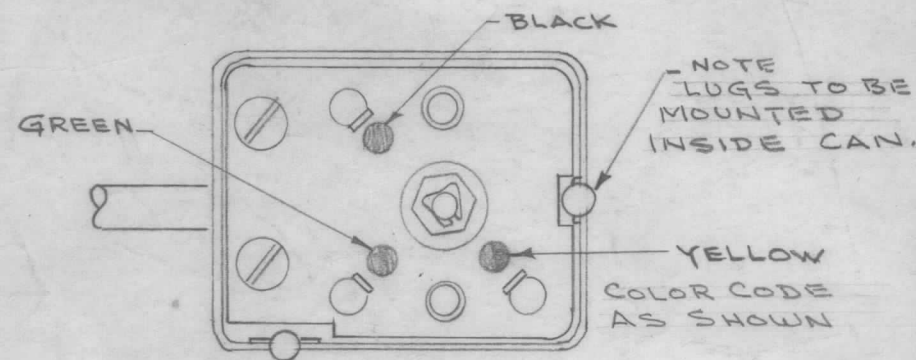
IF IT IS FOUND DESIRABLE TO CHANGE ANY TOLERANCE OR OTHER DETAIL SPECIFIED ON THIS DRAWING NOTIFY THE PURCHASER PROMPTLY.

MAXIMUM ALLOWABLE TOLERANCES HAVE BEEN DETERMINED AND DEVIATIONS WILL BE CAUSE FOR REJECTION. REMOVE ALL BURRS AND SHARP EDGES

STAMP TOP OF CAN-A1043-\*  
1/8 HIGH BLACKGOTHIC, WITH LATEST REV. LETTER.

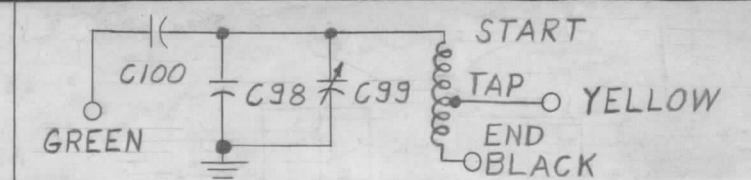


FINAL ASSEMBLIES  
(A-1043-2) AS SHOWN  
A-1043-3 WITH  
IT. 16 OMITTED

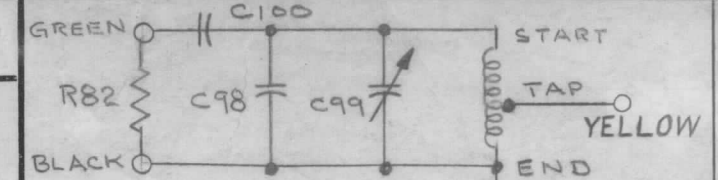


T	S	R	ISSUE	ITEM	CHANGED FROM	DATE	CN. NO.	DRAFTS	CHECKER	ENG. APP.
					SCHMATIC FOR A1043-3 ADDED	3-31-67	18057	L.A.K.	[Signature]	
					ADD MODEL NO. ADD * TO IT. 16. ADD * TO R82 & NOTE CHGD ASSY INFO BLOCK	10-14-66	17038	R.M.E.	[Signature]	
					IT. 16 TOL. WAS "K". IT IS NOW CM20D152G. HARDWARE WAS C& SCBS	9-26-66	16092	R.M.E.	[Signature]	

TOLERANCES		SCALE:
ALL OTHERS	DEC. DIM. ± FRAC. DIM. ± ANGULAR DIM. ±	DRILL, PUNCH, COMMERCIAL STOCK SIZES AND MANUFACTURERS TOLERANCES ARE NOT INCLUDED.



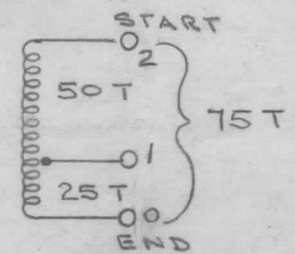
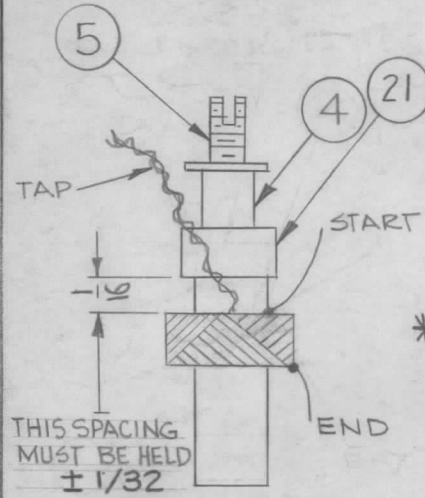
WIRING DIAGRAM  
A1043-3  
\* R82 ITEM 16 OMITTED FOR A1043-3



WIRING DIAGRAM  
A1043-2

NOTE:  
BEFORE ASSY. OF CAPACITOR TO CAN. PAINT ARROW ON SHAFT AS ABOVE. PLATES MUST BE FULLY MESHED WHEN ARROW IS IN ABOVE POSITION.

A 1043-1  
CEMENT COIL TO BUSHING WITH GL-103



WINDING MACHINE DATA

DRIVER GEAR	80
CAM GEAR	86
CAM	.125

COIL FABRICATION  
WIND ON 50 TURNS AND BRING OUT TAP, STOP AT 75 TURNS. STAKE LEADS TO COIL FORM WITH CEMENT (GL-103). BAKE DRY FOR 1/2 HOUR AT 215°F. APPLY COATING OF Q-MAX (GL-102). BAKE FOR 1/2 HOUR AT 215°F.

ELECTRICAL SPEC (w/o Bushing + core)

* L (0-2)	75 μh (71-79)
* L (1-2)	33 μh (31.5-34.5)
** R (0-2)	2.1 Ω APPROX
f	2.5 mc.
* Q	70 OR GREATER

COIL WINDING DATA  
(A 1043-1)

\* BOONTON 160 A Q-METER OR EQUIV.  
\*\* SIMPSON 260 Ω METER OR EQUIV.

X	24	GL-103	CEMENT	
X	23	GL-102	Q+MAX	
X	22	WI-104-12435CQ5	WIRE, LITZ	
X	22	BS-100	SOLDER, SOFT	
1	21	SM-110	BUSHING	
1	20	A-907	CAN ASSY, BFO	
1	19	TE-149-144	LUG, GROUND	
X	18	PX-104-A-022	INSULATION, SLEEVING, GRN.	
X	17	WL-100-7	WIRE, BUSS BAR 22GA.	
1	16	RC20GF473J	RESISTOR, FIXED	R82
1	15	CM.100-10	CAPACITOR, " 1500μfd	C98
1	14	CC-101-3	" " 220μfd	C100
1	13	SCBP0632BN4	SCREW, MACHINE	
2	12	SCFP0440BN4	" " "	
1	11	CT-104-4	CAPACITOR, VARIABLE	C99
2	10	NTH0632BN8	NUT, HEX	
3	9	LWJ06MRN	WASHER, LOCK	
2	8	SCFP0632BN6	SCREW, MACHINE	
1	7	A-908	TERM. BD. ASSY.	
1	6	MS-591	BRACKET, BFO	
1	5	CI-109-11	CORE	
1	4	SP-102	SPRING CLIP	
1	3	NT-102	NUT, HEX	
1	2	LWJ25LRC	WASHER, LOCK	
1	1	CF-117-1.0	COIL FORM	

REQ. ITEM	PART NO.	DESCRIPTION	SYMBOL
THE TECHNICAL MATERIEL CORP. MAMARONECK, NEW YORK			
COIL, RF, TUNED, BFO OSCILLATOR			
STOCK SIZE			
MATERIAL		WEIGHT PER PC.	
TYPE & TEMPER		CDD.6-23-55	
HEAT TREAT. SPEC.		G.T.O.	
FINISH & SPEC. NO.		A 1043	

1	GPR90RXDS			
1	GPR	LZZ	6-23-55	
REQ. PER UNIT	MODEL	PROJECT NO.	SYMBOL NO.	DATE
				USED ON