

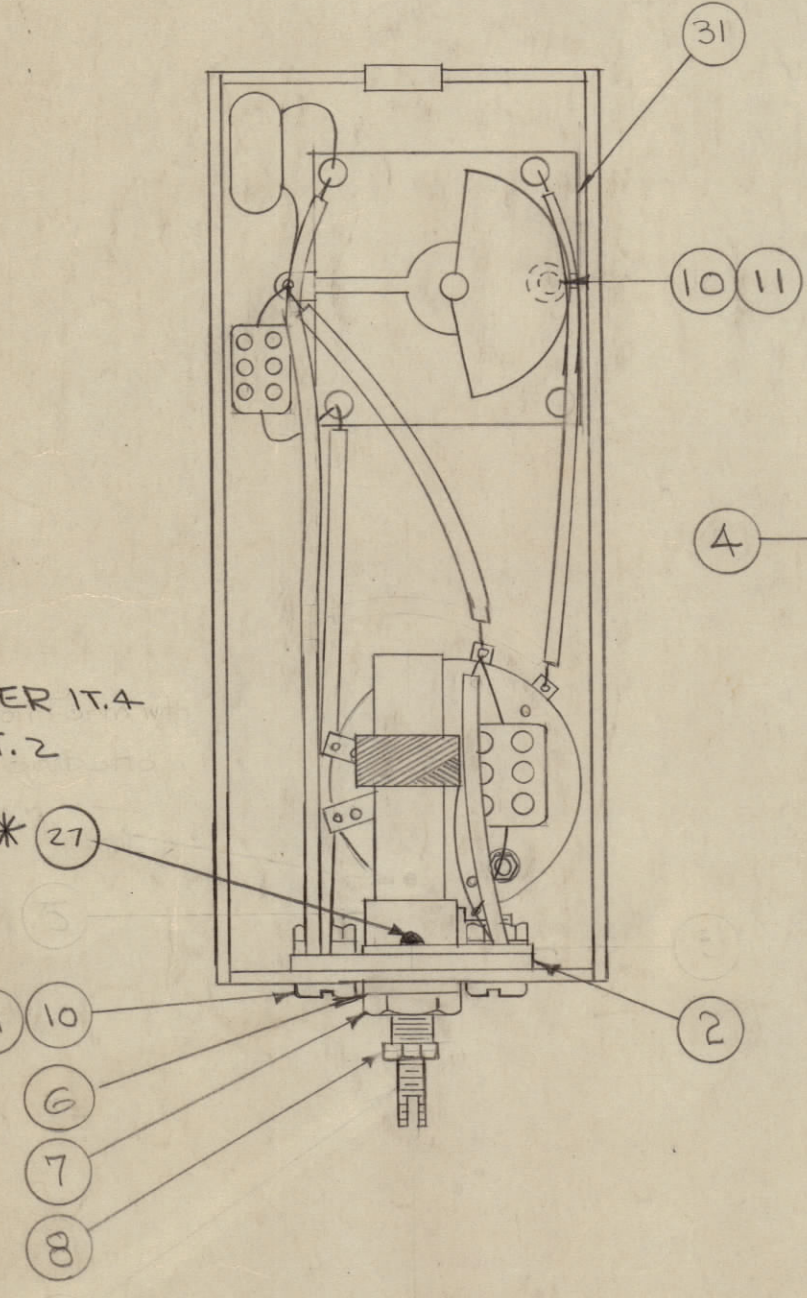
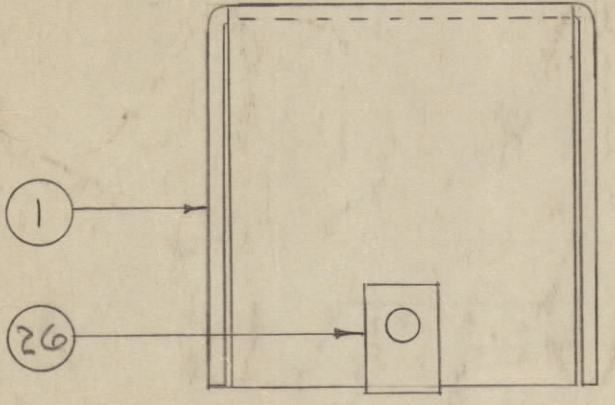
IF IT IS FOUND DESIRABLE TO CHANGE ANY TOLERANCE OR OTHER DETAIL SPECIFIED ON THIS DRAWING NOTIFY THE PURCHASER PROMPTLY.

MAXIMUM ALLOWABLE TOLERANCES HAVE BEEN DETERMINED AND DEVIATIONS WILL BE CAUSE FOR REJECTION. REMOVE ALL BURRS AND SHARP EDGES

NOTICE TO PERSONS RECEIVING THIS DRAWING

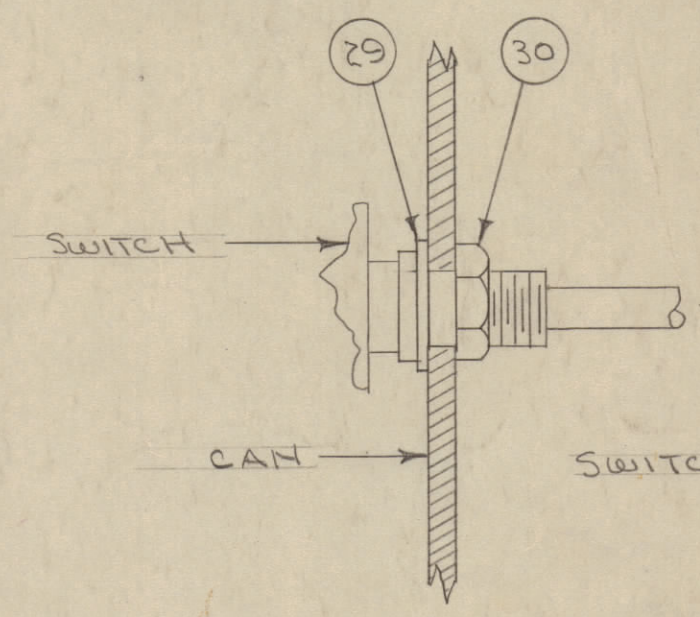
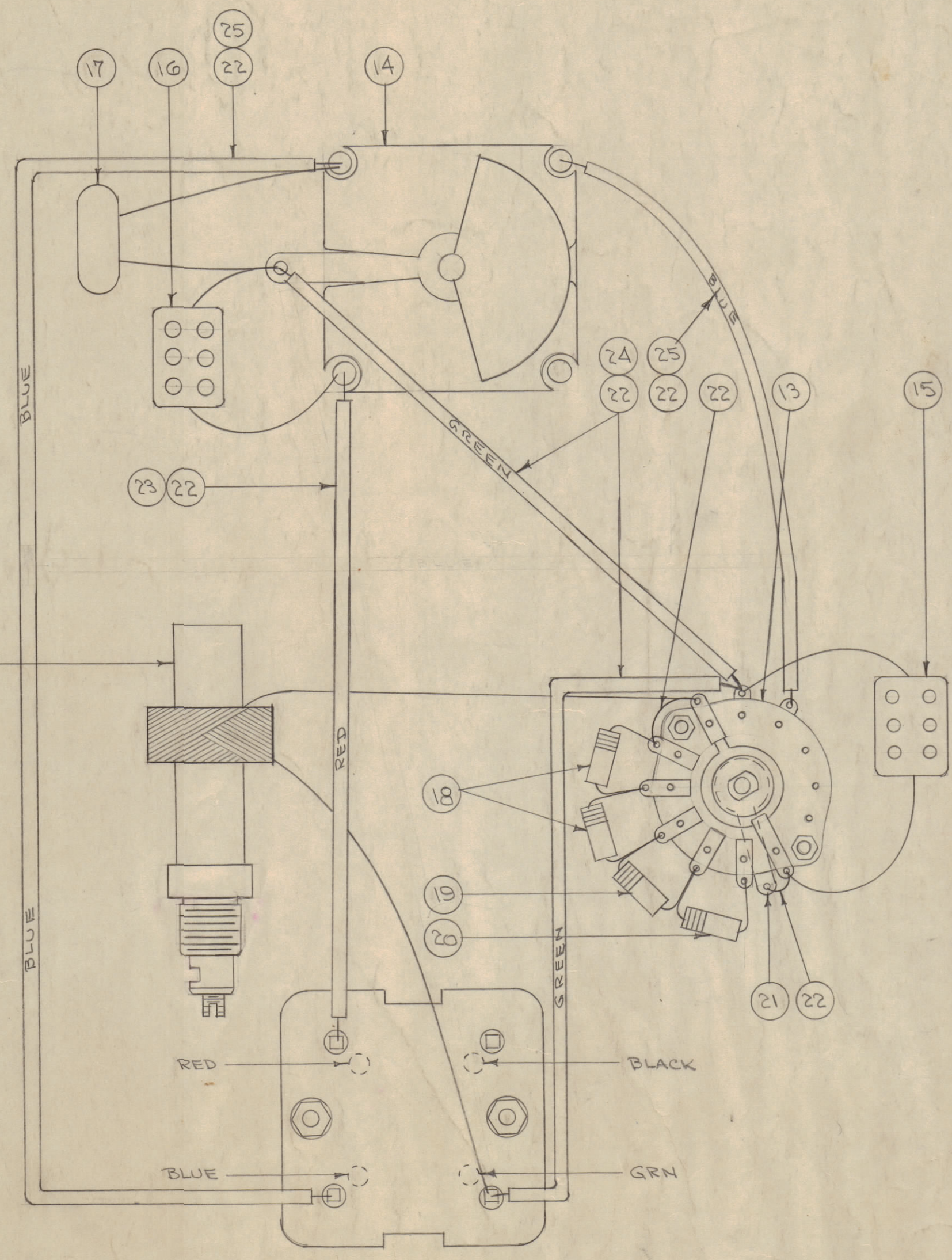
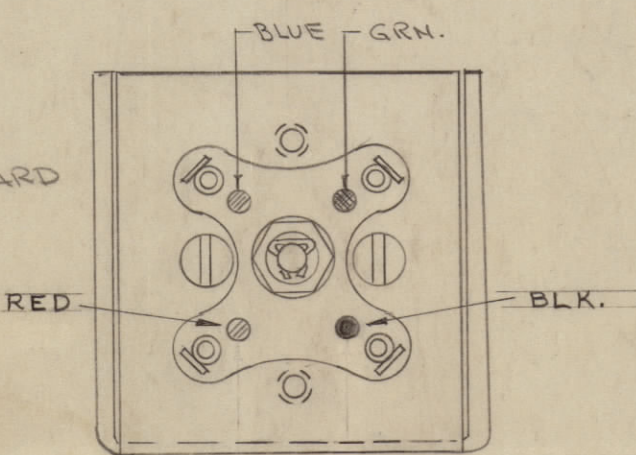
THE TECHNICAL MATERIEL CORPORATION claims proprietary right in the material disclosed hereon. This drawing is issued in confidence for engineering information only and may not be reproduced or used to manufacture anything shown hereon without permission from THE TECHNICAL MATERIEL CORPORATION to the user. This drawing is loaned for mutual assistance and is subject to recall at any time.

Property of:  
THE TECHNICAL MATERIEL CORPORATION  
MAMARONECK, NEW YORK



\*SOLDER IT.4 TO IT.2

COLOR CODE TERMINAL BOARD AS SHOWN.



1	31	IM-167	INSULATION, FISH PAPER	
1	30	NTH3T32BNIG	NUT, HEX	
1	29	LWI37LRN	WASHER, LOCK	
X	28	GL-103	DUCO CEMENT	
X	27	BS-100	SOLDER, SOFT	
1	26	NT-108-1	NUT, SPEED	
X	25	PX-104-6-022	INSULATION, SLEEVING	BLUE
X	24	PX-104-4-022	"	GRN.
X	23	PX-104-3-022	"	RED
X	22	WL-100-7	WIRE, BUSS BAR	?? GA.

A-1037

1	21	TE-111-2	LUG, SOLDER	
1	20	RC20GF101J	RESISTOR, FIXED	R35
1	19	RC20GF220J	"	R34
2	18	RC20GF100J	"	R33 R32
1	17	CR-102	CRYSTAL, 455 KC	Y1
1	16	CM15C050303YY	CAPACITOR, FIXED	C43
1	15	CM15F301G03	"	C44
1	14	CT-105-1	"	C42
1	13	SW-147	SWITCH, ROTARY	S2
			DELETED	
A	11	LWE06MRN	WASHER, LOCK	
4	10	SCBP0632BN5	SCREW, MACHINE	
			DELETED	
1	8	NTH0632BN8	NUT, HEX	
1	7	NT-102	NUT, HEX	
1	6	LWI25LRN	WASHER, LOCK	
			DELETED	
1	4	A-944	COIL	L20
			DELETED	
1	2	A-976	TERMINAL BOARD	
1	1	MS-587	CAN, XTAL FILTER	

WIRING DETAIL - ONLY TO SHOW CONNECTIONS.  
KEEP LEADS AS SHORT AS POSSIBLE.

NOTE 1 COMPLETED ASS'Y SHOULD BE ELECTRICALLY CHECKED IN XTAL FILTER TEST JIG. (SEE JG112)

J	IT 16 WAS CMCO50M IT IS WAS CM20D30IG	10/18/66	17039	WHD	JK	JK
H	ITEM 27 CALLOUT, *SOLDER NOTE ADDED	8/4/65	14643	E	JK	JK

TOLERANCES		SCALE:	
ALL OTHERS	DEC. DIM. ± FRAC. DIM. ± ANGULAR DIM. ±	DRILL PUNCH, COMMERCIAL STOCK SIZES AND MANUFACTURERS TOLERANCES ARE NOT INCLUDED.	

G	1	CLERICAL CHANGE	2/25/65	#	JK	JK	1	GPR-90-RXD	5-23-60
F	1	Item 5 & 9 Deleted From Build	6-1-64	4997	JK	JK	1	GPR90	6-21-55
E	1	Red Dot Added To Coil Form	5/17/61	4921	JK	JK	1		

REQ. ITEM	PART NO.	DESCRIPTION	SYMBOL
THE TECHNICAL MATERIEL CORP. MAMARONECK, NEW YORK			
STOCK SIZE			
ASSEMBLY, XTAL FILTER			
MATERIAL		WEIGHT PER PC.	
		GPR	L20
TYPE & TEMPER		CDD.6-21-55	###
HEAT TREAT. SPEC.		DRAWN	ELEC. DES. APP. MECH. DES. APP.
		CHECKED	FINAL APPROVAL
FINISH & SPEC. NO.		A-1037 J	