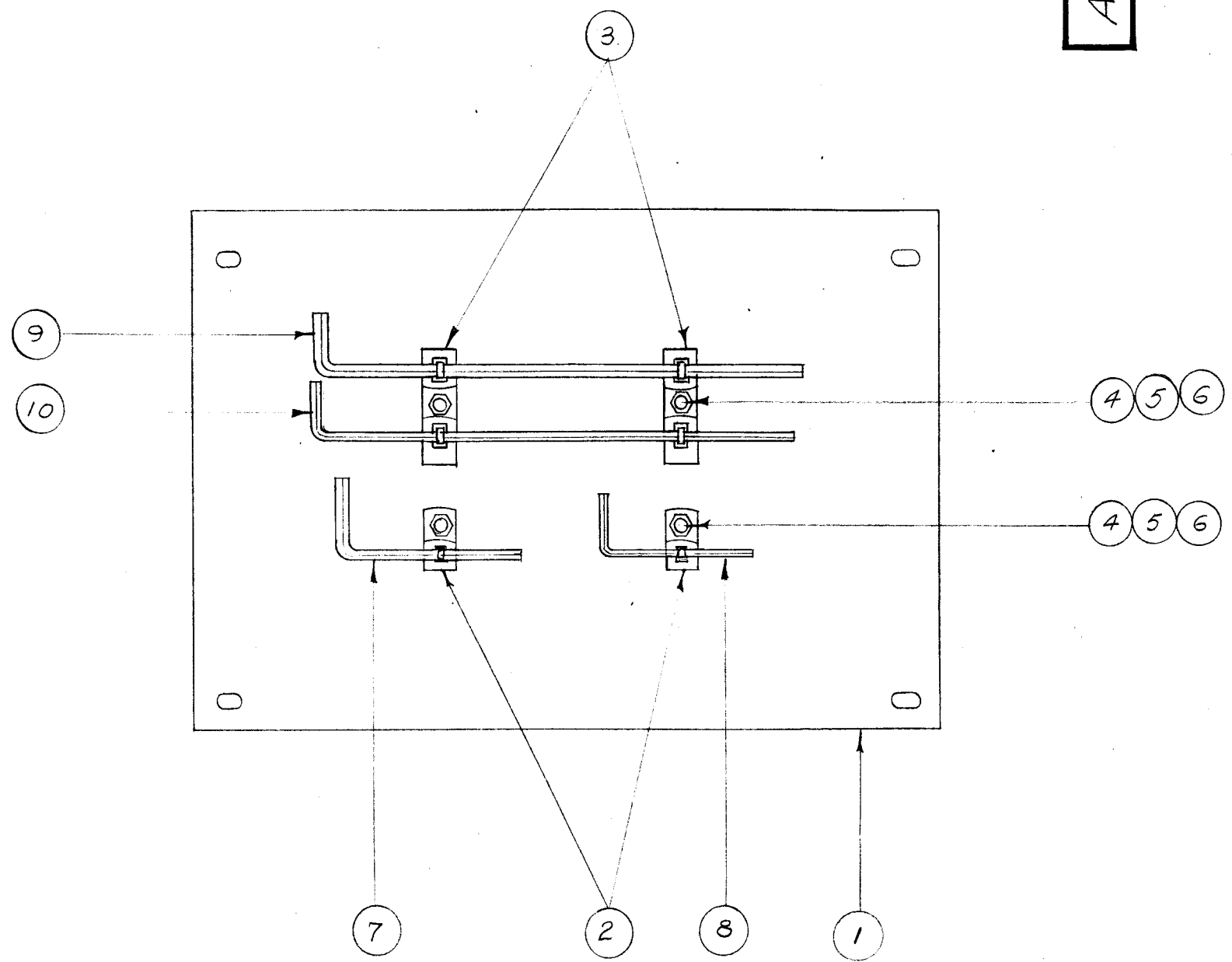


IF IT IS FOUND DESIRABLE TO CHANGE ANY TOLERANCE OR OTHER DETAIL SPECIFIED ON THIS DRAWING NOTIFY THE PURCHASER PROMPTLY.

MAXIMUM ALLOWABLE TOLERANCES HAVE BEEN DETERMINED AND DEVIATIONS WILL BE CAUSE FOR REJECTION. REMOVE ALL BURRS AND SHARP EDGES

A-1020 A



1	10	WR-100-19	WRENCH, HEX.
1	9	WR-100-18	WRENCH, HEX.
1	8	WR-100-2	WRENCH, HEX.
1	7	WR-100-5	WRENCH, HEX.
4	6	NTH0440BNG	NUT, HEX.
4	5	LWED4MRN	LOCKWASHER, EXT.
4	4	SCBP0440BN3	SCREW, MACHINE
2	3	CU-103-3	CLIP, SPRING
2	2	CU-103-1	CLIP, SPRING
1	1	MS-605	COVER TOP, OVEN SUPPORT

REQ. ITEM	PART NO.	DESCRIPTION	SYMBOL
THE TECHNICAL MATERIEL CORP.			
MAMARONECK. NEW YORK			
OVEN SUPPORT COVER, TOP			
ASS'Y			
STOCK SIZE		P.B. 5-30-55	
MATERIAL		DRAWN <i>J.A.D.</i>	
WEIGHT PER PC.		ELEC. DES. APP. <i>W.D.</i>	
TYPE & TEMPER		MECH. DES. APP. <i>W.D.</i>	
HEAT TREAT. SPEC.		CHECKED <i>J.A.D.</i>	
FINISH & SPEC. NO.		FINAL APPROVAL <i>W.D.</i>	

A	2	ITEM 4 WAS SLOTTED SCREW	6-22-62	6470	W.A.F.	<i>J.A.D.</i>	<i>W.D.</i>
	1	ALL HARDWARE FINISH WAS CADMIUM					
ISSUE	ITEM	CHANGED FROM	DATE	CN. NO.	DRAFTS	CHECKER	ENG. APP.

TOLERANCES		SCALE:	
ALL OTHERS	DEC. DIM. ± FRAC. DIM. ± ANGULAR DIM. ±	DRILL, PUNCH, COMMERCIAL STOCK SIZES AND MANUFACTURERS TOLERANCES ARE NOT INCLUDED.	

1	VOX-3,4,5,6			6-22-62
1	VOX-1,2			5-30-55
REQ. PER UNIT	MODEL	PROJECT NO.	ASS'Y. NO.	DATE
USED ON				

A-1020 A