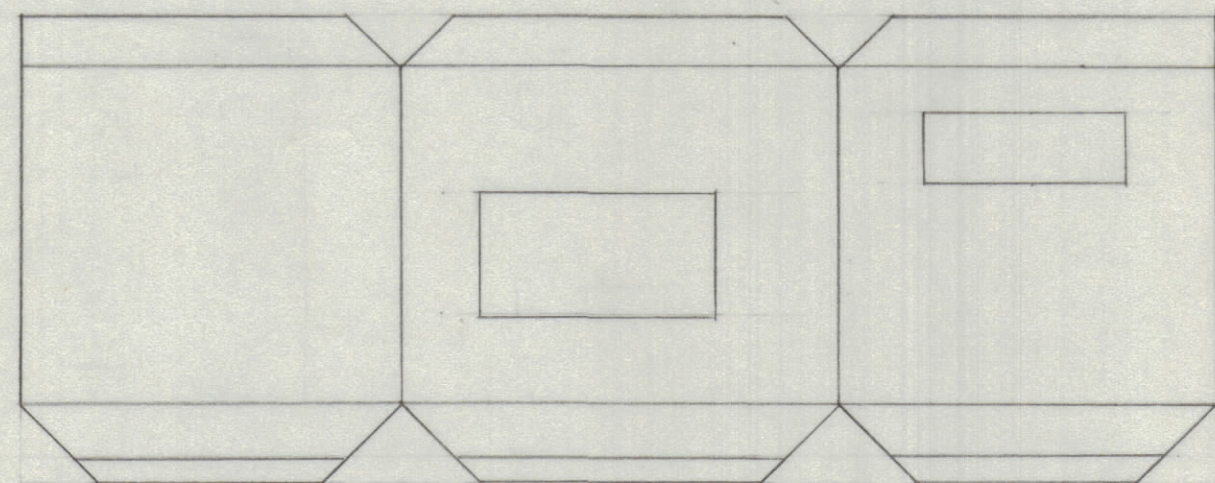
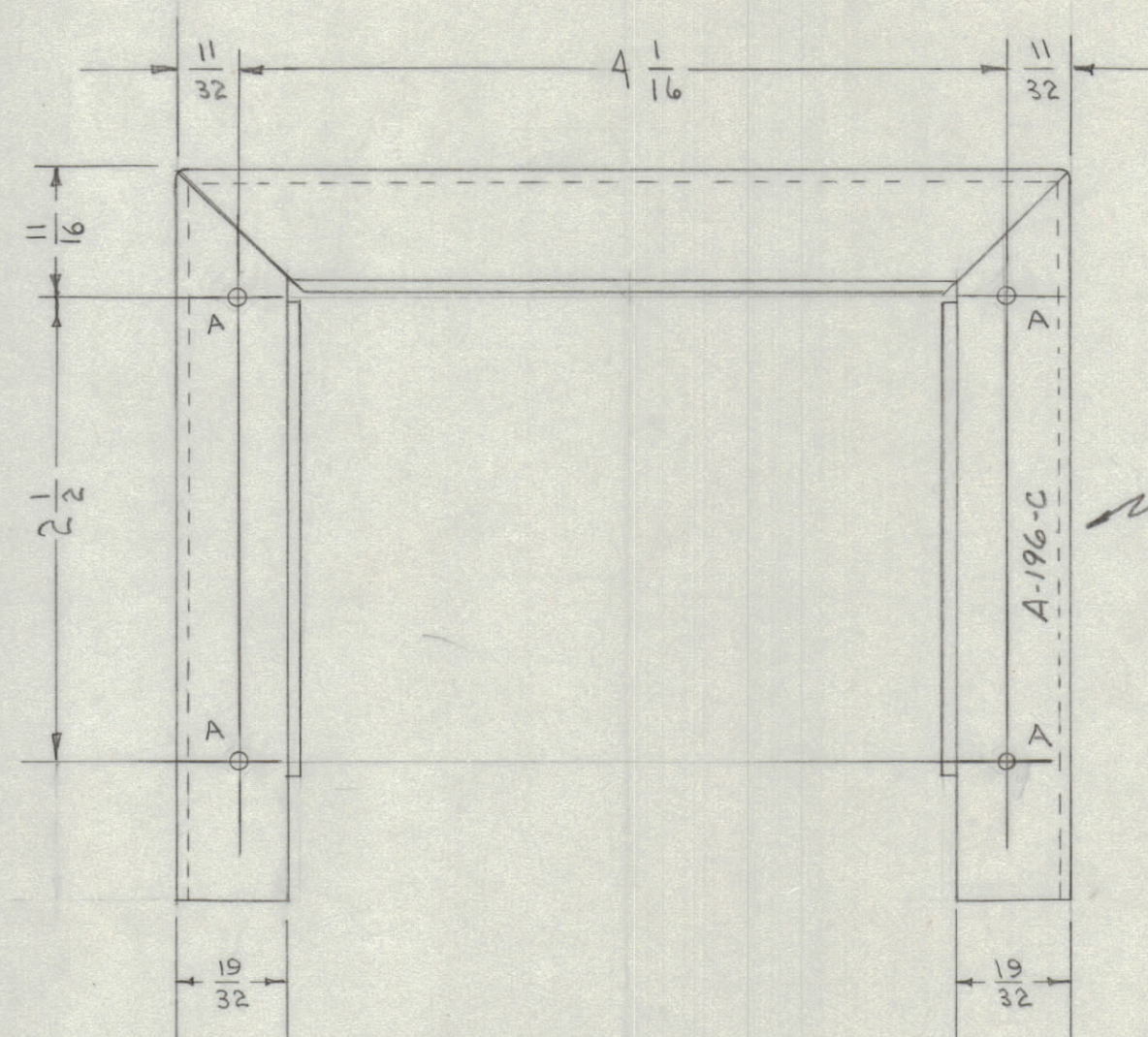


IF IT IS FOUND DESIRABLE TO CHANGE ANY TOLERANCE OR OTHER DETAIL SPECIFIED ON THIS DRAWING NOTIFY THE PURCHASER PROMPTLY.  
 MAXIMUM ALLOWABLE TOLERANCES HAVE BEEN DETERMINED AND DEVIATIONS WILL BE CAUSE FOR REJECTION. REMOVE ALL BURRS AND SHARP EDGES

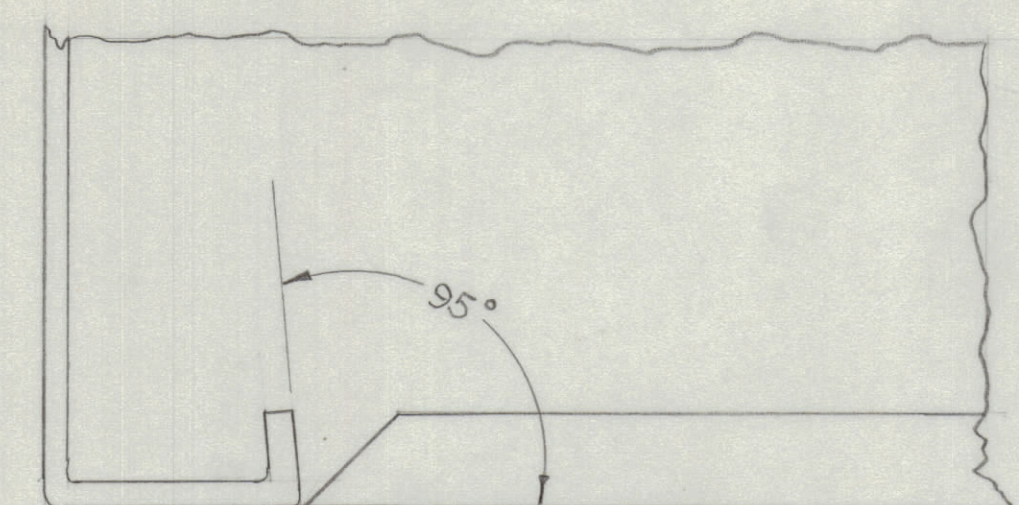
RELEASED



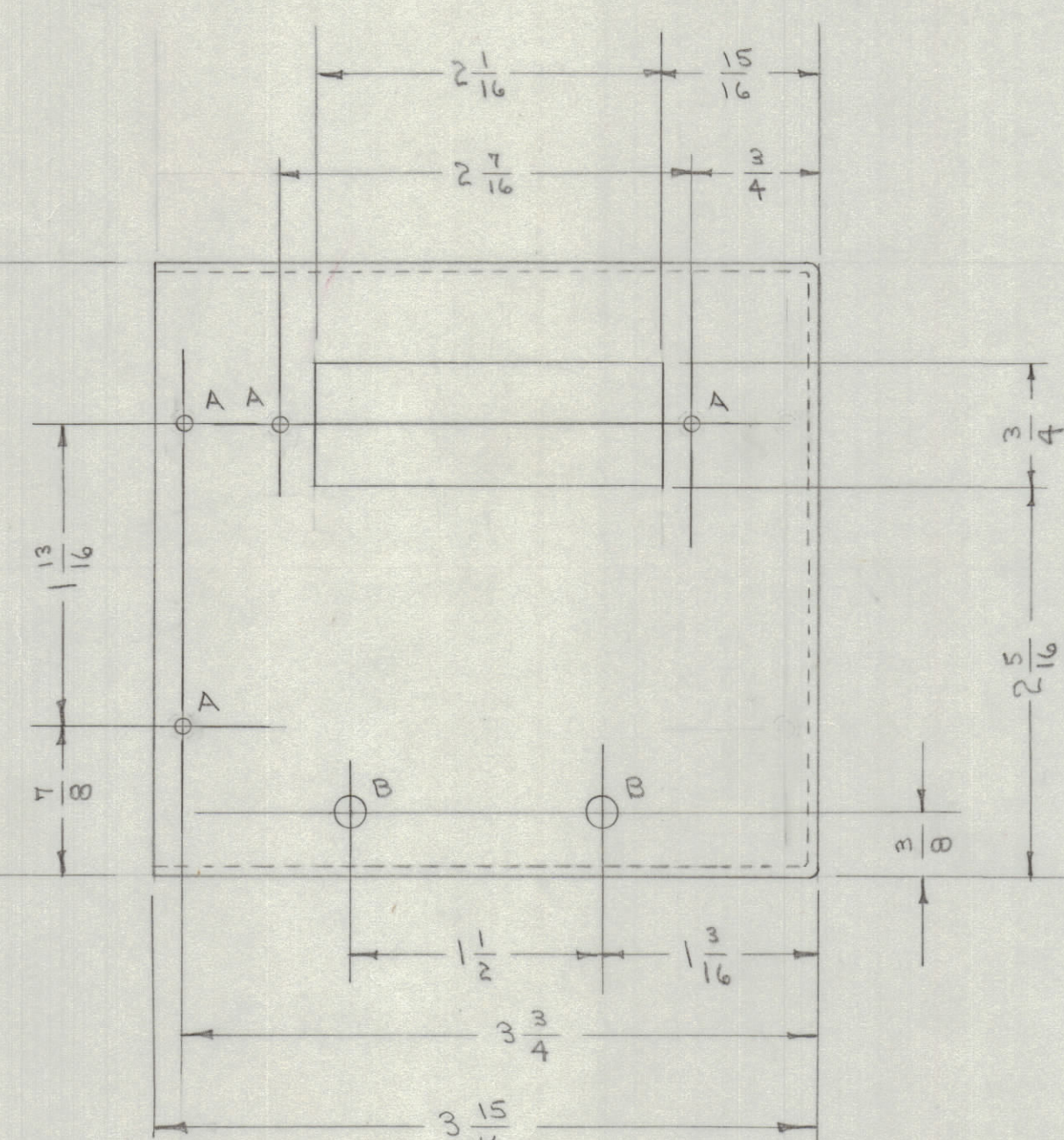
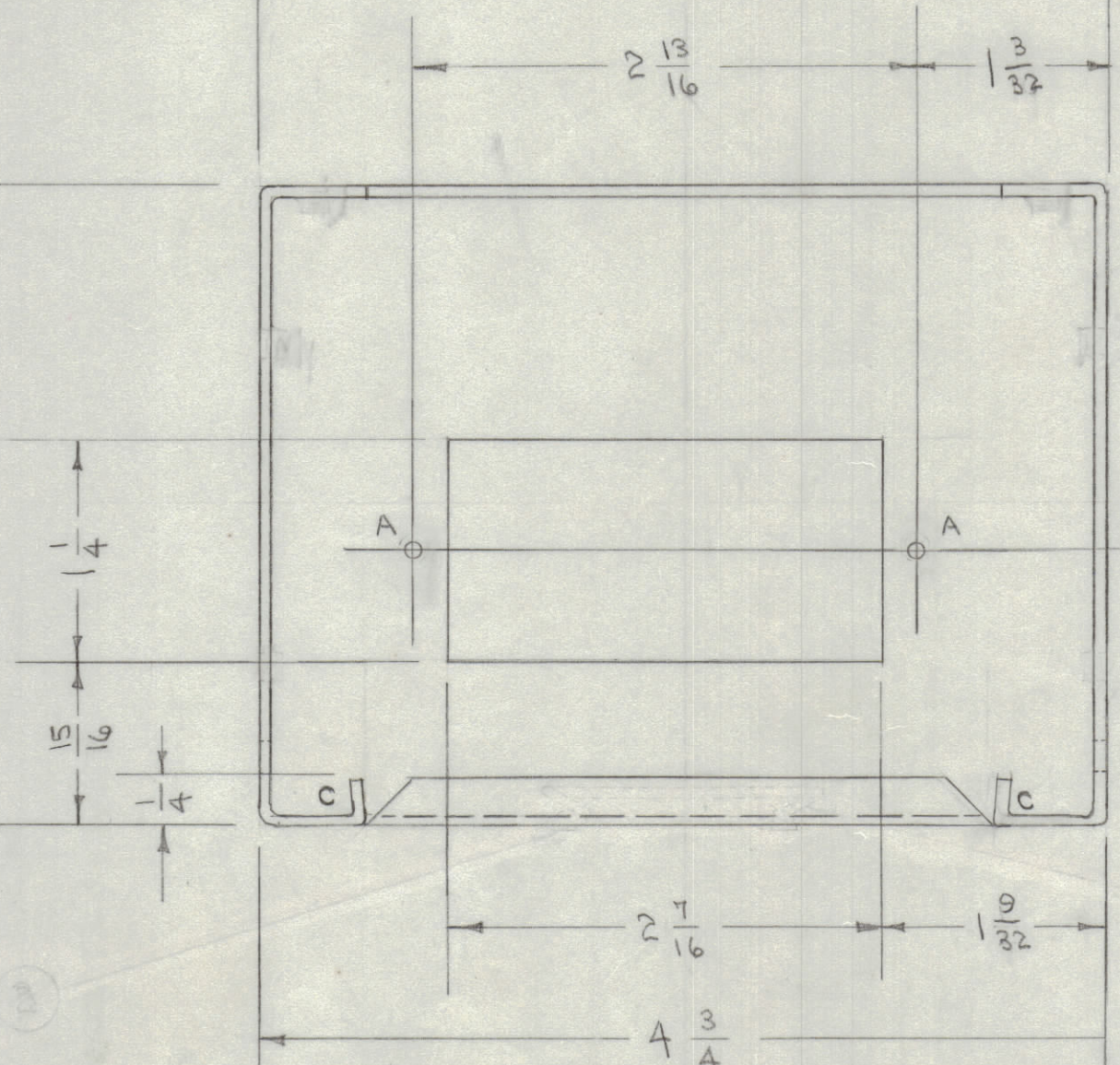
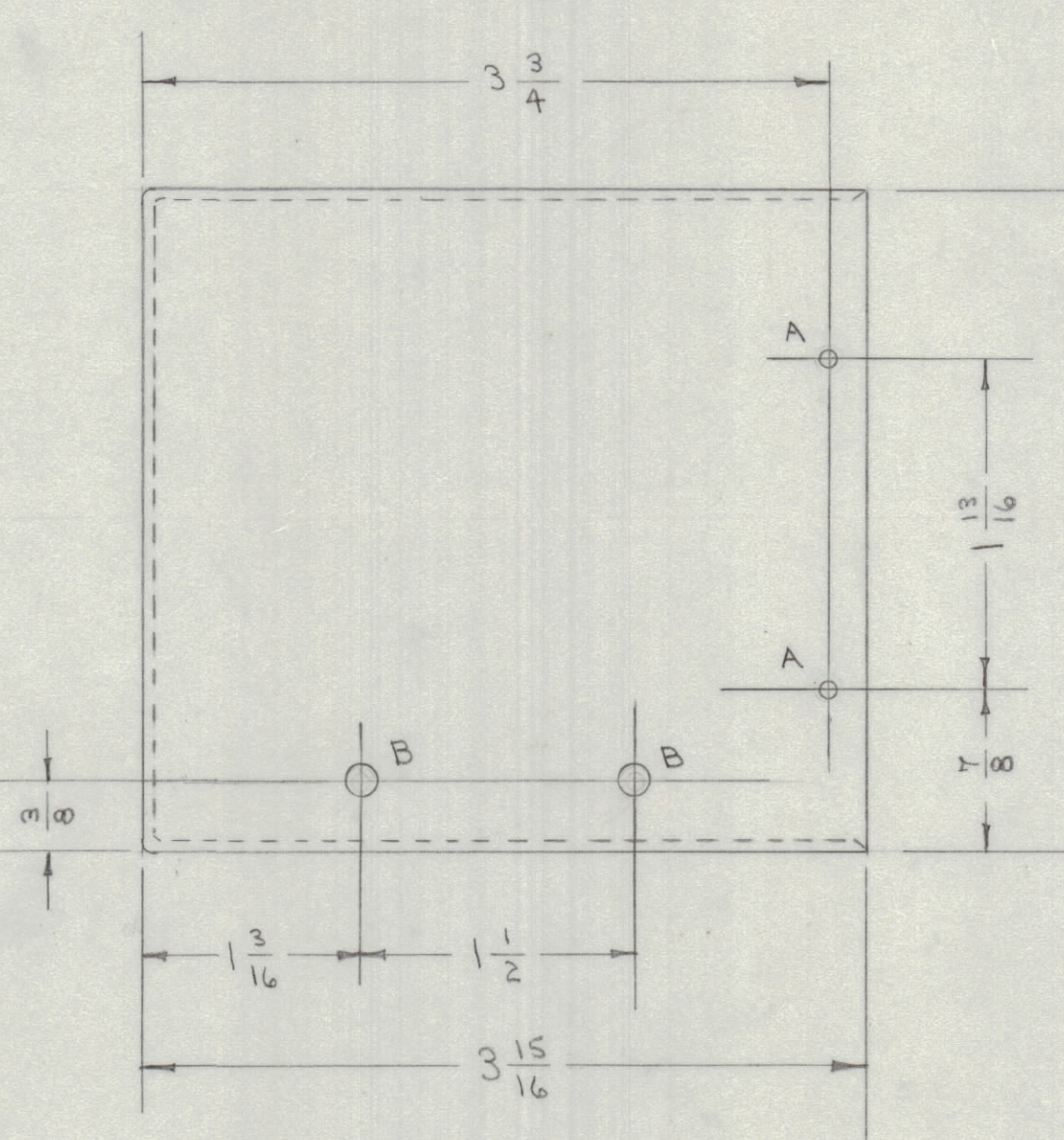
BLANK LAYOUT



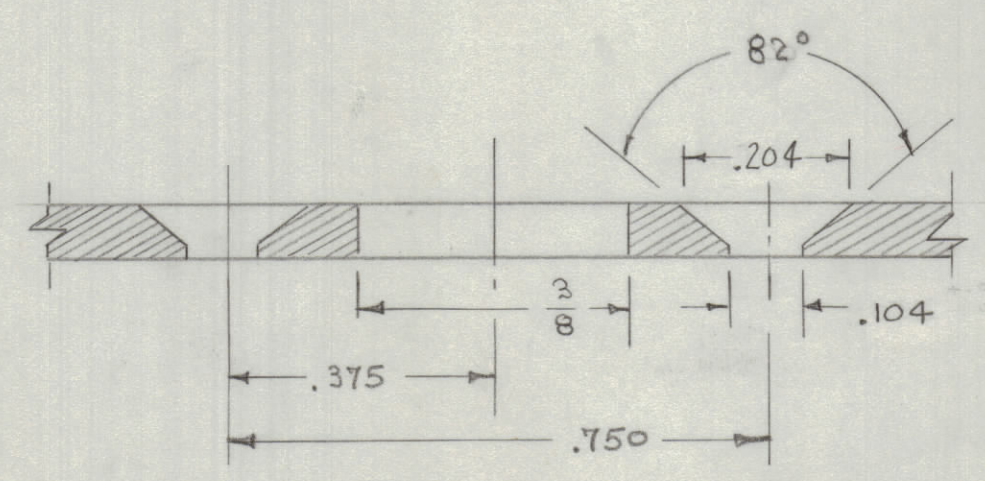
METAL STAMP TMC PART NO 1/8 HIGH, 90THC



ENLARGED DETAIL BEND



A- No. 45(.082) DRILL 12 HOLES REQ. METAL STAMP PART  
 B- 1/64(D.172) 4 HOLES REQUIRED  
 ALL BENDS 90° EXCEPT AS SHOWN  
 ALL INSIDE RADIUS 1/16



DETAIL AA REQUIRED FOR 3-48 FLAT HEAD SCREW

5	ITEM(S) NYTD-46 B&L, 2 REQ DELETED	10-26-74	2492					
4	ITEM(S) NYTD-46 B&L, 2 REQ DELETED	10-26-74	2492					
3	ITEM(S) NYTD-46 B&L, 2 REQ DELETED	10-26-74	2492					
2	ITEM(S) NYTD-46 B&L, 2 REQ DELETED	10-26-74	2492					
1	DETAIL AA WAS 3-48 FLAT HEAD SCREW	10-26-74	2492					
B	1 S10 CAUSTIC DIP	10-26-74	2492	A.B.				FMN
A	2 "A" HOLES WERE EXTRUDED	10-26-74	2492					
1	1 STOCK SIZE WALL .051	10-26-74	2492					

ALL OTHERS	DEC. DIM. ± .095 FRAC. DIM. ± 1/64 ANGULAR DIM. ± 1/4	DRILL, PUNCH, COMMERCIAL STOCK SIZES AND MANUFACTURERS TOLERANCES ARE NOT INCLUDED.
------------	---	---

NOTICE TO PERSONS RECEIVING THIS DRAWING

THE TECHNICAL MATERIEL CORPORATION claims proprietary right in the material disclosed herein. This drawing is issued in confidence for engineering information only and may not be reproduced or used to manufacture anything shown hereon without permission from THE TECHNICAL MATERIEL CORPORATION to the user. This drawing is loaned for mutual assistance and is subject to recall at any time.

Property of:  
 THE TECHNICAL MATERIEL CORPORATION  
 MAMARONECK, NEW YORK

LFA	109	A-147	9-20-52
MODEL	PROJECT NO.	ASSY. NO.	DATE

5	DELETED		
4	DELETED		
3	DELETED		
2	DELETED		
1	MS-140	SHELL, XTAL OVEN (DRAWING)	
REQ. ITEM	PART NO.	DESCRIPTION	SYMBOL
.064		THE TECHNICAL MATERIEL CORP. MAMARONECK, NEW YORK	
ALUMINUM		SHELL, XTAL OVEN SUB ASSEMBLY	
525-H32		CADD-15-52	
TYPE & TEMPER		DRAWN	
HEAT TREAT. SPEC.		ELEC. DES. APP.	
LFA 109 A-147 9-20-52		MECH. DES. APP.	
3404 IRIDITE		CHECKED	
FINISH & SPEC. NO.		FINAL APPROVAL	
BMS-032A		A-196 C	

A-196 C