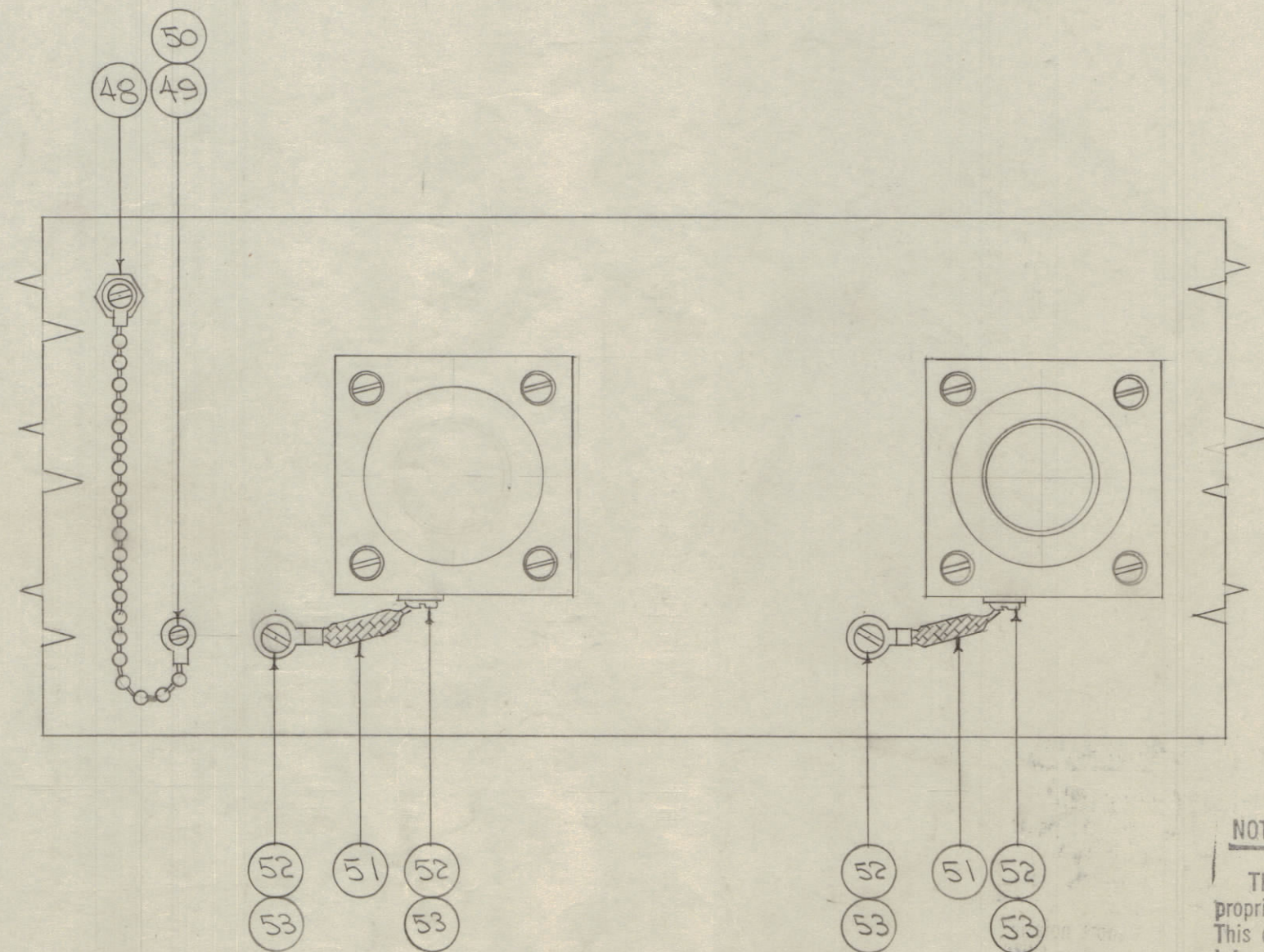
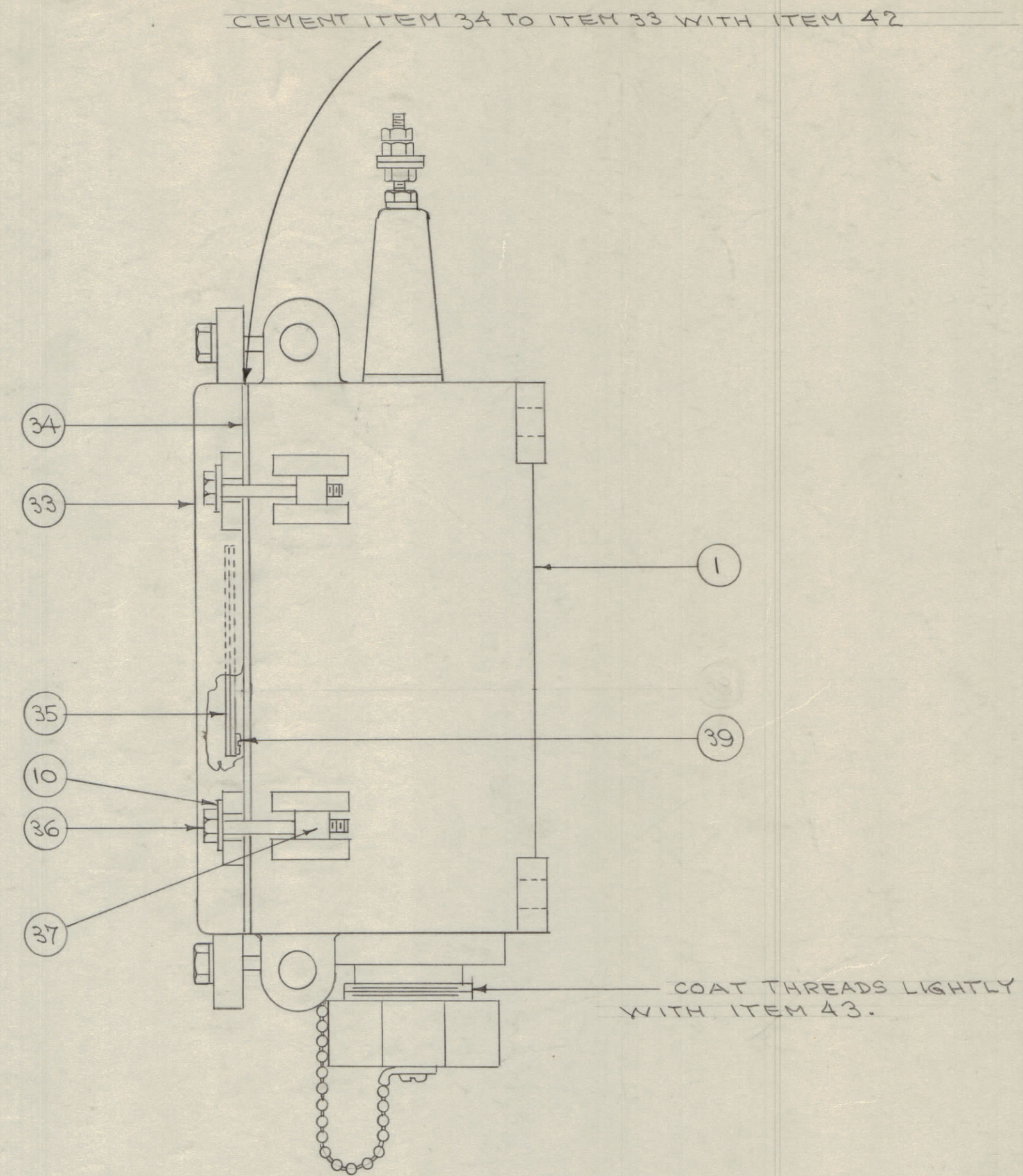
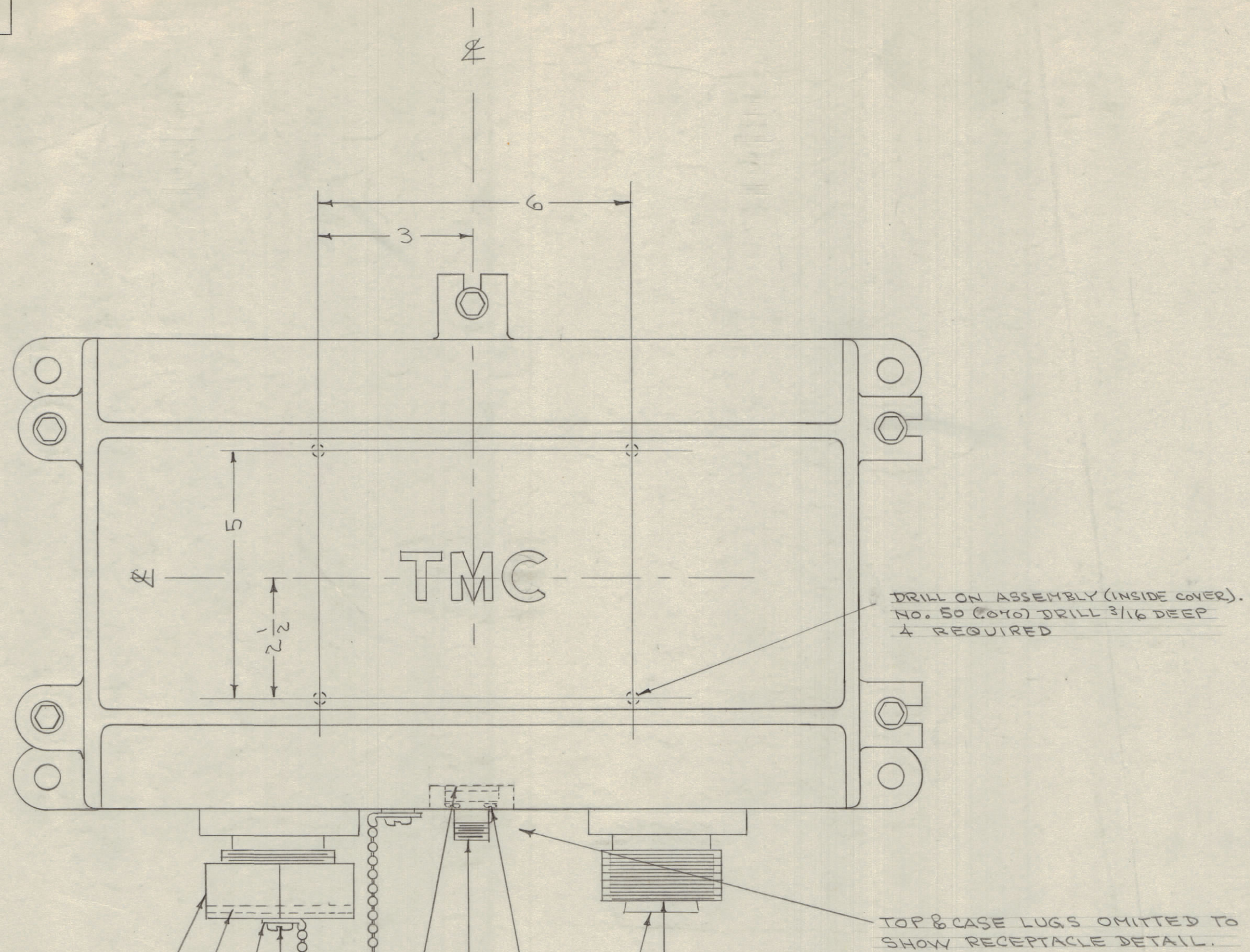
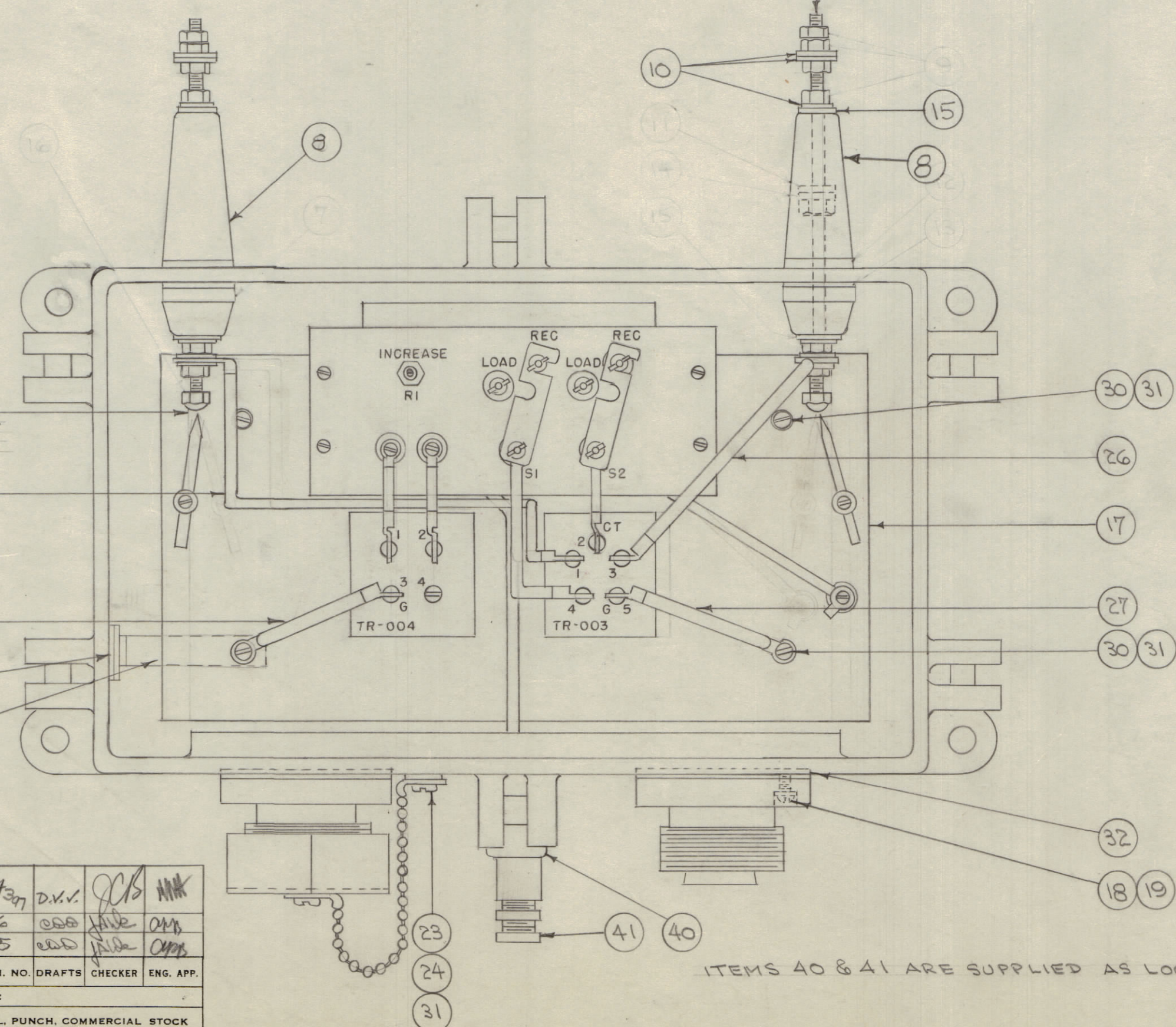


IF IT IS FOUND DESIRABLE TO CHANGE ANY TOLERANCE OR OTHER DETAIL SPECIFIED ON THIS DRAWING NOTIFY THE PURCHASER PROMPTLY.
 MAXIMUM ALLOWABLE TOLERANCES HAVE BEEN DETERMINED AND DEVIATIONS WILL BE CAUSE FOR REJECTION. REMOVE ALL BURRS AND SHARP EDGES



ADJUST SPARK GAP TO 1/32" SPACING.



ITEMS 40 & 41 ARE SUPPLIED AS LOOSE ITEMS.

A 53	SCBP10328NG	SCREW, MACHINE
A 52	LWE10MRN	WASHER, LOCK
2 51	CA409-68-2.00	GROUND STRAP ASSY.
1 50	SCBP632EN3	SCREW, MACHINE
1 49	LWE06MRN	WASHER, LOCK
1 48	A-1291	DRAIN PLUG ASSY.
1 47	RY-11A-77716	STOPPER
1 46	MS-933	HOLDER, DESSICANT
2 45	AD-101-1/3	DESSICANT
X 44	BS-100	SOLDER, SOFT
X 43	LU-102	COMPOUND, ANTI-SIEZE
X 42	GL-101-2	CEMENT, PLOBOND
1 41	MX-56A/U	CLAMP, ARMOR
1 40	UG-21*/U	PLUG
A 39	SFBOR36514	SCREW, THD. CUTTING
38		DELETED
6 37	PM-100	PIN, COVER BOLT
6 36	SCM25205528	BOLT, HEX HEAD
1 35	LD-119	SCHEMATIC DIAGRAM
1 34	GA-107	GASKET, COVER
1 33	PM-11A	COVER

2 32	GA-102	GASKET
5 31	SCBP08328NG	SCREW, MACHINE
5 30	LWE08MRN	WASHER, LOCK
1 29	A-875	JUMPER #8 ASSY.
1 28	A-872	" #5 "
1 27	A-873	" #6 "
1 26	A-874	" #7 "
8" 25	CJ-100-3	BEAD CHAIN
2 24	MS-105-4-0	COUPLING, CHAIN
2 23	SCBP0832554	SCREW, MACHINE
1 22	GA-105	GASKET
1 21	PM-108	CAP, COUPLING
2 20	PM-107	COUPLING, FLANGE
8 19	SCRP25205512	SCREW, MACHINE
8 18	LWS25MSS	WASHER, LOCK SPLIT
1 17	A-190	TRANS. & T. B. SUB ASSY.
16		DELETED
15		DELETED
14		DELETED
13		DELETED
12		DELETED
11		DELETED
10	FW 25HSS	WASHER, FLAT
9		DELETED
2 8	A-102	INSULATOR ASSY.
7		DELETED
6		DELETED
4 5	LWE04MRN	WASHER, LOCK
4 4	SCBP040595	SCREW, MACHINE
1 3	UG-58*/U	RECEPTACLE
1 2	GA 149-4	GASKET
1 1	PM-110	CASE

NOTICE TO PERSONS RECEIVING THIS DRAWING

THE TECHNICAL MATERIEL CORPORATION claims proprietary right in the material disclosed hereon. This drawing is issued in confidence for engineering information only and may not be reproduced or used to manufacture anything shown herein without permission from THE TECHNICAL MATERIEL CORPORATION to the user. This drawing is loaned for mutual assistance and is subject to recall at any time.

Property of:
 THE TECHNICAL MATERIEL CORPORATION
 MAMARONECK, NEW YORK

G	B/M CHART COMPLETELY REVISED. 508 ADDED.	11/4/54	D.V.V.	MMK		
F	ITEMS 45 THROUGH 53 ADDED	11/10/54	MMK	MMK		
E	COMPLETE REVISION	11/10/54	MMK	MMK		
ISSUE	ITEM	CHANGED FROM	DATE	CN. NO. DRAFTS	CHECKER	ENG. APP.
TOLERANCES						
SCALE:						
DRILL, PUNCH, COMMERCIAL STOCK SIZES AND MANUFACTURERS TOLERANCES ARE NOT INCLUDED.						
ALL OTHERS: DEC. DIM. ±; FRAC. DIM. ±; ANGULAR DIM. ±						

1	BAC-2	157		11-5-54
REQ	MODEL	PROJECT NO.	ASSY. NO.	DATE
PER				
UNIT				
USED ON				

THE TECHNICAL MATERIEL CORP. MAMARONECK, NEW YORK			
FINAL ASSY BAC-2			
STOCK SIZE			
MATERIAL	WEIGHT PER FC		
TYPE & TEMPER	CDD. 11/5/54		
HEAT TREAT. SPEC.	CHECKED	ELEC. DES. APP.	MECH. DES. APP.
FINAL APPROVAL			
A-188 G			